

9-1-1995

September 1 1995

Friday Bulletin

Follow this and additional works at: <http://scholarworks.lib.csusb.edu/fridaybulletin>

Recommended Citation

Friday Bulletin, "September 1 1995" (1995). *Friday Bulletin*. Paper 1040.
<http://scholarworks.lib.csusb.edu/fridaybulletin/1040>

This Article is brought to you for free and open access by the CSUSB Archives at CSUSB ScholarWorks. It has been accepted for inclusion in Friday Bulletin by an authorized administrator of CSUSB ScholarWorks. For more information, please contact scholarworks@csusb.edu.

THE FRIDAY BULLETIN

SEPTEMBER 1, 1995

SCHOOL OF ED GAINS FULL ACCREDITATION

At a mid-July meeting in Sacramento, the California Commission on Teacher Credentialing approved accreditation of the 17 credential programs in the university's School of Education.

Granted a full six-year accreditation, Cal State underwent a three-and-one-half day review by 14 commission team members. The team interviewed current and former students, faculty and employers.

The process included detailed responses to all CTC Common Standards and to each set of individual program standards. The programs include specific credentials in administrative services,

designated subjects, elementary education, secondary education, pupil personnel, reading/language arts and special education.

"We are extremely pleased (about) and proud of our full accreditation without stipulations," says Phyllis Fernlund, acting dean for the School of Education. "Our dean for the School of Education is in maintaining quality programs for our future educational leaders."

Cal State was the first public institution to volunteer to go through the pilot accreditation model, which was being field tested. The next accreditation comes in the year 2000.

PROGRAM RENAMED

The California Transition Program has been renamed the University Center for Developmental Disabilities.

Established some four years ago, the center is currently directed by Stanley Swartz, professor of Advanced Studies. The program has been expanded to serve 55 children with autism or other developmental disabilities and their families, including parent support groups.

The center is funded through the Inland Regional Center, a local representative of the State Department of Developmental Disabilities.

NOON RECITAL SERIES STARTS THIS FALL

A Thursday Noon Recital Series, featuring Cal State music faculty, students and area artists, begins this fall.

In the weeks following the Oct. 5 opening recital with CSUSB music faculty, the university will present the annual children's concert featuring the CSUSB Symphonic Band and Concert Choir and a performance by the American Boy Choir of Princeton. Repertoire classes—coached by faculty in a master class format—for student pianists and vocalists will be held Oct. 19 and Nov. 9.

November 30 is the final performance of the fall series, and the winter series begins Jan. 18, 1996.

STRATEGIC PLANNING STEERING COUNCIL LAUNCHED

Aiming to develop a new approach to strategic planning, the university has created a steering council that will lead the campus in this effort, President Evans announced in late July.

"There seems to be general agreement for such a move," he remarks. "The regional accrediting agency has strongly urged that we move in this direction."

Following the advice of a consultant, Joseph Subbiondo of The School of The Art Institute of Chicago who visited Cal State last winter, the campus has formed a council that will serve as a standing advisory panel to the president with regard to planning and budgeting issues, notes Joseph Lovett (Health Sciences), who is

assistant to the vice president for Academic Affairs for strategic planning.

Members of the council are: William Aguilar (Information Resources & Technology), Billie Blair (Elementary/Bilingual Education), George Bradshaw (Outreach Services), Louis Fernandez (Academic Affairs), Christy Heame (ASI), Linvol Henry (Accounting & Finance), Craig Monroe (Communication Studies), Teresa Morris (Faculty Senate), Johnnie Page (Payroll), Cynthia Pringle (Public Affairs), Frank Rincon (Student Services) and William Takehara (Finance Operations). Fernandez chairs the council.

"We probably share a lot of commonality in what we would like the university to

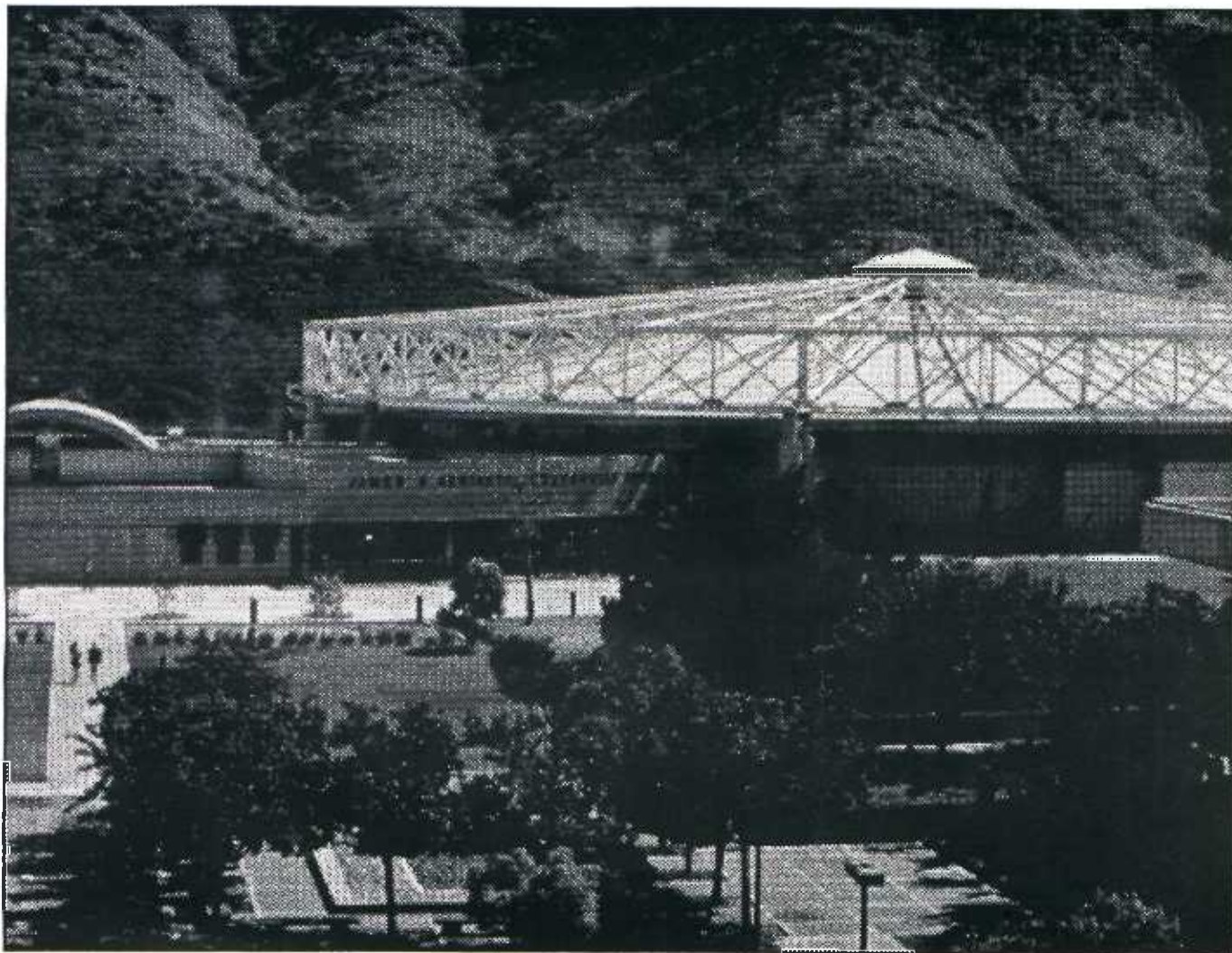
be in the 21st century," Lovett says. "We may be right or wrong, but we also have to be capable to react to change and forces we see operating."

Lovett says that Cal State does not have a "planning readiness problem," rather it has a "planning fragmentation problem," as noted in the consultant's report, which assessed planning readiness, issues and processes. The report also recommended that the university connect its "many and disparate planning efforts into an integrated planning process."

Although there is much "skepticism regarding the efficacy of planning" at the university, Lovett says the process that the council develops must be integrated into

the university's governance process, be driven by its academic mission and influence the allocation of university resources.

The council met for the first time on August 24 and will meet again August 31. It will develop a regular schedule of meetings that will be open to the campus community, Lovett states. Several subcommittees are expected to be formed to assess issues relating to technology, academic programs, enrollment management, facilities, diversity, student life and university relations, among other topics. The council expects to complete its work by April 1, Lovett says.



CEREMONIES, EVENTS ANOINT NEW COMPLEX

The Health and Physical Education Complex and Coussoulis Arena will stage its official opening during a Sept. 26 ribbon-cutting ceremony. Faculty, staff and students are invited to stop by for a brief noon ceremony and light refreshments.

Several events have been planned throughout the year to celebrate the grand opening.

On Sept. 30 the university will host a conference for the Inland Empire Unit of the California Association of Health, Physical Education, Recreation and Dance and an "all nighter" sponsored by recreational sports on Oct. 6.

A Coyote Basketball Extravaganza is slated for Nov. 28.

photo by Dan Morley

A NOTE FROM HUMAN RESOURCES

ASSISTIVE DEVICES

The Assistive Device Program Phase II deadline is Oct. 11, 1995. The program is designed to provide limited funding to defray costs for making reasonable equipment or device accommodations to the physical or mental limitations of otherwise qualified employees with disabilities. A proposal form may be obtained from and returned to the Human Resources Department by October 11, 1995. If you have any questions, please call Debby McAllister or Twillea Carthen at ext. 5138.

DISCOUNT TICKETS

Raging Waters tickets are still available in the Human Resources Department. Adult tickets, good on any day except weekends through the month of August, are \$12.99. Or pay \$14.99 for tickets good on any day in August, including weekends. Children's tickets are \$9.99 for ages 4-10. Children 3 and under are free. Raging Waters is open daily through Sept. 17.

Los Angeles County Fair tickets are available Sept. 8-Oct. 1. Adult tickets are \$5 and children (6-12) are \$3. A Fair Fun Pack is \$10. Monday through Thursday, Fair Fun Packs can be turned in for unlimited use of the rides as well as the weekend of Sept. 8-10, Friday-Sunday. Fair Fun Packs can be exchanged for 30 ride coupons, five buy-one-get-one free game coupons and a sky ride special offer.

Harvest Festival tickets will soon be available. Adult tickets are \$4.50 and children's tickets are \$2. Tickets will be good at any location.

All tickets must be paid for with cash.



THE BULLETIN BOARD



A MOVING EXPERIENCE

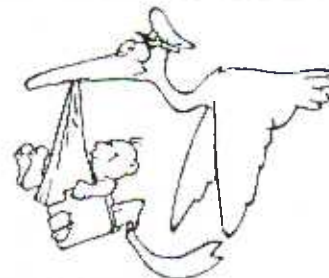
Now down in Jack Brown Hall you'll find the Psychology Department making the mental adjustment to its new locale. The department office is JB-209. The department chair's office is JB-105A. The phone number is the same as always. Ext. 5570.

MENTOR HUNT

The Undergraduate Studies Department will start its All-for-One Mentor program this fall. A program for first-year freshmen, it will help them make a successful transition to university life. Students will be matched with faculty, administrators or staff, who will work one-on-one with them during the regular school year. For an application call undergraduate studies at Ext. 5044, or drop by UH-380.

IN MEMORIAM

The campus community extends sympathies to Michael Ross (Academic Computing and Media) whose son, Joshua, passed away Aug. 19. A memorial service was held Aug. 23 at Holy Rosary Cathedral.



BIRTH ANNOUNCEMENT

Francesca Cover (SAIL) and her husband, Richard, received on their twenty-ninth anniversary the gift of their first grandchild. Riley Thomas was born at Redlands Community Hospital on Aug. 14. He weighed 8 pounds, 12 ounces and measured 22 1/2 inches.

PERSONNEL

Full-time, temporary

Carol A. Lloyd
Senior Secretary
Library - Administration
Ext. 5102, PL-126

Half-time, temporary

Dana L. Fisher
Clerical Assistant III
International Student Services
Ext. 5193, UH-183

THE FRIDAY BULLETIN

is a biweekly newsletter published for administrators, faculty and staff of California State University, San Bernardino.

Next issue: **Friday, Sept. 22.** Items for publication should be submitted in writing by 5 p.m., **Tuesday, Sept. 12** to:

Sam Romero, Editor
Public Affairs, AD-121
CSUSB
5500 University Parkway
San Bernardino, CA
92407-2397
(909) 880-5007
Fax (909) 880-7043
Vol. 30, No. 17

CAMPUS EMERGENCY BUILDING EVACUATION

(C) Coordinator (F) Floor Warden (AC) Alternate Coordinator

Administration:

Joan Caccavale F Ad-121 5007
Karen MacIntyre F Ad-101 5024
Barbara Holtzman F Ad-165 5059
J.C. Robinson C Ad-101 5024/3029
Lillian E. Haskell F Ad-101 5024/3321
Jonova Knickerbocker F Ad-104G 5005/3027

Biology:

Basement: James Gooch F Bi-008 5148
Dwight Gallo F Bi-026a 5306
First: Klaus Brasch C Bi-217 5300/3300
Jim Mehegan AC Bi-109 5337
Second: Carol Smith F Bi-217 5305
Michael Mahoney F Bi-204 5405
Third: Ken Poarch F Bi-325 5571
Gratice Brown F Bi-320 5571

Bookstore:

Carol Dunlap C Bk-111 5970
Betty Bartlett F Bk-112 5968
Kathy Nelson F Bk-110 5966
Sylvia Flores AC Bk-110 5966

University Center for Developmental Disabilities:

Stanley Swartz C UH401.20 5601
Donita Remington F UH401.07 5652

Children's Center:

Kimberly Harris C CC-104 5928
On-duty Teacher F CC-104 5928

Commons:

Keith Ernst C CO-210 5916
Hector Calderon F CO-209 5916
On-duty Com. Staff F CO-210 5916
Linda Carter AC CO-210 5916

Creative Arts:

First: Margaret Perry C CA-118 5876
Judy Dymond AC CA-118 5876
Harlan Jeglin F CA-142 5878
Trudy Storm F CA-134a 5882
Second: Ed Bostley C CA-222 5863
Dan Robinson F CA-121 5867
Luis Gonzalez F CA-219 5866

Faculty Office Building:

Cynthia Black-Turner C OF-175 5500/3500
David L. Villalobos F OF-175 5500
Teresa E. Constant C OF-182 5600/3603
Laura Duarte F OF-182 5600/3601

Foundation:

Jeannie Colunga F SH-134 5975
Joyce Henson F SH-134 5978

Health Center:

John Hatton C HC-112 5040
Debbie Garcia F HC-154 5241
Cecilia Mc Carron F HC-150 5241

Heating & Air:

Leroy Wilke C HA-010 5169

On-duty staff

F HA-010 5170
Housing:
Pamela Merchant C BD-112 5246
Mary Jo Dulaney F Housing 5247
Kathy Marcelino F Housing 5246
Resident Assistants/On-duty CSO 5965
Maury Huerter F Repairs 5944

Jack Brown Hall:

First: Ian Jacobs C JB-259 5791
Charles Hoffman F JB-
On-duty Monitors F JB-122.123 2844/5725
Second: Jack McDonnell C JB-278 b 5701
Lynda O'Brien F JB-278 e 3701
Third: Owen Murphy C JB-345 5408
Robert Stein F JB-368 a 3383
Fourth: Jill Lewis F JB-461 5731
Fifth: Charles Hoffman C JB-
Diane Catalano F JB-460 5723

Library:

Basement: Michael Burgess F PL 066 5103
First: Les Kong F PL 123 5111
Second: William Aguilar C PL 2006 d 5009
Johnnie Ralph AC PL 2006 c 5102
Third: Lee Wahrer-Stanton F PL 303 5093
Annie Hopkins F PL 321 5095
Fourth: Buckley Barrett F PL 4005 b 5104
Fifth: Dave Bourquin F PL 5005 r 5105
Lois Hill F PL 5005 5115
John Tibbals F PL 5005 5103

Library Wedge:

Basement: Susan Cooper C PL 003 5619/3619
Carmen Carswell F PL 003 5060
Elke Noetzel F PL 003 5619/3172
Rich McGee F PL-022 7275
First: Chani Beeman F PL 018 5075/3069
Dan Moseley F PL 2104 b 7262
Second: Terri Cortez F PL 2105 5133/3335
Dan Ashley F PL 2104 b 7262

Physical Plant:

Physical Plant Staff PP-113 5166
Public Safety PP-120 5165
Parking Services PP-120 b 5912
Envi. Health & Safety PP-114 5179

Physical Education/Sports Arena:

Nancy Simpson C HP-108 5011/3015
Terry Rizzo AC HP-208 5355
Joseph Liscano F Equip/room 3352
Judy Powell F HP-120 C 5349

Physical Science:

Basement: Frank Lootens C PS-028 5301
John Sanders F PS-022 5335
Bill Martin F PS-019 5404
First: Leo Connolly F PS-117 5400
Jan Moorefield F PS-119 5397

Second: John Craig F PS-319 5318
Sandra Hall F PS-319 5318
Third: Jan Mack F PS 331 5321
Ken Makino F PS 331 5321

Sierra Hall:

Bill Shum C SH-129 a 5136
Hamid Azhand AC SH-127 c 5137
Beverly Smith F SH-124 3918
Kathy Mc Carrell F SH-102 5157
Debbie Allen F SH-132 3920

Student Union:

Greg Thomson C SU-102 5940
Patrick Areffi F SU-108 5932
Alton Trammell(Duke) F SU-111 5940
Aaron Burgess F SU-111 5940

Temporary Offices:

Marilyn McShane F TO 128 5599
Dale K. Sechrest F TO 127 5566
James Mason F TO 059 5696

University Hall:

Basement: Computer Staff F UH-045 3095/2657
First: Cheryl Smith C UH-109 5214
Lydia Ortega AC UH-181 5215
Khalil Daneshvar F UH-138 5189
Elsa Fernandez F UH-123 5193/3290
Ted Krug F UH-141 5221
Second: Beverly Hendricks C UH-237 5800
Karen Eastman AC UH-237 5800
Karen Newman F UH-231 5185
Jo Ann Delorey F UH-201.14 5815
Third: Taft Newman F UH-396 5042
Paul Esposito F UH-329 5250
Denise Benton F UH-327 5914
Fourth: Deidre Seitz F UH-401.21 5646

Visual Arts:

William Warehall C VA-123 b 5823
Monja Mestlin F VA 123 b 5802
Bruce Decker F VA 131 a 5803
Ken Reed F VA 123 5811

EOC STAFF

GARCIA, Debbie Health Center ext. 5241
HANSEN, Jim Physical Plant ext. 5166
ICHSAN, Tony Health/Safety ext. 5179
KRAUS, Dennis Public Safety ext. 5165
LEMMOND, Janice Procurement ext. 5142
LINGREN, Helga Student Union ext. 7201
LOGUE, Karen Human Resources ext. 5138
Mc CARRELL, Kathy Bursar ext. 5157
MERCHANT, Pamela Housing ext. 5246
NOWICKI, Steve Public Safety ext. 5165
PRINGLE, Cindi Public Affairs ext. 5007
SHEPARD, Kathy Procurement ext. 5142
WEST, Dale Human Resources ext. 5138