

California State University, San Bernardino

CSUSB ScholarWorks

CSUSB Faculty Senate records

Arthur E. Nelson University Archives

6-14-2023

Student Opinion of Teaching Effectiveness (SOTE)- College of Arts & Letters Spring 2023 Term Summary

CSUSB Faculty Senate

Follow this and additional works at: <https://scholarworks.lib.csusb.edu/facultysenate>

Recommended Citation

CSUSB Faculty Senate, "Student Opinion of Teaching Effectiveness (SOTE)- College of Arts & Letters Spring 2023 Term Summary" (2023). *CSUSB Faculty Senate records*. 567.
<https://scholarworks.lib.csusb.edu/facultysenate/567>

This Report is brought to you for free and open access by the Arthur E. Nelson University Archives at CSUSB ScholarWorks. It has been accepted for inclusion in CSUSB Faculty Senate records by an authorized administrator of CSUSB ScholarWorks. For more information, please contact scholarworks@csusb.edu.

Student Opinion of Teaching Effectiveness (SOTE)- College of Arts & Letters Spring 2023 Term Summary

1. Rate your interest in the subject matter of this course before you took the class.

	Response by Course Level			
	Lower	Upper	Grad	Total
Very High (1)	26.7%	36.6%	46.4%	31.9%
High (2)	23.1%	23.5%	26.4%	23.4%
Moderately High (3)	28.5%	22.6%	15.2%	25.3%
Moderately Low (4)	13.9%	11.1%	8.0%	12.4%
Low (5)	4.2%	4.0%	0.0%	4.0%
Very Low (6)	3.7%	2.2%	4.0%	3.0%
Mean	2.6	2.3	2.0	2.4
Median	3	2	2	2
Count	2671	2640	125	5436

2. How many class sessions did you attend?

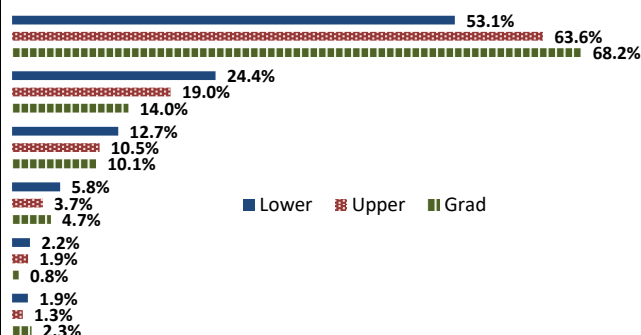
	Response by Course Level			
	Lower	Upper	Grad	Total
All (1)	47.8%	48.0%	61.7%	48.2%
Almost All (2)	44.1%	45.4%	36.7%	44.5%
More than Half (3)	6.6%	5.3%	0.8%	5.8%
Less than Half (4)	1.5%	1.3%	0.8%	1.4%
Mean	1.6	1.6	1.4	1.6
Median	2	2	1	2
Count	2507	2478	120	5105

3. Why did you take this course? Choose all that apply.

	Response by Course Level			
	Lower	Upper	Grad	Total
3a. The course fulfills a general education requirement.	67.7%	51.6%	26.4%	58.9%
3b. The course fulfills a requirement in my major.	42.2%	65.3%	83.0%	54.4%
3c. I have enjoyed the professor's class(es) in the past.	7.0%	16.6%	30.2%	12.2%
3d. The course will improve job/career opportunities.	17.7%	22.4%	28.7%	20.3%
3e. The course sounded interesting to me.	36.2%	40.5%	27.9%	38.1%

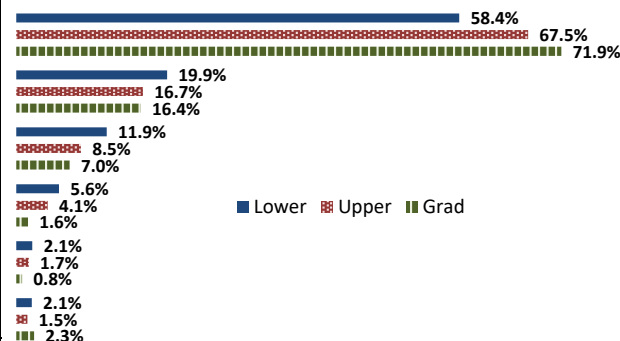
4. How would you rate the overall quality of instruction in this course?

	Response by Course Level			
	Lower	Upper	Grad	Total
Excellent (6)	53.1%	63.6%	68.2%	58.6%
Very Good (5)	24.4%	19.0%	14.0%	21.5%
Good (4)	12.7%	10.5%	10.1%	11.6%
Fair (3)	5.8%	3.7%	4.7%	4.7%
Poor (2)	2.2%	1.9%	0.8%	2.0%
Unsatisfactory (1)	1.9%	1.3%	2.3%	1.6%
Mean	5.1	5.3	5.4	5.3
Median	6	6	6	6
Count	2743	2711	129	5583



5. How would you rate your professor's specific contribution to you learning in this course?

	Response by Course Level			
	Lower	Upper	Grad	Total
Excellent (6)	58.4%	67.5%	71.9%	63.1%
Very Good (5)	19.9%	16.7%	16.4%	18.3%
Good (4)	11.9%	8.5%	7.0%	10.2%
Fair (3)	5.6%	4.1%	1.6%	4.8%
Poor (2)	2.1%	1.7%	0.8%	1.9%
Unsatisfactory (1)	2.1%	1.5%	2.3%	1.8%
Mean	5.2	5.4	5.5	5.3
Median	6	6	6	6
Count	2736	2707	128	5571



Student Opinion of Teaching Effectiveness (SOTE)- College of Business and Public Administration

Spring 2023 Term Summary

1. Rate your interest in the subject matter of this course before you took the class.

	Response by Course Level			
	Lower	Upper	Grad	Total
Very High (1)	27.3%	31.2%	37.2%	31.6%
High (2)	20.2%	24.2%	25.4%	23.9%
Moderately High (3)	28.2%	27.2%	19.9%	26.3%
Moderately Low (4)	17.9%	12.1%	10.5%	12.6%
Low (5)	2.8%	3.0%	4.1%	3.2%
Very Low (6)	3.7%	2.4%	2.8%	2.6%
Mean	2.6	2.4	2.3	2.4
Median	3	2	2	2
Count	465	2748	532	3745

2. How many class sessions did you attend?

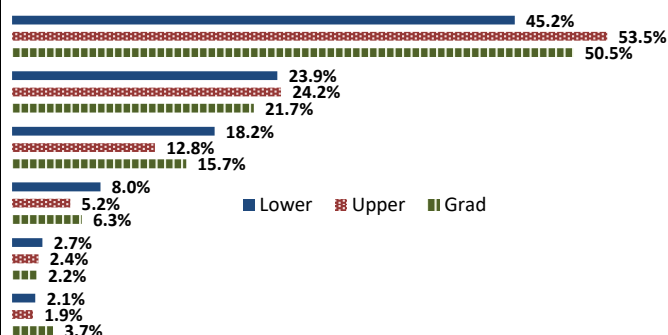
	Response by Course Level			
	Lower	Upper	Grad	Total
All (1)	53.3%	55.3%	67.4%	56.8%
Almost All (2)	32.9%	35.2%	27.4%	33.8%
More than Half (3)	7.3%	6.1%	2.6%	5.8%
Less than Half (4)	6.5%	3.4%	2.6%	3.6%
Mean	1.7	1.6	1.4	1.6
Median	1	1	1	1
Count	413	2565	503	3481

3. Why did you take this course? Choose all that apply.

	Response by Course Level			
	Lower	Upper	Grad	Total
3a. The course fulfills a general education requirement.	47.6%	39.4%	42.9%	40.9%
3b. The course fulfills a requirement in my major.	78.3%	85.7%	82.3%	84.3%
3c. I have enjoyed the professor's class(es) in the past.	4.6%	9.8%	16.4%	10.1%
3d. The course will improve job/career opportunities.	25.9%	31.7%	37.2%	31.7%
3e. The course sounded interesting to me.	21.7%	23.8%	26.9%	24.0%

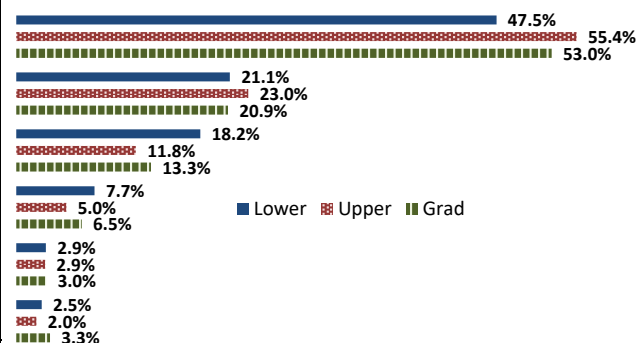
4. How would you rate the overall quality of instruction in this course?

	Response by Course Level			
	Lower	Upper	Grad	Total
Excellent (6)	45.2%	53.5%	50.5%	52.0%
Very Good (5)	23.9%	24.2%	21.7%	23.8%
Good (4)	18.2%	12.8%	15.7%	13.9%
Fair (3)	8.0%	5.2%	6.3%	5.7%
Poor (2)	2.7%	2.4%	2.2%	2.4%
Unsatisfactory (1)	2.1%	1.9%	3.7%	2.2%
Mean	4.9	5.2	5.0	5.1
Median	5	6	6	6
Count	478	2812	543	3833



5. How would you rate your professor's specific contribution to you learning in this course?

	Response by Course Level			
	Lower	Upper	Grad	Total
Excellent (6)	47.5%	55.4%	53.0%	54.1%
Very Good (5)	21.1%	23.0%	20.9%	22.4%
Good (4)	18.2%	11.8%	13.3%	12.8%
Fair (3)	7.7%	5.0%	6.5%	5.5%
Poor (2)	2.9%	2.9%	3.0%	2.9%
Unsatisfactory (1)	2.5%	2.0%	3.3%	2.3%
Mean	4.9	5.2	5.0	5.1
Median	5	6	6	6
Count	478	2806	540	3824



Student Opinion of Teaching Effectiveness (SOTE)- College of Education Spring 2023 Term Summary

1. Rate your interest in the subject matter of this course before you took the class.

	Response by Course Level			
	Lower	Upper	Grad	Total
Very High (1)	40.0%	41.6%	49.5%	46.7%
High (2)	31.4%	26.6%	23.9%	24.9%
Moderately High (3)	25.7%	22.3%	17.4%	19.2%
Moderately Low (4)	2.9%	5.7%	5.1%	5.3%
Low (5)	0.0%	2.6%	2.4%	2.4%
Very Low (6)	0.0%	1.2%	1.7%	1.5%
Mean	1.9	2.0	1.9	2.0
Median	2	2	2	2
Count	35	647	1267	1949

2. How many class sessions did you attend?

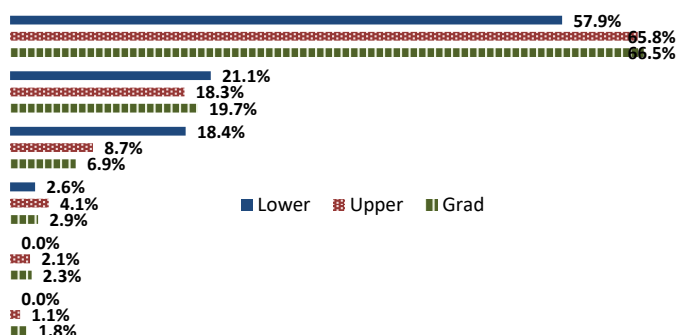
	Response by Course Level			
	Lower	Upper	Grad	Total
All (1)	71.4%	75.5%	80.3%	78.6%
Almost All (2)	28.6%	23.5%	18.9%	20.6%
More than Half (3)	0.0%	0.7%	0.5%	0.6%
Less than Half (4)	0.0%	0.3%	0.3%	0.3%
Mean	1.3	1.3	1.2	1.2
Median	1	1	1	1
Count	35	612	1185	1832

3. Why did you take this course? Choose all that apply.

	Response by Course Level			
	Lower	Upper	Grad	Total
3a. The course fulfills a general education requirement.	42.1%	29.6%	25.2%	27.0%
3b. The course fulfills a requirement in my major.	68.4%	82.8%	87.1%	85.3%
3c. I have enjoyed the professor's class(es) in the past.	7.9%	7.2%	18.2%	14.3%
3d. The course will improve job/career opportunities.	18.4%	33.2%	41.1%	38.1%
3e. The course sounded interesting to me.	31.6%	15.6%	16.5%	16.5%

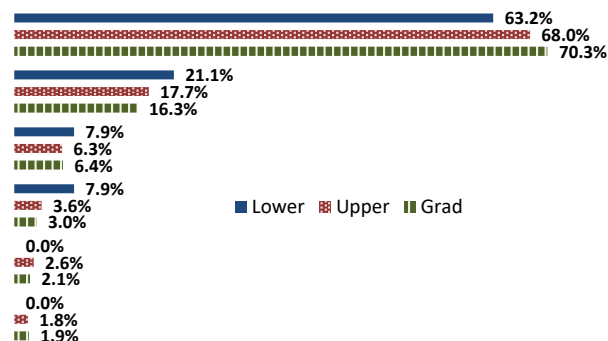
4. How would you rate the overall quality of instruction in this course?

	Response by Course Level			
	Lower	Upper	Grad	Total
Excellent (6)	57.9%	65.8%	66.5%	66.1%
Very Good (5)	21.1%	18.3%	19.7%	19.2%
Good (4)	18.4%	8.7%	6.9%	7.7%
Fair (3)	2.6%	4.1%	2.9%	3.3%
Poor (2)	0.0%	2.1%	2.3%	2.2%
Unsatisfactory (1)	0.0%	1.1%	1.8%	1.5%
Mean	5.3	5.4	5.4	5.4
Median	6	6	6	6
Count	38	667	1291	1996



5. How would you rate your professor's specific contribution to you learning in this course?

	Response by Course Level			
	Lower	Upper	Grad	Total
Excellent (6)	63.2%	68.0%	70.3%	69.4%
Very Good (5)	21.1%	17.7%	16.3%	16.9%
Good (4)	7.9%	6.3%	6.4%	6.4%
Fair (3)	7.9%	3.6%	3.0%	3.3%
Poor (2)	0.0%	2.6%	2.1%	2.2%
Unsatisfactory (1)	0.0%	1.8%	1.9%	1.9%
Mean	5.4	5.4	5.4	5.4
Median	6	6	6	6
Count	38	666	1290	1994



Student Opinion of Teaching Effectiveness (SOTE)- College of Natural Sciences Spring 2023 Term Summary

1. Rate your interest in the subject matter of this course before you took the class.

	Response by Course Level			
	Lower	Upper	Grad	Total
Very High (1)	28.0%	34.1%	55.5%	31.8%
High (2)	21.3%	26.3%	25.5%	23.9%
Moderately High (3)	26.7%	24.3%	14.6%	25.2%
Moderately Low (4)	14.8%	10.5%	3.2%	12.4%
Low (5)	5.5%	2.9%	0.5%	4.1%
Very Low (6)	3.7%	1.9%	0.9%	2.7%
Mean	2.6	2.3	1.7	2.4
Median	3	2	1	2
Count	3672	3835	220	7727

2. How many class sessions did you attend?

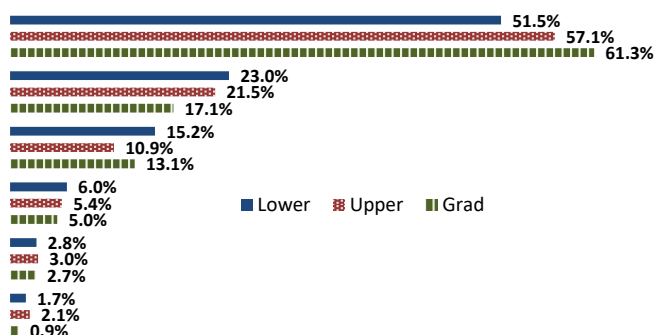
	Response by Course Level			
	Lower	Upper	Grad	Total
All (1)	52.8%	56.7%	64.6%	55.1%
Almost All (2)	40.4%	36.6%	30.6%	38.2%
More than Half (3)	5.6%	5.2%	4.3%	5.3%
Less than Half (4)	1.3%	1.5%	0.5%	1.4%
Mean	1.6	1.5	1.4	1.5
Median	1	1	1	1
Count	3388	3534	209	7131

3. Why did you take this course? Choose all that apply.

	Response by Course Level			
	Lower	Upper	Grad	Total
3a. The course fulfills a general education requirement.	52.3%	30.9%	43.2%	41.4%
3b. The course fulfills a requirement in my major.	69.8%	85.4%	85.1%	78.0%
3c. I have enjoyed the professor's class(es) in the past.	7.1%	14.6%	29.7%	11.5%
3d. The course will improve job/career opportunities.	17.0%	26.4%	49.1%	22.6%
3e. The course sounded interesting to me.	19.4%	26.3%	29.3%	23.1%

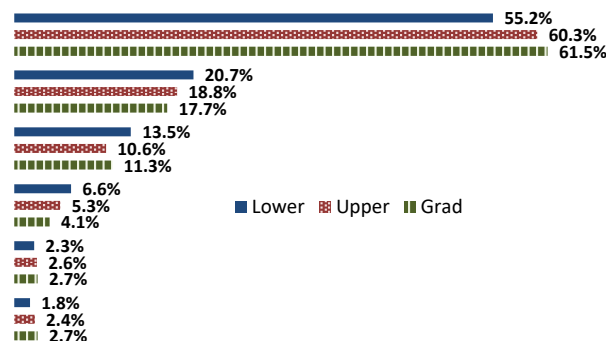
4. How would you rate the overall quality of instruction in this course?

	Response by Course Level			
	Lower	Upper	Grad	Total
Excellent (6)	51.5%	57.1%	61.3%	54.6%
Very Good (5)	23.0%	21.5%	17.1%	22.1%
Good (4)	15.2%	10.9%	13.1%	13.0%
Fair (3)	6.0%	5.4%	5.0%	5.7%
Poor (2)	2.8%	3.0%	2.7%	2.9%
Unsatisfactory (1)	1.7%	2.1%	0.9%	1.8%
Mean	5.1	5.2	5.3	5.1
Median	6	6	6	6
Count	3760	3935	222	7917



5. How would you rate your professor's specific contribution to you learning in this course?

	Response by Course Level			
	Lower	Upper	Grad	Total
Excellent (6)	55.2%	60.3%	61.5%	58.0%
Very Good (5)	20.7%	18.8%	17.7%	19.7%
Good (4)	13.5%	10.6%	11.3%	12.0%
Fair (3)	6.6%	5.3%	4.1%	5.9%
Poor (2)	2.3%	2.6%	2.7%	2.5%
Unsatisfactory (1)	1.8%	2.4%	2.7%	2.1%
Mean	5.1	5.2	5.2	5.2
Median	6	6	6	6
Count	3755	3928	221	7904



Student Opinion of Teaching Effectiveness (SOTE)- College of Social and Behavioral Sciences

Spring 2023 Term Summary

1. Rate your interest in the subject matter of this course before you took the class.

	Response by Course Level			
	Lower	Upper	Grad	Total
Very High (1)	26.3%	33.8%	41.7%	32.1%
High (2)	20.1%	24.1%	26.5%	23.1%
Moderately High (3)	27.6%	24.4%	20.6%	25.1%
Moderately Low (4)	16.4%	11.5%	7.8%	12.7%
Low (5)	5.6%	3.5%	1.9%	4.0%
Very Low (6)	4.0%	2.8%	1.5%	3.0%
Mean	2.7	2.4	2.1	2.4
Median	3	2	2	2
Count	2055	4110	539	6704

2. How many class sessions did you attend?

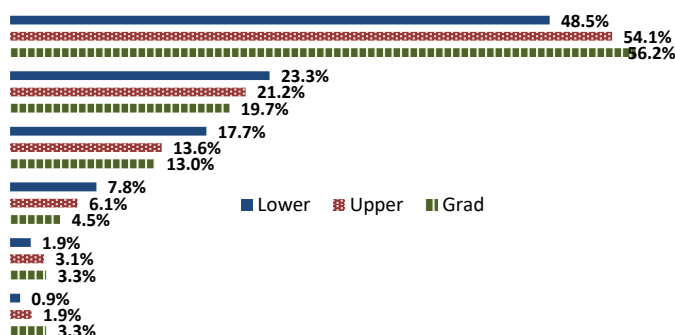
	Response by Course Level			
	Lower	Upper	Grad	Total
All (1)	61.0%	51.4%	64.3%	55.3%
Almost All (2)	30.9%	40.9%	33.9%	37.3%
More than Half (3)	5.4%	5.6%	1.2%	5.2%
Less than Half (4)	2.8%	2.2%	0.6%	2.2%
Mean	1.5	1.6	1.4	1.5
Median	1	1	1	1
Count	1868	3814	510	6192

3. Why did you take this course? Choose all that apply.

	Response by Course Level			
	Lower	Upper	Grad	Total
3a. The course fulfills a general education requirement.	63.6%	39.9%	26.0%	46.1%
3b. The course fulfills a requirement in my major.	53.8%	80.7%	89.0%	73.1%
3c. I have enjoyed the professor's class(es) in the past.	3.0%	11.7%	21.3%	9.8%
3d. The course will improve job/career opportunities.	17.7%	23.8%	24.0%	21.9%
3e. The course sounded interesting to me.	27.5%	36.9%	15.2%	32.2%

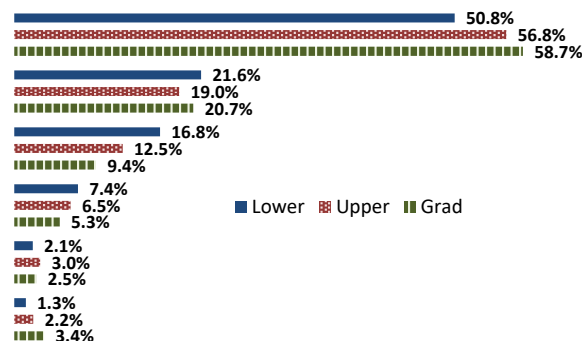
4. How would you rate the overall quality of instruction in this course?

	Response by Course Level			
	Lower	Upper	Grad	Total
Excellent (6)	48.5%	54.1%	56.2%	52.6%
Very Good (5)	23.3%	21.2%	19.7%	21.7%
Good (4)	17.7%	13.6%	13.0%	14.8%
Fair (3)	7.8%	6.1%	4.5%	6.5%
Poor (2)	1.9%	3.1%	3.3%	2.7%
Unsatisfactory (1)	0.9%	1.9%	3.3%	1.7%
Mean	5.1	5.1	5.1	5.1
Median	5	6	6	6
Count	2113	4220	553	6886



5. How would you rate your professor's specific contribution to you learning in this course?

	Response by Course Level			
	Lower	Upper	Grad	Total
Excellent (6)	50.8%	56.8%	58.7%	55.1%
Very Good (5)	21.6%	19.0%	20.7%	19.9%
Good (4)	16.8%	12.5%	9.4%	13.6%
Fair (3)	7.4%	6.5%	5.3%	6.7%
Poor (2)	2.1%	3.0%	2.5%	2.7%
Unsatisfactory (1)	1.3%	2.2%	3.4%	2.0%
Mean	5.1	5.1	5.2	5.1
Median	5	6	6	6
Count	2110	4219	552	6881



Student Opinion of Teaching Effectiveness (SOTE)- College of University Studies Spring 2023 Term Summary

1. Rate your interest in the subject matter of this course before you took the class.

	Response by Course Level			
	Lower	Upper	Grad	Total
Very High (1)	18.9%	18.2%	0.0%	18.8%
High (2)	34.0%	0.0%	0.0%	28.1%
Moderately High (3)	20.8%	45.5%	0.0%	25.0%
Moderately Low (4)	22.6%	27.3%	0.0%	23.4%
Low (5)	1.9%	9.1%	0.0%	3.1%
Very Low (6)	1.9%	0.0%	0.0%	1.6%
Mean	1.0	0.5	.	0.9
Median	1	0	.	1
Count	53	11	0	64

2. How many class sessions did you attend?

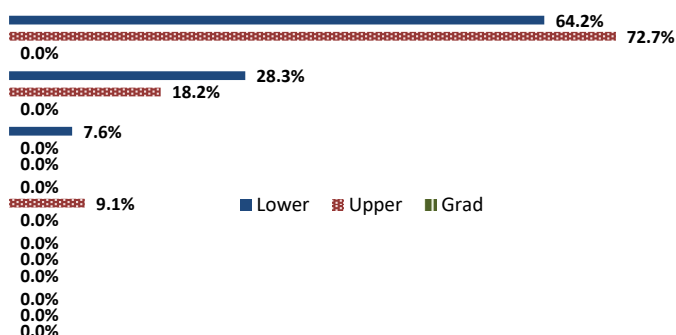
	Response by Course Level			
	Lower	Upper	Grad	Total
All (1)	51.9%	50.0%	0.0%	51.6%
Almost All (2)	48.1%	40.0%	0.0%	46.8%
More than Half (3)	0.0%	0.0%	0.0%	0.0%
Less than Half (4)	0.0%	10.0%	0.0%	1.6%
Mean	0.3	0.2	.	0.3
Median	0	0	.	0
Count	53	11	0	64

3. Why did you take this course? Choose all that apply.

	Response by Course Level			
	Lower	Upper	Grad	Total
3a. The course fulfills a general education requirement.	98.1%	45.5%	0.0%	89.1%
3b. The course fulfills a requirement in my major.	34.0%	18.2%	0.0%	31.3%
3c. I have enjoyed the professor's class(es) in the past.	35.9%	0.0%	0.0%	29.7%
3d. The course will improve job/career opportunities.	18.9%	36.4%	0.0%	21.9%
3e. The course sounded interesting to me.	28.3%	9.1%	0.0%	25.0%

4. How would you rate the overall quality of instruction in this course?

	Response by Course Level			
	Lower	Upper	Grad	Total
Excellent (6)	64.2%	72.7%	0.0%	65.6%
Very Good (5)	28.3%	18.2%	0.0%	26.6%
Good (4)	7.6%	0.0%	0.0%	6.3%
Fair (3)	0.0%	9.1%	0.0%	1.6%
Poor (2)	0.0%	0.0%	0.0%	0.0%
Unsatisfactory (1)	0.0%	0.0%	0.0%	0.0%
Mean	0.0	0.0	0.0	0.0
Median	0	0	0	0
Count	0	0	0	0



5. How would you rate your professor's specific contribution to your learning in this course?

	Response by Course Level			
	Lower	Upper	Grad	Total
Excellent (6)	0.0%	0.0%	0.0%	0.0%
Very Good (5)	0.0%	0.0%	0.0%	0.0%
Good (4)	79.3%	90.9%	0.0%	81.3%
Fair (3)	13.2%	0.0%	0.0%	10.9%
Poor (2)	5.7%	0.0%	0.0%	4.7%
Unsatisfactory (1)	1.9%	9.1%	0.0%	3.1%
Mean	0.0	0.0	0.0	0.0
Median	0	0	0	0
Count	0	0	0	0

