

California State University, San Bernardino

**CSUSB ScholarWorks**

---

CSUSB Faculty Senate records

Arthur E. Nelson University Archives

---

1-30-2024

## **Student Opinion of Teaching Effectiveness (SOTE)- College of Arts & Letters Fall 2023 Term Summary**

CSUSB Faculty Senate

Follow this and additional works at: <https://scholarworks.lib.csusb.edu/facultysenate>

---

### **Recommended Citation**

CSUSB Faculty Senate, "Student Opinion of Teaching Effectiveness (SOTE)- College of Arts & Letters Fall 2023 Term Summary" (2024). *CSUSB Faculty Senate records*. 568.

<https://scholarworks.lib.csusb.edu/facultysenate/568>

This Report is brought to you for free and open access by the Arthur E. Nelson University Archives at CSUSB ScholarWorks. It has been accepted for inclusion in CSUSB Faculty Senate records by an authorized administrator of CSUSB ScholarWorks. For more information, please contact [scholarworks@csusb.edu](mailto:scholarworks@csusb.edu).

## Student Opinion of Teaching Effectiveness (SOTE)- College of Arts & Letters Fall 2023 Term Summary

**1. Rate your interest in the subject matter of this course before you took the class.**

	Response by Course Level			
	Lower	Upper	Grad	Total
Very High (1)	23.8%	36.0%	43.3%	29.6%
High (2)	22.1%	22.1%	22.4%	22.1%
Moderately High (3)	28.3%	25.1%	19.4%	26.7%
Moderately Low (4)	16.8%	10.5%	8.2%	13.8%
Low (5)	5.3%	4.0%	3.7%	4.7%
Very Low (6)	3.7%	2.3%	3.0%	3.1%
Mean	2.7	2.3	2.2	2.5
Median	3	2	2	2
Count	3242	2671	134	6047

**2. How many class sessions did you attend?**

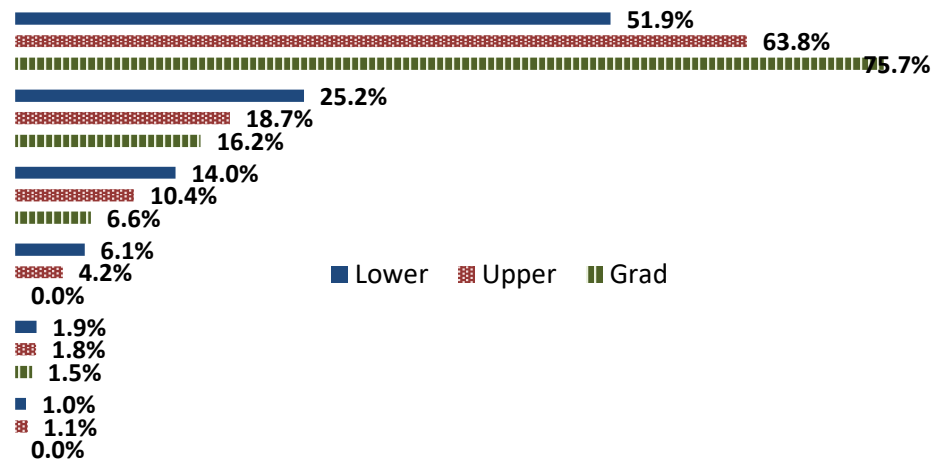
	Response by Course Level			
	Lower	Upper	Grad	Total
All (1)	50.4%	52.2%	48.5%	51.2%
Almost All (2)	42.9%	41.2%	46.2%	42.2%
More than Half (3)	5.0%	4.6%	4.6%	4.8%
Less than Half (4)	1.8%	2.0%	0.8%	1.8%
Mean	1.6	1.6	1.6	1.6
Median	1	1	2	1
Count	3027	2517	130	5674

**3. Why did you take this course? Choose all that apply.**

	Response by Course Level			
	Lower	Upper	Grad	Total
3a. The course fulfills a general education requirement.	72.0%	55.2%	26.5%	63.6%
3b. The course fulfills a requirement in my major.	44.3%	62.4%	80.9%	53.1%
3c. I have enjoyed the professor's class(es) in the past.	4.7%	13.8%	25.0%	9.1%
3d. The course will improve job/career opportunities.	18.6%	22.1%	18.4%	20.1%
3e. The course sounded interesting to me.	30.3%	44.3%	37.5%	36.6%

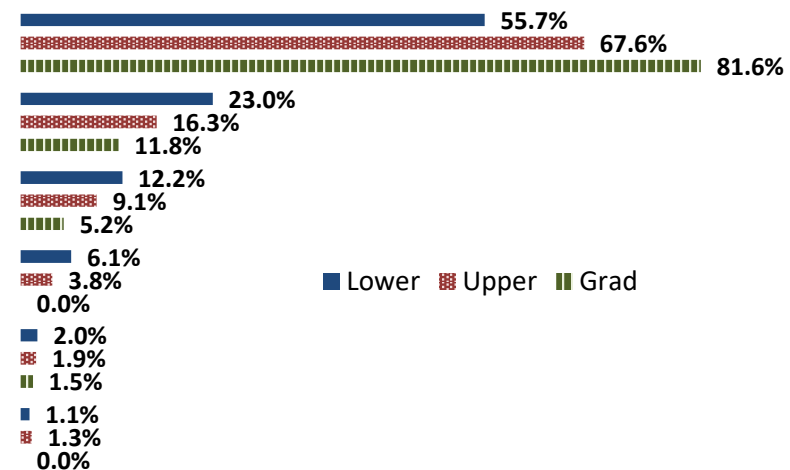
**4. How would you rate the overall quality of instruction in this course?**

	Response by Course Level			
	Lower	Upper	Grad	Total
Excellent (6)	51.9%	63.8%	75.7%	57.7%
Very Good (5)	25.2%	18.7%	16.2%	22.2%
Good (4)	14.0%	10.4%	6.6%	12.2%
Fair (3)	6.1%	4.2%	0.0%	5.1%
Poor (2)	1.9%	1.8%	1.5%	1.9%
Unsatisfactory (1)	1.0%	1.1%	0.0%	1.0%
Mean	5.2	5.4	5.6	5.3
Median	6	6	6	6
Count	3350	2739	136	6225



**5. How would you rate your professor's specific contribution to your learning in this course?**

	Response by Course Level			
	Lower	Upper	Grad	Total
Excellent (6)	55.7%	67.6%	81.6%	61.5%
Very Good (5)	23.0%	16.3%	11.8%	19.8%
Good (4)	12.2%	9.1%	5.2%	10.7%
Fair (3)	6.1%	3.8%	0.0%	4.9%
Poor (2)	2.0%	1.9%	1.5%	1.9%
Unsatisfactory (1)	1.1%	1.3%	0.0%	1.1%
Mean	5.2	5.4	5.7	5.3
Median	6	6	6	6
Count	3339	2737	136	6212



# Student Opinion of Teaching Effectiveness (SOTE)- College of Business and Public Administration Fall 2023 Term Summary

**1. Rate your interest in the subject matter of this course before you took the class.**

	Response by Course Level			
	Lower	Upper	Grad	Total
Very High (1)	21.8%	29.4%	32.5%	28.6%
High (2)	23.3%	22.3%	25.4%	22.9%
Moderately High (3)	30.0%	29.0%	26.1%	28.7%
Moderately Low (4)	14.9%	13.7%	9.5%	13.3%
Low (5)	5.2%	4.0%	5.2%	4.4%
Very Low (6)	4.8%	1.5%	1.4%	2.1%
Mean	2.7	2.5	2.3	2.5
Median	3	2	2	2
Count	630	2543	560	3733

**2. How many class sessions did you attend?**

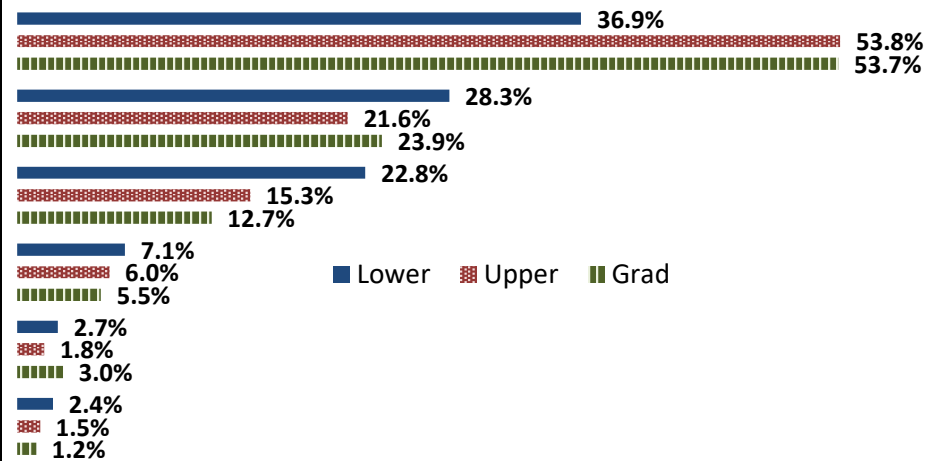
	Response by Course Level			
	Lower	Upper	Grad	Total
All (1)	65.6%	58.2%	70.9%	61.4%
Almost All (2)	22.2%	34.3%	24.8%	30.8%
More than Half (3)	7.0%	4.6%	2.8%	4.7%
Less than Half (4)	5.2%	2.9%	1.5%	3.1%
Mean	1.5	1.5	1.3	1.5
Median	1	1	1	1
Count	582	2371	529	3482

**3. Why did you take this course? Choose all that apply.**

	Response by Course Level			
	Lower	Upper	Grad	Total
3a. The course fulfills a general education requirement.	48.9%	40.7%	41.5%	42.2%
3b. The course fulfills a requirement in my major.	75.2%	87.1%	84.8%	84.8%
3c. I have enjoyed the professor's class(es) in the past.	4.4%	8.4%	11.5%	8.2%
3d. The course will improve job/career opportunities.	24.5%	31.9%	36.6%	31.3%
3e. The course sounded interesting to me.	17.7%	25.0%	23.1%	23.5%

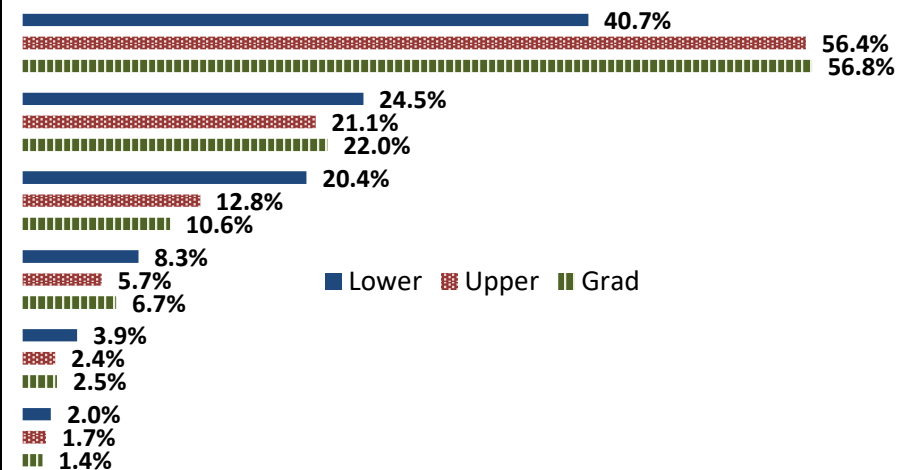
**4. How would you rate the overall quality of instruction in this course?**

	Response by Course Level			
	Lower	Upper	Grad	Total
Excellent (6)	36.9%	53.8%	53.7%	51.0%
Very Good (5)	28.3%	21.6%	23.9%	23.1%
Good (4)	22.8%	15.3%	12.7%	16.1%
Fair (3)	7.1%	6.0%	5.5%	6.1%
Poor (2)	2.7%	1.8%	3.0%	2.1%
Unsatisfactory (1)	2.4%	1.5%	1.2%	1.6%
Mean	4.8	5.2	5.2	5.1
Median	5	6	6	6
Count	637	2604	566	3807



**5. How would you rate your professor's specific contribution to your learning in this course?**

	Response by Course Level			
	Lower	Upper	Grad	Total
Excellent (6)	40.7%	56.4%	56.8%	53.8%
Very Good (5)	24.5%	21.1%	22.0%	21.8%
Good (4)	20.4%	12.8%	10.6%	13.7%
Fair (3)	8.3%	5.7%	6.7%	6.3%
Poor (2)	3.9%	2.4%	2.5%	2.6%
Unsatisfactory (1)	2.0%	1.7%	1.4%	1.7%
Mean	4.8	5.2	5.2	5.1
Median	5	6	6	6
Count	636	2598	565	3799



## Student Opinion of Teaching Effectiveness (SOTE)- College of Education Fall 2023 Term Summary

**1. Rate your interest in the subject matter of this course before you took the class.**

	Response by Course Level			
	Lower	Upper	Grad	Total
Very High (1)	31.0%	35.3%	49.3%	44.2%
High (2)	23.8%	27.6%	22.2%	24.1%
Moderately High (3)	33.3%	25.7%	19.3%	21.7%
Moderately Low (4)	2.4%	8.3%	6.2%	6.8%
Low (5)	7.1%	2.1%	1.7%	2.0%
Very Low (6)	2.4%	1.0%	1.3%	1.3%
Mean	2.4	2.2	1.9	2.0
Median	2	2	2	2
Count	42	677	1283	2002

**2. How many class sessions did you attend?**

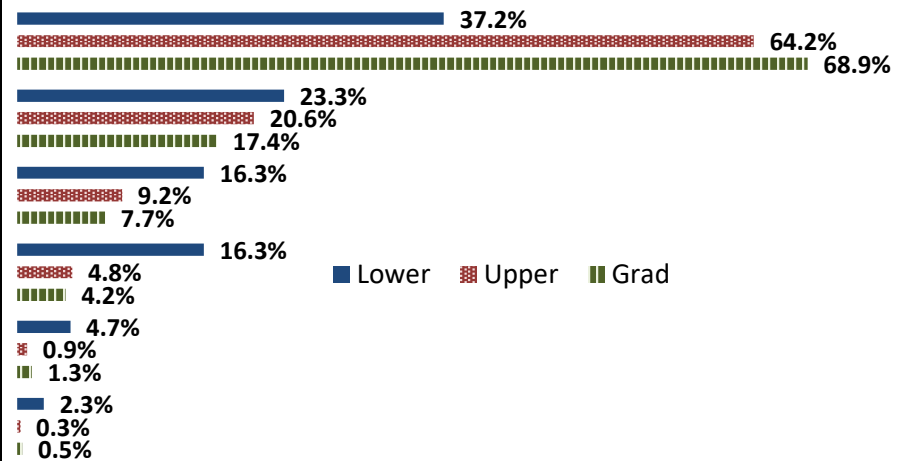
	Response by Course Level			
	Lower	Upper	Grad	Total
All (1)	61.0%	80.8%	83.2%	81.9%
Almost All (2)	26.8%	17.8%	16.3%	17.1%
More than Half (3)	9.8%	0.8%	0.4%	0.8%
Less than Half (4)	2.4%	0.6%	0.1%	0.3%
Mean	1.5	1.2	1.2	1.2
Median	1	1	1	1
Count	41	640	1184	1865

**3. Why did you take this course? Choose all that apply.**

	Response by Course Level			
	Lower	Upper	Grad	Total
3a. The course fulfills a general education requirement.	53.5%	30.6%	26.7%	28.6%
3b. The course fulfills a requirement in my major.	51.2%	84.8%	84.5%	83.9%
3c. I have enjoyed the professor's class(es) in the past.	4.7%	6.7%	14.2%	11.5%
3d. The course will improve job/career opportunities.	20.9%	36.0%	43.5%	40.5%
3e. The course sounded interesting to me.	41.9%	15.8%	17.5%	17.4%

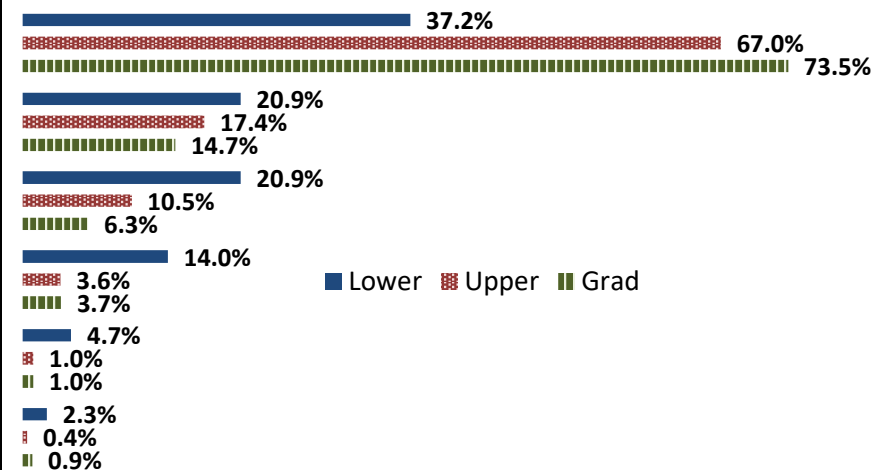
**4. How would you rate the overall quality of instruction in this course?**

	Response by Course Level			
	Lower	Upper	Grad	Total
Excellent (6)	37.2%	64.2%	68.9%	66.7%
Very Good (5)	23.3%	20.6%	17.4%	18.6%
Good (4)	16.3%	9.2%	7.7%	8.4%
Fair (3)	16.3%	4.8%	4.2%	4.7%
Poor (2)	4.7%	0.9%	1.3%	1.2%
Unsatisfactory (1)	2.3%	0.3%	0.5%	0.4%
Mean	4.7	5.4	5.5	5.4
Median	5	6	6	6
Count	43	688	1304	2035



**5. How would you rate your professor's specific contribution to your learning in this course?**

	Response by Course Level			
	Lower	Upper	Grad	Total
Excellent (6)	37.2%	67.0%	73.5%	70.5%
Very Good (5)	20.9%	17.4%	14.7%	15.7%
Good (4)	20.9%	10.5%	6.3%	8.0%
Fair (3)	14.0%	3.6%	3.7%	3.9%
Poor (2)	4.7%	1.0%	1.0%	1.1%
Unsatisfactory (1)	2.3%	0.4%	0.9%	0.8%
Mean	4.7	5.4	5.5	5.5
Median	5	6	6	6
Count	43	688	1304	2035



## Student Opinion of Teaching Effectiveness (SOTE)- College of Natural Sciences Fall 2023 Term Summary

**1. Rate your interest in the subject matter of this course before you took the class.**

	Response by Course Level			
	Lower	Upper	Grad	Total
Very High (1)	25.3%	32.6%	48.6%	29.4%
High (2)	22.8%	24.8%	33.4%	24.1%
Moderately High (3)	26.6%	27.0%	12.9%	26.2%
Moderately Low (4)	15.9%	10.8%	4.5%	13.2%
Low (5)	5.5%	2.8%	0.3%	4.1%
Very Low (6)	4.0%	2.0%	0.3%	2.9%
Mean	2.7	2.3	1.8	2.5
Median	3	2	2	2
Count	4504	3699	356	8559

**2. How many class sessions did you attend?**

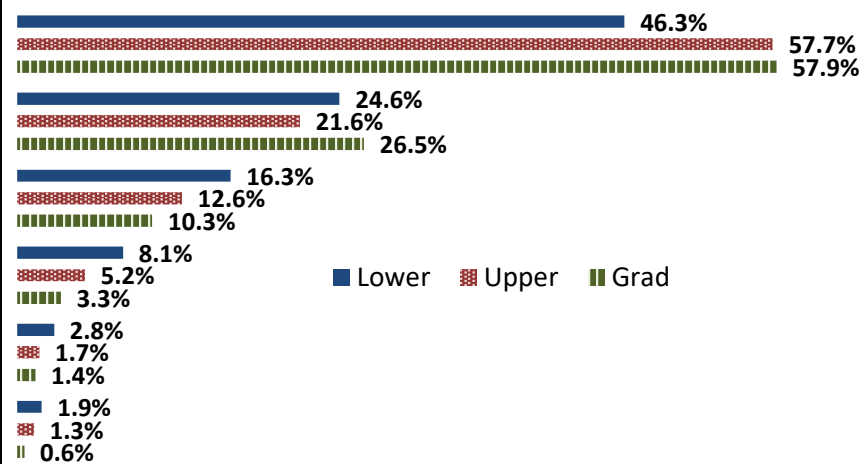
	Response by Course Level			
	Lower	Upper	Grad	Total
All (1)	55.3%	58.2%	66.3%	57.0%
Almost All (2)	37.5%	36.1%	32.0%	36.7%
More than Half (3)	5.4%	4.4%	1.2%	4.8%
Less than Half (4)	1.8%	1.4%	0.6%	1.6%
Mean	1.5	1.5	1.4	1.5
Median	1	1	1	1
Count	4164	3439	344	7947

**3. Why did you take this course? Choose all that apply.**

	Response by Course Level			
	Lower	Upper	Grad	Total
3a. The course fulfills a general education requirement.	58.2%	36.5%	52.1%	48.6%
3b. The course fulfills a requirement in my major.	68.1%	82.0%	82.5%	74.7%
3c. I have enjoyed the professor's class(es) in the past.	4.7%	12.3%	20.1%	8.6%
3d. The course will improve job/career opportunities.	19.7%	27.5%	59.9%	24.7%
3e. The course sounded interesting to me.	19.7%	29.0%	38.4%	24.5%

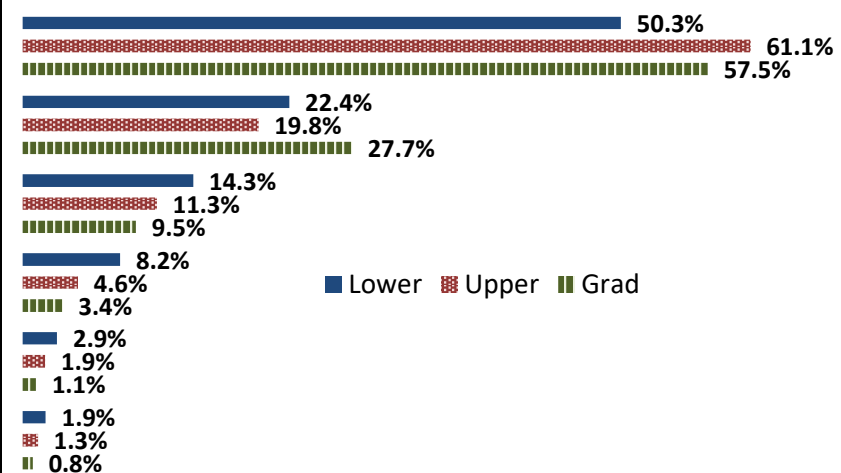
**4. How would you rate the overall quality of instruction in this course?**

	Response by Course Level			
	Lower	Upper	Grad	Total
Excellent (6)	46.3%	57.7%	57.9%	51.7%
Very Good (5)	24.6%	21.6%	26.5%	23.4%
Good (4)	16.3%	12.6%	10.3%	14.5%
Fair (3)	8.1%	5.2%	3.3%	6.6%
Poor (2)	2.8%	1.7%	1.4%	2.3%
Unsatisfactory (1)	1.9%	1.3%	0.6%	1.6%
Mean	5.0	5.2	5.3	5.1
Median	5	6	6	6
Count	4642	3767	359	8768



**5. How would you rate your professor's specific contribution to your learning in this course?**

	Response by Course Level			
	Lower	Upper	Grad	Total
Excellent (6)	50.3%	61.1%	57.5%	55.2%
Very Good (5)	22.4%	19.8%	27.7%	21.5%
Good (4)	14.3%	11.3%	9.5%	12.8%
Fair (3)	8.2%	4.6%	3.4%	6.5%
Poor (2)	2.9%	1.9%	1.1%	2.4%
Unsatisfactory (1)	1.9%	1.3%	0.8%	1.6%
Mean	5.0	5.3	5.3	5.2
Median	5	6	6	6
Count	4633	3760	358	8751



# Student Opinion of Teaching Effectiveness (SOTE)- College of Social and Behavioral Sciences Fall 2023 Term Summary

**1. Rate your interest in the subject matter of this course before you took the class.**

	Response by Course Level			
	Lower	Upper	Grad	Total
Very High (1)	22.9%	34.9%	36.8%	30.0%
High (2)	20.8%	24.4%	21.9%	22.7%
Moderately High (3)	28.7%	24.4%	26.1%	26.3%
Moderately Low (4)	17.7%	10.8%	8.9%	13.6%
Low (5)	6.4%	3.1%	1.8%	4.4%
Very Low (6)	3.5%	2.3%	4.6%	3.0%
Mean	2.7	2.3	2.3	2.5
Median	3	2	2	2
Count	3027	3625	549	7201

**2. How many class sessions did you attend?**

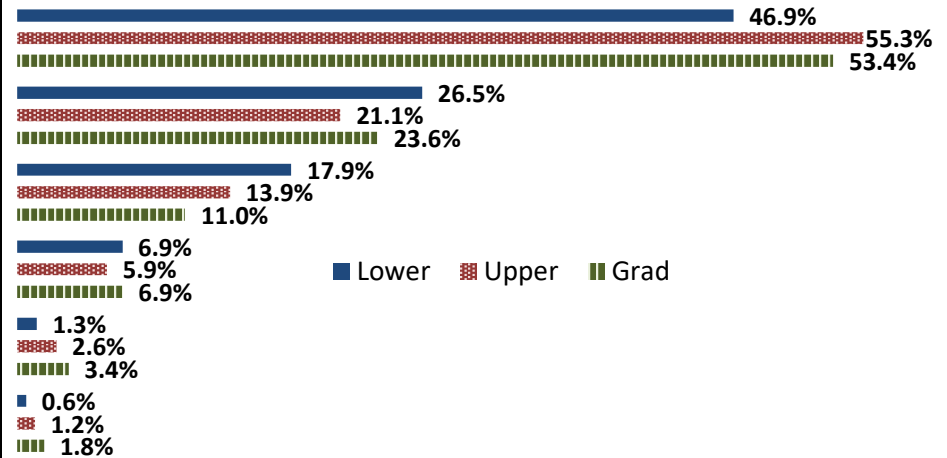
	Response by Course Level			
	Lower	Upper	Grad	Total
All (1)	66.9%	56.6%	67.2%	61.7%
Almost All (2)	27.2%	37.3%	31.0%	32.6%
More than Half (3)	3.9%	4.6%	1.8%	4.1%
Less than Half (4)	2.0%	1.5%	0.0%	1.6%
Mean	1.4	1.5	1.3	1.5
Median	1	1	1	1
Count	2751	3351	509	6611

**3. Why did you take this course? Choose all that apply.**

	Response by Course Level			
	Lower	Upper	Grad	Total
3a. The course fulfills a general education requirement.	70.6%	41.7%	26.2%	52.7%
3b. The course fulfills a requirement in my major.	49.6%	78.9%	90.4%	67.5%
3c. I have enjoyed the professor's class(es) in the past.	3.9%	10.0%	10.3%	7.4%
3d. The course will improve job/career opportunities.	15.0%	23.3%	26.2%	20.1%
3e. The course sounded interesting to me.	23.1%	37.7%	13.3%	29.7%

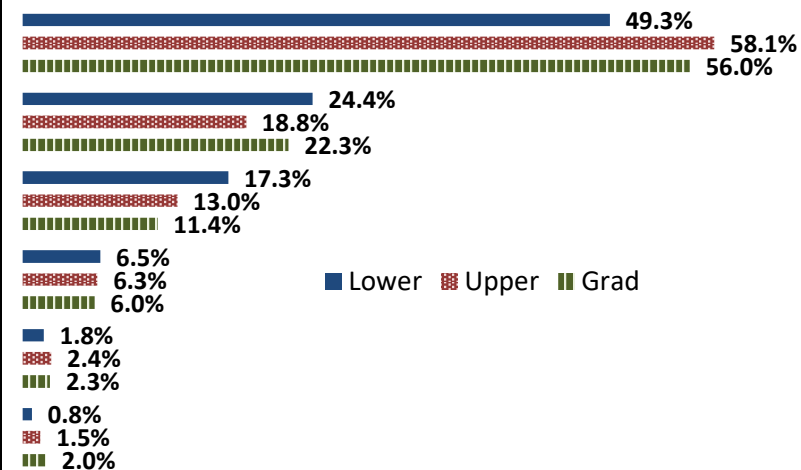
**4. How would you rate the overall quality of instruction in this course?**

	Response by Course Level			
	Lower	Upper	Grad	Total
Excellent (6)	46.9%	55.3%	53.4%	51.6%
Very Good (5)	26.5%	21.1%	23.6%	23.6%
Good (4)	17.9%	13.9%	11.0%	15.4%
Fair (3)	6.9%	5.9%	6.9%	6.4%
Poor (2)	1.3%	2.6%	3.4%	2.1%
Unsatisfactory (1)	0.6%	1.2%	1.8%	1.0%
Mean	5.1	5.2	5.1	5.1
Median	5	6	6	6
Count	3108	3708	564	7380



**5. How would you rate your professor's specific contribution to your learning in this course?**

	Response by Course Level			
	Lower	Upper	Grad	Total
Excellent (6)	49.3%	58.1%	56.0%	54.2%
Very Good (5)	24.4%	18.8%	22.3%	21.4%
Good (4)	17.3%	13.0%	11.4%	14.7%
Fair (3)	6.5%	6.3%	6.0%	6.4%
Poor (2)	1.8%	2.4%	2.3%	2.1%
Unsatisfactory (1)	0.8%	1.5%	2.0%	1.2%
Mean	5.1	5.2	5.2	5.2
Median	5	6	6	6
Count	3103	3702	564	7369





## Student Opinion of Teaching Effectiveness (SOTE)- College of University Studies Fall 2023 Term Summary

**1. Rate your interest in the subject matter of this course before you took the class.**

	Response by Course Level			
	Lower	Upper	Grad	Total
Very High (1)	13.9%	3.5%	0.0%	9.9%
High (2)	19.0%	16.5%	0.0%	18.0%
Moderately High (3)	32.1%	50.6%	0.0%	39.2%
Moderately Low (4)	24.1%	15.3%	0.0%	20.7%
Low (5)	5.8%	5.9%	0.0%	5.9%
Very Low (6)	5.1%	8.2%	0.0%	6.3%
Mean	3.0	3.3	.	3.1
Median	3	3	.	3
Count	137	85	0	222

**2. How many class sessions did you attend?**

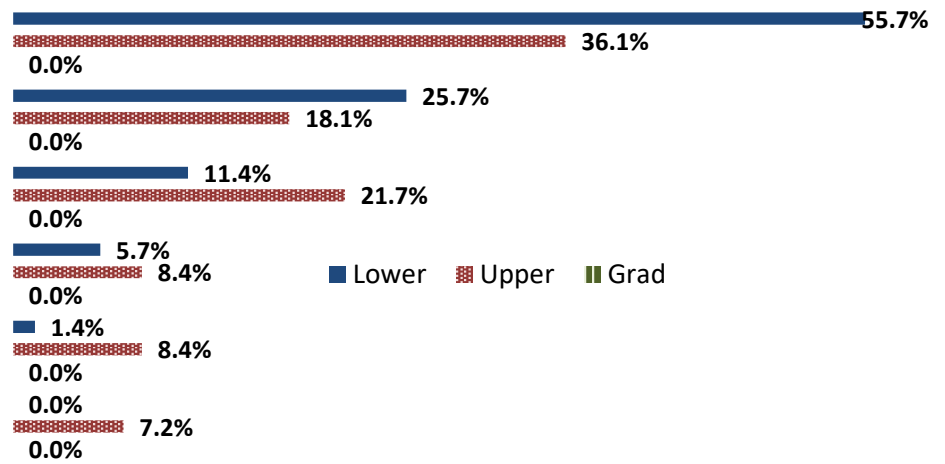
	Response by Course Level			
	Lower	Upper	Grad	Total
All (1)	65.4%	63.5%	0.0%	64.7%
Almost All (2)	31.5%	36.5%	0.0%	33.3%
More than Half (3)	3.2%	0.0%	0.0%	2.0%
Less than Half (4)	0.0%	0.0%	0.0%	0.0%
Mean	1.4	1.4	.	1.4
Median	1	1	.	1
Count	127	74	0	201

**3. Why did you take this course? Choose all that apply.**

	Response by Course Level			
	Lower	Upper	Grad	Total
3a. The course fulfills a general education requirement.	90.0%	76.5%	0.0%	84.9%
3b. The course fulfills a requirement in my major.	21.4%	36.5%	0.0%	27.1%
3c. I have enjoyed the professor's class(es) in the past.	4.3%	17.7%	0.0%	9.3%
3d. The course will improve job/career opportunities.	8.6%	2.4%	0.0%	6.2%
3e. The course sounded interesting to me.	19.3%	7.1%	0.0%	14.7%

**4. How would you rate the overall quality of instruction in this course?**

	Response by Course Level			
	Lower	Upper	Grad	Total
Excellent (6)	55.7%	36.1%	0.0%	48.4%
Very Good (5)	25.7%	18.1%	0.0%	22.9%
Good (4)	11.4%	21.7%	0.0%	15.3%
Fair (3)	5.7%	8.4%	0.0%	6.7%
Poor (2)	1.4%	8.4%	0.0%	4.0%
Unsatisfactory (1)	0.0%	7.2%	0.0%	2.7%
Mean	5.3	4.4	.	5.0
Median	6	5	.	5
Count	140	83	0	223



**5. How would you rate your professor's specific contribution to your learning in this course?**

	Response by Course Level			
	Lower	Upper	Grad	Total
Excellent (6)	61.4%	37.4%	0.0%	52.5%
Very Good (5)	24.3%	21.7%	0.0%	23.3%
Good (4)	8.6%	18.1%	0.0%	12.1%
Fair (3)	4.3%	14.5%	0.0%	8.1%
Poor (2)	1.4%	0.0%	0.0%	0.9%
Unsatisfactory (1)	0.0%	8.4%	0.0%	3.1%
Mean	5.4	4.6	.	5.1
Median	6	5	.	6
Count	140	83	0	223

