

California State University, San Bernardino

CSUSB ScholarWorks

CSUSB Faculty Senate records

Arthur E. Nelson University Archives

2-10-2023

Student Opinion of Teaching Effectiveness (SOTE)- College of Arts & Letters Fall 2022 Term Summary

CSUSB Faculty Senate

Follow this and additional works at: <https://scholarworks.lib.csusb.edu/facultysenate>

Recommended Citation

CSUSB Faculty Senate, "Student Opinion of Teaching Effectiveness (SOTE)- College of Arts & Letters Fall 2022 Term Summary" (2023). *CSUSB Faculty Senate records*. 569.
<https://scholarworks.lib.csusb.edu/facultysenate/569>

This Report is brought to you for free and open access by the Arthur E. Nelson University Archives at CSUSB ScholarWorks. It has been accepted for inclusion in CSUSB Faculty Senate records by an authorized administrator of CSUSB ScholarWorks. For more information, please contact scholarworks@csusb.edu.

Student Opinion of Teaching Effectiveness (SOTE)- College of Arts & Letters

Fall 2022 Term Summary

1. Rate your interest in the subject matter of this course before you took the class.

	Response by Course Level			
	Lower	Upper	Grad	Total
Very High (1)	24.3%	32.7%	53.3%	29.1%
High (2)	20.8%	23.1%	24.4%	22.0%
Moderately High (3)	29.5%	26.5%	14.1%	27.7%
Moderately Low (4)	16.3%	11.3%	5.2%	13.6%
Low (5)	6.2%	4.1%	2.2%	5.1%
Very Low (6)	2.9%	2.2%	0.7%	2.5%
Mean	2.7	2.4	1.8	2.5
Median	3	2	1	2
Count	3046	3091	135	6272

2. How many class sessions did you attend?

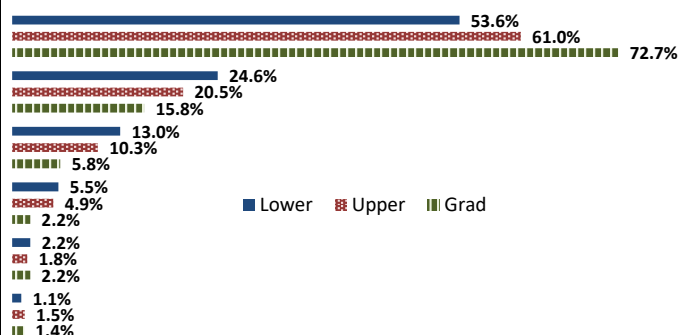
	Response by Course Level			
	Lower	Upper	Grad	Total
All (1)	47.0%	51.1%	62.3%	49.4%
Almost All (2)	44.5%	41.0%	32.3%	42.5%
More than Half (3)	6.4%	5.5%	4.6%	5.9%
Less than Half (4)	2.1%	2.4%	0.8%	2.2%
Mean	1.6	1.6	1.4	1.6
Median	2	1	1	2
Count	2853	2867	130	5850

3. Why did you take this course? Choose all that apply.

	Response by Course Level			
	Lower	Upper	Grad	Total
3a. The course fulfills a general education requirement.	73.9%	54.9%	39.6%	63.8%
3b. The course fulfills a requirement in my major.	39.5%	65.6%	84.9%	53.4%
3c. I have enjoyed the professor's class(es) in the past.	5.0%	12.4%	31.7%	9.2%
3d. The course will improve job/career opportunities.	17.8%	20.2%	33.1%	19.3%
3e. The course sounded interesting to me.	33.1%	40.5%	39.6%	36.9%

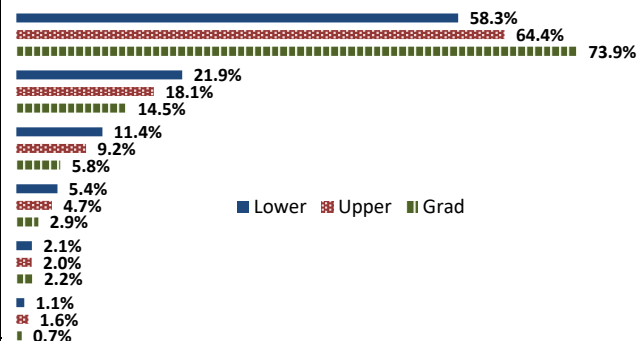
4. How would you rate the overall quality of instruction in this course?

	Response by Course Level			
	Lower	Upper	Grad	Total
Excellent (6)	53.6%	61.0%	72.7%	57.7%
Very Good (5)	24.6%	20.5%	15.8%	22.4%
Good (4)	13.0%	10.3%	5.8%	11.5%
Fair (3)	5.5%	4.9%	2.2%	5.2%
Poor (2)	2.2%	1.8%	2.2%	2.0%
Unsatisfactory (1)	1.1%	1.5%	1.4%	1.3%
Mean	5.2	5.3	5.5	5.2
Median	6	6	6	6
Count	3126	3182	139	6447



5. How would you rate your professor's specific contribution to you learning in this course?

	Response by Course Level			
	Lower	Upper	Grad	Total
Excellent (6)	58.3%	64.4%	73.9%	61.6%
Very Good (5)	21.9%	18.1%	14.5%	19.9%
Good (4)	11.4%	9.2%	5.8%	10.2%
Fair (3)	5.4%	4.7%	2.9%	5.0%
Poor (2)	2.1%	2.0%	2.2%	2.0%
Unsatisfactory (1)	1.1%	1.6%	0.7%	1.3%
Mean	5.3	5.3	5.5	5.3
Median	6	6	6	6
Count	3119	3180	138	6437



Student Opinion of Teaching Effectiveness (SOTE)- College of Business and Public Administration

Fall 2022 Term Summary

1. Rate your interest in the subject matter of this course before you took the class.

	Response by Course Level			
	Lower	Upper	Grad	Total
Very High (1)	24.5%	31.1%	40.5%	31.3%
High (2)	20.8%	24.4%	23.4%	23.7%
Moderately High (3)	28.6%	27.3%	20.8%	26.6%
Moderately Low (4)	17.0%	11.5%	10.8%	12.3%
Low (5)	5.1%	3.4%	3.3%	3.6%
Very Low (6)	4.0%	2.4%	1.2%	2.5%
Mean	2.7	2.4	2.2	2.4
Median	3	2	2	2
Count	605	2745	509	3859

2. How many class sessions did you attend?

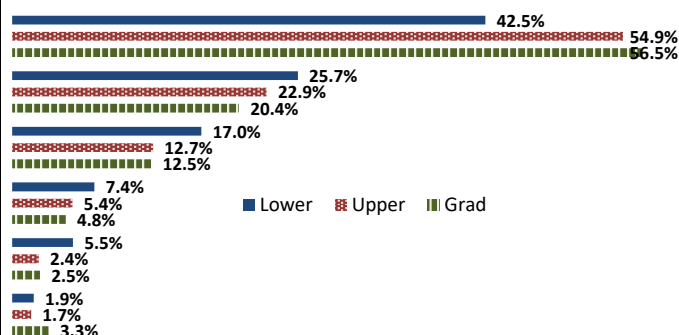
	Response by Course Level			
	Lower	Upper	Grad	Total
All (1)	55.3%	57.3%	66.9%	58.3%
Almost All (2)	29.7%	33.7%	28.2%	32.3%
More than Half (3)	8.0%	5.8%	2.9%	5.8%
Less than Half (4)	7.1%	3.2%	2.0%	3.7%
Mean	1.7	1.5	1.4	1.5
Median	1	1	1	1
Count	566	2559	490	3615

3. Why did you take this course? Choose all that apply.

	Response by Course Level			
	Lower	Upper	Grad	Total
3a. The course fulfills a general education requirement.	47.4%	39.2%	41.0%	40.7%
3b. The course fulfills a requirement in my major.	75.5%	88.0%	84.9%	85.6%
3c. I have enjoyed the professor's class(es) in the past.	7.2%	9.2%	14.0%	9.5%
3d. The course will improve job/career opportunities.	27.7%	32.1%	40.0%	32.5%
3e. The course sounded interesting to me.	25.0%	23.7%	28.9%	24.6%

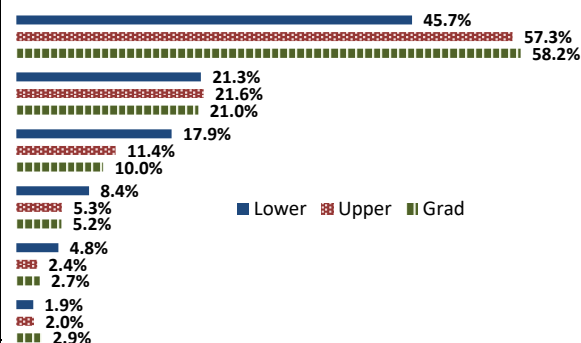
4. How would you rate the overall quality of instruction in this course?

	Response by Course Level			
	Lower	Upper	Grad	Total
Excellent (6)	42.5%	54.9%	56.5%	53.2%
Very Good (5)	25.7%	22.9%	20.4%	23.0%
Good (4)	17.0%	12.7%	12.5%	13.3%
Fair (3)	7.4%	5.4%	4.8%	5.7%
Poor (2)	5.5%	2.4%	2.5%	2.9%
Unsatisfactory (1)	1.9%	1.7%	3.3%	2.0%
Mean	4.9	5.2	5.1	5.1
Median	5	6	6	6
Count	623	2801	520	3944



5. How would you rate your professor's specific contribution to you learning in this course?

	Response by Course Level			
	Lower	Upper	Grad	Total
Excellent (6)	45.7%	57.3%	58.2%	55.6%
Very Good (5)	21.3%	21.6%	21.0%	21.5%
Good (4)	17.9%	11.4%	10.0%	12.3%
Fair (3)	8.4%	5.3%	5.2%	5.7%
Poor (2)	4.8%	2.4%	2.7%	2.8%
Unsatisfactory (1)	1.9%	2.0%	2.9%	2.1%
Mean	4.9	5.2	5.2	5.1
Median	5	6	6	6
Count	620	2796	519	3935



Student Opinion of Teaching Effectiveness (SOTE)- College of Education Fall 2022 Term Summary

1. Rate your interest in the subject matter of this course before you took the class.

	Response by Course Level			
	Lower	Upper	Grad	Total
Very High (1)	41.4%	38.6%	47.5%	43.8%
High (2)	32.8%	26.9%	24.4%	25.6%
Moderately High (3)	19.0%	26.3%	17.3%	20.9%
Moderately Low (4)	6.9%	6.1%	6.8%	6.5%
Low (5)	0.0%	1.5%	2.8%	2.2%
Very Low (6)	0.0%	0.7%	1.2%	1.0%
Mean	1.9	2.1	2.0	2.0
Median	2	2	2	2
Count	58	975	1405	2438

2. How many class sessions did you attend?

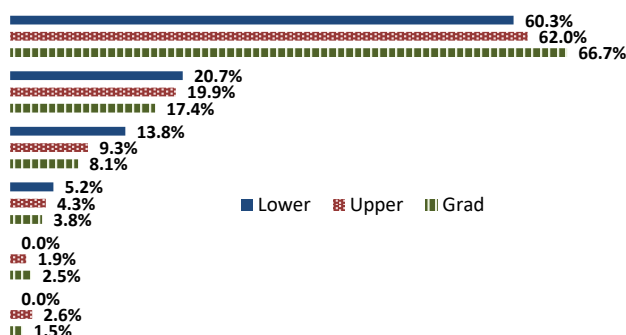
	Response by Course Level			
	Lower	Upper	Grad	Total
All (1)	64.2%	73.3%	81.0%	77.5%
Almost All (2)	35.9%	25.1%	17.4%	20.9%
More than Half (3)	0.0%	1.0%	1.1%	1.0%
Less than Half (4)	0.0%	0.7%	0.5%	0.6%
Mean	1.4	1.3	1.2	1.2
Median	1	1	1	1
Count	53	922	1319	2294

3. Why did you take this course? Choose all that apply.

	Response by Course Level			
	Lower	Upper	Grad	Total
3a. The course fulfills a general education requirement.	41.4%	31.0%	23.7%	27.0%
3b. The course fulfills a requirement in my major.	81.0%	82.5%	86.4%	84.7%
3c. I have enjoyed the professor's class(es) in the past.	3.5%	4.5%	12.1%	8.9%
3d. The course will improve job/career opportunities.	17.2%	35.6%	37.9%	36.5%
3e. The course sounded interesting to me.	25.9%	13.4%	13.9%	14.0%

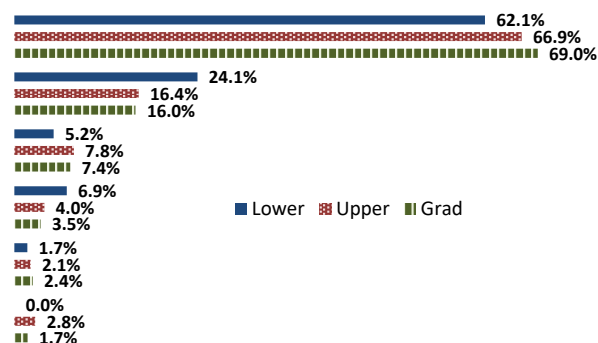
4. How would you rate the overall quality of instruction in this course?

	Response by Course Level			
	Lower	Upper	Grad	Total
Excellent (6)	60.3%	62.0%	66.7%	64.7%
Very Good (5)	20.7%	19.9%	17.4%	18.4%
Good (4)	13.8%	9.3%	8.1%	8.7%
Fair (3)	5.2%	4.3%	3.8%	4.0%
Poor (2)	0.0%	1.9%	2.5%	2.2%
Unsatisfactory (1)	0.0%	2.6%	1.5%	1.9%
Mean	5.4	5.3	5.4	5.3
Median	6	6	6	6
Count	58	987	1440	2485



5. How would you rate your professor's specific contribution to you learning in this course?

	Response by Course Level			
	Lower	Upper	Grad	Total
Excellent (6)	62.1%	66.9%	69.0%	68.0%
Very Good (5)	24.1%	16.4%	16.0%	16.3%
Good (4)	5.2%	7.8%	7.4%	7.5%
Fair (3)	6.9%	4.0%	3.5%	3.8%
Poor (2)	1.7%	2.1%	2.4%	2.3%
Unsatisfactory (1)	0.0%	2.8%	1.7%	2.1%
Mean	5.4	5.3	5.4	5.4
Median	6	6	6	6
Count	58	982	1439	2479



Student Opinion of Teaching Effectiveness (SOTE)- College of Natural Sciences

Fall 2022 Term Summary

1. Rate your interest in the subject matter of this course before you took the class.

	Response by Course Level			
	Lower	Upper	Grad	Total
Very High (1)	22.7%	32.2%	45.8%	27.8%
High (2)	22.8%	25.6%	33.4%	24.4%
Moderately High (3)	28.2%	25.2%	14.6%	26.4%
Moderately Low (4)	16.9%	11.6%	4.9%	14.1%
Low (5)	5.5%	3.1%	1.3%	4.3%
Very Low (6)	3.9%	2.2%	0.0%	3.0%
Mean	2.7	2.3	1.8	2.5
Median	3	2	2	2
Count	4763	4200	308	9271

2. How many class sessions did you attend?

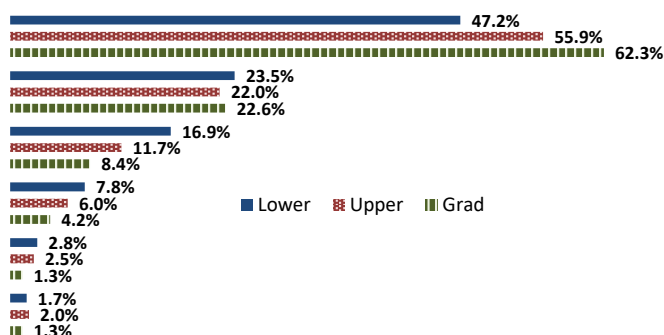
	Response by Course Level			
	Lower	Upper	Grad	Total
All (1)	56.2%	56.9%	62.5%	56.7%
Almost All (2)	36.5%	36.0%	33.8%	36.2%
More than Half (3)	5.3%	5.1%	3.4%	5.2%
Less than Half (4)	2.0%	2.0%	0.3%	1.9%
Mean	1.5	1.5	1.4	1.5
Median	1	1	1	1
Count	4417	3889	296	8602

3. Why did you take this course? Choose all that apply.

	Response by Course Level			
	Lower	Upper	Grad	Total
3a. The course fulfills a general education requirement.	57.8%	33.5%	44.2%	46.4%
3b. The course fulfills a requirement in my major.	69.3%	82.7%	86.1%	75.9%
3c. I have enjoyed the professor's class(es) in the past.	4.0%	12.0%	23.9%	8.2%
3d. The course will improve job/career opportunities.	18.5%	24.0%	54.5%	22.2%
3e. The course sounded interesting to me.	19.8%	27.8%	40.3%	24.1%

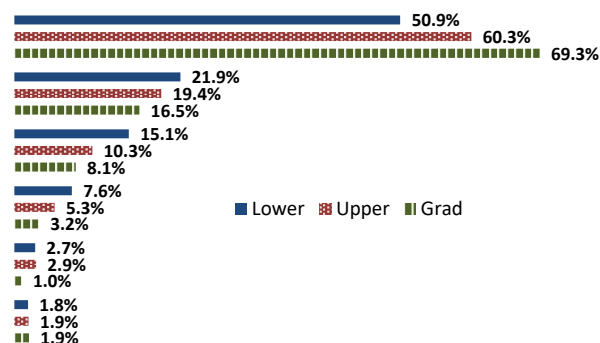
4. How would you rate the overall quality of instruction in this course?

	Response by Course Level			
	Lower	Upper	Grad	Total
Excellent (6)	47.2%	55.9%	62.3%	51.6%
Very Good (5)	23.5%	22.0%	22.6%	22.8%
Good (4)	16.9%	11.7%	8.4%	14.2%
Fair (3)	7.8%	6.0%	4.2%	6.9%
Poor (2)	2.8%	2.5%	1.3%	2.6%
Unsatisfactory (1)	1.7%	2.0%	1.3%	1.8%
Mean	5.0	5.2	5.4	5.1
Median	5	6	6	6
Count	4889	4286	310	9485



5. How would you rate your professor's specific contribution to you learning in this course?

	Response by Course Level			
	Lower	Upper	Grad	Total
Excellent (6)	50.9%	60.3%	69.3%	55.7%
Very Good (5)	21.9%	19.4%	16.5%	20.6%
Good (4)	15.1%	10.3%	8.1%	12.7%
Fair (3)	7.6%	5.3%	3.2%	6.4%
Poor (2)	2.7%	2.9%	1.0%	2.7%
Unsatisfactory (1)	1.8%	1.9%	1.9%	1.8%
Mean	5.1	5.2	5.4	5.1
Median	5	6	6	6
Count	4888	4280	309	9477



Student Opinion of Teaching Effectiveness (SOTE)- College of Social and Behavioral Sciences

Fall 2022 Term Summary

1. Rate your interest in the subject matter of this course before you took the class.

	Response by Course Level			
	Lower	Upper	Grad	Total
Very High (1)	22.8%	33.6%	41.7%	29.7%
High (2)	22.4%	24.2%	23.8%	23.4%
Moderately High (3)	28.1%	25.5%	20.6%	26.3%
Moderately Low (4)	17.3%	11.4%	10.4%	13.8%
Low (5)	5.5%	3.2%	2.2%	4.1%
Very Low (6)	3.9%	2.2%	1.4%	2.9%
Mean	2.7	2.3	2.1	2.5
Median	3	2	2	2
Count	3436	4235	588	8259

2. How many class sessions did you attend?

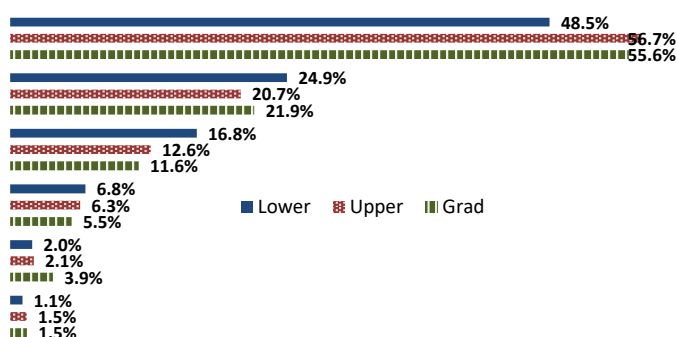
	Response by Course Level			
	Lower	Upper	Grad	Total
All (1)	63.1%	49.8%	66.3%	56.5%
Almost All (2)	29.4%	42.5%	32.8%	36.4%
More than Half (3)	4.4%	5.4%	0.7%	4.7%
Less than Half (4)	3.2%	2.3%	0.2%	2.5%
Mean	1.5	1.6	1.3	1.5
Median	1	2	1	1
Count	3137	3926	552	7615

3. Why did you take this course? Choose all that apply.

	Response by Course Level			
	Lower	Upper	Grad	Total
3a. The course fulfills a general education requirement.	70.0%	40.3%	23.2%	51.5%
3b. The course fulfills a requirement in my major.	50.5%	80.5%	91.8%	68.8%
3c. I have enjoyed the professor's class(es) in the past.	3.5%	9.3%	9.7%	6.9%
3d. The course will improve job/career opportunities.	16.8%	23.6%	22.2%	20.7%
3e. The course sounded interesting to me.	27.3%	37.6%	17.9%	31.9%

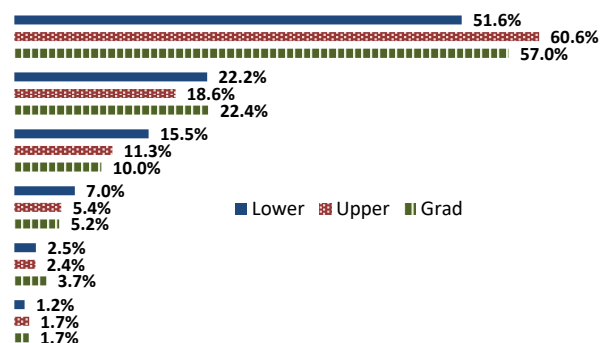
4. How would you rate the overall quality of instruction in this course?

	Response by Course Level			
	Lower	Upper	Grad	Total
Excellent (6)	48.5%	56.7%	55.6%	53.2%
Very Good (5)	24.9%	20.7%	21.9%	22.6%
Good (4)	16.8%	12.6%	11.6%	14.3%
Fair (3)	6.8%	6.3%	5.5%	6.4%
Poor (2)	2.0%	2.1%	3.9%	2.2%
Unsatisfactory (1)	1.1%	1.5%	1.5%	1.3%
Mean	5.1	5.2	5.2	5.1
Median	5	6	6	6
Count	3545	4331	597	8473



5. How would you rate your professor's specific contribution to you learning in this course?

	Response by Course Level			
	Lower	Upper	Grad	Total
Excellent (6)	51.6%	60.6%	57.0%	56.6%
Very Good (5)	22.2%	18.6%	22.4%	20.4%
Good (4)	15.5%	11.3%	10.0%	13.0%
Fair (3)	7.0%	5.4%	5.2%	6.1%
Poor (2)	2.5%	2.4%	3.7%	2.5%
Unsatisfactory (1)	1.2%	1.7%	1.7%	1.5%
Mean	5.1	5.2	5.2	5.2
Median	5	6	6	6
Count	3539	4324	598	8461



Student Opinion of Teaching Effectiveness (SOTE)- College of University Studies

Fall 2022 Term Summary

1. Rate your interest in the subject matter of this course before you took the class.

	Response by Course Level			
	Lower	Upper	Grad	Total
Very High (1)	12.1%	13.8%	0.0%	12.4%
High (2)	13.9%	10.3%	0.0%	13.4%
Moderately High (3)	26.7%	51.7%	0.0%	30.4%
Moderately Low (4)	32.7%	13.8%	0.0%	29.9%
Low (5)	12.7%	6.9%	0.0%	11.9%
Very Low (6)	1.8%	3.5%	0.0%	2.1%
Mean	3.3	3.0	.	3.2
Median	3	3	.	3
Count	165	29	0	194

2. How many class sessions did you attend?

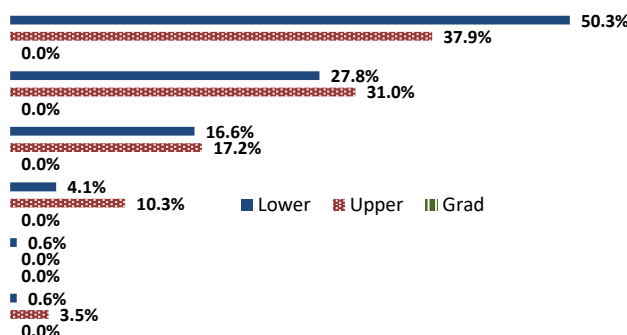
	Response by Course Level			
	Lower	Upper	Grad	Total
All (1)	53.4%	25.0%	0.0%	49.4%
Almost All (2)	39.9%	75.0%	0.0%	44.8%
More than Half (3)	4.7%	0.0%	0.0%	4.1%
Less than Half (4)	2.0%	0.0%	0.0%	1.7%
Mean	1.6	1.7	.	1.6
Median	1	2	.	2
Count	148	24	0	172

3. Why did you take this course? Choose all that apply.

	Response by Course Level			
	Lower	Upper	Grad	Total
3a. The course fulfills a general education requirement.	90.5%	75.9%	0.0%	88.4%
3b. The course fulfills a requirement in my major.	26.6%	13.8%	0.0%	24.8%
3c. I have enjoyed the professor's class(es) in the past.	1.2%	6.9%	0.0%	2.0%
3d. The course will improve job/career opportunities.	9.5%	20.7%	0.0%	11.1%
3e. The course sounded interesting to me.	13.6%	27.6%	0.0%	15.7%

4. How would you rate the overall quality of instruction in this course?

	Response by Course Level			
	Lower	Upper	Grad	Total
Excellent (6)	50.3%	37.9%	0.0%	48.5%
Very Good (5)	27.8%	31.0%	0.0%	28.3%
Good (4)	16.6%	17.2%	0.0%	16.7%
Fair (3)	4.1%	10.3%	0.0%	5.1%
Poor (2)	0.6%	0.0%	0.0%	0.5%
Unsatisfactory (1)	0.6%	3.5%	0.0%	1.0%
Mean	5.2	4.9	.	5.2
Median	6	5	.	5
Count	169	29	0	198



5. How would you rate your professor's specific contribution to you learning in this course?

	Response by Course Level			
	Lower	Upper	Grad	Total
Excellent (6)	53.6%	44.8%	0.0%	52.3%
Very Good (5)	25.6%	24.1%	0.0%	25.4%
Good (4)	15.5%	27.6%	0.0%	17.3%
Fair (3)	3.6%	0.0%	0.0%	3.1%
Poor (2)	1.2%	0.0%	0.0%	1.0%
Unsatisfactory (1)	0.6%	3.5%	0.0%	1.0%
Mean	5.2	5.0	.	5.2
Median	6	5	.	6
Count	168	29	0	197

