

California State University, San Bernardino

**CSUSB ScholarWorks**

---

CSUSB Faculty Senate records

Arthur E. Nelson University Archives

---

2022

## **Student Opinion of Teaching Effectiveness (SOTE)- College of Arts & Letters Spring 2022 Term Summary (2022)**

CSUSB Faculty Senate

Follow this and additional works at: <https://scholarworks.lib.csusb.edu/facultysenate>

---

### **Recommended Citation**

CSUSB Faculty Senate, "Student Opinion of Teaching Effectiveness (SOTE)- College of Arts & Letters Spring 2022 Term Summary (2022)" (2022). *CSUSB Faculty Senate records*. 363.  
<https://scholarworks.lib.csusb.edu/facultysenate/363>

This Report is brought to you for free and open access by the Arthur E. Nelson University Archives at CSUSB ScholarWorks. It has been accepted for inclusion in CSUSB Faculty Senate records by an authorized administrator of CSUSB ScholarWorks. For more information, please contact [scholarworks@csusb.edu](mailto:scholarworks@csusb.edu).

## Student Opinion of Teaching Effectiveness (SOTE)- College of Arts & Letters Spring 2022 Term Summary

### 1. Rate your interest in the subject matter of this course before you took the class.

	Response by Course Level			
	Lower	Upper	Grad	Total
Very High (1)	26.6%	33.9%	50.3%	31.0%
High (2)	21.8%	25.0%	21.4%	23.4%
Moderately High (3)	27.9%	24.1%	20.7%	25.8%
Moderately Low (4)	15.9%	11.7%	6.2%	13.5%
Low (5)	5.1%	3.2%	1.4%	4.1%
Very Low (6)	2.7%	2.2%	0.0%	2.4%
Mean	2.6	2.3	1.9	2.4
Median	3	2	1	2
Count	2010	2132	145	4287

### 2. How many class sessions did you attend?

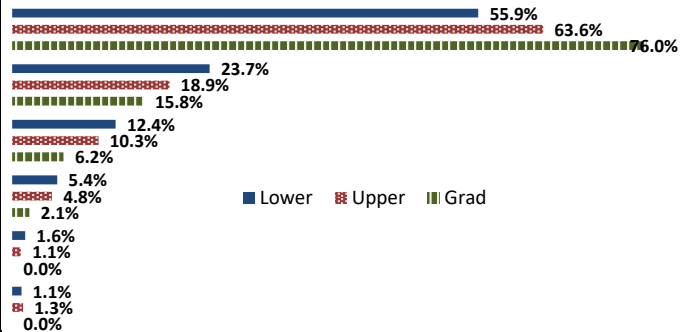
	Response by Course Level			
	Lower	Upper	Grad	Total
All (1)	54.6%	53.6%	52.5%	54.0%
Almost All (2)	38.0%	40.9%	44.7%	39.6%
More than Half (3)	5.2%	3.6%	2.1%	4.3%
Less than Half (4)	2.2%	2.0%	0.7%	2.1%
Mean	1.5	1.5	1.5	1.5
Median	1	1	1	1
Count	1852	1973	141	3966

### 3. Why did you take this course? Choose all that apply.

	Response by Course Level			
	Lower	Upper	Grad	Total
3a. The course fulfills a general education requirement.	72.0%	53.7%	32.9%	61.6%
3b. The course fulfills a requirement in my major.	38.3%	63.7%	84.3%	52.5%
3c. I have enjoyed the professor's class(es) in the past.	7.7%	16.8%	34.3%	13.1%
3d. The course will improve job/career opportunities.	16.8%	19.9%	30.8%	18.8%
3e. The course sounded interesting to me.	37.1%	40.1%	38.4%	38.6%

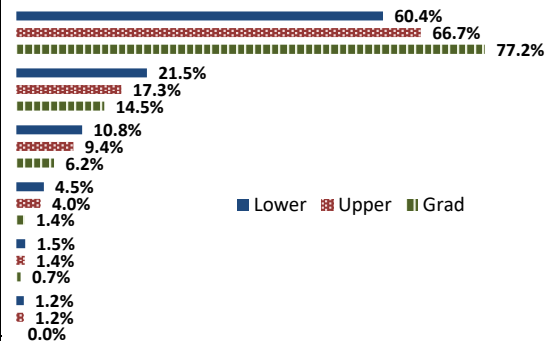
### 4. How would you rate the overall quality of instruction in this course?

	Response by Course Level			
	Lower	Upper	Grad	Total
Excellent (6)	55.9%	63.6%	76.0%	60.4%
Very Good (5)	23.7%	18.9%	15.8%	21.0%
Good (4)	12.4%	10.3%	6.2%	11.2%
Fair (3)	5.4%	4.8%	2.1%	5.0%
Poor (2)	1.6%	1.1%	0.0%	1.3%
Unsatisfactory (1)	1.1%	1.3%	0.0%	1.2%
Mean	5.2	5.4	5.7	5.3
Median	6	6	6	6
Count	2057	2195	146	4398



### 5. How would you rate your professor's specific contribution to your learning in this course?

	Response by Course Level			
	Lower	Upper	Grad	Total
Excellent (6)	60.4%	66.7%	77.2%	64.1%
Very Good (5)	21.5%	17.3%	14.5%	19.2%
Good (4)	10.8%	9.4%	6.2%	10.0%
Fair (3)	4.5%	4.0%	1.4%	4.2%
Poor (2)	1.5%	1.4%	0.7%	1.4%
Unsatisfactory (1)	1.2%	1.2%	0.0%	1.2%
Mean	5.3	5.4	5.7	5.4
Median	6	6	6	6
Count	2057	2190	145	4392



# Student Opinion of Teaching Effectiveness (SOTE)- College of Business and Public Administration Spring 2022 Term Summary

## 1. Rate your interest in the subject matter of this course before you took the class.

	Response by Course Level			
	Lower	Upper	Grad	Total
Very High (1)	24.4%	31.0%	35.8%	30.9%
High (2)	19.7%	24.1%	23.9%	23.5%
Moderately High (3)	30.0%	27.0%	23.7%	26.9%
Moderately Low (4)	15.9%	11.5%	11.0%	12.0%
Low (5)	4.9%	3.9%	2.4%	3.8%
Very Low (6)	5.1%	2.5%	3.2%	3.0%
Mean	2.7	2.4	2.3	2.4
Median	3	2	2	2
Count	390	2241	464	3095

## 2. How many class sessions did you attend?

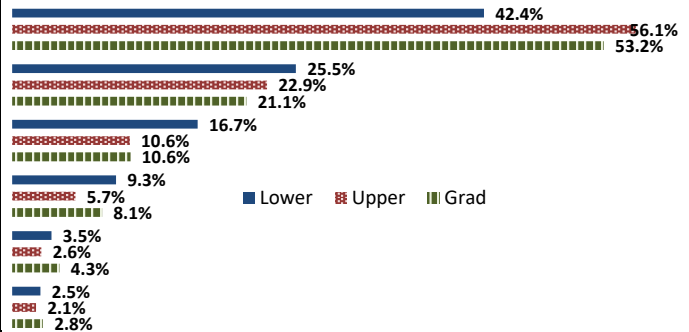
	Response by Course Level			
	Lower	Upper	Grad	Total
All (1)	58.3%	60.6%	73.3%	62.3%
Almost All (2)	28.3%	31.9%	25.3%	30.5%
More than Half (3)	7.2%	4.3%	1.1%	4.1%
Less than Half (4)	6.1%	3.3%	0.2%	3.2%
Mean	1.6	1.5	1.3	1.5
Median	1	1	1	1
Count	360	2071	446	2877

## 3. Why did you take this course? Choose all that apply.

	Response by Course Level			
	Lower	Upper	Grad	Total
3a. The course fulfills a general education requirement.	48.5%	36.0%	35.1%	37.4%
3b. The course fulfills a requirement in my major.	78.5%	86.5%	83.2%	85.0%
3c. I have enjoyed the professor's class(es) in the past.	5.1%	10.6%	8.9%	9.7%
3d. The course will improve job/career opportunities.	25.0%	31.0%	33.4%	30.6%
3e. The course sounded interesting to me.	20.7%	24.5%	22.3%	23.7%

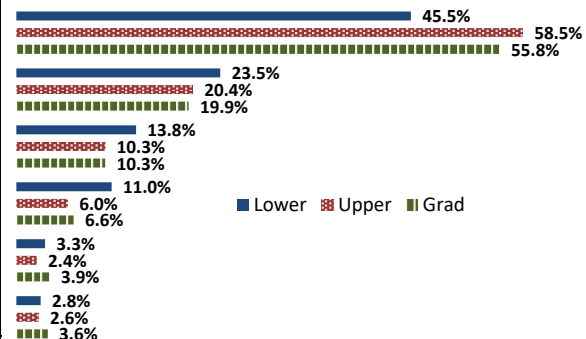
## 4. How would you rate the overall quality of instruction in this course?

	Response by Course Level			
	Lower	Upper	Grad	Total
Excellent (6)	42.4%	56.1%	53.2%	53.9%
Very Good (5)	25.5%	22.9%	21.1%	23.0%
Good (4)	16.7%	10.6%	10.6%	11.4%
Fair (3)	9.3%	5.7%	8.1%	6.5%
Poor (2)	3.5%	2.6%	4.3%	3.0%
Unsatisfactory (1)	2.5%	2.1%	2.8%	2.3%
Mean	4.9	5.2	5.0	5.1
Median	5	6	6	6
Count	396	2287	470	3153



## 5. How would you rate your professor's specific contribution to you learning in this course?

	Response by Course Level			
	Lower	Upper	Grad	Total
Excellent (6)	45.5%	58.5%	55.8%	56.5%
Very Good (5)	23.5%	20.4%	19.9%	20.7%
Good (4)	13.8%	10.3%	10.3%	10.7%
Fair (3)	11.0%	6.0%	6.6%	6.7%
Poor (2)	3.3%	2.4%	3.9%	2.7%
Unsatisfactory (1)	2.8%	2.6%	3.6%	2.8%
Mean	4.9	5.2	5.1	5.1
Median	5	6	6	6
Count	391	2287	468	3146



## Student Opinion of Teaching Effectiveness (SOTE)- College of Education Spring 2022 Term Summary

### 1. Rate your interest in the subject matter of this course before you took the class.

	Response by Course Level			
	Lower	Upper	Grad	Total
Very High (1)	40.5%	40.2%	49.6%	46.1%
High (2)	28.6%	28.9%	27.8%	28.2%
Moderately High (3)	21.4%	23.2%	16.1%	18.7%
Moderately Low (4)	7.1%	5.4%	5.0%	5.2%
Low (5)	0.0%	1.9%	1.0%	1.3%
Very Low (6)	2.4%	0.4%	0.6%	0.6%
Mean	2.0	2.0	1.8	1.9
Median	2	2	2	2
Count	42	522	940	1504

### 2. How many class sessions did you attend?

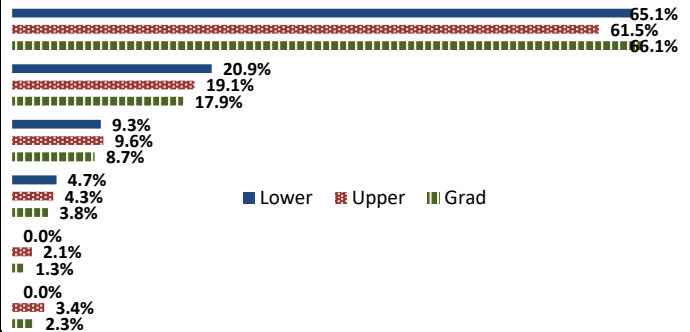
	Response by Course Level			
	Lower	Upper	Grad	Total
All (1)	76.9%	84.5%	82.2%	82.8%
Almost All (2)	20.5%	14.3%	17.1%	16.2%
More than Half (3)	2.6%	1.0%	0.8%	0.9%
Less than Half (4)	0.0%	0.2%	0.0%	0.1%
Mean	1.3	1.2	1.2	1.2
Median	1	1	1	1
Count	39	491	885	1415

### 3. Why did you take this course? Choose all that apply.

	Response by Course Level			
	Lower	Upper	Grad	Total
3a. The course fulfills a general education requirement.	34.9%	35.5%	24.0%	28.3%
3b. The course fulfills a requirement in my major.	65.1%	80.3%	85.8%	83.3%
3c. I have enjoyed the professor's class(es) in the past.	2.3%	3.9%	18.5%	13.0%
3d. The course will improve job/career opportunities.	14.0%	33.2%	34.2%	33.3%
3e. The course sounded interesting to me.	32.6%	13.0%	12.5%	13.2%

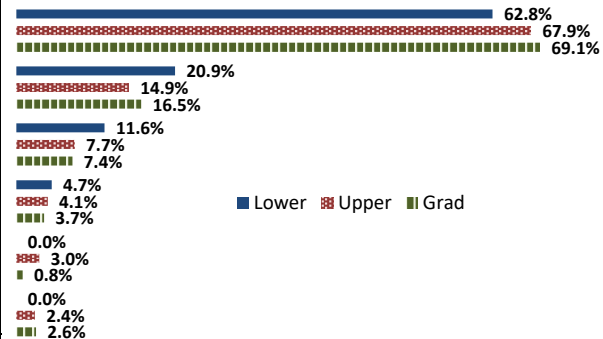
### 4. How would you rate the overall quality of instruction in this course?

	Response by Course Level			
	Lower	Upper	Grad	Total
Excellent (6)	65.1%	61.5%	66.1%	64.5%
Very Good (5)	20.9%	19.1%	17.9%	18.4%
Good (4)	9.3%	9.6%	8.7%	9.0%
Fair (3)	4.7%	4.3%	3.8%	4.0%
Poor (2)	0.0%	2.1%	1.3%	1.5%
Unsatisfactory (1)	0.0%	3.4%	2.3%	2.6%
Mean	5.5	5.2	5.4	5.3
Median	6	6	6	6
Count	43	533	959	1535



### 5. How would you rate your professor's specific contribution to you learning in this course?

	Response by Course Level			
	Lower	Upper	Grad	Total
Excellent (6)	62.8%	67.9%	69.1%	68.5%
Very Good (5)	20.9%	14.9%	16.5%	16.0%
Good (4)	11.6%	7.7%	7.4%	7.6%
Fair (3)	4.7%	4.1%	3.7%	3.8%
Poor (2)	0.0%	3.0%	0.8%	1.6%
Unsatisfactory (1)	0.0%	2.4%	2.6%	2.5%
Mean	5.4	5.3	5.4	5.4
Median	6	6	6	6
Count	43	532	960	1535



## Student Opinion of Teaching Effectiveness (SOTE)- College of Natural Sciences Spring 2022 Term Summary

### 1. Rate your interest in the subject matter of this course before you took the class.

	Response by Course Level			
	Lower	Upper	Grad	Total
Very High (1)	22.3%	30.7%	54.2%	27.6%
High (2)	22.3%	24.9%	30.5%	23.9%
Moderately High (3)	29.8%	27.4%	11.9%	28.0%
Moderately Low (4)	14.9%	11.5%	2.3%	12.8%
Low (5)	5.8%	3.2%	1.1%	4.3%
Very Low (6)	4.9%	2.3%	0.0%	3.4%
Mean	2.7	2.4	1.7	2.5
Median	3	2	1	2
Count	2582	2920	177	5679

### 2. How many class sessions did you attend?

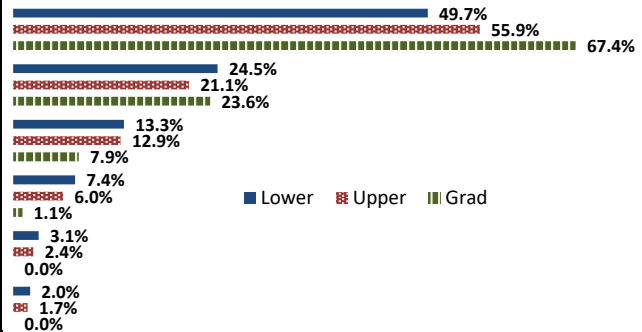
	Response by Course Level			
	Lower	Upper	Grad	Total
All (1)	55.4%	61.8%	64.3%	59.0%
Almost All (2)	36.6%	32.8%	30.4%	34.4%
More than Half (3)	5.0%	3.9%	4.1%	4.4%
Less than Half (4)	3.0%	1.5%	1.2%	2.2%
Mean	1.6	1.5	1.4	1.5
Median	1	1	1	1
Count	2382	2688	171	5241

### 3. Why did you take this course? Choose all that apply.

	Response by Course Level			
	Lower	Upper	Grad	Total
3a. The course fulfills a general education requirement.	51.6%	31.6%	38.2%	40.9%
3b. The course fulfills a requirement in my major.	71.4%	84.6%	83.2%	78.5%
3c. I have enjoyed the professor's class(es) in the past.	6.4%	16.6%	32.6%	12.4%
3d. The course will improve job/career opportunities.	17.9%	25.8%	53.9%	23.0%
3e. The course sounded interesting to me.	19.2%	24.7%	38.2%	22.6%

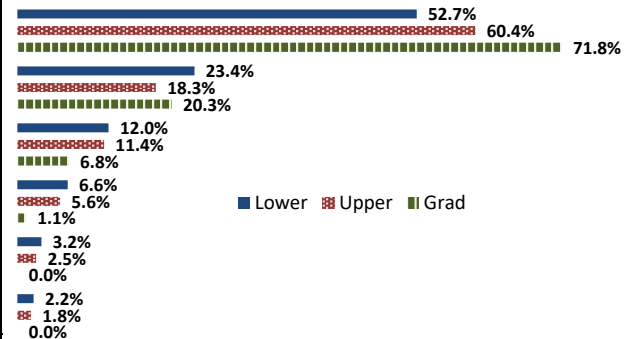
### 4. How would you rate the overall quality of instruction in this course?

	Response by Course Level			
	Lower	Upper	Grad	Total
Excellent (6)	49.7%	55.9%	67.4%	53.4%
Very Good (5)	24.5%	21.1%	23.6%	22.7%
Good (4)	13.3%	12.9%	7.9%	12.9%
Fair (3)	7.4%	6.0%	1.1%	6.5%
Poor (2)	3.1%	2.4%	0.0%	2.6%
Unsatisfactory (1)	2.0%	1.7%	0.0%	1.8%
Mean	5.0	5.2	5.6	5.1
Median	5	6	6	6
Count	2656	2984	178	5818



### 5. How would you rate your professor's specific contribution to you learning in this course?

	Response by Course Level			
	Lower	Upper	Grad	Total
Excellent (6)	52.7%	60.4%	71.8%	57.2%
Very Good (5)	23.4%	18.3%	20.3%	20.6%
Good (4)	12.0%	11.4%	6.8%	11.6%
Fair (3)	6.6%	5.6%	1.1%	6.0%
Poor (2)	3.2%	2.5%	0.0%	2.7%
Unsatisfactory (1)	2.2%	1.8%	0.0%	1.9%
Mean	5.1	5.2	5.6	5.2
Median	5	6	6	6
Count	2651	2980	177	5808



# Student Opinion of Teaching Effectiveness (SOTE)- College of Social and Behavioral Sciences Spring 2022 Term Summary

## 1. Rate your interest in the subject matter of this course before you took the class.

	Response by Course Level			
	Lower	Upper	Grad	Total
Very High (1)	22.5%	36.0%	42.9%	32.2%
High (2)	22.2%	24.2%	19.6%	23.2%
Moderately High (3)	29.9%	23.1%	21.2%	25.2%
Moderately Low (4)	14.8%	10.7%	10.9%	12.1%
Low (5)	6.5%	3.1%	3.2%	4.2%
Very Low (6)	4.0%	2.9%	2.2%	3.2%
Mean	2.7	2.3	2.2	2.4
Median	3	2	2	2
Count	1871	3374	496	5741

## 2. How many class sessions did you attend?

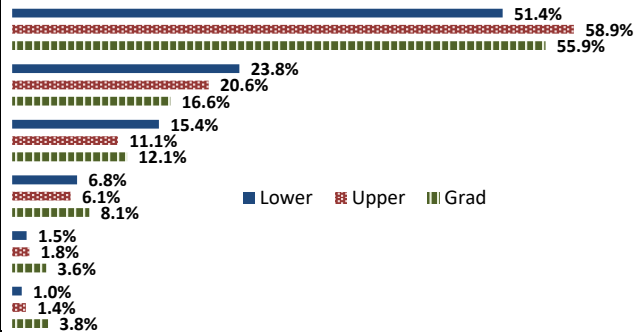
	Response by Course Level			
	Lower	Upper	Grad	Total
All (1)	63.1%	54.6%	74.2%	59.0%
Almost All (2)	27.9%	37.2%	22.9%	33.0%
More than Half (3)	4.9%	5.8%	2.0%	5.2%
Less than Half (4)	4.0%	2.4%	0.9%	2.8%
Mean	1.5	1.6	1.3	1.5
Median	1	1	1	1
Count	1709	3128	458	5295

## 3. Why did you take this course? Choose all that apply.

	Response by Course Level			
	Lower	Upper	Grad	Total
3a. The course fulfills a general education requirement.	71.9%	39.2%	23.5%	48.5%
3b. The course fulfills a requirement in my major.	47.5%	80.2%	91.7%	70.6%
3c. I have enjoyed the professor's class(es) in the past.	3.5%	13.5%	17.0%	10.6%
3d. The course will improve job/career opportunities.	14.0%	25.9%	27.6%	22.2%
3e. The course sounded interesting to me.	29.3%	38.3%	18.3%	33.7%

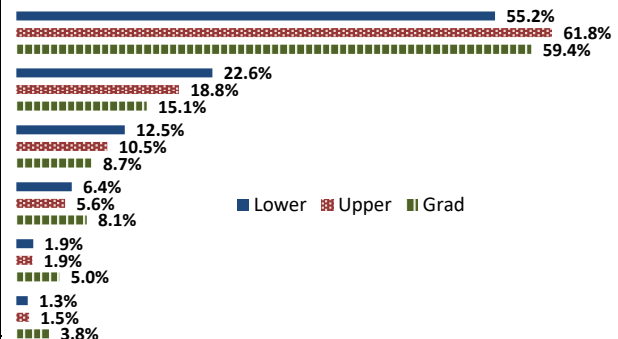
## 4. How would you rate the overall quality of instruction in this course?

	Response by Course Level			
	Lower	Upper	Grad	Total
Excellent (6)	51.4%	58.9%	55.9%	56.2%
Very Good (5)	23.8%	20.6%	16.6%	21.3%
Good (4)	15.4%	11.1%	12.1%	12.6%
Fair (3)	6.8%	6.1%	8.1%	6.5%
Poor (2)	1.5%	1.8%	3.6%	1.9%
Unsatisfactory (1)	1.0%	1.4%	3.8%	1.5%
Mean	5.1	5.2	5.0	5.2
Median	6	6	6	6
Count	1909	3473	506	5888



## 5. How would you rate your professor's specific contribution to you learning in this course?

	Response by Course Level			
	Lower	Upper	Grad	Total
Excellent (6)	55.2%	61.8%	59.4%	59.5%
Very Good (5)	22.6%	18.8%	15.1%	19.7%
Good (4)	12.5%	10.5%	8.7%	11.0%
Fair (3)	6.4%	5.6%	8.1%	6.1%
Poor (2)	1.9%	1.9%	5.0%	2.1%
Unsatisfactory (1)	1.3%	1.5%	3.8%	1.6%
Mean	5.2	5.3	5.0	5.2
Median	6	6	6	6
Count	1910	3468	505	5883



## Student Opinion of Teaching Effectiveness (SOTE)- College of University Studies Spring 2022 Term Summary

### 1. Rate your interest in the subject matter of this course before you took the class.

	Response by Course Level			
	Lower	Upper	Grad	Total
Very High (1)	8.1%	20.9%	0.0%	11.8%
High (2)	15.5%	16.4%	0.0%	15.8%
Moderately High (3)	32.9%	46.3%	0.0%	36.8%
Moderately Low (4)	22.4%	10.5%	0.0%	18.9%
Low (5)	14.3%	1.5%	0.0%	10.5%
Very Low (6)	6.8%	4.5%	0.0%	6.1%
Mean	3.4	2.7	.	3.2
Median	3	3	.	3
Count	161	67	0	228

### 2. How many class sessions did you attend?

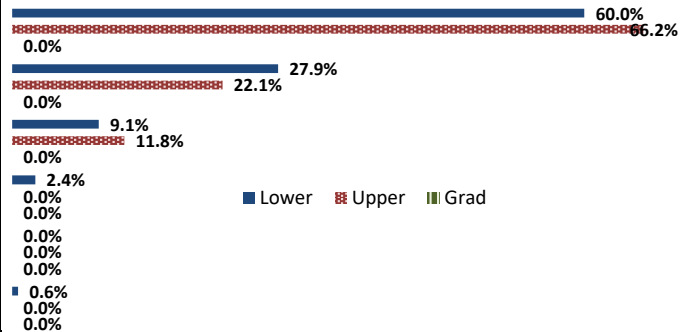
	Response by Course Level			
	Lower	Upper	Grad	Total
All (1)	59.0%	66.7%	0.0%	61.1%
Almost All (2)	39.1%	31.7%	0.0%	37.0%
More than Half (3)	1.3%	0.0%	0.0%	0.9%
Less than Half (4)	0.6%	1.7%	0.0%	0.9%
Mean	1.4	1.4	.	1.4
Median	1	1	.	1
Count	156	60	0	216

### 3. Why did you take this course? Choose all that apply.

	Response by Course Level			
	Lower	Upper	Grad	Total
3a. The course fulfills a general education requirement.	97.0%	72.5%	0.0%	89.7%
3b. The course fulfills a requirement in my major.	24.2%	24.6%	0.0%	24.4%
3c. I have enjoyed the professor's class(es) in the past.	14.6%	11.6%	0.0%	13.7%
3d. The course will improve job/career opportunities.	14.6%	29.0%	0.0%	18.8%
3e. The course sounded interesting to me.	12.1%	21.7%	0.0%	15.0%

### 4. How would you rate the overall quality of instruction in this course?

	Response by Course Level			
	Lower	Upper	Grad	Total
Excellent (6)	60.0%	66.2%	0.0%	61.8%
Very Good (5)	27.9%	22.1%	0.0%	26.2%
Good (4)	9.1%	11.8%	0.0%	9.9%
Fair (3)	2.4%	0.0%	0.0%	1.7%
Poor (2)	0.0%	0.0%	0.0%	0.0%
Unsatisfactory (1)	0.6%	0.0%	0.0%	0.4%
Mean	5.4	5.5	.	5.5
Median	6	6	.	6
Count	165	68	0	233



### 5. How would you rate your professor's specific contribution to you learning in this course?

	Response by Course Level			
	Lower	Upper	Grad	Total
Excellent (6)	61.6%	75.4%	0.0%	65.7%
Very Good (5)	26.8%	17.4%	0.0%	24.0%
Good (4)	9.8%	7.3%	0.0%	9.0%
Fair (3)	1.2%	0.0%	0.0%	0.9%
Poor (2)	0.0%	0.0%	0.0%	0.0%
Unsatisfactory (1)	0.6%	0.0%	0.0%	0.4%
Mean	5.5	5.7	.	5.5
Median	6	6	.	6
Count	164	69	0	233

