

California State University, San Bernardino

CSUSB ScholarWorks

CSUSB Faculty Senate records

Arthur E. Nelson University Archives

2021

Student Opinion of Teaching Effectiveness (SOTE)- College of Arts & Letters Spring 2021 Term Summary (2021)

CSUSB Faculty Senate

Follow this and additional works at: <https://scholarworks.lib.csusb.edu/facultysenate>

Recommended Citation

CSUSB Faculty Senate, "Student Opinion of Teaching Effectiveness (SOTE)- College of Arts & Letters Spring 2021 Term Summary (2021)" (2021). *CSUSB Faculty Senate records*. 362.
<https://scholarworks.lib.csusb.edu/facultysenate/362>

This Report is brought to you for free and open access by the Arthur E. Nelson University Archives at CSUSB ScholarWorks. It has been accepted for inclusion in CSUSB Faculty Senate records by an authorized administrator of CSUSB ScholarWorks. For more information, please contact scholarworks@csusb.edu.

Student Opinion of Teaching Effectiveness (SOTE)- College of Arts & Letters Spring 2021 Term Summary

1. Rate your interest in the subject matter of this course before you took the class.

| | Response by Course Level | | | |
|---------------------|--------------------------|-------|-------|-------|
| | Lower | Upper | Grad | Total |
| Very High (1) | 26.7% | 33.4% | 50.9% | 30.5% |
| High (2) | 22.8% | 23.6% | 23.1% | 23.2% |
| Moderately High (3) | 31.0% | 24.8% | 17.2% | 27.7% |
| Moderately Low (4) | 12.7% | 12.4% | 5.9% | 12.4% |
| Low (5) | 4.3% | 3.5% | 2.4% | 3.9% |
| Very Low (6) | 2.6% | 2.3% | 0.6% | 2.4% |
| Mean | 2.5 | 2.4 | 1.9 | 2.4 |
| Median | 3 | 2 | 1 | 2 |
| Count | 3508 | 3354 | 169 | 7031 |

2. How many class sessions did you attend?

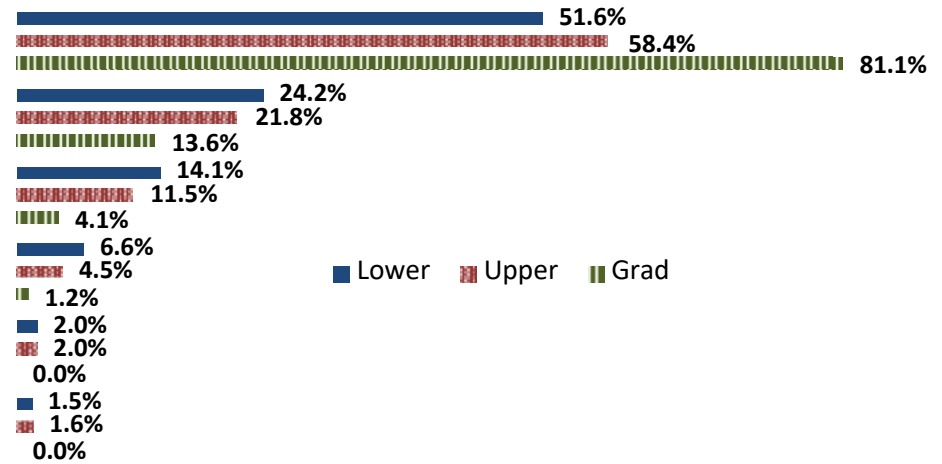
| | Response by Course Level | | | |
|--------------------|--------------------------|-------|-------|-------|
| | Lower | Upper | Grad | Total |
| All (1) | 60.2% | 64.6% | 68.9% | 62.5% |
| Almost All (2) | 31.1% | 29.2% | 28.1% | 30.1% |
| More than Half (3) | 4.3% | 3.2% | 1.8% | 3.7% |
| Less than Half (4) | 4.5% | 3.0% | 1.2% | 3.7% |
| Mean | 1.5 | 1.4 | 1.4 | 1.5 |
| Median | 1 | 1 | 1 | 1 |
| Count | 3226 | 3098 | 164 | 6488 |

3. Why did you take this course? Choose all that apply.

| | Response by Course Level | | | |
|---|--------------------------|-------|-------|-------|
| | Lower | Upper | Grad | Total |
| 3a. The course fulfills a general education requirement. | 69.9% | 50.7% | 26.0% | 59.7% |
| 3b. The course fulfills a requirement in my major. | 42.7% | 66.2% | 90.5% | 55.0% |
| 3c. I have enjoyed the professor's class(es) in the past. | 8.8% | 14.9% | 23.7% | 12.0% |
| 3d. The course will improve job/career opportunities. | 16.5% | 20.6% | 24.3% | 18.6% |
| 3e. The course sounded interesting to me. | 33.1% | 36.4% | 37.3% | 34.7% |

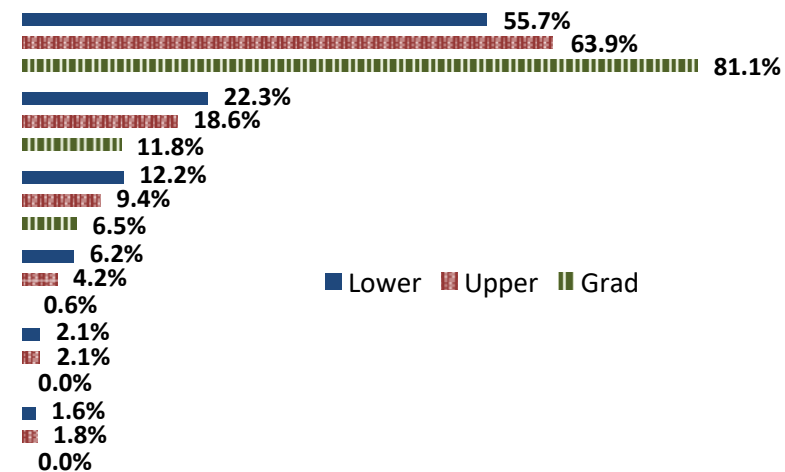
4. How would you rate the overall quality of instruction in this course?

| | Response by Course Level | | | |
|--------------------|--------------------------|-------|-------|-------|
| | Lower | Upper | Grad | Total |
| Excellent (6) | 51.6% | 58.4% | 81.1% | 55.6% |
| Very Good (5) | 24.2% | 21.8% | 13.6% | 22.8% |
| Good (4) | 14.1% | 11.5% | 4.1% | 12.6% |
| Fair (3) | 6.6% | 4.5% | 1.2% | 5.5% |
| Poor (2) | 2.0% | 2.0% | 0.0% | 2.0% |
| Unsatisfactory (1) | 1.5% | 1.6% | 0.0% | 1.5% |
| Mean | 5.1 | 5.3 | 5.7 | 5.2 |
| Median | 6 | 6 | 6 | 6 |
| Count | 3566 | 3412 | 169 | 7147 |



5. How would you rate your professor's specific contribution to your learning in this course?

| | Response by Course Level | | | |
|--------------------|--------------------------|-------|-------|-------|
| | Lower | Upper | Grad | Total |
| Excellent (6) | 55.7% | 63.9% | 81.1% | 60.2% |
| Very Good (5) | 22.3% | 18.6% | 11.8% | 20.3% |
| Good (4) | 12.2% | 9.4% | 6.5% | 10.7% |
| Fair (3) | 6.2% | 4.2% | 0.6% | 5.1% |
| Poor (2) | 2.1% | 2.1% | 0.0% | 2.0% |
| Unsatisfactory (1) | 1.6% | 1.8% | 0.0% | 1.7% |
| Mean | 5.2 | 5.3 | 5.7 | 5.3 |
| Median | 6 | 6 | 6 | 6 |
| Count | 3565 | 3412 | 169 | 7146 |



Student Opinion of Teaching Effectiveness (SOTE)- College of Business and Public Administration Spring 2021 Term Summary

1. Rate your interest in the subject matter of this course before you took the class.

| | Response by Course Level | | | |
|---------------------|--------------------------|-------|-------|-------|
| | Lower | Upper | Grad | Total |
| Very High (1) | 23.8% | 31.1% | 33.7% | 30.5% |
| High (2) | 20.8% | 26.2% | 23.9% | 25.2% |
| Moderately High (3) | 32.6% | 26.8% | 24.7% | 27.3% |
| Moderately Low (4) | 15.9% | 10.7% | 11.5% | 11.4% |
| Low (5) | 4.6% | 3.3% | 3.8% | 3.5% |
| Very Low (6) | 2.4% | 2.0% | 2.5% | 2.1% |
| Mean | 2.6 | 2.3 | 2.4 | 2.4 |
| Median | 3 | 2 | 2 | 2 |
| Count | 635 | 3693 | 611 | 4939 |

2. How many class sessions did you attend?

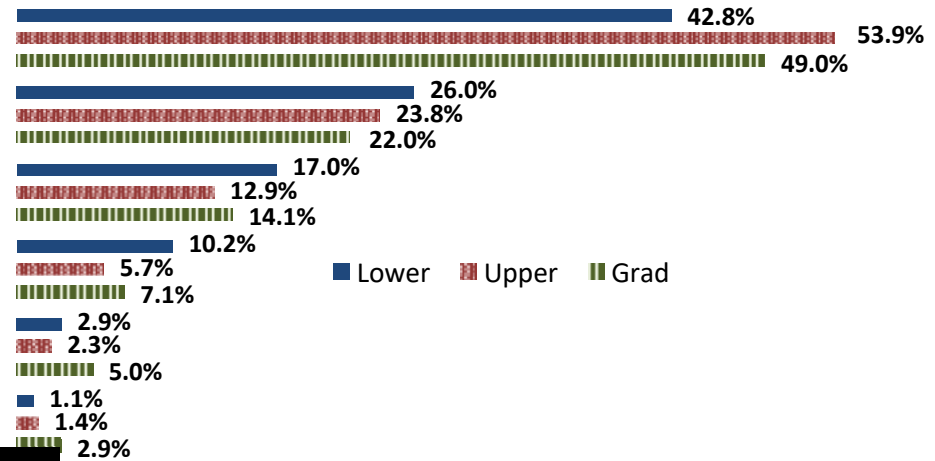
| | Response by Course Level | | | |
|--------------------|--------------------------|-------|-------|-------|
| | Lower | Upper | Grad | Total |
| All (1) | 58.3% | 68.3% | 85.2% | 69.2% |
| Almost All (2) | 26.3% | 23.9% | 12.1% | 22.7% |
| More than Half (3) | 8.1% | 4.0% | 1.2% | 4.2% |
| Less than Half (4) | 7.4% | 3.8% | 1.6% | 4.0% |
| Mean | 1.6 | 1.4 | 1.2 | 1.4 |
| Median | 1 | 1 | 1 | 1 |
| Count | 570 | 3345 | 581 | 4496 |

3. Why did you take this course? Choose all that apply.

| | Response by Course Level | | | |
|---|--------------------------|-------|-------|-------|
| | Lower | Upper | Grad | Total |
| 3a. The course fulfills a general education requirement. | 48.5% | 37.0% | 31.0% | 37.8% |
| 3b. The course fulfills a requirement in my major. | 74.3% | 86.6% | 86.8% | 85.1% |
| 3c. I have enjoyed the professor's class(es) in the past. | 2.5% | 9.5% | 9.8% | 8.6% |
| 3d. The course will improve job/career opportunities. | 24.6% | 30.4% | 31.1% | 29.7% |
| 3e. The course sounded interesting to me. | 24.2% | 22.8% | 20.1% | 22.6% |

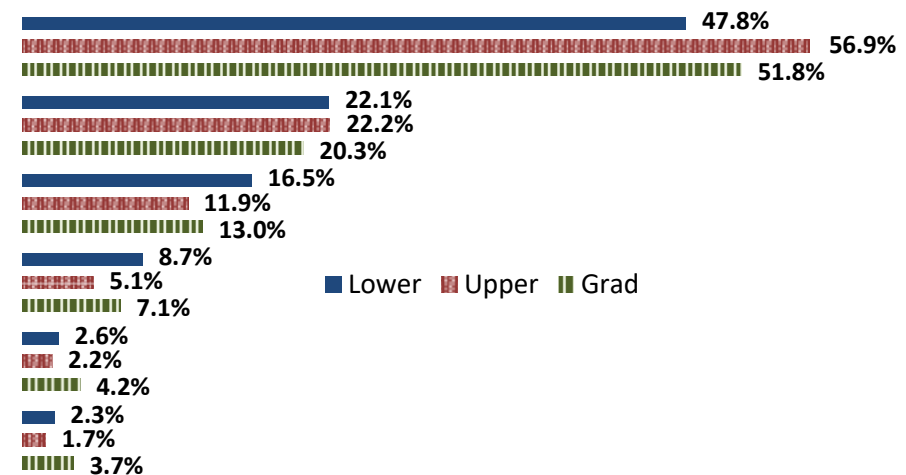
4. How would you rate the overall quality of instruction in this course?

| | Response by Course Level | | | |
|--------------------|--------------------------|-------|-------|-------|
| | Lower | Upper | Grad | Total |
| Excellent (6) | 42.8% | 53.9% | 49.0% | 51.9% |
| Very Good (5) | 20.0% | 20.0% | 22.0% | 20.0% |
| Good (4) | 11.0% | 12.0% | 17.1% | 13.0% |
| Fair (3) | 10.2% | 5.1% | 11.1% | 8.0% |
| Poor (2) | 2.9% | 2.0% | 3.0% | 2.1% |
| Unsatisfactory (1) | 1.1% | 1.4% | 2.9% | 1.6% |
| Mean | 4.9 | 5.2 | 4.9 | 5.1 |
| Median | 5 | 6 | 5 | 6 |
| Count | 647 | 3747 | 623 | 5017 |



5. How would you rate your professor's specific contribution to your learning in this course?

| | Response by Course Level | | | |
|--------------------|--------------------------|-------|-------|-------|
| | Lower | Upper | Grad | Total |
| Excellent (6) | 47.8% | 56.9% | 51.8% | 55.1% |
| Very Good (5) | 22.1% | 22.2% | 20.3% | 22.0% |
| Good (4) | 16.5% | 11.9% | 13.0% | 12.7% |
| Fair (3) | 8.7% | 5.1% | 7.1% | 5.8% |
| Poor (2) | 2.6% | 2.2% | 4.2% | 2.5% |
| Unsatisfactory (1) | 2.3% | 1.7% | 3.7% | 2.0% |
| Mean | 5.0 | 5.2 | 5.0 | 5.2 |
| Median | 5 | 6 | 6 | 6 |
| Count | 647 | 3748 | 622 | 5017 |



Student Opinion of Teaching Effectiveness (SOTE)- College of Education Spring 2021 Term Summary

1. Rate your interest in the subject matter of this course before you took the class.

| | Response by Course Level | | | |
|---------------------|--------------------------|-------|-------|-------|
| | Lower | Upper | Grad | Total |
| Very High (1) | 49.0% | 40.6% | 49.1% | 46.4% |
| High (2) | 25.5% | 28.4% | 26.3% | 26.9% |
| Moderately High (3) | 25.5% | 21.6% | 17.0% | 18.6% |
| Moderately Low (4) | 0.0% | 6.5% | 5.0% | 5.4% |
| Low (5) | 0.0% | 2.1% | 1.7% | 1.8% |
| Very Low (6) | 0.0% | 0.8% | 1.0% | 0.9% |
| Mean | 1.8 | 2.0 | 1.9 | 1.9 |
| Median | 2 | 2 | 2 | 2 |
| Count | 51 | 751 | 1550 | 2352 |

2. How many class sessions did you attend?

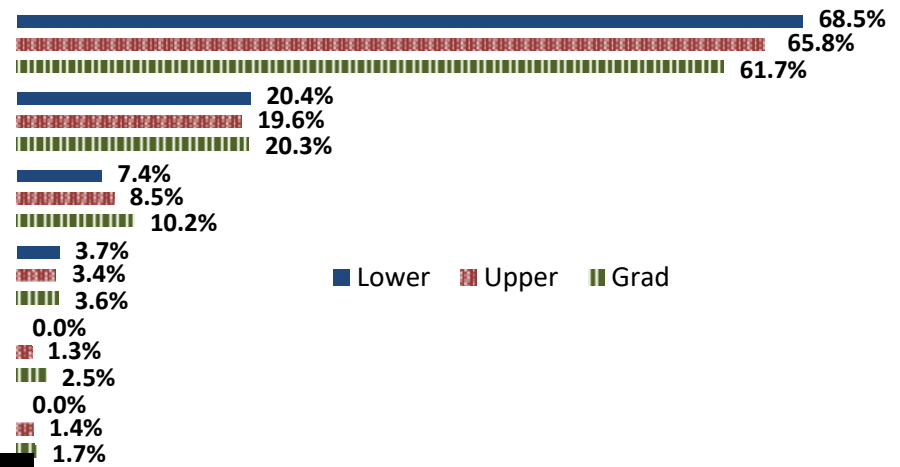
| | Response by Course Level | | | |
|--------------------|--------------------------|-------|-------|-------|
| | Lower | Upper | Grad | Total |
| All (1) | 73.3% | 80.3% | 86.1% | 84.0% |
| Almost All (2) | 26.7% | 17.9% | 12.5% | 14.6% |
| More than Half (3) | 0.0% | 1.0% | 0.8% | 0.8% |
| Less than Half (4) | 0.0% | 0.9% | 0.6% | 0.6% |
| Mean | 1.3 | 1.2 | 1.2 | 1.2 |
| Median | 1 | 1 | 1 | 1 |
| Count | 45 | 704 | 1427 | 2176 |

3. Why did you take this course? Choose all that apply.

| | Response by Course Level | | | |
|---|--------------------------|-------|-------|-------|
| | Lower | Upper | Grad | Total |
| 3a. The course fulfills a general education requirement. | 57.4% | 32.3% | 23.4% | 27.0% |
| 3b. The course fulfills a requirement in my major. | 68.5% | 84.1% | 86.1% | 85.1% |
| 3c. I have enjoyed the professor's class(es) in the past. | 1.9% | 5.9% | 18.2% | 13.9% |
| 3d. The course will improve job/career opportunities. | 18.5% | 35.4% | 40.5% | 38.4% |
| 3e. The course sounded interesting to me. | 31.5% | 13.5% | 17.1% | 16.2% |

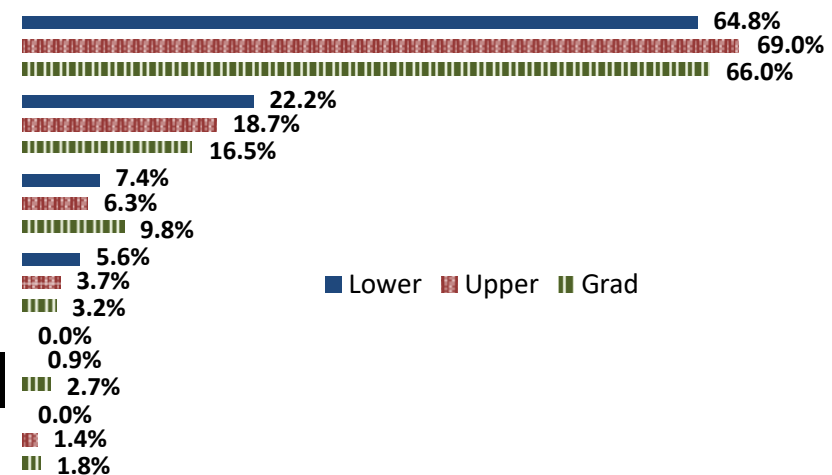
4. How would you rate the overall quality of instruction in this course?

| | Response by Course Level | | | |
|--------------------|--------------------------|-------|-------|-------|
| | Lower | Upper | Grad | Total |
| Excellent (6) | 68.5% | 65.8% | 61.7% | 63.1% |
| Very Good (5) | 20.4% | 19.6% | 20.3% | 20.0% |
| Good (4) | 7.4% | 8.5% | 10.2% | 8.5% |
| Fair (3) | 3.7% | 3.4% | 3.6% | 3.6% |
| Poor (2) | 0.0% | 1.3% | 2.5% | 1.3% |
| Unsatisfactory (1) | 0.0% | 1.4% | 1.7% | 1.6% |
| Mean | 5.5 | 5.4 | 5.3 | 5.3 |
| Median | 6 | 6 | 6 | 6 |
| Count | 54 | 766 | 1575 | 2395 |



5. How would you rate your professor's specific contribution to your learning in this course?

| | Response by Course Level | | | |
|--------------------|--------------------------|-------|-------|-------|
| | Lower | Upper | Grad | Total |
| Excellent (6) | 64.8% | 69.0% | 66.0% | 66.9% |
| Very Good (5) | 22.2% | 18.7% | 16.5% | 17.3% |
| Good (4) | 7.4% | 6.3% | 9.8% | 8.6% |
| Fair (3) | 5.6% | 3.7% | 3.2% | 3.4% |
| Poor (2) | 0.0% | 0.9% | 2.7% | 2.1% |
| Unsatisfactory (1) | 0.0% | 1.4% | 1.8% | 1.6% |
| Mean | 5.5 | 5.5 | 5.3 | 5.4 |
| Median | 6 | 6 | 6 | 6 |
| Count | 54 | 764 | 1574 | 2392 |



Student Opinion of Teaching Effectiveness (SOTE)- College of Natural Sciences Spring 2021 Term Summary

1. Rate your interest in the subject matter of this course before you took the class.

| | Response by Course Level | | | |
|---------------------|--------------------------|-------|-------|-------|
| | Lower | Upper | Grad | Total |
| Very High (1) | 22.7% | 32.8% | 47.4% | 27.6% |
| High (2) | 23.4% | 26.7% | 26.0% | 24.9% |
| Moderately High (3) | 29.0% | 25.9% | 19.5% | 27.5% |
| Moderately Low (4) | 16.2% | 9.4% | 5.2% | 13.0% |
| Low (5) | 5.2% | 3.3% | 2.0% | 4.3% |
| Very Low (6) | 3.6% | 1.9% | 0.0% | 2.8% |
| Mean | 2.7 | 2.3 | 1.9 | 2.5 |
| Median | 3 | 2 | 2 | 2 |
| Count | 5302 | 4432 | 154 | 9888 |

2. How many class sessions did you attend?

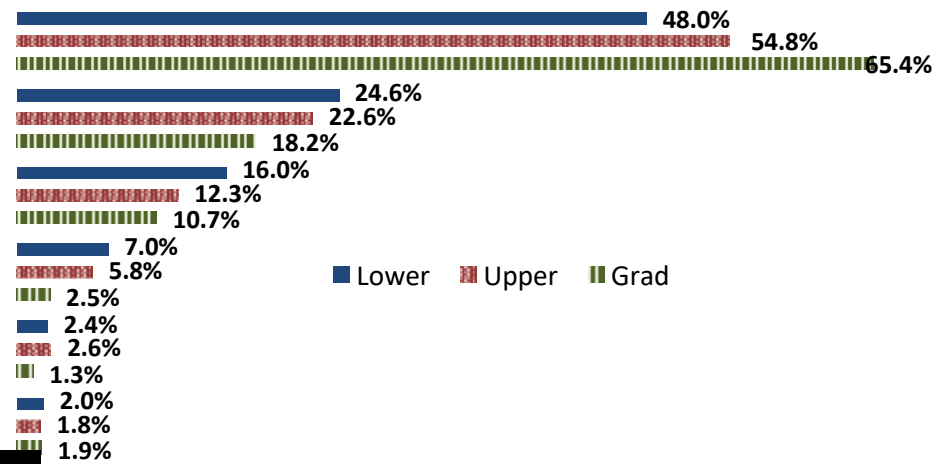
| | Response by Course Level | | | |
|--------------------|--------------------------|-------|-------|-------|
| | Lower | Upper | Grad | Total |
| All (1) | 62.8% | 71.2% | 88.6% | 67.0% |
| Almost All (2) | 27.7% | 22.9% | 10.7% | 25.3% |
| More than Half (3) | 5.4% | 3.8% | 0.7% | 4.6% |
| Less than Half (4) | 4.1% | 2.2% | 0.0% | 3.2% |
| Mean | 1.5 | 1.4 | 1.1 | 1.4 |
| Median | 1 | 1 | 1 | 1 |
| Count | 4799 | 4007 | 149 | 8955 |

3. Why did you take this course? Choose all that apply.

| | Response by Course Level | | | |
|---|--------------------------|-------|-------|-------|
| | Lower | Upper | Grad | Total |
| 3a. The course fulfills a general education requirement. | 58.7% | 33.7% | 31.5% | 47.0% |
| 3b. The course fulfills a requirement in my major. | 66.2% | 82.2% | 91.2% | 73.8% |
| 3c. I have enjoyed the professor's class(es) in the past. | 6.6% | 13.4% | 25.2% | 10.0% |
| 3d. The course will improve job/career opportunities. | 16.7% | 22.2% | 37.7% | 19.5% |
| 3e. The course sounded interesting to me. | 16.6% | 22.5% | 27.0% | 19.4% |

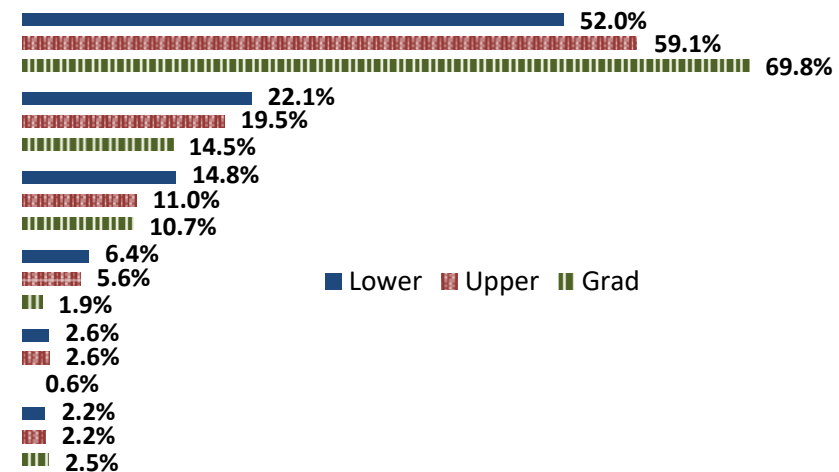
4. How would you rate the overall quality of instruction in this course?

| | Response by Course Level | | | |
|--------------------|--------------------------|-------|-------|-------|
| | Lower | Upper | Grad | Total |
| Excellent (6) | 48.0% | 54.8% | 65.4% | 51.4% |
| Very Good (5) | 24.6% | 22.6% | 22.6% | 23.0% |
| Good (4) | 16.0% | 12.3% | 10.7% | 17.0% |
| Fair (3) | 7.0% | 5.8% | 2.5% | 5.7% |
| Poor (2) | 2.4% | 2.6% | 1.3% | 2.0% |
| Unsatisfactory (1) | 2.0% | 1.8% | 1.9% | 1.9% |
| Mean | 5.0 | 5.2 | 5.4 | 5.1 |
| Median | 5 | 6 | 6 | 6 |
| Count | 5393 | 4515 | 159 | 10067 |



5. How would you rate your professor's specific contribution to your learning in this course?

| | Response by Course Level | | | |
|--------------------|--------------------------|-------|-------|-------|
| | Lower | Upper | Grad | Total |
| Excellent (6) | 52.0% | 59.1% | 69.8% | 55.5% |
| Very Good (5) | 22.1% | 19.5% | 14.5% | 20.8% |
| Good (4) | 14.8% | 11.0% | 10.7% | 13.0% |
| Fair (3) | 6.4% | 5.6% | 1.9% | 6.0% |
| Poor (2) | 2.6% | 2.6% | 0.6% | 2.5% |
| Unsatisfactory (1) | 2.2% | 2.2% | 2.5% | 2.2% |
| Mean | 5.1 | 5.2 | 5.4 | 5.1 |
| Median | 5 | 6 | 6 | 6 |
| Count | 5389 | 4518 | 159 | 10066 |



Student Opinion of Teaching Effectiveness (SOTE)- College of Social and Behavioral Sciences Spring 2021 Term Summary

1. Rate your interest in the subject matter of this course before you took the class.

| | Response by Course Level | | | |
|---------------------|--------------------------|-------|-------|-------|
| | Lower | Upper | Grad | Total |
| Very High (1) | 23.1% | 35.8% | 39.1% | 32.1% |
| High (2) | 23.0% | 25.6% | 29.5% | 25.1% |
| Moderately High (3) | 29.2% | 23.5% | 19.6% | 24.9% |
| Moderately Low (4) | 15.9% | 9.6% | 7.8% | 11.4% |
| Low (5) | 5.0% | 3.2% | 3.2% | 3.8% |
| Very Low (6) | 3.9% | 2.3% | 0.9% | 2.7% |
| Mean | 2.7 | 2.3 | 2.1 | 2.4 |
| Median | 3 | 2 | 2 | 2 |
| Count | 2483 | 4553 | 757 | 7793 |

2. How many class sessions did you attend?

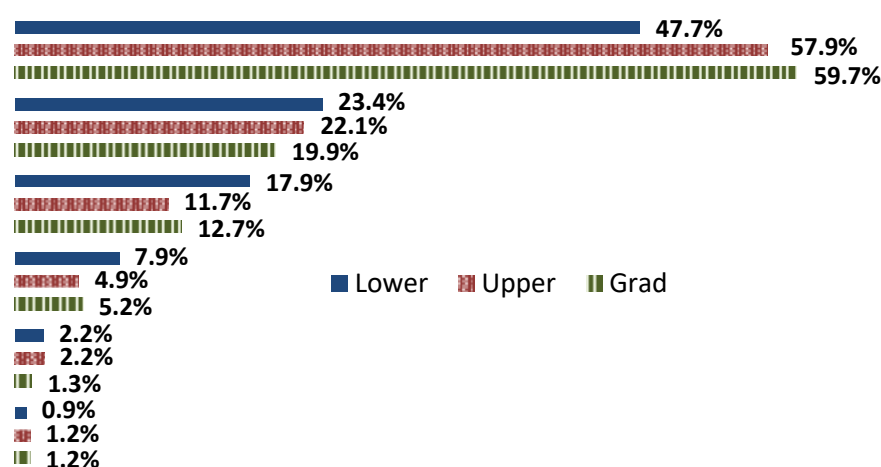
| | Response by Course Level | | | |
|--------------------|--------------------------|-------|-------|-------|
| | Lower | Upper | Grad | Total |
| All (1) | 68.0% | 69.3% | 80.4% | 70.1% |
| Almost All (2) | 20.4% | 23.0% | 18.2% | 21.7% |
| More than Half (3) | 5.2% | 4.0% | 1.1% | 4.1% |
| Less than Half (4) | 6.3% | 3.7% | 0.3% | 4.2% |
| Mean | 1.5 | 1.4 | 1.2 | 1.4 |
| Median | 1 | 1 | 1 | 1 |
| Count | 2194 | 4116 | 715 | 7025 |

3. Why did you take this course? Choose all that apply.

| | Response by Course Level | | | |
|---|--------------------------|-------|-------|-------|
| | Lower | Upper | Grad | Total |
| 3a. The course fulfills a general education requirement. | 69.2% | 41.7% | 24.8% | 48.9% |
| 3b. The course fulfills a requirement in my major. | 48.7% | 75.2% | 91.4% | 68.3% |
| 3c. I have enjoyed the professor's class(es) in the past. | 3.7% | 13.6% | 21.2% | 11.2% |
| 3d. The course will improve job/career opportunities. | 15.6% | 21.2% | 30.4% | 20.3% |
| 3e. The course sounded interesting to me. | 26.2% | 36.1% | 19.6% | 31.4% |

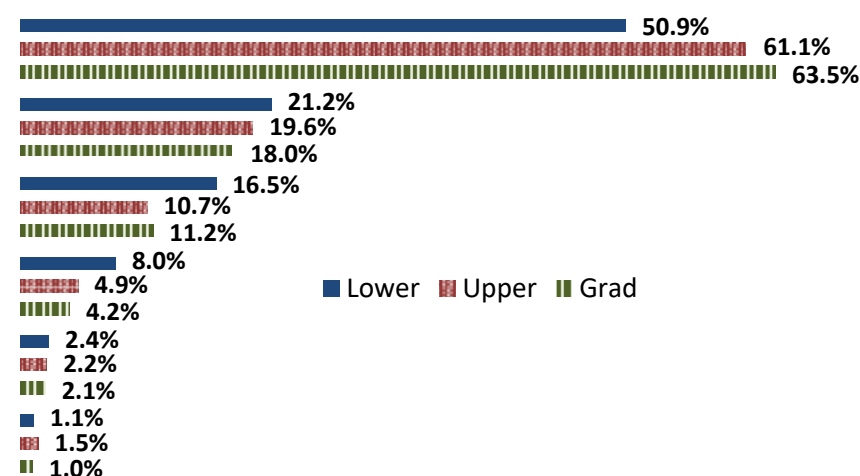
4. How would you rate the overall quality of instruction in this course?

| | Response by Course Level | | | |
|--------------------|--------------------------|-------|-------|-------|
| | Lower | Upper | Grad | Total |
| Excellent (6) | 47.7% | 57.9% | 59.7% | 54.8% |
| Very Good (5) | 23.4% | 22.1% | 19.9% | 22.3% |
| Good (4) | 17.9% | 11.7% | 12.7% | 13.8% |
| Fair (3) | 7.9% | 4.9% | 5.2% | 5.9% |
| Poor (2) | 2.2% | 2.2% | 1.3% | 2.1% |
| Unsatisfactory (1) | 0.9% | 1.2% | 1.2% | 1.1% |
| Mean | 5.0 | 5.3 | 5.3 | 5.2 |
| Median | 5 | 6 | 6 | 6 |
| Count | 2530 | 4642 | 769 | 7941 |



5. How would you rate your professor's specific contribution to your learning in this course?

| | Response by Course Level | | | |
|--------------------|--------------------------|-------|-------|-------|
| | Lower | Upper | Grad | Total |
| Excellent (6) | 50.9% | 61.1% | 63.5% | 58.1% |
| Very Good (5) | 21.2% | 19.6% | 18.0% | 19.9% |
| Good (4) | 16.5% | 10.7% | 11.2% | 12.6% |
| Fair (3) | 8.0% | 4.9% | 4.2% | 5.8% |
| Poor (2) | 2.4% | 2.2% | 2.1% | 2.3% |
| Unsatisfactory (1) | 1.1% | 1.5% | 1.0% | 1.3% |
| Mean | 5.1 | 5.3 | 5.3 | 5.2 |
| Median | 5 | 6 | 6 | 6 |
| Count | 2525 | 4634 | 767 | 7926 |



Student Opinion of Teaching Effectiveness (SOTE)- College of University Studies Spring 2021 Term Summary

1. Rate your interest in the subject matter of this course before you took the class.

| | Response by Course Level | | | |
|---------------------|--------------------------|-------|------|-------|
| | Lower | Upper | Grad | Total |
| Very High (1) | 17.1% | 25.0% | 0.0% | 17.8% |
| High (2) | 10.3% | 41.7% | 0.0% | 13.2% |
| Moderately High (3) | 37.6% | 16.7% | 0.0% | 35.7% |
| Moderately Low (4) | 14.5% | 8.3% | 0.0% | 14.0% |
| Low (5) | 14.5% | 0.0% | 0.0% | 13.2% |
| Very Low (6) | 6.0% | 8.3% | 0.0% | 6.2% |
| Mean | 3.2 | 2.4 | . | 3.1 |
| Median | 3 | 2 | . | 3 |
| Count | 117 | 12 | 0 | 129 |

2. How many class sessions did you attend?

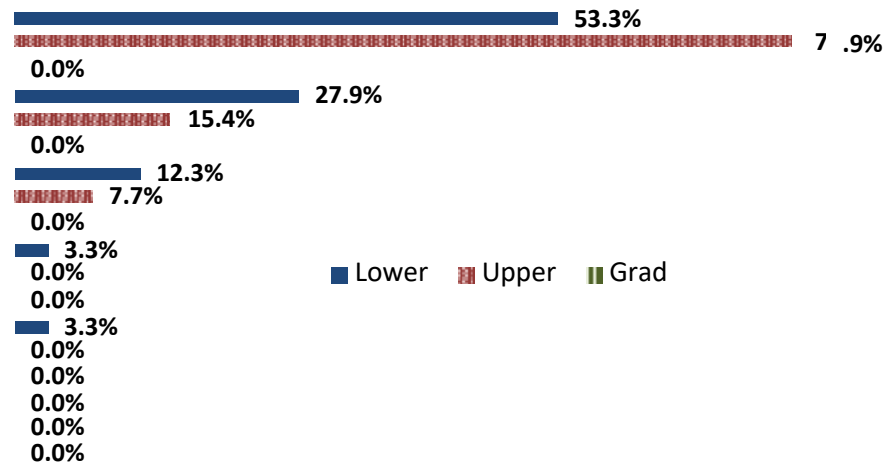
| | Response by Course Level | | | |
|--------------------|--------------------------|-------|------|-------|
| | Lower | Upper | Grad | Total |
| All (1) | 76.6% | 90.0% | 0.0% | 77.8% |
| Almost All (2) | 15.0% | 10.0% | 0.0% | 14.5% |
| More than Half (3) | 3.7% | 0.0% | 0.0% | 3.4% |
| Less than Half (4) | 4.7% | 0.0% | 0.0% | 4.3% |
| Mean | 1.4 | 1.1 | . | 1.3 |
| Median | 1 | 1 | . | 1 |
| Count | 107 | 10 | 0 | 117 |

3. Why did you take this course? Choose all that apply.

| | Response by Course Level | | | |
|---|--------------------------|-------|------|-------|
| | Lower | Upper | Grad | Total |
| 3a. The course fulfills a general education requirement. | 88.5% | 38.5% | 0.0% | 83.7% |
| 3b. The course fulfills a requirement in my major. | 21.3% | 23.1% | 0.0% | 21.5% |
| 3c. I have enjoyed the professor's class(es) in the past. | 9.8% | 53.9% | 0.0% | 14.1% |
| 3d. The course will improve job/career opportunities. | 12.3% | 38.5% | 0.0% | 14.8% |
| 3e. The course sounded interesting to me. | 23.8% | 7.7% | 0.0% | 22.2% |

4. How would you rate the overall quality of instruction in this course?

| | Response by Course Level | | | |
|--------------------|--------------------------|-------|------|-------|
| | Lower | Upper | Grad | Total |
| Excellent (6) | 53.3% | 76.9% | 0.0% | 55.6% |
| Very Good (5) | 27.9% | 15.4% | 0.0% | 26.7% |
| Good (4) | 12.3% | 7.7% | 0.0% | 11.9% |
| Fair (3) | 3.3% | 0.0% | 0.0% | 3.0% |
| Poor (2) | 3.3% | 0.0% | 0.0% | 3.0% |
| Unsatisfactory (1) | 0.0% | 0.0% | 0.0% | 0.0% |
| Mean | 5.2 | 5.7 | . | 5.3 |
| Median | 6 | 6 | . | 6 |
| Count | 122 | 13 | 0 | 135 |



5. How would you rate your professor's specific contribution to your learning in this course?

| | Response by Course Level | | | |
|--------------------|--------------------------|-------|------|-------|
| | Lower | Upper | Grad | Total |
| Excellent (6) | 54.1% | 92.3% | 0.0% | 57.8% |
| Very Good (5) | 21.3% | 7.7% | 0.0% | 20.0% |
| Good (4) | 15.6% | 0.0% | 0.0% | 14.1% |
| Fair (3) | 8.2% | 0.0% | 0.0% | 7.4% |
| Poor (2) | 0.8% | 0.0% | 0.0% | 0.7% |
| Unsatisfactory (1) | 0.0% | 0.0% | 0.0% | 0.0% |
| Mean | 5.2 | 5.9 | . | 5.3 |
| Median | 6 | 6 | . | 6 |
| Count | 122 | 13 | 0 | 135 |

