

California State University, San Bernardino

CSUSB ScholarWorks

CSUSB Faculty Senate records

Arthur E. Nelson University Archives

2021

Student Opinion of Teaching Effectiveness (SOTE)- College of Arts & Letters Fall 2021 Term Summary (2021)

CSUSB Faculty Senate

Follow this and additional works at: <https://scholarworks.lib.csusb.edu/facultysenate>

Recommended Citation

CSUSB Faculty Senate, "Student Opinion of Teaching Effectiveness (SOTE)- College of Arts & Letters Fall 2021 Term Summary (2021)" (2021). *CSUSB Faculty Senate records*. 361.
<https://scholarworks.lib.csusb.edu/facultysenate/361>

This Report is brought to you for free and open access by the Arthur E. Nelson University Archives at CSUSB ScholarWorks. It has been accepted for inclusion in CSUSB Faculty Senate records by an authorized administrator of CSUSB ScholarWorks. For more information, please contact scholarworks@csusb.edu.

Student Opinion of Teaching Effectiveness (SOTE)- College of Arts & Letters Fall 2021 Term Summary

1. Rate your interest in the subject matter of this course before you took the class.

	Response by Course Level			
	Lower	Upper	Grad	Total
Very High (1)	25.3%	33.2%	47.1%	29.5%
High (2)	22.1%	24.3%	22.8%	23.2%
Moderately High (3)	28.5%	23.5%	17.5%	25.9%
Moderately Low (4)	15.3%	12.3%	7.4%	13.7%
Low (5)	5.3%	3.7%	3.2%	4.5%
Very Low (6)	3.5%	3.0%	2.1%	3.2%
Mean	2.6	2.4	2.0	2.5
Median	3	2	2	2
Count	4034	3762	189	7985

2. How many class sessions did you attend?

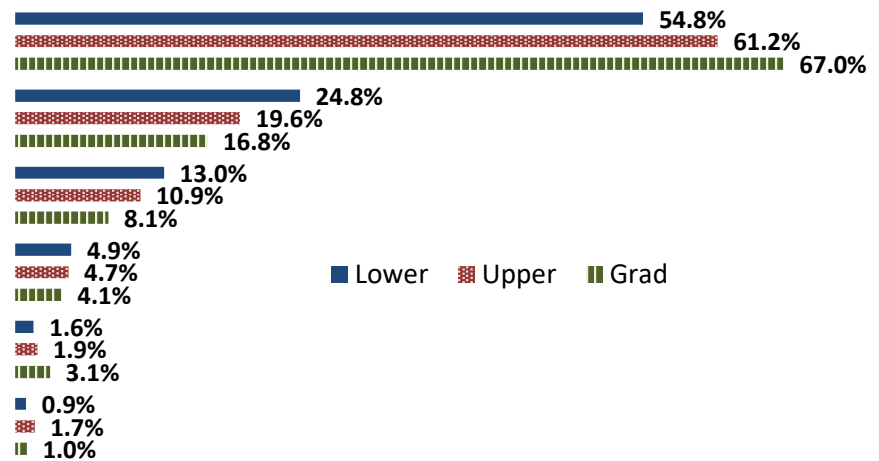
	Response by Course Level			
	Lower	Upper	Grad	Total
All (1)	51.6%	52.1%	57.1%	52.0%
Almost All (2)	40.1%	39.4%	38.5%	39.7%
More than Half (3)	5.7%	6.4%	3.9%	6.0%
Less than Half (4)	2.7%	2.1%	0.6%	2.4%
Mean	1.6	1.6	1.5	1.6
Median	1	1	1	1
Count	3737	3478	182	7397

3. Why did you take this course? Choose all that apply.

	Response by Course Level			
	Lower	Upper	Grad	Total
3a. The course fulfills a general education requirement.	72.7%	54.7%	34.9%	63.3%
3b. The course fulfills a requirement in my major.	40.9%	64.6%	85.9%	53.1%
3c. I have enjoyed the professor's class(es) in the past.	4.9%	11.9%	26.8%	8.7%
3d. The course will improve job/career opportunities.	18.6%	20.7%	27.8%	19.8%
3e. The course sounded interesting to me.	32.8%	37.9%	30.8%	35.1%

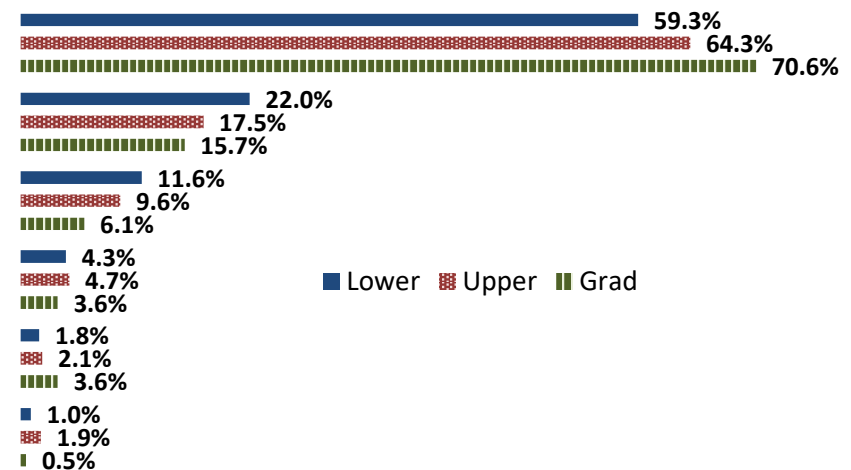
4. How would you rate the overall quality of instruction in this course?

	Response by Course Level			
	Lower	Upper	Grad	Total
Excellent (6)	54.8%	61.2%	67.0%	58.1%
Very Good (5)	24.8%	19.6%	16.8%	22.2%
Good (4)	13.0%	10.9%	8.1%	11.9%
Fair (3)	4.9%	4.7%	4.1%	4.8%
Poor (2)	1.6%	1.9%	3.1%	1.8%
Unsatisfactory (1)	0.9%	1.7%	1.0%	1.3%
Mean	5.2	5.3	5.4	5.3
Median	6	6	6	6
Count	4153	3849	197	8199



5. How would you rate your professor's specific contribution to your learning in this course?

	Response by Course Level			
	Lower	Upper	Grad	Total
Excellent (6)	59.3%	64.3%	70.6%	61.9%
Very Good (5)	22.0%	17.5%	15.7%	19.8%
Good (4)	11.6%	9.6%	6.1%	10.5%
Fair (3)	4.3%	4.7%	3.6%	4.5%
Poor (2)	1.8%	2.1%	3.6%	2.0%
Unsatisfactory (1)	1.0%	1.9%	0.5%	1.4%
Mean	5.3	5.3	5.4	5.3
Median	6	6	6	6
Count	4143	3843	197	8183



Student Opinion of Teaching Effectiveness (SOTE)- College of Business and Public Administration Fall 2021 Term Summary

1. Rate your interest in the subject matter of this course before you took the class.

	Response by Course Level			
	Lower	Upper	Grad	Total
Very High (1)	23.2%	29.1%	34.8%	28.7%
High (2)	23.8%	27.1%	28.6%	26.7%
Moderately High (3)	29.3%	24.7%	22.0%	25.2%
Moderately Low (4)	15.8%	13.1%	9.3%	13.1%
Low (5)	5.4%	3.4%	3.3%	3.8%
Very Low (6)	2.5%	2.7%	2.0%	2.6%
Mean	2.6	2.4	2.2	2.4
Median	3	2	2	2
Count	908	3207	636	4751

2. How many class sessions did you attend?

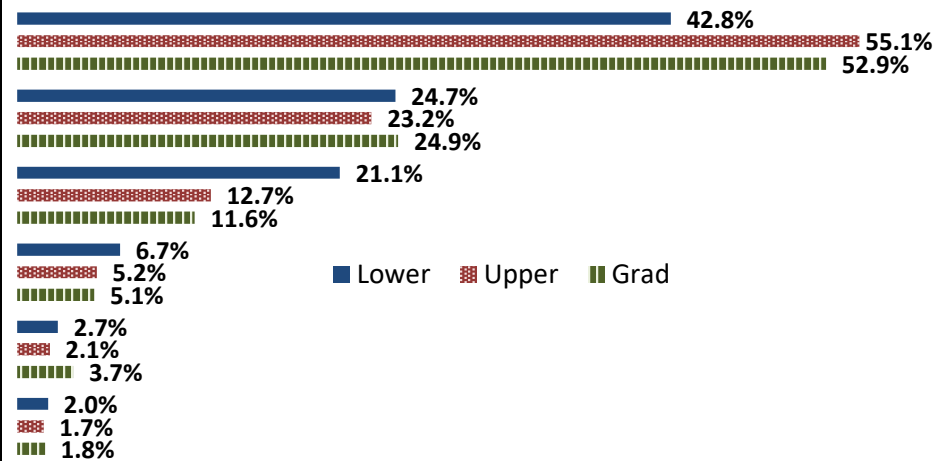
	Response by Course Level			
	Lower	Upper	Grad	Total
All (1)	64.0%	58.9%	72.7%	61.8%
Almost All (2)	25.0%	32.6%	23.5%	29.9%
More than Half (3)	6.3%	5.1%	2.1%	4.9%
Less than Half (4)	4.6%	3.4%	1.8%	3.4%
Mean	1.5	1.5	1.3	1.5
Median	1	1	1	1
Count	820	2944	618	4382

3. Why did you take this course? Choose all that apply.

	Response by Course Level			
	Lower	Upper	Grad	Total
3a. The course fulfills a general education requirement.	52.1%	38.8%	35.6%	41.0%
3b. The course fulfills a requirement in my major.	74.6%	85.7%	84.3%	83.3%
3c. I have enjoyed the professor's class(es) in the past.	4.8%	8.1%	11.8%	7.9%
3d. The course will improve job/career opportunities.	26.1%	31.2%	32.7%	30.4%
3e. The course sounded interesting to me.	24.0%	25.0%	23.2%	24.6%

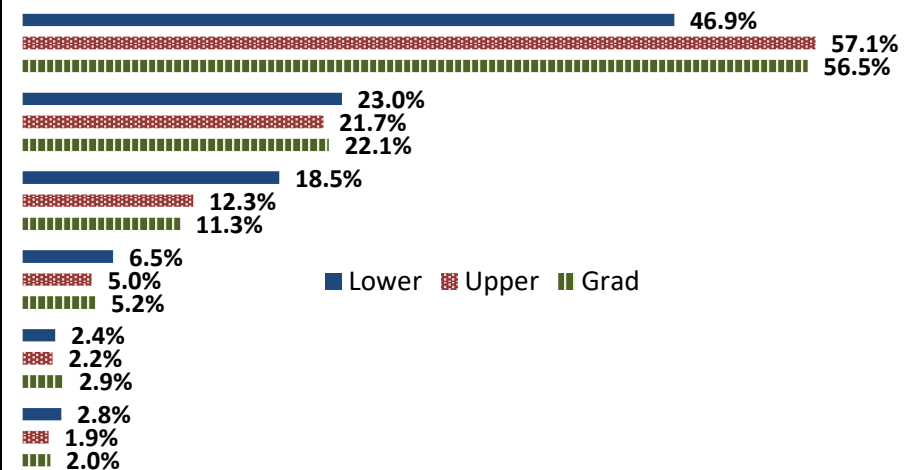
4. How would you rate the overall quality of instruction in this course?

	Response by Course Level			
	Lower	Upper	Grad	Total
Excellent (6)	42.8%	55.1%	52.9%	52.4%
Very Good (5)	24.7%	23.2%	24.9%	23.7%
Good (4)	21.1%	12.7%	11.6%	14.2%
Fair (3)	6.7%	5.2%	5.1%	5.5%
Poor (2)	2.7%	2.1%	3.7%	2.4%
Unsatisfactory (1)	2.0%	1.7%	1.8%	1.8%
Mean	4.9	5.2	5.1	5.1
Median	5	6	6	6
Count	938	3285	654	4877



5. How would you rate your professor's specific contribution to your learning in this course?

	Response by Course Level			
	Lower	Upper	Grad	Total
Excellent (6)	46.9%	57.1%	56.5%	55.0%
Very Good (5)	23.0%	21.7%	22.1%	22.0%
Good (4)	18.5%	12.3%	11.3%	13.3%
Fair (3)	6.5%	5.0%	5.2%	5.3%
Poor (2)	2.4%	2.2%	2.9%	2.3%
Unsatisfactory (1)	2.8%	1.9%	2.0%	2.1%
Mean	5.0	5.2	5.2	5.2
Median	5	6	6	6
Count	936	3282	653	4871



Student Opinion of Teaching Effectiveness (SOTE)- College of Education Fall 2021 Term Summary

1. Rate your interest in the subject matter of this course before you took the class.

	Response by Course Level			
	Lower	Upper	Grad	Total
Very High (1)	52.0%	40.1%	49.9%	46.9%
High (2)	16.9%	26.1%	26.4%	26.0%
Moderately High (3)	19.5%	23.3%	17.4%	19.3%
Moderately Low (4)	7.8%	8.8%	4.5%	6.0%
Low (5)	2.6%	1.0%	1.4%	1.3%
Very Low (6)	1.3%	0.7%	0.3%	0.5%
Mean	2.0	2.1	1.8	1.9
Median	1	2	2	2
Count	77	704	1456	2237

2. How many class sessions did you attend?

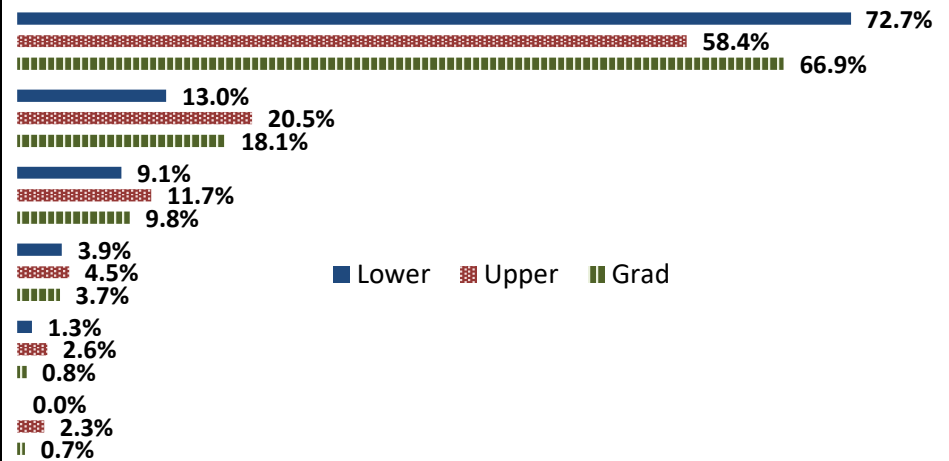
	Response by Course Level			
	Lower	Upper	Grad	Total
All (1)	73.2%	78.5%	82.8%	81.1%
Almost All (2)	23.9%	18.4%	16.2%	17.2%
More than Half (3)	1.4%	1.4%	0.6%	0.9%
Less than Half (4)	1.4%	1.7%	0.4%	0.9%
Mean	1.3	1.3	1.2	1.2
Median	1	1	1	1
Count	71	651	1368	2090

3. Why did you take this course? Choose all that apply.

	Response by Course Level			
	Lower	Upper	Grad	Total
3a. The course fulfills a general education requirement.	36.4%	27.1%	24.4%	25.7%
3b. The course fulfills a requirement in my major.	80.5%	82.1%	85.8%	84.5%
3c. I have enjoyed the professor's class(es) in the past.	5.2%	5.4%	12.5%	10.0%
3d. The course will improve job/career opportunities.	24.7%	32.8%	38.5%	36.2%
3e. The course sounded interesting to me.	31.2%	16.9%	16.2%	16.9%

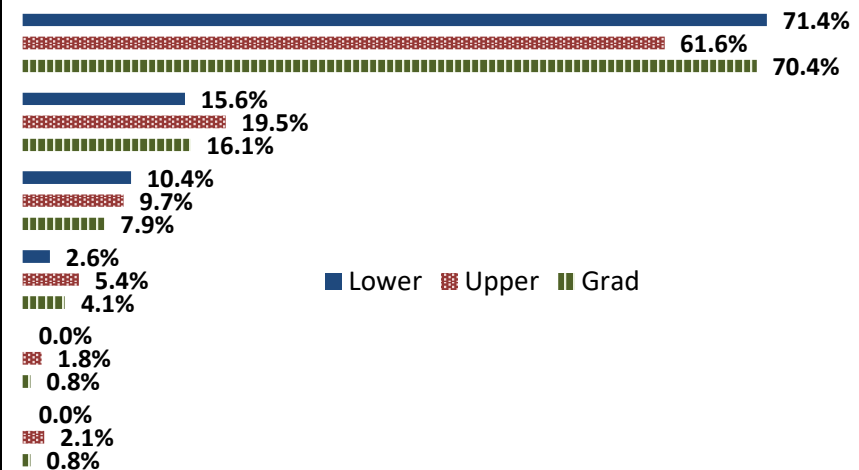
4. How would you rate the overall quality of instruction in this course?

	Response by Course Level			
	Lower	Upper	Grad	Total
Excellent (6)	72.7%	58.4%	66.9%	64.4%
Very Good (5)	13.0%	20.5%	18.1%	18.7%
Good (4)	9.1%	11.7%	9.8%	10.4%
Fair (3)	3.9%	4.5%	3.7%	4.0%
Poor (2)	1.3%	2.6%	0.8%	1.4%
Unsatisfactory (1)	0.0%	2.3%	0.7%	1.2%
Mean	5.5	5.2	5.4	5.4
Median	6	6	6	6
Count	77	728	1478	2283



5. How would you rate your professor's specific contribution to your learning in this course?

	Response by Course Level			
	Lower	Upper	Grad	Total
Excellent (6)	71.4%	61.6%	70.4%	67.7%
Very Good (5)	15.6%	19.5%	16.1%	17.2%
Good (4)	10.4%	9.7%	7.9%	8.5%
Fair (3)	2.6%	5.4%	4.1%	4.4%
Poor (2)	0.0%	1.8%	0.8%	1.1%
Unsatisfactory (1)	0.0%	2.1%	0.8%	1.1%
Mean	5.6	5.3	5.5	5.4
Median	6	6	6	6
Count	77	724	1475	2276



Student Opinion of Teaching Effectiveness (SOTE)- College of Natural Sciences Fall 2021 Term Summary

1. Rate your interest in the subject matter of this course before you took the class.

	Response by Course Level			
	Lower	Upper	Grad	Total
Very High (1)	22.7%	31.5%	43.4%	27.0%
High (2)	22.5%	24.6%	35.5%	23.7%
Moderately High (3)	30.6%	27.0%	13.9%	28.6%
Moderately Low (4)	15.5%	11.5%	5.6%	13.6%
Low (5)	5.2%	3.2%	1.6%	4.2%
Very Low (6)	3.5%	2.2%	0.0%	2.9%
Mean	2.7	2.4	1.9	2.5
Median	3	2	2	2
Count	5792	4575	251	10618

2. How many class sessions did you attend?

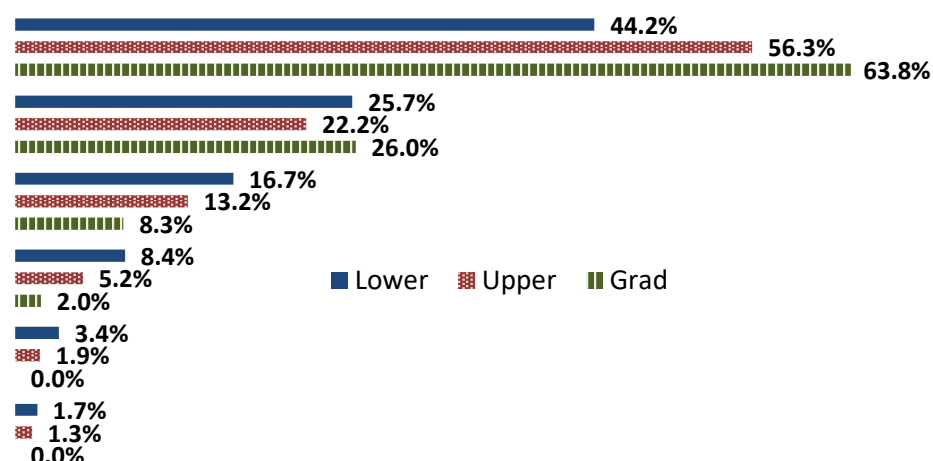
	Response by Course Level			
	Lower	Upper	Grad	Total
All (1)	57.3%	59.8%	66.2%	58.6%
Almost All (2)	35.9%	33.1%	29.0%	34.5%
More than Half (3)	4.9%	4.4%	4.8%	4.7%
Less than Half (4)	1.9%	2.8%	0.0%	2.2%
Mean	1.5	1.5	1.4	1.5
Median	1	1	1	1
Count	5251	4149	231	9631

3. Why did you take this course? Choose all that apply.

	Response by Course Level			
	Lower	Upper	Grad	Total
3a. The course fulfills a general education requirement.	57.9%	33.3%	31.9%	46.7%
3b. The course fulfills a requirement in my major.	67.9%	82.6%	88.2%	74.7%
3c. I have enjoyed the professor's class(es) in the past.	4.0%	9.7%	21.3%	6.8%
3d. The course will improve job/career opportunities.	17.5%	23.6%	43.3%	20.7%
3e. The course sounded interesting to me.	17.8%	24.9%	37.0%	21.3%

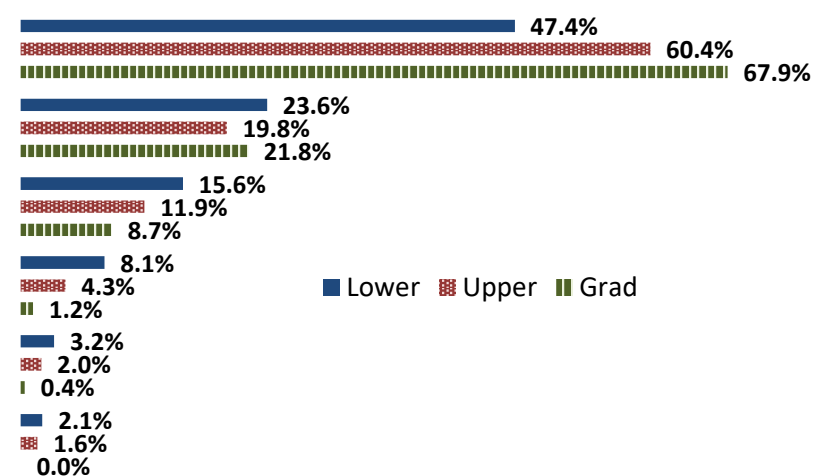
4. How would you rate the overall quality of instruction in this course?

	Response by Course Level			
	Lower	Upper	Grad	Total
Excellent (6)	44.2%	56.3%	63.8%	49.8%
Very Good (5)	25.7%	22.2%	26.0%	24.2%
Good (4)	16.7%	13.2%	8.3%	15.0%
Fair (3)	8.4%	5.2%	2.0%	6.9%
Poor (2)	3.4%	1.9%	0.0%	2.7%
Unsatisfactory (1)	1.7%	1.3%	0.0%	1.5%
Mean	4.9	5.2	5.5	5.1
Median	5	6	6	5
Count	5946	4665	254	10865



5. How would you rate your professor's specific contribution to your learning in this course?

	Response by Course Level			
	Lower	Upper	Grad	Total
Excellent (6)	47.4%	60.4%	67.9%	53.5%
Very Good (5)	23.6%	19.8%	21.8%	22.0%
Good (4)	15.6%	11.9%	8.7%	13.8%
Fair (3)	8.1%	4.3%	1.2%	6.3%
Poor (2)	3.2%	2.0%	0.4%	2.6%
Unsatisfactory (1)	2.1%	1.6%	0.0%	1.8%
Mean	5.0	5.3	5.6	5.1
Median	5	6	6	6
Count	5938	4659	252	10849



Student Opinion of Teaching Effectiveness (SOTE)- College of Social and Behavioral Sciences Fall 2021 Term Summary

1. Rate your interest in the subject matter of this course before you took the class.

	Response by Course Level			
	Lower	Upper	Grad	Total
Very High (1)	20.2%	33.8%	43.3%	29.1%
High (2)	21.6%	23.8%	23.1%	22.9%
Moderately High (3)	30.1%	24.9%	19.8%	26.6%
Moderately Low (4)	17.5%	11.2%	8.3%	13.5%
Low (5)	6.2%	3.7%	3.3%	4.7%
Very Low (6)	4.4%	2.6%	2.2%	3.3%
Mean	2.8	2.4	2.1	2.5
Median	3	2	2	2
Count	4172	5321	857	10350

2. How many class sessions did you attend?

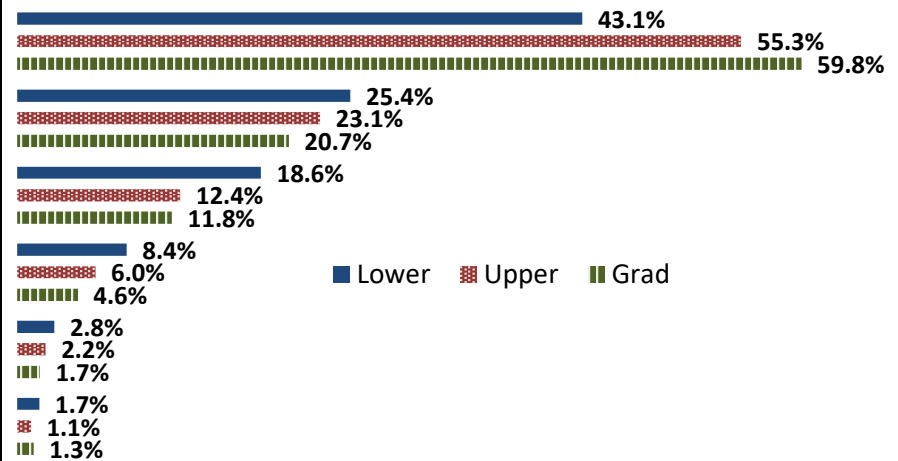
	Response by Course Level			
	Lower	Upper	Grad	Total
All (1)	69.0%	59.0%	76.8%	64.5%
Almost All (2)	21.3%	32.0%	21.9%	26.9%
More than Half (3)	4.5%	5.9%	1.0%	4.9%
Less than Half (4)	5.2%	3.1%	0.3%	3.7%
Mean	1.5	1.5	1.2	1.5
Median	1	1	1	1
Count	3755	4891	789	9435

3. Why did you take this course? Choose all that apply.

	Response by Course Level			
	Lower	Upper	Grad	Total
3a. The course fulfills a general education requirement.	74.9%	40.7%	26.2%	53.4%
3b. The course fulfills a requirement in my major.	45.2%	78.8%	90.8%	66.1%
3c. I have enjoyed the professor's class(es) in the past.	2.5%	9.8%	9.7%	6.8%
3d. The course will improve job/career opportunities.	14.2%	22.1%	24.9%	19.1%
3e. The course sounded interesting to me.	23.3%	34.0%	15.8%	28.2%

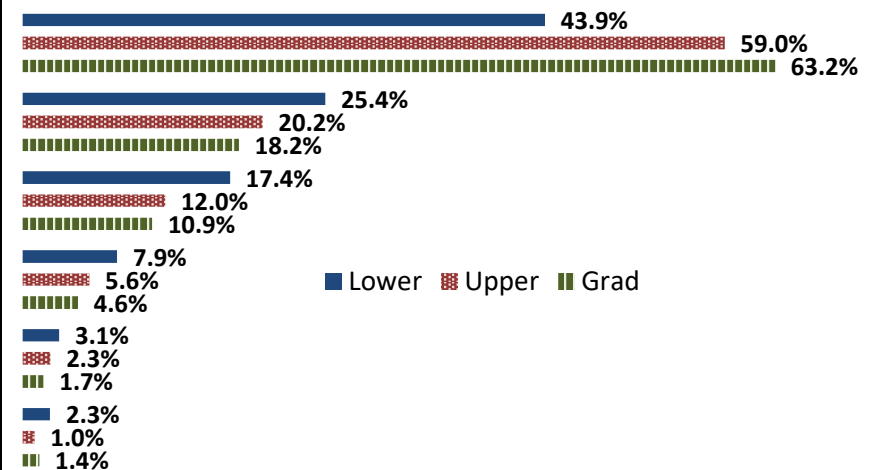
4. How would you rate the overall quality of instruction in this course?

	Response by Course Level			
	Lower	Upper	Grad	Total
Excellent (6)	43.1%	55.3%	59.8%	50.7%
Very Good (5)	25.4%	23.1%	20.7%	23.9%
Good (4)	18.6%	12.4%	11.8%	14.9%
Fair (3)	8.4%	6.0%	4.6%	6.8%
Poor (2)	2.8%	2.2%	1.7%	2.4%
Unsatisfactory (1)	1.7%	1.1%	1.3%	1.3%
Mean	4.9	5.2	5.3	5.1
Median	5	6	6	6
Count	4308	5426	864	10598



5. How would you rate your professor's specific contribution to your learning in this course?

	Response by Course Level			
	Lower	Upper	Grad	Total
Excellent (6)	43.9%	59.0%	63.2%	53.2%
Very Good (5)	25.4%	20.2%	18.2%	22.1%
Good (4)	17.4%	12.0%	10.9%	14.1%
Fair (3)	7.9%	5.6%	4.6%	6.5%
Poor (2)	3.1%	2.3%	1.7%	2.6%
Unsatisfactory (1)	2.3%	1.0%	1.4%	1.6%
Mean	4.9	5.2	5.3	5.1
Median	5	6	6	6
Count	4301	5422	864	10587



Student Opinion of Teaching Effectiveness (SOTE)- College of University Studies Fall 2021 Term Summary

1. Rate your interest in the subject matter of this course before you took the class.

	Response by Course Level			
	Lower	Upper	Grad	Total
Very High (1)	5.6%	19.7%	0.0%	8.1%
High (2)	15.0%	23.7%	0.0%	16.6%
Moderately High (3)	37.1%	23.7%	0.0%	34.7%
Moderately Low (4)	29.3%	23.7%	0.0%	28.3%
Low (5)	10.6%	2.6%	0.0%	9.2%
Very Low (6)	2.5%	6.6%	0.0%	3.2%
Mean	3.3	2.9	.	3.2
Median	3	3	.	3
Count	359	76	0	435

2. How many class sessions did you attend?

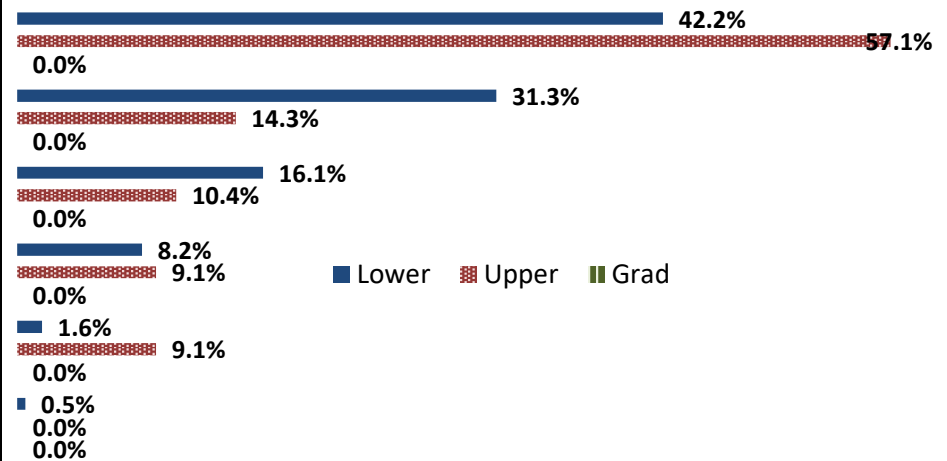
	Response by Course Level			
	Lower	Upper	Grad	Total
All (1)	58.3%	64.2%	0.0%	59.3%
Almost All (2)	34.1%	26.9%	0.0%	32.9%
More than Half (3)	3.9%	0.0%	0.0%	3.3%
Less than Half (4)	3.6%	9.0%	0.0%	4.5%
Mean	1.5	1.5	.	1.5
Median	1	1	.	1
Count	331	67	0	398

3. Why did you take this course? Choose all that apply.

	Response by Course Level			
	Lower	Upper	Grad	Total
3a. The course fulfills a general education requirement.	91.9%	70.1%	0.0%	88.1%
3b. The course fulfills a requirement in my major.	25.3%	19.5%	0.0%	24.3%
3c. I have enjoyed the professor's class(es) in the past.	1.1%	7.8%	0.0%	2.3%
3d. The course will improve job/career opportunities.	5.2%	14.3%	0.0%	6.7%
3e. The course sounded interesting to me.	11.4%	26.0%	0.0%	13.9%

4. How would you rate the overall quality of instruction in this course?

	Response by Course Level			
	Lower	Upper	Grad	Total
Excellent (6)	42.2%	57.1%	0.0%	44.8%
Very Good (5)	31.3%	14.3%	0.0%	28.4%
Good (4)	16.1%	10.4%	0.0%	15.1%
Fair (3)	8.2%	9.1%	0.0%	8.3%
Poor (2)	1.6%	9.1%	0.0%	2.9%
Unsatisfactory (1)	0.5%	0.0%	0.0%	0.5%
Mean	5.0	5.0	.	5.0
Median	5	6	.	5
Count	367	77	0	444



5. How would you rate your professor's specific contribution to your learning in this course?

	Response by Course Level			
	Lower	Upper	Grad	Total
Excellent (6)	48.9%	61.0%	0.0%	51.0%
Very Good (5)	26.2%	20.8%	0.0%	25.3%
Good (4)	15.0%	14.3%	0.0%	14.9%
Fair (3)	6.8%	3.9%	0.0%	6.3%
Poor (2)	2.5%	0.0%	0.0%	2.0%
Unsatisfactory (1)	0.6%	0.0%	0.0%	0.5%
Mean	5.1	5.4	.	5.2
Median	5	6	.	6
Count	366	77	0	443

