

California State University, San Bernardino

## CSUSB ScholarWorks

---

Paw Print (1966-1983)

Arthur E. Nelson University Archives

---

4-15-1981

**April 15th 1981**

CSUSB

Follow this and additional works at: <https://scholarworks.lib.csusb.edu/pawprint>

---

### Recommended Citation

CSUSB, "April 15th 1981" (1981). *Paw Print (1966-1983)*. 353.  
<https://scholarworks.lib.csusb.edu/pawprint/353>

This Article is brought to you for free and open access by the Arthur E. Nelson University Archives at CSUSB ScholarWorks. It has been accepted for inclusion in Paw Print (1966-1983) by an authorized administrator of CSUSB ScholarWorks. For more information, please contact [scholarworks@csusb.edu](mailto:scholarworks@csusb.edu).



## Draft News

by Brett Wyatt

The Selective Service is now actively recruiting potential Draft Board members and has published a test application form. A pilot program has been initiated in the state of Maryland, and applications are being processed from that state. It has been announced that the Selective Service will begin sending information concerning suspected non-registrants to the Justice Department during this month. Selective Service is confident that the Supreme Court will uphold the constitutionality of the mandatory registration program and that prosecutions for non-registration can begin this summer. A bill has been introduced to Congress which would take away the authority of Federal Courts to try draft cases and turn over the authority to Military Courts (HR 1365). In the 17th edition of the Federal Register, page 12580, the Selective Service announced that it has established a new file, the "Suspected Violator Inventory Monitoring System." The Selective Service says that there are only 150 people listed in its violator file for the entire U.S. Considering that over 250,000 failed to register for the draft during the Vietnam war and that only 250 were ever convicted, the non-registrant's odds are dependent upon the degree of participation. At this time, there are many non-participants. It has been suggested that the Selective Service may rely solely on informants to uncover non-registrants, quite a costly and arduous task. The Selective Service has also published new rules concerning men with traces for those concerned. Also, the case of Wolman vs. U.S. is still pending concerning the right of the Selective Service to require Social Security Numbers at the time a person registers for the draft because it is in violation of the Privacy Act of 1974. Be advised that if a registrant withholds his SSAN at the time of registration that a

cont'd on page 11.



Wooden cabinet from the woodworks collection now on display at the Art Gallery. More photos of the exhibit are on pages six and seven.

## El Salvador Seminar Set For April 22

A seminar on the current situation in El Salvador, where over 10,000 people were killed last year by government military forces, will be held Wednesday, April 22 in the Student Union MultiPurpose Room (SUMP) at 12 noon. Organized by faculty members Thomas Meisenholder (Sociology), Jeanne Schuler (Philosophy), and Christopher Niggle (Economics), and presented in association with the U.S. Committee in Solidarity with the People of El Salvador (CISPES), the presentation will feature a film, "El Salvador: Another Vietnam?" and a discussion with a CISPES representative. The organizers hope to familiarize CSCSB

students, faculty, and staff with the motives behind the ongoing conflict between the current military regime and the leftist rebel forces, and to increase student awareness of the United States' present, and perhaps future role in the war-torn Central American nation.

At press time, a demonstration protesting U.S. support of the military junta in El Salvador has been scheduled for Saturday, April 18, at 11:00 a.m. in front of the Salvadoran consulate in Los Angeles at the corner of 8th and Columbia. The demonstration will be followed by a march to MacArthur Park at 1:30. Ed Asner is the Master of Ceremonies for the event.

## Nine Vie For A.S. Offices

Nine students have been certified as candidates in the upcoming A.S. Elections on April 22 and 23.

Candidates for A.S. President are A.S. Vice-President James Lyne and Publications Board Chair Pauline Barbour. The lone candidate for A.S. Vice-President is A.S. Board of Directors member David Nemezes. Seeking the office of A.S. Treasurer are former Vice-President Sandy Case, PawPrint Business Manager Gregg Bynum, and Anti-Tuition Coordinator Marianna Westerly.

Three candidates have been certified for three separate seats on the A.S. Board of Directors. They are Shari Mills from the School of Administration, Elise Traynum for the School of Social and Behavioral Sciences, and Mary Ann Millard for special, Dual and Interdisciplinary Majors.

No candidates have been certified for seats on the Board of directors to represent the School of Humanities, the School of Education, the School of Natural Sciences, and Undelcared Majors. Elections Chair Cheryl Chambless announced on April 13 that nominating petitions for these offices, and these offices only, would be accepted through 12 noon on Thursday, April 16. Petitions are available and must be turned in at the Student Union Reception Desk.

The polls will be open from 8:00 to 8:30 p.m. on Wednesday, April 22 and Thursday, April 23. They will be located at either the crossroads between Creative Arts and the Library, or at the south entrance of the Library in inclement weather.

cont'd on page 3

## Bookstore Check Cashing Privileges Threatened

According to Associated Students Vice President James D. Lyne, the "cash back" check cashing policy now in effect at the campus bookstore may be in jeopardy of cancellation. The problem apparently stems from a large number of checks being returned from the banks for various reasons. Already, the A.S. Board of Directors has had to allocate additional funds to cover "bounced" checks; on April 8th it voted to allocate \$54.00, just to cover billing for those accounts which had not been repaid.

The present agreement is that the bookstore will only take checks for the amount of purchase; any "cash back" is

underwritten by A.S. What this means is that if one of the cash-back checks bounces, A.S. will reimburse the bookstore the amount of cash given, which is limited to \$20.00. The problem, according to Lyne, is that "In the past we've been pretty passive about the collection methods we've used. That's over."

The A.S. is now imposing sanctions on offenders, including restriction from participation in any A.S.-funded activities, publishing the names of such people in the PawPrint, and filing criminal charges with the police. The possibility of withholding school records is currently being looked into.



# The PawPrint

The PawPrint is published under the control of the CSCSB Publications Board. It is published on a weekly basis during the academic year for a total of thirty-one issues less quarter breaks and final exam periods. Contact the office at 887-7497, 5500 State College Parkway, San Bernardino, CA, 92407, for further information.

Advertising requests should be addressed or directed to the Business Manager at the address and number above.

Classified ads may be ordered similarly except that such ads for students, faculty and staff of CSCSB up to twenty words in length are free.

Ad and Copy deadlines are the Friday preceding the date of publication. Copy received after that date appears in the paper on a space available basis.

Ad Policy The PawPrint accepts all advertising in good faith but makes no warranty, and does not check any goods or service advertised.

Letters to the Editor should be kept to a maximum of one and one half typed pages. Letters which attack any person may be held until that person has time to respond in the same issue as the other letter. Letters must include name and address, a phone number and must be signed although names will be withheld upon request.

The PawPrint reserves the right to edit all copy submitted in order to comply with space requirements, libel laws and good taste.

The PawPrint is funded in part by an annual allocation by The Associated Students to cover the costs of printing and expenses. It is distributed free to students and to the community. The remainder of the funding is developed by The PawPrint itself through program generated revenue accounts from advertising.



## STAFF

Editor-in-Chief

Karen M. Newcombe

Asst. Editor.....Brad Johnson  
Business and  
Advertising.....Gregg Bynum  
Entertainment.....Terry Seal  
Photo Editor.....Randy Lanier  
Layout.....Kevin Laughrun  
Typography.....Bill McCluskey  
Reporters.....Louise Connal

## LETTERS TO THE EDITOR

Dear Editor

I am writing to object to a column and to clarify a possible misunderstanding in your April 8th issue of the PawPrint. You advertised a Christian Lecturer on the top of page 3 and stated that she was sponsored by various Christian Clubs on campus.

The Newman Club is a Christian Club on campus but is not sponsoring or endorsing Decision '81. It is important in matters of religion to cite the exact names of clubs involved since, while there does exist a common interest, there are also many theological differences.

I sincerely hope you clarify this misunderstanding in your next issue. Thank you.

Maura O'Neill, director  
Newman Club

### Correction

Psi Chi Aligns With National Standards.- Please note that the article that appeared on April 8th, 1981 had an important error in it; it should read: for undergraduate students a 3.0GPA in overall is required, not a 3.5GPA as was printed. Sorry for my error!

Cristi Quiros

### Pawprint Notice

Due to an increase in typesetting, the deadline for submitting press releases, articles, ads, etc., will be changed from Friday 12:00 noon to Thursday 10:00 a.m. for the next week's issue.

## A.S. Elections...

cont'd from front page

The following is a brief profile of each candidate:

### PRESIDENT

James D. Lyne is a 26 year old junior majoring in English and Philosophy. He is currently serving as A.S. Vice President. Last year he served on the Board of Directors and spent several months as Executive Editor for The PawPrint. He is also a member of the Philosophy Club and Sigma Delta Rho. Lyne says he is running for President "to insure a continuation of student advocacy in A.S. government."

Pauline A. Barbour is running for President because she "cares about the students of this campus." She is currently serving as chair of the Publications Board, and was also manager of the A.S. Book Co-op. An Air Force veteran, she has been active in the Veteran's Club on campus. A 26 year old junior majoring in Accounting, she has been on the Dean's List several times. Barbour is married to a deputy sheriff and has two children.

### VICE PRESIDENT

David Menezes has been an active member of the Board of Directors during his first year here, and at the same time he is a student at San Bernardino Valley College, where he serves as the student member of the Board of Trustees for the San Bernardino Community College

An Elections Bulletin with statements from all the candidates will be distributed on campus next week by the A.S. Elections Committee.

District. Prior to coming here, he served on the Student Senate at SBVC and received several awards including the Bank of America scholarship. A 26 year old junior, majoring in Criminal Justice and Sociology, Menezes is running because he wants to be of service to students as their Vice President.

### TREASURER

After two quarters as A.S. Vice President last year, Sandy Lyn Case is seeking to return to the A.S. offices as Treasurer. A 21 year old senior with a special major, Case's involvement with A.S. goes back to her Freshman year. She is running for Treasurer because she feels she can accomplish a lot with her past experience as a background. She is currently the Treasurer of the Committee for Clubs.

After coming here, in the middle of last year Gregg Bynum has jumped right into getting involved. He is currently Business Manager for The PawPrint, President of the Black Student Union, and A.S. Services Committee Chair. A 21 year old junior, Bynum is running for Treasurer because of its close relationship to his major in Accounting.

A 26 year old junior majoring in Math, Marianna Westerly transferred here this year from Cal State Bakersfield where she was extensively involved in the student government and the dorm association. On this campus she has served as co-chair of the Anti-Tuition Coalition, as a member of the

Publications Board, and as a statewide student representative on the CSUC Professor of the Year Committee. She is running for Treasurer because of her concern for student interests and issues.

### BOARD OF DIRECTORS

Mary Ann Millard, a 43 year old junior majoring in Sociology and Social Sciences is seeking the seat representing Special, Dual and Interdisciplinary majors. She has been involved with the P.T.A., the Girl Scouts, as well as political and charitable organization. She is running for office as another way of getting involved in the life around her.

Twenty-two year old Shari Mills is seeking to represent the School of Administration where she is a senior majoring in Business Administration. She has spent this year serving as Publicity Committee Chair, and then as Special Assistant to the President where one of her duties is being co-chair of the Anti-Tuition Coalition. Last year she was recognized for her many contributions as a member of the Serrano Village Council. She feels her experience in A.S. will help her effectively represent the students.

Elise Traynum wishes to start her involvement in A.S. by representing students in the School of Social and Behavioral Sciences where she is a junior majoring in Political Science. The 31 year old has been involved outside of campus in the P.T.A. and the Ontario chapter of the Young Democrats.

## Crowning New Campus Clowns

Even in the face of impending financial doom, it appears, students at some colleges and universities have a hard time taking the need for campus leadership seriously. Already, as the opening shots in the annual election battles are fired, "joke" candidates are making their mark.

More than 4,000 Princeton U. students voted to install the Antarctica Liberation Front in three of six student government positions. ALF, also known as Jihad for reasons not entirely clear, ran on a platform of law and order, and carried out its campaign promises at the first student government meeting. Among the resolutions introduced and passed by the ALF-dominated group were a

dawn-to-dusk campus curfew, a bill annexing all property between the yellow lines on highways for Princeton, and a declaration of war on the Hun School of Princeton.

After these antics, however, the three ALF offices submitted their resignations, citing the irresponsibility of student government in taking such action.

Georgetown U. students didn't have to wait long for Morton Shapiro to abdicate his elected position as student senator from the engineering school. In fact, Shapiro disappeared even before he was elected. Such action was made easier by the fact the senate candidate never existed, except in the imagination of three other

students, who created his name, student number and address, as well as his power-hungry platform. "Some senators will realize that one who doesn't exist can get elected," says senator-elect Oscar David, one of Morton's creators. "Once the egos are deflated, we can get right down to business." The student government election committee decided recently not to take action against the three for election code violations.

The person taking action against those who violate U. of Wisconsin-Madison codes will be a man of extensive experience with law enforcement. Dwight Armstrong, who was paroled after serving three years of a seven-year term for his role in a UW war-protest bombing in

which a graduate student was killed, was recently appointed to the Student Court of Appeals by Teddi-Michele Beam, president of the student government. "I think his experience with the judicial system would lend a certain personal emphasis to the court," says Beam.

The personal emphasis for the victors in the recent Georgetown U. student government elections is humor. Steve Mardiks and Jeff Perez mounted two unsuccessful campaigns for president and vice president before winning this year in a landslide. Said the student newspaper of the Mardiks-Perez victory: "the electorate...put into office a team that lampooned the resume-hungry stereotype thought to dominate (student govern-

ment)."

An unusual campaign against alleged domination is going on at Miami U. of Ohio. There, seven students dressed up in hiking boots, knickers and four-fingered stocking caps to march across campus singing "Hi ho, hi ho, off to work we go," the theme song of the seven dwarfs of "Snow White and..." fame. The symbolism is obvious. "The rights of students have become so small here that they're dwarfed," says Dan Adams, the pint-sized student government presidential candidate. "We're being treated like children."

Reprinted from National Campus Report.



## CSSA Newsletter April 1981

**Tuition** - At its Statewide Meeting in March, the California State Student Association committed itself to an all out effort to stop the implementation of tuition. Legislative hearings on the Legislative Analyst proposed graduate tuition have been scheduled for late April and early May. The final decision on tuition will occur between June 15 and July 1, 1981.

The CSSA is urging campuses to make the prevention of tuition their number one issue. Anti-tuition postcards, buttons and posters can be ordered from the CSSA Sacramento office. We must act quickly if we are to be successful with our campaign.

CSSA leadership and legislative staff are available for campus visits concerning the tuition threat. Please contact Nancy McFadden or Steven Glazer.

**Nonresident Tuition** - A proposal to increase nonresident tuition 75% next year has passed the Board of Trustees and the budget committees in both the Assembly and Senate. There is little chance to stop this increase for next year.

**29 Student Service Fee Increase** - This fee increase has also passed the Board of Trustees and the Finance subcommittees of both legislative houses. The only bit of good news that can be attributed to this increase and the nonresident tuition increase is that it is helping to defuse the momentum for graduate tuition.

**Hazing Legislation** - Assembly Bill 1265 by Assemblyman Cramer which is sponsored by the CSSA has been introduced into the legislature. This bill would increase the maximum penalties for hazing from \$500 to \$5000 and from six months in the county jail to one year. It also requires public colleges to publish in the campus catalogue rules and regulations against hazing and to require internal organizations to place these rules and regulations in their buildings and to have them posted in their facilities.

## Scholastic All-American Committee

The Scholastic All-American Selection Committee is now accepting applications for the 1981 Spring Semester. Students who are active in scholastic organizations and who perform well in class are asked to join.

The Scholastic All-American is an honor society founded to recognize this country's top undergraduate and graduate students. Students are selected from over 1,280 schools covering all 50 states. Members participate in various nationally organized service projects each year.

Students are selected for consideration based on the extent of their academic and scholastic performance both in and out of classroom. No one factor is weighed heaviest when a new member is considered. A student's best asset must be his or hers "well roundedness."

Interested students are asked to send a stamped, self-addressed envelope to "Application," Scholastic All-American, Administrative Offices, P.O. Box 237, Clinton, New York, 13323.

All students are encouraged to submit an application regardless of their grade point average.



Photo by Randy Lanier

*Sequoiadendron giganteum*, flourishing on campus.

## Financial Aid Travesty

The California State Student Association is concerned that over 50,000 California State University and College students who receive federal financial aid will be victims of the current budget cutting operations of President Reagan's Administration. The Administration is proposing significant cuts and policy changes in student assistance programs. "To a large extent, it appears that students are falling outside of the Reagan 'safety net,'" stated Donne Brownsey, CSSA Legislative Advocate. The Pell Grant program (formerly BEOG) in particular is currently suffering from the Administration's efforts to reduce spending. The Department of Education has pulled specified, current regulations that are essential components of the eligibility formula in processing the Pell Grants. This decision has brought the processing of the grants to a halt. Brownsey believes that this decision is simply outrageous. Students who normally start

receiving their eligibility notifications in February will not receive them until June at the earliest. "This places students and financial aid officers in a terrible position in terms of planning."

Most students applying for Pell Grants will, as a result, not have adequate information regarding their financial aid status which will adversely impact their ability to make a decision about attending college. In 1979/80, the CSUC system with its 19 campuses had 46,297 students on Pell Grants. The total amount of dollars awarded to CSUC students was \$32,583,502. "We are talking about a significant number of potential and continuing students who are affected by this decision," stated Nancy McFadden, CSSA Chair.

National education organizations are recommending that the Department of Education use the 1980/81 regulations concerning the Parent Contribution Schedule and the

cont'd on page 11.

## School Violence Lecture

A lecture on school violence will be held tonight, April 15, at 8:00 p.m. in PS 10. The lecturer is Dr. Robert J. Rubel, Director of Research of the Institute of Criminal Justice Studies, Southwest Texas State University.

Rubel is a nationally known expert in the field of "School Violence." Previously he worked for the Office of Criminal Justice, Law Enforcement Assistance Administration.

He is the author and coauthor of the following books on school violence: *The Unruly School: Disorder, Disruptions, and Crimes*, 1977; *Violence and Crime in the Schools*, 1980; in addition he authored several reports for government agencies, and published many articles on this subject in professional journals.

## Campus Sequoias Rare In Area

Sequoia redwoods are usually identified with Northern California, but the Cal State, San Bernardino campus is in the enviable position of having its own miniature redwood forest.

Twenty-five *Sequoiadendron giganteum* redwoods were planted in 1970 in the area north of the Library. The planting was an experiment since redwoods prefer humid conditions, with greater rainfall and acid soil. As they usually are not seen on the windward side of the ocean, the Cal State stand is rare, according to Roy Kato, from Kato and Jordan in Pasadena, the master plan landscape architect for the college.

Only four of the redwoods have been lost; the remaining 21 are thriving and now stand 20 to 25 feet tall. Under optimum conditions, they will grow to more than 300 feet and live hundreds of years.

In order for the redwoods to survive, it has become necessary

to cut out some alders which are crowding them and cutting out the sunlight, Kato said. The alders, which are almost twice as tall, are a vigorous faster-growing tree. However, in forestry circles, they are considered fairly short-lived, lasting a mere 20 to 40 years.

Within the past month, the college has planted another 85 new trees, including sycamore and flowering plum and peach, around campus. Some 60 sycamores were transplanted from behind the Library to along the road leading to the Physical Plant.

Because of the heat, cold and particularly the wind conditions on campus, the plant palette for the campus site is limited, explained Kato. The combination of trees which can be expected to survive on campus drops to about 20 varieties, as compared to some 100 which could be planted elsewhere in the city, he said.



## What is a Festival Weekend of German Arts and Life?

The American Association of Teachers of German, Southern California, sponsored a Festival weekend for college and university students of German at Camp Round Meadow, Barton Flats, California, March 27 through March 29.

Among the 85 students who came from UC Irvine, UCLA, Fullerton, and Saddleback, CSCSB was strongly represented with following 13 students: Debbie Billings, Coralinda Clerx, Daniel Curtin, Jean Hall, Penny Hillin, Farah Mansurian, Shari Miller, David Nelson, Jeannie Parks, Linda Robinson, Marie Schulte, Russel Spencer, and Richard Stelle. The instructor for the group was Miranda Muson.

The objectives of this Festival were to develop increased student interest in the German language and culture (all festival participants were required to speak only German during the time at camp) & to provide an opportunity for students to use German in meaningful communication situations during an extended period of time.

Activities included sports, various interest sessions, hiking on nature trails, a performance and a work shop by the Berlin actress Ina Wittich, a variety show by the students and dancing to a live band under the direction of Russel Spencer.

The CSCSB group put on a variety show titled "Highlights of German Music." The numbers, suggested by the instructor, were created by the students themselves. They included a rendition of Brahms' *Lullaby*, Heine's *Loreley*, Marlene Dietrich's *Lilly Marlene*, an operetta skit, and a performance by the "Four Beatles" singing to the original soundtrack of the Beatles in German.

This was the first Festival Weekend of German arts and life. It was most successful, and, according to Miranda Munson, it will surely not be the last.

## One Man's View of Women

- Humor

by Eric Frazier

Since the beginning of time, man has continued to let woman wiggle her way into respect, prestige and authority in the business world. This, of course, is temporary and undeserving of the brainless female. It is not the divine order of God for any woman to usurp authority over any man. It was not the intentions of the creator and will not ever be. In the future, man will be able to control woman's every spoken word, action and movement. Women will be set back to their primitive, yet basic, God-given duties of barefoot pregnancy, keeping house, giving Tupperware parties and fulfilling man's intimate desires.

In the future, man will be given a direct command by God to bring women back to their preplanned place on earth. They will be required to wear beige color smocks and congregate in one place to eat, shower and get V.D. shots once a month. This is to keep them happy and well rounded individuals socially. They will be required to wear bras in public and social gatherings. They will be shipped in large numbers by space shuttles to foreign countries and different places in the states to do menial chores and dirty work for which they were genetically and mentally created. Jerry Fallwell, leader of the Moral Majority, was quoted as saying, "women will never be able to hold a job in the future." It was thought that women would prefer to stay second class objects if they were given a choice. But some of the more masculine and even less brainless women encouraged the subservient ones to rise up against God's preplanned destiny. This is why man must control women in the future. Man will keep them law abiding citizens by fining them \$25.00 for every law they break and tattooing bright red X's on their foreheads each time they break the law. After ten X's they will be sent to prison and used to sexually relieve prison inmates for the rest of their lives. Women will be dehumanized, tortured, institutionalized and made to wait on every man. They will no longer have the freedom they enjoy now. And when women are brought back to their natural position, man will be able to relax and enjoy the finer points in life.

## Decision '81

For the Newman Club's official position on Decision '81, see the letter on page two of this issue.

by Terry Seal

"Decision 81," sponsored by the Christian Clubs on campus, is a week of events that has been dedicated to the presentation of Jesus Christ and the Christian lifestyle. It is being advertised as a chance for everyone on campus, no matter what their religion, to learn more about the Christian life, and then apply what they have learned to their own lives, so they can make a decision as to whether or not the Christian lifestyle can honestly make a difference.

"From the beginning," says Mona Wilkin, who has been involved in the preparations for these events, "we saw that the purpose of Decision 81 was to enlighten these people on campus, to let them know about the difference that Jesus has made in my life, and to give them an opportunity to make a change in theirs."

To that end, Christian Clubs on campus have arranged for this week a series of speakers, films, and gospel bands. Highlights of the week include a speech on Monday, April 13, by Greg Laurie, pastor of Calvary Chapel in Riverside. Also on Monday there was a Josh McDowell film, *Givers, Takers, and Other Kinds of Lovers*. On Tuesday there were performances by gospel bands "Cornerstone" and "Tephila."

Today at 11:45 the band "Glory Beat" will perform, followed at 12:00 by speaker Rev. Sinn. This evening at 6:30 the "Undercover" band will perform along with the "Rapture Repertory Company." Tomorrow the speaker will be Chuck Singleton, and the band "Philadelphia" will be featured.

Decision 81," according to its promoters, offers a challenge. Says Wilkin, "We challenge you to look beyond the entertainment to the meaning." She adds, "We believe that we can make a difference in the world that we live in. We don't believe that the world should stay the way it is. There is a possibility for change.

## Newman Club Sponsors Discussion Series

The Newman Club is sponsoring a series of discussions on topics of morality and religion. Each session starts at noon on Tuesday in the Student Union Senate Chambers and is repeated the following Thursday at 10 a.m. in Student Union Meeting Room A. The following is a list of dates and topics for the series:

April 14th	Morality of Sex and Other Issues
April 28th	Morality Continued
May 5th	El Salvador: Is There A Moral Issue?
May 12th	War & World Hunger
May 19th	Feminism in Society and Religion
May 26th	Many Religions - One God?

## Raku Luncheon

### Scheduled for

### Open House

by Karen Newcombe

At the end of last quarter the Art Club under the guidance of President Sandy Christian and ceramics instructor Bill Warehall, held an unusual luncheon termed a *Raku* Ceremony. For two dollars, one could have all the food that one could eat of the most delicious homemade Oriental food. Or, for five dollars, one could buy a ceramic *Raku* bowl or cup, decorate it and have it fired in the traditional *Raku* style, then proceed to eat all you could of the food. The food was prepared by Ken Reid of the Art Department and his wife Charlotte.

The *Raku* Ceremony is an ancient Japanese religious ceremony which grew out of Zen Buddhism - the name *Raku* stemming from one of the early potters. Small, crude tea cups or "Happiness Cups" are formed and decorated, then fired during the course of a pleasant evening in a tea garden. Contemplation of beauty is the party's purpose, the result being greater understanding and identification with the oneness of all creation.

The bowls are placed in a hot kiln and fired for 20 minutes or

more at temperatures ranging from 1600F-1750F. After firing the bowls are carried by using tongs and placed in sawdust where the heat of bowls causes the sawdust to smoke and burn. The glaze on the bowls turns a slight iridescence and a sudden temperature change cause cracks in the glaze which smoke and blackness. They are then removed from the sawdust and placed in water to further cool and they are finally cleaned. The resulting ceramic piece is one of an unusual finish with hairline cracks having the appearance of an antique.

The *Raku* Ceremony was attended had a great time. Volleyball was also played. The Art Club will be having another *Raku* Ceremony between 12 p.m. and 2 p.m. April 26th during Open House celebration. Featured along with the Oriental food will be Volleyball, an Art sale of ceramics, print wood objects, as well as wood made from glass. Featured by the Art Department are demonstrations in glassblowing, woodworking, and ceramics. Don't miss this one!



# Festivities, Exhibits Etcetera

## LIBRARY

**Orange Show Memorabilia** (CSCSB material). Library; Hours: Mon.-Thurs., 8 a.m. to 10 p.m.; Fri., 8 a.m. to 5 p.m.; Sat., 9 a.m. to 5 p.m.; Sun., 1 p.m. to 9 p.m.; free.

April 25 - May 24

**Turn Of A Leaf** (color photographs of wilderness areas). Library; Hours: Mon.-Thurs., 8 a.m. to 10 p.m.; Fri., 8 a.m. to 5 p.m.; Sat., 9 a.m. to 5 p.m.; Sun., 1 p.m. to 9 p.m.; free.

April 29 - May 22

**Western Book Exhibit.** Library; Hours: Mon.-Thurs., 8 a.m. to 10 p.m.; Fri., 8 a.m. to 5 p.m.; Sat., 9 a.m. to 5 p.m.; Sun., 1 p.m. to 9 p.m.; free.

April 21

**Music At Cal State Series, Solid Brass.** Recital Hall, Creative Arts Building; 8:15 p.m.; general admission \$2, students with identification \$1.

April 26

**Music At Cal State Series, Harris String Quartet.** Recital Hall, Creative Arts Building; 8:15 p.m.; general admission \$2, students with identification \$1.

April 29

**Choral Festival For High School Students.** Creative Arts Building; all day.

April 26

**Open House.** 5 p.m. Musical entertainment, drama presentations, alumni luncheon, barbecue, children's art fair, tours of campus, square dance exhibition, computer demonstrations, health fair.

April 30 - May 1

**Renaissance Festival.** Dinner presented by Chamber Singers. Commons; 7 p.m.; call 887-7454 for an invitation.

## Foreign Film Schedule

by Terry Seal

The California State Foreign Film Festival which has been running since January 31st will offer five more films this quarter. Located in PS 10 and sponsored by the Foreign Language Department, The President's Club, and the Associated Students, the festival will show its next film on Saturday, April 11th. The film is a Spanish documentary, **Caudillo--History of the Spanish Civil War.** Admission is free.

"We've tried to get good films that are representative of their countries," says Jorun Johns, chairman of the Foreign Languages Department. This quarter, along with the Spanish documentary, the film festival will present **Crime and Punishment**, a classic film from Russia, and three German films--**Confessions of Felix Krull** (a comedy to be shown on April 18th), **The American Friend**, and **Steppenwolf**--based on the Herman Hesse novel.

John describes **The American Friend** as a "whodunnit". It is advertised in the festival brochure as a "visually rich thriller" concerned with the strange interactions of a Hamburg artisan, a French gangster, and an American go-between. **Confessions of Felix Krull** is based on the actions of an "opportunist rascal" who manages to escape the draft by faking an epileptic seizure during his physical and then starts to maneuver his way up in life after taking a job as an elevator boy at a Paris hotel. **Crime and Punishment** is based on Dostoyevsky's historic novel that has been described as the cornerstone of Russian literature. It is the story of a poor Russian student who is driven to murder, and whose subsequent guilty behavior rouses the suspicions of an inspector. All of these, along with **Caudillo** and **Steppenwolf**, will be shown on Saturday at 7 o'clock p.m.

## "Noches de Atzlan" Coming April 29

Kicking off the 1981 Cinco de Mayo festivities, the highly-acclaimed musical, "Noches de Atzlan," will be presented on Wednesday, April 29, at 12:30 in the SUMP. This Mexican-American Heritage Pageant, under the direction of Eloisa Segovia, is staged by the San Bernardino Valley College MECHA.

The production, being brought on campus as part of the College Information Day for Community College Students, is being sponsored by the Inland Empire Chapter of RACHE (Raza Adiministrators and Counselors in Higher Education). Among the on-campus RACHE members planning the

CID are: Laura Gomez de Chamorro (coordinator), Eula Brown-Martinez, Enequina Chavez, Rosa de Anda and other staff from the E.O.P., S.A.I.L. and S.A.A. offices.

The musical production vividly depicts the rich and colorful history of the Southwest through the recollections passed on by the abuelos (grandparents) to their nietos (grandchildren). The play centers around such historical figures as Montezuma and Father Miguel Hidalgo, who are among those that theatrically come to life as the play involves via monologues, speakers, dancers and musicians.

## Piano Recital Tonight

Althea Waites, CSCSB lecturer in music, will present a piano recital tonight, April 15, in the Recital Hall, featuring a mixture of classical and contemporary music.

Selections from Mozart, Brahms and Chopin will constitute the classical pieces while five short pieces by Dr. Richard Saylor, professor of music at Cal State, will make up the contemporary part of the program.

The featured music will be Brahms' Trio in B major, which will be the second half of the program. Performing with Waites on violin will be Carol

Cheek, a violin instructor at the college, and Michele Tachia, cello, a CSCSB graduate in music who is pursuing her graduate degree in music at San Diego State University.

The other pieces chosen for the program are Mozart's Fantasy in C major and Chopin's Polonaise-Fantasy, Opus 61.

The recital is part of the Faculty Artist Series of the Music at Cal State program. The performance will start at 8:15 p.m. in the Creative Arts Building Recital Hall. Tickets are \$2 general admission. Students with identification and children are \$1.

## Woodworking Exhibit A Featured Attraction At Open House

by Terry Seal

The Cal state art gallery, under the direction of art teacher Leo Doyle, is currently featuring a woodworking exhibition, representing the work of nine top craftsmen from the southern California area, all of whom are teachers at the college level. The exhibition shows a wide range of woodworking craftsmanship, from the sweeping, futuristic chairs of Jack Rogers Hopkins to the sculptured, bizarre imagery of Bruce Decker to Martha Rising's elegant, flowing artistry. This is artwork that can be admired, and looked at, and functionally used.

Opening on Monday, April 6th, and running until May 8th, the exhibition is scheduled to be a featured attraction at the Cal State Open House on April 26th. Of the nine artists involved, two are from Cal State, San Bernardino - Doyle and Becker. Doyle's work in the exhibit consists of a pedestal and a rounded, glassen, shotgun cabinet. Decker's work shows a table in the form of a man's shirt, along with a serving table carried by hands that come out of a wall.

Of the rest, Lawrence B. Hunter and Robson Splane exhibit pieces that are rounded and smooth and flowing. Hunter shows a gallery desk and cabinet. Splane shows a couple of functional chairs with a clean, rounded design. Michael Chinn, John Nyquist, and Dick Ryerson also contribute artwork to the gallery, open Monday through Friday from 9 a.m. to 12 p.m., and from 1 p.m. to 3 p.m.

## An Evening With Constantinos Tellalis

by Sandy Del George

The eclectic music of Constantinos (Constantine) Tellalis was on display at his senior recital held April 8 in the Recital Hall. An exceptional symposium of international music, the recital featured pieces from Javanese to Bluegrass.

Highlights included hypnotic intervals of pre-recorded electronic music, whose haunting themes punctuated dramatic live performances by John Browning (piano and celeste), Mark Bailey (vocals), Frances Petrovic (violin and timpani), Joan Cochran and David Flatt (flutes), Jerry Neese (bass), Dennis Dockstader (guest artist on xylophone and conga), Jeff Martin (chimes and roto tom), and Constantine himself playing mandolin, guitar and viola.

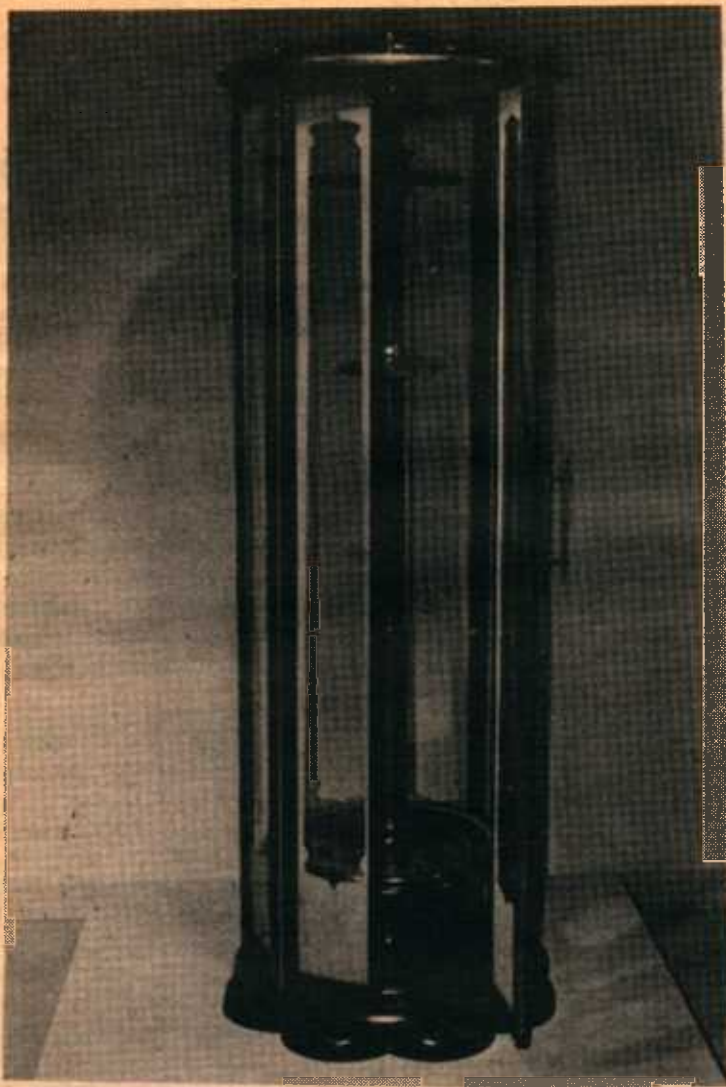
The only piece performed which was not Constantine's original composition was "Imagine" by John Lennon, notable for the compelling and flawless vocalizing of Mark Bailey, accompanied by Constantine on mandolin.

In a successful blend of east and west, ethereal melodies alternated with strong rhythmic statements, articulated by Constantine's electric guitar, the dynamic violin and bass of Frances Petrovic and Jerry Neese, and the sensitive keyboard work of John Browning. Joan Cochran's subtle flunta enhanced the whole.

Constantine's virtuoso performance drew the parts into a cohesive whole, and his bluegrass mandolin finale evoked the spontaneous handclapping accompaniment of the audience.

Later, over wine at the aftermath (aftermusic?) party, Constantine expressed his philosophy: "Music," he said, "is mankind's greatest blessing. Music is life. If you're creative, you don't have to worry about anything else."



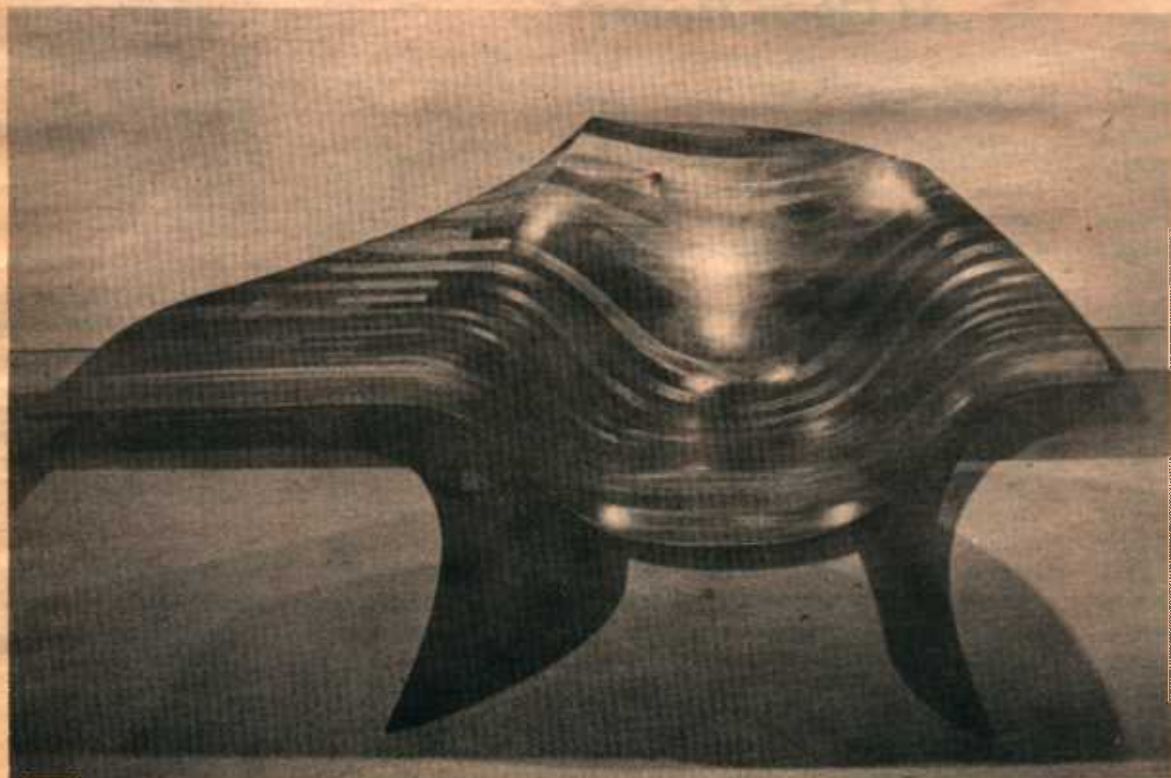


# *Woodworking Exhibit*

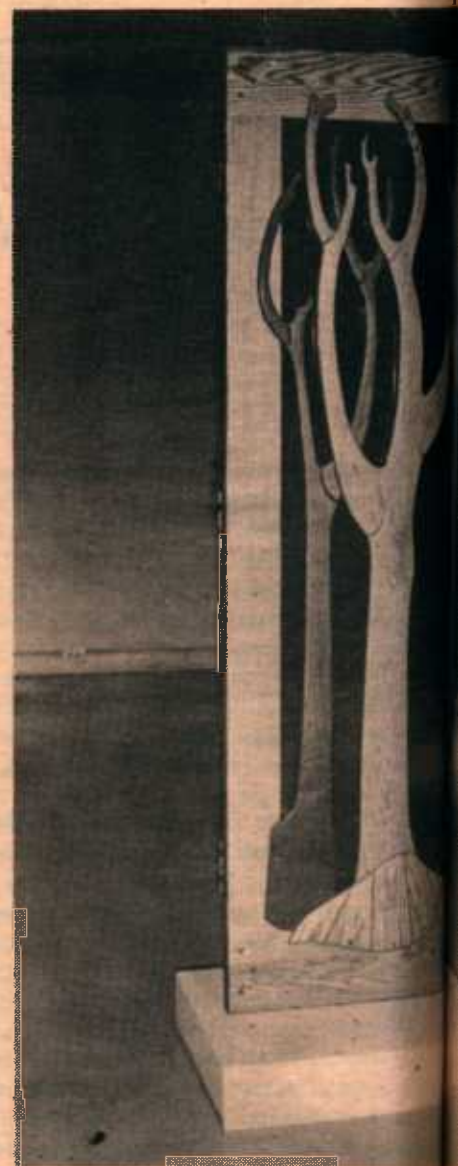
Photos by Randy Lanier

Charlotte Reid

*Gun Cabinet by Leo Doyle.*



*Modern wood sculpture.*



*Wood and glass door.*





Ken Reid cooking.

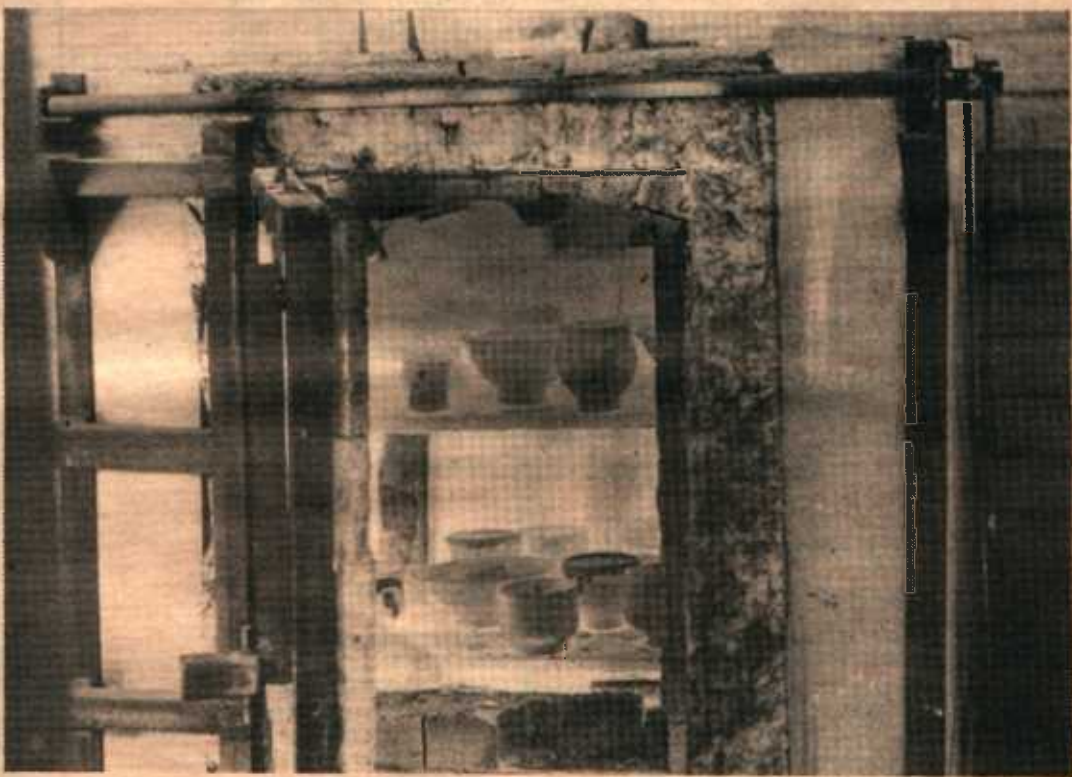


Ken Reid, wife and student examining finished Raku pieces.

# Raku

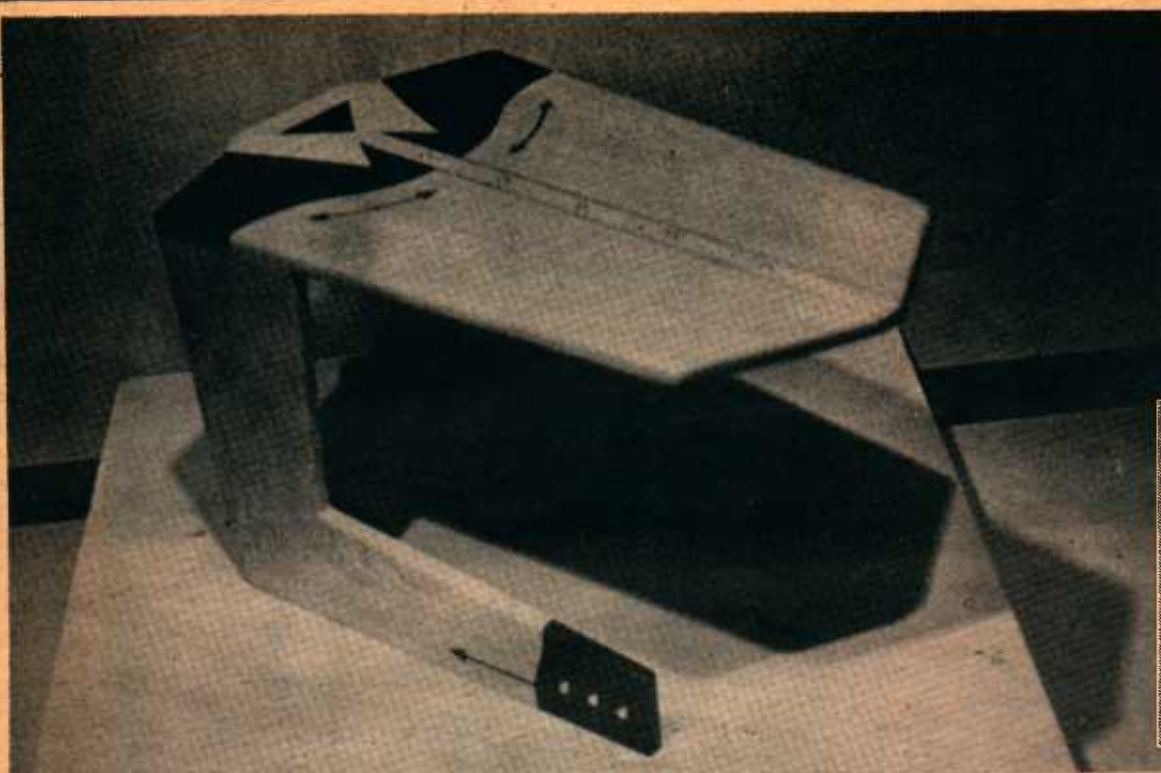
# Luncheon

Photos by Karen Newcombe



Glazed Raku pieces being fired in kiln.





A unique table design by Leo Doyle, featured in the woodworks display at the Art Gallery.

## Class Acts...



Have you heard about all the CLASS acts in the Inland Empire? The fine cultural organization bringing you today's attraction is just one of the arts agencies supported in part by the Inland Empire Cultural Foundation — CLASS (a Cultural League Advocating Support of the Arts in Society).

The friends and neighbors who bring you local programming in art, music, drama, dance and opera encourage you to continue to support cultural activities in the Inland Empire. Your attendance here shows you care about the finer things in life — those disciplines which create and perpetuate that elusive commodity we call "beauty."

The Inland Empire Cultural Foundation is a "united fund for the Arts" which raises money to support non-profit cultural organizations. CLASS grants help assure you of quality programming that strives to reach the greatest audience possible.

The performers and artists who bring you live shows and special exhibits throughout the year hope you'll enjoy all the arts in all their exciting forms.

*Next time, bring a friend and...*  
**Attend All The *Class* Acts You Can!**

Arrowhead Allied Arts Council • Ballet Folklorico de San Bernardino • Big County Chordsmen • Chaffey Community Art Association • Community Arts Productions • Fontana Mummers • Friends of Music • Museum of History and Art, Ontario • Pomona Valley Community Concert Association • Redlands Art Association • Redlands Community Music Association • Redlands Winter Concert Association • Riverside Ballet Theatre • Riverside Civic Ballet • Riverside Master Chorale • Riverside Opera Association • San Bernardino Civic Light Opera Association • San Bernardino Symphony Association • West End Opera Association • West End Symphony Association

INLAND EMPIRE CULTURAL FOUNDATION  
11161 Santo Antonio Drive, Suite J, Colton, California 92324 (714) 824-8240

## Keep Climbin'

by Rick Ergang

*Keep Climbin'* is a column dedicated to the disabled students on campus, and will profile those individuals who have demonstrated a consistent ability to overcome their handicaps while attending CSCSB. The PawPrint gratefully acknowledges the cooperation of Dr. Theron Pace and the staff of Services to Students With Disabilities for making this column possible.

One of the things that's neat about having a column like this is that I get the opportunity to meet and interview lots of interesting people. I truly enjoy the privilege of getting to know someone and having them share parts of their life with me.

This week I had such an opportunity. I had a chance to speak with Barbara Sovereign. Barbra is in the process of finishing her Masters of Science Degree in Counseling at the Cal state Campus. She is also employed by the school as a Psychological Counselor on the campus through the Services for Students with Disabilities Office. Barb is well qualified for this position, combining an excellent educational background with a special sensitivity for the disabled, resulting most probably from the fact that she, herself, is disabled. Barbara has been blind since age fourteen. Furthermore, one needs only to be in Barbara's presence for a couple of minutes to realize that she possesses those innate, somewhat intangible, and undefinable qualities that characterize the truly effective counselor.

I was fascinated by Ms. Sovereign's answer when I asked her if she found her blindness a problem in her counseling, as counseling frequently requires an awareness of visual cues that client might exhibit. Barbara explained to me that she compensates by listening. Listening possibly even more intently than the sighted therapist. For example, a counselor might see that a client's eyes are tearful as they describe an episode in their life, while Barbara might recognize their tearfulness through hearing a crack in their voice.

Another interesting challenge Barbara had was adapting the psychological testing materials used in her work to assess a client. She first had to change these materials to Braille in order for her to administer these tests.

Her advice to the disabled student presently attending or planning to attend Cal State San Bernardino: "Make your needs known to the Services for Students with Disabilities Office. The office is truly dedicated and responsive to the student. This school is an easy school for the disabled to attend, as the school wants to know how they can help." I asked Barbara if there was anything the school could do to improve their services for the disabled. Her suggestion is that the school label the room numbers in Braille, as this would greatly facilitate maneuvering around campus for the blind.

What does Barbara do for fun? She enjoys her two grandchildren, swimming, cooking, reading, and gardening. While I was speaking to Barb her new kitten was making her first exploration of some home grown roses arranged in a vase and sitting on a kitchen counter.

Yes, I was thoroughly delighted by our conversation, Barb. And I look forward to future conversations and the chance to know you more. I'm happy for you in that you're finishing your Masters and moving on, and saddened by the prospect of Cal State losing what I believe to be a truly valuable resource.





# Chinese Language and Cultural Studies

## CLCS OFFERS:

- \* Reasonable expenses \* Travel
- \* Concentrated study in Taiwan
- \* Extensive course listing
- \* Full university credit

ENTRY DATES: 4/1-6/12; 6/15-9/4; 9/21-12/18  
First Quarter: Tuition \$780; Housing \$200

## Accepting applications for all quarters

For Free Pamphlet and Information:

Chinese Language and Cultural Studies  
P.O. Box 15563, Long Beach, CA 90815  
Telephone: (213) 597-3361

## INTRAMURAL SCHEDULE

Monday, April 13	Co-Ed Softball Begins	2:30 & 4:00 p.m.	Fields
Tuesday, April 14	Entry Deadline and Meeting for Women's Softball	12:00 Noon	P.E. 122
Wednesday, April 15	Women's Softball Begins	4:00 p.m.	Fields
Thursday, April 16	Entry Deadline and Meeting for 10-Person softball	12:00 Noon	P.E. 122
Friday, April 17	Entry Deadline (no meeting) for Tennis Singles	1:00 p.m.	Bulletin Board
	10-Person softball Begins	1:00 p.m.	Fields

## COMING UP:

- Honda Volley ball Classic
- Coors Campusfest - Several Picnic Style Games & Prizes
- Coyote 500 Car Rallye - An Exciting Event
- Spring Festival - Archery, Ride n'Scoot, Pet Show

T.B.A.  
April 29  
May 7  
May 13

**who  
ever  
heard of  
a healthy  
coupon?**

Well, here it is. All you have to do is clip it out and send it in to get your free copy of HEALTHSTYLE. It's a booklet and self-quiz that helps sort out some of the confusion about health risks.

It tells you where you stand and the choices you can make for a healthier life. After all, **HEALTHY PEOPLE HELP THEMSELVES!**

For your free copy of HEALTHSTYLE, simply mail this coupon to: HEALTHSTYLE  
Box 47, Washington, D.C. 20044



Please send me ( ) free  
HEALTHSTYLE self-test(s)

Name \_\_\_\_\_  
Address \_\_\_\_\_ Apt. \_\_\_\_\_  
City \_\_\_\_\_  
State \_\_\_\_\_ Zip \_\_\_\_\_  
Mail to: HEALTHSTYLE, Box 47  
Washington, D.C. 20044

healthstyle

U.S. DEPARTMENT OF HEALTH AND HUMAN SERVICES, Public Health Service

# Blood Drive

The Health Center is sponsoring a Blood Drive on Thursday, April 23, from 10:00 to 3:00. It will be held in the waiting room of the Student Health Center. All students, faculty and staff members are invited to donate. Watch for further information in the next issue, April 22nd, Thanks.

## Marketing Club Invitation

You are cordially invited to a Special Premier Presentation of the CSCSB Advertising's. 1981-82 MARKET-ING PLAN TO INCREASE COORS PREMIUMS' SHARE OF THE COLLEGE MARKET to be entered in the 1981 American Advertising Federation's National Student Advertising Competition. Premier Date: April 16, 1981 at 5:00 p.m. in the Lower Commons, California State College, San Bernardino. Please join us!

## MANAGEMENT

# GOT THE GUTS?



**We've  
got  
the  
goal.**

You've got to be tough to play our game. But the goal is well worth it — a rewarding career in retail management that pays off in competitive salaries, sizeable bonuses and excellent benefits.

Our game is the retail shoe business. We're pretty good at it and play it to win. That's why Fayva is one of the nation's largest and most successful shoe retailers and why we can offer ambitious men and women a real opportunity for a professional management career.

If you're willing to work hard for fast success you can go from trainee to assistant manager in only 8 weeks and then to Store Manager in 9-12 months more. With our growth rate, it won't take long for you to go even higher if you prove to be the kind of pro that has helped make Fayva a top team in the industry.

**Fayva Representative  
will be on campus**

**Thursday, April 23rd**

**Contact your College Placement  
Office for appointment.**

**FAYVA**

**555 Turnpike Street**

**Canton, Massachusetts 02021**

**Attention: Field Employment Manager**

**FAYVA**

A DIFFERENT KIND OF SHOE STORE

Equal Opportunity Employer M/F



# Adult College Opportunity Program Offerings

During the Spring quarter of 1981 the Adult College Opportunity Program, directed by Dr. Lorelee MacPike (English), is offering a series of seminars for adult students. The seminars are scheduled as follows:

- April 15 Patterns of Adult Development: learn about mid-life passages.
- April 22 Time management: How to get more out of your time and how to plan your activities so that you can say "no."
- April 29 Stress Management: A definition of stress and its causes, plus some exercises to help you reduce stress.
- May 6 Interest Testing: See me in advance for the Strong-Campbell interest test (by April 8); Dr. Martha Kazlo will discuss the results of the test.
- Myers-Briggs Type Inventory: find out what your personality type is, and learn how type and interests/careers are related.
- Learning Styles Inventory: a short test to help you discover what your learning style is, followed by a discussion of how to apply the test results to your classes and your choice of career.
- May 27 Assertiveness: Learn how to let others know what you want without angering or alienating them.

## Campus Paperback Bestsellers

1. **The Official Preppy Handbook**, edited by Lisa Bimbach. (Workman, \$3.95.) Making the grade: humor.
2. **Princess Daisy**, by Judith Krantz. (Bantam, \$3.95.) Woman's rise to international glamour set: fiction.
3. **The Brethren**, by Bob Woodward & Scott Armstrong. (Avon, \$3.50.) Behind-the-scenes at the Supreme Court.
4. **Free to Choose**, by Milton & Rose Friedman. (Avon, \$2.95.) How government affects the economy.
5. **Godel, Escher, Bach**, by Douglas R. Hofstadter. (Vintage, \$8.95.) Computer scientist's theory of reality.
6. **The Devil's Alternative**, by Frederick Forsyth. (Bantam, \$3.50.) Imminent global disaster: fiction.
7. **The Complete Scarsdale Medical Diet**, by Herman Tarnower, MD and Samm S. Baker. (Bantam, \$2.95.)
8. **What Color is Your Parachute?**, by Richard N. Bolles. (Ten Speed Press, \$5.95.) Job and career guide.
9. **The Next Whole Earth Catalogue**, edited by Stewart Brand. (Point/Random House, \$12.50.)
10. **Still Life with Woodpecker**, by Tom Robbins. (Bantam, \$6.95.) A sort of love story: fiction.

Compiled by *The Chronicle of Higher Education* from information supplied by college stores throughout the country. April 6, 1981

## Masters at Night

Applications are now being accepted for the evening program in the master of arts in psychology at Cal State, San Bernardino for the 1981-82 academic year.

Only 20 students are admitted to this M.A. program each year and no admissions are accepted after the start of the year's cycle. Prospective students should contact Dr. Robert Cramer, lecturer in psychology and

coordinator of the evening M.A. program, at 887-7266 for admissions requirements.

Dr. Cramer said all courses required for the M.A. degree in psychology will meet after 4 p.m. in an effort to accommodate working students. The late-day classes are the result of growing demand from students who find it economically necessary to work during the day and attend classes at night.

## Scholarship Research Available

The National Scholarship Research Service, a private organization designed to locate scholarships, fellowships, grants and loans for college students, offers its services to students who need financial aid in order to meet the cost of a college education. For \$35.00 NRS will cross reference each student's personal information with approximately 50,000 scholarship sources and provide a computer match-up listing of all the sources available to that individual. Write them at National Scholarship Research Service, P.O. Box 2516, San Rafael, CA. 94912 for more information.

## Reading Conference To Be Held

"Changing Dimensions in Reading" is the subject of the Fifth Annual Reading Conference to be held Saturday, April 25, at Cal State.

This day-long event attracts participants from all over Southern California and features local area and out-of-state speakers. Nearly 400 are expected to attend.

The reading conference provides an up-date of a crucial area which is undergoing rapid change. It is designed to provide teachers of all content areas and grade levels, aides, parents, specialists and administrators with relevant information.

Dr. Brenda U. Beal, Humboldt State University, will deliver the keynote speech, "The Three Ingredients."

The conference is presented by the Cal State School of Education, the Teacher Corps, the San Bernardino County Schools and the Office of Continuing Education.

The registration fee is \$37 for one unit of credit. Non-credit is \$25. The fee includes luncheon, refreshments and materials. Registration begins at 8 a.m. in the Commons patio.

Registration is requested by April 17, and can be made by calling the Office of Continuing Education at 887-7527. After that date, those interested may call that office to see if there is space available.

GET  
A LOAD  
OF THIS!

Degree



SALE

At

The Bookstore

April 13-24

Art Books



## CLASSIFIEDS

### SERVICES

Experienced typist will be glad to type your college papers, theses, resumes, etc., accurately and on time. Call 886-2509 between 10 and 2, 886-6262 other times. Mrs. Smith

### TYPING:

Experienced typist. Fast, accurate and neat. I.B.M. Selectric. 682-5398 Mrs. Vincent.

TYPING: Need typing done for school? Call Carla at 793-7539.

### FOR SALE

AM. FM Cassette Stereo, auto reverse, digital station display, digital clock, pushbutton (5am-5pm), station search and exact instant tuning. System is new. Paid \$318, sell for \$225. Phone 687-6637, ask for Tom.

TRUCK FOR SALE 1977 Chevy, low mileage, like new, many extras \$1000. Call 337-9234.

FOR SALE: Brand new, top of the line, double winged sunroof, built-in interior light runs through the middle. Paid \$200, asking \$150 or offer. 887-5775 ask for Steve or 887-7419 leave message

75 Buick Skylark. V-6, 4-speed, custom vinyl top, mag wheels. Call Larry. 887-1138.

### MISC.

NEED RIDE: Will share expenses. Live near Norton AFB, have classes M-Th 9-3. Bus ride gets longer every day. Please call 862-6310 or leave message for Maureen at 887-7494.

ROOMMATE NEEDED to share mountain home, reasonable rent, reply to P.O. Box 1253, Crestline, CA 92425.

Roommate Wanted: to share new 2 bedroom apt., Security gates, pool. \$150 phone 886-7733

Professional Dance: teacher offering lessons in jazz and tap dancing. Opportunity for Theatre Arts major. phone 793-2940

Volunteers needed for open house. Potential entrants and judges for chili cook-off and pie bake-off should contact Dr. Fred Newton at the Psychology Department. Would-be tour guides and information hosts should contact Mary Williams at the School of Social and Behavioral Sciences.

## I.D.'s

Driver's license quality photo I.D. cards while you wait. No proof of birth required. Any state. Also available: employee & photographer passes, lamination, passport photos, business cards, rubber stamps, singing telegrams.

### Anthony's

2054 W. La Habra Blvd.  
La Habra  
(Southwest corner of Beach Blvd.)

213-691-0909

SAN DIEGO 714-277-1886  
RIVERSIDE 714-687-0282

## Draft News...

cont'd from front page.

letter should be sent to Selective Service stating that they are a member of the class in Wolman vs. U.S., now pending in the Court of Appeals for the District of Columbia, and that the SSAN will be provided when the case is settled.

## "Job Seeker's Success Kit" Available

A new "Job Seeker's Success Kit," designed to help graduates "sell" themselves into a new job easily, is now available from the Center for Career Development, Inc.

The Kit is an "Action Road Map" which enables job seekers to find the opportunities they want and then stand out from other candidates. The basic premise is that the applicant is "selling" himself of herself to a prospective employer.

Free information on the Kit, which sells for \$19.95, can be obtained by writing the Center for Career Development, Inc., 11383 Landan Lane, Ohio 45246. Orders may be placed with check or VISA and Master charge in the same way if credit card number and expiration date are included.

## Job Opportunities

The following jobs are available at the time the PauPrint goes to press and are off campus unless otherwise indicated. For more information, please contact the Career Planning and Placement Center, SS-116.

**CLERICAL POSITION:** Doctor's office needs a student to work 15-20 hrs/week, Monday through Friday. Must be accurate typist, be neat and be able to deal well with the public. Position pays \$3.35/hour. No. 813

**SALES & OFFICE WORK:** Company would like marketing or business major to answer phones and visit prospective customers. Hours would be Monday through Friday from 10-2 and Saturdays from 8 until noon. Salary is negotiable No. 806

**PRE SCHOOL TEACHER:** A student with 4-12 units of Child Development courses is needed to work Monday through Friday with children in Fontana. The position pays \$4.00/hour. No. 800

**BOOKKEEPER:** Student with some experience with bookkeeping, check balancing and some account work. salary depends on experience. No. 797

## Financial Aid Travesty

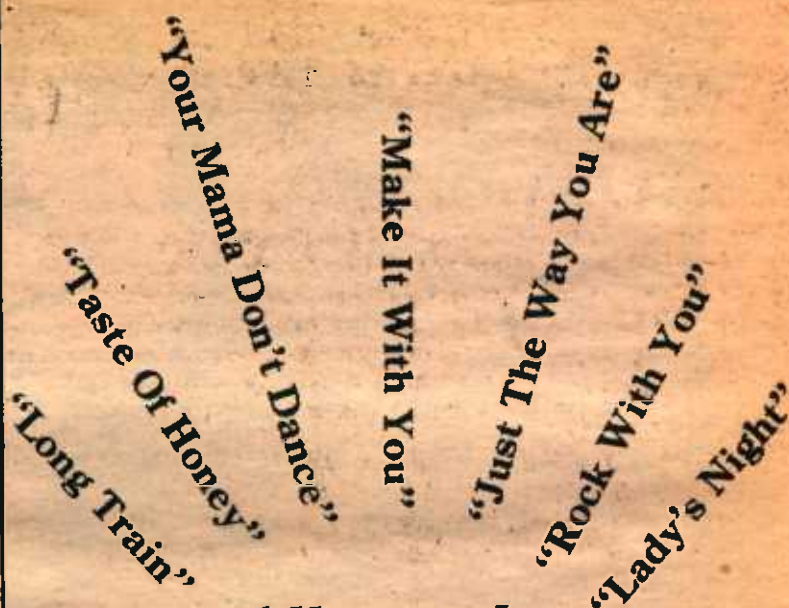
cont'd from page three.

Cost of Attendance formula to speed up the process. They are also advocating that Congress allocate a supplement appropriation of \$911 million for Pell Grants to maintain adequate funding at current maximum award levels. If this supplement is not provided, the maximum reward will be reduced from \$1,800 to as low as \$1,200. "Students should write to the Secretary of Education, Terrel Bell and to their Congressional representatives urging them to accept these recommendations," noted McFadden.

Also slated for significant changes is the Guaranteed Student Loan program (GSL). This program has grown dramatically in the past two years since the passage of the Middle Income Students Assistance Act. The GSL currently has no eligibility requirements and this is what government officials are currently scrutinizing. At this point in time, however, there is not any definite information regarding the size and extent of the fiscal and policy proposals. The Food Stamp and Social Security programs are also slated for reduction.

Recommendations for both programs are that students be either immediately eliminated or phased out over a four-year period.

Most of the education community is awaiting the March 10th announcement by President Reagan when he will provide more specifics for the programs and identify specific cuts. "Right now we are hearing different rumours every day. The only thing that everyone agrees upon is that the picture is looking grim," concluded Brownsey.

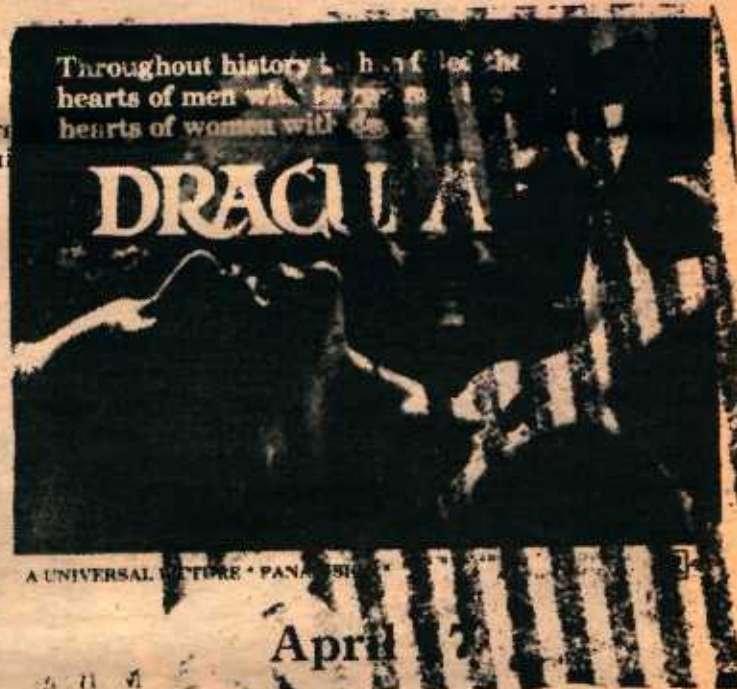


## Allamatch

Dance Thursday, 9 p.m.

"Come Dance"

Sponsored by A.S.



Sponsored by A.S.

## Student Talent Show

"A Night On Broadway"

Auditions

May 6, 1981

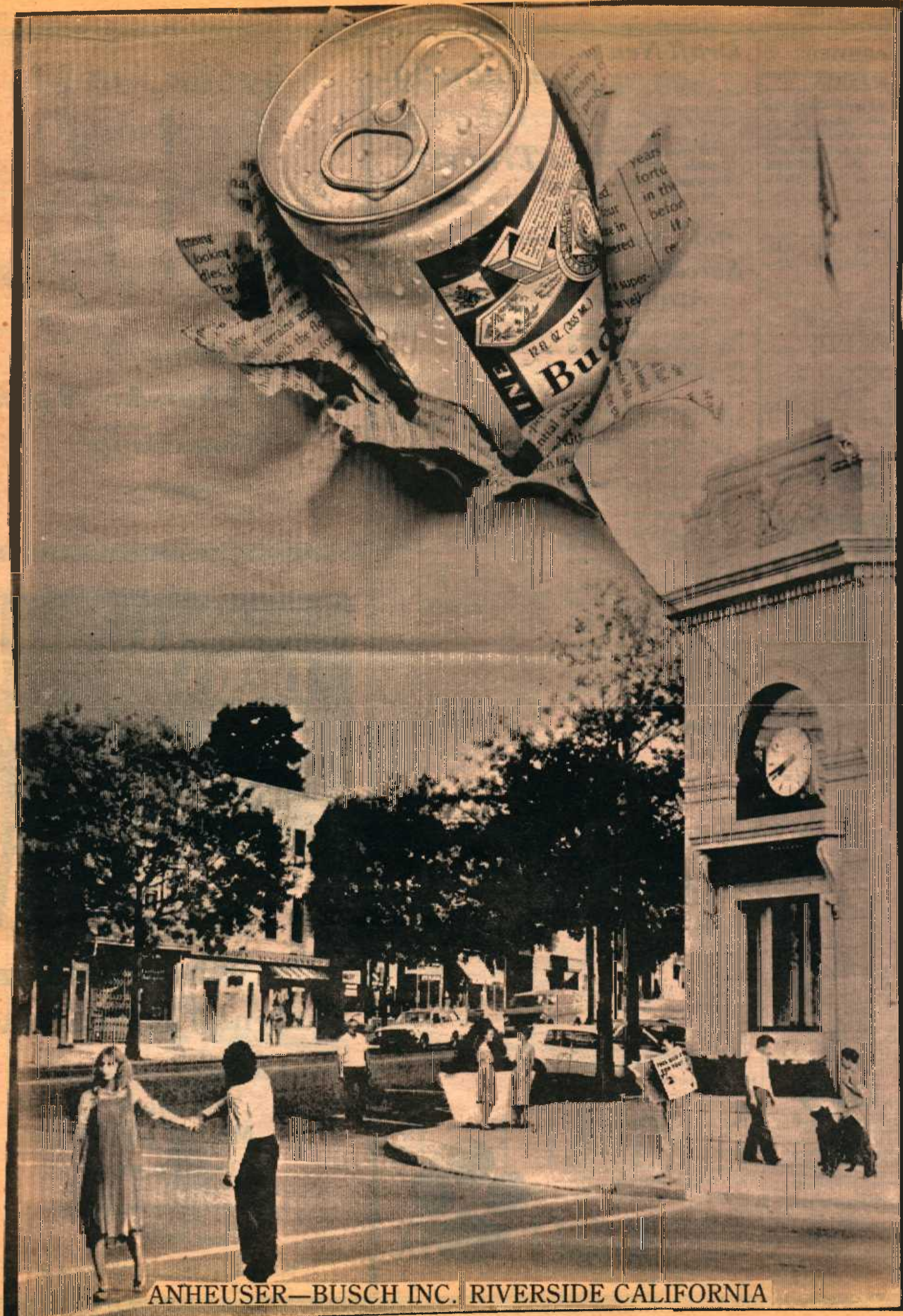
6-10 p.m.

For Further information

call 887-7797

Sponsored by Uni Phi and A.S.





ANHEUSER-BUSCH INC. RIVERSIDE CALIFORNIA