

California State University, San Bernardino

CSUSB ScholarWorks

CSUSB Faculty Senate records

Arthur E. Nelson University Archives

2020

Student Opinion of Teaching Effectiveness (SOTE)- College of Arts & Letters Fall 2020 Term Summary (2020)

CSUSB Faculty Senate

Follow this and additional works at: <https://scholarworks.lib.csusb.edu/facultysenate>

Recommended Citation

CSUSB Faculty Senate, "Student Opinion of Teaching Effectiveness (SOTE)- College of Arts & Letters Fall 2020 Term Summary (2020)" (2020). *CSUSB Faculty Senate records*. 301.
<https://scholarworks.lib.csusb.edu/facultysenate/301>

This Report is brought to you for free and open access by the Arthur E. Nelson University Archives at CSUSB ScholarWorks. It has been accepted for inclusion in CSUSB Faculty Senate records by an authorized administrator of CSUSB ScholarWorks. For more information, please contact scholarworks@csusb.edu.

Student Opinion of Teaching Effectiveness (SOTE)- College of Arts & Letters Winter 2020 Term Summary

1. Rate your interest in the subject matter of this course before you took the class.

	Response by Course Level			
	Lower	Upper	Grad	Total
Very High (1)	21.4%	35.7%	50.0%	28.1%
High (2)	24.6%	25.2%	25.0%	24.9%
Moderately High (3)	22.2%	21.1%	9.2%	21.6%
Moderately Low (4)	13.1%	7.8%	7.9%	10.7%
Low (5)	13.1%	7.1%	5.3%	10.3%
Very Low (6)	5.6%	3.1%	2.6%	4.5%
Mean	2.9	2.3	2.0	2.6
Median	3	2	2	2
Count	3119	2571	76	5766

2. How many class sessions did you attend?

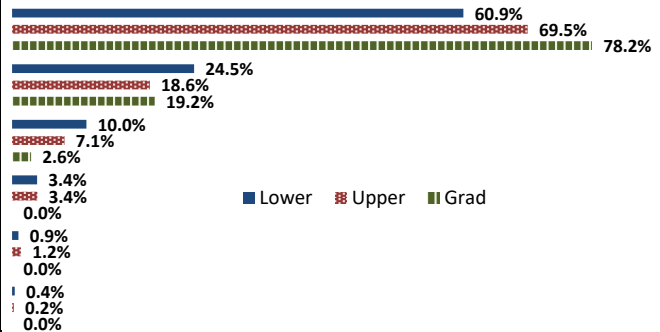
	Response by Course Level			
	Lower	Upper	Grad	Total
All (1)	49.2%	49.5%	38.2%	49.2%
Almost All (2)	47.0%	47.6%	60.5%	47.4%
More than Half (3)	3.4%	2.7%	1.3%	3.0%
Less than Half (4)	0.4%	0.3%	0.0%	0.3%
Mean	1.5	1.5	1.6	1.5
Median	2	2	2	2
Count	3118	2559	76	5753

3. Why did you take this course? Choose all that apply.

	Response by Course Level			
	Lower	Upper	Grad	Total
3a. The course fulfills a general education requirement.	75.9%	45.1%	27.2%	61.5%
3b. The course fulfills a requirement in my major.	19.9%	60.5%	76.5%	38.7%
3c. I have enjoyed the professor's class(es) in the past.	4.5%	11.4%	27.2%	7.9%
3d. The course will improve job/career opportunities.	13.6%	16.5%	30.9%	15.1%
3e. The course sounded interesting to me.	20.8%	30.3%	48.2%	25.4%

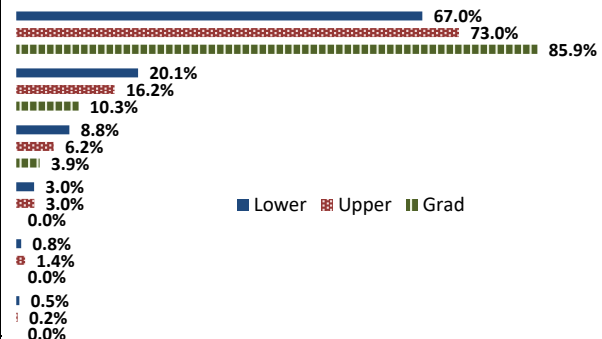
4. How would you rate the overall quality of instruction in this course?

	Response by Course Level			
	Lower	Upper	Grad	Total
Excellent (6)	60.9%	69.5%	78.2%	64.9%
Very Good (5)	24.5%	18.6%	19.2%	21.8%
Good (4)	10.0%	7.1%	2.6%	8.6%
Fair (3)	3.4%	3.4%	0.0%	3.4%
Poor (2)	0.9%	1.2%	0.0%	1.0%
Unsatisfactory (1)	0.4%	0.2%	0.0%	0.3%
Mean	5.4	5.5	5.8	5.5
Median	6	6	6	6
Count	3134	2575	78	5787



5. How would you rate your professor's specific contribution to you learning in this course?

	Response by Course Level			
	Lower	Upper	Grad	Total
Excellent (6)	67.0%	73.0%	85.9%	69.9%
Very Good (5)	20.1%	16.2%	10.3%	18.2%
Good (4)	8.8%	6.2%	3.9%	7.5%
Fair (3)	3.0%	3.0%	0.0%	2.9%
Poor (2)	0.8%	1.4%	0.0%	1.1%
Unsatisfactory (1)	0.5%	0.2%	0.0%	0.4%
Mean	5.5	5.6	5.8	5.5
Median	6	6	6	6
Count	3086	2561	78	5725



Student Opinion of Teaching Effectiveness (SOTE)- College of Business and Public Administration Winter 2020 Term Summary

1. Rate your interest in the subject matter of this course before you took the class.

	Response by Course Level			
	Lower	Upper	Grad	Total
Very High (1)	27.3%	33.6%	38.3%	33.0%
High (2)	27.9%	28.0%	26.3%	27.8%
Moderately High (3)	21.3%	18.9%	19.3%	19.4%
Moderately Low (4)	11.0%	8.5%	9.3%	9.1%
Low (5)	9.3%	8.0%	4.5%	7.8%
Very Low (6)	3.2%	3.0%	2.3%	2.9%
Mean	2.6	2.4	2.2	2.4
Median	2	2	2	2
Count	825	3093	517	4435

2. How many class sessions did you attend?

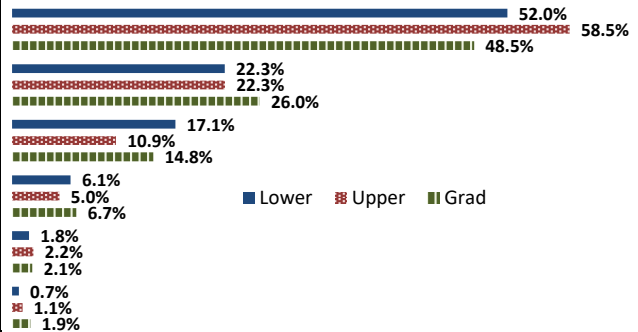
	Response by Course Level			
	Lower	Upper	Grad	Total
All (1)	60.2%	61.3%	73.8%	62.5%
Almost All (2)	36.6%	35.8%	23.2%	34.5%
More than Half (3)	2.8%	2.3%	1.8%	2.3%
Less than Half (4)	0.4%	0.7%	1.2%	0.7%
Mean	1.4	1.4	1.3	1.4
Median	1	1	1	1
Count	825	3090	512	4427

3. Why did you take this course? Choose all that apply.

	Response by Course Level			
	Lower	Upper	Grad	Total
3a. The course fulfills a general education requirement.	38.6%	26.5%	40.2%	30.5%
3b. The course fulfills a requirement in my major.	48.8%	75.6%	73.6%	69.8%
3c. I have enjoyed the professor's class(es) in the past.	1.3%	6.8%	8.5%	5.8%
3d. The course will improve job/career opportunities.	17.8%	25.3%	33.0%	24.6%
3e. The course sounded interesting to me.	17.4%	17.3%	19.6%	17.6%

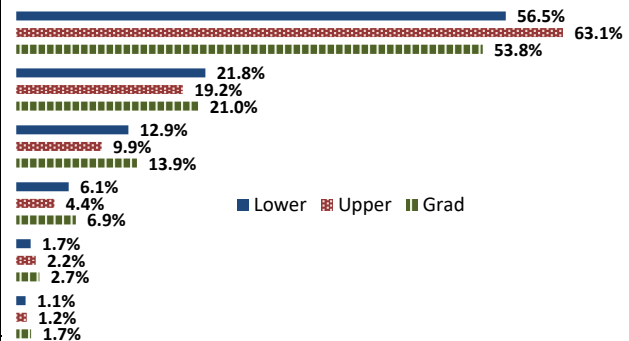
4. How would you rate the overall quality of instruction in this course?

	Response by Course Level			
	Lower	Upper	Grad	Total
Excellent (6)	52.0%	58.5%	48.5%	56.1%
Very Good (5)	22.3%	22.3%	26.0%	22.8%
Good (4)	17.1%	10.9%	14.8%	12.5%
Fair (3)	6.1%	5.0%	6.7%	5.4%
Poor (2)	1.8%	2.2%	2.1%	2.1%
Unsatisfactory (1)	0.7%	1.1%	1.9%	1.1%
Mean	5.1	5.3	5.1	5.2
Median	6	6	5	6
Count	847	3130	520	4497



5. How would you rate your professor's specific contribution to you learning in this course?

	Response by Course Level			
	Lower	Upper	Grad	Total
Excellent (6)	56.5%	63.1%	53.8%	60.8%
Very Good (5)	21.8%	19.2%	21.0%	19.9%
Good (4)	12.9%	9.9%	13.9%	10.9%
Fair (3)	6.1%	4.4%	6.9%	5.0%
Poor (2)	1.7%	2.2%	2.7%	2.2%
Unsatisfactory (1)	1.1%	1.2%	1.7%	1.2%
Mean	5.2	5.3	5.1	5.3
Median	6	6	6	6
Count	843	3086	524	4453



Student Opinion of Teaching Effectiveness (SOTE)- College of Education Winter 2020 Term Summary

1. Rate your interest in the subject matter of this course before you took the class.

	Response by Course Level			
	Lower	Upper	Grad	Total
Very High (1)	42.1%	38.5%	51.8%	45.6%
High (2)	24.6%	29.0%	24.3%	26.3%
Moderately High (3)	22.8%	17.9%	14.4%	16.3%
Moderately Low (4)	7.0%	6.8%	4.5%	5.6%
Low (5)	1.8%	6.2%	3.5%	4.5%
Very Low (6)	1.8%	1.8%	1.7%	1.7%
Mean	2.1	2.2	1.9	2.0
Median	2	2	1	2
Count	57	504	606	1167

2. How many class sessions did you attend?

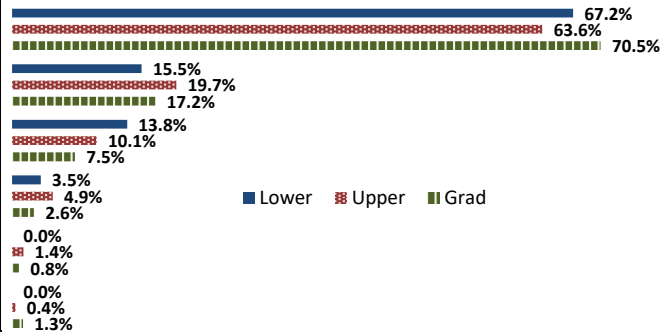
	Response by Course Level			
	Lower	Upper	Grad	Total
All (1)	70.2%	71.6%	81.6%	76.8%
Almost All (2)	29.8%	27.4%	17.9%	22.6%
More than Half (3)	0.0%	0.8%	0.3%	0.5%
Less than Half (4)	0.0%	0.2%	0.2%	0.2%
Mean	1.3	1.3	1.2	1.2
Median	1	1	1	1
Count	57	496	604	1157

3. Why did you take this course? Choose all that apply.

	Response by Course Level			
	Lower	Upper	Grad	Total
3a. The course fulfills a general education requirement.	25.0%	31.0%	27.2%	28.8%
3b. The course fulfills a requirement in my major.	71.7%	64.6%	81.9%	73.8%
3c. I have enjoyed the professor's class(es) in the past.	0.0%	8.1%	23.3%	15.5%
3d. The course will improve job/career opportunities.	33.3%	29.4%	32.3%	31.1%
3e. The course sounded interesting to me.	15.0%	9.7%	15.6%	13.0%

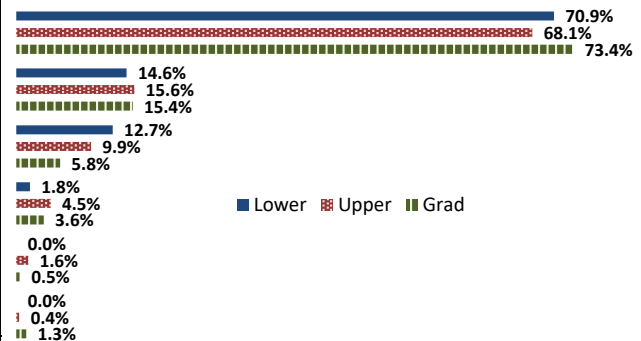
4. How would you rate the overall quality of instruction in this course?

	Response by Course Level			
	Lower	Upper	Grad	Total
Excellent (6)	67.2%	63.6%	70.5%	67.3%
Very Good (5)	15.5%	19.7%	17.2%	18.2%
Good (4)	13.8%	10.1%	7.5%	9.0%
Fair (3)	3.5%	4.9%	2.6%	3.6%
Poor (2)	0.0%	1.4%	0.8%	1.0%
Unsatisfactory (1)	0.0%	0.4%	1.3%	0.9%
Mean	5.5	5.4	5.5	5.4
Median	6	6	6	6
Count	58	513	611	1182



5. How would you rate your professor's specific contribution to you learning in this course?

	Response by Course Level			
	Lower	Upper	Grad	Total
Excellent (6)	70.9%	68.1%	73.4%	71.0%
Very Good (5)	14.6%	15.6%	15.4%	15.4%
Good (4)	12.7%	9.9%	5.8%	7.9%
Fair (3)	1.8%	4.5%	3.6%	3.9%
Poor (2)	0.0%	1.6%	0.5%	0.9%
Unsatisfactory (1)	0.0%	0.4%	1.3%	0.9%
Mean	5.5	5.4	5.5	5.5
Median	6	6	6	6
Count	55	507	606	1168



Student Opinion of Teaching Effectiveness (SOTE)- College of Natural Sciences Winter 2020 Term Summary

1. Rate your interest in the subject matter of this course before you took the class.

	Response by Course Level			
	Lower	Upper	Grad	Total
Very High (1)	20.2%	35.0%	46.1%	25.8%
High (2)	25.4%	28.7%	22.7%	26.5%
Moderately High (3)	22.0%	20.5%	20.1%	21.5%
Moderately Low (4)	12.6%	7.3%	6.5%	10.6%
Low (5)	13.4%	6.1%	2.0%	10.7%
Very Low (6)	6.5%	2.4%	2.6%	5.0%
Mean	2.9	2.3	2.0	2.7
Median	3	2	2	2
Count	5763	3151	154	9068

2. How many class sessions did you attend?

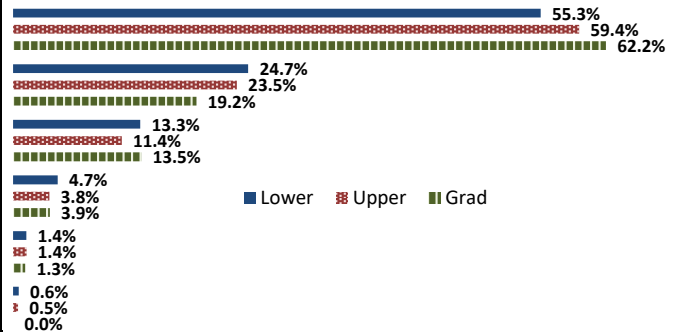
	Response by Course Level			
	Lower	Upper	Grad	Total
All (1)	68.0%	65.2%	74.8%	67.1%
Almost All (2)	29.6%	32.6%	23.2%	30.5%
More than Half (3)	2.0%	1.9%	0.7%	1.9%
Less than Half (4)	0.5%	0.3%	1.3%	0.4%
Mean	1.3	1.4	1.3	1.4
Median	1	1	1	1
Count	5738	3137	155	9030

3. Why did you take this course? Choose all that apply.

	Response by Course Level			
	Lower	Upper	Grad	Total
3a. The course fulfills a general education requirement.	58.1%	21.4%	29.8%	44.7%
3b. The course fulfills a requirement in my major.	49.6%	80.2%	82.9%	60.9%
3c. I have enjoyed the professor's class(es) in the past.	2.5%	10.8%	26.6%	5.8%
3d. The course will improve job/career opportunities.	10.1%	19.2%	26.6%	13.5%
3e. The course sounded interesting to me.	10.8%	16.5%	27.2%	13.1%

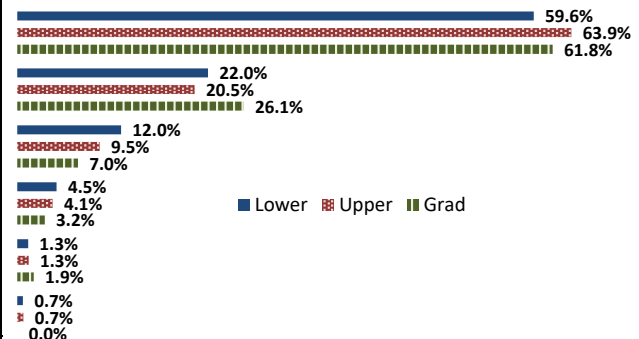
4. How would you rate the overall quality of instruction in this course?

	Response by Course Level			
	Lower	Upper	Grad	Total
Excellent (6)	55.3%	59.4%	62.2%	56.9%
Very Good (5)	24.7%	23.5%	19.2%	24.2%
Good (4)	13.3%	11.4%	13.5%	12.7%
Fair (3)	4.7%	3.8%	3.9%	4.4%
Poor (2)	1.4%	1.4%	1.3%	1.4%
Unsatisfactory (1)	0.6%	0.5%	0.0%	0.6%
Mean	5.3	5.3	5.4	5.3
Median	6	6	6	6
Count	5804	3195	156	9155



5. How would you rate your professor's specific contribution to your learning in this course?

	Response by Course Level			
	Lower	Upper	Grad	Total
Excellent (6)	59.6%	63.9%	61.8%	61.1%
Very Good (5)	22.0%	20.5%	26.1%	21.5%
Good (4)	12.0%	9.5%	7.0%	11.0%
Fair (3)	4.5%	4.1%	3.2%	4.4%
Poor (2)	1.3%	1.3%	1.9%	1.3%
Unsatisfactory (1)	0.7%	0.7%	0.0%	0.7%
Mean	5.3	5.4	5.4	5.3
Median	6	6	6	6
Count	5774	3200	157	9131



Student Opinion of Teaching Effectiveness (SOTE)- College of Social and Behavioral Sciences Winter 2020 Term Summary

1. Rate your interest in the subject matter of this course before you took the class.

	Response by Course Level			
	Lower	Upper	Grad	Total
Very High (1)	23.5%	33.1%	51.3%	30.7%
High (2)	25.9%	27.6%	25.4%	27.0%
Moderately High (3)	23.4%	19.1%	12.8%	20.3%
Moderately Low (4)	10.6%	9.6%	6.0%	9.8%
Low (5)	11.4%	7.2%	3.7%	8.5%
Very Low (6)	5.1%	3.2%	0.9%	3.8%
Mean	2.8	2.4	1.9	2.5
Median	3	2	1	2
Count	2757	5088	351	8196

2. How many class sessions did you attend?

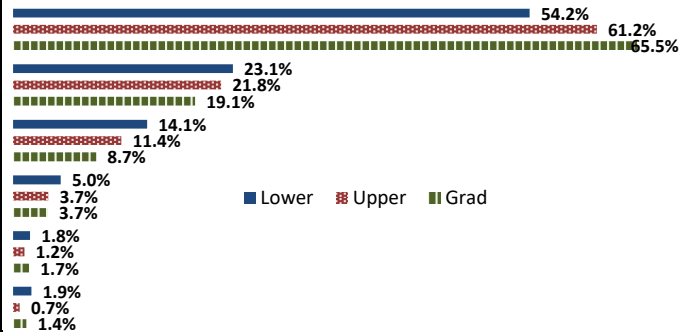
	Response by Course Level			
	Lower	Upper	Grad	Total
All (1)	49.8%	50.7%	59.3%	50.8%
Almost All (2)	44.4%	45.2%	40.1%	44.7%
More than Half (3)	4.7%	3.5%	0.6%	3.8%
Less than Half (4)	1.1%	0.6%	0.0%	0.7%
Mean	1.6	1.5	1.4	1.5
Median	2	1	1	1
Count	2751	5065	349	8165

3. Why did you take this course? Choose all that apply.

	Response by Course Level			
	Lower	Upper	Grad	Total
3a. The course fulfills a general education requirement.	68.9%	34.5%	28.2%	45.6%
3b. The course fulfills a requirement in my major.	32.8%	64.4%	74.8%	54.4%
3c. I have enjoyed the professor's class(es) in the past.	2.8%	10.8%	21.6%	8.6%
3d. The course will improve job/career opportunities.	8.6%	17.1%	30.0%	14.8%
3e. The course sounded interesting to me.	20.0%	30.1%	25.5%	26.5%

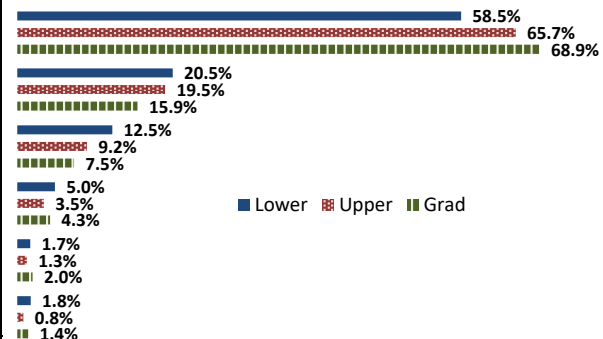
4. How would you rate the overall quality of instruction in this course?

	Response by Course Level			
	Lower	Upper	Grad	Total
Excellent (6)	54.2%	61.2%	65.5%	59.0%
Very Good (5)	23.1%	21.8%	19.1%	22.1%
Good (4)	14.1%	11.4%	8.7%	12.2%
Fair (3)	5.0%	3.7%	3.7%	4.1%
Poor (2)	1.8%	1.2%	1.7%	1.4%
Unsatisfactory (1)	1.9%	0.7%	1.4%	1.2%
Mean	5.2	5.4	5.4	5.3
Median	6	6	6	6
Count	2798	5114	356	8268



5. How would you rate your professor's specific contribution to you learning in this course?

	Response by Course Level			
	Lower	Upper	Grad	Total
Excellent (6)	58.5%	65.7%	68.9%	63.4%
Very Good (5)	20.5%	19.5%	15.9%	19.7%
Good (4)	12.5%	9.2%	7.5%	10.3%
Fair (3)	5.0%	3.5%	4.3%	4.0%
Poor (2)	1.7%	1.3%	2.0%	1.5%
Unsatisfactory (1)	1.8%	0.8%	1.4%	1.2%
Mean	5.2	5.4	5.4	5.4
Median	6	6	6	6
Count	2753	5044	347	8144



Student Opinion of Teaching Effectiveness (SOTE)- College of University Studies Winter 2020 Term Summary

1. Rate your interest in the subject matter of this course before you took the class.

	Response by Course Level			
	Lower	Upper	Grad	Total
Very High (1)	30.0%	8.3%	0.0%	18.2%
High (2)	20.0%	16.7%	0.0%	18.2%
Moderately High (3)	20.0%	8.3%	0.0%	13.6%
Moderately Low (4)	20.0%	33.3%	0.0%	27.3%
Low (5)	10.0%	16.7%	0.0%	13.6%
Very Low (6)	0.0%	16.7%	0.0%	9.1%
Mean	2.6	3.8	.	3.3
Median	3	4	.	4
Count	10	12	0	22

2. How many class sessions did you attend?

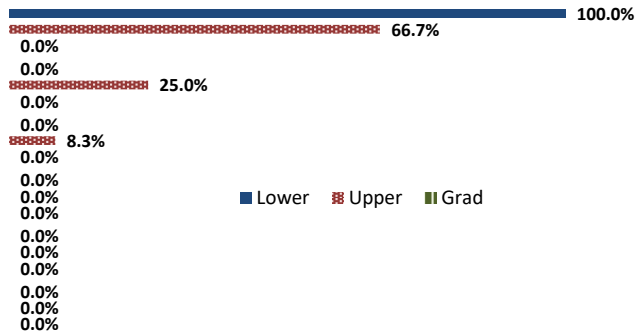
	Response by Course Level			
	Lower	Upper	Grad	Total
All (1)	10.0%	81.8%	0.0%	47.6%
Almost All (2)	90.0%	18.2%	0.0%	52.4%
More than Half (3)	0.0%	0.0%	0.0%	0.0%
Less than Half (4)	0.0%	0.0%	0.0%	0.0%
Mean	1.9	1.2	.	1.5
Median	2	1	.	2
Count	10	11	0	21

3. Why did you take this course? Choose all that apply.

	Response by Course Level			
	Lower	Upper	Grad	Total
3a. The course fulfills a general education requirement.	18.2%	92.3%	0.0%	58.3%
3b. The course fulfills a requirement in my major.	18.2%	0.0%	0.0%	8.3%
3c. I have enjoyed the professor's class(es) in the past.	0.0%	0.0%	0.0%	0.0%
3d. The course will improve job/career opportunities.	36.4%	7.7%	0.0%	20.8%
3e. The course sounded interesting to me.	9.1%	7.7%	0.0%	8.3%

4. How would you rate the overall quality of instruction in this course?

	Response by Course Level			
	Lower	Upper	Grad	Total
Excellent (6)	100.0%	66.7%	0.0%	81.8%
Very Good (5)	0.0%	25.0%	0.0%	13.6%
Good (4)	0.0%	8.3%	0.0%	4.6%
Fair (3)	0.0%	0.0%	0.0%	0.0%
Poor (2)	0.0%	0.0%	0.0%	0.0%
Unsatisfactory (1)	0.0%	0.0%	0.0%	0.0%
Mean	6.0	5.6	.	5.8
Median	6	6	.	6
Count	10	12	0	22



5. How would you rate your professor's specific contribution to you learning in this course?

	Response by Course Level			
	Lower	Upper	Grad	Total
Excellent (6)	88.9%	83.3%	0.0%	85.7%
Very Good (5)	11.1%	16.7%	0.0%	14.3%
Good (4)	0.0%	0.0%	0.0%	0.0%
Fair (3)	0.0%	0.0%	0.0%	0.0%
Poor (2)	0.0%	0.0%	0.0%	0.0%
Unsatisfactory (1)	0.0%	0.0%	0.0%	0.0%
Mean	5.9	5.8	.	5.9
Median	6	6	.	6
Count	9	12	0	21

