

California State University, San Bernardino

**CSUSB ScholarWorks**

---

CSUSB Faculty Senate records

Arthur E. Nelson University Archives

---

2020

## **Student Opinion of Teaching Effectiveness (SOTE)- College of Arts & Letters Spring 2020 Term Summary (2020)**

CSUSB Faculty Senate

Follow this and additional works at: <https://scholarworks.lib.csusb.edu/facultysenate>

---

### **Recommended Citation**

CSUSB Faculty Senate, "Student Opinion of Teaching Effectiveness (SOTE)- College of Arts & Letters Spring 2020 Term Summary (2020)" (2020). *CSUSB Faculty Senate records*. 300.  
<https://scholarworks.lib.csusb.edu/facultysenate/300>

This Report is brought to you for free and open access by the Arthur E. Nelson University Archives at CSUSB ScholarWorks. It has been accepted for inclusion in CSUSB Faculty Senate records by an authorized administrator of CSUSB ScholarWorks. For more information, please contact [scholarworks@csusb.edu](mailto:scholarworks@csusb.edu).

## Student Opinion of Teaching Effectiveness (SOTE)- College of Arts & Letters Spring 2020 Term Summary

### 1. Rate your interest in the subject matter of this course before you took the class.

	Response by Course Level			
	Lower	Upper	Grad	Total
Very High (1)	21.7%	34.7%	40.0%	28.6%
High (2)	18.9%	24.9%	20.0%	22.0%
Moderately High (3)	31.0%	23.7%	22.5%	27.1%
Moderately Low (4)	17.7%	10.7%	12.5%	14.0%
Low (5)	6.4%	3.5%	0.0%	4.8%
Very Low (6)	4.3%	2.6%	5.0%	3.4%
Mean	2.8	2.3	2.3	2.5
Median	3	2	2	2
Count	2126	2349	40	4515

### 2. How many class sessions did you attend?

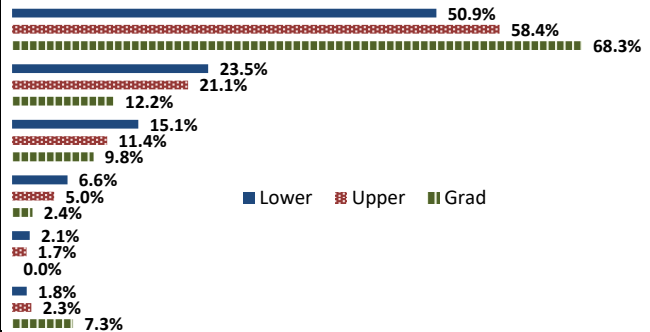
	Response by Course Level			
	Lower	Upper	Grad	Total
All (1)	77.9%	77.7%	75.7%	77.8%
Almost All (2)	18.3%	18.7%	24.3%	18.6%
More than Half (3)	2.6%	1.8%	0.0%	2.2%
Less than Half (4)	1.2%	1.8%	0.0%	1.5%
Mean	1.3	1.3	1.2	1.3
Median	1	1	1	1
Count	1948	2152	37	4137

### 3. Why did you take this course? Choose all that apply.

	Response by Course Level			
	Lower	Upper	Grad	Total
3a. The course fulfills a general education requirement.	77.1%	41.5%	12.2%	57.9%
3b. The course fulfills a requirement in my major.	25.0%	69.3%	82.9%	48.7%
3c. I have enjoyed the professor's class(es) in the past.	8.0%	16.8%	39.0%	12.9%
3d. The course will improve job/career opportunities.	12.1%	18.7%	24.4%	15.7%
3e. The course sounded interesting to me.	27.3%	31.3%	46.3%	29.6%

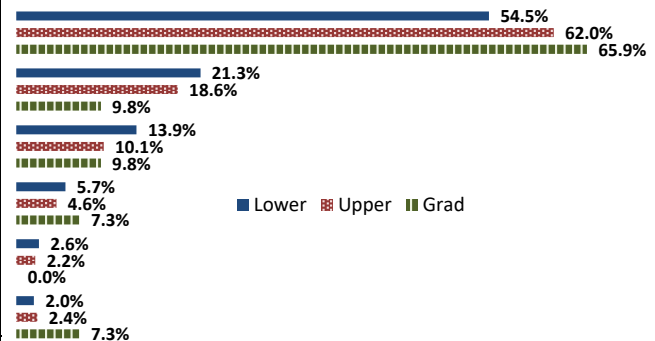
### 4. How would you rate the overall quality of instruction in this course?

	Response by Course Level			
	Lower	Upper	Grad	Total
Excellent (6)	50.9%	58.4%	68.3%	55.0%
Very Good (5)	23.5%	21.1%	12.2%	22.2%
Good (4)	15.1%	11.4%	9.8%	13.1%
Fair (3)	6.6%	5.0%	2.4%	5.8%
Poor (2)	2.1%	1.7%	0.0%	1.9%
Unsatisfactory (1)	1.8%	2.3%	7.3%	2.1%
Mean	5.1	5.2	5.2	5.2
Median	6	6	6	6
Count	2169	2423	41	4633



### 5. How would you rate your professor's specific contribution to you learning in this course?

	Response by Course Level			
	Lower	Upper	Grad	Total
Excellent (6)	54.5%	62.0%	65.9%	58.5%
Very Good (5)	21.3%	18.6%	9.8%	19.8%
Good (4)	13.9%	10.1%	9.8%	11.9%
Fair (3)	5.7%	4.6%	7.3%	5.1%
Poor (2)	2.6%	2.2%	0.0%	2.4%
Unsatisfactory (1)	2.0%	2.4%	7.3%	2.3%
Mean	5.1	5.3	5.1	5.2
Median	6	6	6	6
Count	2169	2419	41	4629



# Student Opinion of Teaching Effectiveness (SOTE)- College of Business and Public Administration Spring 2020 Term Summary

## 1. Rate your interest in the subject matter of this course before you took the class.

	Response by Course Level			
	Lower	Upper	Grad	Total
Very High (1)	26.4%	33.9%	37.2%	33.2%
High (2)	27.5%	25.1%	23.4%	25.3%
Moderately High (3)	26.4%	24.5%	23.2%	24.6%
Moderately Low (4)	11.9%	10.5%	9.7%	10.6%
Low (5)	4.8%	3.8%	3.0%	3.9%
Very Low (6)	3.0%	2.2%	3.5%	2.5%
Mean	2.5	2.3	2.3	2.3
Median	2	2	2	2
Count	640	2784	538	3962

## 2. How many class sessions did you attend?

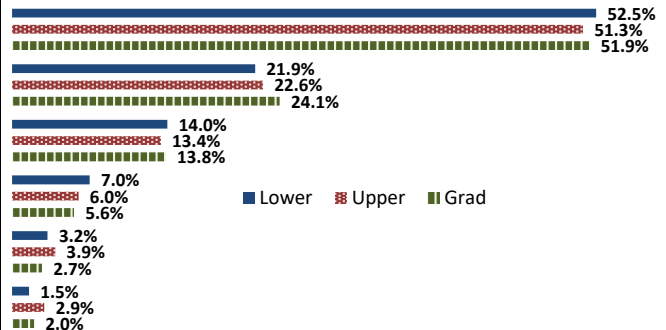
	Response by Course Level			
	Lower	Upper	Grad	Total
All (1)	66.9%	76.6%	85.3%	76.3%
Almost All (2)	24.7%	19.4%	11.4%	19.1%
More than Half (3)	5.6%	2.0%	1.4%	2.5%
Less than Half (4)	2.9%	2.0%	2.0%	2.1%
Mean	1.4	1.3	1.2	1.3
Median	1	1	1	1
Count	595	2569	509	3673

## 3. Why did you take this course? Choose all that apply.

	Response by Course Level			
	Lower	Upper	Grad	Total
3a. The course fulfills a general education requirement.	44.2%	30.0%	34.8%	32.9%
3b. The course fulfills a requirement in my major.	63.8%	86.3%	83.8%	82.3%
3c. I have enjoyed the professor's class(es) in the past.	5.5%	9.0%	9.9%	8.5%
3d. The course will improve job/career opportunities.	26.5%	28.5%	32.0%	28.7%
3e. The course sounded interesting to me.	23.3%	18.6%	20.1%	19.6%

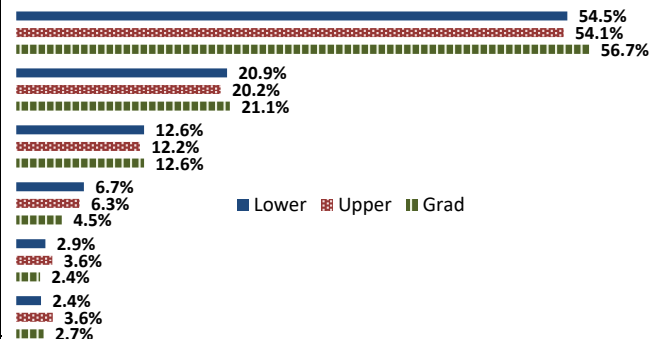
## 4. How would you rate the overall quality of instruction in this course?

	Response by Course Level			
	Lower	Upper	Grad	Total
Excellent (6)	52.5%	51.3%	51.9%	51.6%
Very Good (5)	21.9%	22.6%	24.1%	22.7%
Good (4)	14.0%	13.4%	13.8%	13.5%
Fair (3)	7.0%	6.0%	5.6%	6.1%
Poor (2)	3.2%	3.9%	2.7%	3.6%
Unsatisfactory (1)	1.5%	2.9%	2.0%	2.6%
Mean	5.1	5.0	5.1	5.0
Median	6	6	6	6
Count	659	2864	557	4080



## 5. How would you rate your professor's specific contribution to you learning in this course?

	Response by Course Level			
	Lower	Upper	Grad	Total
Excellent (6)	54.5%	54.1%	56.7%	54.5%
Very Good (5)	20.9%	20.2%	21.1%	20.4%
Good (4)	12.6%	12.2%	12.6%	12.4%
Fair (3)	6.7%	6.3%	4.5%	6.1%
Poor (2)	2.9%	3.6%	2.4%	3.3%
Unsatisfactory (1)	2.4%	3.6%	2.7%	3.3%
Mean	5.1	5.0	5.2	5.1
Median	6	6	6	6
Count	657	2861	554	4072



## Student Opinion of Teaching Effectiveness (SOTE)- College of Education Spring 2020 Term Summary

### 1. Rate your interest in the subject matter of this course before you took the class.

	Response by Course Level			
	Lower	Upper	Grad	Total
Very High (1)	58.5%	34.4%	51.0%	45.5%
High (2)	9.8%	24.5%	26.0%	25.0%
Moderately High (3)	26.8%	28.7%	17.2%	21.5%
Moderately Low (4)	2.4%	8.7%	4.6%	6.0%
Low (5)	2.4%	2.5%	0.8%	1.4%
Very Low (6)	0.0%	1.2%	0.5%	0.7%
Mean	1.8	2.2	1.8	2.0
Median	1	2	1	2
Count	41	436	781	1258

### 2. How many class sessions did you attend?

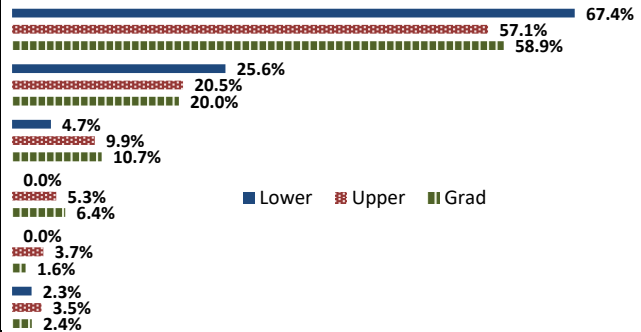
	Response by Course Level			
	Lower	Upper	Grad	Total
All (1)	76.3%	90.9%	91.5%	90.8%
Almost All (2)	23.7%	8.1%	7.6%	8.3%
More than Half (3)	0.0%	0.5%	0.5%	0.5%
Less than Half (4)	0.0%	0.5%	0.4%	0.4%
Mean	1.2	1.1	1.1	1.1
Median	1	1	1	1
Count	38	408	742	1188

### 3. Why did you take this course? Choose all that apply.

	Response by Course Level			
	Lower	Upper	Grad	Total
3a. The course fulfills a general education requirement.	34.9%	29.0%	22.1%	24.9%
3b. The course fulfills a requirement in my major.	72.1%	74.1%	86.3%	81.5%
3c. I have enjoyed the professor's class(es) in the past.	9.3%	9.9%	25.1%	19.3%
3d. The course will improve job/career opportunities.	20.9%	34.3%	35.3%	34.5%
3e. The course sounded interesting to me.	27.9%	14.3%	15.7%	15.6%

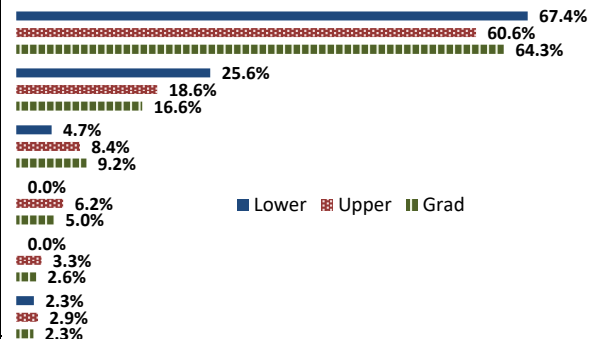
### 4. How would you rate the overall quality of instruction in this course?

	Response by Course Level			
	Lower	Upper	Grad	Total
Excellent (6)	67.4%	57.1%	58.9%	58.6%
Very Good (5)	25.6%	20.5%	20.0%	20.3%
Good (4)	4.7%	9.9%	10.7%	10.3%
Fair (3)	0.0%	5.3%	6.4%	5.8%
Poor (2)	0.0%	3.7%	1.6%	2.3%
Unsatisfactory (1)	2.3%	3.5%	2.4%	2.8%
Mean	5.5	5.1	5.2	5.2
Median	6	6	6	6
Count	43	454	801	1298



### 5. How would you rate your professor's specific contribution to you learning in this course?

	Response by Course Level			
	Lower	Upper	Grad	Total
Excellent (6)	67.4%	60.6%	64.3%	63.1%
Very Good (5)	25.6%	18.6%	16.6%	17.6%
Good (4)	4.7%	8.4%	9.2%	8.8%
Fair (3)	0.0%	6.2%	5.0%	5.3%
Poor (2)	0.0%	3.3%	2.6%	2.8%
Unsatisfactory (1)	2.3%	2.9%	2.3%	2.5%
Mean	5.5	5.2	5.3	5.3
Median	6	6	6	6
Count	43	452	801	1296



## Student Opinion of Teaching Effectiveness (SOTE)- College of Natural Sciences Spring 2020 Term Summary

### 1. Rate your interest in the subject matter of this course before you took the class.

	Response by Course Level			
	Lower	Upper	Grad	Total
Very High (1)	22.7%	32.6%	43.2%	28.6%
High (2)	21.6%	24.1%	29.1%	23.2%
Moderately High (3)	30.5%	25.3%	23.0%	27.5%
Moderately Low (4)	15.2%	11.2%	2.7%	12.7%
Low (5)	5.1%	3.8%	2.0%	4.3%
Very Low (6)	4.9%	3.1%	0.0%	3.8%
Mean	2.7	2.4	1.9	2.5
Median	3	2	2	2
Count	2980	3979	148	7107

### 2. How many class sessions did you attend?

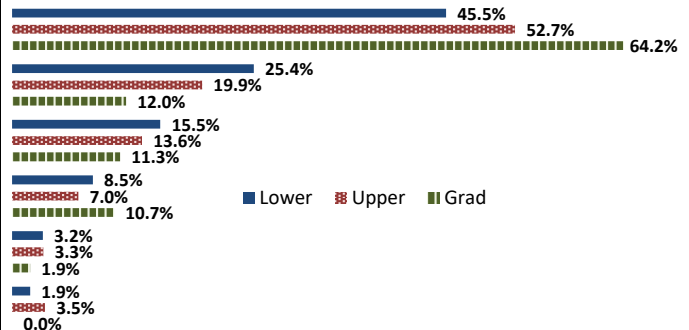
	Response by Course Level			
	Lower	Upper	Grad	Total
All (1)	72.4%	80.8%	92.3%	77.5%
Almost All (2)	20.4%	15.9%	4.2%	17.5%
More than Half (3)	3.9%	1.9%	2.1%	2.8%
Less than Half (4)	3.4%	1.4%	1.4%	2.2%
Mean	1.4	1.2	1.1	1.3
Median	1	1	1	1
Count	2757	3649	142	6548

### 3. Why did you take this course? Choose all that apply.

	Response by Course Level			
	Lower	Upper	Grad	Total
3a. The course fulfills a general education requirement.	57.7%	30.7%	20.8%	41.8%
3b. The course fulfills a requirement in my major.	57.9%	77.5%	87.4%	69.5%
3c. I have enjoyed the professor's class(es) in the past.	7.5%	12.7%	28.3%	10.9%
3d. The course will improve job/career opportunities.	13.3%	18.7%	25.2%	16.6%
3e. The course sounded interesting to me.	14.2%	18.6%	26.4%	16.9%

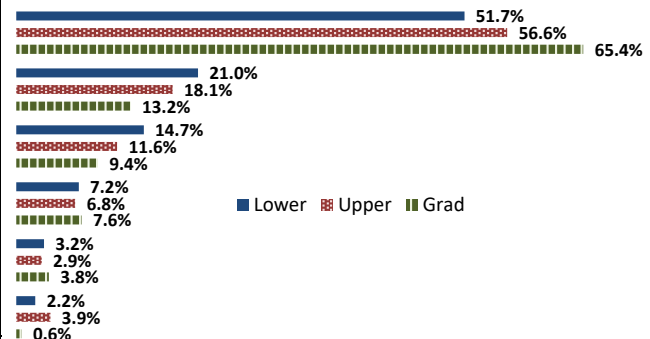
### 4. How would you rate the overall quality of instruction in this course?

	Response by Course Level			
	Lower	Upper	Grad	Total
Excellent (6)	45.5%	52.7%	64.2%	50.0%
Very Good (5)	25.4%	19.9%	12.0%	22.0%
Good (4)	15.5%	13.6%	11.3%	14.4%
Fair (3)	8.5%	7.0%	10.7%	7.7%
Poor (2)	3.2%	3.3%	1.9%	3.2%
Unsatisfactory (1)	1.9%	3.5%	0.0%	2.7%
Mean	5.0	5.0	5.3	5.0
Median	5	6	6	5
Count	3069	4082	159	7310



### 5. How would you rate your professor's specific contribution to your learning in this course?

	Response by Course Level			
	Lower	Upper	Grad	Total
Excellent (6)	51.7%	56.6%	65.4%	54.8%
Very Good (5)	21.0%	18.1%	13.2%	19.2%
Good (4)	14.7%	11.6%	9.4%	12.9%
Fair (3)	7.2%	6.8%	7.6%	7.0%
Poor (2)	3.2%	2.9%	3.8%	3.1%
Unsatisfactory (1)	2.2%	3.9%	0.6%	3.1%
Mean	5.0	5.1	5.3	5.1
Median	5	6	6	6
Count	3065	4089	159	7313



# Student Opinion of Teaching Effectiveness (SOTE)- College of Social and Behavioral Sciences Spring 2020 Term Summary

## 1. Rate your interest in the subject matter of this course before you took the class.

	Response by Course Level			
	Lower	Upper	Grad	Total
Very High (1)	17.4%	33.9%	38.8%	28.9%
High (2)	20.7%	24.3%	27.9%	23.4%
Moderately High (3)	32.0%	25.1%	20.0%	27.0%
Moderately Low (4)	18.0%	11.0%	7.6%	13.0%
Low (5)	6.4%	3.4%	3.6%	4.4%
Very Low (6)	5.5%	2.3%	2.1%	3.4%
Mean	2.9	2.3	2.2	2.5
Median	3	2	2	2
Count	2367	4650	420	7437

## 2. How many class sessions did you attend?

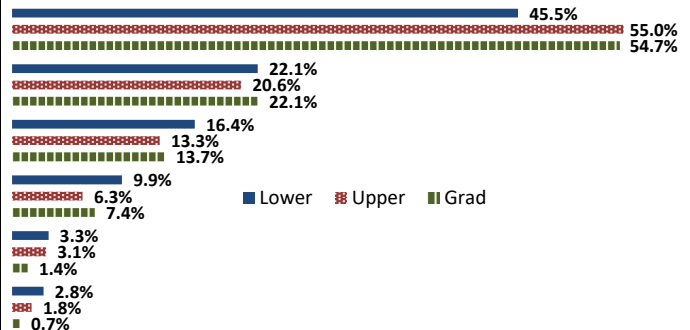
	Response by Course Level			
	Lower	Upper	Grad	Total
All (1)	78.1%	77.7%	90.7%	78.6%
Almost All (2)	15.3%	16.5%	9.1%	15.7%
More than Half (3)	3.4%	2.6%	0.3%	2.7%
Less than Half (4)	3.2%	3.2%	0.0%	3.0%
Mean	1.3	1.3	1.1	1.3
Median	1	1	1	1
Count	2178	4296	397	6871

## 3. Why did you take this course? Choose all that apply.

	Response by Course Level			
	Lower	Upper	Grad	Total
3a. The course fulfills a general education requirement.	76.5%	36.1%	27.4%	48.5%
3b. The course fulfills a requirement in my major.	33.4%	74.8%	83.5%	62.0%
3c. I have enjoyed the professor's class(es) in the past.	3.3%	15.0%	22.6%	11.7%
3d. The course will improve job/career opportunities.	8.4%	20.2%	33.3%	17.1%
3e. The course sounded interesting to me.	18.5%	36.1%	19.3%	29.6%

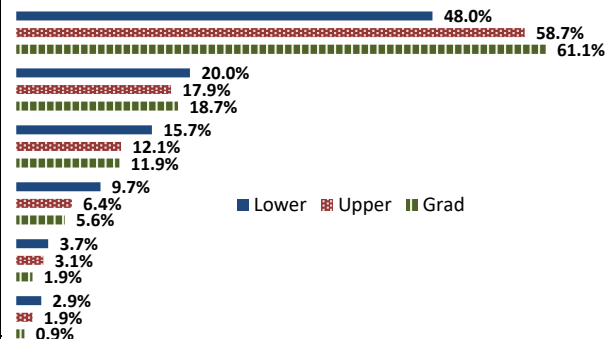
## 4. How would you rate the overall quality of instruction in this course?

	Response by Course Level			
	Lower	Upper	Grad	Total
Excellent (6)	45.5%	55.0%	54.7%	51.9%
Very Good (5)	22.1%	20.6%	22.1%	21.2%
Good (4)	16.4%	13.3%	13.7%	14.3%
Fair (3)	9.9%	6.3%	7.4%	7.5%
Poor (2)	3.3%	3.1%	1.4%	3.0%
Unsatisfactory (1)	2.8%	1.8%	0.7%	2.0%
Mean	4.9	5.1	5.2	5.1
Median	5	6	6	6
Count	2440	4764	430	7634



## 5. How would you rate your professor's specific contribution to you learning in this course?

	Response by Course Level			
	Lower	Upper	Grad	Total
Excellent (6)	48.0%	58.7%	61.1%	55.4%
Very Good (5)	20.0%	17.9%	18.7%	18.6%
Good (4)	15.7%	12.1%	11.9%	13.2%
Fair (3)	9.7%	6.4%	5.6%	7.4%
Poor (2)	3.7%	3.1%	1.9%	3.2%
Unsatisfactory (1)	2.9%	1.9%	0.9%	2.1%
Mean	4.9	5.2	5.3	5.1
Median	5	6	6	6
Count	2440	4758	429	7627



## Student Opinion of Teaching Effectiveness (SOTE)- College of University Studies Spring 2020 Term Summary

### 1. Rate your interest in the subject matter of this course before you took the class.

	Response by Course Level			
	Lower	Upper	Grad	Total
Very High (1)	0.0%	24.0%	0.0%	24.0%
High (2)	0.0%	28.0%	0.0%	28.0%
Moderately High (3)	0.0%	16.0%	0.0%	16.0%
Moderately Low (4)	0.0%	24.0%	0.0%	24.0%
Low (5)	0.0%	8.0%	0.0%	8.0%
Very Low (6)	0.0%	0.0%	0.0%	0.0%
Mean	.	2.6	.	2.6
Median	.	2	.	2
Count	0	25	0	25

### 2. How many class sessions did you attend?

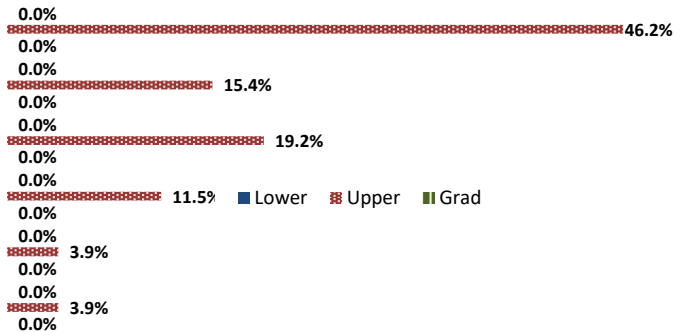
	Response by Course Level			
	Lower	Upper	Grad	Total
All (1)	0.0%	78.3%	0.0%	78.3%
Almost All (2)	0.0%	13.0%	0.0%	13.0%
More than Half (3)	0.0%	4.4%	0.0%	4.4%
Less than Half (4)	0.0%	4.4%	0.0%	4.4%
Mean	.	1.3	.	1.3
Median	.	1	.	1
Count	0	23	0	23

### 3. Why did you take this course? Choose all that apply.

	Response by Course Level			
	Lower	Upper	Grad	Total
3a. The course fulfills a general education requirement.	0.0%	88.5%	0.0%	88.5%
3b. The course fulfills a requirement in my major.	0.0%	15.4%	0.0%	15.4%
3c. I have enjoyed the professor's class(es) in the past.	0.0%	0.0%	0.0%	0.0%
3d. The course will improve job/career opportunities.	0.0%	15.4%	0.0%	15.4%
3e. The course sounded interesting to me.	0.0%	11.5%	0.0%	11.5%

### 4. How would you rate the overall quality of instruction in this course?

	Response by Course Level			
	Lower	Upper	Grad	Total
Excellent (6)	0.0%	46.2%	0.0%	46.2%
Very Good (5)	0.0%	15.4%	0.0%	15.4%
Good (4)	0.0%	19.2%	0.0%	19.2%
Fair (3)	0.0%	11.5%	0.0%	11.5%
Poor (2)	0.0%	3.9%	0.0%	3.9%
Unsatisfactory (1)	0.0%	3.9%	0.0%	3.9%
Mean	.	4.8	.	4.8
Median	.	5	.	5
Count	0	26	0	26



### 5. How would you rate your professor's specific contribution to you learning in this course?

	Response by Course Level			
	Lower	Upper	Grad	Total
Excellent (6)	0.0%	61.5%	0.0%	61.5%
Very Good (5)	0.0%	11.5%	0.0%	11.5%
Good (4)	0.0%	11.5%	0.0%	11.5%
Fair (3)	0.0%	7.7%	0.0%	7.7%
Poor (2)	0.0%	3.9%	0.0%	3.9%
Unsatisfactory (1)	0.0%	3.9%	0.0%	3.9%
Mean	.	5.1	.	5.1
Median	.	6	.	6
Count	0	26	0	26

