

California State University, San Bernardino

CSUSB ScholarWorks

CSUSB Faculty Senate records

Arthur E. Nelson University Archives

2020

Student Opinion of Teaching Effectiveness (SOTE)- College of Arts & Letters Fall 2020 Term Summary (2020)

CSUSB Faculty Senate

Follow this and additional works at: <https://scholarworks.lib.csusb.edu/facultysenate>

Recommended Citation

CSUSB Faculty Senate, "Student Opinion of Teaching Effectiveness (SOTE)- College of Arts & Letters Fall 2020 Term Summary (2020)" (2020). *CSUSB Faculty Senate records*. 295.
<https://scholarworks.lib.csusb.edu/facultysenate/295>

This Report is brought to you for free and open access by the Arthur E. Nelson University Archives at CSUSB ScholarWorks. It has been accepted for inclusion in CSUSB Faculty Senate records by an authorized administrator of CSUSB ScholarWorks. For more information, please contact scholarworks@csusb.edu.

Student Opinion of Teaching Effectiveness (SOTE)- College of Arts & Letters Fall 2020 Term Summary

1. Rate your interest in the subject matter of this course before you took the class.

	Response by Course Level			
	Lower	Upper	Grad	Total
Very High (1)	23.7%	31.3%	48.3%	27.4%
High (2)	21.3%	23.1%	25.2%	22.1%
Moderately High (3)	32.5%	27.4%	18.2%	30.0%
Moderately Low (4)	14.7%	12.0%	6.3%	13.4%
Low (5)	4.6%	3.6%	1.4%	4.1%
Very Low (6)	3.3%	2.6%	0.7%	3.0%
Mean	2.7	2.4	1.9	2.5
Median	3	2	2	3
Count	3701	2720	143	6564

2. How many class sessions did you attend?

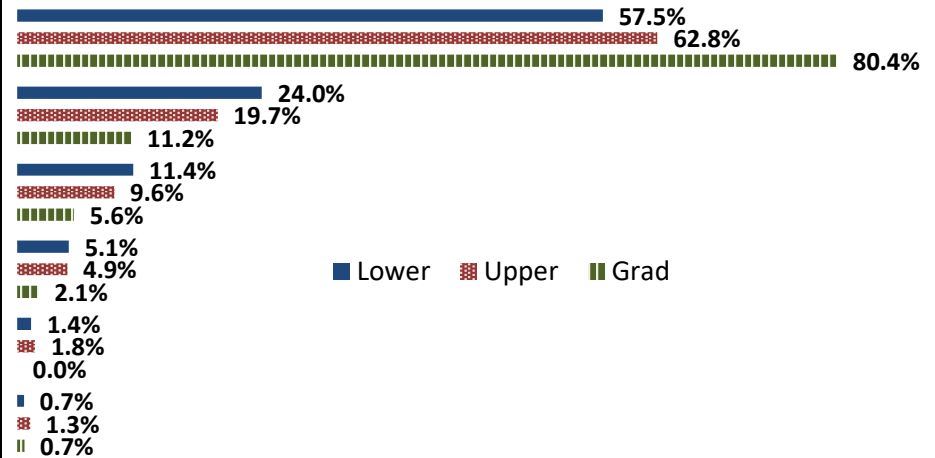
	Response by Course Level			
	Lower	Upper	Grad	Total
All (1)	61.9%	62.6%	65.4%	62.3%
Almost All (2)	29.9%	30.7%	28.7%	30.2%
More than Half (3)	4.5%	4.0%	5.2%	4.3%
Less than Half (4)	3.7%	2.7%	0.7%	3.2%
Mean	1.5	1.5	1.4	1.5
Median	1	1	1	1
Count	3465	2505	136	6106

3. Why did you take this course? Choose all that apply.

	Response by Course Level			
	Lower	Upper	Grad	Total
3a. The course fulfills a general education requirement.	75.9%	53.7%	23.8%	65.6%
3b. The course fulfills a requirement in my major.	39.0%	64.9%	83.9%	50.7%
3c. I have enjoyed the professor's class(es) in the past.	4.1%	11.4%	29.4%	7.7%
3d. The course will improve job/career opportunities.	19.1%	18.9%	30.1%	19.2%
3e. The course sounded interesting to me.	31.7%	39.2%	33.6%	34.8%

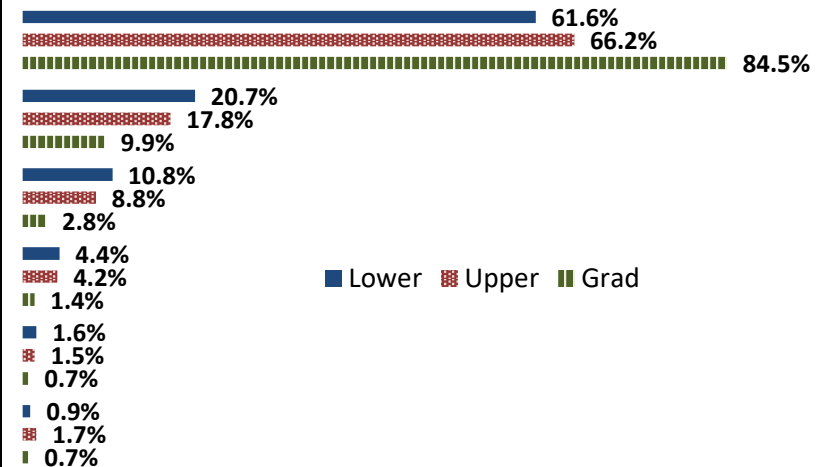
4. How would you rate the overall quality of instruction in this course?

	Response by Course Level			
	Lower	Upper	Grad	Total
Excellent (6)	57.5%	62.8%	80.4%	60.2%
Very Good (5)	24.0%	19.7%	11.2%	21.9%
Good (4)	11.4%	9.6%	5.6%	10.5%
Fair (3)	5.1%	4.9%	2.1%	5.0%
Poor (2)	1.4%	1.8%	0.0%	1.5%
Unsatisfactory (1)	0.7%	1.3%	0.7%	0.9%
Mean	5.3	5.3	5.7	5.3
Median	6	6	6	6
Count	3777	2765	143	6685



5. How would you rate your professor's specific contribution to your learning in this course?

	Response by Course Level			
	Lower	Upper	Grad	Total
Excellent (6)	61.6%	66.2%	84.5%	64.0%
Very Good (5)	20.7%	17.8%	9.9%	19.3%
Good (4)	10.8%	8.8%	2.8%	9.8%
Fair (3)	4.4%	4.2%	1.4%	4.3%
Poor (2)	1.6%	1.5%	0.7%	1.5%
Unsatisfactory (1)	0.9%	1.7%	0.7%	1.2%
Mean	5.3	5.4	5.7	5.4
Median	6	6	6	6
Count	3771	2764	142	6677



Student Opinion of Teaching Effectiveness (SOTE)- College of Business and Public Administration Fall 2020 Term Summary

1. Rate your interest in the subject matter of this course before you took the class.

	Response by Course Level			
	Lower	Upper	Grad	Total
Very High (1)	27.8%	32.5%	40.0%	32.6%
High (2)	23.7%	25.3%	21.6%	24.7%
Moderately High (3)	28.4%	26.5%	20.7%	26.2%
Moderately Low (4)	11.9%	10.8%	11.3%	11.0%
Low (5)	5.0%	2.9%	4.1%	3.4%
Very Low (6)	3.2%	2.0%	2.4%	2.2%
Mean	2.5	2.3	2.2	2.3
Median	2	2	2	2
Count	697	3209	468	4374

2. How many class sessions did you attend?

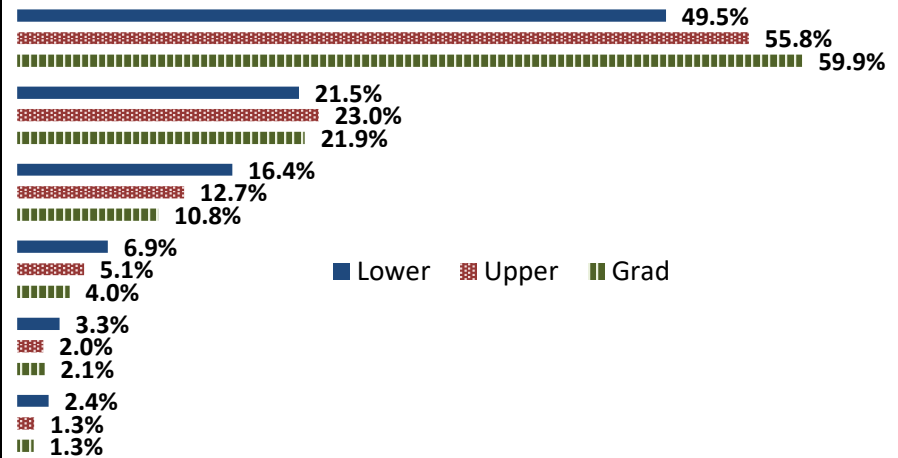
	Response by Course Level			
	Lower	Upper	Grad	Total
All (1)	58.7%	68.0%	84.2%	68.2%
Almost All (2)	31.7%	25.8%	13.7%	25.5%
More than Half (3)	6.1%	3.2%	0.9%	3.4%
Less than Half (4)	3.6%	3.0%	1.1%	2.9%
Mean	1.5	1.4	1.2	1.4
Median	1	1	1	1
Count	644	2933	437	4014

3. Why did you take this course? Choose all that apply.

	Response by Course Level			
	Lower	Upper	Grad	Total
3a. The course fulfills a general education requirement.	51.5%	35.9%	39.7%	38.8%
3b. The course fulfills a requirement in my major.	73.0%	87.0%	83.8%	84.5%
3c. I have enjoyed the professor's class(es) in the past.	3.7%	8.1%	10.3%	7.6%
3d. The course will improve job/career opportunities.	31.3%	31.6%	33.8%	31.8%
3e. The course sounded interesting to me.	26.0%	21.9%	21.9%	22.6%

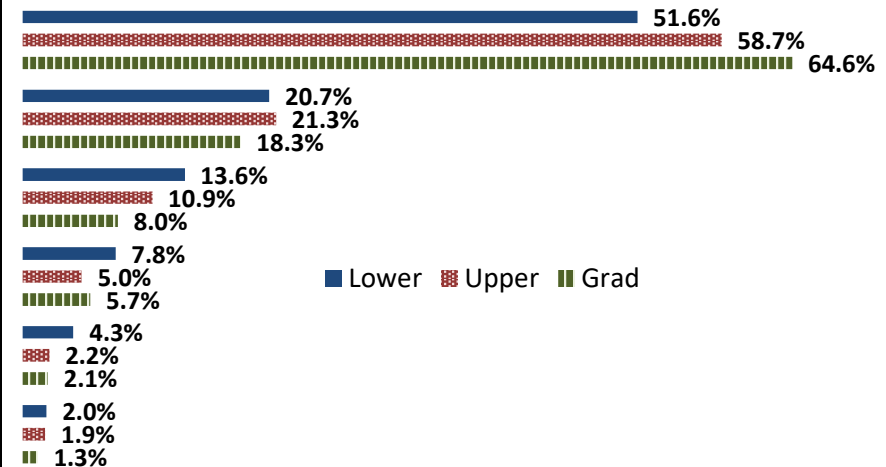
4. How would you rate the overall quality of instruction in this course?

	Response by Course Level			
	Lower	Upper	Grad	Total
Excellent (6)	49.5%	55.8%	59.9%	55.3%
Very Good (5)	21.5%	23.0%	21.9%	22.7%
Good (4)	16.4%	12.7%	10.8%	13.1%
Fair (3)	6.9%	5.1%	4.0%	5.3%
Poor (2)	3.3%	2.0%	2.1%	2.2%
Unsatisfactory (1)	2.4%	1.3%	1.3%	1.5%
Mean	5.0	5.2	5.3	5.2
Median	5	6	6	6
Count	707	3277	474	4458



5. How would you rate your professor's specific contribution to your learning in this course?

	Response by Course Level			
	Lower	Upper	Grad	Total
Excellent (6)	51.6%	58.7%	64.6%	58.2%
Very Good (5)	20.7%	21.3%	18.3%	20.9%
Good (4)	13.6%	10.9%	8.0%	11.0%
Fair (3)	7.8%	5.0%	5.7%	5.5%
Poor (2)	4.3%	2.2%	2.1%	2.5%
Unsatisfactory (1)	2.0%	1.9%	1.3%	1.8%
Mean	5.0	5.2	5.3	5.2
Median	5	6	6	6
Count	705	3265	475	4445



Student Opinion of Teaching Effectiveness (SOTE)- College of Education Fall 2020 Term Summary

1. Rate your interest in the subject matter of this course before you took the class.

	Response by Course Level			
	Lower	Upper	Grad	Total
Very High (1)	34.0%	39.9%	51.3%	47.0%
High (2)	30.2%	31.0%	25.0%	27.1%
Moderately High (3)	20.8%	21.8%	16.4%	18.3%
Moderately Low (4)	9.4%	6.2%	5.5%	5.9%
Low (5)	5.7%	0.5%	1.3%	1.2%
Very Low (6)	0.0%	0.5%	0.5%	0.5%
Mean	2.2	2.0	1.8	1.9
Median	2	2	1	2
Count	53	564	1105	1722

2. How many class sessions did you attend?

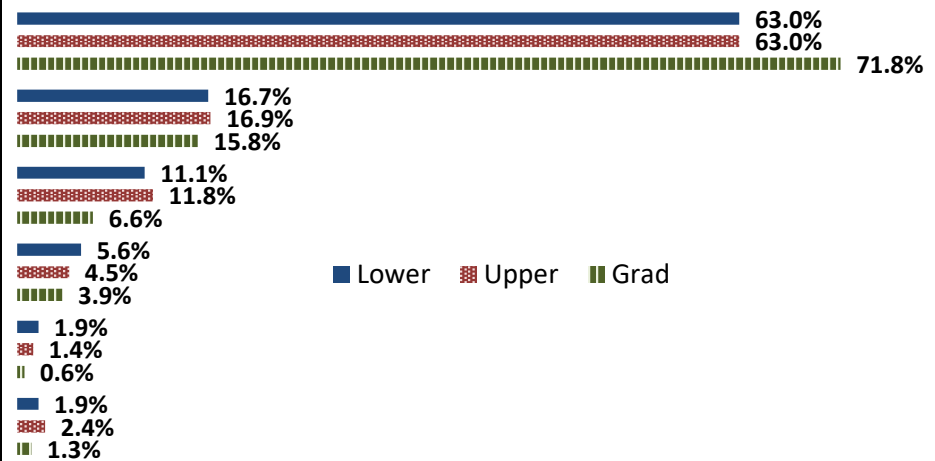
	Response by Course Level			
	Lower	Upper	Grad	Total
All (1)	80.4%	82.8%	88.7%	86.5%
Almost All (2)	17.4%	15.6%	10.7%	12.5%
More than Half (3)	0.0%	0.9%	0.1%	0.4%
Less than Half (4)	2.2%	0.7%	0.5%	0.6%
Mean	1.2	1.2	1.1	1.2
Median	1	1	1	1
Count	46	540	1045	1631

3. Why did you take this course? Choose all that apply.

	Response by Course Level			
	Lower	Upper	Grad	Total
3a. The course fulfills a general education requirement.	46.3%	28.4%	26.6%	27.8%
3b. The course fulfills a requirement in my major.	59.3%	86.3%	85.4%	84.9%
3c. I have enjoyed the professor's class(es) in the past.	7.4%	3.5%	12.3%	9.3%
3d. The course will improve job/career opportunities.	24.1%	34.6%	39.1%	37.2%
3e. The course sounded interesting to me.	38.9%	15.3%	15.7%	16.3%

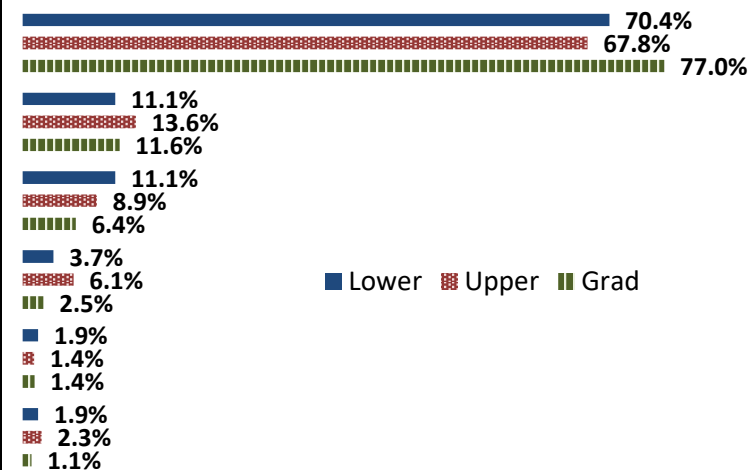
4. How would you rate the overall quality of instruction in this course?

	Response by Course Level			
	Lower	Upper	Grad	Total
Excellent (6)	63.0%	63.0%	71.8%	68.6%
Very Good (5)	16.7%	16.9%	15.8%	16.2%
Good (4)	11.1%	11.8%	6.6%	8.5%
Fair (3)	5.6%	4.5%	3.9%	4.2%
Poor (2)	1.9%	1.4%	0.6%	0.9%
Unsatisfactory (1)	1.9%	2.4%	1.3%	1.7%
Mean	5.3	5.3	5.5	5.4
Median	6	6	6	6
Count	54	575	1117	1746



5. How would you rate your professor's specific contribution to your learning in this course?

	Response by Course Level			
	Lower	Upper	Grad	Total
Excellent (6)	70.4%	67.8%	77.0%	73.8%
Very Good (5)	11.1%	13.6%	11.6%	12.3%
Good (4)	11.1%	8.9%	6.4%	7.3%
Fair (3)	3.7%	6.1%	2.5%	3.7%
Poor (2)	1.9%	1.4%	1.4%	1.4%
Unsatisfactory (1)	1.9%	2.3%	1.1%	1.5%
Mean	5.4	5.3	5.6	5.5
Median	6	6	6	6
Count	54	574	1117	1745



Student Opinion of Teaching Effectiveness (SOTE)- College of Natural Sciences Fall 2020 Term Summary

1. Rate your interest in the subject matter of this course before you took the class.

	Response by Course Level			
	Lower	Upper	Grad	Total
Very High (1)	21.5%	32.4%	57.1%	26.7%
High (2)	22.2%	27.7%	19.3%	24.6%
Moderately High (3)	30.2%	24.1%	18.5%	27.4%
Moderately Low (4)	17.5%	10.8%	4.2%	14.4%
Low (5)	5.1%	2.9%	0.0%	4.0%
Very Low (6)	3.6%	2.1%	0.8%	2.9%
Mean	2.7	2.3	1.7	2.5
Median	3	2	1	2
Count	4932	3895	119	8946

2. How many class sessions did you attend?

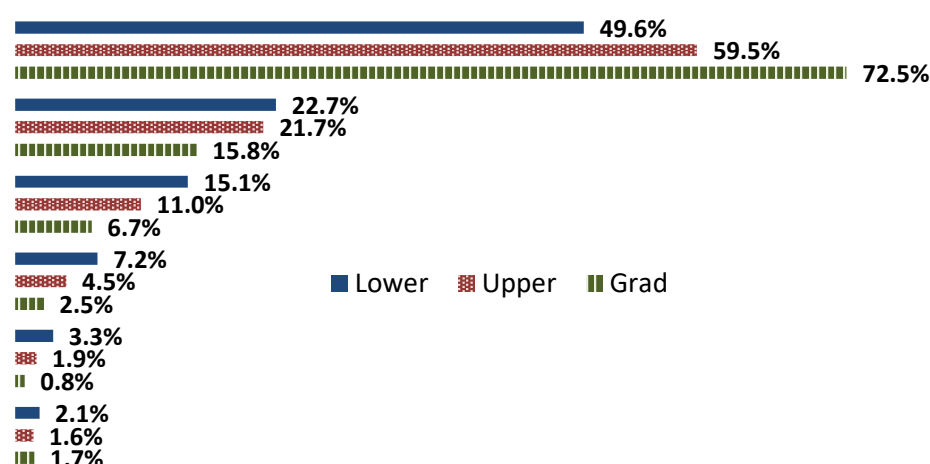
	Response by Course Level			
	Lower	Upper	Grad	Total
All (1)	64.8%	69.5%	89.5%	67.2%
Almost All (2)	28.4%	24.8%	9.7%	26.6%
More than Half (3)	4.1%	3.1%	0.0%	3.6%
Less than Half (4)	2.6%	2.7%	0.9%	2.6%
Mean	1.4	1.4	1.1	1.4
Median	1	1	1	1
Count	4459	3542	114	8115

3. Why did you take this course? Choose all that apply.

	Response by Course Level			
	Lower	Upper	Grad	Total
3a. The course fulfills a general education requirement.	62.9%	34.7%	31.7%	50.2%
3b. The course fulfills a requirement in my major.	62.3%	81.5%	89.2%	71.0%
3c. I have enjoyed the professor's class(es) in the past.	3.9%	10.0%	25.0%	6.9%
3d. The course will improve job/career opportunities.	17.0%	23.7%	37.5%	20.2%
3e. The course sounded interesting to me.	19.7%	24.9%	26.7%	22.1%

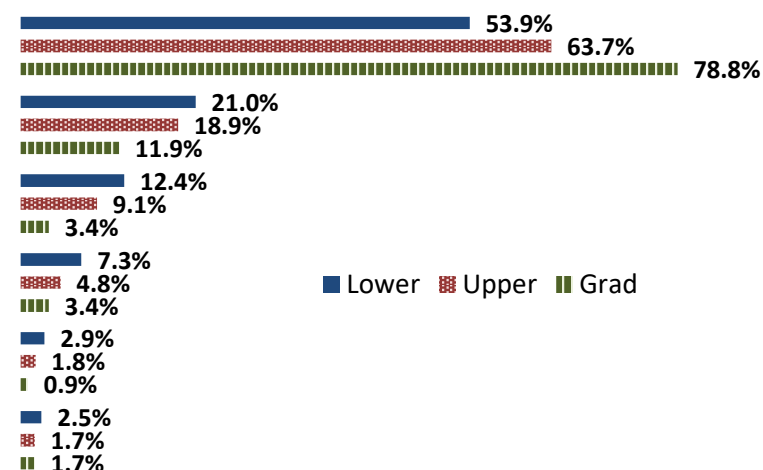
4. How would you rate the overall quality of instruction in this course?

	Response by Course Level			
	Lower	Upper	Grad	Total
Excellent (6)	49.6%	59.5%	72.5%	54.2%
Very Good (5)	22.7%	21.7%	15.8%	22.2%
Good (4)	15.1%	11.0%	6.7%	13.2%
Fair (3)	7.2%	4.5%	2.5%	5.9%
Poor (2)	3.3%	1.9%	0.8%	2.6%
Unsatisfactory (1)	2.1%	1.6%	1.7%	1.9%
Mean	5.0	5.3	5.5	5.1
Median	5	6	6	6
Count	5047	3995	120	9162



5. How would you rate your professor's specific contribution to your learning in this course?

	Response by Course Level			
	Lower	Upper	Grad	Total
Excellent (6)	53.9%	63.7%	78.8%	58.5%
Very Good (5)	21.0%	18.9%	11.9%	20.0%
Good (4)	12.4%	9.1%	3.4%	10.9%
Fair (3)	7.3%	4.8%	3.4%	6.2%
Poor (2)	2.9%	1.8%	0.9%	2.4%
Unsatisfactory (1)	2.5%	1.7%	1.7%	2.1%
Mean	5.1	5.3	5.6	5.2
Median	5	6	6	6
Count	5047	3995	118	9160



Student Opinion of Teaching Effectiveness (SOTE)- College of Social and Behavioral Sciences Fall 2020 Term Summary

1. Rate your interest in the subject matter of this course before you took the class.

	Response by Course Level			
	Lower	Upper	Grad	Total
Very High (1)	23.9%	36.6%	42.5%	31.7%
High (2)	23.4%	23.6%	27.4%	23.8%
Moderately High (3)	27.6%	23.1%	20.2%	24.8%
Moderately Low (4)	16.5%	10.9%	6.8%	13.0%
Low (5)	5.3%	3.6%	2.1%	4.2%
Very Low (6)	3.4%	2.3%	1.0%	2.7%
Mean	2.7	2.3	2.0	2.4
Median	3	2	2	2
Count	3254	4048	485	7787

2. How many class sessions did you attend?

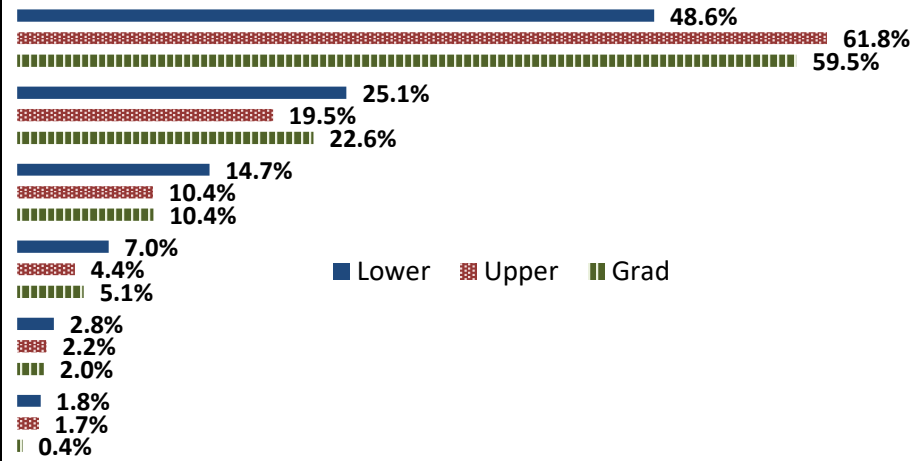
	Response by Course Level			
	Lower	Upper	Grad	Total
All (1)	70.6%	68.2%	83.6%	70.2%
Almost All (2)	19.0%	23.3%	15.8%	21.0%
More than Half (3)	4.5%	3.8%	0.4%	3.9%
Less than Half (4)	5.9%	4.7%	0.2%	4.9%
Mean	1.5	1.4	1.2	1.4
Median	1	1	1	1
Count	2850	3621	456	6927

3. Why did you take this course? Choose all that apply.

	Response by Course Level			
	Lower	Upper	Grad	Total
3a. The course fulfills a general education requirement.	70.7%	40.8%	23.8%	52.2%
3b. The course fulfills a requirement in my major.	50.9%	79.5%	92.1%	68.3%
3c. I have enjoyed the professor's class(es) in the past.	2.1%	10.4%	12.8%	7.1%
3d. The course will improve job/career opportunities.	13.9%	22.9%	33.7%	19.8%
3e. The course sounded interesting to me.	24.2%	35.9%	20.3%	30.0%

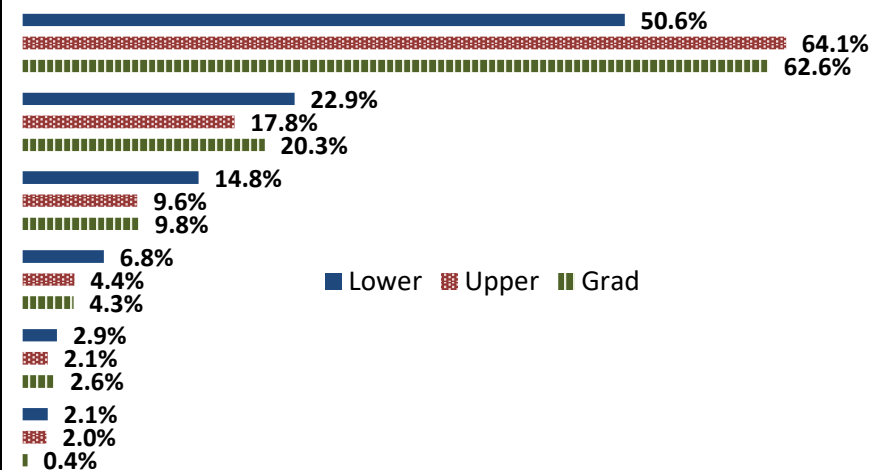
4. How would you rate the overall quality of instruction in this course?

	Response by Course Level			
	Lower	Upper	Grad	Total
Excellent (6)	48.6%	61.8%	59.5%	56.2%
Very Good (5)	25.1%	19.5%	22.6%	22.1%
Good (4)	14.7%	10.4%	10.4%	12.2%
Fair (3)	7.0%	4.4%	5.1%	5.5%
Poor (2)	2.8%	2.2%	2.0%	2.5%
Unsatisfactory (1)	1.8%	1.7%	0.4%	1.6%
Mean	5.0	5.3	5.3	5.2
Median	5	6	6	6
Count	3307	4114	491	7912



5. How would you rate your professor's specific contribution to your learning in this course?

	Response by Course Level			
	Lower	Upper	Grad	Total
Excellent (6)	50.6%	64.1%	62.6%	58.3%
Very Good (5)	22.9%	17.8%	20.3%	20.1%
Good (4)	14.8%	9.6%	9.8%	11.8%
Fair (3)	6.8%	4.4%	4.3%	5.4%
Poor (2)	2.9%	2.1%	2.6%	2.5%
Unsatisfactory (1)	2.1%	2.0%	0.4%	2.0%
Mean	5.1	5.3	5.3	5.2
Median	5	6	6	6
Count	3300	4111	492	7903



Student Opinion of Teaching Effectiveness (SOTE)- College of University Studies Fall 2020 Term Summary

1. Rate your interest in the subject matter of this course before you took the class.

	Response by Course Level			
	Lower	Upper	Grad	Total
Very High (1)	11.7%	9.1%	0.0%	11.5%
High (2)	16.8%	45.5%	0.0%	18.3%
Moderately High (3)	39.1%	36.4%	0.0%	38.9%
Moderately Low (4)	23.9%	9.1%	0.0%	23.1%
Low (5)	5.6%	0.0%	0.0%	5.3%
Very Low (6)	3.1%	0.0%	0.0%	2.9%
Mean	3.0	2.5	.	3.0
Median	3	2	.	3
Count	197	11	0	208

2. How many class sessions did you attend?

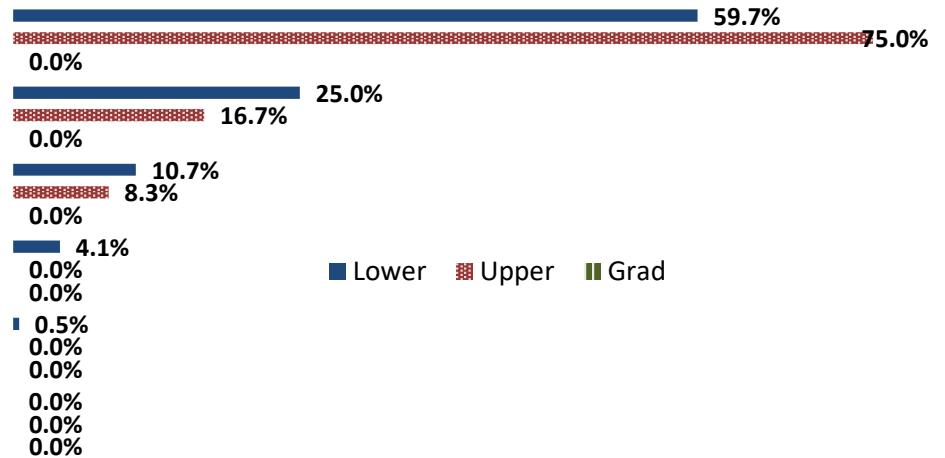
	Response by Course Level			
	Lower	Upper	Grad	Total
All (1)	67.6%	70.0%	0.0%	67.7%
Almost All (2)	22.2%	30.0%	0.0%	22.6%
More than Half (3)	4.0%	0.0%	0.0%	3.8%
Less than Half (4)	6.3%	0.0%	0.0%	5.9%
Mean	1.5	1.3	.	1.5
Median	1	1	.	1
Count	176	10	0	186

3. Why did you take this course? Choose all that apply.

	Response by Course Level			
	Lower	Upper	Grad	Total
3a. The course fulfills a general education requirement.	90.4%	25.0%	0.0%	86.6%
3b. The course fulfills a requirement in my major.	24.4%	41.7%	0.0%	25.4%
3c. I have enjoyed the professor's class(es) in the past.	0.5%	25.0%	0.0%	1.9%
3d. The course will improve job/career opportunities.	10.7%	33.3%	0.0%	12.0%
3e. The course sounded interesting to me.	17.8%	8.3%	0.0%	17.2%

4. How would you rate the overall quality of instruction in this course?

	Response by Course Level			
	Lower	Upper	Grad	Total
Excellent (6)	59.7%	75.0%	0.0%	60.6%
Very Good (5)	25.0%	16.7%	0.0%	24.5%
Good (4)	10.7%	8.3%	0.0%	10.6%
Fair (3)	4.1%	0.0%	0.0%	3.9%
Poor (2)	0.5%	0.0%	0.0%	0.5%
Unsatisfactory (1)	0.0%	0.0%	0.0%	0.0%
Mean	5.4	5.7	.	5.4
Median	6	6	.	6
Count	196	12	0	208



5. How would you rate your professor's specific contribution to your learning in this course?

	Response by Course Level			
	Lower	Upper	Grad	Total
Excellent (6)	62.8%	91.7%	0.0%	64.4%
Very Good (5)	23.5%	8.3%	0.0%	22.6%
Good (4)	6.6%	0.0%	0.0%	6.3%
Fair (3)	6.1%	0.0%	0.0%	5.8%
Poor (2)	1.0%	0.0%	0.0%	1.0%
Unsatisfactory (1)	0.0%	0.0%	0.0%	0.0%
Mean	5.4	5.9	.	5.4
Median	6	6	.	6
Count	196	12	0	208

