

California State University, San Bernardino

CSUSB ScholarWorks

Faculty Senate records

Arthur E. Nelson University Archives

6-17-2019

Student Opinion of Teaching Effectiveness (SOTE) - College of Arts & Letters Winter 2019 Term Summary

CSUSB Faculty Senate

Follow this and additional works at: <https://scholarworks.lib.csusb.edu/facultysenate>

Recommended Citation

CSUSB Faculty Senate, "Student Opinion of Teaching Effectiveness (SOTE) - College of Arts & Letters Winter 2019 Term Summary" (2019). *Faculty Senate records*. 228.
<https://scholarworks.lib.csusb.edu/facultysenate/228>

This Report is brought to you for free and open access by the Arthur E. Nelson University Archives at CSUSB ScholarWorks. It has been accepted for inclusion in Faculty Senate records by an authorized administrator of CSUSB ScholarWorks. For more information, please contact scholarworks@csusb.edu.

Student Opinion of Teaching Effectiveness (SOTE)- College of Arts & Letters Winter 2019 Term Summary

1. Rate your interest in the subject matter of this course before you took the class.

	Response by Course Level			
	Lower	Upper	Grad	Total
Very High (1)	25.7%	37.3%	49.5%	31.2%
High (2)	26.2%	27.6%	21.5%	26.7%
Moderately High (3)	20.1%	17.9%	14.0%	19.0%
Moderately Low (4)	10.9%	7.7%	5.6%	9.4%
Low (5)	12.0%	6.7%	3.7%	9.5%
Very Low (6)	5.1%	2.8%	5.6%	4.1%
Mean	2.7	2.3	2.1	2.5
Median	2	2	2	2
Count	3429	2786	107	6322

2. How many class sessions did you attend?

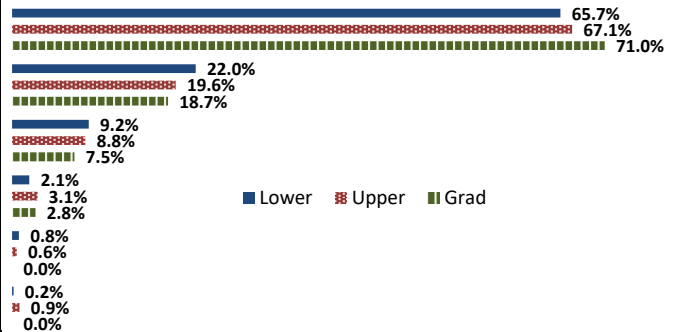
	Response by Course Level			
	Lower	Upper	Grad	Total
All (1)	45.9%	43.8%	38.2%	44.8%
Almost All (2)	49.8%	52.2%	60.8%	51.0%
More than Half (3)	3.7%	3.6%	1.0%	3.6%
Less than Half (4)	0.6%	0.5%	0.0%	0.5%
Mean	1.6	1.6	1.6	1.6
Median	2	2	2	2
Count	3458	2799	102	6359

3. Why did you take this course? Choose all that apply.

	Response by Course Level			
	Lower	Upper	Grad	Total
3a. The course fulfills a general education requirement.	70.2%	40.8%	26.8%	56.6%
3b. The course fulfills a requirement in my major.	24.5%	63.1%	76.8%	42.2%
3c. I have enjoyed the professor's class(es) in the past.	5.0%	13.6%	32.1%	9.2%
3d. The course will improve job/career opportunities.	14.3%	20.0%	33.0%	17.1%
3e. The course sounded interesting to me.	24.3%	33.4%	39.3%	28.5%

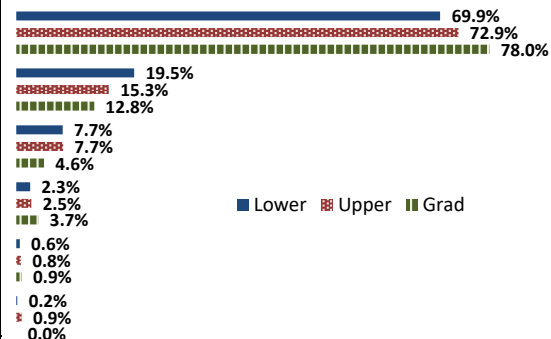
4. How would you rate the overall quality of instruction in this course?

	Response by Course Level			
	Lower	Upper	Grad	Total
Excellent (6)	65.7%	67.1%	71.0%	66.4%
Very Good (5)	22.0%	19.6%	18.7%	20.9%
Good (4)	9.2%	8.8%	7.5%	9.0%
Fair (3)	2.1%	3.1%	2.8%	2.5%
Poor (2)	0.8%	0.6%	0.0%	0.7%
Unsatisfactory (1)	0.2%	0.9%	0.0%	0.5%
Mean	5.5	5.5	5.6	5.5
Median	6	6	6	6
Count	3433	2817	107	6357



5. How would you rate your professor's specific contribution to you learning in this course?

	Response by Course Level			
	Lower	Upper	Grad	Total
Excellent (6)	69.9%	72.9%	78.0%	71.4%
Very Good (5)	19.5%	15.3%	12.8%	17.5%
Good (4)	7.7%	7.7%	4.6%	7.6%
Fair (3)	2.3%	2.5%	3.7%	2.4%
Poor (2)	0.6%	0.8%	0.9%	0.7%
Unsatisfactory (1)	0.2%	0.9%	0.0%	0.5%
Mean	5.6	5.5	5.6	5.5
Median	6	6	6	6
Count	3465	2837	109	6411



Student Opinion of Teaching Effectiveness (SOTE)- College of Business and Public Administration Winter 2019 Term Summary

1. Rate your interest in the subject matter of this course before you took the class.

	Response by Course Level			
	Lower	Upper	Grad	Total
Very High (1)	26.4%	33.2%	37.0%	32.0%
High (2)	26.5%	27.6%	29.3%	27.5%
Moderately High (3)	20.5%	19.5%	16.4%	19.5%
Moderately Low (4)	11.5%	8.8%	7.9%	9.3%
Low (5)	11.2%	7.8%	7.0%	8.5%
Very Low (6)	4.1%	3.0%	2.5%	3.2%
Mean	2.7	2.4	2.3	2.4
Median	2	2	2	2
Count	1031	3210	403	4644

2. How many class sessions did you attend?

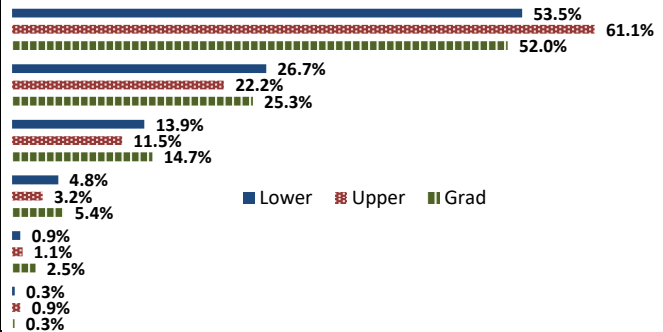
	Response by Course Level			
	Lower	Upper	Grad	Total
All (1)	60.6%	55.6%	68.5%	57.8%
Almost All (2)	36.2%	42.2%	29.5%	39.7%
More than Half (3)	2.8%	1.9%	2.0%	2.1%
Less than Half (4)	0.4%	0.3%	0.0%	0.3%
Mean	1.4	1.5	1.3	1.4
Median	1	1	1	1
Count	1028	3224	403	4655

3. Why did you take this course? Choose all that apply.

	Response by Course Level			
	Lower	Upper	Grad	Total
3a. The course fulfills a general education requirement.	44.2%	29.6%	43.5%	34.0%
3b. The course fulfills a requirement in my major.	59.5%	76.4%	67.2%	71.8%
3c. I have enjoyed the professor's class(es) in the past.	4.4%	6.7%	13.8%	6.8%
3d. The course will improve job/career opportunities.	18.9%	26.6%	31.8%	25.3%
3e. The course sounded interesting to me.	16.7%	15.7%	19.7%	16.3%

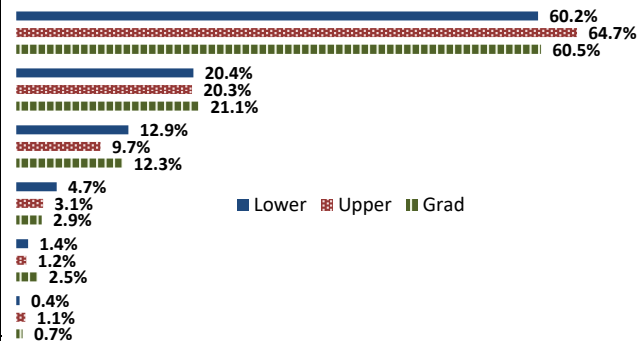
4. How would you rate the overall quality of instruction in this course?

	Response by Course Level			
	Lower	Upper	Grad	Total
Excellent (6)	53.5%	61.1%	52.0%	58.6%
Very Good (5)	26.7%	22.2%	25.3%	23.5%
Good (4)	13.9%	11.5%	14.7%	12.3%
Fair (3)	4.8%	3.2%	5.4%	3.8%
Poor (2)	0.9%	1.1%	2.5%	1.2%
Unsatisfactory (1)	0.3%	0.9%	0.3%	0.7%
Mean	5.3	5.4	5.2	5.3
Median	6	6	6	6
Count	1032	3223	408	4663



5. How would you rate your professor's specific contribution to your learning in this course?

	Response by Course Level			
	Lower	Upper	Grad	Total
Excellent (6)	60.2%	64.7%	60.5%	63.4%
Very Good (5)	20.4%	20.3%	21.1%	20.4%
Good (4)	12.9%	9.7%	12.3%	10.7%
Fair (3)	4.7%	3.1%	2.9%	3.4%
Poor (2)	1.4%	1.2%	2.5%	1.3%
Unsatisfactory (1)	0.4%	1.1%	0.7%	0.9%
Mean	5.3	5.4	5.3	5.4
Median	6	6	6	6
Count	1028	3227	408	4663



Student Opinion of Teaching Effectiveness (SOTE)- College of Education Winter 2019 Term Summary

1. Rate your interest in the subject matter of this course before you took the class.

	Response by Course Level			
	Lower	Upper	Grad	Total
Very High (1)	37.5%	41.0%	47.8%	44.2%
High (2)	45.0%	28.9%	26.7%	28.5%
Moderately High (3)	12.5%	14.5%	12.8%	13.5%
Moderately Low (4)	2.5%	7.0%	6.6%	6.6%
Low (5)	0.0%	4.6%	5.3%	4.7%
Very Low (6)	2.5%	4.1%	0.9%	2.4%
Mean	1.9	2.2	2.0	2.1
Median	2	2	2	2
Count	40	415	454	909

2. How many class sessions did you attend?

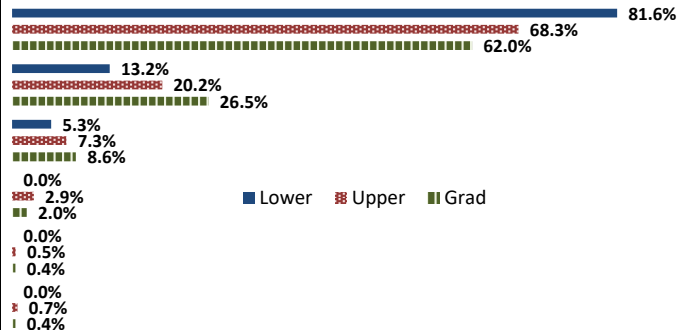
	Response by Course Level			
	Lower	Upper	Grad	Total
All (1)	66.7%	82.4%	83.8%	82.4%
Almost All (2)	33.3%	16.6%	16.0%	17.0%
More than Half (3)	0.0%	1.0%	0.2%	0.6%
Less than Half (4)	0.0%	0.0%	0.0%	0.0%
Mean	1.3	1.2	1.2	1.2
Median	1	1	1	1
Count	39	410	451	900

3. Why did you take this course? Choose all that apply.

	Response by Course Level			
	Lower	Upper	Grad	Total
3a. The course fulfills a general education requirement.	27.5%	32.4%	28.4%	30.2%
3b. The course fulfills a requirement in my major.	90.0%	73.5%	81.9%	78.4%
3c. I have enjoyed the professor's class(es) in the past.	0.0%	7.0%	22.8%	14.6%
3d. The course will improve job/career opportunities.	32.5%	31.0%	31.4%	31.3%
3e. The course sounded interesting to me.	17.5%	12.4%	12.3%	12.6%

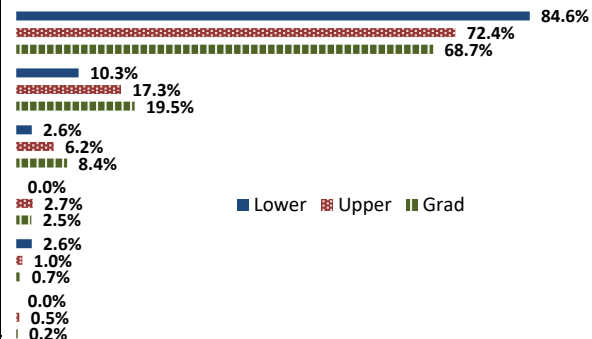
4. How would you rate the overall quality of instruction in this course?

	Response by Course Level			
	Lower	Upper	Grad	Total
Excellent (6)	81.6%	68.3%	62.0%	65.7%
Very Good (5)	13.2%	20.2%	26.5%	23.1%
Good (4)	5.3%	7.3%	8.6%	7.9%
Fair (3)	0.0%	2.9%	2.0%	2.3%
Poor (2)	0.0%	0.5%	0.4%	0.4%
Unsatisfactory (1)	0.0%	0.7%	0.4%	0.6%
Mean	5.8	5.5	5.5	5.5
Median	6	6	6	6
Count	38	410	453	901



5. How would you rate your professor's specific contribution to you learning in this course?

	Response by Course Level			
	Lower	Upper	Grad	Total
Excellent (6)	84.6%	72.4%	68.7%	71.1%
Very Good (5)	10.3%	17.3%	19.5%	18.1%
Good (4)	2.6%	6.2%	8.4%	7.1%
Fair (3)	0.0%	2.7%	2.5%	2.5%
Poor (2)	2.6%	1.0%	0.7%	0.9%
Unsatisfactory (1)	0.0%	0.5%	0.2%	0.3%
Mean	5.7	5.6	5.5	5.5
Median	6	6	6	6
Count	39	405	441	885



Student Opinion of Teaching Effectiveness (SOTE)- College of Natural Sciences Winter 2019 Term Summary

1. Rate your interest in the subject matter of this course before you took the class.

	Response by Course Level			
	Lower	Upper	Grad	Total
Very High (1)	20.9%	37.9%	51.3%	28.0%
High (2)	25.3%	28.1%	25.2%	26.4%
Moderately High (3)	21.9%	17.5%	15.1%	20.1%
Moderately Low (4)	11.5%	7.6%	2.5%	9.8%
Low (5)	13.4%	6.4%	3.4%	10.5%
Very Low (6)	7.0%	2.5%	2.5%	5.2%
Mean	2.9	2.2	1.9	2.6
Median	3	2	1	2
Count	6362	4278	119	10759

2. How many class sessions did you attend?

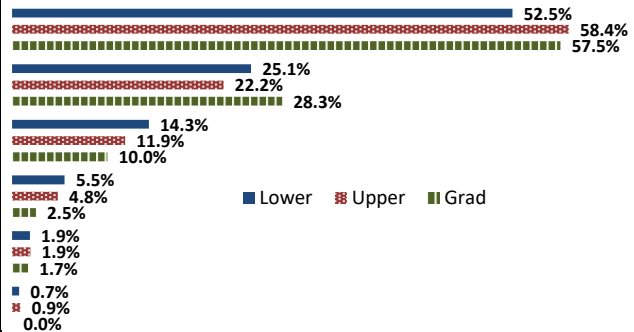
	Response by Course Level			
	Lower	Upper	Grad	Total
All (1)	67.2%	65.2%	73.0%	66.5%
Almost All (2)	30.6%	32.7%	23.8%	31.3%
More than Half (3)	1.8%	1.7%	3.3%	1.8%
Less than Half (4)	0.4%	0.4%	0.0%	0.4%
Mean	1.4	1.4	1.3	1.4
Median	1	1	1	1
Count	6355	4254	122	10731

3. Why did you take this course? Choose all that apply.

	Response by Course Level			
	Lower	Upper	Grad	Total
3a. The course fulfills a general education requirement.	54.8%	26.1%	24.6%	43.1%
3b. The course fulfills a requirement in my major.	51.5%	75.3%	79.4%	61.2%
3c. I have enjoyed the professor's class(es) in the past.	2.8%	10.3%	24.6%	6.0%
3d. The course will improve job/career opportunities.	10.2%	19.9%	35.7%	14.3%
3e. The course sounded interesting to me.	11.0%	17.7%	23.8%	13.8%

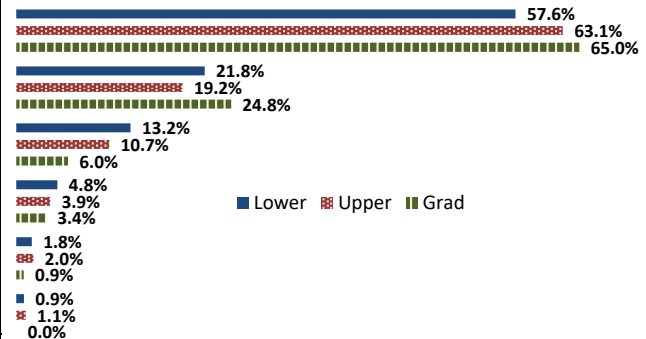
4. How would you rate the overall quality of instruction in this course?

	Response by Course Level			
	Lower	Upper	Grad	Total
Excellent (6)	52.5%	58.4%	57.5%	54.9%
Very Good (5)	25.1%	22.2%	28.3%	24.0%
Good (4)	14.3%	11.9%	10.0%	13.3%
Fair (3)	5.5%	4.8%	2.5%	5.2%
Poor (2)	1.9%	1.9%	1.7%	1.9%
Unsatisfactory (1)	0.7%	0.9%	0.0%	0.8%
Mean	5.2	5.3	5.4	5.2
Median	6	6	6	6
Count	6456	4320	120	10896



5. How would you rate your professor's specific contribution to you learning in this course?

	Response by Course Level			
	Lower	Upper	Grad	Total
Excellent (6)	57.6%	63.1%	65.0%	59.9%
Very Good (5)	21.8%	19.2%	24.8%	20.8%
Good (4)	13.2%	10.7%	6.0%	12.1%
Fair (3)	4.8%	3.9%	3.4%	4.4%
Poor (2)	1.8%	2.0%	0.9%	1.9%
Unsatisfactory (1)	0.9%	1.1%	0.0%	1.0%
Mean	5.3	5.3	5.5	5.3
Median	6	6	6	6
Count	6377	4291	117	10785



Student Opinion of Teaching Effectiveness (SOTE)- College of Social and Behavioral Sciences Winter 2019 Term Summary

1. Rate your interest in the subject matter of this course before you took the class.

	Response by Course Level			
	Lower	Upper	Grad	Total
Very High (1)	19.3%	34.5%	47.7%	29.2%
High (2)	27.2%	28.2%	26.4%	27.8%
Moderately High (3)	23.6%	17.5%	14.0%	19.6%
Moderately Low (4)	11.4%	8.3%	6.1%	9.4%
Low (5)	13.7%	7.9%	3.0%	9.9%
Very Low (6)	4.9%	3.6%	2.7%	4.1%
Mean	2.9	2.4	2.0	2.6
Median	3	2	2	2
Count	3308	5131	329	8768

2. How many class sessions did you attend?

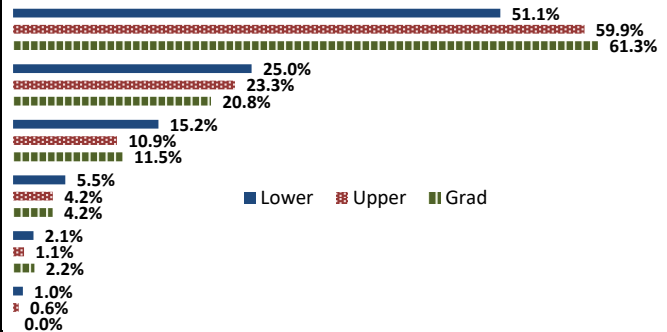
	Response by Course Level			
	Lower	Upper	Grad	Total
All (1)	48.8%	48.0%	70.6%	49.1%
Almost All (2)	46.4%	48.2%	27.9%	46.8%
More than Half (3)	4.0%	3.5%	1.5%	3.6%
Less than Half (4)	0.8%	0.3%	0.0%	0.5%
Mean	1.6	1.6	1.3	1.6
Median	2	2	1	2
Count	3302	5158	330	8790

3. Why did you take this course? Choose all that apply.

	Response by Course Level			
	Lower	Upper	Grad	Total
3a. The course fulfills a general education requirement.	69.8%	35.6%	40.2%	48.8%
3b. The course fulfills a requirement in my major.	31.4%	69.9%	72.0%	55.3%
3c. I have enjoyed the professor's class(es) in the past.	2.4%	12.9%	21.5%	9.2%
3d. The course will improve job/career opportunities.	7.8%	17.6%	36.8%	14.6%
3e. The course sounded interesting to me.	19.0%	31.9%	19.6%	26.5%

4. How would you rate the overall quality of instruction in this course?

	Response by Course Level			
	Lower	Upper	Grad	Total
Excellent (6)	51.1%	59.9%	61.3%	56.7%
Very Good (5)	25.0%	23.3%	20.8%	23.8%
Good (4)	15.2%	10.9%	11.5%	12.5%
Fair (3)	5.5%	4.2%	4.2%	4.7%
Poor (2)	2.1%	1.1%	2.2%	1.6%
Unsatisfactory (1)	1.0%	0.6%	0.0%	0.7%
Mean	5.1	5.3	5.3	5.3
Median	6	6	6	6
Count	3287	5197	313	8797



5. How would you rate your professor's specific contribution to you learning in this course?

	Response by Course Level			
	Lower	Upper	Grad	Total
Excellent (6)	56.7%	65.0%	66.5%	62.0%
Very Good (5)	21.0%	19.5%	20.9%	20.1%
Good (4)	14.3%	10.0%	7.3%	11.5%
Fair (3)	5.0%	4.0%	4.2%	4.4%
Poor (2)	1.9%	1.0%	1.2%	1.3%
Unsatisfactory (1)	1.0%	0.6%	0.0%	0.7%
Mean	5.2	5.4	5.5	5.3
Median	6	6	6	6
Count	3305	5188	331	8824

