

California State University, San Bernardino

**CSUSB ScholarWorks**

---

Faculty Senate records

Arthur E. Nelson University Archives

---

6-14-2017

## **Student Opinion of Teaching Effectiveness (SOTE) - College of Arts & Letters Winter 2017 Term Summary**

CSUSB Faculty Senate

Follow this and additional works at: <https://scholarworks.lib.csusb.edu/facultysenate>

---

### **Recommended Citation**

CSUSB Faculty Senate, "Student Opinion of Teaching Effectiveness (SOTE) - College of Arts & Letters Winter 2017 Term Summary" (2017). *Faculty Senate records*. 227.  
<https://scholarworks.lib.csusb.edu/facultysenate/227>

This Report is brought to you for free and open access by the Arthur E. Nelson University Archives at CSUSB ScholarWorks. It has been accepted for inclusion in Faculty Senate records by an authorized administrator of CSUSB ScholarWorks. For more information, please contact [scholarworks@csusb.edu](mailto:scholarworks@csusb.edu).

## Student Opinion of Teaching Effectiveness (SOTE)- College of Arts & Letters Winter 2017 Term Summary

### 1. Rate your interest in the subject matter of this course before you took the class.

	Response by Course Level			
	Lower	Upper	Grad	Total
Very High (1)	24.5%	37.6%	52.9%	30.8%
High (2)	24.5%	24.5%	19.8%	24.4%
Moderately High (3)	21.8%	18.8%	20.7%	20.5%
Moderately Low (4)	11.5%	8.6%	5.0%	10.1%
Low (5)	12.2%	7.4%	0.8%	9.9%
Very Low (6)	5.5%	3.0%	0.8%	4.3%
Mean	2.8	2.3	1.8	2.6
Median	3	2	1	2
Count	4005	3254	121	7380

### 2. How many class sessions did you attend?

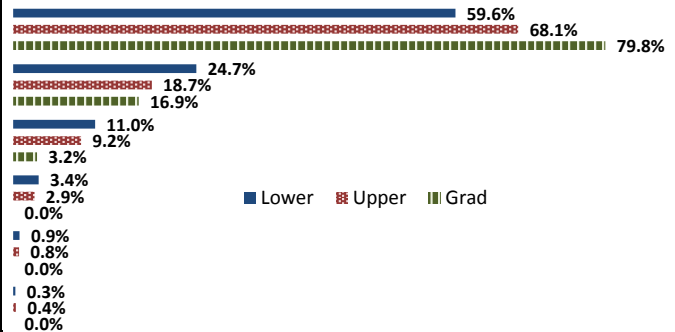
	Response by Course Level			
	Lower	Upper	Grad	Total
All (1)	47.0%	47.3%	52.8%	47.3%
Almost All (2)	49.5%	49.2%	46.4%	49.3%
More than Half (3)	3.2%	3.1%	0.8%	3.1%
Less than Half (4)	0.3%	0.4%	0.0%	0.3%
Mean	1.6	1.6	1.5	1.6
Median	2	2	1	2
Count	3994	3219	125	7338

### 3. Why did you take this course? Choose all that apply.

	Response by Course Level			
	Lower	Upper	Grad	Total
3a. The course fulfills a general education requirement.	71.7%	44.1%	25.8%	58.9%
3b. The course fulfills a requirement in my major.	22.1%	60.7%	69.5%	39.7%
3c. I have enjoyed the professor's class(es) in the past.	5.6%	14.1%	40.6%	9.9%
3d. The course will improve job/career opportunities.	14.8%	20.6%	31.3%	17.6%
3e. The course sounded interesting to me.	24.4%	32.2%	42.2%	28.1%

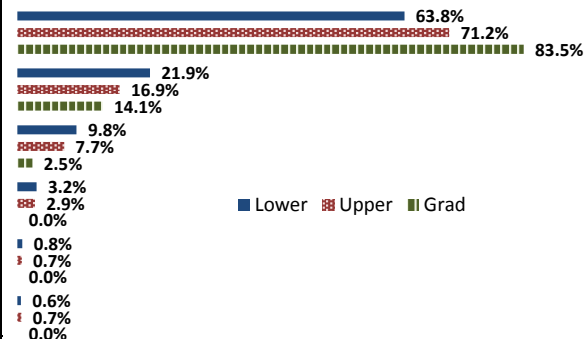
### 4. How would you rate the overall quality of instruction in this course?

	Response by Course Level			
	Lower	Upper	Grad	Total
Excellent (6)	59.6%	68.1%	79.8%	63.7%
Very Good (5)	24.7%	18.7%	16.9%	22.0%
Good (4)	11.0%	9.2%	3.2%	10.1%
Fair (3)	3.4%	2.9%	0.0%	3.1%
Poor (2)	0.9%	0.8%	0.0%	0.8%
Unsatisfactory (1)	0.3%	0.4%	0.0%	0.3%
Mean	5.4	5.5	5.8	5.4
Median	6	6	6	6
Count	4039	3232	124	7395



### 5. How would you rate your professor's specific contribution to you learning in this course?

	Response by Course Level			
	Lower	Upper	Grad	Total
Excellent (6)	63.8%	71.2%	83.5%	67.4%
Very Good (5)	21.9%	16.9%	14.1%	19.5%
Good (4)	9.8%	7.7%	2.5%	8.7%
Fair (3)	3.2%	2.9%	0.0%	3.0%
Poor (2)	0.8%	0.7%	0.0%	0.8%
Unsatisfactory (1)	0.6%	0.7%	0.0%	0.6%
Mean	5.4	5.5	5.8	5.5
Median	6	6	6	6
Count	3995	3216	121	7332



# Student Opinion of Teaching Effectiveness (SOTE)- College of Business and Public Administration Winter 2017 Term Summary

## 1. Rate your interest in the subject matter of this course before you took the class.

	Response by Course Level			
	Lower	Upper	Grad	Total
Very High (1)	21.9%	30.5%	29.7%	28.5%
High (2)	26.7%	27.8%	29.7%	27.7%
Moderately High (3)	21.1%	19.9%	22.7%	20.5%
Moderately Low (4)	13.3%	9.8%	10.0%	10.6%
Low (5)	11.5%	8.7%	5.6%	9.0%
Very Low (6)	5.5%	3.4%	2.3%	3.7%
Mean	2.8	2.5	2.4	2.6
Median	3	2	2	2
Count	1022	3225	431	4678

## 2. How many class sessions did you attend?

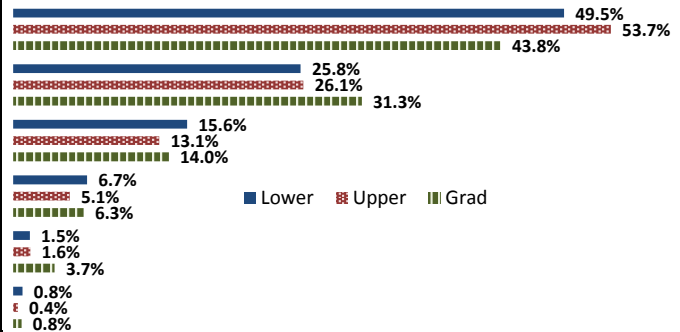
	Response by Course Level			
	Lower	Upper	Grad	Total
All (1)	56.4%	59.1%	67.5%	59.4%
Almost All (2)	38.5%	38.6%	29.3%	37.5%
More than Half (3)	3.6%	2.1%	2.3%	2.4%
Less than Half (4)	1.5%	0.3%	0.9%	0.6%
Mean	1.5	1.4	1.4	1.4
Median	1	1	1	1
Count	1048	3359	533	4940

## 3. Why did you take this course? Choose all that apply.

	Response by Course Level			
	Lower	Upper	Grad	Total
3a. The course fulfills a general education requirement.	34.3%	25.2%	39.9%	28.8%
3b. The course fulfills a requirement in my major.	65.9%	77.6%	71.4%	74.4%
3c. I have enjoyed the professor's class(es) in the past.	4.5%	7.3%	7.9%	6.8%
3d. The course will improve job/career opportunities.	20.5%	25.6%	33.1%	25.3%
3e. The course sounded interesting to me.	12.4%	15.0%	20.2%	14.9%

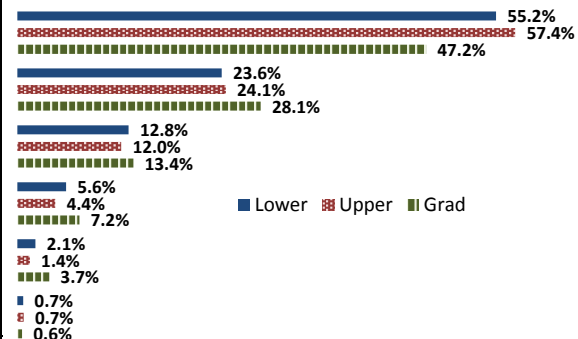
## 4. How would you rate the overall quality of instruction in this course?

	Response by Course Level			
	Lower	Upper	Grad	Total
Excellent (6)	49.5%	53.7%	43.8%	51.8%
Very Good (5)	25.8%	26.1%	31.3%	26.6%
Good (4)	15.6%	13.1%	14.0%	13.8%
Fair (3)	6.7%	5.1%	6.3%	5.6%
Poor (2)	1.5%	1.6%	3.7%	1.8%
Unsatisfactory (1)	0.8%	0.4%	0.8%	0.5%
Mean	5.1	5.2	5.0	5.2
Median	5	6	5	6
Count	1068	3365	536	4969



## 5. How would you rate your professor's specific contribution to you learning in this course?

	Response by Course Level			
	Lower	Upper	Grad	Total
Excellent (6)	55.2%	57.4%	47.2%	55.8%
Very Good (5)	23.6%	24.1%	28.1%	24.4%
Good (4)	12.8%	12.0%	13.4%	12.3%
Fair (3)	5.6%	4.4%	7.2%	4.9%
Poor (2)	2.1%	1.4%	3.7%	1.8%
Unsatisfactory (1)	0.7%	0.7%	0.6%	0.7%
Mean	5.2	5.3	5.1	5.3
Median	5	6	5	6
Count	1052	3339	545	4936



## Student Opinion of Teaching Effectiveness (SOTE)- College of Education Winter 2017 Term Summary

### 1. Rate your interest in the subject matter of this course before you took the class.

	Response by Course Level			
	Lower	Upper	Grad	Total
Very High (1)	58.8%	42.4%	50.7%	48.1%
High (2)	17.7%	26.7%	24.4%	25.0%
Moderately High (3)	14.7%	18.2%	15.9%	16.6%
Moderately Low (4)	5.9%	8.3%	4.8%	6.0%
Low (5)	2.9%	3.3%	3.1%	3.2%
Very Low (6)	0.0%	1.1%	1.2%	1.2%
Mean	1.8	2.1	1.9	1.9
Median	1	2	1	2
Count	34	363	649	1046

### 2. How many class sessions did you attend?

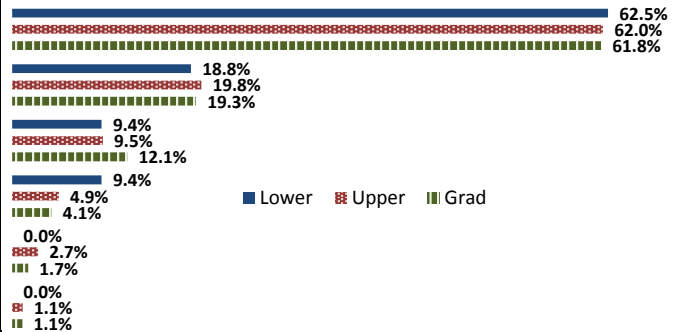
	Response by Course Level			
	Lower	Upper	Grad	Total
All (1)	60.0%	81.0%	78.4%	78.7%
Almost All (2)	40.0%	19.1%	21.0%	21.0%
More than Half (3)	0.0%	0.0%	0.5%	0.3%
Less than Half (4)	0.0%	0.0%	0.2%	0.1%
Mean	1.4	1.2	1.2	1.2
Median	1	1	1	1
Count	35	357	648	1040

### 3. Why did you take this course? Choose all that apply.

	Response by Course Level			
	Lower	Upper	Grad	Total
3a. The course fulfills a general education requirement.	41.7%	21.6%	25.6%	24.8%
3b. The course fulfills a requirement in my major.	77.8%	78.2%	83.2%	81.3%
3c. I have enjoyed the professor's class(es) in the past.	5.6%	11.1%	19.3%	16.0%
3d. The course will improve job/career opportunities.	22.2%	32.6%	29.2%	30.1%
3e. The course sounded interesting to me.	11.1%	11.3%	14.9%	13.5%

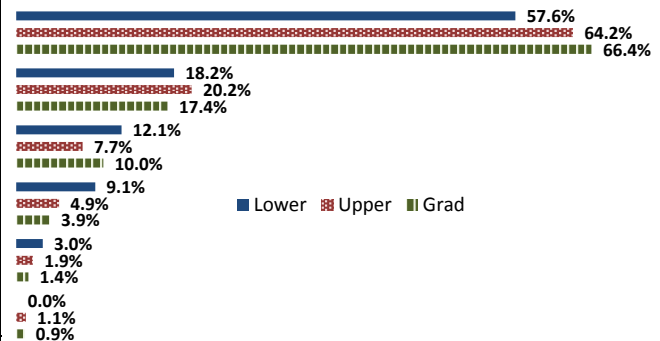
### 4. How would you rate the overall quality of instruction in this course?

	Response by Course Level			
	Lower	Upper	Grad	Total
Excellent (6)	62.5%	62.0%	61.8%	61.9%
Very Good (5)	18.8%	19.8%	19.3%	19.5%
Good (4)	9.4%	9.5%	12.1%	11.1%
Fair (3)	9.4%	4.9%	4.1%	4.6%
Poor (2)	0.0%	2.7%	1.7%	2.0%
Unsatisfactory (1)	0.0%	1.1%	1.1%	1.0%
Mean	5.3	5.3	5.3	5.3
Median	6	6	6	6
Count	32	368	654	1054



### 5. How would you rate your professor's specific contribution to you learning in this course?

	Response by Course Level			
	Lower	Upper	Grad	Total
Excellent (6)	57.6%	64.2%	66.4%	65.3%
Very Good (5)	18.2%	20.2%	17.4%	18.4%
Good (4)	12.1%	7.7%	10.0%	9.3%
Fair (3)	9.1%	4.9%	3.9%	4.4%
Poor (2)	3.0%	1.9%	1.4%	1.6%
Unsatisfactory (1)	0.0%	1.1%	0.9%	1.0%
Mean	5.2	5.4	5.4	5.4
Median	6	6	6	6
Count	33	366	648	1047



## Student Opinion of Teaching Effectiveness (SOTE)- College of Natural Sciences Winter 2017 Term Summary

### 1. Rate your interest in the subject matter of this course before you took the class.

	Response by Course Level			
	Lower	Upper	Grad	Total
Very High (1)	22.1%	34.4%	38.6%	26.9%
High (2)	24.8%	28.7%	26.0%	26.3%
Moderately High (3)	21.5%	19.3%	20.5%	20.7%
Moderately Low (4)	11.4%	8.3%	4.7%	10.2%
Low (5)	12.8%	6.2%	6.3%	10.3%
Very Low (6)	7.4%	3.1%	3.9%	5.8%
Mean	2.9	2.3	2.3	2.7
Median	3	2	2	2
Count	13452	8222	254	21928

### 2. How many class sessions did you attend?

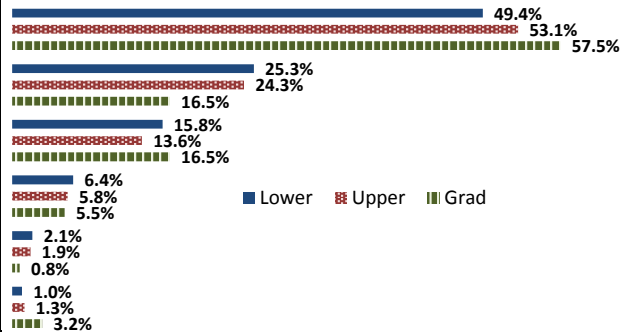
	Response by Course Level			
	Lower	Upper	Grad	Total
All (1)	66.8%	61.9%	69.1%	65.0%
Almost All (2)	30.3%	35.3%	30.2%	32.1%
More than Half (3)	2.4%	2.2%	0.8%	2.3%
Less than Half (4)	0.6%	0.6%	0.0%	0.6%
Mean	1.4	1.4	1.3	1.4
Median	1	1	1	1
Count	13394	8148	252	21794

### 3. Why did you take this course? Choose all that apply.

	Response by Course Level			
	Lower	Upper	Grad	Total
3a. The course fulfills a general education requirement.	55.4%	25.7%	22.5%	43.9%
3b. The course fulfills a requirement in my major.	52.4%	77.2%	77.5%	61.9%
3c. I have enjoyed the professor's class(es) in the past.	3.1%	12.4%	16.3%	6.7%
3d. The course will improve job/career opportunities.	11.9%	20.7%	20.2%	15.2%
3e. The course sounded interesting to me.	11.5%	20.4%	15.5%	14.9%

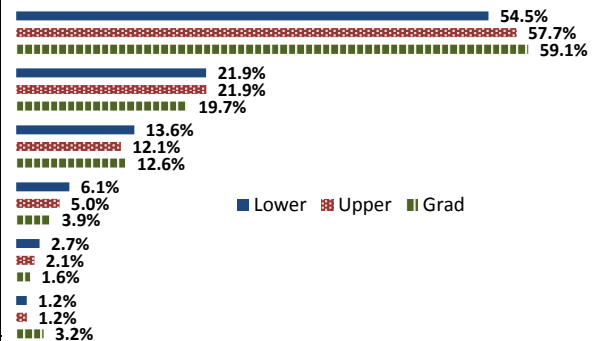
### 4. How would you rate the overall quality of instruction in this course?

	Response by Course Level			
	Lower	Upper	Grad	Total
Excellent (6)	49.4%	53.1%	57.5%	50.8%
Very Good (5)	25.3%	24.3%	16.5%	24.9%
Good (4)	15.8%	13.6%	16.5%	15.0%
Fair (3)	6.4%	5.8%	5.5%	6.2%
Poor (2)	2.1%	1.9%	0.8%	2.0%
Unsatisfactory (1)	1.0%	1.3%	3.2%	1.2%
Mean	5.1	5.2	5.1	5.1
Median	5	6	6	6
Count	13568	8242	254	22064



### 5. How would you rate your professor's specific contribution to you learning in this course?

	Response by Course Level			
	Lower	Upper	Grad	Total
Excellent (6)	54.5%	57.7%	59.1%	55.8%
Very Good (5)	21.9%	21.9%	19.7%	21.9%
Good (4)	13.6%	12.1%	12.6%	13.0%
Fair (3)	6.1%	5.0%	3.9%	5.7%
Poor (2)	2.7%	2.1%	1.6%	2.4%
Unsatisfactory (1)	1.2%	1.2%	3.2%	1.2%
Mean	5.2	5.2	5.2	5.2
Median	5	6	6	6
Count	13516	8192	254	21962



# Student Opinion of Teaching Effectiveness (SOTE)- College of Social and Behavioral Sciences Winter 2017 Term Summary

## 1. Rate your interest in the subject matter of this course before you took the class.

	Response by Course Level			
	Lower	Upper	Grad	Total
Very High (1)	20.5%	32.6%	38.6%	28.0%
High (2)	24.6%	27.7%	30.9%	26.6%
Moderately High (3)	23.3%	19.0%	17.6%	20.7%
Moderately Low (4)	12.4%	8.5%	9.3%	10.0%
Low (5)	13.7%	8.3%	1.9%	10.3%
Very Low (6)	5.5%	3.9%	1.9%	4.5%
Mean	2.9	2.4	2.1	2.6
Median	3	2	2	2
Count	4078	5884	324	10286

## 2. How many class sessions did you attend?

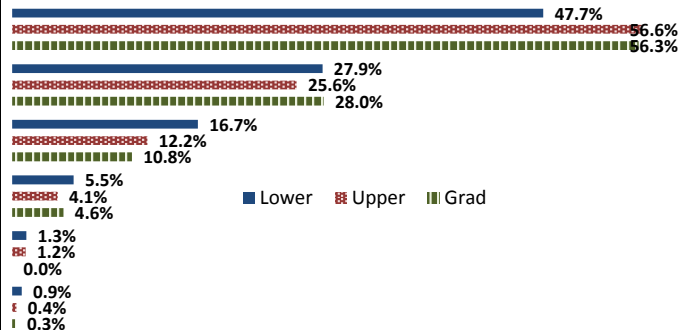
	Response by Course Level			
	Lower	Upper	Grad	Total
All (1)	50.2%	53.0%	60.9%	52.2%
Almost All (2)	45.3%	43.2%	37.5%	43.9%
More than Half (3)	3.6%	3.2%	1.2%	3.3%
Less than Half (4)	0.9%	0.5%	0.3%	0.7%
Mean	1.6	1.5	1.4	1.5
Median	1	1	1	1
Count	4087	5857	325	10269

## 3. Why did you take this course? Choose all that apply.

	Response by Course Level			
	Lower	Upper	Grad	Total
3a. The course fulfills a general education requirement.	71.2%	35.4%	35.6%	49.6%
3b. The course fulfills a requirement in my major.	30.8%	69.7%	74.9%	54.4%
3c. I have enjoyed the professor's class(es) in the past.	3.1%	12.8%	20.1%	9.2%
3d. The course will improve job/career opportunities.	9.4%	20.7%	32.4%	16.6%
3e. The course sounded interesting to me.	21.1%	32.8%	26.5%	28.0%

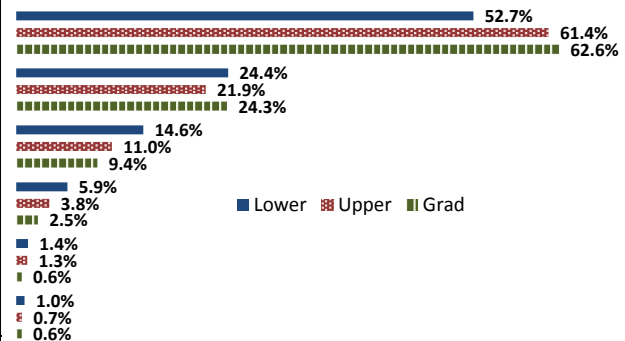
## 4. How would you rate the overall quality of instruction in this course?

	Response by Course Level			
	Lower	Upper	Grad	Total
Excellent (6)	47.7%	56.6%	56.3%	53.1%
Very Good (5)	27.9%	25.6%	28.0%	26.6%
Good (4)	16.7%	12.2%	10.8%	13.9%
Fair (3)	5.5%	4.1%	4.6%	4.7%
Poor (2)	1.3%	1.2%	0.0%	1.2%
Unsatisfactory (1)	0.9%	0.4%	0.3%	0.6%
Mean	5.1	5.3	5.4	5.2
Median	5	6	6	6
Count	4089	5926	325	10340



## 5. How would you rate your professor's specific contribution to you learning in this course?

	Response by Course Level			
	Lower	Upper	Grad	Total
Excellent (6)	52.7%	61.4%	62.6%	58.0%
Very Good (5)	24.4%	21.9%	24.3%	23.0%
Good (4)	14.6%	11.0%	9.4%	12.4%
Fair (3)	5.9%	3.8%	2.5%	4.6%
Poor (2)	1.4%	1.3%	0.6%	1.3%
Unsatisfactory (1)	1.0%	0.7%	0.6%	0.8%
Mean	5.2	5.4	5.4	5.3
Median	5	6	6	6
Count	4044	5891	321	10256



## Student Opinion of Teaching Effectiveness (SOTE)- College of University Studies Winter 2017 Term Summary

### 1. Rate your interest in the subject matter of this course before you took the class.

	Response by Course Level			
	Lower	Upper	Grad	Total
Very High (1)	22.2%	0.0%	0.0%	22.2%
High (2)	29.6%	0.0%	0.0%	29.6%
Moderately High (3)	14.8%	0.0%	0.0%	14.8%
Moderately Low (4)	3.7%	0.0%	0.0%	3.7%
Low (5)	14.8%	0.0%	0.0%	14.8%
Very Low (6)	14.8%	0.0%	0.0%	14.8%
Mean	3.0	.	.	3.0
Median	2	.	.	2
Count	27	0	0	27

### 2. How many class sessions did you attend?

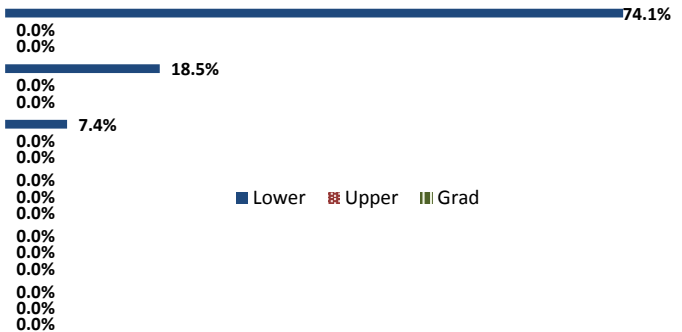
	Response by Course Level			
	Lower	Upper	Grad	Total
All (1)	38.5%	0.0%	0.0%	38.5%
Almost All (2)	57.7%	0.0%	0.0%	57.7%
More than Half (3)	3.9%	0.0%	0.0%	3.9%
Less than Half (4)	0.0%	0.0%	0.0%	0.0%
Mean	1.7	.	.	1.7
Median	2	.	.	2
Count	26	0	0	26

### 3. Why did you take this course? Choose all that apply.

	Response by Course Level			
	Lower	Upper	Grad	Total
3a. The course fulfills a general education requirement.	10.3%	0.0%	0.0%	10.3%
3b. The course fulfills a requirement in my major.	13.8%	0.0%	0.0%	13.8%
3c. I have enjoyed the professor's class(es) in the past.	0.0%	0.0%	0.0%	0.0%
3d. The course will improve job/career opportunities.	17.2%	0.0%	0.0%	17.2%
3e. The course sounded interesting to me.	17.2%	0.0%	0.0%	17.2%

### 4. How would you rate the overall quality of instruction in this course?

	Response by Course Level			
	Lower	Upper	Grad	Total
Excellent (6)	74.1%	0.0%	0.0%	74.1%
Very Good (5)	18.5%	0.0%	0.0%	18.5%
Good (4)	7.4%	0.0%	0.0%	7.4%
Fair (3)	0.0%	0.0%	0.0%	0.0%
Poor (2)	0.0%	0.0%	0.0%	0.0%
Unsatisfactory (1)	0.0%	0.0%	0.0%	0.0%
Mean	5.7	.	.	5.7
Median	6	.	.	6
Count	27	0	0	27



### 5. How would you rate your professor's specific contribution to you learning in this course?

	Response by Course Level			
	Lower	Upper	Grad	Total
Excellent (6)	82.1%	0.0%	0.0%	82.1%
Very Good (5)	10.7%	0.0%	0.0%	10.7%
Good (4)	7.1%	0.0%	0.0%	7.1%
Fair (3)	0.0%	0.0%	0.0%	0.0%
Poor (2)	0.0%	0.0%	0.0%	0.0%
Unsatisfactory (1)	0.0%	0.0%	0.0%	0.0%
Mean	5.8	.	.	5.8
Median	6	.	.	6
Count	28	0	0	28

