

California State University, San Bernardino

CSUSB ScholarWorks

Faculty Senate records

Arthur E. Nelson University Archives

6-2-2016

Student Opinion of Teaching Effectiveness (SOTE) - College of Arts & Letters Winter 2016 Term Summary

CSUSB Faculty Senate

Follow this and additional works at: <https://scholarworks.lib.csusb.edu/facultysenate>

Recommended Citation

CSUSB Faculty Senate, "Student Opinion of Teaching Effectiveness (SOTE) - College of Arts & Letters Winter 2016 Term Summary" (2016). *Faculty Senate records*. 226.
<https://scholarworks.lib.csusb.edu/facultysenate/226>

This Report is brought to you for free and open access by the Arthur E. Nelson University Archives at CSUSB ScholarWorks. It has been accepted for inclusion in Faculty Senate records by an authorized administrator of CSUSB ScholarWorks. For more information, please contact scholarworks@csusb.edu.

Student Opinion of Teaching Effectiveness (SOTE)- College of Arts & Letters Winter 2016 Term Summary

1. Rate your interest in the subject matter of this course before you took the class.

	Response by Course Level			
	Lower	Upper	Grad	Total
Very High (1)	24.6%	38.2%	52.8%	30.2%
High (2)	26.4%	24.5%	20.9%	25.6%
Moderately High (3)	23.7%	19.9%	14.7%	22.1%
Moderately Low (4)	10.6%	8.3%	7.4%	9.7%
Low (5)	10.6%	6.4%	2.5%	8.9%
Very Low (6)	4.1%	2.7%	1.8%	3.6%
Mean	2.7	2.3	1.9	2.5
Median	2	2	1	2
Count	5542	3422	163	9127

2. How many class sessions did you attend?

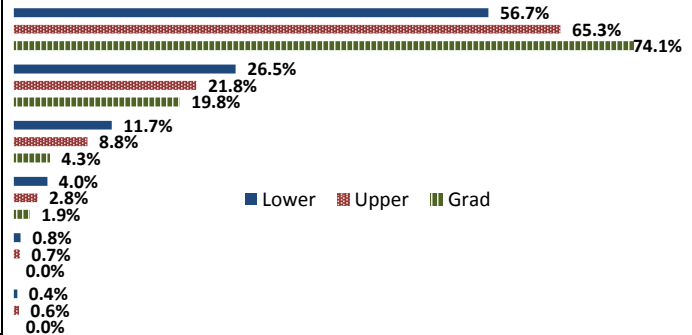
	Response by Course Level			
	Lower	Upper	Grad	Total
All (1)	48.3%	49.7%	57.1%	49.0%
Almost All (2)	47.6%	47.4%	42.9%	47.5%
More than Half (3)	3.6%	2.6%	0.0%	3.2%
Less than Half (4)	0.5%	0.2%	0.0%	0.4%
Mean	1.6	1.5	1.4	1.5
Median	1	1	1	1
Count	5547	3416	163	9126

3. Why did you take this course? Choose all that apply.

	Response by Course Level			
	Lower	Upper	Grad	Total
3a. The course fulfills a general education requirement.	74.2%	39.4%	34.3%	60.6%
3b. The course fulfills a requirement in my major.	21.7%	63.9%	68.7%	38.2%
3c. I have enjoyed the professor's class(es) in the past.	6.4%	14.9%	30.7%	10.0%
3d. The course will improve job/career opportunities.	14.8%	22.9%	31.3%	18.1%
3e. The course sounded interesting to me.	21.8%	35.5%	45.2%	27.3%

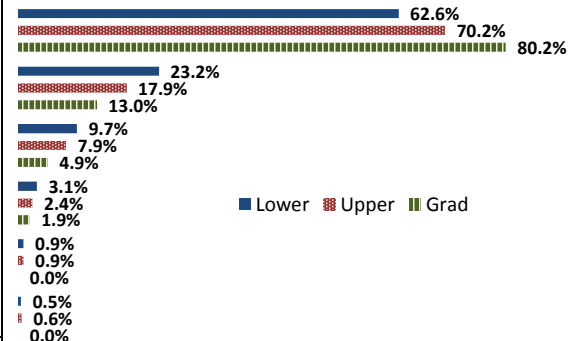
4. How would you rate the overall quality of instruction in this course?

	Response by Course Level			
	Lower	Upper	Grad	Total
Excellent (6)	56.7%	65.3%	74.1%	60.2%
Very Good (5)	26.5%	21.8%	19.8%	24.6%
Good (4)	11.7%	8.8%	4.3%	10.5%
Fair (3)	4.0%	2.8%	1.9%	3.5%
Poor (2)	0.8%	0.7%	0.0%	0.7%
Unsatisfactory (1)	0.4%	0.6%	0.0%	0.4%
Mean	5.3	5.5	5.7	5.4
Median	6	6	6	6
Count	5582	3401	162	9145



5. How would you rate your professor's specific contribution to you learning in this course?

	Response by Course Level			
	Lower	Upper	Grad	Total
Excellent (6)	62.6%	70.2%	80.2%	65.8%
Very Good (5)	23.2%	17.9%	13.0%	21.1%
Good (4)	9.7%	7.9%	4.9%	8.9%
Fair (3)	3.1%	2.4%	1.9%	2.8%
Poor (2)	0.9%	0.9%	0.0%	0.9%
Unsatisfactory (1)	0.5%	0.6%	0.0%	0.5%
Mean	5.4	5.5	5.7	5.5
Median	6	6	6	6
Count	5517	3398	162	9077



Student Opinion of Teaching Effectiveness (SOTE)- College of Business and Public Administration Winter 2016 Term Summary

1. Rate your interest in the subject matter of this course before you took the class.

	Response by Course Level			
	Lower	Upper	Grad	Total
Very High (1)	19.4%	31.1%	34.8%	29.0%
High (2)	25.1%	27.3%	27.4%	26.8%
Moderately High (3)	24.2%	22.5%	18.5%	22.3%
Moderately Low (4)	12.4%	9.7%	10.0%	10.4%
Low (5)	13.1%	6.4%	6.5%	7.9%
Very Low (6)	5.8%	3.0%	2.8%	3.6%
Mean	2.9	2.4	2.3	2.5
Median	3	2	2	2
Count	972	2916	569	4457

2. How many class sessions did you attend?

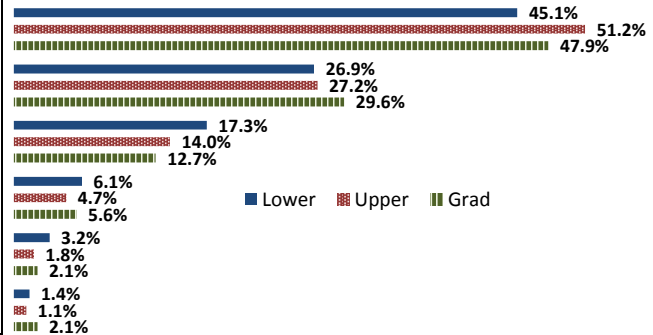
	Response by Course Level			
	Lower	Upper	Grad	Total
All (1)	58.9%	57.1%	75.0%	59.8%
Almost All (2)	36.1%	40.5%	23.1%	37.3%
More than Half (3)	3.6%	1.9%	1.2%	2.2%
Less than Half (4)	1.3%	0.5%	0.7%	0.7%
Mean	1.5	1.5	1.3	1.4
Median	1	1	1	1
Count	967	2907	567	4441

3. Why did you take this course? Choose all that apply.

	Response by Course Level			
	Lower	Upper	Grad	Total
3a. The course fulfills a general education requirement.	42.1%	24.6%	38.6%	30.2%
3b. The course fulfills a requirement in my major.	67.8%	81.3%	72.5%	77.3%
3c. I have enjoyed the professor's class(es) in the past.	2.4%	6.4%	9.9%	6.0%
3d. The course will improve job/career opportunities.	22.2%	26.2%	30.4%	25.9%
3e. The course sounded interesting to me.	14.8%	17.1%	14.3%	16.2%

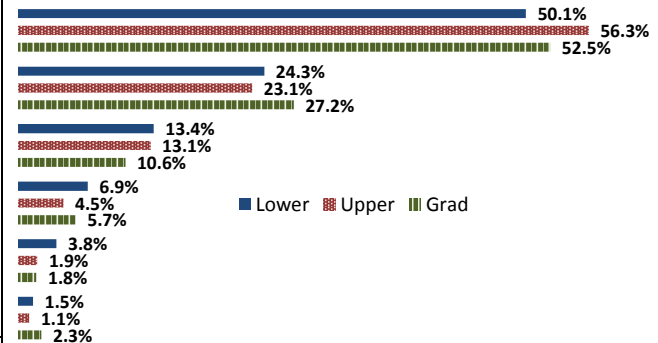
4. How would you rate the overall quality of instruction in this course?

	Response by Course Level			
	Lower	Upper	Grad	Total
Excellent (6)	45.1%	51.2%	47.9%	49.5%
Very Good (5)	26.9%	27.2%	29.6%	27.4%
Good (4)	17.3%	14.0%	12.7%	14.5%
Fair (3)	6.1%	4.7%	5.6%	5.1%
Poor (2)	3.2%	1.8%	2.1%	2.2%
Unsatisfactory (1)	1.4%	1.1%	2.1%	1.3%
Mean	5.0	5.2	5.1	5.1
Median	5	6	5	5
Count	973	2922	574	4469



5. How would you rate your professor's specific contribution to you learning in this course?

	Response by Course Level			
	Lower	Upper	Grad	Total
Excellent (6)	50.1%	56.3%	52.5%	54.4%
Very Good (5)	24.3%	23.1%	27.2%	23.9%
Good (4)	13.4%	13.1%	10.6%	12.8%
Fair (3)	6.9%	4.5%	5.7%	5.2%
Poor (2)	3.8%	1.9%	1.8%	2.3%
Unsatisfactory (1)	1.5%	1.1%	2.3%	1.4%
Mean	5.1	5.2	5.2	5.2
Median	6	6	6	6
Count	969	2890	566	4425



Student Opinion of Teaching Effectiveness (SOTE)- College of Education Winter 2016 Term Summary

1. Rate your interest in the subject matter of this course before you took the class.

	Response by Course Level			
	Lower	Upper	Grad	Total
Very High (1)	34.5%	40.4%	43.5%	41.8%
High (2)	37.9%	29.4%	28.8%	29.5%
Moderately High (3)	13.8%	17.9%	16.1%	16.8%
Moderately Low (4)	3.4%	6.6%	4.8%	5.5%
Low (5)	8.6%	4.1%	4.8%	4.6%
Very Low (6)	1.7%	1.5%	2.0%	1.8%
Mean	2.2	2.1	2.0	2.1
Median	2	2	2	2
Count	58	653	735	1446

2. How many class sessions did you attend?

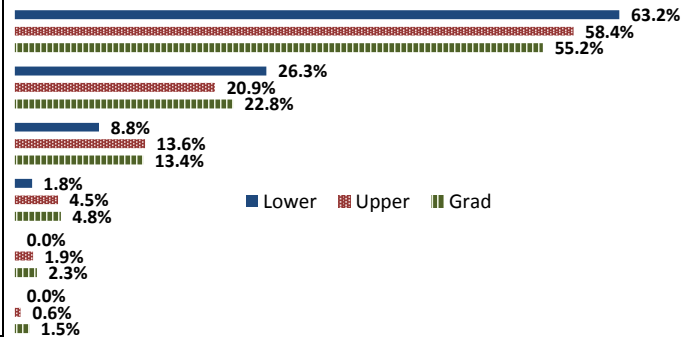
	Response by Course Level			
	Lower	Upper	Grad	Total
All (1)	81.0%	82.9%	74.4%	78.5%
Almost All (2)	17.2%	17.1%	24.7%	21.0%
More than Half (3)	0.0%	0.0%	0.5%	0.3%
Less than Half (4)	1.7%	0.0%	0.4%	0.3%
Mean	1.2	1.2	1.3	1.2
Median	1	1	1	1
Count	58	651	742	1451

3. Why did you take this course? Choose all that apply.

	Response by Course Level			
	Lower	Upper	Grad	Total
3a. The course fulfills a general education requirement.	33.3%	32.9%	26.0%	29.4%
3b. The course fulfills a requirement in my major.	76.7%	73.8%	84.5%	79.4%
3c. I have enjoyed the professor's class(es) in the past.	11.7%	12.3%	15.9%	14.1%
3d. The course will improve job/career opportunities.	25.0%	35.9%	34.1%	34.6%
3e. The course sounded interesting to me.	28.3%	11.7%	14.3%	13.7%

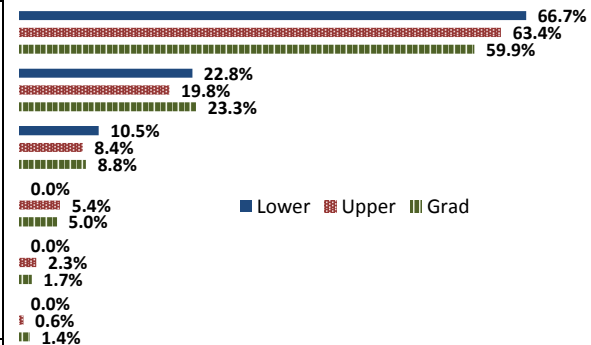
4. How would you rate the overall quality of instruction in this course?

	Response by Course Level			
	Lower	Upper	Grad	Total
Excellent (6)	63.2%	58.4%	55.2%	57.0%
Very Good (5)	26.3%	20.9%	22.8%	22.1%
Good (4)	8.8%	13.6%	13.4%	13.3%
Fair (3)	1.8%	4.5%	4.8%	4.6%
Poor (2)	0.0%	1.9%	2.3%	2.0%
Unsatisfactory (1)	0.0%	0.6%	1.5%	1.0%
Mean	5.5	5.3	5.2	5.2
Median	6	6	6	6
Count	57	640	746	1443



5. How would you rate your professor's specific contribution to you learning in this course?

	Response by Course Level			
	Lower	Upper	Grad	Total
Excellent (6)	66.7%	63.4%	59.9%	61.7%
Very Good (5)	22.8%	19.8%	23.3%	21.7%
Good (4)	10.5%	8.4%	8.8%	8.6%
Fair (3)	0.0%	5.4%	5.0%	5.0%
Poor (2)	0.0%	2.3%	1.7%	1.9%
Unsatisfactory (1)	0.0%	0.6%	1.4%	1.0%
Mean	5.6	5.3	5.3	5.3
Median	6	6	6	6
Count	57	645	720	1422



Student Opinion of Teaching Effectiveness (SOTE)- College of Natural Sciences Winter 2016 Term Summary

1. Rate your interest in the subject matter of this course before you took the class.

	Response by Course Level			
	Lower	Upper	Grad	Total
Very High (1)	23.8%	35.4%	31.7%	28.1%
High (2)	26.3%	26.2%	36.6%	26.3%
Moderately High (3)	21.6%	19.5%	14.9%	20.8%
Moderately Low (4)	10.8%	8.5%	5.9%	9.9%
Low (5)	11.1%	7.1%	7.9%	9.6%
Very Low (6)	6.5%	3.2%	3.0%	5.3%
Mean	2.8	2.4	2.3	2.6
Median	2	2	2	2
Count	7520	4399	101	12020

2. How many class sessions did you attend?

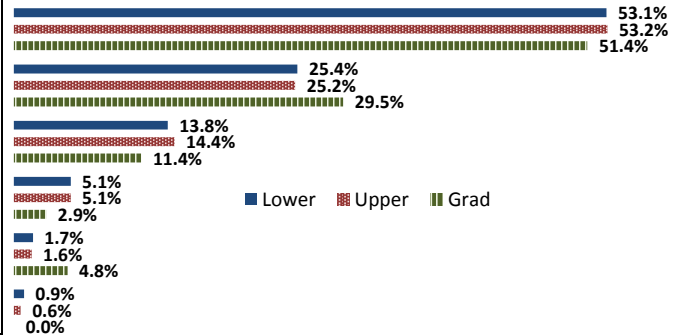
	Response by Course Level			
	Lower	Upper	Grad	Total
All (1)	63.8%	63.4%	65.3%	63.7%
Almost All (2)	33.1%	34.2%	28.7%	33.5%
More than Half (3)	2.6%	2.1%	4.0%	2.4%
Less than Half (4)	0.5%	0.3%	2.0%	0.5%
Mean	1.4	1.4	1.4	1.4
Median	1	1	1	1
Count	7523	4371	101	11995

3. Why did you take this course? Choose all that apply.

	Response by Course Level			
	Lower	Upper	Grad	Total
3a. The course fulfills a general education requirement.	53.9%	25.8%	29.3%	43.5%
3b. The course fulfills a requirement in my major.	50.0%	77.8%	56.9%	60.1%
3c. I have enjoyed the professor's class(es) in the past.	4.3%	11.2%	16.3%	6.9%
3d. The course will improve job/career opportunities.	12.2%	21.4%	13.8%	15.5%
3e. The course sounded interesting to me.	16.1%	20.5%	17.9%	17.7%

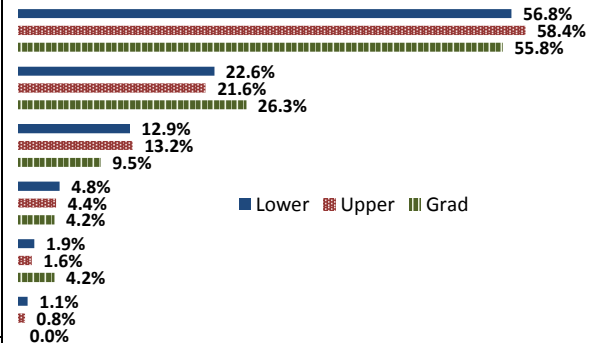
4. How would you rate the overall quality of instruction in this course?

	Response by Course Level			
	Lower	Upper	Grad	Total
Excellent (6)	53.1%	53.2%	51.4%	53.1%
Very Good (5)	25.4%	25.2%	29.5%	25.4%
Good (4)	13.8%	14.4%	11.4%	14.0%
Fair (3)	5.1%	5.1%	2.9%	5.1%
Poor (2)	1.7%	1.6%	4.8%	1.7%
Unsatisfactory (1)	0.9%	0.6%	0.0%	0.8%
Mean	5.2	5.2	5.2	5.2
Median	6	6	6	6
Count	7549	4381	105	12035



5. How would you rate your professor's specific contribution to you learning in this course?

	Response by Course Level			
	Lower	Upper	Grad	Total
Excellent (6)	56.8%	58.4%	55.8%	57.4%
Very Good (5)	22.6%	21.6%	26.3%	22.3%
Good (4)	12.9%	13.2%	9.5%	13.0%
Fair (3)	4.8%	4.4%	4.2%	4.6%
Poor (2)	1.9%	1.6%	4.2%	1.8%
Unsatisfactory (1)	1.1%	0.8%	0.0%	1.0%
Mean	5.2	5.3	5.3	5.3
Median	6	6	6	6
Count	7499	4386	95	11980



Student Opinion of Teaching Effectiveness (SOTE)- College of Social and Behavioral Sciences Winter 2016 Term Summary

1. Rate your interest in the subject matter of this course before you took the class.

	Response by Course Level			
	Lower	Upper	Grad	Total
Very High (1)	18.3%	32.6%	39.2%	27.6%
High (2)	25.2%	27.7%	27.2%	26.7%
Moderately High (3)	24.2%	18.5%	16.9%	20.6%
Moderately Low (4)	12.3%	8.5%	7.6%	9.9%
Low (5)	13.9%	8.5%	6.5%	10.4%
Very Low (6)	6.1%	4.2%	2.5%	4.8%
Mean	3.0	2.5	2.2	2.6
Median	3	2	2	2
Count	3953	5811	602	10366

2. How many class sessions did you attend?

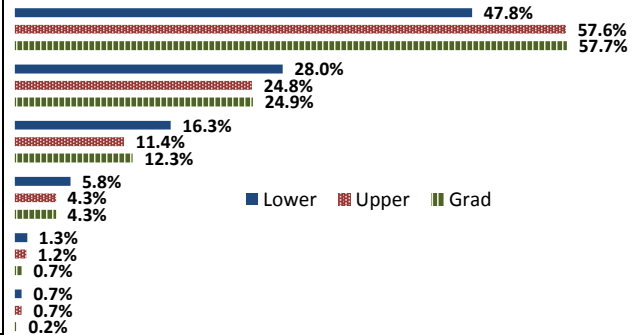
	Response by Course Level			
	Lower	Upper	Grad	Total
All (1)	52.3%	53.4%	58.1%	53.3%
Almost All (2)	42.8%	42.8%	40.9%	42.7%
More than Half (3)	4.1%	3.2%	0.8%	3.4%
Less than Half (4)	0.8%	0.6%	0.2%	0.6%
Mean	1.5	1.5	1.4	1.5
Median	1	1	1	1
Count	3972	5814	602	10388

3. Why did you take this course? Choose all that apply.

	Response by Course Level			
	Lower	Upper	Grad	Total
3a. The course fulfills a general education requirement.	66.4%	32.3%	31.9%	45.9%
3b. The course fulfills a requirement in my major.	27.0%	69.8%	79.9%	53.3%
3c. I have enjoyed the professor's class(es) in the past.	3.3%	13.4%	14.4%	9.4%
3d. The course will improve job/career opportunities.	9.6%	20.5%	29.1%	16.6%
3e. The course sounded interesting to me.	18.1%	33.4%	20.1%	26.5%

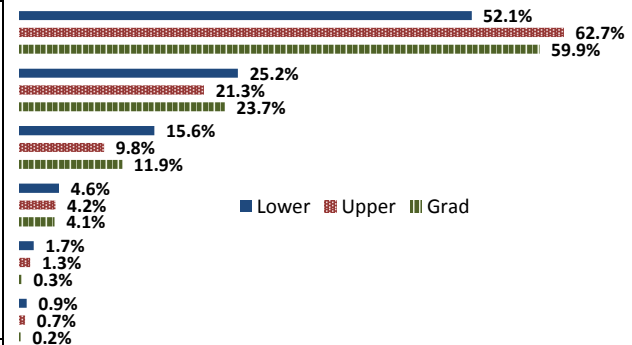
4. How would you rate the overall quality of instruction in this course?

	Response by Course Level			
	Lower	Upper	Grad	Total
Excellent (6)	47.8%	57.6%	57.7%	53.9%
Very Good (5)	28.0%	24.8%	24.9%	26.0%
Good (4)	16.3%	11.4%	12.3%	13.3%
Fair (3)	5.8%	4.3%	4.3%	4.9%
Poor (2)	1.3%	1.2%	0.7%	1.2%
Unsatisfactory (1)	0.7%	0.7%	0.2%	0.7%
Mean	5.1	5.3	5.3	5.2
Median	5	6	6	6
Count	3961	5841	610	10412



5. How would you rate your professor's specific contribution to you learning in this course?

	Response by Course Level			
	Lower	Upper	Grad	Total
Excellent (6)	52.1%	62.7%	59.9%	58.5%
Very Good (5)	25.2%	21.3%	23.7%	22.9%
Good (4)	15.6%	9.8%	11.9%	12.1%
Fair (3)	4.6%	4.2%	4.1%	4.3%
Poor (2)	1.7%	1.3%	0.3%	1.4%
Unsatisfactory (1)	0.9%	0.7%	0.2%	0.7%
Mean	5.2	5.4	5.4	5.3
Median	6	6	6	6
Count	3948	5808	613	10369



Student Opinion of Teaching Effectiveness (SOTE)- College of University Studies Winter 2016 Term Summary

1. Rate your interest in the subject matter of this course before you took the class.

	Response by Course Level			
	Lower	Upper	Grad	Total
Very High (1)	24.6%	0.0%	0.0%	24.6%
High (2)	24.2%	0.0%	0.0%	24.2%
Moderately High (3)	20.4%	0.0%	0.0%	20.4%
Moderately Low (4)	10.0%	0.0%	0.0%	10.0%
Low (5)	13.7%	0.0%	0.0%	13.7%
Very Low (6)	7.1%	0.0%	0.0%	7.1%
Mean	2.9	N/A	N/A	2.9
Median	3	N/A	N/A	3
Count	211	0	0	211

2. How many class sessions did you attend?

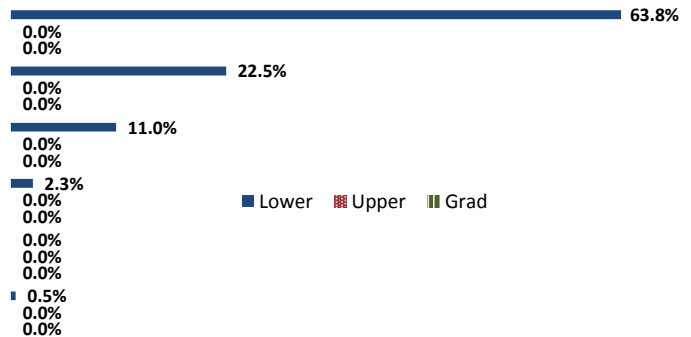
	Response by Course Level			
	Lower	Upper	Grad	Total
All (1)	44.1%	0.0%	0.0%	44.1%
Almost All (2)	53.5%	0.0%	0.0%	53.5%
More than Half (3)	2.3%	0.0%	0.0%	2.3%
Less than Half (4)	0.0%	0.0%	0.0%	0.0%
Mean	1.6	N/A	N/A	1.6
Median	2	N/A	N/A	2
Count	213	0	0	213

3. Why did you take this course? Choose all that apply.

	Response by Course Level			
	Lower	Upper	Grad	Total
3a. The course fulfills a general education requirement.	51.5%	0.0%	0.0%	51.5%
3b. The course fulfills a requirement in my major.	11.0%	0.0%	0.0%	11.0%
3c. I have enjoyed the professor's class(es) in the past.	1.8%	0.0%	0.0%	1.8%
3d. The course will improve job/career opportunities.	8.4%	0.0%	0.0%	8.4%
3e. The course sounded interesting to me.	22.9%	0.0%	0.0%	22.9%

4. How would you rate the overall quality of instruction in this course?

	Response by Course Level			
	Lower	Upper	Grad	Total
Excellent (6)	63.8%	0.0%	0.0%	63.8%
Very Good (5)	22.5%	0.0%	0.0%	22.5%
Good (4)	11.0%	0.0%	0.0%	11.0%
Fair (3)	2.3%	0.0%	0.0%	2.3%
Poor (2)	0.0%	0.0%	0.0%	0.0%
Unsatisfactory (1)	0.5%	0.0%	0.0%	0.5%
Mean	5.5	N/A	N/A	5.5
Median	6	N/A	N/A	6
Count	218	0	0	218



5. How would you rate your professor's specific contribution to you learning in this course?

	Response by Course Level			
	Lower	Upper	Grad	Total
Excellent (6)	70.8%	0.0%	0.0%	70.8%
Very Good (5)	16.9%	0.0%	0.0%	16.9%
Good (4)	9.6%	0.0%	0.0%	9.6%
Fair (3)	1.8%	0.0%	0.0%	1.8%
Poor (2)	0.5%	0.0%	0.0%	0.5%
Unsatisfactory (1)	0.5%	0.0%	0.0%	0.5%
Mean	5.5	N/A	N/A	5.5
Median	6	N/A	N/A	6
Count	219	0	0	219

