

California State University, San Bernardino

CSUSB ScholarWorks

Faculty Senate records

Arthur E. Nelson University Archives

12-13-2018

Student Opinion of Teaching Effectiveness (SOTE) - College of Arts & Letters Winter 2018 Term Summary

CSUSB Faculty Senate

Follow this and additional works at: <https://scholarworks.lib.csusb.edu/facultysenate>

Recommended Citation

CSUSB Faculty Senate, "Student Opinion of Teaching Effectiveness (SOTE) - College of Arts & Letters Winter 2018 Term Summary" (2018). *Faculty Senate records*. 224.
<https://scholarworks.lib.csusb.edu/facultysenate/224>

This Report is brought to you for free and open access by the Arthur E. Nelson University Archives at CSUSB ScholarWorks. It has been accepted for inclusion in Faculty Senate records by an authorized administrator of CSUSB ScholarWorks. For more information, please contact scholarworks@csusb.edu.

Student Opinion of Teaching Effectiveness (SOTE)- College of Arts & Letters Winter 2018 Term Summary

1. Rate your interest in the subject matter of this course before you took the class.

	Response by Course Level			
	Lower	Upper	Grad	Total
Very High (1)	24.4%	38.5%	53.3%	30.8%
High (2)	25.5%	25.6%	15.2%	25.4%
Moderately High (3)	20.9%	18.3%	10.5%	19.7%
Moderately Low (4)	11.0%	7.5%	11.4%	9.6%
Low (5)	11.4%	7.1%	5.7%	9.5%
Very Low (6)	6.7%	3.0%	3.8%	5.1%
Mean	2.8	2.3	2.1	2.6
Median	3	2	1	2
Count	3622	2678	105	6405

2. How many class sessions did you attend?

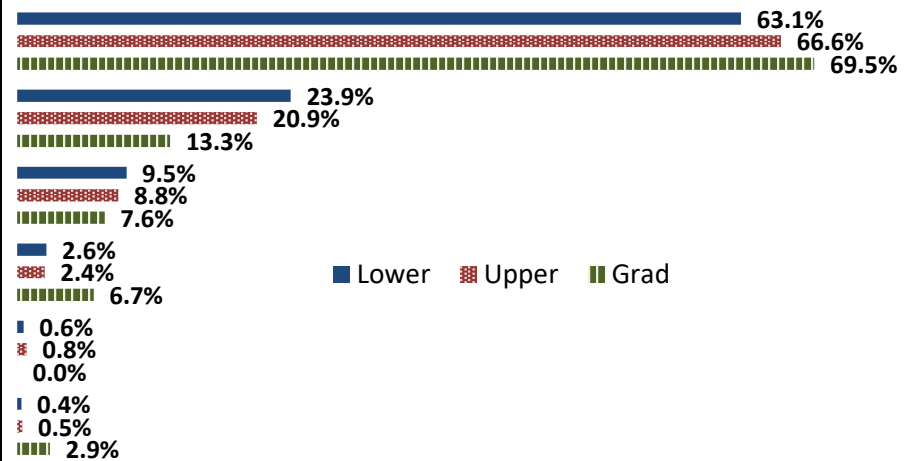
	Response by Course Level			
	Lower	Upper	Grad	Total
All (1)	44.9%	44.3%	49.0%	44.7%
Almost All (2)	50.9%	52.2%	51.0%	51.4%
More than Half (3)	3.7%	3.0%	0.0%	3.4%
Less than Half (4)	0.5%	0.5%	0.0%	0.5%
Mean	1.6	1.6	1.5	1.6
Median	2	2	2	2
Count	3623	2677	102	6402

3. Why did you take this course? Choose all that apply.

	Response by Course Level			
	Lower	Upper	Grad	Total
3a. The course fulfills a general education requirement.	73.5%	40.7%	36.7%	59.3%
3b. The course fulfills a requirement in my major.	21.2%	63.0%	75.2%	39.4%
3c. I have enjoyed the professor's class(es) in the past.	4.5%	12.8%	21.1%	8.2%
3d. The course will improve job/career opportunities.	12.9%	21.7%	25.7%	16.7%
3e. The course sounded interesting to me.	23.0%	31.9%	35.8%	26.9%

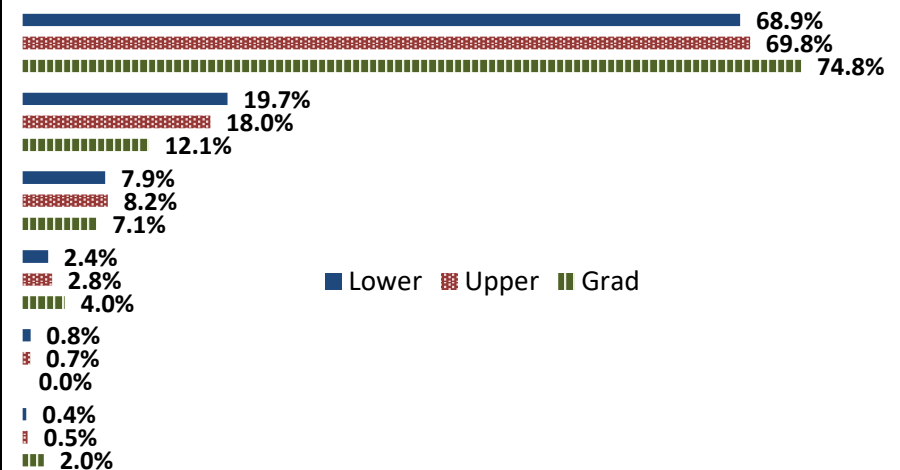
4. How would you rate the overall quality of instruction in this course?

	Response by Course Level			
	Lower	Upper	Grad	Total
Excellent (6)	63.1%	66.6%	69.5%	64.7%
Very Good (5)	23.9%	20.9%	13.3%	22.5%
Good (4)	9.5%	8.8%	7.6%	9.2%
Fair (3)	2.6%	2.4%	6.7%	2.6%
Poor (2)	0.6%	0.8%	0.0%	0.7%
Unsatisfactory (1)	0.4%	0.5%	2.9%	0.4%
Mean	5.5	5.5	5.4	5.5
Median	6	6	6	6
Count	3642	2665	105	6412



5. How would you rate your professor's specific contribution to your learning in this course?

	Response by Course Level			
	Lower	Upper	Grad	Total
Excellent (6)	68.9%	69.8%	74.8%	69.4%
Very Good (5)	19.7%	18.0%	12.1%	18.9%
Good (4)	7.9%	8.2%	7.1%	8.0%
Fair (3)	2.4%	2.8%	4.0%	2.6%
Poor (2)	0.8%	0.7%	0.0%	0.7%
Unsatisfactory (1)	0.4%	0.5%	2.0%	0.4%
Mean	5.5	5.5	5.5	5.5
Median	6	6	6	6
Count	3623	2673	99	6395



Student Opinion of Teaching Effectiveness (SOTE)- College of Business and Public Administration Winter 2018 Term Summary

1. Rate your interest in the subject matter of this course before you took the class.

	Response by Course Level			
	Lower	Upper	Grad	Total
Very High (1)	24.5%	31.8%	29.7%	30.2%
High (2)	25.2%	30.0%	33.2%	29.2%
Moderately High (3)	21.4%	18.0%	21.0%	18.9%
Moderately Low (4)	12.3%	9.2%	6.7%	9.7%
Low (5)	12.0%	7.4%	6.4%	8.3%
Very Low (6)	4.7%	3.6%	2.9%	3.8%
Mean	2.8	2.4	2.4	2.5
Median	3	2	2	2
Count	978	3388	343	4709

2. How many class sessions did you attend?

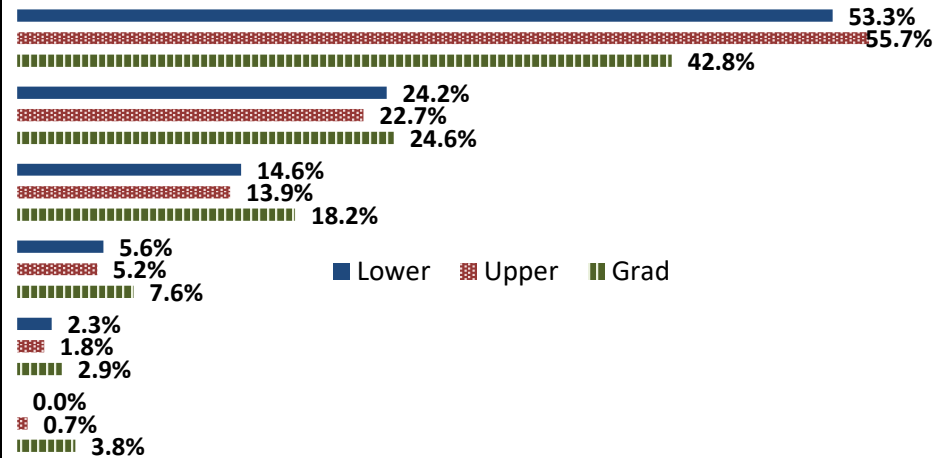
	Response by Course Level			
	Lower	Upper	Grad	Total
All (1)	58.5%	57.1%	60.7%	57.7%
Almost All (2)	37.6%	40.0%	37.8%	39.4%
More than Half (3)	3.6%	2.5%	0.6%	2.6%
Less than Half (4)	0.3%	0.4%	0.9%	0.4%
Mean	1.5	1.5	1.4	1.5
Median	1	1	1	1
Count	997	3404	328	4729

3. Why did you take this course? Choose all that apply.

	Response by Course Level			
	Lower	Upper	Grad	Total
3a. The course fulfills a general education requirement.	38.6%	27.8%	39.1%	30.9%
3b. The course fulfills a requirement in my major.	60.6%	78.0%	71.1%	73.8%
3c. I have enjoyed the professor's class(es) in the past.	4.4%	7.1%	5.7%	6.4%
3d. The course will improve job/career opportunities.	20.5%	24.4%	26.3%	23.7%
3e. The course sounded interesting to me.	18.0%	16.6%	13.4%	16.7%

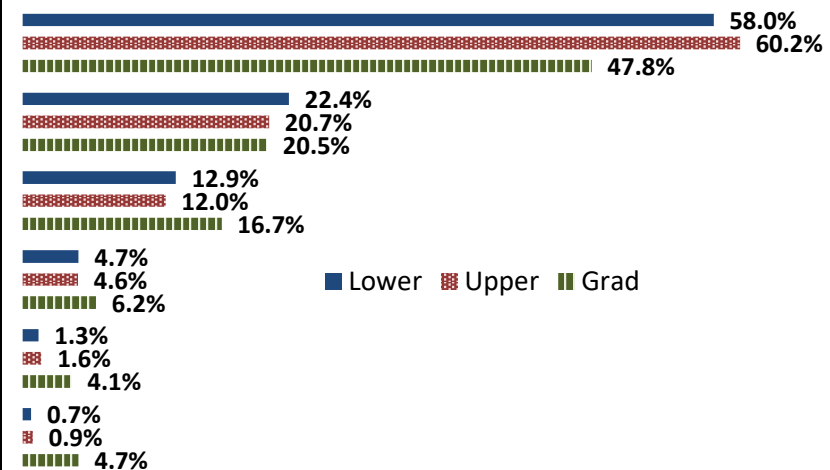
4. How would you rate the overall quality of instruction in this course?

	Response by Course Level			
	Lower	Upper	Grad	Total
Excellent (6)	53.3%	55.7%	42.8%	54.3%
Very Good (5)	24.2%	22.7%	24.6%	23.1%
Good (4)	14.6%	13.9%	18.2%	14.4%
Fair (3)	5.6%	5.2%	7.6%	5.5%
Poor (2)	2.3%	1.8%	2.9%	2.0%
Unsatisfactory (1)	0.0%	0.7%	3.8%	0.8%
Mean	5.2	5.2	4.9	5.2
Median	6	6	5	6
Count	977	3345	341	4663



5. How would you rate your professor's specific contribution to your learning in this course?

	Response by Course Level			
	Lower	Upper	Grad	Total
Excellent (6)	58.0%	60.2%	47.8%	58.9%
Very Good (5)	22.4%	20.7%	20.5%	21.0%
Good (4)	12.9%	12.0%	16.7%	12.5%
Fair (3)	4.7%	4.6%	6.2%	4.8%
Poor (2)	1.3%	1.6%	4.1%	1.7%
Unsatisfactory (1)	0.7%	0.9%	4.7%	1.1%
Mean	5.3	5.3	4.9	5.3
Median	6	6	5	6
Count	979	3372	341	4692



Student Opinion of Teaching Effectiveness (SOTE)- College of Education Winter 2018 Term Summary

1. Rate your interest in the subject matter of this course before you took the class.

	Response by Course Level			
	Lower	Upper	Grad	Total
Very High (1)	48.6%	38.1%	47.0%	43.5%
High (2)	25.7%	30.4%	23.8%	26.6%
Moderately High (3)	15.7%	15.9%	18.2%	17.1%
Moderately Low (4)	4.3%	5.7%	4.8%	5.1%
Low (5)	5.7%	6.3%	3.7%	4.9%
Very Low (6)	0.0%	3.6%	2.6%	2.8%
Mean	1.9	2.2	2.0	2.1
Median	2	2	2	2
Count	70	473	626	1169

2. How many class sessions did you attend?

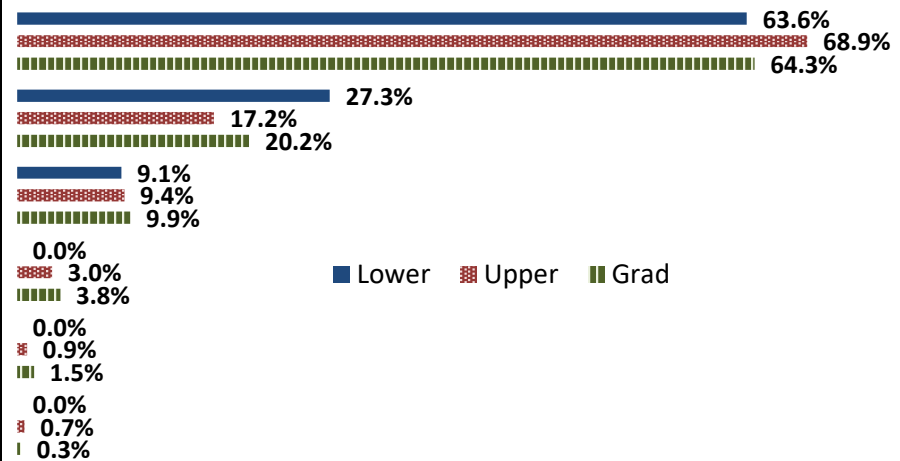
	Response by Course Level			
	Lower	Upper	Grad	Total
All (1)	87.3%	74.4%	73.7%	74.8%
Almost All (2)	11.3%	25.2%	25.0%	24.2%
More than Half (3)	1.4%	0.2%	1.1%	0.8%
Less than Half (4)	0.0%	0.2%	0.2%	0.2%
Mean	1.1	1.3	1.3	1.3
Median	1	1	1	1
Count	71	469	624	1164

3. Why did you take this course? Choose all that apply.

	Response by Course Level			
	Lower	Upper	Grad	Total
3a. The course fulfills a general education requirement.	32.9%	28.2%	29.3%	29.1%
3b. The course fulfills a requirement in my major.	64.4%	69.4%	80.5%	75.1%
3c. I have enjoyed the professor's class(es) in the past.	6.9%	13.0%	18.7%	15.7%
3d. The course will improve job/career opportunities.	27.4%	25.6%	30.4%	28.3%
3e. The course sounded interesting to me.	37.0%	10.8%	14.6%	14.4%

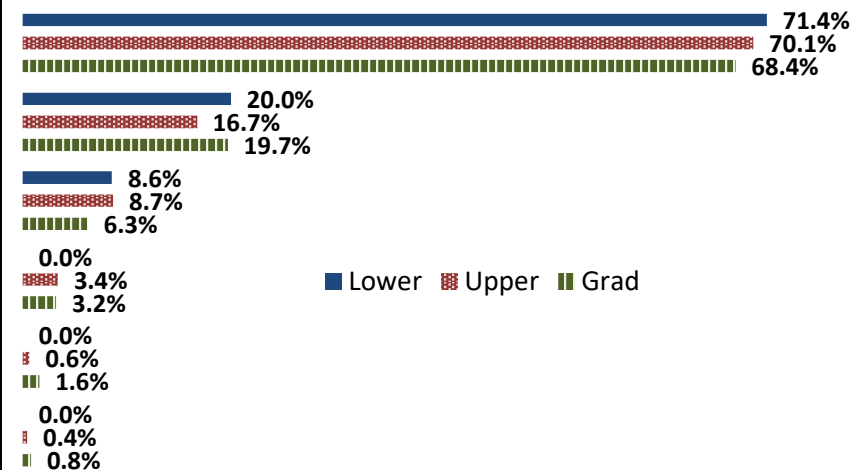
4. How would you rate the overall quality of instruction in this course?

	Response by Course Level			
	Lower	Upper	Grad	Total
Excellent (6)	63.6%	68.9%	64.3%	66.1%
Very Good (5)	27.3%	17.2%	20.2%	19.4%
Good (4)	9.1%	9.4%	9.9%	9.6%
Fair (3)	0.0%	3.0%	3.8%	3.3%
Poor (2)	0.0%	0.9%	1.5%	1.2%
Unsatisfactory (1)	0.0%	0.7%	0.3%	0.4%
Mean	5.5	5.5	5.4	5.4
Median	6	6	6	6
Count	66	460	608	1134



5. How would you rate your professor's specific contribution to your learning in this course?

	Response by Course Level			
	Lower	Upper	Grad	Total
Excellent (6)	71.4%	70.1%	68.4%	69.3%
Very Good (5)	20.0%	16.7%	19.7%	18.5%
Good (4)	8.6%	8.7%	6.3%	7.4%
Fair (3)	0.0%	3.4%	3.2%	3.1%
Poor (2)	0.0%	0.6%	1.6%	1.1%
Unsatisfactory (1)	0.0%	0.4%	0.8%	0.6%
Mean	5.6	5.5	5.5	5.5
Median	6	6	6	6
Count	70	472	624	1166



Student Opinion of Teaching Effectiveness (SOTE)- College of Natural Sciences Winter 2018 Term Summary

1. Rate your interest in the subject matter of this course before you took the class.

	Response by Course Level			
	Lower	Upper	Grad	Total
Very High (1)	22.7%	36.4%	39.1%	28.0%
High (2)	24.8%	27.4%	27.5%	25.8%
Moderately High (3)	20.5%	18.7%	18.1%	19.8%
Moderately Low (4)	11.7%	7.2%	7.3%	10.0%
Low (5)	12.9%	6.9%	4.4%	10.6%
Very Low (6)	7.4%	3.4%	3.6%	5.9%
Mean	2.9	2.3	2.2	2.7
Median	3	2	2	2
Count	7033	4208	138	11379

2. How many class sessions did you attend?

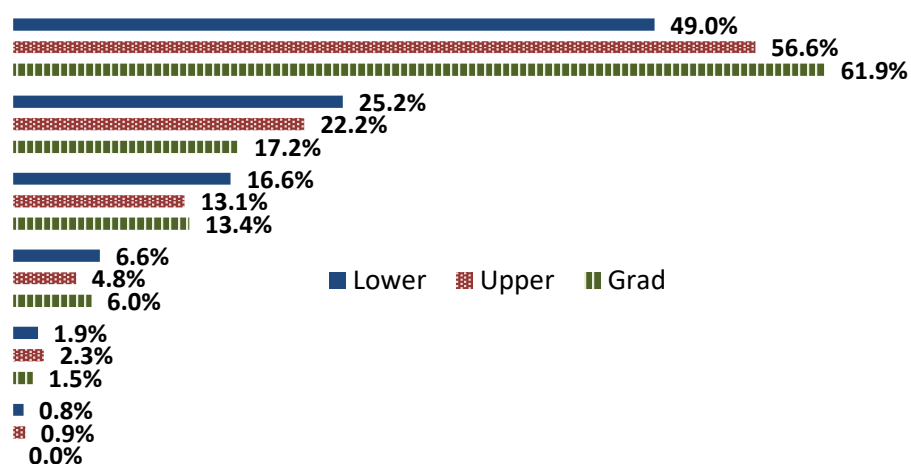
	Response by Course Level			
	Lower	Upper	Grad	Total
All (1)	67.6%	64.7%	72.2%	66.6%
Almost All (2)	29.5%	32.9%	27.1%	30.7%
More than Half (3)	2.4%	1.9%	0.8%	2.2%
Less than Half (4)	0.6%	0.4%	0.0%	0.5%
Mean	1.4	1.4	1.3	1.4
Median	1	1	1	1
Count	7039	4186	133	11358

3. Why did you take this course? Choose all that apply.

	Response by Course Level			
	Lower	Upper	Grad	Total
3a. The course fulfills a general education requirement.	52.5%	25.7%	25.5%	42.4%
3b. The course fulfills a requirement in my major.	53.1%	76.6%	70.5%	62.0%
3c. I have enjoyed the professor's class(es) in the past.	2.6%	11.0%	12.8%	5.8%
3d. The course will improve job/career opportunities.	11.0%	20.3%	26.9%	14.6%
3e. The course sounded interesting to me.	11.0%	18.6%	14.1%	13.8%

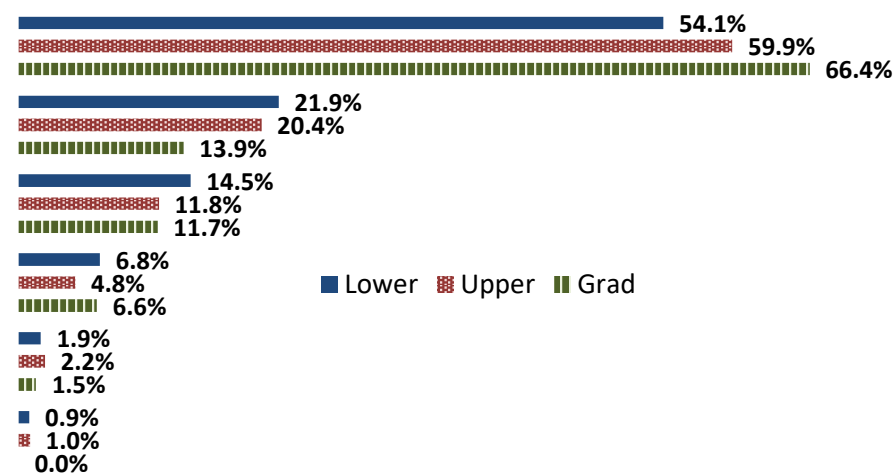
4. How would you rate the overall quality of instruction in this course?

	Response by Course Level			
	Lower	Upper	Grad	Total
Excellent (6)	49.0%	56.6%	61.9%	51.9%
Very Good (5)	25.2%	22.2%	17.2%	24.0%
Good (4)	16.6%	13.1%	13.4%	15.3%
Fair (3)	6.6%	4.8%	6.0%	5.9%
Poor (2)	1.9%	2.3%	1.5%	2.1%
Unsatisfactory (1)	0.8%	0.9%	0.0%	0.8%
Mean	5.1	5.2	5.3	5.2
Median	5	6	6	6
Count	7013	4185	134	11332



5. How would you rate your professor's specific contribution to your learning in this course?

	Response by Course Level			
	Lower	Upper	Grad	Total
Excellent (6)	54.1%	59.9%	66.4%	56.4%
Very Good (5)	21.9%	20.4%	13.9%	21.2%
Good (4)	14.5%	11.8%	11.7%	13.4%
Fair (3)	6.8%	4.8%	6.6%	6.1%
Poor (2)	1.9%	2.2%	1.5%	2.0%
Unsatisfactory (1)	0.9%	1.0%	0.0%	0.9%
Mean	5.2	5.3	5.4	5.2
Median	5	6	6	6
Count	7065	4228	137	11430



Student Opinion of Teaching Effectiveness (SOTE)- College of Social and Behavioral Sciences Winter 2018 Term Summary

1. Rate your interest in the subject matter of this course before you took the class.

	Response by Course Level			
	Lower	Upper	Grad	Total
Very High (1)	21.6%	32.7%	50.0%	29.4%
High (2)	24.4%	28.4%	27.3%	26.9%
Moderately High (3)	21.4%	18.6%	10.7%	19.2%
Moderately Low (4)	12.0%	8.4%	6.0%	9.6%
Low (5)	14.7%	8.3%	3.4%	10.4%
Very Low (6)	5.9%	3.8%	2.6%	4.5%
Mean	2.9	2.4	1.9	2.6
Median	3	2	2	2
Count	3346	5591	384	9321

2. How many class sessions did you attend?

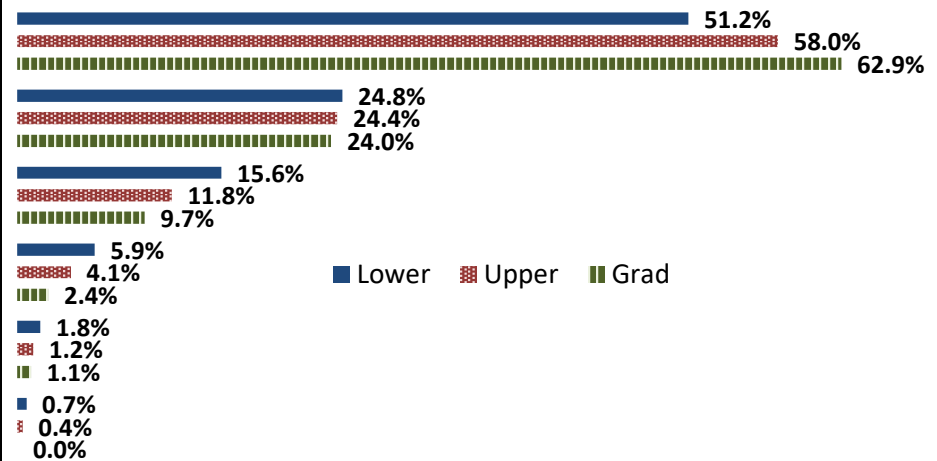
	Response by Course Level			
	Lower	Upper	Grad	Total
All (1)	50.0%	52.5%	61.5%	52.0%
Almost All (2)	45.3%	43.9%	38.0%	44.2%
More than Half (3)	3.8%	3.2%	0.5%	3.3%
Less than Half (4)	0.9%	0.4%	0.0%	0.6%
Mean	1.6	1.5	1.4	1.5
Median	1	1	1	1
Count	3354	5593	382	9329

3. Why did you take this course? Choose all that apply.

	Response by Course Level			
	Lower	Upper	Grad	Total
3a. The course fulfills a general education requirement.	71.5%	34.7%	33.9%	48.0%
3b. The course fulfills a requirement in my major.	28.3%	70.6%	80.2%	55.6%
3c. I have enjoyed the professor's class(es) in the past.	2.4%	12.2%	20.1%	8.9%
3d. The course will improve job/career opportunities.	8.9%	19.5%	35.7%	16.3%
3e. The course sounded interesting to me.	18.8%	31.7%	28.4%	26.9%

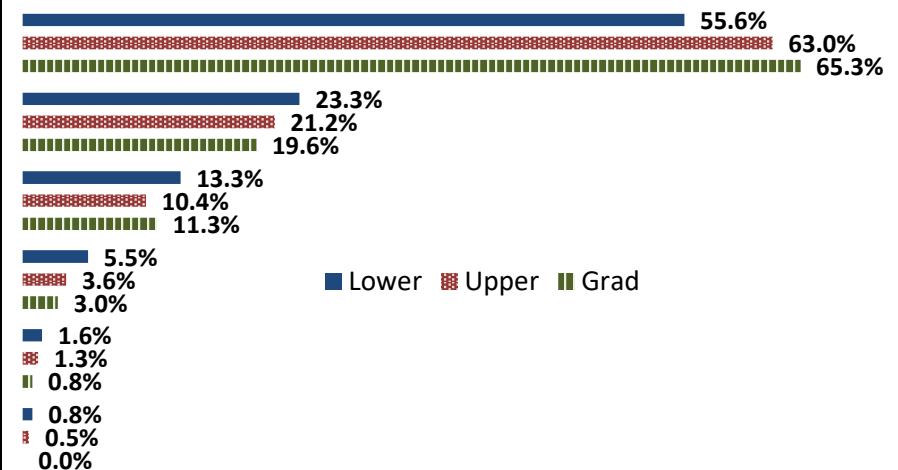
4. How would you rate the overall quality of instruction in this course?

	Response by Course Level			
	Lower	Upper	Grad	Total
Excellent (6)	51.2%	58.0%	62.9%	55.8%
Very Good (5)	24.8%	24.4%	24.0%	24.5%
Good (4)	15.6%	11.8%	9.7%	13.1%
Fair (3)	5.9%	4.1%	2.4%	4.7%
Poor (2)	1.8%	1.2%	1.1%	1.4%
Unsatisfactory (1)	0.7%	0.4%	0.0%	0.5%
Mean	5.2	5.3	5.5	5.3
Median	6	6	6	6
Count	3224	5472	380	9076



5. How would you rate your professor's specific contribution to your learning in this course?

	Response by Course Level			
	Lower	Upper	Grad	Total
Excellent (6)	55.6%	63.0%	65.3%	60.4%
Very Good (5)	23.3%	21.2%	19.6%	21.9%
Good (4)	13.3%	10.4%	11.3%	11.4%
Fair (3)	5.5%	3.6%	3.0%	4.3%
Poor (2)	1.6%	1.3%	0.8%	1.4%
Unsatisfactory (1)	0.8%	0.5%	0.0%	0.6%
Mean	5.2	5.4	5.5	5.3
Median	6	6	6	6
Count	3319	5607	372	9298



Student Opinion of Teaching Effectiveness (SOTE)- College of University Studies Winter 2018 Term Summary

1. Rate your interest in the subject matter of this course before you took the class.

	Response by Course Level			
	Lower	Upper	Grad	Total
Very High (1)	0.0%	0.0%	0.0%	0.0%
High (2)	0.0%	0.0%	0.0%	0.0%
Moderately High (3)	0.0%	0.0%	0.0%	0.0%
Moderately Low (4)	0.0%	0.0%	0.0%	0.0%
Low (5)	0.0%	0.0%	0.0%	0.0%
Very Low (6)	0.0%	0.0%	0.0%	0.0%
Mean
Median
Count	0	0	0	0

2. How many class sessions did you attend?

	Response by Course Level			
	Lower	Upper	Grad	Total
All (1)	0.0%	0.0%	0.0%	0.0%
Almost All (2)	0.0%	0.0%	0.0%	0.0%
More than Half (3)	0.0%	0.0%	0.0%	0.0%
Less than Half (4)	0.0%	0.0%	0.0%	0.0%
Mean
Median
Count	0	0	0	0

3. Why did you take this course? Choose all that apply.

	Response by Course Level			
	Lower	Upper	Grad	Total
3a. The course fulfills a general education requirement.	0.0%	0.0%	0.0%	0.0%
3b. The course fulfills a requirement in my major.	0.0%	0.0%	0.0%	0.0%
3c. I have enjoyed the professor's class(es) in the past.	0.0%	0.0%	0.0%	0.0%
3d. The course will improve job/career opportunities.	0.0%	0.0%	0.0%	0.0%
3e. The course sounded interesting to me.	0.0%	0.0%	0.0%	0.0%

4. How would you rate the overall quality of instruction in this course?

	Response by Course Level			
	Lower	Upper	Grad	Total
Excellent (6)	0.0%	0.0%	0.0%	0.0%
Very Good (5)	0.0%	0.0%	0.0%	0.0%
Good (4)	0.0%	0.0%	0.0%	0.0%
Fair (3)	0.0%	0.0%	0.0%	0.0%
Poor (2)	0.0%	0.0%	0.0%	0.0%
Unsatisfactory (1)	0.0%	0.0%	0.0%	0.0%
Mean
Median
Count	0	0	0	0

0.0%
0.0%
0.0%
0.0%
0.0%
0.0%
0.0%
0.0%
0.0%
0.0%
0.0%
0.0%
0.0%
0.0%
0.0%
0.0%

■ Lower ■ Upper ■ Grad

5. How would you rate your professor's specific contribution to you learning in this course?

	Response by Course Level			
	Lower	Upper	Grad	Total
Excellent (6)	0.0%	0.0%	0.0%	0.0%
Very Good (5)	0.0%	0.0%	0.0%	0.0%
Good (4)	0.0%	0.0%	0.0%	0.0%
Fair (3)	0.0%	0.0%	0.0%	0.0%
Poor (2)	0.0%	0.0%	0.0%	0.0%
Unsatisfactory (1)	0.0%	0.0%	0.0%	0.0%
Mean
Median
Count	0	0	0	0

0.0%
0.0%
0.0%
0.0%
0.0%
0.0%
0.0%
0.0%
0.0%
0.0%
0.0%
0.0%
0.0%
0.0%
0.0%

■ Lower ■ Upper ■ Grad