

California State University, San Bernardino

**CSUSB ScholarWorks**

---

Faculty Senate records

Arthur E. Nelson University Archives

---

7-3-2019

## **Student Opinion of Teaching Effectiveness (SOTE) - College of Arts & Letters Spring 2019 Term Summary**

CSUSB Faculty Senate

Follow this and additional works at: <https://scholarworks.lib.csusb.edu/facultysenate>

---

### **Recommended Citation**

CSUSB Faculty Senate, "Student Opinion of Teaching Effectiveness (SOTE) - College of Arts & Letters Spring 2019 Term Summary" (2019). *Faculty Senate records*. 218.  
<https://scholarworks.lib.csusb.edu/facultysenate/218>

This Report is brought to you for free and open access by the Arthur E. Nelson University Archives at CSUSB ScholarWorks. It has been accepted for inclusion in Faculty Senate records by an authorized administrator of CSUSB ScholarWorks. For more information, please contact [scholarworks@csusb.edu](mailto:scholarworks@csusb.edu).

## Student Opinion of Teaching Effectiveness (SOTE)- College of Arts & Letters Spring 2019 Term Summary

### 1. Rate your interest in the subject matter of this course before you took the class.

	Response by Course Level			
	Lower	Upper	Grad	Total
Very High (1)	25.5%	38.8%	53.0%	31.8%
High (2)	26.2%	25.7%	19.3%	25.9%
Moderately High (3)	20.4%	17.8%	20.5%	19.2%
Moderately Low (4)	11.1%	8.6%	3.6%	9.9%
Low (5)	11.9%	6.2%	3.6%	9.2%
Very Low (6)	5.0%	2.9%	0.0%	4.0%
Mean	2.7	2.3	1.9	2.5
Median	2	2	1	2
Count	3093	2517	83	5693

### 2. How many class sessions did you attend?

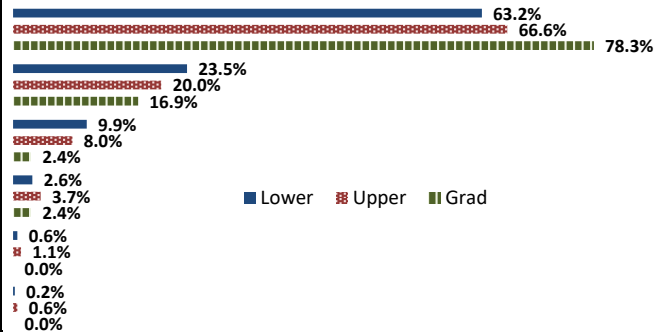
	Response by Course Level			
	Lower	Upper	Grad	Total
All (1)	41.9%	42.0%	37.8%	41.9%
Almost All (2)	52.8%	53.7%	56.1%	53.2%
More than Half (3)	4.4%	3.9%	6.1%	4.2%
Less than Half (4)	0.9%	0.4%	0.0%	0.7%
Mean	1.6	1.6	1.7	1.6
Median	2	2	2	2
Count	3117	2488	82	5687

### 3. Why did you take this course? Choose all that apply.

	Response by Course Level			
	Lower	Upper	Grad	Total
3a. The course fulfills a general education requirement.	71.5%	36.5%	16.3%	55.4%
3b. The course fulfills a requirement in my major.	22.2%	64.7%	75.6%	41.6%
3c. I have enjoyed the professor's class(es) in the past.	6.4%	13.1%	31.4%	9.7%
3d. The course will improve job/career opportunities.	12.2%	19.8%	25.6%	15.7%
3e. The course sounded interesting to me.	24.3%	30.6%	58.1%	27.5%

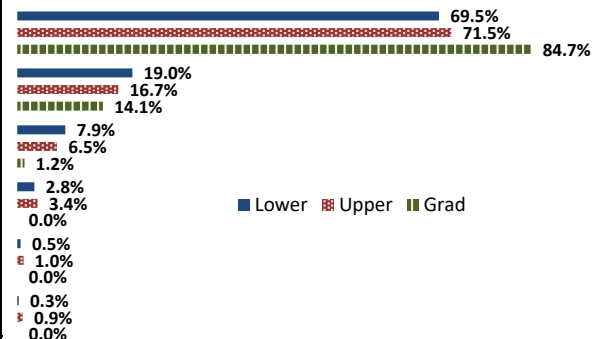
### 4. How would you rate the overall quality of instruction in this course?

	Response by Course Level			
	Lower	Upper	Grad	Total
Excellent (6)	63.2%	66.6%	78.3%	64.9%
Very Good (5)	23.5%	20.0%	16.9%	21.8%
Good (4)	9.9%	8.0%	2.4%	9.0%
Fair (3)	2.6%	3.7%	2.4%	3.1%
Poor (2)	0.6%	1.1%	0.0%	0.8%
Unsatisfactory (1)	0.2%	0.6%	0.0%	0.4%
Mean	5.5	5.5	5.7	5.5
Median	6	6	6	6
Count	3136	2533	83	5752



### 5. How would you rate your professor's specific contribution to you learning in this course?

	Response by Course Level			
	Lower	Upper	Grad	Total
Excellent (6)	69.5%	71.5%	84.7%	70.6%
Very Good (5)	19.0%	16.7%	14.1%	17.9%
Good (4)	7.9%	6.5%	1.2%	7.2%
Fair (3)	2.8%	3.4%	0.0%	3.0%
Poor (2)	0.5%	1.0%	0.0%	0.8%
Unsatisfactory (1)	0.3%	0.9%	0.0%	0.5%
Mean	5.5	5.5	5.8	5.5
Median	6	6	6	6
Count	3127	2523	85	5735



# Student Opinion of Teaching Effectiveness (SOTE)- College of Business and Public Administration Spring 2019 Term Summary

## 1. Rate your interest in the subject matter of this course before you took the class.

	Response by Course Level			
	Lower	Upper	Grad	Total
Very High (1)	23.6%	35.5%	37.1%	33.0%
High (2)	28.3%	27.6%	29.0%	27.9%
Moderately High (3)	21.3%	18.0%	18.4%	18.8%
Moderately Low (4)	10.1%	7.6%	7.5%	8.1%
Low (5)	10.7%	8.0%	5.8%	8.4%
Very Low (6)	6.1%	3.5%	2.3%	3.9%
Mean	2.7	2.4	2.2	2.4
Median	2	2	2	2
Count	873	2804	348	4025

## 2. How many class sessions did you attend?

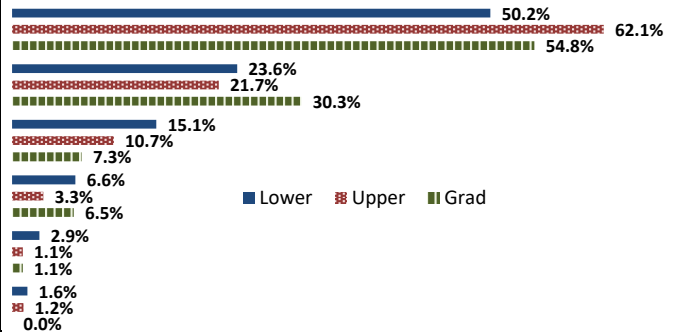
	Response by Course Level			
	Lower	Upper	Grad	Total
All (1)	58.0%	55.4%	60.0%	56.3%
Almost All (2)	37.4%	41.7%	36.3%	40.3%
More than Half (3)	3.5%	2.4%	3.1%	2.7%
Less than Half (4)	1.1%	0.6%	0.6%	0.7%
Mean	1.5	1.5	1.4	1.5
Median	1	1	1	1
Count	852	2806	350	4008

## 3. Why did you take this course? Choose all that apply.

	Response by Course Level			
	Lower	Upper	Grad	Total
3a. The course fulfills a general education requirement.	42.8%	28.6%	37.3%	32.4%
3b. The course fulfills a requirement in my major.	54.5%	73.1%	67.9%	68.7%
3c. I have enjoyed the professor's class(es) in the past.	1.5%	8.1%	12.7%	7.1%
3d. The course will improve job/career opportunities.	16.9%	26.7%	36.0%	25.5%
3e. The course sounded interesting to me.	17.8%	16.8%	23.3%	17.6%

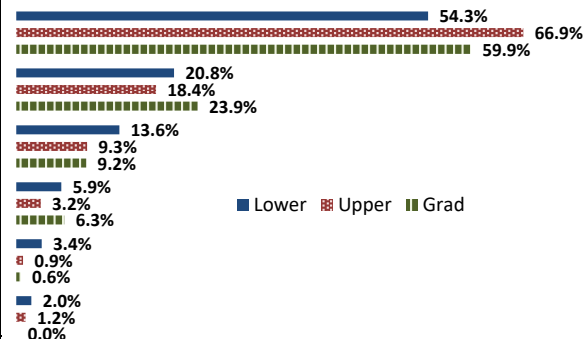
## 4. How would you rate the overall quality of instruction in this course?

	Response by Course Level			
	Lower	Upper	Grad	Total
Excellent (6)	50.2%	62.1%	54.8%	58.9%
Very Good (5)	23.6%	21.7%	30.3%	22.9%
Good (4)	15.1%	10.7%	7.3%	11.3%
Fair (3)	6.6%	3.3%	6.5%	4.3%
Poor (2)	2.9%	1.1%	1.1%	1.5%
Unsatisfactory (1)	1.6%	1.2%	0.0%	1.2%
Mean	5.1	5.4	5.3	5.3
Median	6	6	6	6
Count	873	2841	356	4070



## 5. How would you rate your professor's specific contribution to you learning in this course?

	Response by Course Level			
	Lower	Upper	Grad	Total
Excellent (6)	54.3%	66.9%	59.9%	63.6%
Very Good (5)	20.8%	18.4%	23.9%	19.4%
Good (4)	13.6%	9.3%	9.2%	10.2%
Fair (3)	5.9%	3.2%	6.3%	4.1%
Poor (2)	3.4%	0.9%	0.6%	1.4%
Unsatisfactory (1)	2.0%	1.2%	0.0%	1.3%
Mean	5.1	5.4	5.4	5.4
Median	6	6	6	6
Count	860	2837	347	4044



## Student Opinion of Teaching Effectiveness (SOTE)- College of Education Spring 2019 Term Summary

### 1. Rate your interest in the subject matter of this course before you took the class.

	Response by Course Level			
	Lower	Upper	Grad	Total
Very High (1)	38.8%	40.5%	52.3%	47.1%
High (2)	33.8%	29.6%	25.3%	27.5%
Moderately High (3)	15.0%	14.6%	13.9%	14.3%
Moderately Low (4)	5.0%	6.0%	4.8%	5.2%
Low (5)	6.3%	6.6%	2.8%	4.4%
Very Low (6)	1.3%	2.7%	1.0%	1.6%
Mean	2.1	2.2	1.8	2.0
Median	2	2	1	2
Count	80	301	503	884

### 2. How many class sessions did you attend?

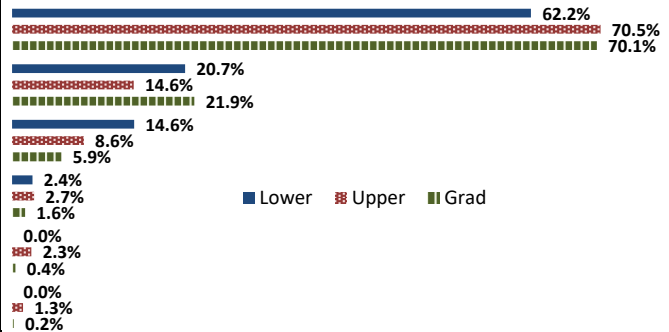
	Response by Course Level			
	Lower	Upper	Grad	Total
All (1)	55.6%	80.5%	76.6%	76.0%
Almost All (2)	44.4%	18.9%	22.7%	23.3%
More than Half (3)	0.0%	0.3%	0.6%	0.5%
Less than Half (4)	0.0%	0.3%	0.2%	0.2%
Mean	1.4	1.2	1.2	1.2
Median	1	1	1	1
Count	81	307	499	887

### 3. Why did you take this course? Choose all that apply.

	Response by Course Level			
	Lower	Upper	Grad	Total
3a. The course fulfills a general education requirement.	48.2%	35.0%	31.8%	34.4%
3b. The course fulfills a requirement in my major.	43.5%	66.6%	78.4%	71.1%
3c. I have enjoyed the professor's class(es) in the past.	0.0%	4.4%	23.0%	14.5%
3d. The course will improve job/career opportunities.	15.3%	30.0%	27.2%	27.1%
3e. The course sounded interesting to me.	35.3%	10.3%	13.8%	14.6%

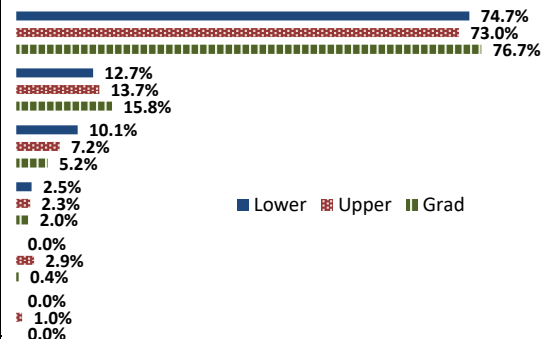
### 4. How would you rate the overall quality of instruction in this course?

	Response by Course Level			
	Lower	Upper	Grad	Total
Excellent (6)	62.2%	70.5%	70.1%	69.5%
Very Good (5)	20.7%	14.6%	21.9%	19.3%
Good (4)	14.6%	8.6%	5.9%	7.6%
Fair (3)	2.4%	2.7%	1.6%	2.0%
Poor (2)	0.0%	2.3%	0.4%	1.0%
Unsatisfactory (1)	0.0%	1.3%	0.2%	0.6%
Mean	5.4	5.4	5.6	5.5
Median	6	6	6	6
Count	82	302	508	892



### 5. How would you rate your professor's specific contribution to you learning in this course?

	Response by Course Level			
	Lower	Upper	Grad	Total
Excellent (6)	74.7%	73.0%	76.7%	75.2%
Very Good (5)	12.7%	13.7%	15.8%	14.8%
Good (4)	10.1%	7.2%	5.2%	6.3%
Fair (3)	2.5%	2.3%	2.0%	2.1%
Poor (2)	0.0%	2.9%	0.4%	1.2%
Unsatisfactory (1)	0.0%	1.0%	0.0%	0.3%
Mean	5.6	5.5	5.7	5.6
Median	6	6	6	6
Count	79	307	501	887



## Student Opinion of Teaching Effectiveness (SOTE)- College of Natural Sciences Spring 2019 Term Summary

### 1. Rate your interest in the subject matter of this course before you took the class.

	Response by Course Level			
	Lower	Upper	Grad	Total
Very High (1)	20.7%	37.1%	43.8%	27.5%
High (2)	23.7%	28.1%	25.0%	25.5%
Moderately High (3)	21.9%	17.7%	23.8%	20.2%
Moderately Low (4)	12.3%	7.0%	6.3%	10.1%
Low (5)	14.1%	6.6%	1.3%	11.0%
Very Low (6)	7.4%	3.5%	0.0%	5.7%
Mean	3.0	2.3	2.0	2.7
Median	3	2	2	2
Count	5997	4163	80	10240

### 2. How many class sessions did you attend?

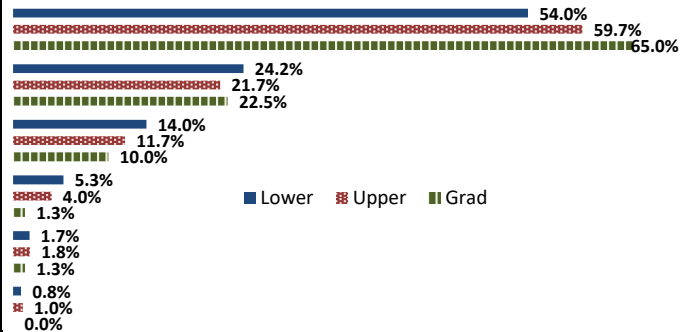
	Response by Course Level			
	Lower	Upper	Grad	Total
All (1)	66.1%	62.9%	63.0%	64.8%
Almost All (2)	30.9%	34.6%	34.6%	32.4%
More than Half (3)	2.4%	2.2%	1.2%	2.3%
Less than Half (4)	0.6%	0.3%	1.2%	0.5%
Mean	1.4	1.4	1.4	1.4
Median	1	1	1	1
Count	6018	4118	81	10217

### 3. Why did you take this course? Choose all that apply.

	Response by Course Level			
	Lower	Upper	Grad	Total
3a. The course fulfills a general education requirement.	56.7%	26.6%	26.8%	44.4%
3b. The course fulfills a requirement in my major.	49.0%	74.0%	84.2%	59.3%
3c. I have enjoyed the professor's class(es) in the past.	4.2%	12.0%	29.3%	7.5%
3d. The course will improve job/career opportunities.	9.4%	18.9%	25.6%	13.3%
3e. The course sounded interesting to me.	9.8%	17.4%	39.0%	13.1%

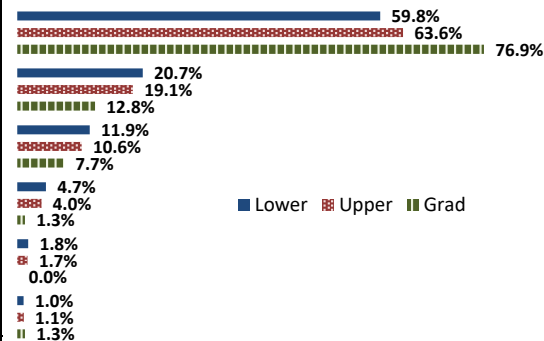
### 4. How would you rate the overall quality of instruction in this course?

	Response by Course Level			
	Lower	Upper	Grad	Total
Excellent (6)	54.0%	59.7%	65.0%	56.4%
Very Good (5)	24.2%	21.7%	22.5%	23.2%
Good (4)	14.0%	11.7%	10.0%	13.0%
Fair (3)	5.3%	4.0%	1.3%	4.8%
Poor (2)	1.7%	1.8%	1.3%	1.7%
Unsatisfactory (1)	0.8%	1.0%	0.0%	0.9%
Mean	5.2	5.3	5.5	5.3
Median	6	6	6	6
Count	6082	4185	80	10347



### 5. How would you rate your professor's specific contribution to you learning in this course?

	Response by Course Level			
	Lower	Upper	Grad	Total
Excellent (6)	59.8%	63.6%	76.9%	61.5%
Very Good (5)	20.7%	19.1%	12.8%	20.0%
Good (4)	11.9%	10.6%	7.7%	11.4%
Fair (3)	4.7%	4.0%	1.3%	4.4%
Poor (2)	1.8%	1.7%	0.0%	1.8%
Unsatisfactory (1)	1.0%	1.1%	1.3%	1.1%
Mean	5.3	5.4	5.6	5.3
Median	6	6	6	6
Count	6068	4181	78	10327



# Student Opinion of Teaching Effectiveness (SOTE)- College of Social and Behavioral Sciences Spring 2019 Term Summary

## 1. Rate your interest in the subject matter of this course before you took the class.

	Response by Course Level			
	Lower	Upper	Grad	Total
Very High (1)	20.8%	34.3%	56.8%	31.2%
High (2)	29.0%	28.4%	25.4%	28.5%
Moderately High (3)	22.1%	17.7%	10.1%	18.7%
Moderately Low (4)	10.2%	8.3%	4.0%	8.6%
Low (5)	13.0%	8.0%	2.0%	9.3%
Very Low (6)	4.9%	3.2%	1.8%	3.7%
Mean	2.8	2.4	1.7	2.5
Median	3	2	1	2
Count	2629	5080	456	8165

## 2. How many class sessions did you attend?

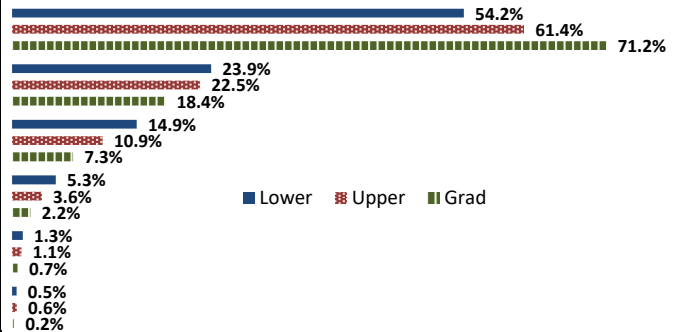
	Response by Course Level			
	Lower	Upper	Grad	Total
All (1)	49.8%	49.6%	68.4%	50.7%
Almost All (2)	46.0%	46.4%	30.9%	45.4%
More than Half (3)	3.6%	3.4%	0.7%	3.3%
Less than Half (4)	0.7%	0.6%	0.0%	0.6%
Mean	1.6	1.5	1.3	1.5
Median	2	2	1	1
Count	2606	5075	443	8124

## 3. Why did you take this course? Choose all that apply.

	Response by Course Level			
	Lower	Upper	Grad	Total
3a. The course fulfills a general education requirement.	67.3%	35.4%	36.6%	45.9%
3b. The course fulfills a requirement in my major.	33.6%	67.5%	68.3%	56.5%
3c. I have enjoyed the professor's class(es) in the past.	2.9%	11.9%	20.8%	9.5%
3d. The course will improve job/career opportunities.	8.9%	18.1%	30.0%	15.8%
3e. The course sounded interesting to me.	18.7%	31.4%	23.1%	26.8%

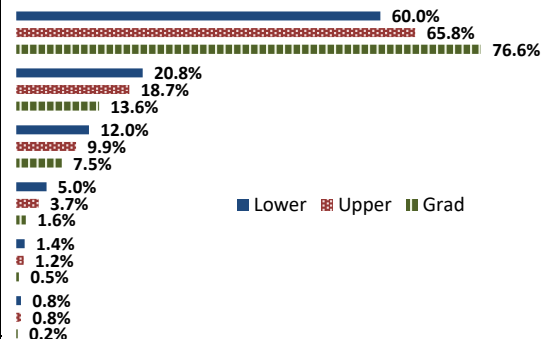
## 4. How would you rate the overall quality of instruction in this course?

	Response by Course Level			
	Lower	Upper	Grad	Total
Excellent (6)	54.2%	61.4%	71.2%	59.6%
Very Good (5)	23.9%	22.5%	18.4%	22.7%
Good (4)	14.9%	10.9%	7.3%	12.0%
Fair (3)	5.3%	3.6%	2.2%	4.0%
Poor (2)	1.3%	1.1%	0.7%	1.1%
Unsatisfactory (1)	0.5%	0.6%	0.2%	0.5%
Mean	5.2	5.4	5.6	5.3
Median	6	6	6	6
Count	2665	5098	452	8215



## 5. How would you rate your professor's specific contribution to you learning in this course?

	Response by Course Level			
	Lower	Upper	Grad	Total
Excellent (6)	60.0%	65.8%	76.6%	64.5%
Very Good (5)	20.8%	18.7%	13.6%	19.1%
Good (4)	12.0%	9.9%	7.5%	10.4%
Fair (3)	5.0%	3.7%	1.6%	4.0%
Poor (2)	1.4%	1.2%	0.5%	1.3%
Unsatisfactory (1)	0.8%	0.8%	0.2%	0.8%
Mean	5.3	5.4	5.6	5.4
Median	6	6	6	6
Count	2650	5083	440	8173



## Student Opinion of Teaching Effectiveness (SOTE)- College of University Studies Spring 2019 Term Summary

### 1. Rate your interest in the subject matter of this course before you took the class.

	Response by Course Level			
	Lower	Upper	Grad	Total
Very High (1)	42.9%	0.0%	0.0%	42.9%
High (2)	28.6%	0.0%	0.0%	28.6%
Moderately High (3)	14.3%	0.0%	0.0%	14.3%
Moderately Low (4)	0.0%	0.0%	0.0%	0.0%
Low (5)	0.0%	0.0%	0.0%	0.0%
Very Low (6)	14.3%	0.0%	0.0%	14.3%
Mean	2.3	.	.	2.3
Median	2	.	.	2
Count	7	0	0	7

### 2. How many class sessions did you attend?

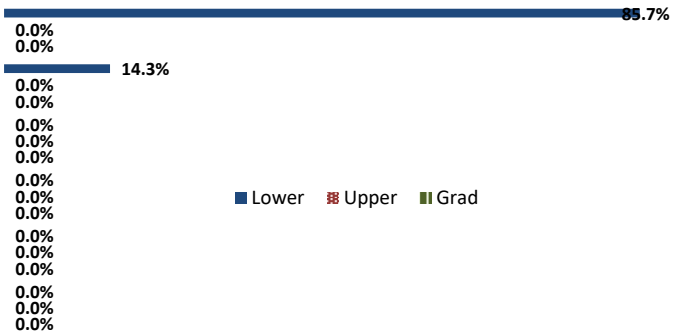
	Response by Course Level			
	Lower	Upper	Grad	Total
All (1)	28.6%	0.0%	0.0%	28.6%
Almost All (2)	57.1%	0.0%	0.0%	57.1%
More than Half (3)	14.3%	0.0%	0.0%	14.3%
Less than Half (4)	0.0%	0.0%	0.0%	0.0%
Mean	1.9	.	.	1.9
Median	2	.	.	2
Count	7	0	0	7

### 3. Why did you take this course? Choose all that apply.

	Response by Course Level			
	Lower	Upper	Grad	Total
3a. The course fulfills a general education requirement.	0.0%	0.0%	0.0%	0.0%
3b. The course fulfills a requirement in my major.	0.0%	0.0%	0.0%	0.0%
3c. I have enjoyed the professor's class(es) in the past.	12.5%	0.0%	0.0%	12.5%
3d. The course will improve job/career opportunities.	50.0%	0.0%	0.0%	50.0%
3e. The course sounded interesting to me.	25.0%	0.0%	0.0%	25.0%

### 4. How would you rate the overall quality of instruction in this course?

	Response by Course Level			
	Lower	Upper	Grad	Total
Excellent (6)	85.7%	0.0%	0.0%	85.7%
Very Good (5)	14.3%	0.0%	0.0%	14.3%
Good (4)	0.0%	0.0%	0.0%	0.0%
Fair (3)	0.0%	0.0%	0.0%	0.0%
Poor (2)	0.0%	0.0%	0.0%	0.0%
Unsatisfactory (1)	0.0%	0.0%	0.0%	0.0%
Mean	5.9	.	.	5.9
Median	6	.	.	6
Count	7	0	0	7



### 5. How would you rate your professor's specific contribution to you learning in this course?

	Response by Course Level			
	Lower	Upper	Grad	Total
Excellent (6)	85.7%	0.0%	0.0%	85.7%
Very Good (5)	14.3%	0.0%	0.0%	14.3%
Good (4)	0.0%	0.0%	0.0%	0.0%
Fair (3)	0.0%	0.0%	0.0%	0.0%
Poor (2)	0.0%	0.0%	0.0%	0.0%
Unsatisfactory (1)	0.0%	0.0%	0.0%	0.0%
Mean	5.9	.	.	5.9
Median	6	.	.	6
Count	7	0	0	7

