

California State University, San Bernardino

CSUSB ScholarWorks

Faculty Senate records

Arthur E. Nelson University Archives

12-13-2018

Student Opinion of Teaching Effectiveness (SOTE) - College of Arts & Letters Spring 2018 Term Summary

CSUSB Faculty Senate

Follow this and additional works at: <https://scholarworks.lib.csusb.edu/facultysenate>

Recommended Citation

CSUSB Faculty Senate, "Student Opinion of Teaching Effectiveness (SOTE) - College of Arts & Letters Spring 2018 Term Summary" (2018). *Faculty Senate records*. 216.
<https://scholarworks.lib.csusb.edu/facultysenate/216>

This Report is brought to you for free and open access by the Arthur E. Nelson University Archives at CSUSB ScholarWorks. It has been accepted for inclusion in Faculty Senate records by an authorized administrator of CSUSB ScholarWorks. For more information, please contact scholarworks@csusb.edu.

Student Opinion of Teaching Effectiveness (SOTE)- College of Arts & Letters Spring 2018 Term Summary

1. Rate your interest in the subject matter of this course before you took the class.

	Response by Course Level			
	Lower	Upper	Grad	Total
Very High (1)	26.5%	40.8%	46.7%	33.0%
High (2)	23.6%	26.7%	28.0%	25.0%
Moderately High (3)	21.5%	16.5%	17.3%	19.2%
Moderately Low (4)	11.2%	7.0%	5.3%	9.3%
Low (5)	11.7%	6.3%	1.3%	9.2%
Very Low (6)	5.6%	2.8%	1.3%	4.3%
Mean	2.7	2.2	1.9	2.5
Median	2	2	2	2
Count	3456	2747	75	6278

2. How many class sessions did you attend?

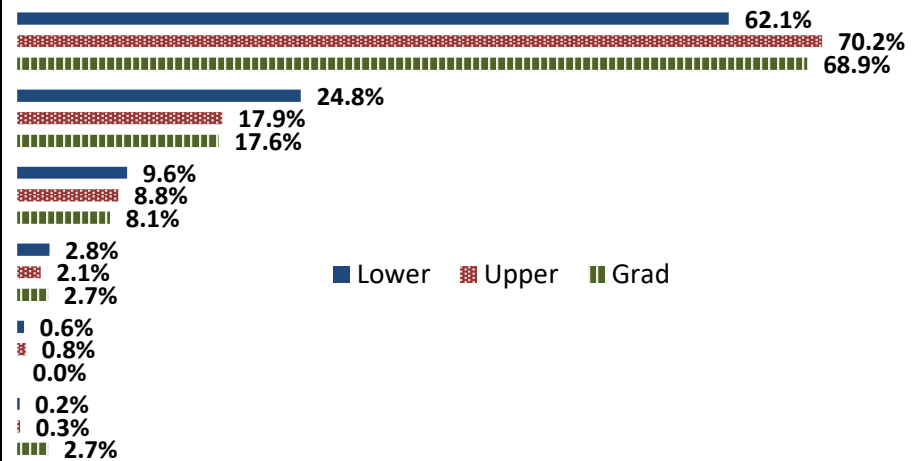
	Response by Course Level			
	Lower	Upper	Grad	Total
All (1)	42.1%	43.3%	42.9%	42.6%
Almost All (2)	52.8%	52.2%	57.1%	52.6%
More than Half (3)	4.3%	4.1%	0.0%	4.1%
Less than Half (4)	0.8%	0.4%	0.0%	0.6%
Mean	1.6	1.6	1.6	1.6
Median	2	2	2	2
Count	3454	2734	77	6265

3. Why did you take this course? Choose all that apply.

	Response by Course Level			
	Lower	Upper	Grad	Total
3a. The course fulfills a general education requirement.	70.9%	36.8%	31.7%	55.7%
3b. The course fulfills a requirement in my major.	22.8%	62.3%	82.3%	40.6%
3c. I have enjoyed the professor's class(es) in the past.	6.7%	17.2%	25.3%	11.5%
3d. The course will improve job/career opportunities.	13.2%	23.5%	25.3%	17.8%
3e. The course sounded interesting to me.	24.1%	34.9%	31.7%	28.8%

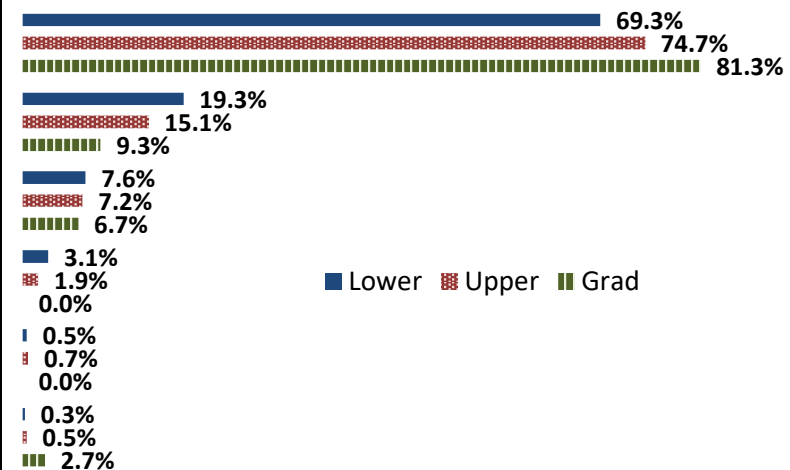
4. How would you rate the overall quality of instruction in this course?

	Response by Course Level			
	Lower	Upper	Grad	Total
Excellent (6)	62.1%	70.2%	68.9%	65.7%
Very Good (5)	24.8%	17.9%	17.6%	21.7%
Good (4)	9.6%	8.8%	8.1%	9.2%
Fair (3)	2.8%	2.1%	2.7%	2.5%
Poor (2)	0.6%	0.8%	0.0%	0.7%
Unsatisfactory (1)	0.2%	0.3%	2.7%	0.3%
Mean	5.4	5.5	5.4	5.5
Median	6	6	6	6
Count	3459	2728	74	6261



5. How would you rate your professor's specific contribution to you learning in this course?

	Response by Course Level			
	Lower	Upper	Grad	Total
Excellent (6)	69.3%	74.7%	81.3%	71.8%
Very Good (5)	19.3%	15.1%	9.3%	17.4%
Good (4)	7.6%	7.2%	6.7%	7.4%
Fair (3)	3.1%	1.9%	0.0%	2.5%
Poor (2)	0.5%	0.7%	0.0%	0.6%
Unsatisfactory (1)	0.3%	0.5%	2.7%	0.4%
Mean	5.5	5.6	5.6	5.6
Median	6	6	6	6
Count	3469	2741	75	6285



Student Opinion of Teaching Effectiveness (SOTE)- College of Business and Public Administration Spring 2018 Term Summary

1. Rate your interest in the subject matter of this course before you took the class.

	Response by Course Level			
	Lower	Upper	Grad	Total
Very High (1)	25.6%	33.1%	37.1%	31.7%
High (2)	30.4%	28.1%	28.2%	28.6%
Moderately High (3)	19.7%	18.9%	19.7%	19.1%
Moderately Low (4)	9.4%	8.4%	7.8%	8.6%
Low (5)	11.5%	8.0%	5.4%	8.6%
Very Low (6)	3.4%	3.5%	1.7%	3.4%
Mean	2.6	2.4	2.2	2.4
Median	2	2	2	2
Count	938	2978	294	4210

2. How many class sessions did you attend?

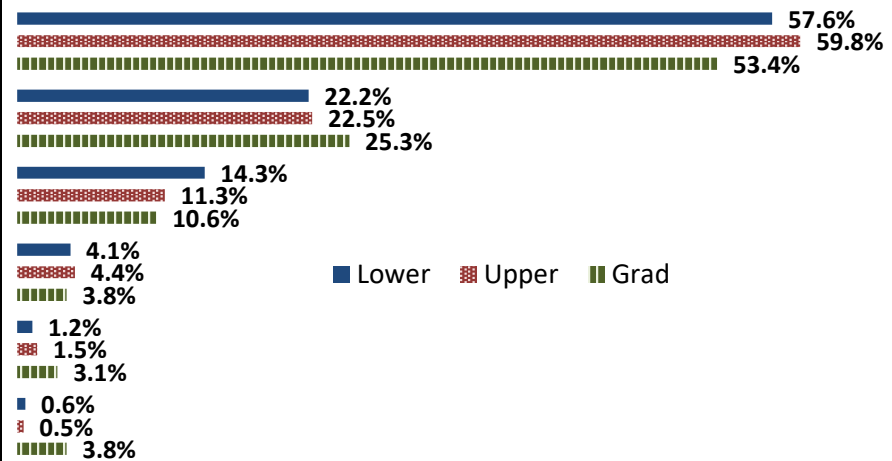
	Response by Course Level			
	Lower	Upper	Grad	Total
All (1)	55.9%	54.1%	62.1%	55.1%
Almost All (2)	41.0%	42.9%	36.6%	42.0%
More than Half (3)	2.7%	2.5%	1.4%	2.4%
Less than Half (4)	0.4%	0.6%	0.0%	0.5%
Mean	1.5	1.5	1.4	1.5
Median	1	1	1	1
Count	941	3001	290	4232

3. Why did you take this course? Choose all that apply.

	Response by Course Level			
	Lower	Upper	Grad	Total
3a. The course fulfills a general education requirement.	43.6%	28.1%	41.0%	32.5%
3b. The course fulfills a requirement in my major.	56.1%	76.4%	73.3%	71.6%
3c. I have enjoyed the professor's class(es) in the past.	2.3%	6.7%	10.8%	6.0%
3d. The course will improve job/career opportunities.	16.6%	25.7%	28.7%	23.9%
3e. The course sounded interesting to me.	17.9%	16.1%	16.6%	16.5%

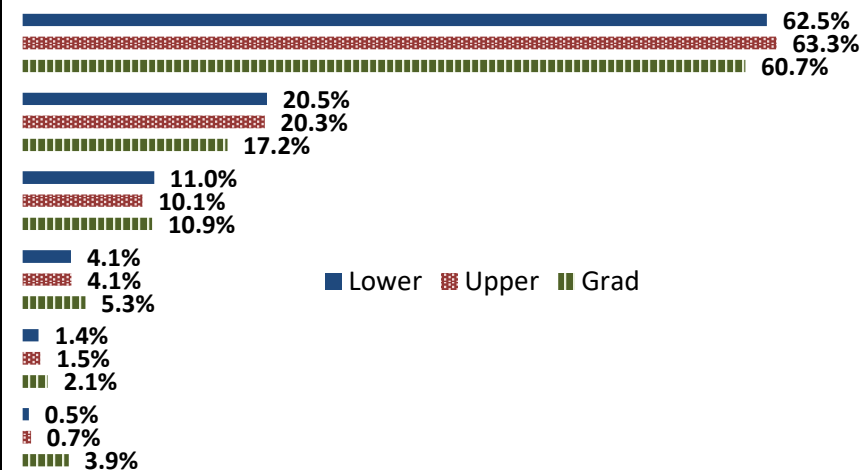
4. How would you rate the overall quality of instruction in this course?

	Response by Course Level			
	Lower	Upper	Grad	Total
Excellent (6)	57.6%	59.8%	53.4%	58.8%
Very Good (5)	22.2%	22.5%	25.3%	22.6%
Good (4)	14.3%	11.3%	10.6%	11.9%
Fair (3)	4.1%	4.4%	3.8%	4.3%
Poor (2)	1.2%	1.5%	3.1%	1.6%
Unsatisfactory (1)	0.6%	0.5%	3.8%	0.8%
Mean	5.3	5.3	5.1	5.3
Median	6	6	6	6
Count	958	2990	292	4240



5. How would you rate your professor's specific contribution to your learning in this course?

	Response by Course Level			
	Lower	Upper	Grad	Total
Excellent (6)	62.5%	63.3%	60.7%	63.0%
Very Good (5)	20.5%	20.3%	17.2%	20.2%
Good (4)	11.0%	10.1%	10.9%	10.3%
Fair (3)	4.1%	4.1%	5.3%	4.2%
Poor (2)	1.4%	1.5%	2.1%	1.5%
Unsatisfactory (1)	0.5%	0.7%	3.9%	0.9%
Mean	5.4	5.4	5.2	5.4
Median	6	6	6	6
Count	960	3028	285	4273



Student Opinion of Teaching Effectiveness (SOTE)- College of Education Spring 2018 Term Summary

1. Rate your interest in the subject matter of this course before you took the class.

	Response by Course Level			
	Lower	Upper	Grad	Total
Very High (1)	34.7%	32.9%	50.3%	43.4%
High (2)	40.0%	29.5%	28.2%	29.5%
Moderately High (3)	16.0%	18.5%	12.7%	14.8%
Moderately Low (4)	2.7%	7.7%	4.8%	5.6%
Low (5)	4.0%	7.7%	3.5%	4.9%
Very Low (6)	2.7%	3.7%	0.5%	1.7%
Mean	2.1	2.4	1.8	2.0
Median	2	2	1	2
Count	75	325	599	999

2. How many class sessions did you attend?

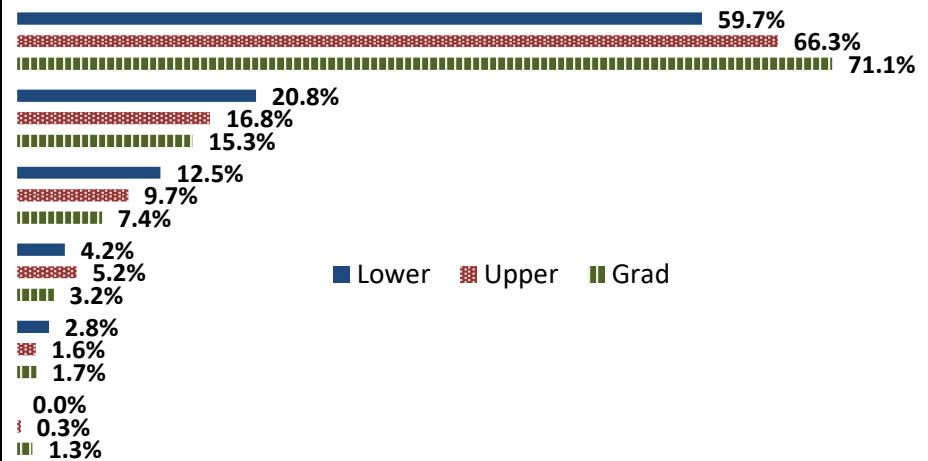
	Response by Course Level			
	Lower	Upper	Grad	Total
All (1)	78.4%	66.3%	76.1%	73.1%
Almost All (2)	20.3%	32.5%	23.3%	26.1%
More than Half (3)	1.4%	0.9%	0.2%	0.5%
Less than Half (4)	0.0%	0.3%	0.5%	0.4%
Mean	1.2	1.4	1.3	1.3
Median	1	1	1	1
Count	74	326	602	1002

3. Why did you take this course? Choose all that apply.

	Response by Course Level			
	Lower	Upper	Grad	Total
3a. The course fulfills a general education requirement.	32.9%	32.4%	32.1%	32.2%
3b. The course fulfills a requirement in my major.	77.6%	65.8%	77.4%	73.6%
3c. I have enjoyed the professor's class(es) in the past.	2.6%	6.9%	22.2%	15.8%
3d. The course will improve job/career opportunities.	18.4%	25.3%	29.4%	27.2%
3e. The course sounded interesting to me.	25.0%	9.8%	12.9%	12.8%

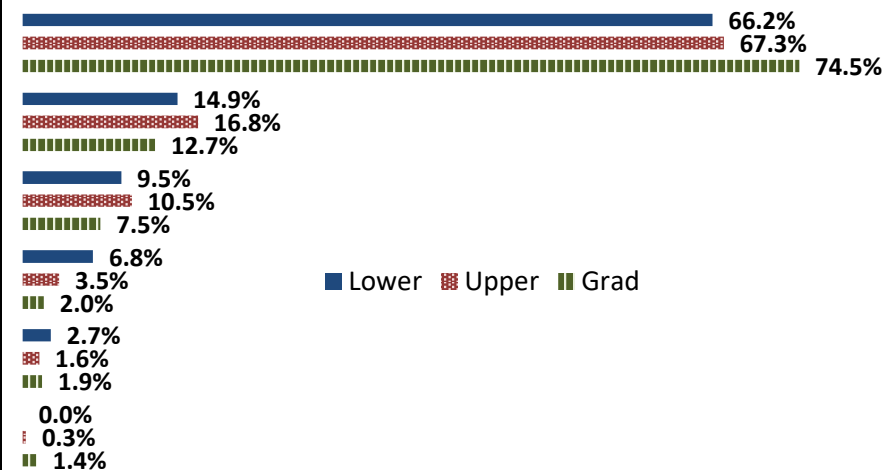
4. How would you rate the overall quality of instruction in this course?

	Response by Course Level			
	Lower	Upper	Grad	Total
Excellent (6)	59.7%	66.3%	71.1%	68.8%
Very Good (5)	20.8%	16.8%	15.3%	16.2%
Good (4)	12.5%	9.7%	7.4%	8.5%
Fair (3)	4.2%	5.2%	3.2%	3.9%
Poor (2)	2.8%	1.6%	1.7%	1.7%
Unsatisfactory (1)	0.0%	0.3%	1.3%	0.9%
Mean	5.3	5.4	5.5	5.4
Median	6	6	6	6
Count	72	309	595	976



5. How would you rate your professor's specific contribution to you learning in this course?

	Response by Course Level			
	Lower	Upper	Grad	Total
Excellent (6)	66.2%	67.3%	74.5%	71.6%
Very Good (5)	14.9%	16.8%	12.7%	14.2%
Good (4)	9.5%	10.5%	7.5%	8.6%
Fair (3)	6.8%	3.5%	2.0%	2.9%
Poor (2)	2.7%	1.6%	1.9%	1.8%
Unsatisfactory (1)	0.0%	0.3%	1.4%	0.9%
Mean	5.4	5.4	5.5	5.5
Median	6	6	6	6
Count	74	315	589	978



Student Opinion of Teaching Effectiveness (SOTE)- College of Natural Sciences Spring 2018 Term Summary

1. Rate your interest in the subject matter of this course before you took the class.

	Response by Course Level			
	Lower	Upper	Grad	Total
Very High (1)	21.9%	37.2%	27.3%	28.3%
High (2)	23.4%	28.2%	33.0%	25.5%
Moderately High (3)	21.3%	18.3%	29.6%	20.1%
Moderately Low (4)	11.6%	7.9%	3.4%	10.0%
Low (5)	13.6%	5.8%	5.7%	10.3%
Very Low (6)	8.2%	2.6%	1.1%	5.8%
Mean	3.0	2.2	2.3	2.7
Median	3	2	2	2
Count	6011	4343	88	10442

2. How many class sessions did you attend?

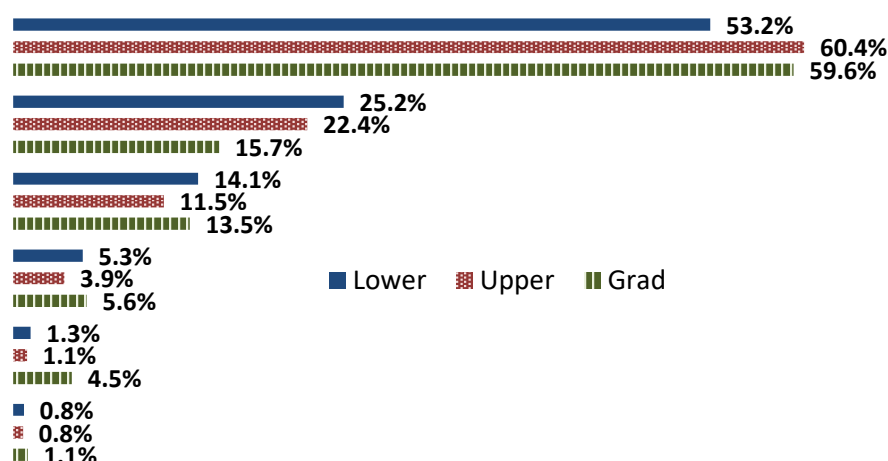
	Response by Course Level			
	Lower	Upper	Grad	Total
All (1)	65.8%	62.3%	70.0%	64.4%
Almost All (2)	31.0%	35.0%	28.9%	32.7%
More than Half (3)	2.6%	2.3%	1.1%	2.4%
Less than Half (4)	0.6%	0.4%	0.0%	0.5%
Mean	1.4	1.4	1.3	1.4
Median	1	1	1	1
Count	5927	4316	90	10333

3. Why did you take this course? Choose all that apply.

	Response by Course Level			
	Lower	Upper	Grad	Total
3a. The course fulfills a general education requirement.	56.3%	28.5%	25.8%	44.5%
3b. The course fulfills a requirement in my major.	47.8%	73.7%	77.4%	58.7%
3c. I have enjoyed the professor's class(es) in the past.	4.6%	13.5%	19.4%	8.4%
3d. The course will improve job/career opportunities.	10.1%	19.5%	15.1%	14.0%
3e. The course sounded interesting to me.	10.5%	19.2%	22.6%	14.2%

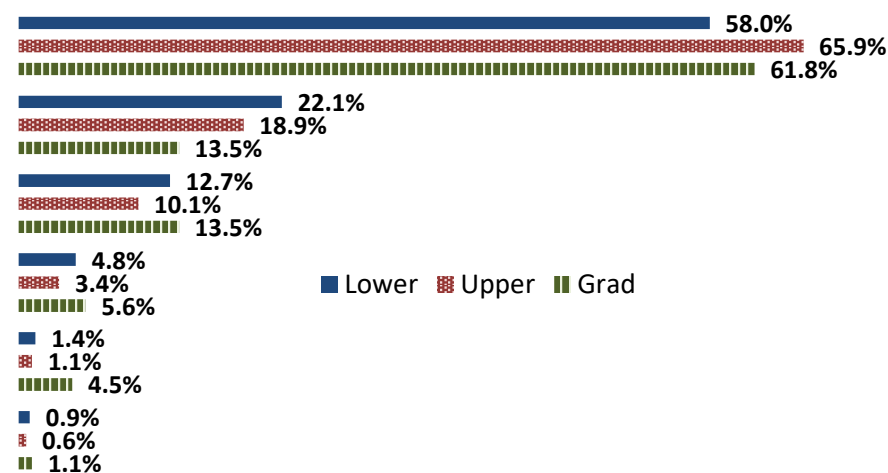
4. How would you rate the overall quality of instruction in this course?

	Response by Course Level			
	Lower	Upper	Grad	Total
Excellent (6)	53.2%	60.4%	59.6%	56.2%
Very Good (5)	25.2%	22.4%	15.7%	24.0%
Good (4)	14.1%	11.5%	13.5%	13.0%
Fair (3)	5.3%	3.9%	5.6%	4.7%
Poor (2)	1.3%	1.1%	4.5%	1.3%
Unsatisfactory (1)	0.8%	0.8%	1.1%	0.8%
Mean	5.2	5.3	5.2	5.3
Median	6	6	6	6
Count	6034	4390	89	10513



5. How would you rate your professor's specific contribution to your learning in this course?

	Response by Course Level			
	Lower	Upper	Grad	Total
Excellent (6)	58.0%	65.9%	61.8%	61.3%
Very Good (5)	22.1%	18.9%	13.5%	20.7%
Good (4)	12.7%	10.1%	13.5%	11.6%
Fair (3)	4.8%	3.4%	5.6%	4.2%
Poor (2)	1.4%	1.1%	4.5%	1.3%
Unsatisfactory (1)	0.9%	0.6%	1.1%	0.8%
Mean	5.3	5.4	5.2	5.3
Median	6	6	6	6
Count	6061	4369	89	10519



Student Opinion of Teaching Effectiveness (SOTE)- College of Social and Behavioral Sciences Spring 2018 Term Summary

1. Rate your interest in the subject matter of this course before you took the class.

	Response by Course Level			
	Lower	Upper	Grad	Total
Very High (1)	22.3%	32.9%	48.2%	30.2%
High (2)	25.8%	28.7%	26.2%	27.6%
Moderately High (3)	22.9%	19.3%	13.8%	20.2%
Moderately Low (4)	11.5%	8.0%	4.8%	9.0%
Low (5)	11.7%	7.4%	4.4%	8.7%
Very Low (6)	5.9%	3.7%	2.5%	4.4%
Mean	2.8	2.4	2.0	2.5
Median	3	2	2	2
Count	2900	5210	477	8587

2. How many class sessions did you attend?

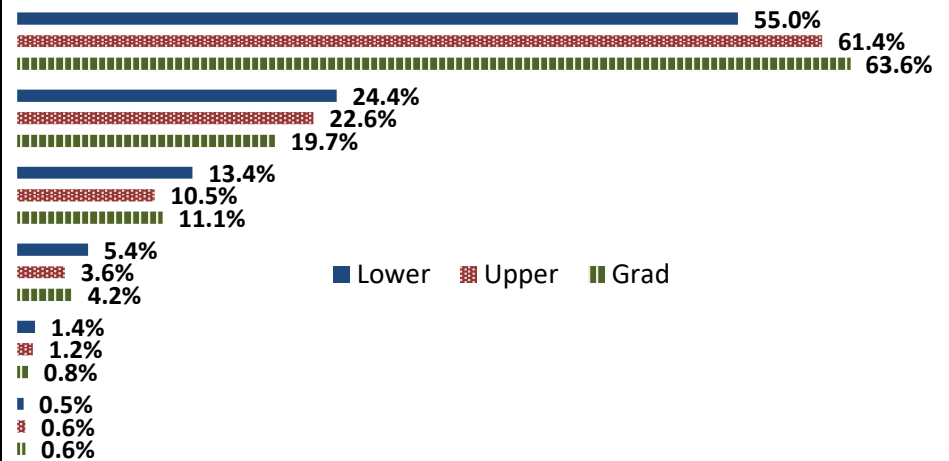
	Response by Course Level			
	Lower	Upper	Grad	Total
All (1)	49.0%	49.9%	70.0%	50.7%
Almost All (2)	45.5%	46.2%	29.4%	45.1%
More than Half (3)	4.4%	3.2%	0.4%	3.5%
Less than Half (4)	1.1%	0.7%	0.2%	0.8%
Mean	1.6	1.5	1.3	1.5
Median	2	2	1	1
Count	2911	5181	470	8562

3. Why did you take this course? Choose all that apply.

	Response by Course Level			
	Lower	Upper	Grad	Total
3a. The course fulfills a general education requirement.	69.5%	35.5%	35.2%	47.1%
3b. The course fulfills a requirement in my major.	30.3%	69.3%	78.4%	56.5%
3c. I have enjoyed the professor's class(es) in the past.	3.1%	13.3%	17.6%	10.1%
3d. The course will improve job/career opportunities.	9.4%	17.3%	29.0%	15.2%
3e. The course sounded interesting to me.	20.6%	31.1%	26.2%	27.2%

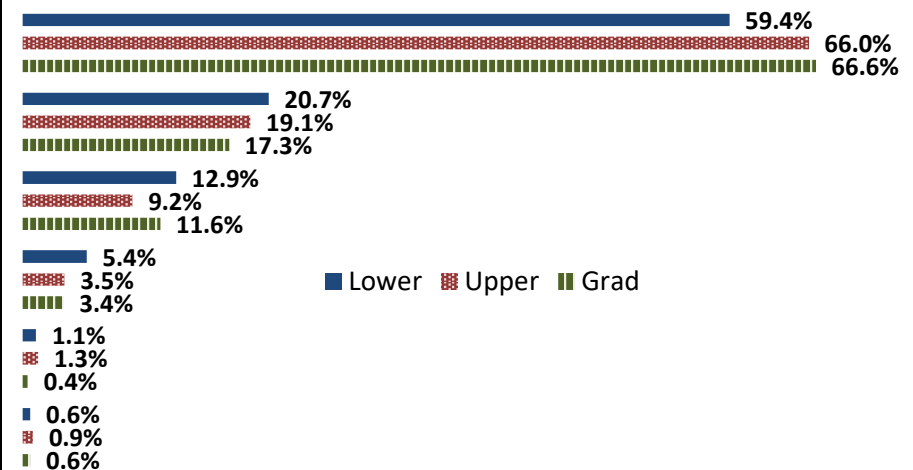
4. How would you rate the overall quality of instruction in this course?

	Response by Course Level			
	Lower	Upper	Grad	Total
Excellent (6)	55.0%	61.4%	63.6%	59.4%
Very Good (5)	24.4%	22.6%	19.7%	23.1%
Good (4)	13.4%	10.5%	11.1%	11.5%
Fair (3)	5.4%	3.6%	4.2%	4.3%
Poor (2)	1.4%	1.2%	0.8%	1.2%
Unsatisfactory (1)	0.5%	0.6%	0.6%	0.6%
Mean	5.2	5.4	5.4	5.3
Median	6	6	6	6
Count	2918	5199	478	8595



5. How would you rate your professor's specific contribution to your learning in this course?

	Response by Course Level			
	Lower	Upper	Grad	Total
Excellent (6)	59.4%	66.0%	66.6%	63.8%
Very Good (5)	20.7%	19.1%	17.3%	19.5%
Good (4)	12.9%	9.2%	11.6%	10.6%
Fair (3)	5.4%	3.5%	3.4%	4.1%
Poor (2)	1.1%	1.3%	0.4%	1.2%
Unsatisfactory (1)	0.6%	0.9%	0.6%	0.8%
Mean	5.3	5.4	5.4	5.4
Median	6	6	6	6
Count	2866	5202	467	8535



Student Opinion of Teaching Effectiveness (SOTE)- College of University Studies Winter 2018 Term Summary

1. Rate your interest in the subject matter of this course before you took the class.

	Response by Course Level			
	Lower	Upper	Grad	Total
Very High (1)	0.0%	0.0%	0.0%	0.0%
High (2)	0.0%	0.0%	0.0%	0.0%
Moderately High (3)	0.0%	0.0%	0.0%	0.0%
Moderately Low (4)	0.0%	0.0%	0.0%	0.0%
Low (5)	0.0%	0.0%	0.0%	0.0%
Very Low (6)	0.0%	0.0%	0.0%	0.0%
Mean
Median
Count	0	0	0	0

2. How many class sessions did you attend?

	Response by Course Level			
	Lower	Upper	Grad	Total
All (1)	0.0%	0.0%	0.0%	0.0%
Almost All (2)	0.0%	0.0%	0.0%	0.0%
More than Half (3)	0.0%	0.0%	0.0%	0.0%
Less than Half (4)	0.0%	0.0%	0.0%	0.0%
Mean
Median
Count	0	0	0	0

3. Why did you take this course? Choose all that apply.

	Response by Course Level			
	Lower	Upper	Grad	Total
3a. The course fulfills a general education requirement.	0.0%	0.0%	0.0%	0.0%
3b. The course fulfills a requirement in my major.	0.0%	0.0%	0.0%	0.0%
3c. I have enjoyed the professor's class(es) in the past.	0.0%	0.0%	0.0%	0.0%
3d. The course will improve job/career opportunities.	0.0%	0.0%	0.0%	0.0%
3e. The course sounded interesting to me.	0.0%	0.0%	0.0%	0.0%

4. How would you rate the overall quality of instruction in this course?

	Response by Course Level			
	Lower	Upper	Grad	Total
Excellent (6)	0.0%	0.0%	0.0%	0.0%
Very Good (5)	0.0%	0.0%	0.0%	0.0%
Good (4)	0.0%	0.0%	0.0%	0.0%
Fair (3)	0.0%	0.0%	0.0%	0.0%
Poor (2)	0.0%	0.0%	0.0%	0.0%
Unsatisfactory (1)	0.0%	0.0%	0.0%	0.0%
Mean
Median
Count	0	0	0	0

0.0%
0.0%
0.0%
0.0%
0.0%
0.0%
0.0%
0.0%
0.0%
0.0%
0.0%
0.0%
0.0%
0.0%
0.0%
0.0%

■ Lower ■ Upper ■ Grad

5. How would you rate your professor's specific contribution to you learning in this course?

	Response by Course Level			
	Lower	Upper	Grad	Total
Excellent (6)	0.0%	0.0%	0.0%	0.0%
Very Good (5)	0.0%	0.0%	0.0%	0.0%
Good (4)	0.0%	0.0%	0.0%	0.0%
Fair (3)	0.0%	0.0%	0.0%	0.0%
Poor (2)	0.0%	0.0%	0.0%	0.0%
Unsatisfactory (1)	0.0%	0.0%	0.0%	0.0%
Mean
Median
Count	0	0	0	0

0.0%
0.0%
0.0%
0.0%
0.0%
0.0%
0.0%
0.0%
0.0%
0.0%
0.0%
0.0%
0.0%

■ Lower ■ Upper ■ Grad