

California State University, San Bernardino

CSUSB ScholarWorks

Faculty Senate records

Arthur E. Nelson University Archives

7-8-2015

Student Opinion of Teaching Effectiveness (SOTE) - College of Arts & Letters Winter 2015 Term Summary

CSUSB Faculty Senate

Follow this and additional works at: <https://scholarworks.lib.csusb.edu/facultysenate>

Recommended Citation

CSUSB Faculty Senate, "Student Opinion of Teaching Effectiveness (SOTE) - College of Arts & Letters Winter 2015 Term Summary" (2015). *Faculty Senate records*. 215.
<https://scholarworks.lib.csusb.edu/facultysenate/215>

This Report is brought to you for free and open access by the Arthur E. Nelson University Archives at CSUSB ScholarWorks. It has been accepted for inclusion in Faculty Senate records by an authorized administrator of CSUSB ScholarWorks. For more information, please contact scholarworks@csusb.edu.

Student Opinion of Teaching Effectiveness (SOTE)- College of Arts & Letters Winter 2015 Term Summary

1. Rate your interest in the subject matter of this course before you took the class.

	Response by Course Level			
	Lower	Upper	Grad	Total
Very High (1)	24.2%	34.5%	62.6%	28.8%
High (2)	26.8%	24.4%	23.2%	25.9%
Moderately High (3)	23.8%	21.1%	9.5%	22.5%
Moderately Low (4)	11.2%	10.0%	3.2%	10.6%
Low (5)	9.6%	7.1%	1.1%	8.5%
Very Low (6)	4.3%	2.9%	0.5%	3.7%
Mean	2.7	2.4	1.6	2.6
Median	2	2	1	2
Count	5509	3269	190	8968

2. How many class sessions did you attend?

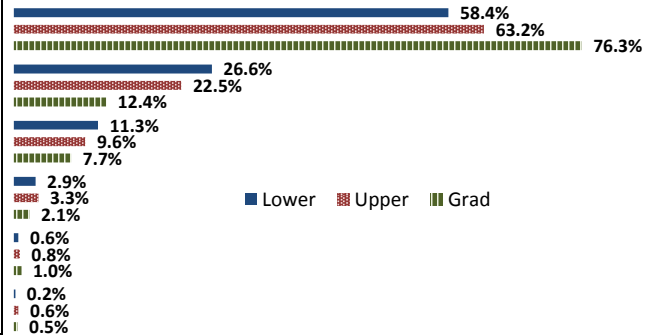
	Response by Course Level			
	Lower	Upper	Grad	Total
All (1)	51.7%	49.8%	44.2%	50.9%
Almost All (2)	44.8%	47.1%	54.7%	45.8%
More than Half (3)	3.1%	2.7%	0.0%	2.9%
Less than Half (4)	0.4%	0.4%	1.1%	0.4%
Mean	1.5	1.5	1.6	1.5
Median	1	2	2	1
Count	5498	3239	190	8927

3. Why did you take this course? Choose all that apply.

	Response by Course Level			
	Lower	Upper	Grad	Total
3a. The course fulfills a general education requirement.	73.0%	41.1%	31.7%	60.6%
3b. The course fulfills a requirement in my major.	22.6%	60.6%	79.4%	37.5%
3c. I have enjoyed the professor's class(es) in the past.	6.9%	14.5%	44.2%	10.5%
3d. The course will improve job/career opportunities.	14.6%	22.4%	36.2%	17.8%
3e. The course sounded interesting to me.	22.3%	34.4%	48.7%	27.2%

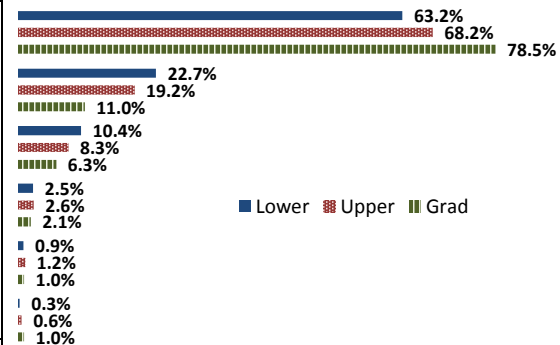
4. How would you rate the overall quality of instruction in this course?

	Response by Course Level			
	Lower	Upper	Grad	Total
Excellent (6)	58.4%	63.2%	76.3%	60.5%
Very Good (5)	26.6%	22.5%	12.4%	24.8%
Good (4)	11.3%	9.6%	7.7%	10.6%
Fair (3)	2.9%	3.3%	2.1%	3.0%
Poor (2)	0.6%	0.8%	1.0%	0.7%
Unsatisfactory (1)	0.2%	0.6%	0.5%	0.3%
Mean	5.4	5.4	5.6	5.4
Median	6	6	6	6
Count	5535	3255	194	8984



5. How would you rate your professor's specific contribution to you learning in this course?

	Response by Course Level			
	Lower	Upper	Grad	Total
Excellent (6)	63.2%	68.2%	78.5%	65.4%
Very Good (5)	22.7%	19.2%	11.0%	21.2%
Good (4)	10.4%	8.3%	6.3%	9.6%
Fair (3)	2.5%	2.6%	2.1%	2.5%
Poor (2)	0.9%	1.2%	1.0%	1.0%
Unsatisfactory (1)	0.3%	0.6%	1.0%	0.4%
Mean	5.4	5.5	5.6	5.5
Median	6	6	6	6
Count	5469	3253	191	8913



Student Opinion of Teaching Effectiveness (SOTE)- College of Business and Public Administration Winter 2015 Term Summary

1. Rate your interest in the subject matter of this course before you took the class.

	Response by Course Level			
	Lower	Upper	Grad	Total
Very High (1)	16.6%	29.2%	27.6%	26.3%
High (2)	24.2%	27.6%	29.5%	27.1%
Moderately High (3)	25.9%	21.9%	20.9%	22.6%
Moderately Low (4)	12.6%	10.0%	11.6%	10.7%
Low (5)	13.0%	8.1%	5.7%	8.8%
Very Low (6)	7.8%	3.3%	4.7%	4.4%
Mean	3.0	2.5	2.5	2.6
Median	3	2	2	2
Count	915	2801	597	4313

2. How many class sessions did you attend?

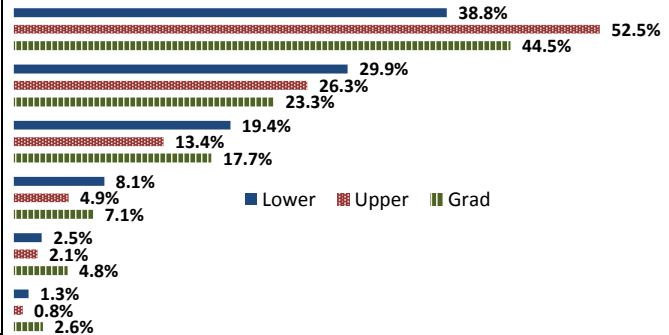
	Response by Course Level			
	Lower	Upper	Grad	Total
All (1)	55.6%	57.8%	70.7%	59.1%
Almost All (2)	40.7%	39.6%	26.3%	38.0%
More than Half (3)	2.5%	2.2%	1.9%	2.2%
Less than Half (4)	1.2%	0.4%	1.2%	0.7%
Mean	1.5	1.5	1.3	1.4
Median	1	1	1	1
Count	909	2798	593	4300

3. Why did you take this course? Choose all that apply.

	Response by Course Level			
	Lower	Upper	Grad	Total
3a. The course fulfills a general education requirement.	36.2%	25.5%	35.4%	29.1%
3b. The course fulfills a requirement in my major.	68.4%	77.7%	69.6%	74.6%
3c. I have enjoyed the professor's class(es) in the past.	2.8%	7.9%	7.6%	6.7%
3d. The course will improve job/career opportunities.	19.3%	25.5%	26.2%	24.3%
3e. The course sounded interesting to me.	13.0%	17.6%	13.7%	16.1%

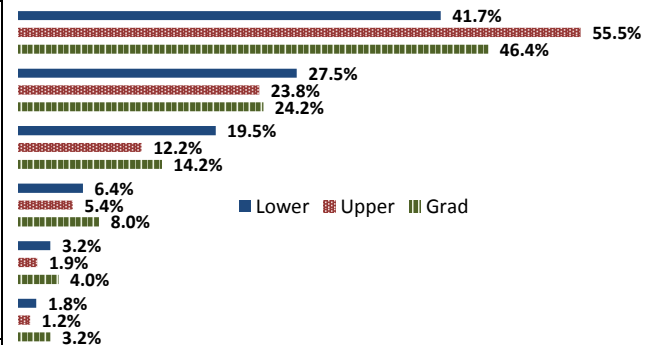
4. How would you rate the overall quality of instruction in this course?

	Response by Course Level			
	Lower	Upper	Grad	Total
Excellent (6)	38.8%	52.5%	44.5%	48.5%
Very Good (5)	29.9%	26.3%	23.3%	26.7%
Good (4)	19.4%	13.4%	17.7%	15.3%
Fair (3)	8.1%	4.9%	7.1%	5.9%
Poor (2)	2.5%	2.1%	4.8%	2.5%
Unsatisfactory (1)	1.3%	0.8%	2.6%	1.2%
Mean	4.9	5.2	4.9	5.1
Median	5	6	5	5
Count	921	2814	605	4340



5. How would you rate your professor's specific contribution to you learning in this course?

	Response by Course Level			
	Lower	Upper	Grad	Total
Excellent (6)	41.7%	55.5%	46.4%	51.4%
Very Good (5)	27.5%	23.8%	24.2%	24.6%
Good (4)	19.5%	12.2%	14.2%	14.0%
Fair (3)	6.4%	5.4%	8.0%	6.0%
Poor (2)	3.2%	1.9%	4.0%	2.5%
Unsatisfactory (1)	1.8%	1.2%	3.2%	1.6%
Mean	4.9	5.2	4.9	5.1
Median	5	6	5	6
Count	907	2817	599	4323



Student Opinion of Teaching Effectiveness (SOTE)- College of Education Winter 2015 Term Summary

1. Rate your interest in the subject matter of this course before you took the class.

	Response by Course Level			
	Lower	Upper	Grad	Total
Very High (1)	42.7%	38.9%	45.9%	43.2%
High (2)	27.0%	29.2%	26.9%	27.7%
Moderately High (3)	19.1%	20.8%	16.7%	18.3%
Moderately Low (4)	4.5%	5.3%	5.6%	5.4%
Low (5)	5.6%	4.2%	3.7%	4.0%
Very Low (6)	1.1%	1.5%	1.3%	1.4%
Mean	2.1	2.1	2.0	2.0
Median	2	2	2	2
Count	89	524	844	1457

2. How many class sessions did you attend?

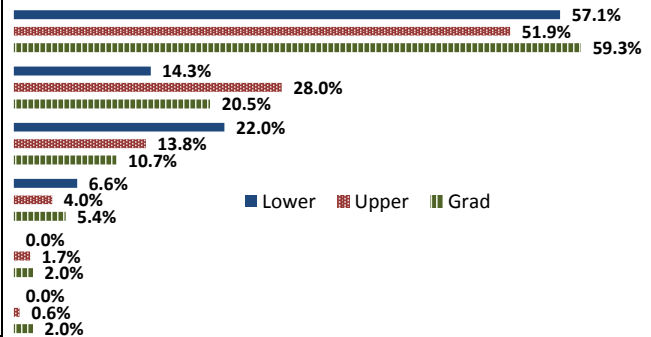
	Response by Course Level			
	Lower	Upper	Grad	Total
All (1)	72.7%	71.7%	78.3%	75.6%
Almost All (2)	27.3%	27.6%	21.1%	23.8%
More than Half (3)	0.0%	0.6%	0.1%	0.3%
Less than Half (4)	0.0%	0.2%	0.5%	0.4%
Mean	1.3	1.3	1.2	1.3
Median	1	1	1	1
Count	88	519	821	1428

3. Why did you take this course? Choose all that apply.

	Response by Course Level			
	Lower	Upper	Grad	Total
3a. The course fulfills a general education requirement.	38.3%	19.8%	24.8%	23.8%
3b. The course fulfills a requirement in my major.	48.9%	72.7%	80.2%	75.5%
3c. I have enjoyed the professor's class(es) in the past.	6.4%	6.6%	12.0%	9.7%
3d. The course will improve job/career opportunities.	28.7%	33.4%	27.8%	29.9%
3e. The course sounded interesting to me.	35.1%	13.8%	12.1%	14.1%

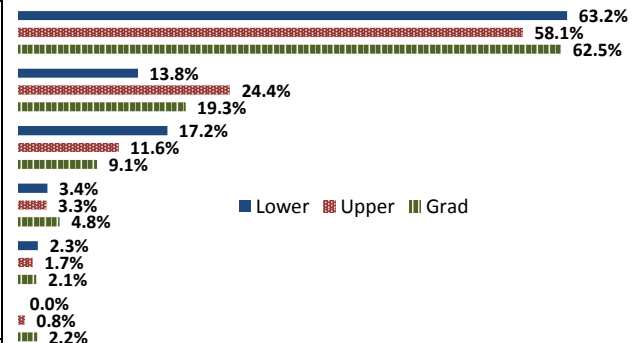
4. How would you rate the overall quality of instruction in this course?

	Response by Course Level			
	Lower	Upper	Grad	Total
Excellent (6)	57.1%	51.9%	59.3%	56.5%
Very Good (5)	14.3%	28.0%	20.5%	22.8%
Good (4)	22.0%	13.8%	10.7%	12.5%
Fair (3)	6.6%	4.0%	5.4%	5.0%
Poor (2)	0.0%	1.7%	2.0%	1.8%
Unsatisfactory (1)	0.0%	0.6%	2.0%	1.4%
Mean	5.2	5.2	5.2	5.2
Median	6	6	6	6
Count	91	522	847	1460



5. How would you rate your professor's specific contribution to you learning in this course?

	Response by Course Level			
	Lower	Upper	Grad	Total
Excellent (6)	63.2%	58.1%	62.5%	61.0%
Very Good (5)	13.8%	24.4%	19.3%	20.8%
Good (4)	17.2%	11.6%	9.1%	10.5%
Fair (3)	3.4%	3.3%	4.8%	4.2%
Poor (2)	2.3%	1.7%	2.1%	2.0%
Unsatisfactory (1)	0.0%	0.8%	2.2%	1.5%
Mean	5.3	5.3	5.3	5.3
Median	6	6	6	6
Count	87	516	825	1428



Student Opinion of Teaching Effectiveness (SOTE)- College of Natural Sciences Winter 2015 Term Summary

1. Rate your interest in the subject matter of this course before you took the class.

	Response by Course Level			
	Lower	Upper	Grad	Total
Very High (1)	26.5%	36.3%	41.1%	30.1%
High (2)	25.8%	26.9%	32.9%	26.3%
Moderately High (3)	20.5%	18.6%	12.3%	19.7%
Moderately Low (4)	10.2%	9.1%	8.2%	9.8%
Low (5)	10.5%	5.9%	2.7%	8.9%
Very Low (6)	6.4%	3.2%	2.7%	5.3%
Mean	2.7	2.3	2.1	2.6
Median	2	2	2	2
Count	6908	3630	146	10684

2. How many class sessions did you attend?

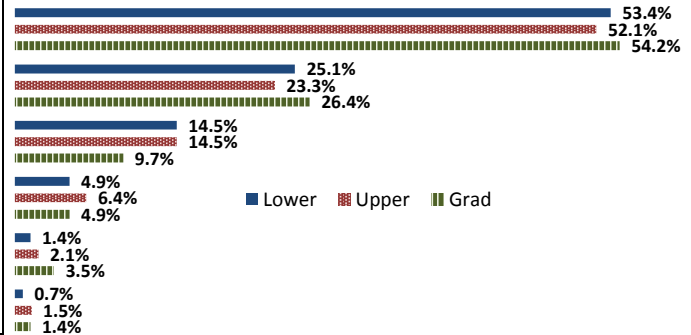
	Response by Course Level			
	Lower	Upper	Grad	Total
All (1)	65.9%	63.9%	71.1%	65.3%
Almost All (2)	31.6%	34.2%	27.5%	32.5%
More than Half (3)	2.1%	1.7%	0.7%	2.0%
Less than Half (4)	0.3%	0.2%	0.7%	0.3%
Mean	1.4	1.4	1.3	1.4
Median	1	1	1	1
Count	6891	3586	142	10619

3. Why did you take this course? Choose all that apply.

	Response by Course Level			
	Lower	Upper	Grad	Total
3a. The course fulfills a general education requirement.	53.5%	22.7%	29.4%	42.9%
3b. The course fulfills a requirement in my major.	48.4%	80.7%	73.9%	59.5%
3c. I have enjoyed the professor's class(es) in the past.	4.1%	12.7%	22.9%	7.2%
3d. The course will improve job/career opportunities.	12.0%	22.0%	22.9%	15.5%
3e. The course sounded interesting to me.	16.9%	19.3%	31.4%	17.9%

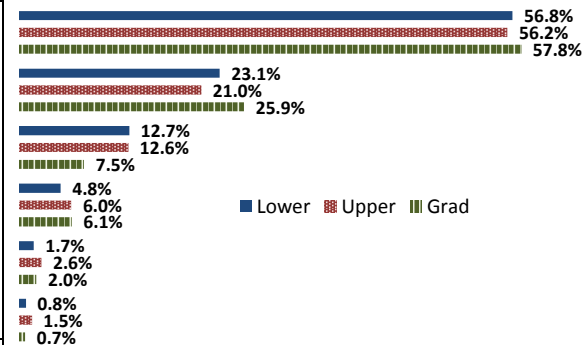
4. How would you rate the overall quality of instruction in this course?

	Response by Course Level			
	Lower	Upper	Grad	Total
Excellent (6)	53.4%	52.1%	54.2%	53.0%
Very Good (5)	25.1%	23.3%	26.4%	24.5%
Good (4)	14.5%	14.5%	9.7%	14.4%
Fair (3)	4.9%	6.4%	4.9%	5.4%
Poor (2)	1.4%	2.1%	3.5%	1.7%
Unsatisfactory (1)	0.7%	1.5%	1.4%	1.0%
Mean	5.2	5.1	5.2	5.2
Median	6	6	6	6
Count	6925	3628	144	10697



5. How would you rate your professor's specific contribution to you learning in this course?

	Response by Course Level			
	Lower	Upper	Grad	Total
Excellent (6)	56.8%	56.2%	57.8%	56.6%
Very Good (5)	23.1%	21.0%	25.9%	22.4%
Good (4)	12.7%	12.6%	7.5%	12.6%
Fair (3)	4.8%	6.0%	6.1%	5.3%
Poor (2)	1.7%	2.6%	2.0%	2.0%
Unsatisfactory (1)	0.8%	1.5%	0.7%	1.1%
Mean	5.3	5.2	5.3	5.2
Median	6	6	6	6
Count	6951	3620	147	10718



Student Opinion of Teaching Effectiveness (SOTE)- College of Social and Behavioral Sciences Winter 2015 Term Summary

1. Rate your interest in the subject matter of this course before you took the class.

	Response by Course Level			
	Lower	Upper	Grad	Total
Very High (1)	21.4%	31.5%	41.0%	28.0%
High (2)	25.0%	27.8%	26.2%	26.6%
Moderately High (3)	23.2%	19.9%	19.9%	21.3%
Moderately Low (4)	13.2%	8.8%	5.3%	10.4%
Low (5)	11.8%	7.5%	5.0%	9.1%
Very Low (6)	5.3%	4.4%	2.6%	4.7%
Mean	2.8	2.5	2.1	2.6
Median	3	2	2	2
Count	4113	5458	583	10154

2. How many class sessions did you attend?

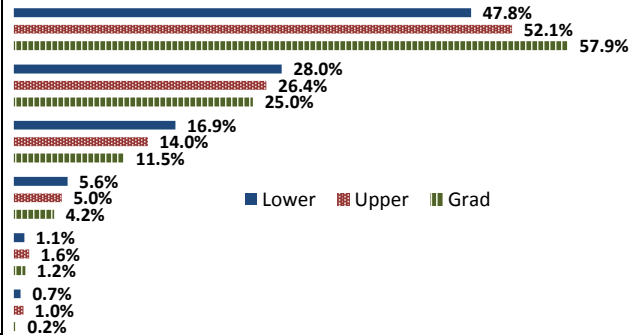
	Response by Course Level			
	Lower	Upper	Grad	Total
All (1)	53.3%	55.0%	59.0%	54.5%
Almost All (2)	42.3%	41.9%	39.1%	41.9%
More than Half (3)	3.6%	2.7%	1.4%	3.0%
Less than Half (4)	0.8%	0.5%	0.5%	0.6%
Mean	1.5	1.5	1.4	1.5
Median	1	1	1	1
Count	4093	5453	586	10132

3. Why did you take this course? Choose all that apply.

	Response by Course Level			
	Lower	Upper	Grad	Total
3a. The course fulfills a general education requirement.	69.6%	31.7%	32.8%	47.1%
3b. The course fulfills a requirement in my major.	33.3%	70.9%	79.4%	56.2%
3c. I have enjoyed the professor's class(es) in the past.	2.6%	12.7%	17.7%	8.9%
3d. The course will improve job/career opportunities.	10.4%	20.6%	28.2%	16.9%
3e. The course sounded interesting to me.	20.6%	33.9%	18.3%	27.6%

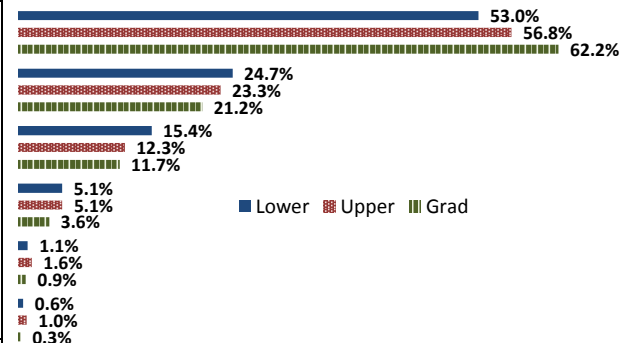
4. How would you rate the overall quality of instruction in this course?

	Response by Course Level			
	Lower	Upper	Grad	Total
Excellent (6)	47.8%	52.1%	57.9%	50.7%
Very Good (5)	28.0%	26.4%	25.0%	26.9%
Good (4)	16.9%	14.0%	11.5%	15.0%
Fair (3)	5.6%	5.0%	4.2%	5.2%
Poor (2)	1.1%	1.6%	1.2%	1.3%
Unsatisfactory (1)	0.7%	1.0%	0.2%	0.8%
Mean	5.1	5.2	5.3	5.2
Median	5	6	6	6
Count	4105	5490	592	10187



5. How would you rate your professor's specific contribution to you learning in this course?

	Response by Course Level			
	Lower	Upper	Grad	Total
Excellent (6)	53.0%	56.8%	62.2%	55.6%
Very Good (5)	24.7%	23.3%	21.2%	23.7%
Good (4)	15.4%	12.3%	11.7%	13.5%
Fair (3)	5.1%	5.1%	3.6%	5.0%
Poor (2)	1.1%	1.6%	0.9%	1.4%
Unsatisfactory (1)	0.6%	1.0%	0.3%	0.8%
Mean	5.2	5.3	5.4	5.2
Median	6	6	6	6
Count	4080	5400	580	10060



Student Opinion of Teaching Effectiveness (SOTE)- College of University Studies Winter 2015 Term Summary

1. Rate your interest in the subject matter of this course before you took the class.

	Response by Course Level			
	Lower	Upper	Grad	Total
Very High (1)	24.6%	0.0%	0.0%	24.6%
High (2)	27.3%	0.0%	0.0%	27.3%
Moderately High (3)	19.1%	0.0%	0.0%	19.1%
Moderately Low (4)	9.2%	0.0%	0.0%	9.2%
Low (5)	14.4%	0.0%	0.0%	14.4%
Very Low (6)	5.5%	0.0%	0.0%	5.5%
Mean	2.8	N/A	N/A	2.8
Median	2	N/A	N/A	2
Count	403	0	0	403

2. How many class sessions did you attend?

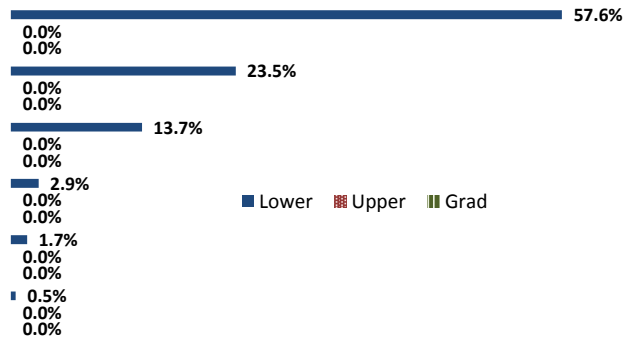
	Response by Course Level			
	Lower	Upper	Grad	Total
All (1)	46.9%	0.0%	0.0%	46.9%
Almost All (2)	49.6%	0.0%	0.0%	49.6%
More than Half (3)	3.3%	0.0%	0.0%	3.3%
Less than Half (4)	0.3%	0.0%	0.0%	0.3%
Mean	1.6	N/A	N/A	1.6
Median	2	N/A	N/A	2
Count	399	0	0	399

3. Why did you take this course? Choose all that apply.

	Response by Course Level			
	Lower	Upper	Grad	Total
3a. The course fulfills a general education requirement.	40.6%	0.0%	0.0%	40.6%
3b. The course fulfills a requirement in my major.	16.3%	0.0%	0.0%	16.3%
3c. I have enjoyed the professor's class(es) in the past.	3.0%	0.0%	0.0%	3.0%
3d. The course will improve job/career opportunities.	11.9%	0.0%	0.0%	11.9%
3e. The course sounded interesting to me.	15.9%	0.0%	0.0%	15.9%

4. How would you rate the overall quality of instruction in this course?

	Response by Course Level			
	Lower	Upper	Grad	Total
Excellent (6)	57.6%	0.0%	0.0%	57.6%
Very Good (5)	23.5%	0.0%	0.0%	23.5%
Good (4)	13.7%	0.0%	0.0%	13.7%
Fair (3)	2.9%	0.0%	0.0%	2.9%
Poor (2)	1.7%	0.0%	0.0%	1.7%
Unsatisfactory (1)	0.5%	0.0%	0.0%	0.5%
Mean	5.3	N/A	N/A	5.3
Median	6	N/A	N/A	6
Count	408	0	0	408



5. How would you rate your professor's specific contribution to you learning in this course?

	Response by Course Level			
	Lower	Upper	Grad	Total
Excellent (6)	65.7%	0.0%	0.0%	65.7%
Very Good (5)	17.3%	0.0%	0.0%	17.3%
Good (4)	11.4%	0.0%	0.0%	11.4%
Fair (3)	3.7%	0.0%	0.0%	3.7%
Poor (2)	1.7%	0.0%	0.0%	1.7%
Unsatisfactory (1)	0.2%	0.0%	0.0%	0.2%
Mean	5.4	N/A	N/A	5.4
Median	6	N/A	N/A	6
Count	405	0	0	405

