

California State University, San Bernardino

CSUSB ScholarWorks

Faculty Senate records

Arthur E. Nelson University Archives

7-8-2015

Student Opinion of Teaching Effectiveness (SOTE) - College of Arts & Letters Spring 2015 Term Summary

CSUSB Faculty Senate

Follow this and additional works at: <https://scholarworks.lib.csusb.edu/facultysenate>

Recommended Citation

CSUSB Faculty Senate, "Student Opinion of Teaching Effectiveness (SOTE) - College of Arts & Letters Spring 2015 Term Summary" (2015). *Faculty Senate records*. 214.
<https://scholarworks.lib.csusb.edu/facultysenate/214>

This Report is brought to you for free and open access by the Arthur E. Nelson University Archives at CSUSB ScholarWorks. It has been accepted for inclusion in Faculty Senate records by an authorized administrator of CSUSB ScholarWorks. For more information, please contact scholarworks@csusb.edu.

Student Opinion of Teaching Effectiveness (SOTE)- College of Arts & Letters Spring 2015 Term Summary

1. Rate your interest in the subject matter of this course before you took the class.

	Response by Course Level			
	Lower	Upper	Grad	Total
Very High (1)	27.2%	38.7%	55.9%	32.5%
High (2)	26.3%	24.9%	25.5%	25.7%
Moderately High (3)	21.8%	19.2%	9.7%	20.5%
Moderately Low (4)	9.2%	8.2%	5.5%	8.7%
Low (5)	10.2%	6.2%	2.1%	8.4%
Very Low (6)	5.3%	2.9%	1.4%	4.2%
Mean	2.7	2.3	1.8	2.5
Median	2	2	1	2
Count	4170	3086	145	7401

2. How many class sessions did you attend?

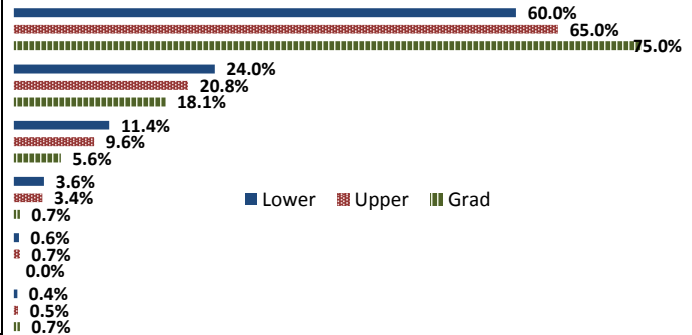
	Response by Course Level			
	Lower	Upper	Grad	Total
All (1)	50.5%	48.5%	42.4%	49.5%
Almost All (2)	45.7%	48.3%	54.2%	47.0%
More than Half (3)	3.5%	3.0%	2.8%	3.2%
Less than Half (4)	0.3%	0.2%	0.7%	0.3%
Mean	1.5	1.5	1.6	1.5
Median	1	2	2	2
Count	4130	3081	144	7355

3. Why did you take this course? Choose all that apply.

	Response by Course Level			
	Lower	Upper	Grad	Total
3a. The course fulfills a general education requirement.	70.3%	40.5%	31.6%	57.1%
3b. The course fulfills a requirement in my major.	22.8%	58.8%	78.9%	38.9%
3c. I have enjoyed the professor's class(es) in the past.	9.3%	16.6%	36.8%	12.9%
3d. The course will improve job/career opportunities.	16.3%	22.0%	36.2%	19.1%
3e. The course sounded interesting to me.	24.9%	35.6%	40.8%	29.6%

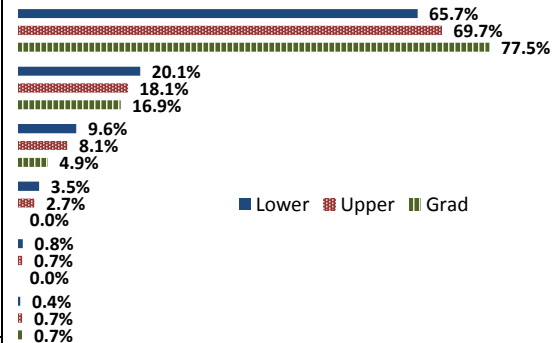
4. How would you rate the overall quality of instruction in this course?

	Response by Course Level			
	Lower	Upper	Grad	Total
Excellent (6)	60.0%	65.0%	75.0%	62.4%
Very Good (5)	24.0%	20.8%	18.1%	22.5%
Good (4)	11.4%	9.6%	5.6%	10.6%
Fair (3)	3.6%	3.4%	0.7%	3.5%
Poor (2)	0.6%	0.7%	0.0%	0.6%
Unsatisfactory (1)	0.4%	0.5%	0.7%	0.4%
Mean	5.4	5.4	5.7	5.4
Median	6	6	6	6
Count	4172	3113	144	7429



5. How would you rate your professor's specific contribution to you learning in this course?

	Response by Course Level			
	Lower	Upper	Grad	Total
Excellent (6)	65.7%	69.7%	77.5%	67.6%
Very Good (5)	20.1%	18.1%	16.9%	19.2%
Good (4)	9.6%	8.1%	4.9%	8.9%
Fair (3)	3.5%	2.7%	0.0%	3.1%
Poor (2)	0.8%	0.7%	0.0%	0.8%
Unsatisfactory (1)	0.4%	0.7%	0.7%	0.5%
Mean	5.5	5.5	5.7	5.5
Median	6	6	6	6
Count	4166	3120	142	7428



Student Opinion of Teaching Effectiveness (SOTE)- College of Business and Public Administration Spring 2015 Term Summary

1. Rate your interest in the subject matter of this course before you took the class.

	Response by Course Level			
	Lower	Upper	Grad	Total
Very High (1)	20.0%	30.6%	30.8%	28.6%
High (2)	26.0%	28.6%	29.6%	28.2%
Moderately High (3)	21.4%	21.9%	23.6%	22.0%
Moderately Low (4)	13.2%	9.6%	7.4%	10.0%
Low (5)	12.6%	6.8%	6.7%	7.9%
Very Low (6)	6.8%	2.4%	1.9%	3.2%
Mean	2.9	2.4	2.4	2.5
Median	3	2	2	2
Count	855	2956	581	4392

2. How many class sessions did you attend?

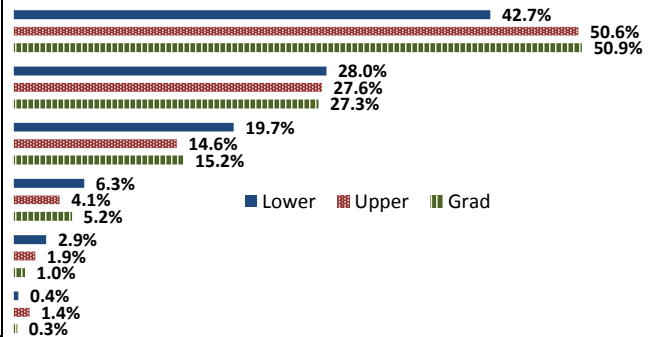
	Response by Course Level			
	Lower	Upper	Grad	Total
All (1)	56.3%	53.4%	72.0%	56.4%
Almost All (2)	39.4%	43.7%	23.9%	40.2%
More than Half (3)	3.5%	2.3%	2.4%	2.5%
Less than Half (4)	0.7%	0.7%	1.7%	0.8%
Mean	1.5	1.5	1.3	1.5
Median	1	1	1	1
Count	852	2921	574	4347

3. Why did you take this course? Choose all that apply.

	Response by Course Level			
	Lower	Upper	Grad	Total
3a. The course fulfills a general education requirement.	40.3%	26.7%	33.4%	30.3%
3b. The course fulfills a requirement in my major.	61.5%	75.6%	69.5%	72.0%
3c. I have enjoyed the professor's class(es) in the past.	1.3%	7.3%	6.6%	6.0%
3d. The course will improve job/career opportunities.	18.0%	26.8%	25.2%	24.9%
3e. The course sounded interesting to me.	13.9%	17.4%	17.2%	16.7%

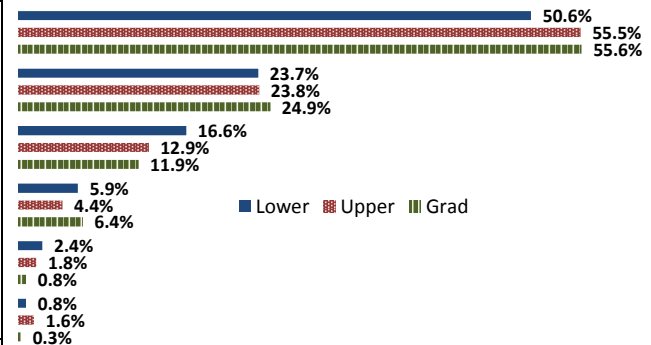
4. How would you rate the overall quality of instruction in this course?

	Response by Course Level			
	Lower	Upper	Grad	Total
Excellent (6)	42.7%	50.6%	50.9%	49.1%
Very Good (5)	28.0%	27.6%	27.3%	27.6%
Good (4)	19.7%	14.6%	15.2%	15.7%
Fair (3)	6.3%	4.1%	5.2%	4.6%
Poor (2)	2.9%	1.9%	1.0%	2.0%
Unsatisfactory (1)	0.4%	1.4%	0.3%	1.0%
Mean	5.0	5.2	5.2	5.1
Median	5	6	6	5
Count	854	2961	579	4394



5. How would you rate your professor's specific contribution to you learning in this course?

	Response by Course Level			
	Lower	Upper	Grad	Total
Excellent (6)	50.6%	55.5%	55.6%	54.6%
Very Good (5)	23.7%	23.8%	24.9%	23.9%
Good (4)	16.6%	12.9%	11.9%	13.5%
Fair (3)	5.9%	4.4%	6.4%	5.0%
Poor (2)	2.4%	1.8%	0.8%	1.8%
Unsatisfactory (1)	0.8%	1.6%	0.3%	1.3%
Mean	5.1	5.2	5.3	5.2
Median	6	6	6	6
Count	875	2965	590	4430



Student Opinion of Teaching Effectiveness (SOTE)- College of Education Spring 2015 Term Summary

1. Rate your interest in the subject matter of this course before you took the class.

	Response by Course Level			
	Lower	Upper	Grad	Total
Very High (1)	55.4%	35.5%	41.8%	40.9%
High (2)	28.9%	29.2%	29.1%	29.1%
Moderately High (3)	10.8%	21.5%	16.6%	17.6%
Moderately Low (4)	2.4%	7.2%	6.7%	6.5%
Low (5)	2.4%	4.1%	4.0%	4.0%
Very Low (6)	0.0%	2.5%	1.8%	1.9%
Mean	1.7	2.2	2.1	2.1
Median	1	2	2	2
Count	83	363	867	1313

2. How many class sessions did you attend?

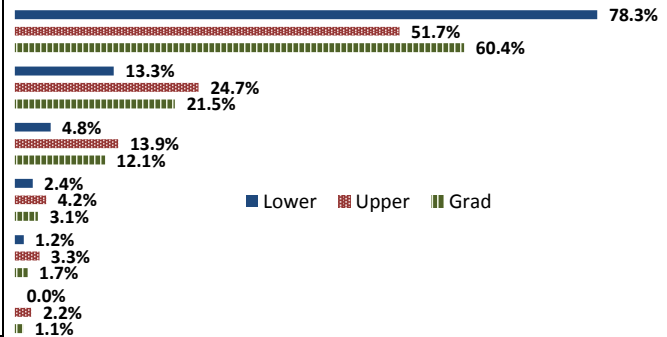
	Response by Course Level			
	Lower	Upper	Grad	Total
All (1)	50.0%	79.4%	77.4%	76.2%
Almost All (2)	48.8%	18.4%	22.0%	22.7%
More than Half (3)	1.2%	1.4%	0.5%	0.8%
Less than Half (4)	0.0%	0.8%	0.1%	0.3%
Mean	1.5	1.2	1.2	1.3
Median	2	1	1	1
Count	82	354	849	1285

3. Why did you take this course? Choose all that apply.

	Response by Course Level			
	Lower	Upper	Grad	Total
3a. The course fulfills a general education requirement.	38.4%	17.7%	23.0%	22.1%
3b. The course fulfills a requirement in my major.	30.2%	53.3%	81.1%	68.5%
3c. I have enjoyed the professor's class(es) in the past.	15.1%	8.2%	15.7%	13.0%
3d. The course will improve job/career opportunities.	22.1%	21.3%	31.4%	27.4%
3e. The course sounded interesting to me.	58.1%	12.4%	13.3%	15.5%

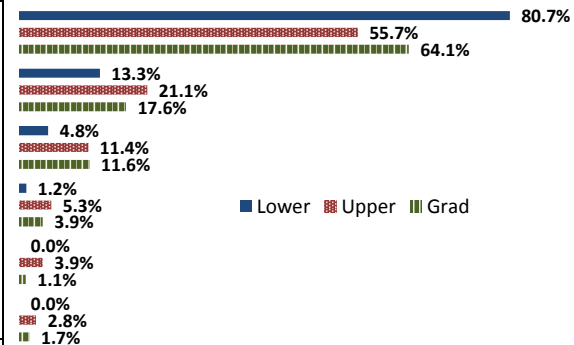
4. How would you rate the overall quality of instruction in this course?

	Response by Course Level			
	Lower	Upper	Grad	Total
Excellent (6)	78.3%	51.7%	60.4%	59.1%
Very Good (5)	13.3%	24.7%	21.5%	21.9%
Good (4)	4.8%	13.9%	12.1%	12.1%
Fair (3)	2.4%	4.2%	3.1%	3.3%
Poor (2)	1.2%	3.3%	1.7%	2.1%
Unsatisfactory (1)	0.0%	2.2%	1.1%	1.4%
Mean	5.7	5.1	5.3	5.3
Median	6	6	6	6
Count	83	360	874	1317



5. How would you rate your professor's specific contribution to you learning in this course?

	Response by Course Level			
	Lower	Upper	Grad	Total
Excellent (6)	80.7%	55.7%	64.1%	62.8%
Very Good (5)	13.3%	21.1%	17.6%	18.3%
Good (4)	4.8%	11.4%	11.6%	11.1%
Fair (3)	1.2%	5.3%	3.9%	4.1%
Poor (2)	0.0%	3.9%	1.1%	1.8%
Unsatisfactory (1)	0.0%	2.8%	1.7%	1.9%
Mean	5.7	5.1	5.3	5.3
Median	6	6	6	6
Count	83	361	871	1315



Student Opinion of Teaching Effectiveness (SOTE)- College of Natural Sciences Spring 2015 Term Summary

1. Rate your interest in the subject matter of this course before you took the class.

	Response by Course Level			
	Lower	Upper	Grad	Total
Very High (1)	26.6%	35.8%	41.7%	30.3%
High (2)	25.1%	27.7%	44.9%	26.3%
Moderately High (3)	21.3%	19.5%	5.5%	20.4%
Moderately Low (4)	10.1%	8.1%	3.9%	9.3%
Low (5)	10.7%	5.9%	3.1%	8.8%
Very Low (6)	6.3%	3.1%	0.8%	5.0%
Mean	2.7	2.3	1.8	2.5
Median	2	2	2	2
Count	5549	3511	127	9187

2. How many class sessions did you attend?

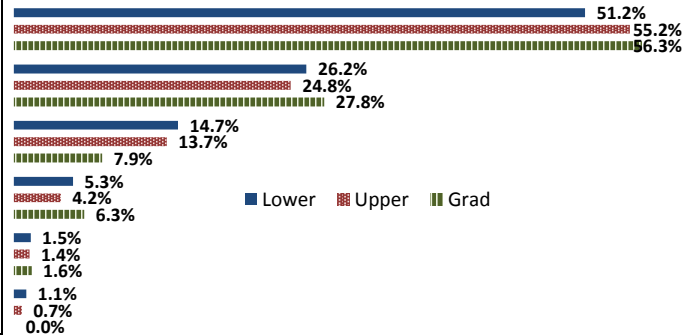
	Response by Course Level			
	Lower	Upper	Grad	Total
All (1)	62.8%	62.9%	69.4%	63.0%
Almost All (2)	34.1%	34.8%	28.9%	34.3%
More than Half (3)	2.3%	1.9%	1.7%	2.1%
Less than Half (4)	0.8%	0.4%	0.0%	0.6%
Mean	1.4	1.4	1.3	1.4
Median	1	1	1	1
Count	5510	3504	121	9135

3. Why did you take this course? Choose all that apply.

	Response by Course Level			
	Lower	Upper	Grad	Total
3a. The course fulfills a general education requirement.	49.7%	23.5%	25.8%	39.4%
3b. The course fulfills a requirement in my major.	45.6%	71.7%	73.5%	55.9%
3c. I have enjoyed the professor's class(es) in the past.	5.3%	13.9%	15.9%	8.7%
3d. The course will improve job/career opportunities.	11.0%	20.7%	32.6%	15.0%
3e. The course sounded interesting to me.	16.0%	19.7%	31.1%	17.6%

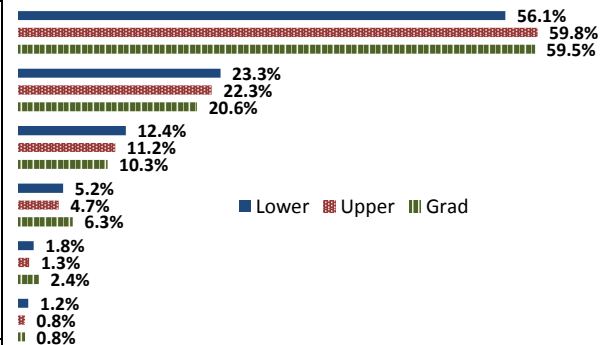
4. How would you rate the overall quality of instruction in this course?

	Response by Course Level			
	Lower	Upper	Grad	Total
Excellent (6)	51.2%	55.2%	56.3%	52.8%
Very Good (5)	26.2%	24.8%	27.8%	25.7%
Good (4)	14.7%	13.7%	7.9%	14.2%
Fair (3)	5.3%	4.2%	6.3%	4.9%
Poor (2)	1.5%	1.4%	1.6%	1.5%
Unsatisfactory (1)	1.1%	0.7%	0.0%	0.9%
Mean	5.2	5.3	5.3	5.2
Median	6	6	6	6
Count	5597	3499	126	9222



5. How would you rate your professor's specific contribution to you learning in this course?

	Response by Course Level			
	Lower	Upper	Grad	Total
Excellent (6)	56.1%	59.8%	59.5%	57.5%
Very Good (5)	23.3%	22.3%	20.6%	22.8%
Good (4)	12.4%	11.2%	10.3%	11.9%
Fair (3)	5.2%	4.7%	6.3%	5.0%
Poor (2)	1.8%	1.3%	2.4%	1.7%
Unsatisfactory (1)	1.2%	0.8%	0.8%	1.1%
Mean	5.2	5.3	5.3	5.3
Median	6	6	6	6
Count	5568	3537	126	9231



Student Opinion of Teaching Effectiveness (SOTE)- College of Social and Behavioral Sciences Spring 2015 Term Summary

1. Rate your interest in the subject matter of this course before you took the class.

	Response by Course Level			
	Lower	Upper	Grad	Total
Very High (1)	20.1%	33.0%	43.3%	28.7%
High (2)	25.3%	28.3%	26.9%	27.1%
Moderately High (3)	23.2%	19.6%	15.2%	20.7%
Moderately Low (4)	12.5%	7.2%	5.6%	9.1%
Low (5)	13.2%	7.9%	4.8%	9.7%
Very Low (6)	5.7%	3.9%	4.2%	4.6%
Mean	2.9	2.4	2.1	2.6
Median	3	2	2	2
Count	3470	5241	499	9210

2. How many class sessions did you attend?

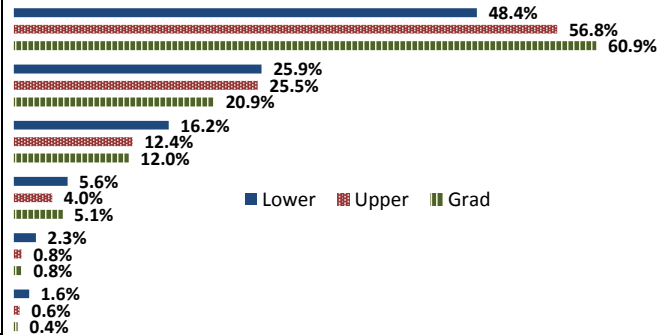
	Response by Course Level			
	Lower	Upper	Grad	Total
All (1)	49.2%	53.7%	66.9%	52.8%
Almost All (2)	43.7%	42.7%	30.5%	42.4%
More than Half (3)	3.8%	2.7%	2.4%	3.1%
Less than Half (4)	3.3%	0.9%	0.2%	1.8%
Mean	1.6	1.5	1.4	1.5
Median	2	1	1	1
Count	3479	5258	505	9242

3. Why did you take this course? Choose all that apply.

	Response by Course Level			
	Lower	Upper	Grad	Total
3a. The course fulfills a general education requirement.	67.4%	32.3%	30.4%	45.3%
3b. The course fulfills a requirement in my major.	29.8%	67.4%	70.9%	53.6%
3c. I have enjoyed the professor's class(es) in the past.	2.2%	14.3%	16.1%	9.8%
3d. The course will improve job/career opportunities.	10.2%	20.4%	26.9%	16.9%
3e. The course sounded interesting to me.	20.5%	34.5%	19.6%	28.4%

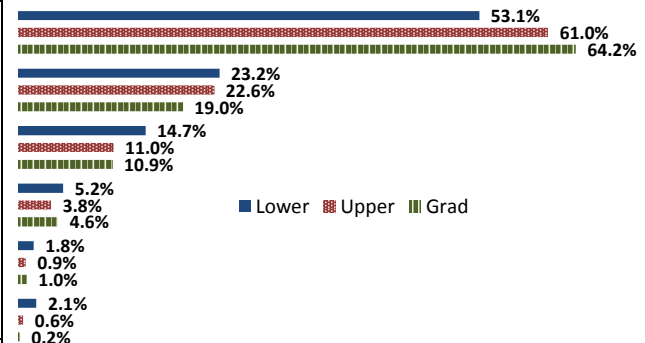
4. How would you rate the overall quality of instruction in this course?

	Response by Course Level			
	Lower	Upper	Grad	Total
Excellent (6)	48.4%	56.8%	60.9%	53.9%
Very Good (5)	25.9%	25.5%	20.9%	25.4%
Good (4)	16.2%	12.4%	12.0%	13.8%
Fair (3)	5.6%	4.0%	5.1%	4.7%
Poor (2)	2.3%	0.8%	0.8%	1.3%
Unsatisfactory (1)	1.6%	0.6%	0.4%	1.0%
Mean	5.1	2.3	5.3	5.2
Median	5	6	6	6
Count	3489	5283	493	9265



5. How would you rate your professor's specific contribution to you learning in this course?

	Response by Course Level			
	Lower	Upper	Grad	Total
Excellent (6)	53.1%	61.0%	64.2%	58.2%
Very Good (5)	23.2%	22.6%	19.0%	22.6%
Good (4)	14.7%	11.0%	10.9%	12.4%
Fair (3)	5.2%	3.8%	4.6%	4.4%
Poor (2)	1.8%	0.9%	1.0%	1.3%
Unsatisfactory (1)	2.1%	0.6%	0.2%	1.1%
Mean	5.1	5.4	5.4	5.3
Median	6	6	6	6
Count	3506	5268	495	9269



Student Opinion of Teaching Effectiveness (SOTE)- College of University Studies Spring 2015 Term Summary

1. Rate your interest in the subject matter of this course before you took the class.

	Response by Course Level			
	Lower	Upper	Grad	Total
Very High (1)	28.6%	0.0%	0.0%	28.6%
High (2)	27.0%	0.0%	0.0%	27.0%
Moderately High (3)	18.1%	0.0%	0.0%	18.1%
Moderately Low (4)	9.2%	0.0%	0.0%	9.2%
Low (5)	10.5%	0.0%	0.0%	10.5%
Very Low (6)	6.6%	0.0%	0.0%	6.6%
Mean	2.7	N/A	N/A	2.7
Median	2	N/A	N/A	2
Count	304	0	0	304

2. How many class sessions did you attend?

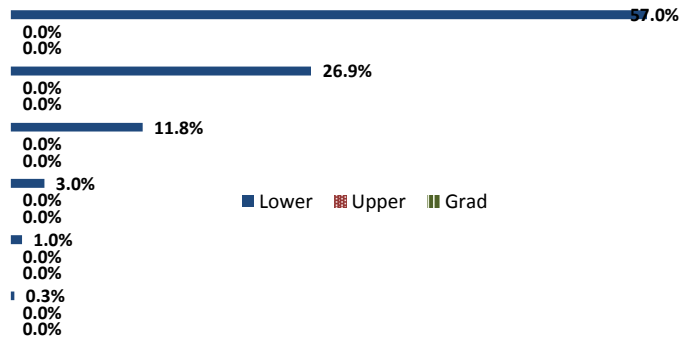
	Response by Course Level			
	Lower	Upper	Grad	Total
All (1)	45.7%	0.0%	0.0%	45.7%
Almost All (2)	51.6%	0.0%	0.0%	51.6%
More than Half (3)	2.6%	0.0%	0.0%	2.6%
Less than Half (4)	0.0%	0.0%	0.0%	0.0%
Mean	1.6	N/A	N/A	1.6
Median	2	N/A	N/A	2
Count	304	0	0	304

3. Why did you take this course? Choose all that apply.

	Response by Course Level			
	Lower	Upper	Grad	Total
3a. The course fulfills a general education requirement.	35.9%	0.0%	0.0%	35.9%
3b. The course fulfills a requirement in my major.	20.1%	0.0%	0.0%	20.1%
3c. I have enjoyed the professor's class(es) in the past.	3.3%	0.0%	0.0%	3.3%
3d. The course will improve job/career opportunities.	19.1%	0.0%	0.0%	19.1%
3e. The course sounded interesting to me.	17.9%	0.0%	0.0%	17.9%

4. How would you rate the overall quality of instruction in this course?

	Response by Course Level			
	Lower	Upper	Grad	Total
Excellent (6)	57.0%	0.0%	0.0%	57.0%
Very Good (5)	26.9%	0.0%	0.0%	26.9%
Good (4)	11.8%	0.0%	0.0%	11.8%
Fair (3)	3.0%	0.0%	0.0%	3.0%
Poor (2)	1.0%	0.0%	0.0%	1.0%
Unsatisfactory (1)	0.3%	0.0%	0.0%	0.3%
Mean	5.4	N/A	N/A	5.4
Median	6	N/A	N/A	6
Count	305	0	0	305



5. How would you rate your professor's specific contribution to you learning in this course?

	Response by Course Level			
	Lower	Upper	Grad	Total
Excellent (6)	64.2%	0.0%	0.0%	64.2%
Very Good (5)	20.9%	0.0%	0.0%	20.9%
Good (4)	11.6%	0.0%	0.0%	11.6%
Fair (3)	2.3%	0.0%	0.0%	2.3%
Poor (2)	0.3%	0.0%	0.0%	0.3%
Unsatisfactory (1)	0.7%	0.0%	0.0%	0.7%
Mean	5.4	N/A	N/A	5.4
Median	6	N/A	N/A	6
Count	302	0	0	302

