

California State University, San Bernardino

CSUSB ScholarWorks

Faculty Senate records

Arthur E. Nelson University Archives

7-26-2016

Student Opinion of Teaching Effectiveness (SOTE) - College of Arts & Letters Spring 2016 Term Summary

CSUSB Faculty Senate

Follow this and additional works at: <https://scholarworks.lib.csusb.edu/facultysenate>

Recommended Citation

CSUSB Faculty Senate, "Student Opinion of Teaching Effectiveness (SOTE) - College of Arts & Letters Spring 2016 Term Summary" (2016). *Faculty Senate records*. 213.
<https://scholarworks.lib.csusb.edu/facultysenate/213>

This Report is brought to you for free and open access by the Arthur E. Nelson University Archives at CSUSB ScholarWorks. It has been accepted for inclusion in Faculty Senate records by an authorized administrator of CSUSB ScholarWorks. For more information, please contact scholarworks@csusb.edu.

Student Opinion of Teaching Effectiveness (SOTE)- College of Arts & Letters Spring 2016 Term Summary

1. Rate your interest in the subject matter of this course before you took the class.

	Response by Course Level			
	Lower	Upper	Grad	Total
Very High (1)	27.0%	42.2%	67.0%	33.7%
High (2)	24.5%	25.4%	20.9%	24.8%
Moderately High (3)	21.4%	17.4%	8.7%	19.6%
Moderately Low (4)	10.6%	7.0%	1.7%	9.0%
Low (5)	11.6%	5.2%	1.7%	8.9%
Very Low (6)	4.9%	2.9%	0.0%	4.0%
Mean	2.7	2.2	1.5	2.5
Median	2	2	1	2
Count	4196	2875	115	7186

2. How many class sessions did you attend?

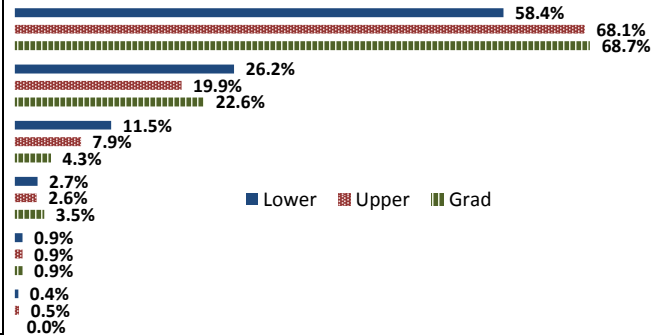
	Response by Course Level			
	Lower	Upper	Grad	Total
All (1)	44.6%	44.6%	64.0%	44.9%
Almost All (2)	50.3%	52.2%	34.2%	50.8%
More than Half (3)	4.3%	2.7%	1.8%	3.6%
Less than Half (4)	0.8%	0.5%	0.0%	0.6%
Mean	1.6	1.6	1.4	1.6
Median	2	2	1	2
Count	4197	2848	111	7156

3. Why did you take this course? Choose all that apply.

	Response by Course Level			
	Lower	Upper	Grad	Total
3a. The course fulfills a general education requirement.	70.0%	37.7%	30.4%	56.6%
3b. The course fulfills a requirement in my major.	22.0%	60.3%	72.0%	38.0%
3c. I have enjoyed the professor's class(es) in the past.	8.2%	18.2%	38.4%	12.7%
3d. The course will improve job/career opportunities.	16.0%	23.5%	30.4%	19.2%
3e. The course sounded interesting to me.	23.3%	38.0%	44.8%	29.5%

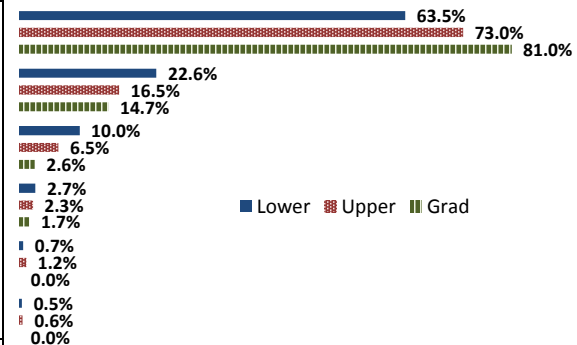
4. How would you rate the overall quality of instruction in this course?

	Response by Course Level			
	Lower	Upper	Grad	Total
Excellent (6)	58.4%	68.1%	68.7%	62.4%
Very Good (5)	26.2%	19.9%	22.6%	23.6%
Good (4)	11.5%	7.9%	4.3%	10.0%
Fair (3)	2.7%	2.6%	3.5%	2.7%
Poor (2)	0.9%	0.9%	0.9%	0.9%
Unsatisfactory (1)	0.4%	0.5%	0.0%	0.4%
Mean	5.4	5.5	5.5	5.4
Median	6	6	6	6
Count	4229	2866	115	7210



5. How would you rate your professor's specific contribution to you learning in this course?

	Response by Course Level			
	Lower	Upper	Grad	Total
Excellent (6)	63.5%	73.0%	81.0%	67.6%
Very Good (5)	22.6%	16.5%	14.7%	20.0%
Good (4)	10.0%	6.5%	2.6%	8.5%
Fair (3)	2.7%	2.3%	1.7%	2.5%
Poor (2)	0.7%	1.2%	0.0%	0.9%
Unsatisfactory (1)	0.5%	0.6%	0.0%	0.5%
Mean	5.4	5.6	5.8	5.5
Median	6	6	6	6
Count	4213	2863	116	7192



Student Opinion of Teaching Effectiveness (SOTE)- College of Business and Public Administration Spring 2016 Term Summary

1. Rate your interest in the subject matter of this course before you took the class.

	Response by Course Level			
	Lower	Upper	Grad	Total
Very High (1)	28.2%	32.3%	34.8%	31.7%
High (2)	24.8%	30.2%	27.0%	28.8%
Moderately High (3)	22.1%	20.5%	21.9%	21.0%
Moderately Low (4)	8.1%	7.8%	7.5%	7.8%
Low (5)	11.7%	6.3%	6.0%	7.4%
Very Low (6)	5.1%	2.9%	2.8%	3.4%
Mean	2.7	2.3	2.3	2.4
Median	2	2	2	2
Count	766	2579	319	3664

2. How many class sessions did you attend?

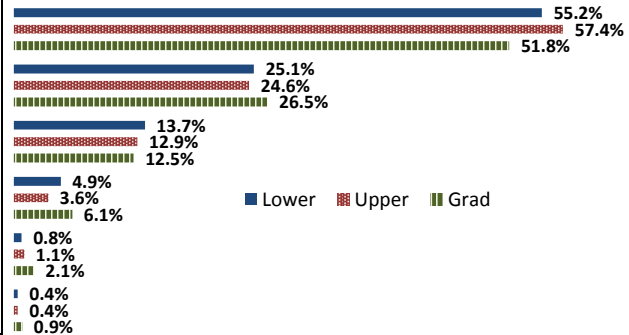
	Response by Course Level			
	Lower	Upper	Grad	Total
All (1)	62.4%	55.8%	59.1%	57.5%
Almost All (2)	34.6%	41.6%	38.1%	39.8%
More than Half (3)	2.4%	2.2%	2.1%	2.2%
Less than Half (4)	0.7%	0.4%	0.6%	0.5%
Mean	1.4	1.5	1.4	1.5
Median	1	1	1	1
Count	757	2572	328	3657

3. Why did you take this course? Choose all that apply.

	Response by Course Level			
	Lower	Upper	Grad	Total
3a. The course fulfills a general education requirement.	44.8%	25.6%	38.7%	30.7%
3b. The course fulfills a requirement in my major.	62.6%	79.7%	65.3%	74.9%
3c. I have enjoyed the professor's class(es) in the past.	6.4%	8.8%	9.5%	8.4%
3d. The course will improve job/career opportunities.	20.6%	26.0%	25.4%	24.8%
3e. The course sounded interesting to me.	17.8%	15.3%	16.5%	15.9%

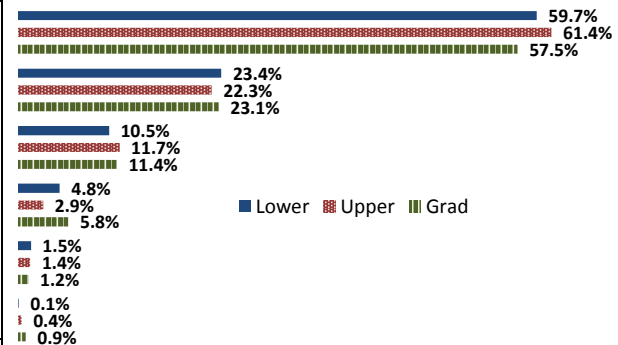
4. How would you rate the overall quality of instruction in this course?

	Response by Course Level			
	Lower	Upper	Grad	Total
Excellent (6)	55.2%	57.4%	51.8%	56.5%
Very Good (5)	25.1%	24.6%	26.5%	24.9%
Good (4)	13.7%	12.9%	12.5%	13.0%
Fair (3)	4.9%	3.6%	6.1%	4.1%
Poor (2)	0.8%	1.1%	2.1%	1.1%
Unsatisfactory (1)	0.4%	0.4%	0.9%	0.5%
Mean	5.3	5.3	5.2	5.3
Median	6	6	6	6
Count	776	2582	328	3686



5. How would you rate your professor's specific contribution to you learning in this course?

	Response by Course Level			
	Lower	Upper	Grad	Total
Excellent (6)	59.7%	61.4%	57.5%	60.7%
Very Good (5)	23.4%	22.3%	23.1%	22.6%
Good (4)	10.5%	11.7%	11.4%	11.4%
Fair (3)	4.8%	2.9%	5.8%	3.6%
Poor (2)	1.5%	1.4%	1.2%	1.4%
Unsatisfactory (1)	0.1%	0.4%	0.9%	0.4%
Mean	5.3	5.4	5.3	5.4
Median	6	6	6	6
Count	755	2575	325	3655



Student Opinion of Teaching Effectiveness (SOTE)- College of Education Spring 2016 Term Summary

1. Rate your interest in the subject matter of this course before you took the class.

	Response by Course Level			
	Lower	Upper	Grad	Total
Very High (1)	0.0%	0.0%	47.9%	47.9%
High (2)	0.0%	0.0%	27.1%	27.1%
Moderately High (3)	0.0%	0.0%	13.2%	13.2%
Moderately Low (4)	0.0%	0.0%	7.6%	7.6%
Low (5)	0.0%	0.0%	3.6%	3.6%
Very Low (6)	0.0%	0.0%	0.6%	0.6%
Mean	N/A	N/A	1.9	1.9
Median	N/A	N/A	2	2
Count	0	0	501	501

2. How many class sessions did you attend?

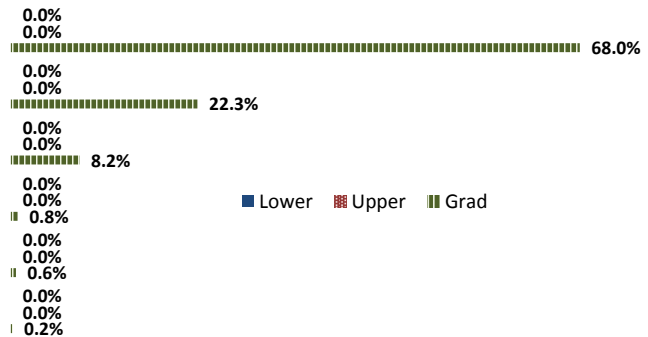
	Response by Course Level			
	Lower	Upper	Grad	Total
All (1)	0.0%	0.0%	67.8%	67.8%
Almost All (2)	0.0%	0.0%	30.7%	30.7%
More than Half (3)	0.0%	0.0%	0.8%	0.8%
Less than Half (4)	0.0%	0.0%	0.6%	0.6%
Mean	N/A	N/A	1.3	1.3
Median	N/A	N/A	1	1
Count	0	0	488	488

3. Why did you take this course? Choose all that apply.

	Response by Course Level			
	Lower	Upper	Grad	Total
3a. The course fulfills a general education requirement.	0.0%	0.0%	30.3%	30.3%
3b. The course fulfills a requirement in my major.	0.0%	0.0%	80.8%	80.8%
3c. I have enjoyed the professor's class(es) in the past.	0.0%	0.0%	16.7%	16.7%
3d. The course will improve job/career opportunities.	0.0%	0.0%	29.2%	29.2%
3e. The course sounded interesting to me.	0.0%	0.0%	13.1%	13.1%

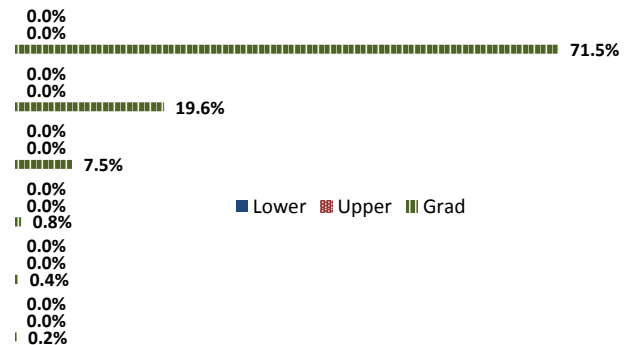
4. How would you rate the overall quality of instruction in this course?

	Response by Course Level			
	Lower	Upper	Grad	Total
Excellent (6)	0.0%	0.0%	68.0%	68.0%
Very Good (5)	0.0%	0.0%	22.3%	22.3%
Good (4)	0.0%	0.0%	8.2%	8.2%
Fair (3)	0.0%	0.0%	0.8%	0.8%
Poor (2)	0.0%	0.0%	0.6%	0.6%
Unsatisfactory (1)	0.0%	0.0%	0.2%	0.2%
Mean	N/A	N/A	5.6	5.6
Median	N/A	N/A	6	6
Count	0	0	503	503



5. How would you rate your professor's specific contribution to you learning in this course?

	Response by Course Level			
	Lower	Upper	Grad	Total
Excellent (6)	0.0%	0.0%	71.5%	71.5%
Very Good (5)	0.0%	0.0%	19.6%	19.6%
Good (4)	0.0%	0.0%	7.5%	7.5%
Fair (3)	0.0%	0.0%	0.8%	0.8%
Poor (2)	0.0%	0.0%	0.4%	0.4%
Unsatisfactory (1)	0.0%	0.0%	0.2%	0.2%
Mean	N/A	N/A	5.6	5.6
Median	N/A	N/A	6	6
Count	0	0	491	491



Student Opinion of Teaching Effectiveness (SOTE)- College of Natural Sciences Spring 2016 Term Summary

1. Rate your interest in the subject matter of this course before you took the class.

	Response by Course Level			
	Lower	Upper	Grad	Total
Very High (1)	24.5%	33.7%	47.4%	28.2%
High (2)	25.6%	28.1%	28.1%	26.6%
Moderately High (3)	21.0%	19.5%	12.3%	20.4%
Moderately Low (4)	10.6%	8.6%	7.9%	9.8%
Low (5)	11.1%	6.7%	4.4%	9.4%
Very Low (6)	7.1%	3.4%	0.0%	5.6%
Mean	2.8	2.4	1.9	2.6
Median	2	2	2	2
Count	6328	3873	114	10315

2. How many class sessions did you attend?

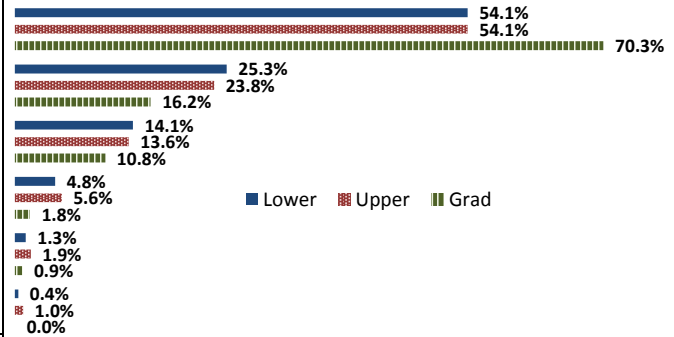
	Response by Course Level			
	Lower	Upper	Grad	Total
All (1)	61.8%	62.1%	62.7%	61.9%
Almost All (2)	35.1%	35.5%	32.7%	35.3%
More than Half (3)	2.3%	1.9%	3.6%	2.2%
Less than Half (4)	0.7%	0.4%	0.9%	0.6%
Mean	1.4	1.4	1.4	1.4
Median	1	1	1	1
Count	6323	3854	110	10287

3. Why did you take this course? Choose all that apply.

	Response by Course Level			
	Lower	Upper	Grad	Total
3a. The course fulfills a general education requirement.	53.0%	23.3%	23.0%	41.6%
3b. The course fulfills a requirement in my major.	48.2%	78.5%	62.3%	59.7%
3c. I have enjoyed the professor's class(es) in the past.	6.0%	14.2%	13.1%	9.1%
3d. The course will improve job/career opportunities.	11.8%	21.4%	18.9%	15.4%
3e. The course sounded interesting to me.	16.0%	19.4%	19.7%	17.3%

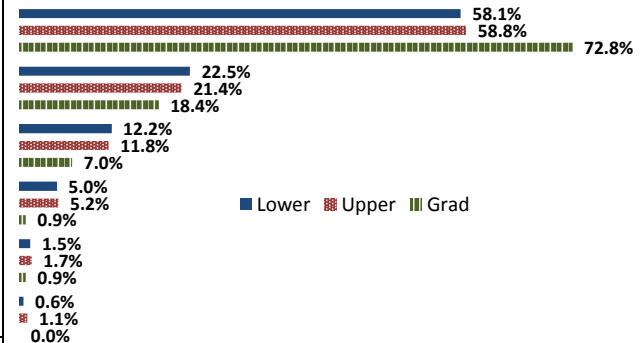
4. How would you rate the overall quality of instruction in this course?

	Response by Course Level			
	Lower	Upper	Grad	Total
Excellent (6)	54.1%	54.1%	70.3%	54.3%
Very Good (5)	25.3%	23.8%	16.2%	24.7%
Good (4)	14.1%	13.6%	10.8%	13.9%
Fair (3)	4.8%	5.6%	1.8%	5.1%
Poor (2)	1.3%	1.9%	0.9%	1.5%
Unsatisfactory (1)	0.4%	1.0%	0.0%	0.6%
Mean	5.2	5.2	5.5	5.2
Median	6	6	6	6
Count	6363	3881	111	10355



5. How would you rate your professor's specific contribution to you learning in this course?

	Response by Course Level			
	Lower	Upper	Grad	Total
Excellent (6)	58.1%	58.8%	72.8%	58.6%
Very Good (5)	22.5%	21.4%	18.4%	22.0%
Good (4)	12.2%	11.8%	7.0%	12.0%
Fair (3)	5.0%	5.2%	0.9%	5.1%
Poor (2)	1.5%	1.7%	0.9%	1.6%
Unsatisfactory (1)	0.6%	1.1%	0.0%	0.8%
Mean	5.3	5.3	5.6	5.3
Median	6	6	6	6
Count	6353	3883	114	10350



Student Opinion of Teaching Effectiveness (SOTE)- College of Social and Behavioral Sciences Spring 2016 Term Summary

1. Rate your interest in the subject matter of this course before you took the class.

	Response by Course Level			
	Lower	Upper	Grad	Total
Very High (1)	18.8%	32.6%	45.7%	28.5%
High (2)	27.1%	26.1%	25.4%	26.4%
Moderately High (3)	23.9%	19.2%	15.1%	20.6%
Moderately Low (4)	11.8%	9.2%	5.7%	9.9%
Low (5)	12.9%	8.6%	6.1%	10.0%
Very Low (6)	5.5%	4.4%	2.0%	4.6%
Mean	2.9	2.5	2.1	2.6
Median	3	2	2	2
Count	2590	4215	457	7262

2. How many class sessions did you attend?

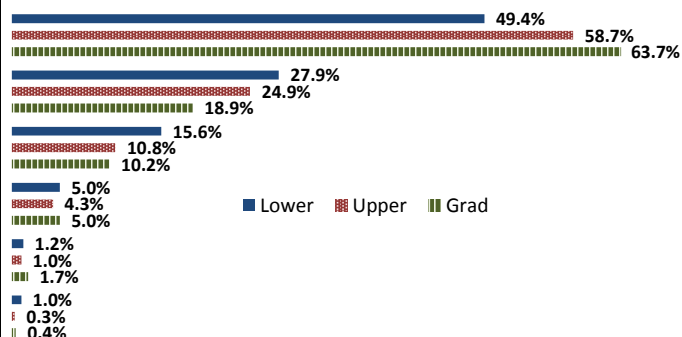
	Response by Course Level			
	Lower	Upper	Grad	Total
All (1)	49.3%	50.6%	60.0%	50.7%
Almost All (2)	45.1%	45.8%	38.9%	45.1%
More than Half (3)	4.6%	3.0%	0.9%	3.5%
Less than Half (4)	1.0%	0.5%	0.2%	0.7%
Mean	1.6	1.5	1.4	1.5
Median	2	1	1	1
Count	2584	4211	453	7248

3. Why did you take this course? Choose all that apply.

	Response by Course Level			
	Lower	Upper	Grad	Total
3a. The course fulfills a general education requirement.	75.0%	38.2%	26.5%	50.5%
3b. The course fulfills a requirement in my major.	27.9%	66.0%	72.4%	52.9%
3c. I have enjoyed the professor's class(es) in the past.	3.6%	12.8%	17.3%	9.8%
3d. The course will improve job/career opportunities.	9.2%	19.0%	26.9%	16.1%
3e. The course sounded interesting to me.	19.1%	32.5%	16.0%	26.6%

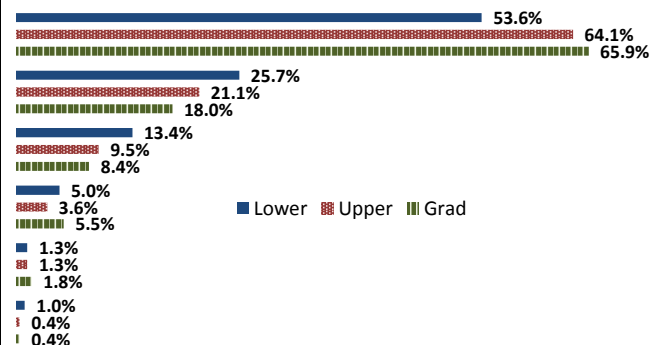
4. How would you rate the overall quality of instruction in this course?

	Response by Course Level			
	Lower	Upper	Grad	Total
Excellent (6)	49.4%	58.7%	63.7%	55.7%
Very Good (5)	27.9%	24.9%	18.9%	25.6%
Good (4)	15.6%	10.8%	10.2%	12.5%
Fair (3)	5.0%	4.3%	5.0%	4.6%
Poor (2)	1.2%	1.0%	1.7%	1.1%
Unsatisfactory (1)	1.0%	0.3%	0.4%	0.6%
Mean	5.2	5.4	5.4	5.3
Median	5	6	6	6
Count	2598	4203	460	7261



5. How would you rate your professor's specific contribution to you learning in this course?

	Response by Course Level			
	Lower	Upper	Grad	Total
Excellent (6)	53.6%	64.1%	65.9%	60.4%
Very Good (5)	25.7%	21.1%	18.0%	22.6%
Good (4)	13.4%	9.5%	8.4%	10.8%
Fair (3)	5.0%	3.6%	5.5%	4.2%
Poor (2)	1.3%	1.3%	1.8%	1.3%
Unsatisfactory (1)	1.0%	0.4%	0.4%	0.6%
Mean	5.2	5.4	5.4	5.3
Median	6	6	6	6
Count	2592	4203	451	7246



Student Opinion of Teaching Effectiveness (SOTE)- College of University Studies Spring 2016 Term Summary

1. Rate your interest in the subject matter of this course before you took the class.

	Response by Course Level			
	Lower	Upper	Grad	Total
Very High (1)	29.6%	0.0%	0.0%	29.6%
High (2)	21.8%	0.0%	0.0%	21.8%
Moderately High (3)	19.7%	0.0%	0.0%	19.7%
Moderately Low (4)	13.4%	0.0%	0.0%	13.4%
Low (5)	9.9%	0.0%	0.0%	9.9%
Very Low (6)	5.6%	0.0%	0.0%	5.6%
Mean	2.7	N/A	N/A	2.7
Median	2	N/A	N/A	2
Count	142	0	0	142

2. How many class sessions did you attend?

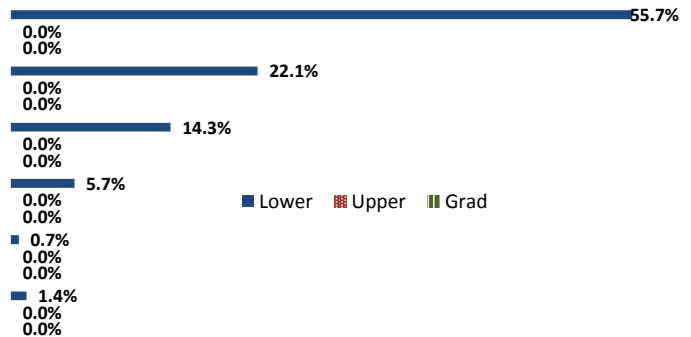
	Response by Course Level			
	Lower	Upper	Grad	Total
All (1)	45.9%	0.0%	0.0%	45.9%
Almost All (2)	48.1%	0.0%	0.0%	48.1%
More than Half (3)	5.2%	0.0%	0.0%	5.2%
Less than Half (4)	0.7%	0.0%	0.0%	0.7%
Mean	1.6	N/A	N/A	1.6
Median	2	N/A	N/A	2
Count	135	0	0	135

3. Why did you take this course? Choose all that apply.

	Response by Course Level			
	Lower	Upper	Grad	Total
3a. The course fulfills a general education requirement.	46.7%	0.0%	0.0%	46.7%
3b. The course fulfills a requirement in my major.	17.8%	0.0%	0.0%	17.8%
3c. I have enjoyed the professor's class(es) in the past.	2.0%	0.0%	0.0%	2.0%
3d. The course will improve job/career opportunities.	17.8%	0.0%	0.0%	17.8%
3e. The course sounded interesting to me.	21.1%	0.0%	0.0%	21.1%

4. How would you rate the overall quality of instruction in this course?

	Response by Course Level			
	Lower	Upper	Grad	Total
Excellent (6)	55.7%	0.0%	0.0%	55.7%
Very Good (5)	22.1%	0.0%	0.0%	22.1%
Good (4)	14.3%	0.0%	0.0%	14.3%
Fair (3)	5.7%	0.0%	0.0%	5.7%
Poor (2)	0.7%	0.0%	0.0%	0.7%
Unsatisfactory (1)	1.4%	0.0%	0.0%	1.4%
Mean	5.2	N/A	N/A	5.2
Median	6	N/A	N/A	6
Count	140	0	0	140



5. How would you rate your professor's specific contribution to you learning in this course?

	Response by Course Level			
	Lower	Upper	Grad	Total
Excellent (6)	58.9%	0.0%	0.0%	58.9%
Very Good (5)	18.4%	0.0%	0.0%	18.4%
Good (4)	11.3%	0.0%	0.0%	11.3%
Fair (3)	7.8%	0.0%	0.0%	7.8%
Poor (2)	2.1%	0.0%	0.0%	2.1%
Unsatisfactory (1)	0.5%	0.0%	0.0%	0.5%
Mean	5.2	N/A	N/A	5.2
Median	6	N/A	N/A	6
Count	141	0	0	141

