

California State University, San Bernardino

**CSUSB ScholarWorks**

---

Faculty Senate records

Arthur E. Nelson University Archives

---

6-26-2017

## **Student Opinion of Teaching Effectiveness (SOTE) - College of Arts & Letters Spring 2017 Term Summary**

CSUSB Faculty Senate

Follow this and additional works at: <https://scholarworks.lib.csusb.edu/facultysenate>

---

### **Recommended Citation**

CSUSB Faculty Senate, "Student Opinion of Teaching Effectiveness (SOTE) - College of Arts & Letters Spring 2017 Term Summary" (2017). *Faculty Senate records*. 212.  
<https://scholarworks.lib.csusb.edu/facultysenate/212>

This Report is brought to you for free and open access by the Arthur E. Nelson University Archives at CSUSB ScholarWorks. It has been accepted for inclusion in Faculty Senate records by an authorized administrator of CSUSB ScholarWorks. For more information, please contact [scholarworks@csusb.edu](mailto:scholarworks@csusb.edu).

## Student Opinion of Teaching Effectiveness (SOTE)- College of Arts & Letters Spring 2017 Term Summary

### 1. Rate your interest in the subject matter of this course before you took the class.

	Response by Course Level			
	Lower	Upper	Grad	Total
Very High (1)	26.1%	38.1%	55.1%	31.9%
High (2)	24.6%	24.8%	16.7%	24.6%
Moderately High (3)	21.9%	18.7%	19.2%	20.4%
Moderately Low (4)	10.5%	9.7%	5.1%	10.1%
Low (5)	11.7%	5.4%	3.9%	8.7%
Very Low (6)	5.3%	3.4%	0.0%	4.3%
Mean	2.7	2.3	1.9	2.5
Median	2	2	1	2
Count	3832	3296	78	7206

### 2. How many class sessions did you attend?

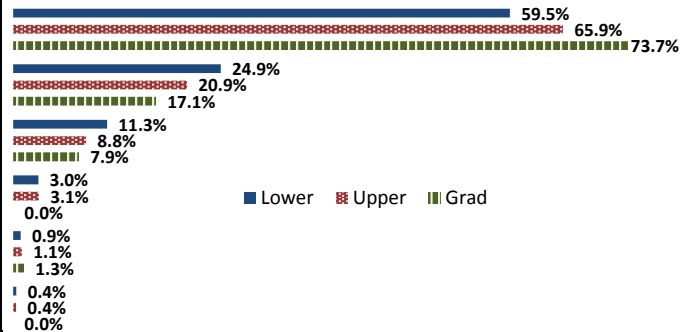
	Response by Course Level			
	Lower	Upper	Grad	Total
All (1)	47.3%	45.8%	32.9%	46.4%
Almost All (2)	48.5%	50.1%	65.8%	49.4%
More than Half (3)	3.7%	3.8%	1.4%	3.7%
Less than Half (4)	0.6%	0.4%	0.0%	0.5%
Mean	1.6	1.6	1.7	1.6
Median	2	2	2	2
Count	3816	3286	73	7175

### 3. Why did you take this course? Choose all that apply.

	Response by Course Level			
	Lower	Upper	Grad	Total
3a. The course fulfills a general education requirement.	70.9%	43.1%	23.8%	57.8%
3b. The course fulfills a requirement in my major.	20.9%	57.5%	82.5%	38.1%
3c. I have enjoyed the professor's class(es) in the past.	6.8%	15.9%	32.5%	11.2%
3d. The course will improve job/career opportunities.	13.4%	20.8%	31.3%	17.0%
3e. The course sounded interesting to me.	26.2%	34.3%	37.5%	30.0%

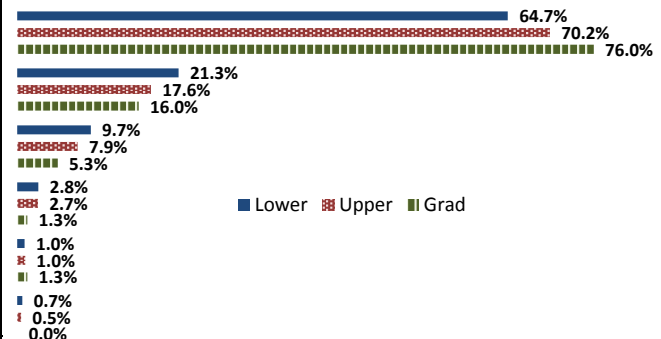
### 4. How would you rate the overall quality of instruction in this course?

	Response by Course Level			
	Lower	Upper	Grad	Total
Excellent (6)	59.5%	65.9%	73.7%	62.6%
Very Good (5)	24.9%	20.9%	17.1%	23.0%
Good (4)	11.3%	8.8%	7.9%	10.1%
Fair (3)	3.0%	3.1%	0.0%	3.0%
Poor (2)	0.9%	1.1%	1.3%	1.0%
Unsatisfactory (1)	0.4%	0.4%	0.0%	0.4%
Mean	5.4	5.5	5.6	5.4
Median	6	6	6	6
Count	3826	3304	76	7206



### 5. How would you rate your professor's specific contribution to you learning in this course?

	Response by Course Level			
	Lower	Upper	Grad	Total
Excellent (6)	64.7%	70.2%	76.0%	67.3%
Very Good (5)	21.3%	17.6%	16.0%	19.5%
Good (4)	9.7%	7.9%	5.3%	8.8%
Fair (3)	2.8%	2.7%	1.3%	2.7%
Poor (2)	1.0%	1.0%	1.3%	1.0%
Unsatisfactory (1)	0.7%	0.5%	0.0%	0.6%
Mean	5.4	5.5	5.6	5.5
Median	6	6	6	6
Count	3817	3287	75	7179



# Student Opinion of Teaching Effectiveness (SOTE)- College of Business and Public Administration Spring 2017 Term Summary

## 1. Rate your interest in the subject matter of this course before you took the class.

	Response by Course Level			
	Lower	Upper	Grad	Total
Very High (1)	22.1%	33.1%	31.6%	30.8%
High (2)	26.7%	30.1%	30.4%	29.4%
Moderately High (3)	21.9%	18.8%	17.9%	19.4%
Moderately Low (4)	11.6%	8.6%	9.1%	9.2%
Low (5)	10.6%	7.2%	7.6%	7.9%
Very Low (6)	7.2%	2.3%	3.4%	3.3%
Mean	2.8	2.3	2.4	2.4
Median	3	2	2	2
Count	805	2977	263	4045

## 2. How many class sessions did you attend?

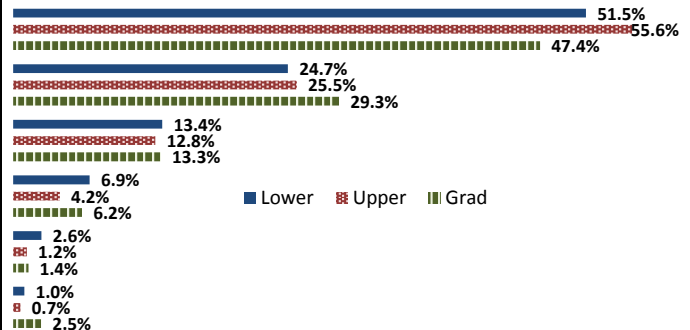
	Response by Course Level			
	Lower	Upper	Grad	Total
All (1)	57.0%	56.3%	63.0%	57.1%
Almost All (2)	38.6%	40.7%	32.9%	39.5%
More than Half (3)	3.4%	2.7%	3.2%	2.9%
Less than Half (4)	1.0%	0.3%	0.9%	0.5%
Mean	1.5	1.5	1.4	1.5
Median	1	1	1	1
Count	886	3123	435	4444

## 3. Why did you take this course? Choose all that apply.

	Response by Course Level			
	Lower	Upper	Grad	Total
3a. The course fulfills a general education requirement.	39.0%	25.3%	35.3%	28.9%
3b. The course fulfills a requirement in my major.	62.7%	76.3%	74.4%	73.4%
3c. I have enjoyed the professor's class(es) in the past.	3.8%	7.2%	12.8%	7.1%
3d. The course will improve job/career opportunities.	19.1%	24.3%	32.7%	24.1%
3e. The course sounded interesting to me.	14.8%	15.2%	19.7%	15.5%

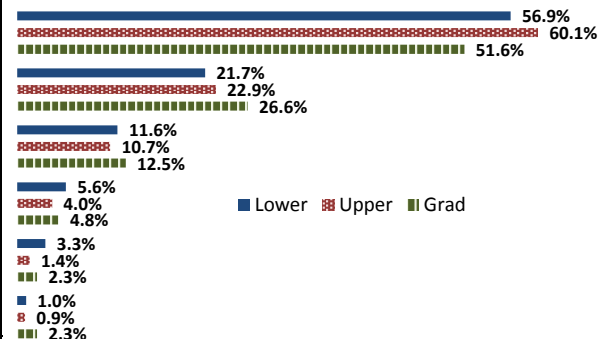
## 4. How would you rate the overall quality of instruction in this course?

	Response by Course Level			
	Lower	Upper	Grad	Total
Excellent (6)	51.5%	55.6%	47.4%	54.0%
Very Good (5)	24.7%	25.5%	29.3%	25.7%
Good (4)	13.4%	12.8%	13.3%	13.0%
Fair (3)	6.9%	4.2%	6.2%	4.9%
Poor (2)	2.6%	1.2%	1.4%	1.5%
Unsatisfactory (1)	1.0%	0.7%	2.5%	0.9%
Mean	5.1	5.3	5.1	5.2
Median	6	6	5	6
Count	903	3176	437	4516



## 5. How would you rate your professor's specific contribution to you learning in this course?

	Response by Course Level			
	Lower	Upper	Grad	Total
Excellent (6)	56.9%	60.1%	51.6%	58.6%
Very Good (5)	21.7%	22.9%	26.6%	23.0%
Good (4)	11.6%	10.7%	12.5%	11.1%
Fair (3)	5.6%	4.0%	4.8%	4.4%
Poor (2)	3.3%	1.4%	2.3%	1.9%
Unsatisfactory (1)	1.0%	0.9%	2.3%	1.1%
Mean	5.2	5.3	5.1	5.3
Median	6	6	6	6
Count	891	3157	440	4488



## Student Opinion of Teaching Effectiveness (SOTE)- College of Education Spring 2017 Term Summary

### 1. Rate your interest in the subject matter of this course before you took the class.

	Response by Course Level			
	Lower	Upper	Grad	Total
Very High (1)	48.7%	34.9%	48.8%	43.5%
High (2)	35.1%	27.3%	26.3%	27.0%
Moderately High (3)	5.4%	17.7%	14.0%	15.1%
Moderately Low (4)	2.7%	10.2%	5.5%	7.1%
Low (5)	5.4%	7.0%	3.2%	4.7%
Very Low (6)	2.7%	2.9%	2.3%	2.5%
Mean	1.9	2.4	1.9	2.1
Median	2	2	2	2
Count	37	344	529	910

### 2. How many class sessions did you attend?

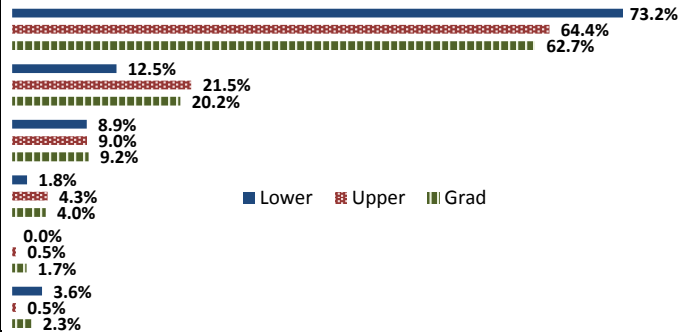
	Response by Course Level			
	Lower	Upper	Grad	Total
All (1)	63.0%	71.1%	73.9%	72.4%
Almost All (2)	35.2%	27.7%	25.4%	26.7%
More than Half (3)	1.9%	1.0%	0.1%	0.5%
Less than Half (4)	0.0%	0.2%	0.6%	0.4%
Mean	1.4	1.3	1.3	1.3
Median	1	1	1	1
Count	54	422	693	1169

### 3. Why did you take this course? Choose all that apply.

	Response by Course Level			
	Lower	Upper	Grad	Total
3a. The course fulfills a general education requirement.	31.6%	27.5%	27.4%	27.6%
3b. The course fulfills a requirement in my major.	45.6%	76.1%	77.8%	75.7%
3c. I have enjoyed the professor's class(es) in the past.	3.5%	12.3%	18.7%	15.7%
3d. The course will improve job/career opportunities.	17.5%	30.0%	32.8%	31.1%
3e. The course sounded interesting to me.	35.1%	15.4%	14.1%	15.5%

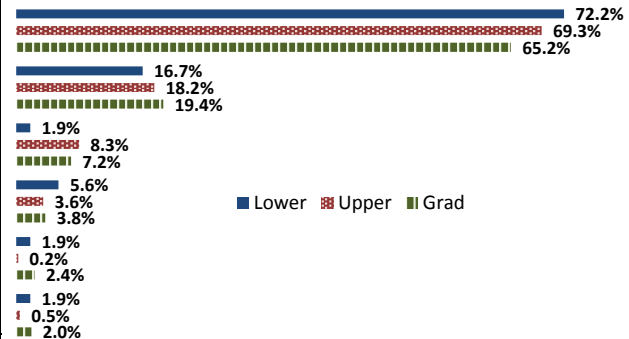
### 4. How would you rate the overall quality of instruction in this course?

	Response by Course Level			
	Lower	Upper	Grad	Total
Excellent (6)	73.2%	64.4%	62.7%	63.8%
Very Good (5)	12.5%	21.5%	20.2%	20.3%
Good (4)	8.9%	9.0%	9.2%	9.1%
Fair (3)	1.8%	4.3%	4.0%	4.0%
Poor (2)	0.0%	0.5%	1.7%	1.2%
Unsatisfactory (1)	3.6%	0.5%	2.3%	1.7%
Mean	5.5	5.4	5.3	5.4
Median	6	6	6	6
Count	56	424	699	1179



### 5. How would you rate your professor's specific contribution to you learning in this course?

	Response by Course Level			
	Lower	Upper	Grad	Total
Excellent (6)	72.2%	69.3%	65.2%	67.0%
Very Good (5)	16.7%	18.2%	19.4%	18.8%
Good (4)	1.9%	8.3%	7.2%	7.4%
Fair (3)	5.6%	3.6%	3.8%	3.8%
Poor (2)	1.9%	0.2%	2.4%	1.6%
Unsatisfactory (1)	1.9%	0.5%	2.0%	1.4%
Mean	5.5	5.5	5.4	5.4
Median	6	6	6	6
Count	54	423	707	1184



## Student Opinion of Teaching Effectiveness (SOTE)- College of Natural Sciences Spring 2017 Term Summary

### 1. Rate your interest in the subject matter of this course before you took the class.

	Response by Course Level			
	Lower	Upper	Grad	Total
Very High (1)	23.0%	36.4%	36.7%	28.5%
High (2)	25.5%	28.8%	24.5%	26.8%
Moderately High (3)	19.8%	18.5%	26.5%	19.3%
Moderately Low (4)	11.6%	7.8%	6.1%	10.0%
Low (5)	12.7%	5.6%	0.0%	9.8%
Very Low (6)	7.4%	2.8%	6.1%	5.5%
Mean	2.9	2.3	2.3	2.6
Median	3	2	2	2
Count	5730	3921	49	9700

### 2. How many class sessions did you attend?

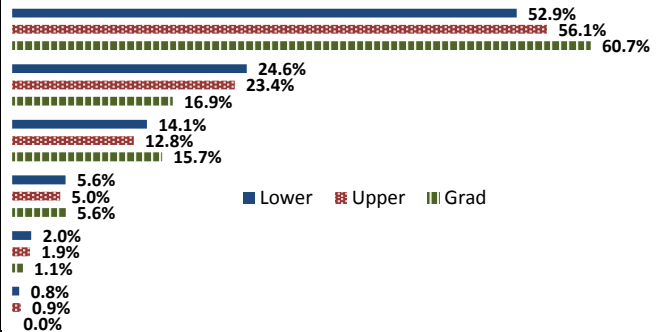
	Response by Course Level			
	Lower	Upper	Grad	Total
All (1)	65.5%	59.5%	81.8%	63.2%
Almost All (2)	30.9%	37.8%	18.2%	33.6%
More than Half (3)	2.9%	2.3%	0.0%	2.6%
Less than Half (4)	0.8%	0.4%	0.0%	0.6%
Mean	1.4	1.4	1.2	1.4
Median	1	1	1	1
Count	5756	3964	88	9808

### 3. Why did you take this course? Choose all that apply.

	Response by Course Level			
	Lower	Upper	Grad	Total
3a. The course fulfills a general education requirement.	53.7%	26.8%	24.2%	42.7%
3b. The course fulfills a requirement in my major.	50.2%	74.7%	76.9%	60.3%
3c. I have enjoyed the professor's class(es) in the past.	4.5%	13.4%	22.0%	8.2%
3d. The course will improve job/career opportunities.	10.9%	19.1%	15.4%	14.2%
3e. The course sounded interesting to me.	11.2%	19.8%	16.5%	14.7%

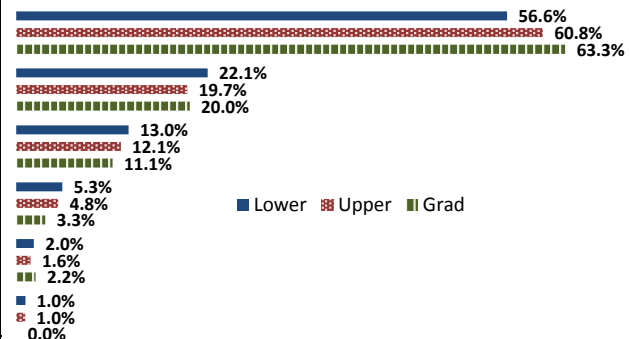
### 4. How would you rate the overall quality of instruction in this course?

	Response by Course Level			
	Lower	Upper	Grad	Total
Excellent (6)	52.9%	56.1%	60.7%	54.3%
Very Good (5)	24.6%	23.4%	16.9%	24.0%
Good (4)	14.1%	12.8%	15.7%	13.6%
Fair (3)	5.6%	5.0%	5.6%	5.4%
Poor (2)	2.0%	1.9%	1.1%	1.9%
Unsatisfactory (1)	0.8%	0.9%	0.0%	0.8%
Mean	5.2	5.2	5.3	5.2
Median	6	6	6	6
Count	5861	4005	89	9955



### 5. How would you rate your professor's specific contribution to you learning in this course?

	Response by Course Level			
	Lower	Upper	Grad	Total
Excellent (6)	56.6%	60.8%	63.3%	58.4%
Very Good (5)	22.1%	19.7%	20.0%	21.1%
Good (4)	13.0%	12.1%	11.1%	12.6%
Fair (3)	5.3%	4.8%	3.3%	5.1%
Poor (2)	2.0%	1.6%	2.2%	1.9%
Unsatisfactory (1)	1.0%	1.0%	0.0%	1.0%
Mean	5.2	5.3	5.4	5.3
Median	6	6	6	6
Count	5848	4018	90	9956



# Student Opinion of Teaching Effectiveness (SOTE)- College of Social and Behavioral Sciences Spring 2017 Term Summary

## 1. Rate your interest in the subject matter of this course before you took the class.

	Response by Course Level			
	Lower	Upper	Grad	Total
Very High (1)	20.5%	34.7%	35.8%	29.6%
High (2)	26.4%	27.6%	25.5%	27.1%
Moderately High (3)	22.3%	17.9%	20.6%	19.6%
Moderately Low (4)	12.5%	8.1%	8.1%	9.7%
Low (5)	13.0%	7.8%	5.9%	9.6%
Very Low (6)	5.2%	4.0%	4.2%	4.4%
Mean	2.9	2.4	2.4	2.6
Median	3	2	2	2
Count	3290	5246	495	9031

## 2. How many class sessions did you attend?

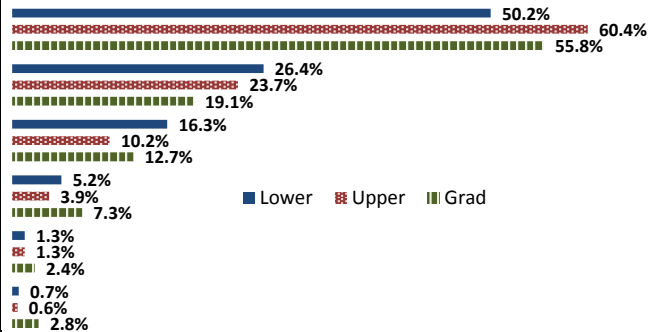
	Response by Course Level			
	Lower	Upper	Grad	Total
All (1)	48.9%	49.9%	67.9%	50.5%
Almost All (2)	45.6%	46.5%	31.3%	45.4%
More than Half (3)	4.5%	3.0%	0.2%	3.4%
Less than Half (4)	1.0%	0.6%	0.6%	0.7%
Mean	1.6	1.5	1.3	1.5
Median	2	2	1	1
Count	3282	5225	479	8986

## 3. Why did you take this course? Choose all that apply.

	Response by Course Level			
	Lower	Upper	Grad	Total
3a. The course fulfills a general education requirement.	73.0%	34.8%	32.0%	48.6%
3b. The course fulfills a requirement in my major.	31.2%	68.9%	74.4%	55.4%
3c. I have enjoyed the professor's class(es) in the past.	3.2%	14.3%	15.0%	10.3%
3d. The course will improve job/career opportunities.	9.2%	19.1%	25.8%	15.9%
3e. The course sounded interesting to me.	18.8%	33.6%	23.0%	27.6%

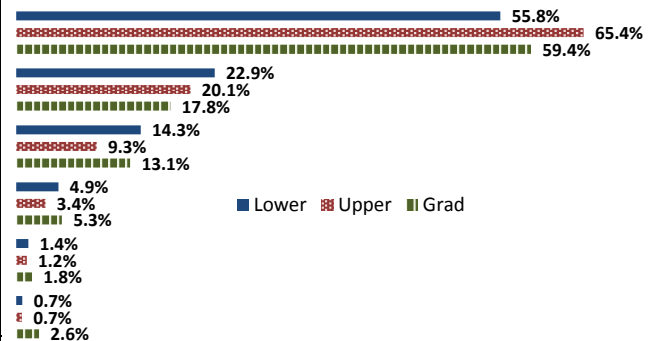
## 4. How would you rate the overall quality of instruction in this course?

	Response by Course Level			
	Lower	Upper	Grad	Total
Excellent (6)	50.2%	60.4%	55.8%	56.4%
Very Good (5)	26.4%	23.7%	19.1%	24.4%
Good (4)	16.3%	10.2%	12.7%	12.6%
Fair (3)	5.2%	3.9%	7.3%	4.5%
Poor (2)	1.3%	1.3%	2.4%	1.4%
Unsatisfactory (1)	0.7%	0.6%	2.8%	0.7%
Mean	5.2	5.4	5.1	5.3
Median	6	6	6	6
Count	3270	5198	504	8972



## 5. How would you rate your professor's specific contribution to you learning in this course?

	Response by Course Level			
	Lower	Upper	Grad	Total
Excellent (6)	55.8%	65.4%	59.4%	61.6%
Very Good (5)	22.9%	20.1%	17.8%	21.0%
Good (4)	14.3%	9.3%	13.1%	11.3%
Fair (3)	4.9%	3.4%	5.3%	4.0%
Poor (2)	1.4%	1.2%	1.8%	1.3%
Unsatisfactory (1)	0.7%	0.7%	2.6%	0.8%
Mean	5.2	5.4	5.2	5.4
Median	6	6	6	6
Count	3312	5243	495	9050



## Student Opinion of Teaching Effectiveness (SOTE)- College of University Studies Spring 2017 Term Summary

### 1. Rate your interest in the subject matter of this course before you took the class.

	Response by Course Level			
	Lower	Upper	Grad	Total
Very High (1)	39.0%	31.6%	0.0%	36.7%
High (2)	22.0%	26.3%	0.0%	23.3%
Moderately High (3)	7.3%	26.3%	0.0%	13.3%
Moderately Low (4)	4.9%	15.8%	0.0%	8.3%
Low (5)	22.0%	0.0%	0.0%	15.0%
Very Low (6)	4.9%	0.0%	0.0%	3.3%
Mean	2.6	2.3	.	2.5
Median	2	2	.	2
Count	41	19	0	60

### 2. How many class sessions did you attend?

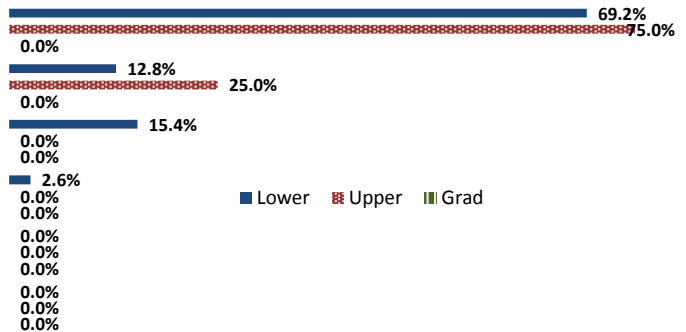
	Response by Course Level			
	Lower	Upper	Grad	Total
All (1)	44.7%	72.2%	0.0%	53.6%
Almost All (2)	50.0%	27.8%	0.0%	42.9%
More than Half (3)	5.3%	0.0%	0.0%	3.6%
Less than Half (4)	0.0%	0.0%	0.0%	0.0%
Mean	1.6	1.3	.	1.5
Median	2	1	.	1
Count	38	18	0	56

### 3. Why did you take this course? Choose all that apply.

	Response by Course Level			
	Lower	Upper	Grad	Total
3a. The course fulfills a general education requirement.	38.3%	36.4%	0.0%	37.7%
3b. The course fulfills a requirement in my major.	14.9%	0.0%	0.0%	10.1%
3c. I have enjoyed the professor's class(es) in the past.	2.1%	4.6%	0.0%	2.9%
3d. The course will improve job/career opportunities.	17.0%	36.4%	0.0%	23.2%
3e. The course sounded interesting to me.	10.6%	9.1%	0.0%	10.1%

### 4. How would you rate the overall quality of instruction in this course?

	Response by Course Level			
	Lower	Upper	Grad	Total
Excellent (6)	69.2%	75.0%	0.0%	71.2%
Very Good (5)	12.8%	25.0%	0.0%	17.0%
Good (4)	15.4%	0.0%	0.0%	10.2%
Fair (3)	2.6%	0.0%	0.0%	1.7%
Poor (2)	0.0%	0.0%	0.0%	0.0%
Unsatisfactory (1)	0.0%	0.0%	0.0%	0.0%
Mean	5.5	5.8	.	5.6
Median	6	6	.	6
Count	39	20	0	59



### 5. How would you rate your professor's specific contribution to your learning in this course?

	Response by Course Level			
	Lower	Upper	Grad	Total
Excellent (6)	76.3%	88.9%	0.0%	80.4%
Very Good (5)	10.5%	11.1%	0.0%	10.7%
Good (4)	10.5%	0.0%	0.0%	7.1%
Fair (3)	2.6%	0.0%	0.0%	1.8%
Poor (2)	0.0%	0.0%	0.0%	0.0%
Unsatisfactory (1)	0.0%	0.0%	0.0%	0.0%
Mean	5.6	5.9	.	5.7
Median	6	6	.	6
Count	38	18	0	56

