

California State University, San Bernardino

CSUSB ScholarWorks

Faculty Senate records

Arthur E. Nelson University Archives

2-5-2014

Student Opinion of Teaching Effectiveness (SOTE) - College of Arts & Letters Fall 2014 Term Summary

CSUSB Faculty Senate

Follow this and additional works at: <https://scholarworks.lib.csusb.edu/facultysenate>

Recommended Citation

CSUSB Faculty Senate, "Student Opinion of Teaching Effectiveness (SOTE) - College of Arts & Letters Fall 2014 Term Summary" (2014). *Faculty Senate records*. 211.
<https://scholarworks.lib.csusb.edu/facultysenate/211>

This Report is brought to you for free and open access by the Arthur E. Nelson University Archives at CSUSB ScholarWorks. It has been accepted for inclusion in Faculty Senate records by an authorized administrator of CSUSB ScholarWorks. For more information, please contact scholarworks@csusb.edu.

Student Opinion of Teaching Effectiveness (SOTE)- College of Arts & Letters Fall 2014 Term Summary

1. Rate your interest in the subject matter of this course before you took the class.

	Response by Course Level			
	Lower	Upper	Grad	Total
Very High (1)	23%	36%	63%	28%
High (2)	27%	24%	16%	26%
Moderately High (3)	24%	20%	14%	22%
Moderately Low (4)	11%	11%	3%	11%
Low (5)	11%	7%	1%	9%
Very Low (6)	4%	3%	2%	4%
Mean	2.7	2.4	1.7	2.6
Median	2	2	1	2
Count	6311	3340	150	9801

2. How many class sessions did you attend?

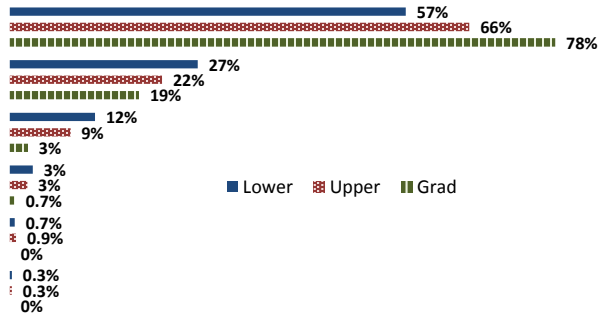
	Response by Course Level			
	Lower	Upper	Grad	Total
All (1)	59%	50%	46%	56%
Almost All (2)	39%	47%	51%	42%
More than Half (3)	3%	3%	3%	3%
Less than Half (4)	0.3%	0.4%	0%	0.3%
Mean	1.4	1.5	1.6	1.48
Median	1	1	2	1
Count	6314	3321	149	9784

3. Why did you take this course? Choose all that apply.

	Response by Course Level			
	Lower	Upper	Grad	Total
3a. The course fulfills a general education requirement.	72%	44%	29%	62%
3b. The course fulfills a requirement in my major.	25%	58%	71%	37%
3c. I have enjoyed the professor's class(es) in the past.	4%	12%	44%	7%
3d. The course will improve job/career opportunities.	17%	20%	41%	19%
3e. The course sounded interesting to me.	23%	35%	45%	27%

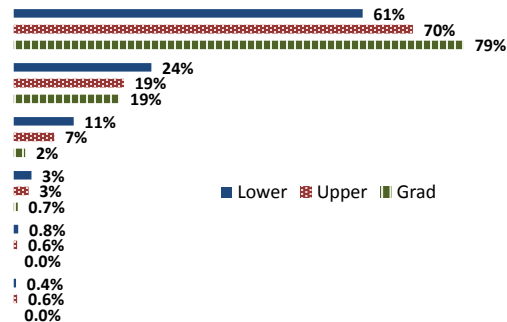
4. How would you rate the overall quality of instruction in this course?

	Response by Course Level			
	Lower	Upper	Grad	Total
Excellent (6)	57%	66%	78%	60%
Very Good (5)	27%	22%	19%	25%
Good (4)	12%	9%	3%	11%
Fair (3)	3%	3%	0.7%	3%
Poor (2)	0.7%	0.9%	0%	0.8%
Unsatisfactory (1)	0.3%	0.3%	0%	0.3%
Mean	5.3	5.5	5.7	5.4
Median	6	6	6	6
Count	6338	3342	151	9831



5. How would you rate your professor's specific contribution to you learning in this course?

	Response by Course Level			
	Lower	Upper	Grad	Total
Excellent (6)	61%	70%	79%	64%
Very Good (5)	24%	19%	19%	22%
Good (4)	11%	7%	2%	9%
Fair (3)	3%	3%	0.7%	3%
Poor (2)	0.8%	0.6%	0.0%	0.7%
Unsatisfactory (1)	0.4%	0.6%	0.0%	0.4%
Mean	5.4	5.5	5.8	5.5
Median	6	6	6	6
Count	6249	3265	151	9665



Student Opinion of Teaching Effectiveness (SOTE)- College of Business & Public Administration Fall 2014 Term Summary

1. Rate your interest in the subject matter of this course before you took the class.

	Response by Course Level			
	Lower	Upper	Grad	Total
Very High (1)	21%	28%	29%	27%
High (2)	24%	28%	30%	27%
Moderately High (3)	24%	23%	24%	23%
Moderately Low (4)	12%	11%	9%	11%
Low (5)	12%	7%	6%	8%
Very Low (6)	8%	3%	3%	4%
Mean	2.9	2.5	2.4	2.6
Median	3	2	2	2
Count	997	2919	603	4519

2. How many class sessions did you attend?

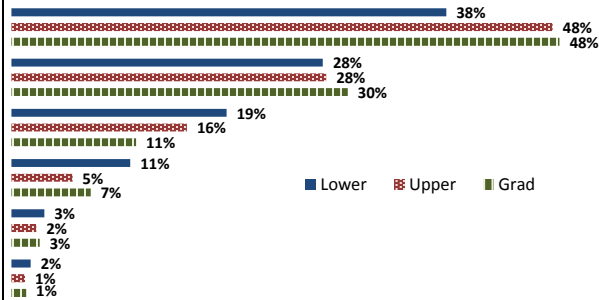
	Response by Course Level			
	Lower	Upper	Grad	Total
All (1)	61%	60%	71%	62%
Almost All (2)	35%	37%	27%	35%
More than Half (3)	3%	2%	2%	2%
Less than Half (4)	2%	0.5%	0.7%	0.8%
Mean	1.5	1.4	1.3	1.4
Median	1	1	1	1
Count	999	2918	594	4511

3. Why did you take this course? Choose all that apply.

	Response by Course Level			
	Lower	Upper	Grad	Total
3a. The course fulfills a general education requirement.	36%	27%	32%	30%
3b. The course fulfills a requirement in my major.	67%	77%	74%	74%
3c. I have enjoyed the professor's class(es) in the past.	2%	6%	8%	6%
3d. The course will improve job/career opportunities.	15%	26%	29%	24%
3e. The course sounded interesting to me.	13%	17%	16%	16%

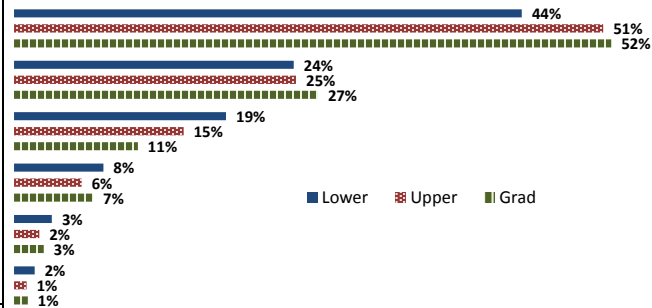
4. How would you rate the overall quality of instruction in this course?

	Response by Course Level			
	Lower	Upper	Grad	Total
Excellent (6)	38%	48%	48%	46%
Very Good (5)	28%	28%	30%	28%
Good (4)	19%	16%	11%	16%
Fair (3)	11%	5%	7%	7%
Poor (2)	3%	2%	3%	2%
Unsatisfactory (1)	2%	1%	1%	1%
Mean	4.8	5.1	5.1	5.0
Median	5	5	5	5
Count	1020	2941	599	4560



5. How would you rate your professor's specific contribution to your learning in this course?

	Response by Course Level			
	Lower	Upper	Grad	Total
Excellent (6)	44%	51%	52%	50%
Very Good (5)	24%	25%	27%	25%
Good (4)	19%	15%	11%	15%
Fair (3)	8%	6%	7%	7%
Poor (2)	3%	2%	3%	3%
Unsatisfactory (1)	2%	1%	1%	1%
Mean	4.9	5.1	5.1	5.1
Median	5	6	6	5
Count	980	2865	582	4427



Student Opinion of Teaching Effectiveness (SOTE)- College of Education Fall 2014 Term Summary

1. Rate your interest in the subject matter of this course before you took the class.

	Response by Course Level			
	Lower	Upper	Grad	Total
Very High (1)	32%	37%	41%	38%
High (2)	38%	30%	25%	28%
Moderately High (3)	14%	21%	18%	19%
Moderately Low (4)	7%	8%	8%	8%
Low (5)	7%	3%	6%	5%
Very Low (6)	1%	2%	4%	3%
Mean	2.2	2.2	2.2	2.2
Median	2	2	2	2
Count	84	592	583	1259

2. How many class sessions did you attend?

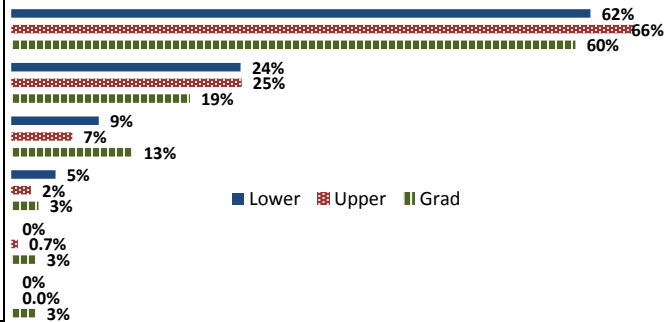
	Response by Course Level			
	Lower	Upper	Grad	Total
All (1)	63%	84%	79%	80%
Almost All (2)	33%	15%	21%	19%
More than Half (3)	4%	0.5%	0.4%	0.6%
Less than Half (4)	0%	1%	1%	0.6%
Mean	1.4	1.2	1.2	1.2
Median	1	1	1	1
Count	81	594	567	1242

3. Why did you take this course? Choose all that apply.

	Response by Course Level			
	Lower	Upper	Grad	Total
3a. The course fulfills a general education requirement.	30%	19%	27%	24%
3b. The course fulfills a requirement in my major.	56%	77%	77%	75%
3c. I have enjoyed the professor's class(es) in the past.	3%	3%	8%	6%
3d. The course will improve job/career opportunities.	28%	30%	27%	29%
3e. The course sounded interesting to me.	35%	11%	8%	11%

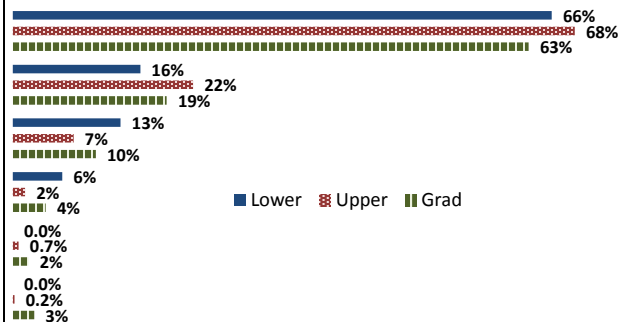
4. How would you rate the overall quality of instruction in this course?

	Response by Course Level			
	Lower	Upper	Grad	Total
Excellent (6)	62%	66%	60%	63%
Very Good (5)	24%	25%	19%	22%
Good (4)	9%	7%	13%	10%
Fair (3)	5%	2%	3%	3%
Poor (2)	0%	0.7%	3%	2%
Unsatisfactory (1)	0%	0.0%	3%	1%
Mean	5.4	5.5	5.2	5.4
Median	6	6	6	6
Count	86	583	583	1252



5. How would you rate your professor's specific contribution to you learning in this course?

	Response by Course Level			
	Lower	Upper	Grad	Total
Excellent (6)	66%	68%	63%	66%
Very Good (5)	16%	22%	19%	20%
Good (4)	13%	7%	10%	9%
Fair (3)	6%	2%	4%	3%
Poor (2)	0.0%	0.7%	2%	1%
Unsatisfactory (1)	0.0%	0.2%	3%	1%
Mean	5.4	5.6	5.3	5.4
Median	6	6	6	6
Count	84	593	573	1250



Student Opinion of Teaching Effectiveness (SOTE)- College of Natural Sciences Fall 2014 Term Summary

1. Rate your interest in the subject matter of this course before you took the class.

	Response by Course Level			
	Lower	Upper	Grad	Total
Very High (1)	25%	34%	40%	28%
High (2)	27%	27%	33%	27%
Moderately High (3)	22%	20%	21%	21%
Moderately Low (4)	10%	8%	4%	10%
Low (5)	10%	7%	1%	9%
Very Low (6)	6%	3%	2%	5%
Mean	2.7	2.4	2.0	2.6
Median	2	2	2	2
Count	8406	3676	160	12242

2. How many class sessions did you attend?

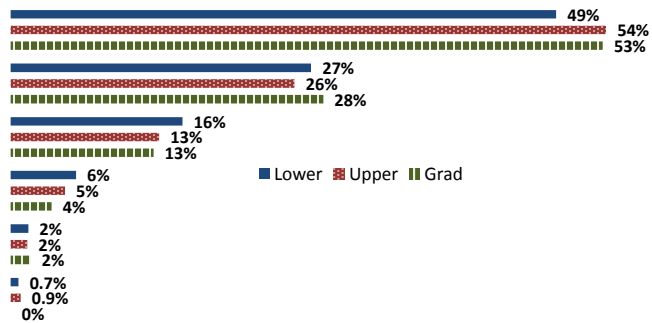
	Response by Course Level			
	Lower	Upper	Grad	Total
All (1)	68%	66%	72%	67%
Almost All (2)	30%	31%	24%	30%
More than Half (3)	2%	2%	3%	2%
Less than Half (4)	0.6%	0.4%	1%	0.5%
Mean	1.4	1.4	1.3	1.4
Median	1	1	1	1
Count	8363	3669	160	12192

3. Why did you take this course? Choose all that apply.

	Response by Course Level			
	Lower	Upper	Grad	Total
3a. The course fulfills a general education requirement.	57%	24%	36%	46%
3b. The course fulfills a requirement in my major.	48%	69%	75%	55%
3c. I have enjoyed the professor's class(es) in the past.	3%	9%	12%	5%
3d. The course will improve job/career opportunities.	12%	20%	30%	15%
3e. The course sounded interesting to me.	17%	17%	17%	17%

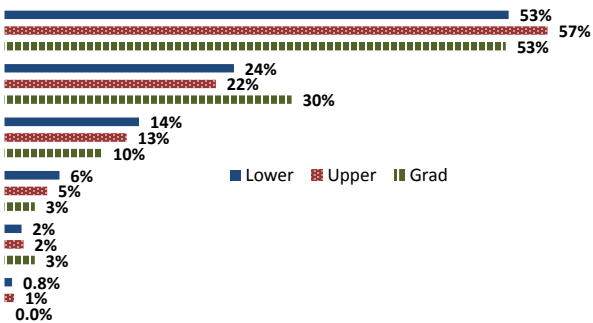
4. How would you rate the overall quality of instruction in this course?

	Response by Course Level			
	Lower	Upper	Grad	Total
Excellent (6)	49%	54%	53%	51%
Very Good (5)	27%	26%	28%	27%
Good (4)	16%	13%	13%	15%
Fair (3)	6%	5%	4%	6%
Poor (2)	2%	2%	2%	2%
Unsatisfactory (1)	0.7%	0.9%	0%	0.8%
Mean	5.1	5.2	5.3	5.2
Median	5	6	6	6
Count	8443	3669	163	12275



5. How would you rate your professor's specific contribution to you learning in this course?

	Response by Course Level			
	Lower	Upper	Grad	Total
Excellent (6)	53%	57%	53%	54%
Very Good (5)	24%	22%	30%	24%
Good (4)	14%	13%	10%	14%
Fair (3)	6%	5%	3%	5%
Poor (2)	2%	2%	3%	2%
Unsatisfactory (1)	0.8%	1%	0.0%	0.9%
Mean	5.2	5.3	5.3	5.2
Median	6	6	6	6
Count	8342	3670	155	12167



Student Opinion of Teaching Effectiveness (SOTE)- College of Social & Behavioral Sciences Fall 2014 Term Summary

1. Rate your interest in the subject matter of this course before you took the class.

	Response by Course Level			
	Lower	Upper	Grad	Total
Very High (1)	21%	29%	42%	27%
High (2)	26%	27%	27%	27%
Moderately High (3)	23%	22%	17%	22%
Moderately Low (4)	12%	10%	7%	11%
Low (5)	12%	8%	4%	9%
Very Low (6)	5%	4%	2%	5%
Mean	2.9	2.5	2.1	2.6
Median	3	2	2	2
Count	4312	5314	622	10248

2. How many class sessions did you attend?

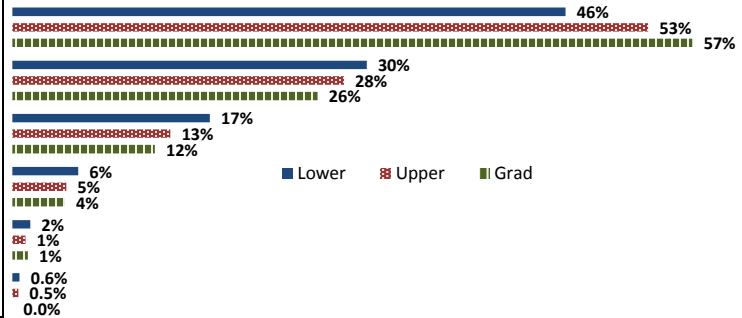
	Response by Course Level			
	Lower	Upper	Grad	Total
All (1)	61%	56%	73%	59%
Almost All (2)	36%	41%	26%	38%
More than Half (3)	3%	3%	0.5%	3%
Less than Half (4)	0.4%	0.4%	0.3%	0.4%
Mean	1.4	1.5	1.3	1.4
Median	1	1	1	1
Count	4329	5316	620	10265

3. Why did you take this course? Choose all that apply.

	Response by Course Level			
	Lower	Upper	Grad	Total
3a. The course fulfills a general education requirement.	67%	36%	27%	49%
3b. The course fulfills a requirement in my major.	33%	69%	80%	54%
3c. I have enjoyed the professor's class(es) in the past.	2%	10%	11%	7%
3d. The course will improve job/career opportunities.	11%	19%	30%	16%
3e. The course sounded interesting to me.	23%	34%	19%	29%

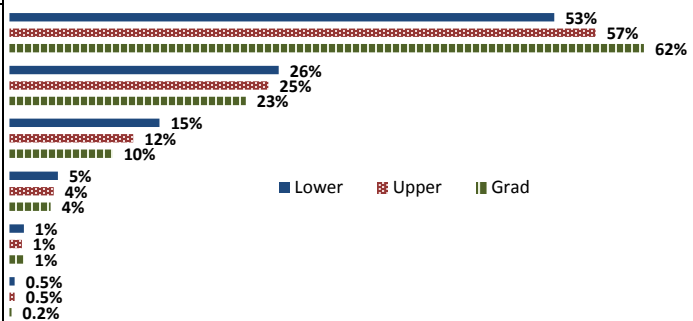
4. How would you rate the overall quality of instruction in this course?

	Response by Course Level			
	Lower	Upper	Grad	Total
Excellent (6)	46%	53%	57%	50%
Very Good (5)	30%	28%	26%	28%
Good (4)	17%	13%	12%	15%
Fair (3)	6%	5%	4%	5%
Poor (2)	2%	1%	1%	1%
Unsatisfactory (1)	0.6%	0.5%	0.0%	0.5%
Mean	5.1	5.3	5.3	5.2
Median	5	6	6	6
Count	4327	5292	611	10230



5. How would you rate your professor's specific contribution to you learning in this course?

	Response by Course Level			
	Lower	Upper	Grad	Total
Excellent (6)	53%	57%	62%	56%
Very Good (5)	26%	25%	23%	25%
Good (4)	15%	12%	10%	13%
Fair (3)	5%	4%	4%	5%
Poor (2)	1%	1%	1%	1%
Unsatisfactory (1)	0.5%	0.5%	0.2%	0.5%
Mean	5.2	5.3	5.4	5.3
Median	6	6	6	6
Count	3982	5223	629	9834



Student Opinion of Teaching Effectiveness (SOTE)- College of University Studies Fall 2014 Term Summary

1. Rate your interest in the subject matter of this course before you took the class.

	Response by Course Level		
	Lower	Upper	Total
Very High (1)	17%	0%	17%
High (2)	25%	25%	25%
Moderately High (3)	22%	8%	22%
Moderately Low (4)	13%	25%	13%
Low (5)	16%	42%	17%
Very Low (6)	7%	0%	7%
Mean	3.1	3.8	3.1
Median	3	4	3
Count	922	12	934

2. How many class sessions did you attend?

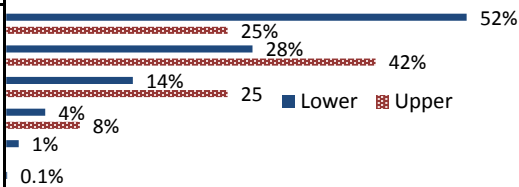
	Response by Course Level		
	Lower	Upper	Total
All (1)	63%	85%	64%
Almost All (2)	35%	15%	34%
More than Half (3)	2%	0%	2%
Less than Half (4)	0.4%	0%	0.4%
Mean	1.4	1.2	1.4
Median	1	1	1
Count	920	13	933

3. Why did you take this course? Choose all that apply.

	Response by Course Level		
	Lower	Upper	Total
3a. The course fulfills a general education requirement.	39%	92%	39%
3b. The course fulfills a requirement in my major.	10%	31%	10%
3c. I have enjoyed the professor's class(es) in the past.	1%	0%	1%
3d. The course will improve job/career opportunities.	16%	15%	16%
3e. The course sounded interesting to me.	32%	8%	32%

4. How would you rate the overall quality of instruction in this course?

	Response by Course Level		
	Lower	Upper	Total
Excellent (6)	52%	25%	52%
Very Good (5)	28%	42%	28%
Good (4)	14%	25%	15%
Fair (3)	4%	8%	4%
Poor (2)	1%	0%	1%
Unsatisfactory (1)	0.1%	0%	0.1%
Mean	5.2	4.8	5.2
Median	6	5	6
Count	935	12	947



5. How would you rate your professor's specific contribution to you learning in

	Response by Course Level		
	Lower	Upper	Total
Excellent (6)	58%	25%	58%
Very Good (5)	23%	42%	24%
Good (4)	13%	25%	13%
Fair (3)	4%	8%	4%
Poor (2)	1%	0%	1%
Unsatisfactory (1)	0%	0%	0.2%
Mean	5.3	4.8	5.3
Median	6	5	6
Count	926	12	938

