

California State University, San Bernardino

**CSUSB ScholarWorks**

---

Faculty Senate records

Arthur E. Nelson University Archives

---

6-2-2016

## Student Opinion of Teaching Effectiveness (SOTE) - College of Arts & Letters Fall 2015 Term Summary

CSUSB Faculty Senate

Follow this and additional works at: <https://scholarworks.lib.csusb.edu/facultysenate>

---

### Recommended Citation

CSUSB Faculty Senate, "Student Opinion of Teaching Effectiveness (SOTE) - College of Arts & Letters Fall 2015 Term Summary" (2016). *Faculty Senate records*. 147.  
<https://scholarworks.lib.csusb.edu/facultysenate/147>

This Report is brought to you for free and open access by the Arthur E. Nelson University Archives at CSUSB ScholarWorks. It has been accepted for inclusion in Faculty Senate records by an authorized administrator of CSUSB ScholarWorks. For more information, please contact [scholarworks@csusb.edu](mailto:scholarworks@csusb.edu).

## Student Opinion of Teaching Effectiveness (SOTE)- College of Arts & Letters Fall 2015 Term Summary

### 1. Rate your interest in the subject matter of this course before you took the class.

	Response by Course Level			
	Lower	Upper	Grad	Total
Very High (1)	26.1%	34.4%	61.3%	29.3%
High (2)	26.4%	24.9%	21.9%	25.9%
Moderately High (3)	22.9%	20.7%	12.4%	22.0%
Moderately Low (4)	10.5%	9.8%	3.6%	10.1%
Low (5)	10.5%	7.0%	0.7%	9.2%
Very Low (6)	3.6%	3.2%	0.0%	3.5%
Mean	2.6	2.4	1.6	2.5
Median	2	2	1	2
Count	6199	3143	137	9479

### 2. How many class sessions did you attend?

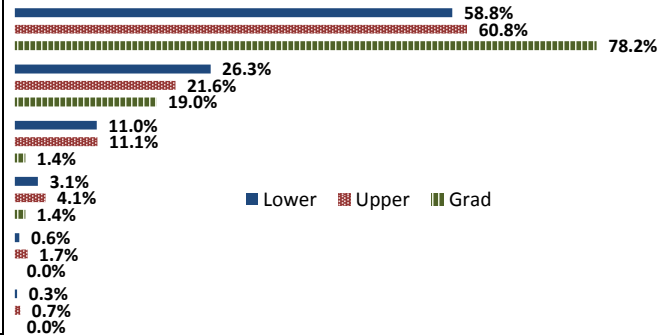
	Response by Course Level			
	Lower	Upper	Grad	Total
All (1)	53.8%	50.2%	52.5%	52.6%
Almost All (2)	42.9%	46.7%	47.5%	44.2%
More than Half (3)	2.9%	2.8%	0.0%	2.8%
Less than Half (4)	0.5%	0.4%	0.0%	0.4%
Mean	1.5	1.5	1.5	1.5
Median	1	1	1	1
Count	6212	3142	141	9495

### 3. Why did you take this course? Choose all that apply.

	Response by Course Level			
	Lower	Upper	Grad	Total
3a. The course fulfills a general education requirement.	70.3%	42.5%	33.6%	60.7%
3b. The course fulfills a requirement in my major.	26.7%	59.4%	76.7%	38.2%
3c. I have enjoyed the professor's class(es) in the past.	4.1%	11.5%	38.4%	7.1%
3d. The course will improve job/career opportunities.	17.7%	19.7%	30.1%	18.5%
3e. The course sounded interesting to me.	24.2%	33.2%	37.0%	27.4%

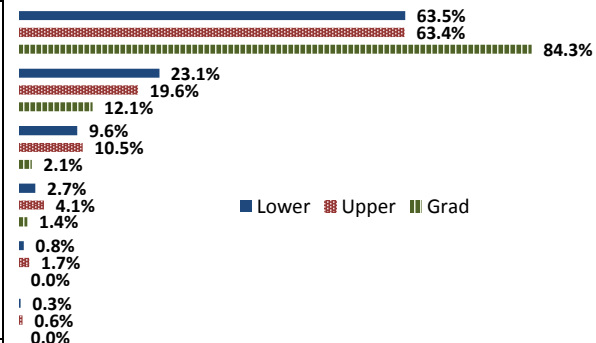
### 4. How would you rate the overall quality of instruction in this course?

	Response by Course Level			
	Lower	Upper	Grad	Total
Excellent (6)	58.8%	60.8%	78.2%	59.7%
Very Good (5)	26.3%	21.6%	19.0%	24.7%
Good (4)	11.0%	11.1%	1.4%	10.9%
Fair (3)	3.1%	4.1%	1.4%	3.4%
Poor (2)	0.6%	1.7%	0.0%	0.9%
Unsatisfactory (1)	0.3%	0.7%	0.0%	0.4%
Mean	5.4	5.3	5.7	5.4
Median	6	6	6	6
Count	6221	3146	142	9509



### 5. How would you rate your professor's specific contribution to you learning in this course?

	Response by Course Level			
	Lower	Upper	Grad	Total
Excellent (6)	63.5%	63.4%	84.3%	63.8%
Very Good (5)	23.1%	19.6%	12.1%	21.8%
Good (4)	9.6%	10.5%	2.1%	9.8%
Fair (3)	2.7%	4.1%	1.4%	3.2%
Poor (2)	0.8%	1.7%	0.0%	1.0%
Unsatisfactory (1)	0.3%	0.6%	0.0%	0.4%
Mean	5.4	5.4	5.8	5.4
Median	6	6	6	6
Count	6105	3116	140	9361



# Student Opinion of Teaching Effectiveness (SOTE)- College of Business and Public Administration Fall 2015 Term Summary

## 1. Rate your interest in the subject matter of this course before you took the class.

	Response by Course Level			
	Lower	Upper	Grad	Total
Very High (1)	19.8%	29.2%	33.4%	27.9%
High (2)	23.3%	28.5%	26.5%	27.3%
Moderately High (3)	25.2%	22.2%	23.7%	23.0%
Moderately Low (4)	13.3%	9.3%	7.4%	9.9%
Low (5)	10.4%	7.6%	7.0%	8.1%
Very Low (6)	8.0%	3.1%	1.9%	3.9%
Mean	3.0	2.5	2.3	2.5
Median	3	2	2	2
Count	935	3174	569	4678

## 2. How many class sessions did you attend?

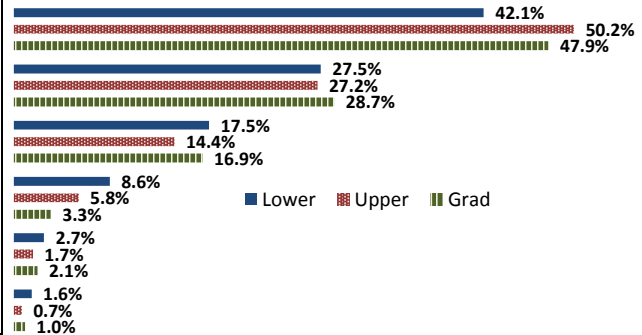
	Response by Course Level			
	Lower	Upper	Grad	Total
All (1)	51.4%	58.6%	75.4%	59.1%
Almost All (2)	43.1%	38.7%	22.2%	37.6%
More than Half (3)	4.8%	2.1%	1.6%	2.6%
Less than Half (4)	0.7%	0.6%	0.9%	0.7%
Mean	1.5	1.4	1.3	1.4
Median	1	1	1	1
Count	946	3177	564	4687

## 3. Why did you take this course? Choose all that apply.

	Response by Course Level			
	Lower	Upper	Grad	Total
3a. The course fulfills a general education requirement.	34.0%	27.7%	32.9%	29.7%
3b. The course fulfills a requirement in my major.	60.1%	76.9%	71.2%	72.6%
3c. I have enjoyed the professor's class(es) in the past.	2.8%	4.8%	7.9%	4.7%
3d. The course will improve job/career opportunities.	20.1%	26.2%	29.8%	25.3%
3e. The course sounded interesting to me.	14.5%	16.0%	19.5%	16.1%

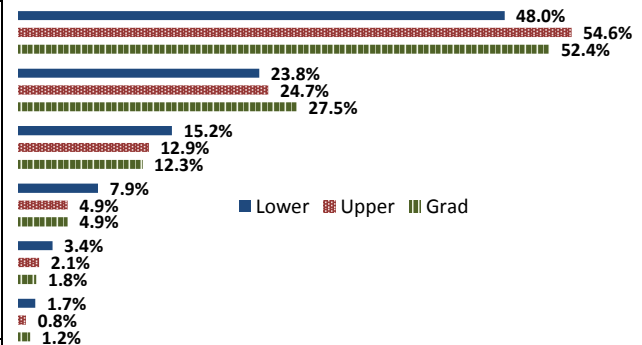
## 4. How would you rate the overall quality of instruction in this course?

	Response by Course Level			
	Lower	Upper	Grad	Total
Excellent (6)	42.1%	50.2%	47.9%	48.3%
Very Good (5)	27.5%	27.2%	28.7%	27.5%
Good (4)	17.5%	14.4%	16.9%	15.3%
Fair (3)	8.6%	5.8%	3.3%	6.1%
Poor (2)	2.7%	1.7%	2.1%	2.0%
Unsatisfactory (1)	1.6%	0.7%	1.0%	0.9%
Mean	4.9	5.2	5.1	5.1
Median	5	6	5	5
Count	950	3185	574	4709



## 5. How would you rate your professor's specific contribution to you learning in this course?

	Response by Course Level			
	Lower	Upper	Grad	Total
Excellent (6)	48.0%	54.6%	52.4%	53.0%
Very Good (5)	23.8%	24.7%	27.5%	24.9%
Good (4)	15.2%	12.9%	12.3%	13.3%
Fair (3)	7.9%	4.9%	4.9%	5.5%
Poor (2)	3.4%	2.1%	1.8%	2.3%
Unsatisfactory (1)	1.7%	0.8%	1.2%	1.0%
Mean	5.0	5.2	5.2	5.2
Median	5	6	6	6
Count	946	3154	571	4671



## Student Opinion of Teaching Effectiveness (SOTE)- College of Education Fall 2015 Term Summary

### 1. Rate your interest in the subject matter of this course before you took the class.

	Response by Course Level			
	Lower	Upper	Grad	Total
Very High (1)	41.7%	33.1%	31.9%	33.0%
High (2)	33.3%	27.4%	22.8%	25.4%
Moderately High (3)	16.7%	16.7%	15.4%	16.0%
Moderately Low (4)	5.2%	8.0%	9.3%	8.5%
Low (5)	2.1%	8.0%	9.8%	8.6%
Very Low (6)	1.0%	6.9%	10.8%	8.5%
Mean	2.0	2.5	2.7	2.6
Median	2	2	2	2
Count	96	726	846	1668

### 2. How many class sessions did you attend?

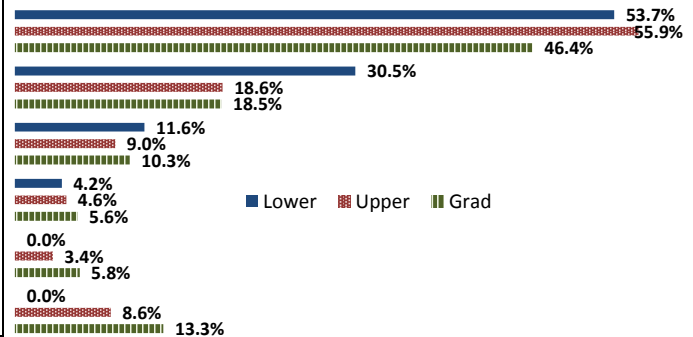
	Response by Course Level			
	Lower	Upper	Grad	Total
All (1)	65.3%	70.1%	60.3%	64.8%
Almost All (2)	33.7%	15.6%	15.4%	16.5%
More than Half (3)	1.1%	1.9%	4.0%	2.9%
Less than Half (4)	0.0%	12.3%	20.3%	15.7%
Mean	1.4	1.6	1.8	1.7
Median	1	1	1	1
Count	95	723	846	1664

### 3. Why did you take this course? Choose all that apply.

	Response by Course Level			
	Lower	Upper	Grad	Total
3a. The course fulfills a general education requirement.	34.3%	23.4%	21.6%	23.1%
3b. The course fulfills a requirement in my major.	56.6%	53.2%	59.4%	56.2%
3c. I have enjoyed the professor's class(es) in the past.	2.0%	2.7%	6.6%	4.5%
3d. The course will improve job/career opportunities.	25.3%	24.0%	25.6%	24.8%
3e. The course sounded interesting to me.	34.3%	11.5%	15.0%	14.3%

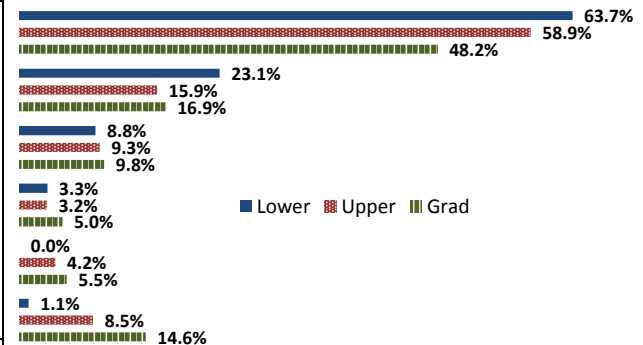
### 4. How would you rate the overall quality of instruction in this course?

	Response by Course Level			
	Lower	Upper	Grad	Total
Excellent (6)	53.7%	55.9%	46.4%	51.0%
Very Good (5)	30.5%	18.6%	18.5%	19.3%
Good (4)	11.6%	9.0%	10.3%	9.8%
Fair (3)	4.2%	4.6%	5.6%	5.1%
Poor (2)	0.0%	3.4%	5.8%	4.5%
Unsatisfactory (1)	0.0%	8.6%	13.3%	10.5%
Mean	5.3	4.9	4.5	4.8
Median	6	6	5	6
Count	95	725	842	1662



### 5. How would you rate your professor's specific contribution to you learning in this course?

	Response by Course Level			
	Lower	Upper	Grad	Total
Excellent (6)	63.7%	58.9%	48.2%	53.8%
Very Good (5)	23.1%	15.9%	16.9%	16.8%
Good (4)	8.8%	9.3%	9.8%	9.6%
Fair (3)	3.3%	3.2%	5.0%	4.1%
Poor (2)	0.0%	4.2%	5.5%	4.6%
Unsatisfactory (1)	1.1%	8.5%	14.6%	11.2%
Mean	5.4	5.0	4.5	4.8
Median	6	6	5	6
Count	91	718	823	1632



## Student Opinion of Teaching Effectiveness (SOTE)- College of Natural Sciences Fall 2015 Term Summary

### 1. Rate your interest in the subject matter of this course before you took the class.

	Response by Course Level			
	Lower	Upper	Grad	Total
Very High (1)	23.6%	34.3%	42.2%	27.2%
High (2)	25.8%	28.0%	29.4%	26.5%
Moderately High (3)	21.1%	19.5%	18.3%	20.6%
Moderately Low (4)	11.0%	8.6%	5.5%	10.2%
Low (5)	11.8%	6.8%	4.6%	10.1%
Very Low (6)	6.7%	2.8%	0.0%	5.4%
Mean	2.8	2.3	2.0	2.7
Median	3	2	2	2
Count	8447	4143	109	12699

### 2. How many class sessions did you attend?

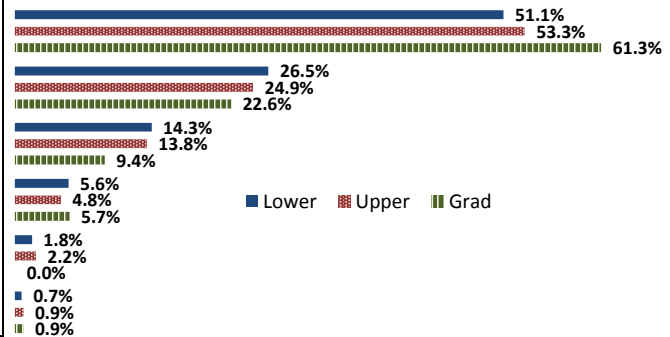
	Response by Course Level			
	Lower	Upper	Grad	Total
All (1)	65.8%	66.0%	72.5%	65.9%
Almost All (2)	31.6%	31.5%	26.6%	31.5%
More than Half (3)	2.1%	2.4%	0.0%	2.2%
Less than Half (4)	0.5%	0.1%	0.9%	0.4%
Mean	1.4	1.4	1.3	1.4
Median	1	1	1	1
Count	8466	4102	109	12677

### 3. Why did you take this course? Choose all that apply.

	Response by Course Level			
	Lower	Upper	Grad	Total
3a. The course fulfills a general education requirement.	57.5%	25.6%	30.3%	46.8%
3b. The course fulfills a requirement in my major.	45.1%	72.1%	60.7%	54.1%
3c. I have enjoyed the professor's class(es) in the past.	2.6%	8.8%	8.2%	4.7%
3d. The course will improve job/career opportunities.	11.0%	20.3%	18.9%	14.2%
3e. The course sounded interesting to me.	17.0%	18.5%	17.2%	17.5%

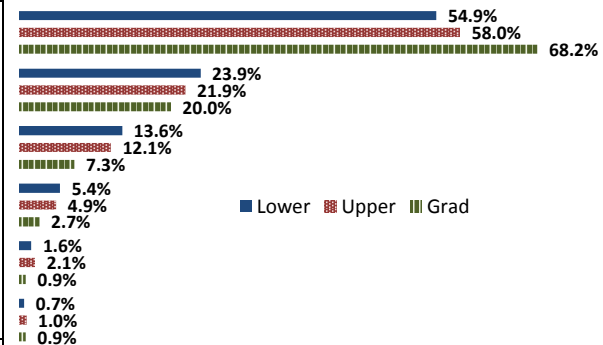
### 4. How would you rate the overall quality of instruction in this course?

	Response by Course Level			
	Lower	Upper	Grad	Total
Excellent (6)	51.1%	53.3%	61.3%	51.9%
Very Good (5)	26.5%	24.9%	22.6%	25.9%
Good (4)	14.3%	13.8%	9.4%	14.1%
Fair (3)	5.6%	4.8%	5.7%	5.3%
Poor (2)	1.8%	2.2%	0.0%	1.9%
Unsatisfactory (1)	0.7%	0.9%	0.9%	0.8%
Mean	5.2	5.2	5.4	5.2
Median	6	6	6	6
Count	8495	4140	106	12741



### 5. How would you rate your professor's specific contribution to you learning in this course?

	Response by Course Level			
	Lower	Upper	Grad	Total
Excellent (6)	54.9%	58.0%	68.2%	56.0%
Very Good (5)	23.9%	21.9%	20.0%	23.2%
Good (4)	13.6%	12.1%	7.3%	13.1%
Fair (3)	5.4%	4.9%	2.7%	5.2%
Poor (2)	1.6%	2.1%	0.9%	1.8%
Unsatisfactory (1)	0.7%	1.0%	0.9%	0.8%
Mean	5.2	5.3	5.5	5.2
Median	6	6	6	6
Count	8405	4144	110	12659



# Student Opinion of Teaching Effectiveness (SOTE)- College of Social and Behavioral Sciences Fall 2015 Term Summary

## 1. Rate your interest in the subject matter of this course before you took the class.

	Response by Course Level			
	Lower	Upper	Grad	Total
Very High (1)	20.3%	30.6%	43.3%	27.4%
High (2)	25.8%	27.8%	25.3%	26.8%
Moderately High (3)	23.2%	20.8%	18.3%	21.6%
Moderately Low (4)	13.1%	8.8%	7.3%	10.4%
Low (5)	12.3%	8.5%	3.9%	9.7%
Very Low (6)	5.3%	3.5%	2.0%	4.1%
Mean	2.9	2.5	2.1	2.6
Median	3	2	2	2
Count	4305	5908	712	10925

## 2. How many class sessions did you attend?

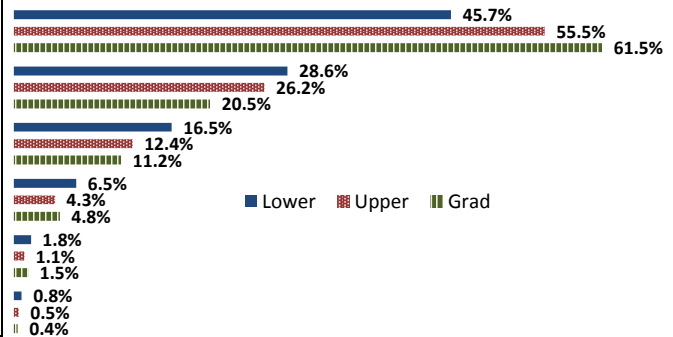
	Response by Course Level			
	Lower	Upper	Grad	Total
All (1)	56.0%	55.0%	71.7%	56.5%
Almost All (2)	39.4%	41.5%	27.1%	39.7%
More than Half (3)	3.9%	2.9%	0.8%	3.2%
Less than Half (4)	0.7%	0.6%	0.4%	0.6%
Mean	1.5	1.5	1.3	1.5
Median	1	1	1	1
Count	4286	5862	706	10854

## 3. Why did you take this course? Choose all that apply.

	Response by Course Level			
	Lower	Upper	Grad	Total
3a. The course fulfills a general education requirement.	66.5%	34.4%	26.4%	46.6%
3b. The course fulfills a requirement in my major.	34.3%	66.9%	81.1%	54.9%
3c. I have enjoyed the professor's class(es) in the past.	2.9%	8.8%	11.0%	6.6%
3d. The course will improve job/career opportunities.	11.5%	18.4%	25.1%	16.1%
3e. The course sounded interesting to me.	22.8%	32.7%	16.5%	27.8%

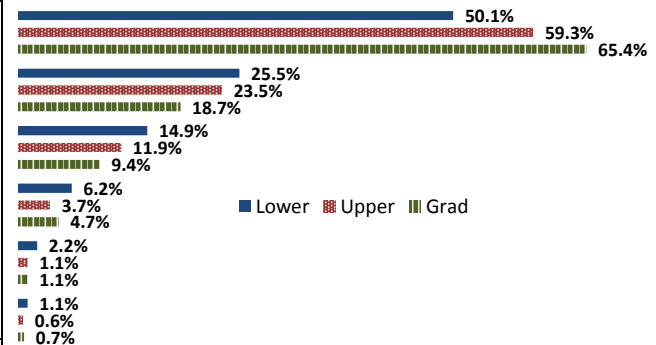
## 4. How would you rate the overall quality of instruction in this course?

	Response by Course Level			
	Lower	Upper	Grad	Total
Excellent (6)	45.7%	55.5%	61.5%	52.0%
Very Good (5)	28.6%	26.2%	20.5%	26.8%
Good (4)	16.5%	12.4%	11.2%	13.9%
Fair (3)	6.5%	4.3%	4.8%	5.2%
Poor (2)	1.8%	1.1%	1.5%	1.4%
Unsatisfactory (1)	0.8%	0.5%	0.4%	0.6%
Mean	5.1	5.3	5.3	5.2
Median	5	6	6	6
Count	4311	5938	712	10961



## 5. How would you rate your professor's specific contribution to you learning in this course?

	Response by Course Level			
	Lower	Upper	Grad	Total
Excellent (6)	50.1%	59.3%	65.4%	56.1%
Very Good (5)	25.5%	23.5%	18.7%	23.9%
Good (4)	14.9%	11.9%	9.4%	12.9%
Fair (3)	6.2%	3.7%	4.7%	4.8%
Poor (2)	2.2%	1.1%	1.1%	1.5%
Unsatisfactory (1)	1.1%	0.6%	0.7%	0.8%
Mean	5.1	5.3	5.4	5.3
Median	6	6	6	6
Count	4243	5824	723	10790



## Student Opinion of Teaching Effectiveness (SOTE)- College of University Studies Fall 2015 Term Summary

### 1. Rate your interest in the subject matter of this course before you took the class.

	Response by Course Level			
	Lower	Upper	Grad	Total
Very High (1)	17.7%	10.0%	0.0%	17.6%
High (2)	25.9%	50.0%	0.0%	26.2%
Moderately High (3)	23.1%	10.0%	0.0%	22.9%
Moderately Low (4)	13.1%	10.0%	0.0%	13.0%
Low (5)	15.3%	10.0%	0.0%	15.2%
Very Low (6)	4.9%	10.0%	0.0%	5.0%
Mean	3.0	2.9	N/A	3.0
Median	3	2	N/A	3
Count	818	10	0	828

### 2. How many class sessions did you attend?

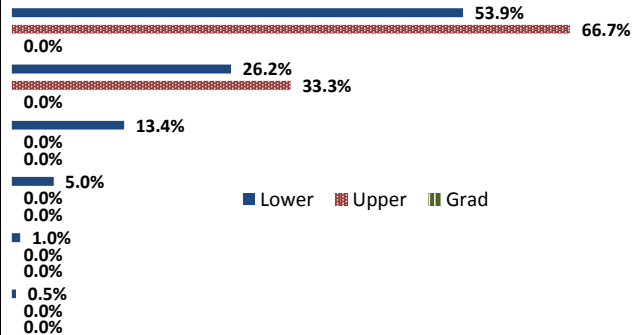
	Response by Course Level			
	Lower	Upper	Grad	Total
All (1)	60.6%	87.5%	0.0%	60.8%
Almost All (2)	37.5%	12.5%	0.0%	37.2%
More than Half (3)	1.3%	0.0%	0.0%	1.3%
Less than Half (4)	0.6%	0.0%	0.0%	0.6%
Mean	1.4	1.1	N/A	1.4
Median	1	1	N/A	1
Count	817	8	0	825

### 3. Why did you take this course? Choose all that apply.

	Response by Course Level			
	Lower	Upper	Grad	Total
3a. The course fulfills a general education requirement.	40.3%	90.0%	0.0%	40.9%
3b. The course fulfills a requirement in my major.	7.5%	0.0%	0.0%	7.4%
3c. I have enjoyed the professor's class(es) in the past.	1.7%	0.0%	0.0%	1.7%
3d. The course will improve job/career opportunities.	14.9%	10.0%	0.0%	14.9%
3e. The course sounded interesting to me.	29.1%	0.0%	0.0%	28.8%

### 4. How would you rate the overall quality of instruction in this course?

	Response by Course Level			
	Lower	Upper	Grad	Total
Excellent (6)	53.9%	66.7%	0.0%	54.0%
Very Good (5)	26.2%	33.3%	0.0%	26.3%
Good (4)	13.4%	0.0%	0.0%	13.3%
Fair (3)	5.0%	0.0%	0.0%	4.9%
Poor (2)	1.0%	0.0%	0.0%	1.0%
Unsatisfactory (1)	0.5%	0.0%	0.0%	0.5%
Mean	5.3	5.7	N/A	5.3
Median	6	6	N/A	6
Count	820	9	0	829



### 5. How would you rate your professor's specific contribution to you learning in this course?

	Response by Course Level			
	Lower	Upper	Grad	Total
Excellent (6)	62.3%	70.0%	0.0%	62.4%
Very Good (5)	21.7%	30.0%	0.0%	21.8%
Good (4)	10.5%	0.0%	0.0%	10.4%
Fair (3)	4.6%	0.0%	0.0%	4.6%
Poor (2)	0.8%	0.0%	0.0%	0.7%
Unsatisfactory (1)	0.1%	0.0%	0.0%	0.1%
Mean	5.4	5.7	N/A	5.4
Median	6	6	N/A	6
Count	798	10	0	808

