

California State University, San Bernardino

CSUSB ScholarWorks

Faculty Senate records

Arthur E. Nelson University Archives

2-1-2018

Student Opinion of Teaching Effectiveness (SOTE) - College of Arts & Letters Fall 2017 Term Summary

CSUSB Faculty Senate

Follow this and additional works at: <https://scholarworks.lib.csusb.edu/facultysenate>

Recommended Citation

CSUSB Faculty Senate, "Student Opinion of Teaching Effectiveness (SOTE) - College of Arts & Letters Fall 2017 Term Summary" (2018). *Faculty Senate records*. 144.
<https://scholarworks.lib.csusb.edu/facultysenate/144>

This Report is brought to you for free and open access by the Arthur E. Nelson University Archives at CSUSB ScholarWorks. It has been accepted for inclusion in Faculty Senate records by an authorized administrator of CSUSB ScholarWorks. For more information, please contact scholarworks@csusb.edu.

Student Opinion of Teaching Effectiveness (SOTE)- College of Arts & Letters Fall 2017 Term Summary

1. Rate your interest in the subject matter of this course before you took the class.

	Response by Course Level			
	Lower	Upper	Grad	Total
Very High (1)	24.5%	34.9%	50.0%	28.8%
High (2)	24.9%	25.6%	22.3%	25.1%
Moderately High (3)	22.4%	19.8%	19.2%	21.4%
Moderately Low (4)	11.6%	9.3%	4.3%	10.6%
Low (5)	12.1%	7.1%	1.1%	10.1%
Very Low (6)	4.6%	3.3%	3.2%	4.1%
Mean	2.8	2.4	1.9	2.6
Median	3	2	2	2
Count	5058	3141	94	8293

2. How many class sessions did you attend?

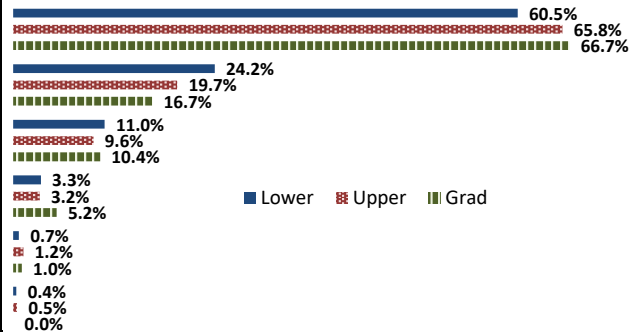
	Response by Course Level			
	Lower	Upper	Grad	Total
All (1)	52.7%	50.4%	51.7%	51.8%
Almost All (2)	43.6%	45.8%	46.2%	44.4%
More than Half (3)	2.9%	3.3%	2.2%	3.1%
Less than Half (4)	0.8%	0.6%	0.0%	0.7%
Mean	1.5	1.5	1.5	1.5
Median	1	1	1	1
Count	5038	3161	91	8290

3. Why did you take this course? Choose all that apply.

	Response by Course Level			
	Lower	Upper	Grad	Total
3a. The course fulfills a general education requirement.	71.9%	46.3%	28.9%	61.7%
3b. The course fulfills a requirement in my major.	25.0%	58.2%	76.3%	38.1%
3c. I have enjoyed the professor's class(es) in the past.	3.3%	9.0%	25.8%	5.7%
3d. The course will improve job/career opportunities.	14.7%	20.2%	39.2%	17.1%
3e. The course sounded interesting to me.	24.7%	32.8%	37.1%	27.9%

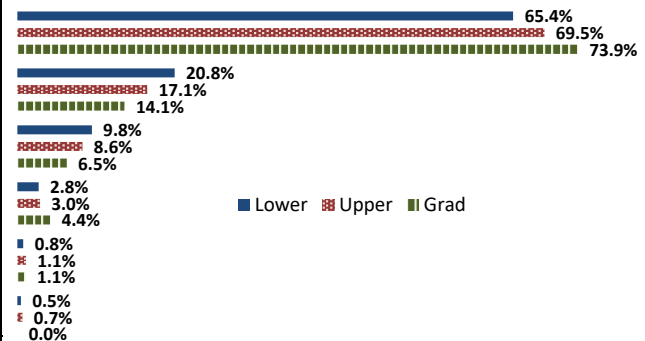
4. How would you rate the overall quality of instruction in this course?

	Response by Course Level			
	Lower	Upper	Grad	Total
Excellent (6)	60.5%	65.8%	66.7%	62.6%
Very Good (5)	24.2%	19.7%	16.7%	22.4%
Good (4)	11.0%	9.6%	10.4%	10.5%
Fair (3)	3.3%	3.2%	5.2%	3.3%
Poor (2)	0.7%	1.2%	1.0%	0.9%
Unsatisfactory (1)	0.4%	0.5%	0.0%	0.4%
Mean	5.4	5.4	5.4	5.4
Median	6	6	6	6
Count	5053	3178	96	8327



5. How would you rate your professor's specific contribution to your learning in this course?

	Response by Course Level			
	Lower	Upper	Grad	Total
Excellent (6)	65.4%	69.5%	73.9%	67.0%
Very Good (5)	20.8%	17.1%	14.1%	19.3%
Good (4)	9.8%	8.6%	6.5%	9.3%
Fair (3)	2.8%	3.0%	4.4%	2.9%
Poor (2)	0.8%	1.1%	1.1%	0.9%
Unsatisfactory (1)	0.5%	0.7%	0.0%	0.6%
Mean	5.5	5.5	5.6	5.5
Median	6	6	6	6
Count	5008	3156	92	8256



Student Opinion of Teaching Effectiveness (SOTE)- College of Business and Public Administration Fall 2017 Term Summary

1. Rate your interest in the subject matter of this course before you took the class.

	Response by Course Level			
	Lower	Upper	Grad	Total
Very High (1)	23.7%	31.6%	37.9%	30.6%
High (2)	27.7%	27.6%	24.9%	27.4%
Moderately High (3)	22.8%	20.7%	19.9%	21.1%
Moderately Low (4)	9.1%	9.9%	10.5%	9.8%
Low (5)	11.5%	7.3%	4.5%	7.9%
Very Low (6)	5.2%	2.9%	2.4%	3.3%
Mean	2.7	2.4	2.3	2.5
Median	2	2	2	2
Count	1054	3654	507	5215

2. How many class sessions did you attend?

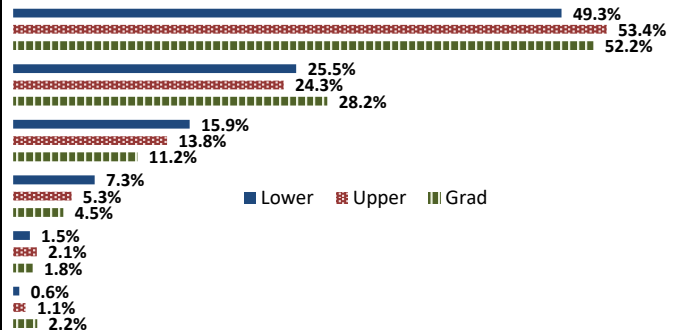
	Response by Course Level			
	Lower	Upper	Grad	Total
All (1)	61.8%	61.7%	73.5%	62.8%
Almost All (2)	33.4%	35.5%	24.4%	34.0%
More than Half (3)	3.6%	2.2%	1.2%	2.4%
Less than Half (4)	1.2%	0.6%	1.0%	0.8%
Mean	1.4	1.4	1.3	1.4
Median	1	1	1	1
Count	1058	3632	501	5191

3. Why did you take this course? Choose all that apply.

	Response by Course Level			
	Lower	Upper	Grad	Total
3a. The course fulfills a general education requirement.	40.1%	27.0%	32.1%	30.2%
3b. The course fulfills a requirement in my major.	66.3%	81.2%	75.4%	77.6%
3c. I have enjoyed the professor's class(es) in the past.	3.3%	6.4%	8.8%	6.0%
3d. The course will improve job/career opportunities.	24.6%	25.3%	27.5%	25.3%
3e. The course sounded interesting to me.	19.0%	16.5%	18.0%	17.2%

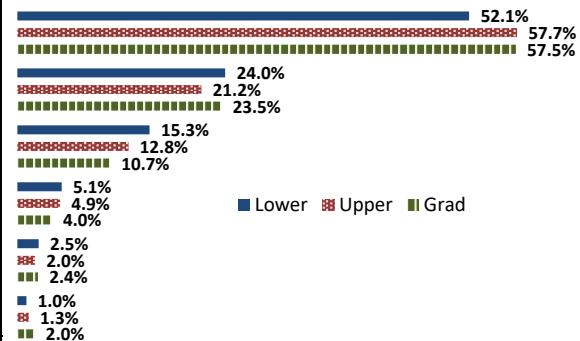
4. How would you rate the overall quality of instruction in this course?

	Response by Course Level			
	Lower	Upper	Grad	Total
Excellent (6)	49.3%	53.4%	52.2%	52.4%
Very Good (5)	25.5%	24.3%	28.2%	24.9%
Good (4)	15.9%	13.8%	11.2%	14.0%
Fair (3)	7.3%	5.3%	4.5%	5.6%
Poor (2)	1.5%	2.1%	1.8%	2.0%
Unsatisfactory (1)	0.6%	1.1%	2.2%	1.1%
Mean	5.1	5.2	5.2	5.2
Median	5	6	6	6
Count	1065	3660	510	5235



5. How would you rate your professor's specific contribution to you learning in this course?

	Response by Course Level			
	Lower	Upper	Grad	Total
Excellent (6)	52.1%	57.7%	57.5%	56.5%
Very Good (5)	24.0%	21.2%	23.5%	22.0%
Good (4)	15.3%	12.8%	10.7%	13.1%
Fair (3)	5.1%	4.9%	4.0%	4.9%
Poor (2)	2.5%	2.0%	2.4%	2.2%
Unsatisfactory (1)	1.0%	1.3%	2.0%	1.3%
Mean	5.2	5.2	5.2	5.2
Median	5	6	6	6
Count	1055	3634	506	5195



Student Opinion of Teaching Effectiveness (SOTE)- College of Education Fall 2017 Term Summary

1. Rate your interest in the subject matter of this course before you took the class.

	Response by Course Level			
	Lower	Upper	Grad	Total
Very High (1)	34.7%	37.5%	45.0%	40.9%
High (2)	30.6%	27.5%	28.6%	28.1%
Moderately High (3)	25.0%	19.8%	15.8%	18.2%
Moderately Low (4)	6.9%	7.3%	6.0%	6.7%
Low (5)	1.4%	4.3%	3.4%	3.8%
Very Low (6)	1.4%	3.5%	1.2%	2.4%
Mean	2.1	2.2	2.0	2.1
Median	2	2	2	2
Count	72	877	818	1767

2. How many class sessions did you attend?

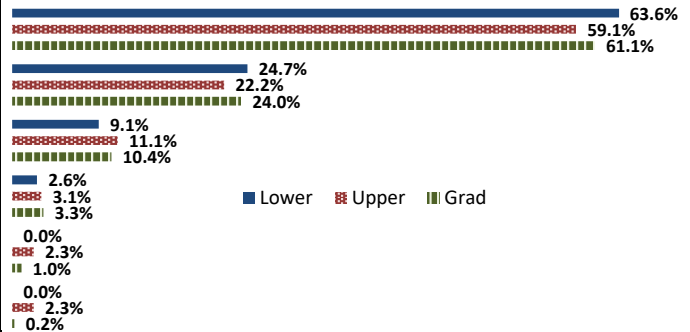
	Response by Course Level			
	Lower	Upper	Grad	Total
All (1)	75.3%	83.1%	81.0%	81.8%
Almost All (2)	24.7%	16.1%	18.1%	17.4%
More than Half (3)	0.0%	0.6%	0.6%	0.6%
Less than Half (4)	0.0%	0.2%	0.2%	0.2%
Mean	1.2	1.2	1.2	1.2
Median	1	1	1	1
Count	73	866	822	1761

3. Why did you take this course? Choose all that apply.

	Response by Course Level			
	Lower	Upper	Grad	Total
3a. The course fulfills a general education requirement.	37.0%	26.7%	21.9%	24.9%
3b. The course fulfills a requirement in my major.	59.3%	69.7%	84.5%	76.1%
3c. I have enjoyed the professor's class(es) in the past.	1.2%	4.0%	12.3%	7.7%
3d. The course will improve job/career opportunities.	22.2%	30.4%	30.2%	30.0%
3e. The course sounded interesting to me.	21.0%	9.9%	10.7%	10.7%

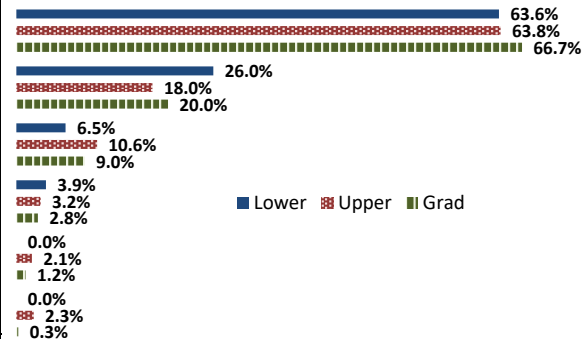
4. How would you rate the overall quality of instruction in this course?

	Response by Course Level			
	Lower	Upper	Grad	Total
Excellent (6)	63.6%	59.1%	61.1%	60.2%
Very Good (5)	24.7%	22.2%	24.0%	23.2%
Good (4)	9.1%	11.1%	10.4%	10.7%
Fair (3)	2.6%	3.1%	3.3%	3.1%
Poor (2)	0.0%	2.3%	1.0%	1.6%
Unsatisfactory (1)	0.0%	2.3%	0.2%	1.2%
Mean	5.5	5.3	5.4	5.3
Median	6	6	6	6
Count	77	886	825	1788



5. How would you rate your professor's specific contribution to you learning in this course?

	Response by Course Level			
	Lower	Upper	Grad	Total
Excellent (6)	63.6%	63.8%	66.7%	65.1%
Very Good (5)	26.0%	18.0%	20.0%	19.3%
Good (4)	6.5%	10.6%	9.0%	9.7%
Fair (3)	3.9%	3.2%	2.8%	3.1%
Poor (2)	0.0%	2.1%	1.2%	1.6%
Unsatisfactory (1)	0.0%	2.3%	0.3%	1.3%
Mean	5.5	5.3	5.5	5.4
Median	6	6	6	6
Count	77	874	810	1761



Student Opinion of Teaching Effectiveness (SOTE)- College of Natural Sciences Fall 2017 Term Summary

1. Rate your interest in the subject matter of this course before you took the class.

	Response by Course Level			
	Lower	Upper	Grad	Total
Very High (1)	20.8%	36.6%	43.8%	26.6%
High (2)	26.2%	27.1%	30.8%	26.6%
Moderately High (3)	22.7%	18.9%	19.9%	21.3%
Moderately Low (4)	11.8%	8.2%	2.1%	10.4%
Low (5)	11.9%	6.5%	2.7%	9.9%
Very Low (6)	6.6%	2.8%	0.7%	5.2%
Mean	2.9	2.3	1.9	2.7
Median	3	2	2	2
Count	7906	4391	146	12443

2. How many class sessions did you attend?

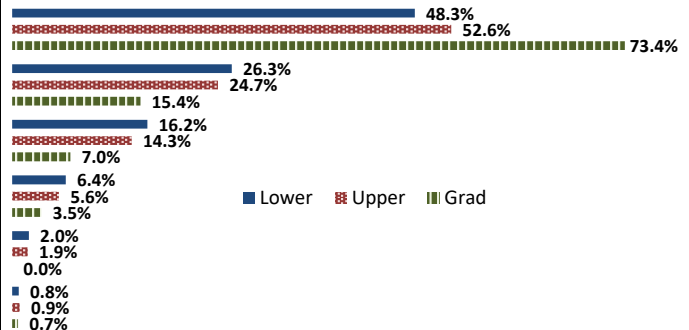
	Response by Course Level			
	Lower	Upper	Grad	Total
All (1)	69.4%	65.8%	75.2%	68.2%
Almost All (2)	28.1%	31.7%	24.8%	29.3%
More than Half (3)	2.0%	2.1%	0.0%	2.0%
Less than Half (4)	0.5%	0.4%	0.0%	0.5%
Mean	1.3	1.4	1.2	1.3
Median	1	1	1	1
Count	7921	4339	149	12409

3. Why did you take this course? Choose all that apply.

	Response by Course Level			
	Lower	Upper	Grad	Total
3a. The course fulfills a general education requirement.	58.1%	23.1%	15.9%	45.4%
3b. The course fulfills a requirement in my major.	49.6%	80.2%	84.1%	60.7%
3c. I have enjoyed the professor's class(es) in the past.	2.0%	8.7%	25.8%	4.6%
3d. The course will improve job/career opportunities.	10.7%	22.3%	32.5%	15.0%
3e. The course sounded interesting to me.	11.3%	18.6%	19.2%	13.9%

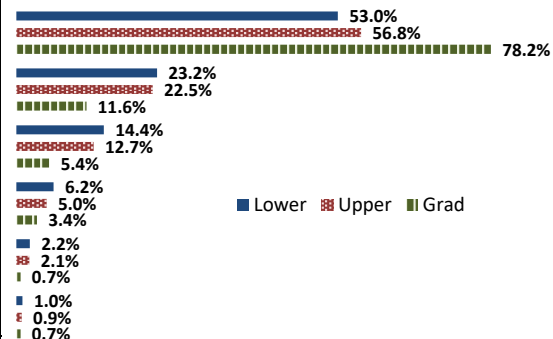
4. How would you rate the overall quality of instruction in this course?

	Response by Course Level			
	Lower	Upper	Grad	Total
Excellent (6)	48.3%	52.6%	73.4%	50.1%
Very Good (5)	26.3%	24.7%	15.4%	25.6%
Good (4)	16.2%	14.3%	7.0%	15.5%
Fair (3)	6.4%	5.6%	3.5%	6.1%
Poor (2)	2.0%	1.9%	0.0%	1.9%
Unsatisfactory (1)	0.8%	0.9%	0.7%	0.8%
Mean	5.1	5.2	5.6	5.1
Median	5	6	6	6
Count	7996	4384	143	12523



5. How would you rate your professor's specific contribution to you learning in this course?

	Response by Course Level			
	Lower	Upper	Grad	Total
Excellent (6)	53.0%	56.8%	78.2%	54.6%
Very Good (5)	23.2%	22.5%	11.6%	22.8%
Good (4)	14.4%	12.7%	5.4%	13.7%
Fair (3)	6.2%	5.0%	3.4%	5.7%
Poor (2)	2.2%	2.1%	0.7%	2.2%
Unsatisfactory (1)	1.0%	0.9%	0.7%	1.0%
Mean	5.2	5.2	5.6	5.2
Median	5	6	6	6
Count	7954	4373	147	12474



Student Opinion of Teaching Effectiveness (SOTE)- College of Social and Behavioral Sciences Fall 2017 Term Summary

1. Rate your interest in the subject matter of this course before you took the class.

	Response by Course Level			
	Lower	Upper	Grad	Total
Very High (1)	22.8%	32.1%	40.3%	28.8%
High (2)	26.3%	27.8%	25.9%	27.1%
Moderately High (3)	22.5%	19.4%	16.9%	20.5%
Moderately Low (4)	10.7%	9.1%	9.0%	9.7%
Low (5)	13.0%	7.9%	5.8%	9.8%
Very Low (6)	4.8%	3.8%	2.1%	4.1%
Mean	2.8	2.4	2.2	2.6
Median	3	2	2	2
Count	3962	5704	467	10133

2. How many class sessions did you attend?

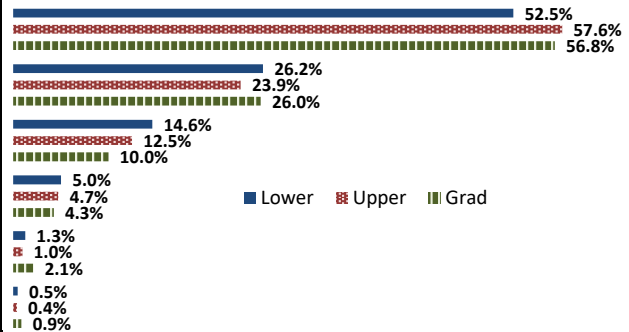
	Response by Course Level			
	Lower	Upper	Grad	Total
All (1)	51.8%	52.8%	73.8%	53.4%
Almost All (2)	43.6%	43.4%	26.2%	42.7%
More than Half (3)	3.8%	3.2%	0.0%	3.3%
Less than Half (4)	0.7%	0.6%	0.0%	0.6%
Mean	1.5	1.5	1.3	1.5
Median	1	1	1	1
Count	3964	5681	470	10115

3. Why did you take this course? Choose all that apply.

	Response by Course Level			
	Lower	Upper	Grad	Total
3a. The course fulfills a general education requirement.	68.1%	36.4%	32.1%	48.6%
3b. The course fulfills a requirement in my major.	34.2%	69.8%	80.2%	56.3%
3c. I have enjoyed the professor's class(es) in the past.	2.1%	12.1%	18.3%	8.4%
3d. The course will improve job/career opportunities.	12.0%	18.5%	29.4%	16.5%
3e. The course sounded interesting to me.	22.7%	33.4%	19.3%	28.5%

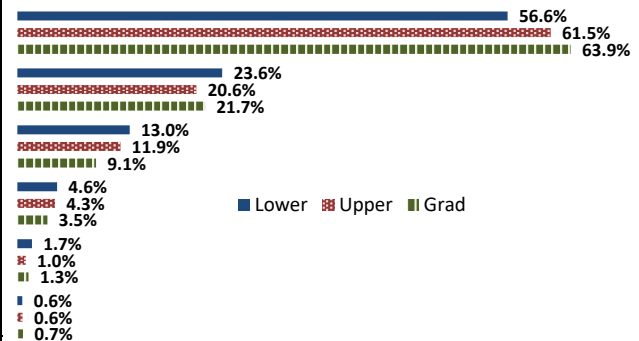
4. How would you rate the overall quality of instruction in this course?

	Response by Course Level			
	Lower	Upper	Grad	Total
Excellent (6)	52.5%	57.6%	56.8%	55.5%
Very Good (5)	26.2%	23.9%	26.0%	24.9%
Good (4)	14.6%	12.5%	10.0%	13.2%
Fair (3)	5.0%	4.7%	4.3%	4.8%
Poor (2)	1.3%	1.0%	2.1%	1.2%
Unsatisfactory (1)	0.5%	0.4%	0.9%	0.4%
Mean	5.2	5.3	5.3	5.3
Median	6	6	6	6
Count	3956	5700	470	10126



5. How would you rate your professor's specific contribution to you learning in this course?

	Response by Course Level			
	Lower	Upper	Grad	Total
Excellent (6)	56.6%	61.5%	63.9%	59.7%
Very Good (5)	23.6%	20.6%	21.7%	21.9%
Good (4)	13.0%	11.9%	9.1%	12.2%
Fair (3)	4.6%	4.3%	3.5%	4.4%
Poor (2)	1.7%	1.0%	1.3%	1.3%
Unsatisfactory (1)	0.6%	0.6%	0.7%	0.6%
Mean	5.3	5.4	5.4	5.3
Median	6	6	6	6
Count	3919	5645	462	10026



Student Opinion of Teaching Effectiveness (SOTE)- College of University Studies Fall 2017 Term Summary

1. Rate your interest in the subject matter of this course before you took the class.

	Response by Course Level			
	Lower	Upper	Grad	Total
Very High (1)	41.7%	33.3%	0.0%	38.9%
High (2)	16.7%	25.0%	0.0%	19.4%
Moderately High (3)	16.7%	0.0%	0.0%	11.1%
Moderately Low (4)	4.2%	33.3%	0.0%	13.9%
Low (5)	16.7%	8.3%	0.0%	13.9%
Very Low (6)	4.2%	0.0%	0.0%	2.8%
Mean	2.5	2.6	.	2.5
Median	2	2	.	2
Count	24	12	0	36

2. How many class sessions did you attend?

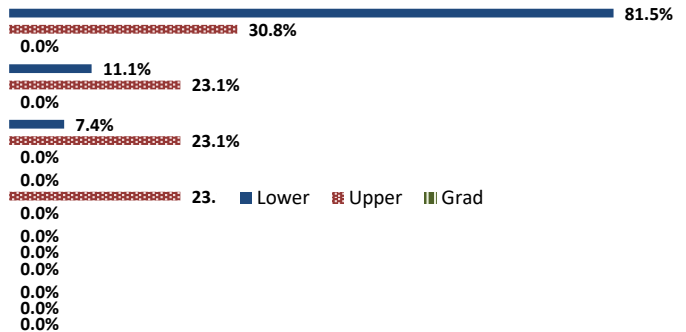
	Response by Course Level			
	Lower	Upper	Grad	Total
All (1)	48.2%	69.2%	0.0%	55.0%
Almost All (2)	48.2%	30.8%	0.0%	42.5%
More than Half (3)	3.7%	0.0%	0.0%	2.5%
Less than Half (4)	0.0%	0.0%	0.0%	0.0%
Mean	1.6	1.3	.	1.5
Median	2	1	.	1
Count	27	13	0	40

3. Why did you take this course? Choose all that apply.

	Response by Course Level			
	Lower	Upper	Grad	Total
3a. The course fulfills a general education requirement.	34.4%	62.5%	0.0%	43.8%
3b. The course fulfills a requirement in my major.	3.1%	12.5%	0.0%	6.3%
3c. I have enjoyed the professor's class(es) in the past.	0.0%	0.0%	0.0%	0.0%
3d. The course will improve job/career opportunities.	21.9%	6.3%	0.0%	16.7%
3e. The course sounded interesting to me.	6.3%	12.5%	0.0%	8.3%

4. How would you rate the overall quality of instruction in this course?

	Response by Course Level			
	Lower	Upper	Grad	Total
Excellent (6)	81.5%	30.8%	0.0%	65.0%
Very Good (5)	11.1%	23.1%	0.0%	15.0%
Good (4)	7.4%	23.1%	0.0%	12.5%
Fair (3)	0.0%	23.1%	0.0%	7.5%
Poor (2)	0.0%	0.0%	0.0%	0.0%
Unsatisfactory (1)	0.0%	0.0%	0.0%	0.0%
Mean	5.7	4.6	.	5.4
Median	6	5	.	6
Count	27	13	0	40



5. How would you rate your professor's specific contribution to you learning in this course?

	Response by Course Level			
	Lower	Upper	Grad	Total
Excellent (6)	88.0%	57.1%	0.0%	76.9%
Very Good (5)	4.0%	21.4%	0.0%	10.3%
Good (4)	4.0%	14.3%	0.0%	7.7%
Fair (3)	4.0%	7.1%	0.0%	5.1%
Poor (2)	0.0%	0.0%	0.0%	0.0%
Unsatisfactory (1)	0.0%	0.0%	0.0%	0.0%
Mean	5.8	5.3	.	5.6
Median	6	6	.	6
Count	25	14	0	39

