

California State University, San Bernardino

**CSUSB ScholarWorks**

---

Faculty Senate records

Arthur E. Nelson University Archives

---

1-15-2013

## Retention and Remediation

Office of Institutional Research

Follow this and additional works at: <https://scholarworks.lib.csusb.edu/facultysenate>

---

### Recommended Citation

Office of Institutional Research, "Retention and Remediation" (2013). *Faculty Senate records*. 63.  
<https://scholarworks.lib.csusb.edu/facultysenate/63>

This Presentation is brought to you for free and open access by the Arthur E. Nelson University Archives at CSUSB ScholarWorks. It has been accepted for inclusion in Faculty Senate records by an authorized administrator of CSUSB ScholarWorks. For more information, please contact [scholarworks@csusb.edu](mailto:scholarworks@csusb.edu).





# Retention & Remediation

Muriel C. Lopez-Wagner

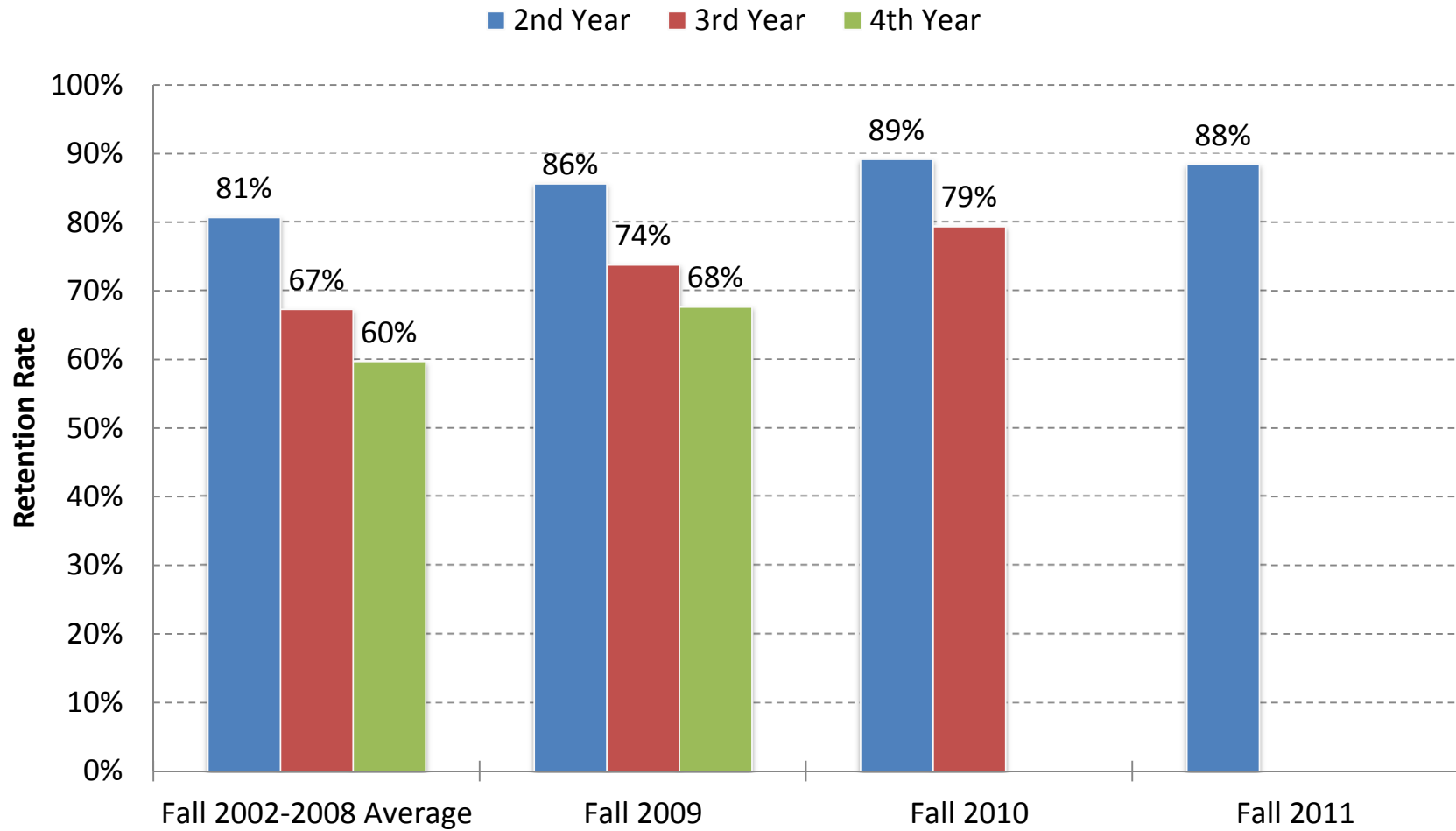
Faculty Senate

January 15, 2013

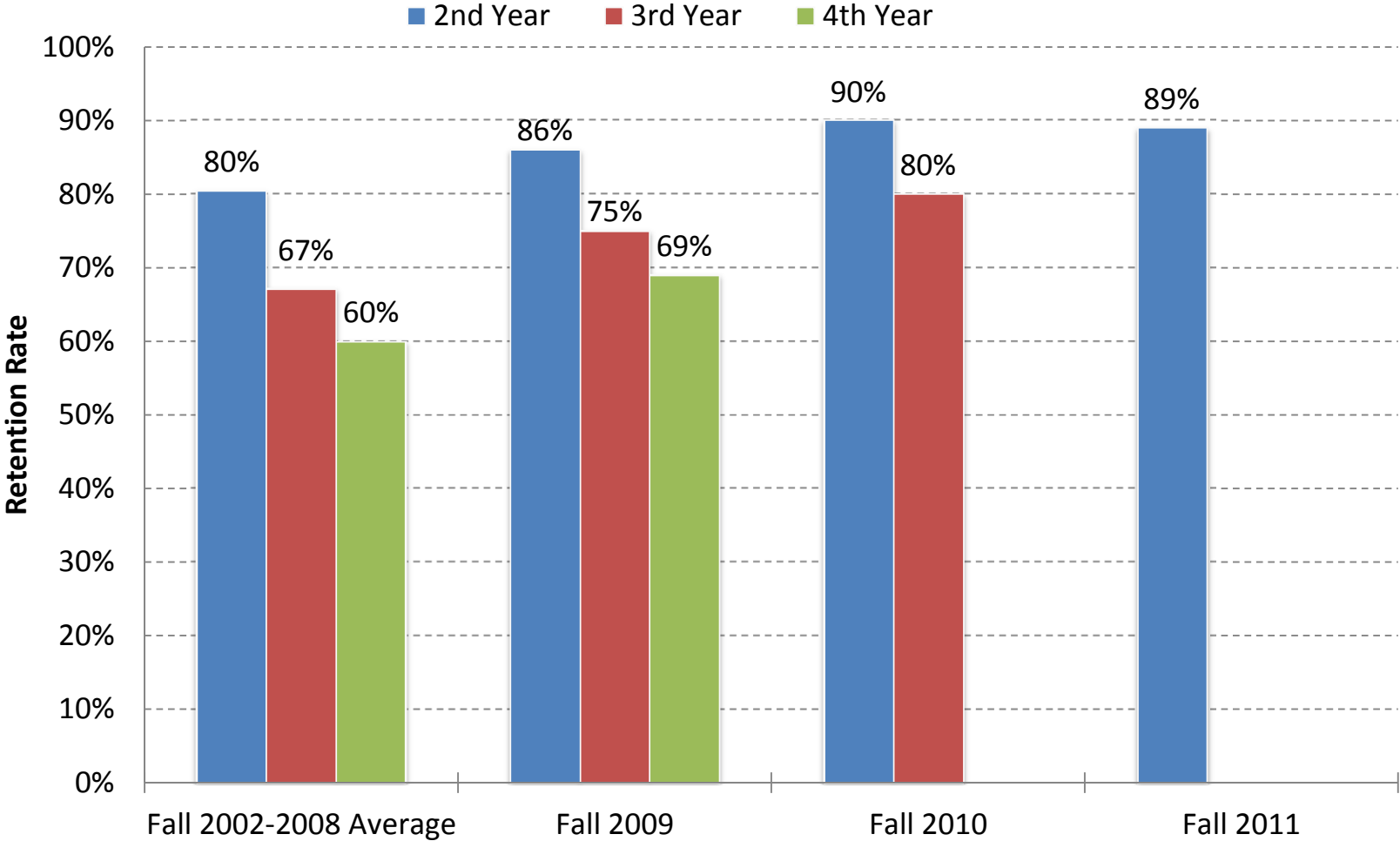
<http://ir.csusb.edu>



# Retention Rate of First-Time Full-Time Freshmen



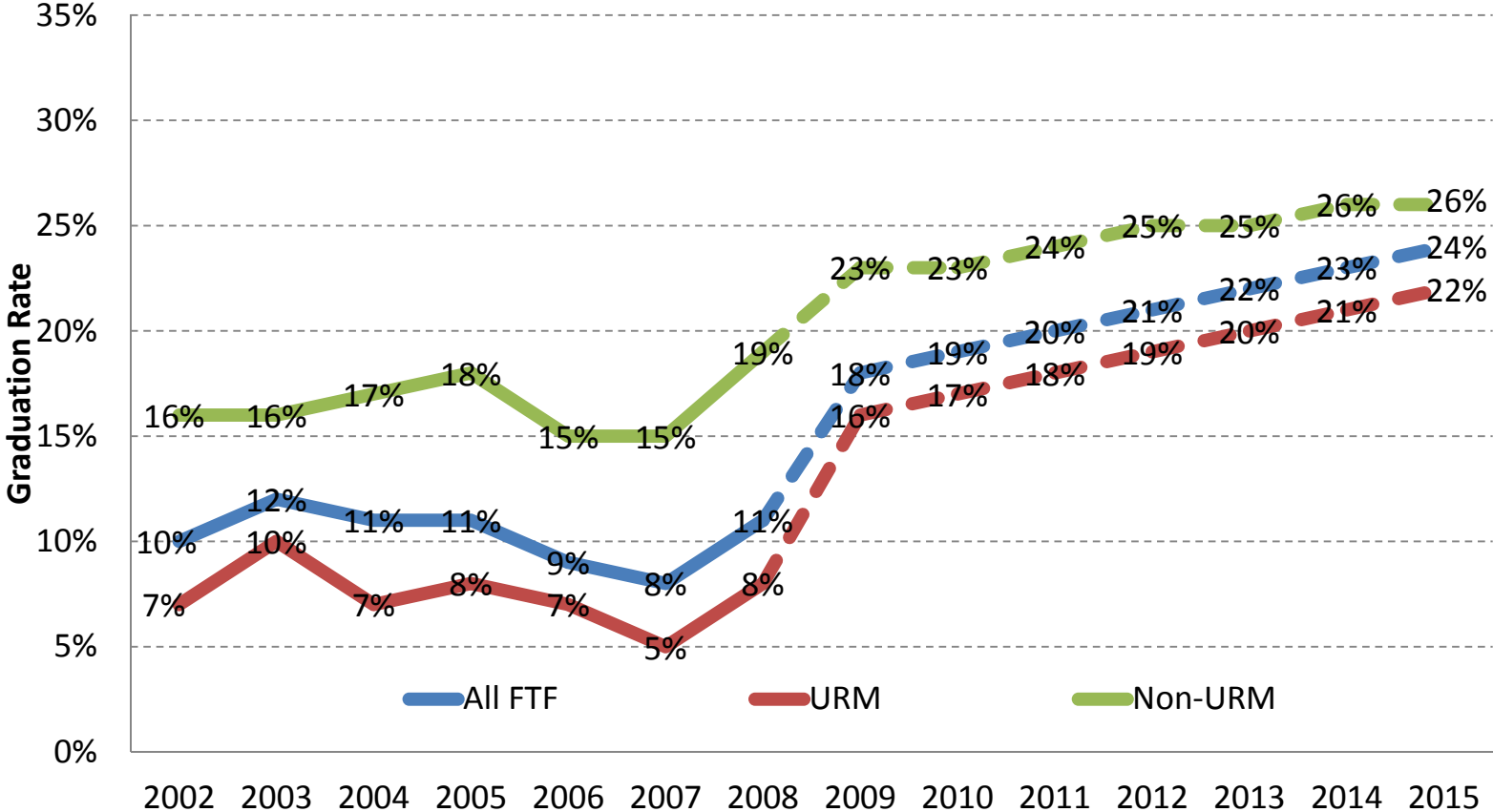
# Retention Rate of First-Time Full-Time URM Freshmen



Underrepresented Minority (URM): African American, Hispanic, Native American.

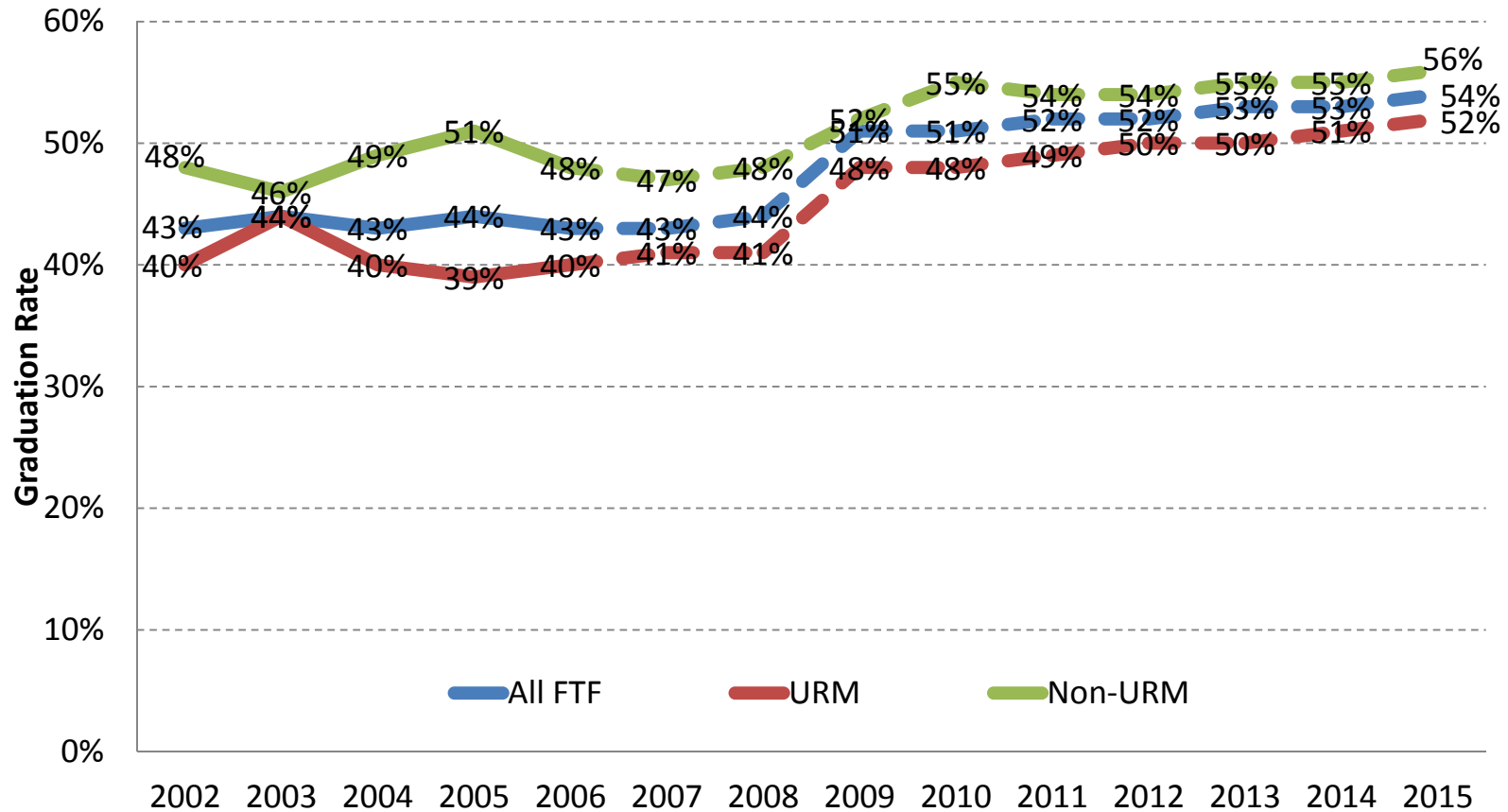
# Four Year Graduation Rate

## Actual & Projected First Time Freshmen Four Year Graduation Rate



# Six Year Graduation Rate

## Actual & Projected First Time Freshmen Six Year Graduation Rate

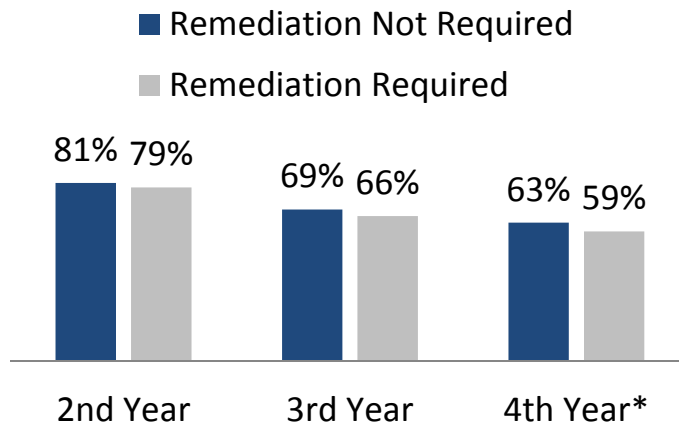


# Sample for Remediation Study

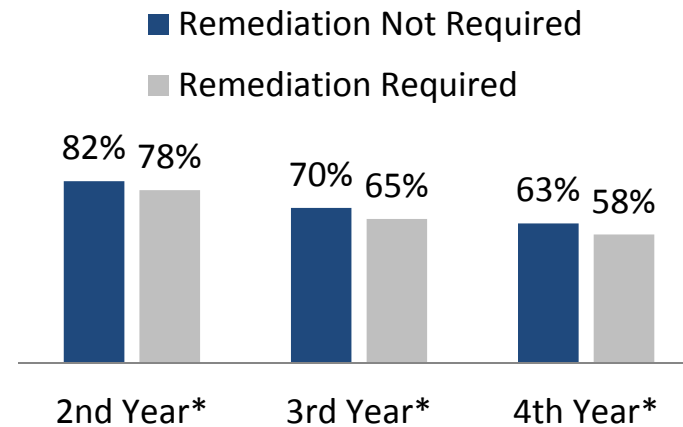
- Fall 2003-2005, 4660 FTF
- Exempt, Passed, or Required Remediation based on EPT and ELM
- Of 4660 students with remediation code, 68% required remediation
- Yes/No Remediation
- 0 Quarters, 1-5 Quarters of Remediation

# Impact on Student Retention

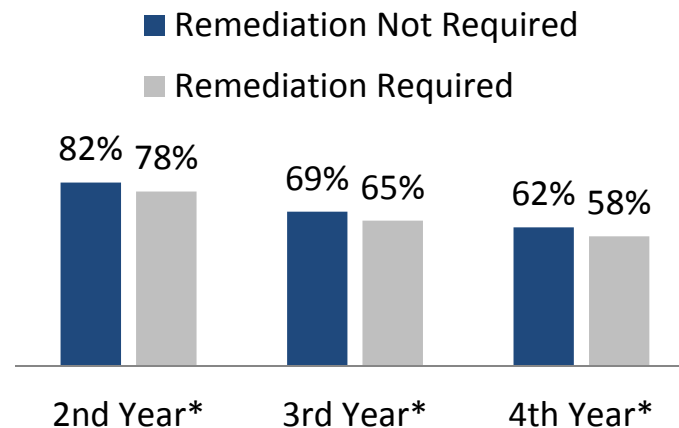
## Retention by EPT Status



## Retention by ELM Status



## Retention by EPT & ELM Status

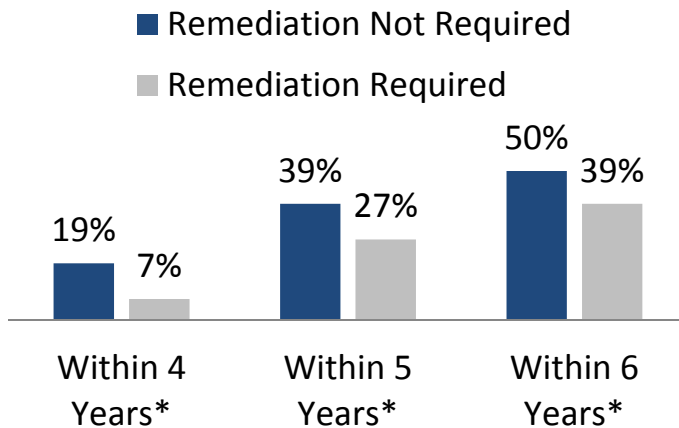


\* p<.05

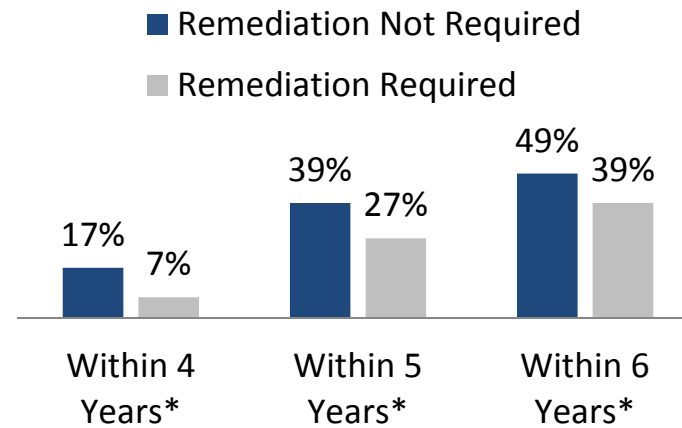


# Impact on Graduation Rates

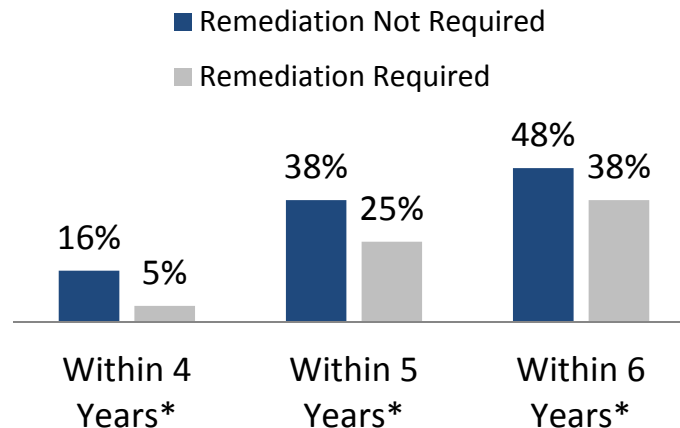
## Graduation by EPT Status



## Graduation by ELM Status



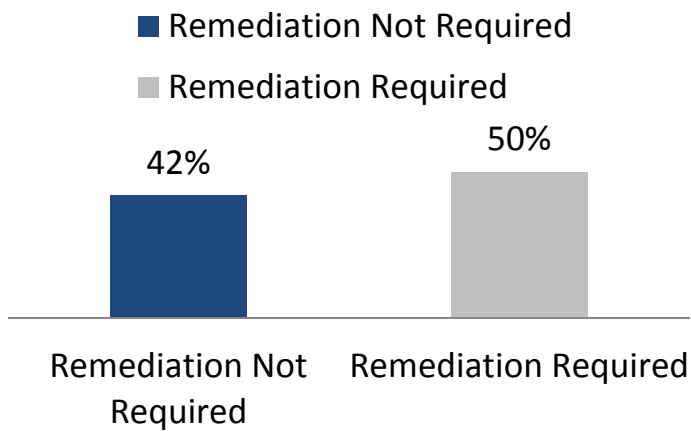
## Graduation by EPT & ELM Status



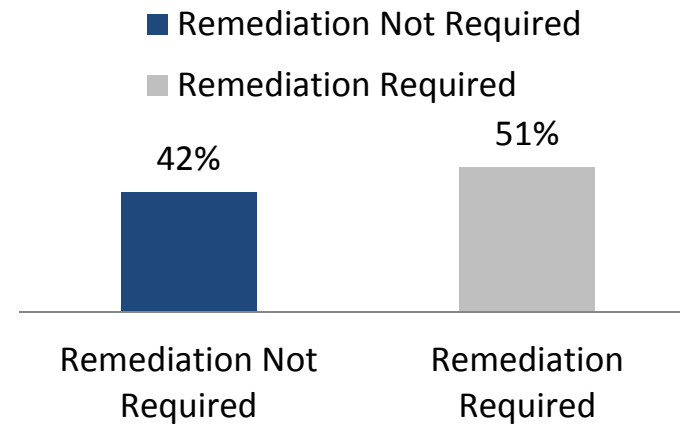
\* p<.05

# Impact on Dropout Rates

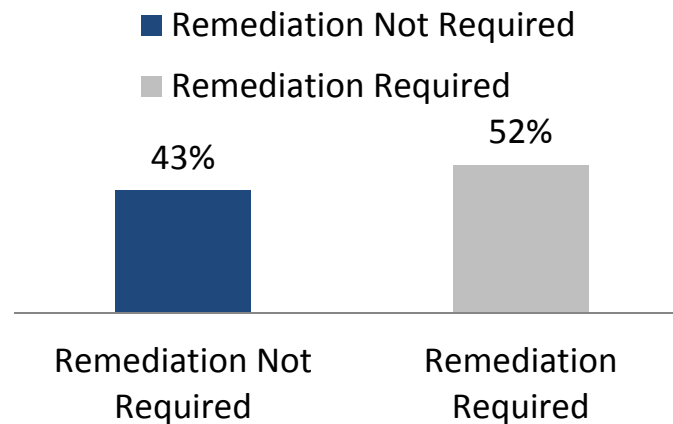
## Dropout by EPT Status\*



## Dropout by ELM Status\*

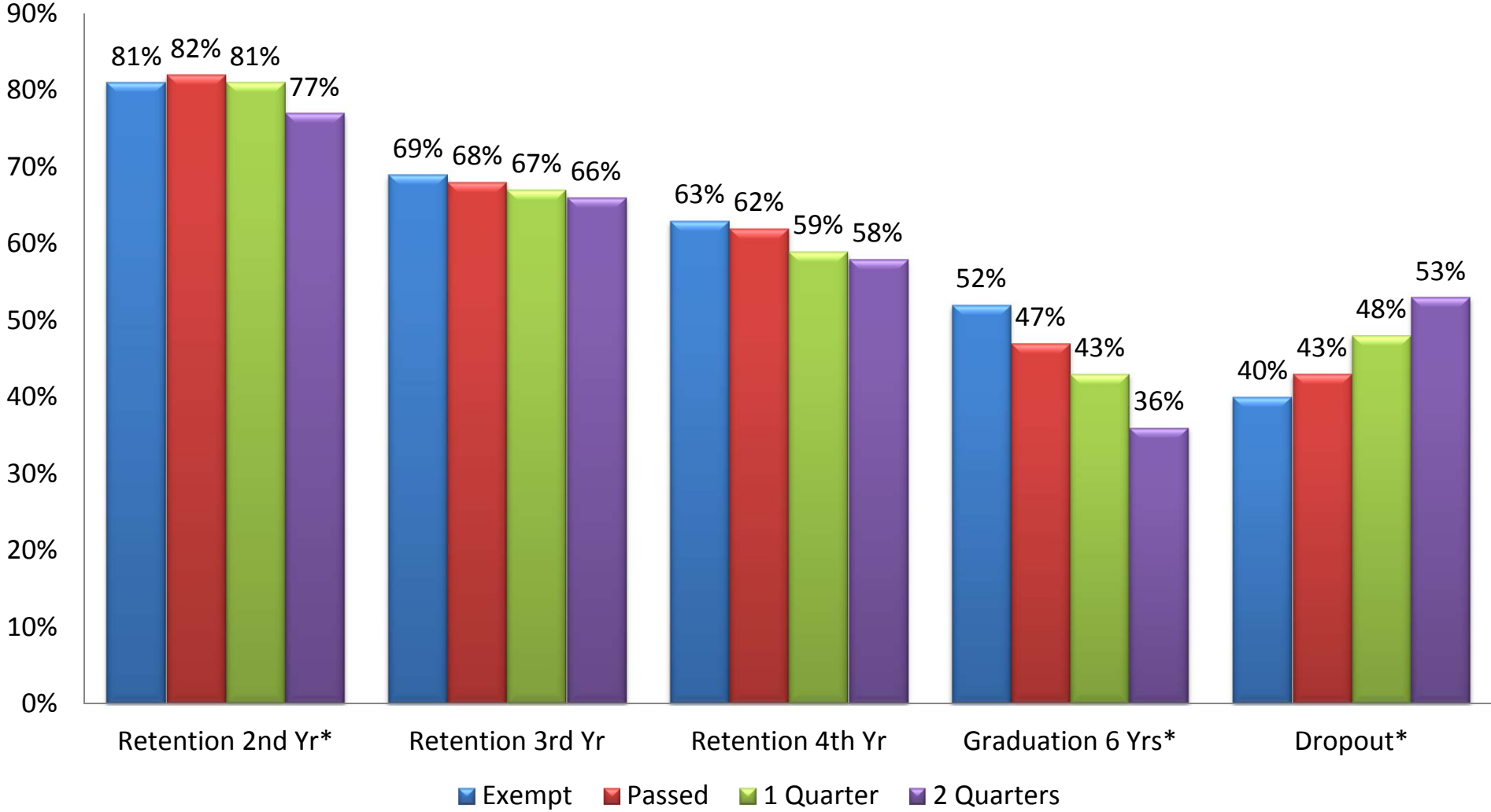


## Dropout by EPT & ELM Status\*

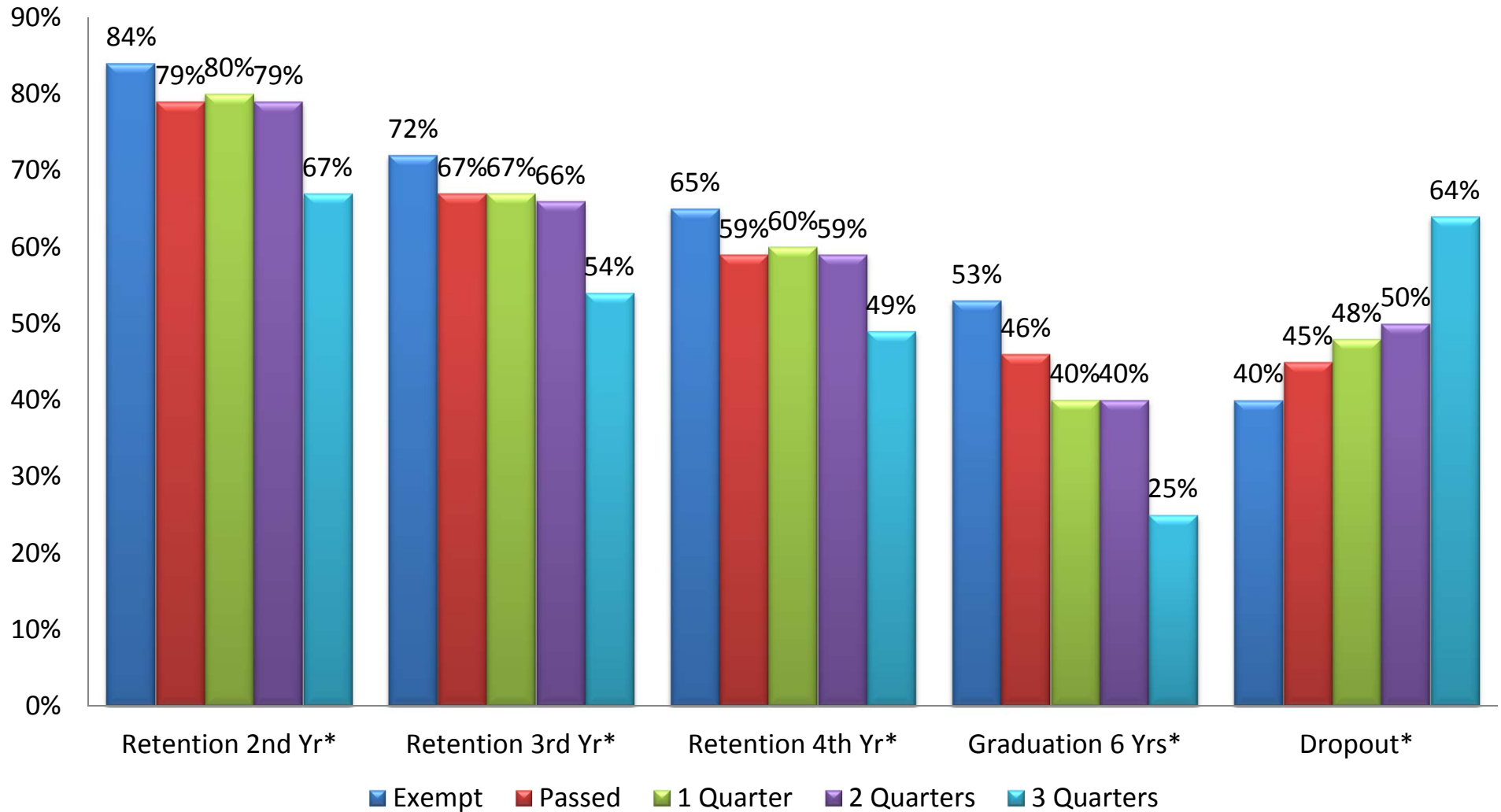


\* p<.05

# Remediation Time in English



# Remediation Time in Math



# Remediation Time in English & Math

