

California State University, San Bernardino

## CSUSB ScholarWorks

---

Coyote Chronicle (1984-)

Arthur E. Nelson University Archives

---

2-8-1984

### February 8th 1984

CSUSB

Follow this and additional works at: <https://scholarworks.lib.csusb.edu/coyote-chronicle>

---

#### Recommended Citation

CSUSB, "February 8th 1984" (1984). *Coyote Chronicle (1984-)*. 46.  
<https://scholarworks.lib.csusb.edu/coyote-chronicle/46>

This Newspaper is brought to you for free and open access by the Arthur E. Nelson University Archives at CSUSB ScholarWorks. It has been accepted for inclusion in Coyote Chronicle (1984-) by an authorized administrator of CSUSB ScholarWorks. For more information, please contact [scholarworks@csusb.edu](mailto:scholarworks@csusb.edu).



# FINANCIAL AID CAL GRANT DEADLINE IS TOMORROW

Students qualifying for Calif. Student Aid Commission grants can expect a little more money next year, and there will be more awards available-if financial aid increases proposed in Gov. Deukmejian's 84-85 budget are approved by the State Legislature.

This should be an incentive for students to

meet the financial aid application deadline which is just days away-February 9.

Financial aid offered by the Calif. Student Aid Commission includes Cal Grants, Bilingual Teacher Grants, and State Graduate Fellowships.

Cal Grants provide tuition/fee assistance to low and middle income under-

graduate students, and a living allowance for disadvantaged undergraduates. Bilingual Teacher Grants aid students enrolled in approved bilingual teacher training programs. Graduate Fellowships provide assistance for full-time graduate or professional study at either a public or an independent university in

California. For any of these grants, students must qualify on the basis of financial need.

The 1984-85 Cal Grant tuition/fee awards, under the Governor's budget, would pay a maximum of \$305 at the Calif. State Univ., \$972 at the University of Calif., and \$3,740 at independent colleges, a 10% increase over

the present awards. The Cal Grant B living allowance would be raised from \$1,100 to \$1,210.

The maximum Bilingual Teacher Grant would be \$3,816 and the maximum Graduate Fellowship, \$5,830, a 6% increase over the 83-84 awards. The number of new Commission grant awards would increase from

## Cal State Chronicle

Volume 18, Number 14

Serving Cal State, San Bernardino

February 8, 1984

### Winds Damage Buildings And Private Vehicles

by Dennis Hatcher

Severe Santa Ana winds took their toll on all of Southern California last week, and CSCSB got its share of damage.

According to Campus Police, winds ripped several camper shells from trucks in the school parking lots. Other damage occurred to cars parked at the Physical Plant, where huge sections of roof were torn off by the wind's fury. Windshields were broken and car bodies damaged as gravel and tarpaper, driven with shotgunblast force, rained upon the cars from above.

At Pfau Library, a large window panel was blown in on the Northwest corner, and several more windows were cracked. No one was injured by the flying glass, and maintenance crews quickly

covered the gaping, ground floor hole with plywood sheets. Bob Lohnes, Assistant Administrative Affairs officer, said the heavy walnut doors at that end of the library were damaged by the flying debris and would have to be replaced. Lohnes estimates the cost of wind damage on campus at \$25,000. He said the school was not liable for damage to privately-owned cars, which he estimated to number around 20.

Dr. Ted McDowell, head of the Geography department, regularly keeps record of weather conditions, including wind velocities. He stated that the highest wind velocity recorded at CSCSB was 70-74 mph, with winds typically gusting 30-60 mph.

Major Balsterholt, from

the Norton AFB weather station, explained what caused the high Santa Ana winds. "There was a large mass of cold air in the Great Basin, up around Idaho and Nevada. This cold air was a very high pressure mass. We had here, in the South, an area of unusually low pressure. The air pressure has to equalize, so the high pressure air was funneled through the mountain pass, creating the Santa Ana condition."

While the highest recorded wind speed at Norton was 45 mph, Balsterholt said it is common for areas near the pass to experience much higher velocities. Unofficial wind speeds of 90 mph had been reported in the San Bernardino area, but could not be confirmed.



Cindy Rahal and a friend fight against last week's high winds while walking to their classes.

### Student Union Offers An Array of Activities

Are you bored on Friday evenings? The Student Union has been open Friday nights since school began in September. The pub is open on a trial basis. The Union is open to student, faculty, staff, club and village use. Events which have been planned are dances, pool tournaments, weekly A.S. videos and more.

This Friday night, Feb. 10, come join us in the Student Union at 4:30 to view an Intramural Basketball game. Also, the video "Coming Home" will be shown at 6:30 in the Pub. As a special event this week Morongo is presenting a semi-formal Valentine's dance sponsored by Serrano Village. The

dance will be held in the SUMP from 9-1 a.m.

#### WEEKLY COFFEE HOUSES

Every Wednesday night at 8 p.m. the Student Union sponsors a Coffee House and Jam Session in the Union lounge or pub. Most Wednesday evenings have proven to be successful with participation from many CSCSB students.

At every Coffee House the Union has provided free refreshments. Come join us on Wednesday nights as a participant or audience. If you are interested in playing contact a night manager or Sherri Deutchman at the continued on page 7



Black Student Union president Bridget Copeland and other members of the Black History Week committee discuss the agenda for the late February event.

Stress  
page 2

Winterfest  
page 3

Record Rack  
page 6

Counseling  
Center  
page 8



# Conquer Stress Before It Conquers You

by Carol Leish

You realize that you have a test tomorrow in English Lit. and that you must stay awake in order to study. You get caffeine from coffee or you may smoke in order to relax.

How can you manage in order to handle school, home, and your social life without going crazy?

Stress management is for you! Conquer stress instead of letting stress conquer you!

On February 1 at noon and 8 p.m. in the Student Union, Steve Coffee and Veda Hunn, Psychology interns in the Cal State Counseling Center, gave a discussion on "Stress Management." The talk discussed the symptoms of stress, a holistic approach to stress management, ways to cope with stress, how thoughts affect stress and different stress personality type levels.

Steve Coffee said that stress is "an instinctive response, necessary for life threatening situations, such as being in the street as a speeding car almost hits you." He said that your body reacts in order to get out of that predicament to safety. According to Steve Coffee, "Chronic stress means stress

is caused from things, such as school and midterms."

In stressful situations, Steve Coffee said that the pupils dilate and that the muscles tense up. Adrenalin gives the body more energy. He said, "Sugar and coffee keeps the energy level artificially high," and continued, "If you don't like what you are doing, you get stress."

A holistic approach to stress is encouraged by Steve Coffee and Veda Hunn. This includes: a balanced diet, relaxation, psychological awareness, exercise and time management. By taking this approach, you will have the skills needed to take personal responsibility and control over how events in life affect you mentally and physically.

Other ways to cope with stress were also mentioned. Establishing a good support system of friends and family members, accepting what you cannot change: changing your attitude if necessary, planning some free time every day and repeating statements, such as "I like me," or "I'm glad to be me." Following these guidelines will help you to put you on your way to conquering and dealing with stress.

How thoughts affect stress goes into: how we perceive an event that has occurred and how we interpret the event. This leads to a reaction of behavior and emotion to what occurred. According to Veda Hunn, "Our self talk (interpretation) of an event include some oughts, shoulds, and nevers. Inaccurate information can lead to an emotional disturbance. She also said that, "according to Albert Ellis, developer of Rational Emotion Therapy, Emotion is the result of self-talk. We make perceptions and interpretations that are real."

"Instead of assuming the worst," according to Ellis, "we should check out the rational thought with an action. An example would be: If your boss is angry at you, you may realize there is nothing wrong at 8 in the morning. With this interpretation of the matter, you would not get emotionally bothered about the matter."

Veda Hunn discussed the 4 stress personality level types. Where would you classify yourself? 1 is the critical judge; who is a perfectionist with a low self esteem. 2 is the pleaser, who is passive



Besides teaching, Dr. Martha Kazlo is a full time counselor at the counseling center located in PS 227.

and can't say no and is afraid of being alone. 3 is the sabortooth, who is irritable

and nasty. 4 is the striver, what you are depends on what you do.

## News Briefs

### Baha'i Scholarship

Applications are now being accepted for the 2nd Annual Roy Brooks Memorial Scholarship Award by the Cal State Baha'i College Club. The scholarship, in the amount of one-hundred dollars, is available to any student currently registered full-time, undergraduate status.

An essay on the theme "How does one reconcile racial pride with the ideal of human brotherhood" must be submitted no later than February 10 at the Student Union, Room 32. Applications may be picked up there also.

Roy Brooks, long-time resident of Rialto graduated from Cal State in 1980. A community activist, he followed the Baha'i concept of "One Planet, One People, Please" with vigor, as demonstrated by the many services he gave to individuals and the great San Bernardino area. He was a member of American Legion Post 710 San Bernardino and served on the Spiritual Assembly of the Baha'is of Rialto. The scholarship was initiated last year by the Cal State Baha'i College Club and the San Bernardino Baha'i Community.

### The Evening Office Open House

Are you a night student wondering when you can

file your grad check, submit a transcript or change your major? The Evening Office is the place most of your administrative tasks can be handled.

To introduce new people to our office and to reacquaint the seasoned student, the Evening Office is hosting an OPEN HOUSE. It will be held Monday, February 13th and Tuesday, February 14th from 5:30 p.m. to 8:00 p.m. in PL-107, the Evening Office. We will have free coffee, punch and cookies to entice you to come and learn what services are available to you at night.

Evening Office offers: dropping courses, adding courses, class schedules, parking decals, GRE/GMAT/CBEST/ booklets, information about college regulations, referrals, waivers of college regulations and much more.

### GLU Valentine Party and Dance

The Gay and Lesbian Union is sponsoring their third annual Valentine Party and Dance, Saturday February 11. The event will be in the Student Union SUMP from 8 p.m. to 1 a.m. Admission is \$3.00 per person and includes free munchies and door prize chances. Entertainment will include a piano bar, disco, and a dancing cupid. Everyone is welcome.

### German Club

The CSCSB German Club will be sponsoring two events this coming week.

The first will be a slide presentation on the topic, "Survey of German Art from Medieval Times to the Present," held in PL 211 on Wed., Feb. 8, from 4-6 p.m.

The second is a meeting at the home of Ms. Miranda Munson on Saturday, February 11, at 7:30 p.m. A special program on "New Wave-Modern German Music" will be followed with games, fun, singing and refreshments.

Everyone is welcome at both meetings. For more information, contact Jeff Espinosa at 882-4525, or Ms. Munson at 887-7445.

### Winter Enrollment Up Over the Same Term in 1983

As of the winter quarter census date, 5,144 students were enrolled which is a 5.37% increase over the same term a year earlier. The winter count, although down 306 from last fall, is the second highest enrollment in the college history. It is exceeded only by fall 1983 when a new high of 5,450 students was chalked up. Traditionally student enrollment drops off during the year from the fall quarter highs.

The full-time equivalent (FTE) for winter quarter

stands at 3,919.9 students. The FTE is important for budgetary reasons, as the institution's allocation each year is based upon its FTE figures. The winter FTE count is 5.88 % higher than winter 1983, although it is 4.94% below the all-time high of 4,123.7 set in the fall 1983 term.

### Income Tax Aid Begins Feb. 7

Free volunteer assistance with income tax forms will be provided by the Accounting Assn. from 4-6 p.m. Tuesdays and Wednesdays, Feb. 7-March 7. All sessions will be in the Lower Commons except for Wednesday, Feb. 22. The assistance will be in upper Commons Room 219 that afternoon.

The student volunteers from the association who will be providing assistance have completed three training sessions. John Scribner (Acct, and Finance) is the faculty advisor. The service is provided on a walk-in basis.

The student will help fill out federal forms 1040, 1040 a, 1040 EZ, as well as Calif. state forms 540 and 540 A.

### Pre-Marital Sex-Avoiding the Pitfalls

Dave Wilson will be speaking on pre-marital sex this Thursday, Feb. 9 at 6:30 p.m. in the Lower Commons. Wilson is a graduate of Ball State University in Indiana

where he was a quarterback for 4 years; he turned down a pro contract with the Cincinnati Bengals to work with Athletes in Action.

Everyone is invited!

Sponsored by Campus Crusade For Christ.

### Are You Thinking About Becoming A Teacher?

Are you interested in finding out more about teaching as a career? Do you have lots of questions about teaching and credentials? Are you confused by the requirements you must meet to enter the credential program? Well, there's good news for those of you that answered yes to any of those questions. The staff of the Career Planning and Placement Center is sponsoring a workshop designed to answer all those questions and more.

"So You Think You Want To Be A Teacher" is a workshop that will be held on Wed., Feb. 15 from 2-4 p.m. in the Student Union Senate Chambers. There will be faculty and staff from the School of Education as well as a Career Counselor and educational placement advisor from the Career Planning and Placement Center available. Be sure to take advantage of this excellent opportunity to get all your questions answered at once.



## CSOWC Concentrates on Women's Issues

by Linda Riddell

"...Instead of females attempting to be like males, I feel that females would achieve so much more if we strive for high positions and contentment with ourselves by keeping our femininity!" stated Lee Ann Overstreet, President and founder of the new club charter on campus. Cal State's Organization for College Women, makes this statement in an earnest plea to arouse interest concerning awareness of women's issues.

Overstreet states that the objective of the CSOWC "is to bring the campus community, as well as the outlying communities, closer to Cal State and to awaken these communities to the possibilities open to women." The focus of the CSOWC as an organization is to become a source of substantial information for the professional woman.

The organization appears to be extremely serious in their commitment to reach their goals. Discussion topics include "Awareness of Opportunity" and seminars and discussion on "Women and Birth Control," "Sexual Harassment," "Women and Politics," "Health and Beauty" and "Spring Color" presentations.

CSOWC strongly urges

anyone interested in women's issues, including men, to gather with them to share your ideas and input.

Also included on the CSOWC's agenda are fund raising events such as donut sales (Feb. 8) and a dance scheduled for March 8 which will be co-sponsored with Associated Students.

The organization is also preparing events to coincide with the National Women's Week during the Spring quarter. And, the CSOWC will also sponsor the annual blood-drive on campus Feb. 15.

For those of you who feel this might be the channel you need to become an integral part of Cal State and achieve in the San Bernardino community itself, meetings are held at 12 noon in the Student Union Senate Chambers on approximately every third Tuesday. Or you may leave your name, address and phone number with the Activities Office on campus at SS 122 or call 887-7407.

Membership is open to students, alumni, faculty, staff, administrators and individuals from surrounding communities. Fees are charged according to categories: Active \$3; Associate \$15; Benefactor \$25; and Golden \$50.



Activities Advisor Clare Sharafinski and A.S. Activities Chair Dexter Walsh encourage everyone to dress country for Winterfest.

## Country Theme Set For Winterfest

There will be an all day party in the Student Union on Thursday, February 9, in celebration of the Annual Winterfest. The theme for this year's winterfest is "Country Jamboree," and it's bound to be a rootin', tootin', ho down.

Behind this year's winterfest are: Sherri Deutchmen, Student Union Co-ordinator; Clare Sharafinski, Activities Advisor; and Dexter Wash, A.S. Activities Director. They have worked with the clubs and A.S. to make this year's winterfest one of the best

ever. The entire Student Union has been booked for the occasion and there will be many exciting things going on. "We wanted a theme that everyone could really get into," said Dexter Wash. "Quite a few clubs have already shown their participation by signing up for booths to sell all kinds of foods and goodies."

There will be plenty of activities at winterfest as well. There will be a jail where you can pay to have a friend (or enemy) put behind bars by the winterfest sherriff. There will also be a

marriage booth, country store and as an extra added attraction, A.S. is planning on having hay rides.

This year's winterfest is also a celebration of our Student Union's 6th birthday. Sherri Deutchman is planning on having lots of goodies including an 8 foot sandwich to help celebrate.

A.S. invites all campus clubs to participate in the winterfest and birthday celebration. Prizes will be awarded to those club booths which most closely follow the

continued on page 9



### BOD

Money was the key subject for this week's BOD meeting. Topping the list was an additional allocation of \$690 to the BSU earmarked for Black History Week. When added to an earlier allocation of \$750 by the BOD and \$160 by the Committee for Clubs the total comes to \$1600. This money is to be used to sponsor activities and speakers. Among the scheduled speakers is Yvonne Braithwaite-Burke.

Next on the list was a \$500 allocation to the Committee for Women's History Week. An additional \$500 was made available for speakers if other college funding could be found.

Low man on the totem pole was the Veterans Office. They received \$25 for an open house.

### BOD Agenda

The A.S. Board of Directors meets on Wednesdays from 2-4 p.m. in the Student Union Senate Chambers. A few of the items up for discussion in the Feb. 8 meeting include:

A request for \$1,000 to go to the Health Fair Expo.

A \$200 request for refreshments to be provided during the Family Living Series.

A withdrawal of \$1500 from the Publications Board in light of revenues exceeding the anticipated income.

Students are welcomed to the BOD meetings. If you have any items which you'd like included on future agendas, contact Steve Winker, A.S. Vice President, at 887-7494.

### CSSA

The California State Student Association (CSSA) has been in existence since 1959 and has represented students on hundreds and hundreds of issues. Foreign language requirements, student service fees, and on-campus storage of hazardous wastes are a few of the most recent issues CSSA has dealt with.

Who decides what issues CSSA should consider? Your Associated Students representative has this responsibility. Ultimately this representative is to communicate the desires and needs of the student. Disappointingly, student input in the past has been minimal.

It is hoped that this column will stimulate student interest and allow yet another avenue for students to participate in state and local affairs! If you have any suggestions or concerns, please direct them to Ken Whitson, Legislative Director for the Associated Students. We need your input!!!

### Did You Know?

A vital segment of student life here at CSCSB is planned by the Activities Committee. Under the leadership and direction of Dexter Wash, the new A.S. Activities Director, and his assistant, Mike Page, the committee organizes events with a budget of \$2,400, from the 1983-84 school year. These funds are used for dances (with the special attention of Ron Skelton as the Dance Committee Chair) and the bands of dj's provided, as well as the movies brought to campus (under the "watchful eye" of Jon Gray, chairman of the committee for films.) In addition, the Activities Committee is responsible for such special events as the upcoming Winterfest and Talent Show, as well as the two theme dances coming soon: Sadie Hawkins and Valentines.

A.S. activities are planned for the enjoyment of Cal State students. Make a point of getting in on some of the events which your A.S. fees help provide! Also, your input is welcomed by the Activities Committee-stop by the A.S. Activities Office

## Cal State Jamboree

### Winterfest

Thursday, Feb. 9

11 a.m.-afternoon

Student Union

Club Booths: Food, Games & More!

### Sadie Hawkins Dance

Thursday, Feb. 9

9 p.m.-1 a.m.

SUMP



### Girls!

Grab your guys and come on down. We'll have a hoot'n good time!

Students w/ CSCSB  
ID 50¢ Non-CSCSB  
\$1

FREE

## Movie: "Coming Home"

Wednesday & Thursday  
10 a.m. Matinee  
8 p.m. Showing  
SU Pub or Lou



Plan Now For The  
Valentine's Dance  
Tuesday, February 14  
9 p.m.-1 a.m.  
Students w/ CSCSB  
ID 50¢  
Non-CSCSB  
Students \$1.00



# CSMA Takes to the Road

by Greg Timpany

The ultimate goal of most college students is to get a respectable, well paying job after graduation. Members of the Cal State Marketing Association are no different. Over the weekend of Jan. 26-28 a contingent of seven CSMA members attended the Western Region Student Careers Conference, sponsored by the American Marketing Association (AMA). The conference was held at the Anaheim Marriot, and was hosted by the Collegiate AMA Chapter of the University of Southern California.

Registration began on Thursday night, Jan. 26 and

was followed by a career reception. The reception gave students a chance to talk with the companies who would be holding interviews over the course of the weekend. After the reception students ventured out to Orange County nightclubs.

The real action began on Friday morning. The day was started with the usual pep rally by conference officials. The real nitty-gritty began with a move into the concurrent sessions. Topics covered included Sales Management, Advertising and Promotions, Product and Brand Management, Physical Distribution, and Service

**Marketing.** These sessions were led by members of the business and academic communities. There were executives from several Southern California Companies including Carnation, The Broadway, and Security Pacific Bank.

After lunch, concurrent sessions dealing with resumes and interviewing were started. This was followed by a panel discussion featuring recent graduates who had entered the business world. This was followed by a rash of parties and many more excursions into the night. There is one nightclub in Anaheim that

everyone should visit. The place is known as Crackers. It is very hard not to have a good time at Crackers, even the CSMA's fearless leader Mitch Slagerman, had a good time, despite his two left feet.

Everyone in attendance at the conference looked a little tired on Saturday morning. After consuming mass quantities of coffee, orange juice, and sweet rolls the conventioners carried on. Topics on Saturday included "Winning the Salary Game," "How to Find Jobs When Jobs Are Hard To Find," and "The Marketing Approach to Job Finding." After a less than

rewarding afternoon session the conference ended with an unappealing banquet. A word to the wise, beware of convention food!

On a whole the conference was viewed as a success by those who attended. The CSMA members who participated were rewarded with an overabundance of pertinent information. A special CSMA thank-you goes out to April Duke who kept the group laughing endlessly with her many off color jokes. As an ending note, if you are interested in personal and career growth, check out the CSMA.

## BMC Hot Dog Sale Successful

*by Joe Celentano VP/BMC*

The Business Management Club (BMC) had another successful hot dog sale on Jan. 23 in front of the Pfau Library, bringing in almost \$75. The cold chill in the air, the aroma of cooking hot dogs and chile, or the "hungries" were the primary ingredients for the sale going so well.

for our success, and the club would like to thank those who helped participate in the eating, munching out, and devouring," stated BMC Vice President Joe Celentano.

Then too there were the club members who donated their time and efforts to insure all would go well by standing in the cold "hawking" the wares of the BMC. Accolades go to Al Knecht, president; Cathy Bright, Mitch Imoto, Dave Tremillo, Chris Martin, Anthony Lacey, and Shelly Cervantez.

"One more note of thanks should go to those members who worked hard 'behind-the-scenes.' They made the arrangements for permission, location, equipment, purchases, and much of the leg work it takes to set up this type of function." A special thanks also to Anthony Lacey and Shelly Cervantez, Celentano concluded.

***"...the club would like to thank those who helped participate in the eating, munching out, and devouring..."***

"Of course there were the 'customers,' the major factor

## BIOLOGICAL/PHYSICAL SCIENCES . . .

**Representatives from the Peace Corps will be at the South Entrance of Cal State San Bernardino's Plau Library on February 21 and 22. Think about it, YOU can make a difference..by joining the Peace Corps!**

# You're Needed All Over the World.

Ask Peace Corps volunteers why they are using their Science major, minor, or aptitude in health clinics and classrooms in Malaysia. Why do they use them in fish pond culture projects and experimental farms in Western Samoa? They'll tell you their ingenuity and flexibility are as important as their degrees. Ask them why Peace Corps is the roughest job you'll ever love.

# PEACE CORPS

*Show Your Love*  
(or whatever)

*With a Valentine Message printed right here  
in the paper on February 14th.*

**Just fill in the grid with one letter or space in each box and bring it to us along with 50¢.**  
***(exact change only)***

[illegible]

Q.

*Por que no me queres?*

①

Harold Burr,

Hale yea, hale Kansas,  
look the dog.

Penalty

*M. M. M.*

Meet you at Mojave's trash room at  
Park.

*A. A. A.*

**MESSAGES WILL BE ACCEPTED:**

WEDNESDAY 10-4 at the A.S. OFFICE  
THURSDAY 1-5 at the CHRONICLE ROOM  
FRIDAY 10-2 at the CHRONICLE ROOM

*The Chronicle reserves the right to refuse any ad, so please keep your receipt for a refund if your ad does not appear in the paper.*

Flowers by Margaret

Valentine's Day  
Feb 14

# We Can Send Flowers Anywhere!

228 E. 40th St.  
(Next to McDonalds)

886-7071  
8:00 a.m. - 7:00 a.m.



# HEALTH CORNER

## Home Remedies

*What are some things I can do to help myself if I become ill when no medical help is available or I can't get a doctor's appointment immediately?*

This would vary according to the ailment. There are many over-the-counter and home remedies that will keep you comfortable until medical help is available. For example:

Upset Stomach or Diarrhea. For nausea you of course will need fluids so sipping Seven-Up, Coca Cola, or popsicles (not fruit bars) is a good way to soothe nausea. Also, you can purchase without a prescription a product called Dramamine 50 mg or generically Dimenhydrinate. It works quite well if you are not vomiting severely and can keep it down. For cramping and diarrhea, Donnagel is available over the counter and is a combination of a smooth muscle relaxant and an adsorbent to control cramping and diarrhea. Pepto Bismol is also excellent for most kinds of diarrhea.

For head colds, runny nose, and head cold symptoms you would want to find a good decongestant such as Sudafed, Actifed, Coricidin D, Chlortrimeton D or Drixoral which was just recently released for non-prescription use, has an 8-12 hour action, and in most

cases does not cause drowsiness. It is also wise to force fluids, especially fruit juices.

For chest congestion you can use steam inhalation being very careful not to get too close and burn yourself, or a steamy shower is another method. Any cough preparation that contains an expectorant and a cough suppressant is helpful. A flat pan of water in your room will add humidity by evaporation and therefore be helpful. A good home remedy for a cough is lemon juice and honey which can probably be found in the Commons.

Sore throats can be eased by gargling with warm salt water. Any of the anesthetic throat lozenges and sprays that are available over the counter will anesthetize the throat and be soothing. Aspirin or Tylenol (acetaminophen) is also useful for any kind of pain.

Toothaches can be soothed until dental help can be reached by swishing the mouth with warm salt water or a solution of half water and half hydrogen peroxide 3%. There is also a product called Orabase with Benzocain that will numb and adhere to the painful tooth or canker sore in the mouth. Again, aspirin or Tylenol will help relieve pain.

Headaches can often be helped by a warm compress over the eyes. Also helpful

would be to take two aspirin or two Tylenol (or three aspirin or three Tylenol which is equivalent to Tylenol extra strength or aspirin maximum strength) Followed by lying down in a quiet, preferably darkened room for 20 to 30 minutes.

For burns apply ice to the burn area immediately. Keep ice on until burning pain ceases or medical help can be obtained. This can prevent blistering.

Sunburn. If you have overdone your sun exposure at the beach or on the ski slopes, a cool, not cold, shower using no soap and vinegar rinse can be very soothing and help take the sting out of sunburn.

Insect stings can be relieved temporarily by icing to prevent swelling. An itchy rash can be soothed by a baking soda and water soak in the tub. Also, any product containing an antihistamine will help such as Chlor-trimeton 4.8 or 12 mg which is now available without a prescription.

The health center personnel are aware you as students don't feel you have time to be ill. We hope our self-help suggestions will be useful when we are not available. But it is our goal to help you maintain good health and we are available to administer to your health needs with friendly, kind and supportive medical help.



*Dr. John Miller of the Health Center demonstrates how quickly a blood pressure check can be administered.*

## SPARING FIVE MINUTES MIGHT SAVE YOUR LIFE

Have you ever wondered what your blood pressure was, but felt you didn't have the time to find out? Or perhaps you just have some basic questions about blood pressure in general? Monday, February 13, is your chance to find out. The Health Center has made it convenient for you by arranging to have registered nurses from on and off-campus to take your blood pressure. They will be located in different areas on campus: Cafeteria entrance, 11:30-1:30; Student Union Lounge: 11:30-2:00; Student Services Atrium, 2:00-4:00; South Entrance to Library, 1-3, 4-5.

About one in four Americans has high blood pressure, and more than half

of these have high blood pressure that is very serious. This disease is dangerous because it often leads silently, but directly, to conditions that often kill or cripple: heart attack, stroke, or kidney disease.

High blood pressure is especially dangerous because it has no clear signs. A person can have it and not even know it. That's why it is so important for people to get their blood pressure checked regularly.

The entire campus community is encouraged to take five minutes out of their day to take advantage of this very special service. It may be the most important five minutes you spend that day.

## Have a Heart and Give Blood

by Dorinda Thurman

The Health Center and Cal State's Organization for College Women will co-sponsor a Blood Drive on Wednesday, February 15. Local Blood Bank staff will be assisting donors in the waiting room of the Health Center from 10-3 p.m.

"Since the purpose of the Blood Drive is to replenish supplies in the campus Blood Reserve Fund, we need your help. This fund was

established so that there would always be a supply of blood available for any student, faculty or staff member, and their dependents," said Dr. James Savage.

Donating blood is a very simple process. Anyone who is in good health, who weighs over 110 pounds, and is between the age of 18 and 65, can donate blood. Please do not fast before your donation, and allow about 45 minutes

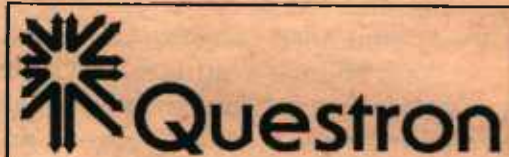
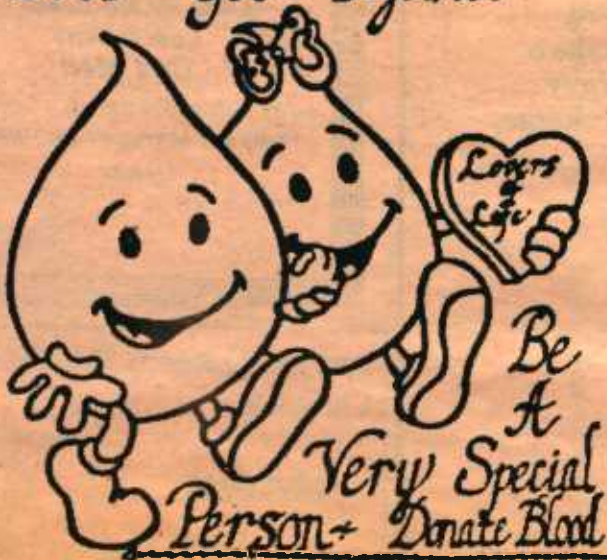
for registration, donating and light refreshments.

Cal State's Organization for College Women will be donating \$10 cash prizes to three lucky donors whose names will be drawn after the Blood Drive. You will also see some of their members with special t-shirts on that day. They will be encouraging all of you to stop by the Health Center and donate the gift of life. Also, the Intramural Program will be giving a t-shirt to another lucky donor.

The dorm house that donates the most blood will have their name engraved on the Serrano Village Blood Drive Plaque, as Mojave did last year. The Blood Bank will give each donor a free "cool-can holder." The Blood Bank will also give a pedestal coffee mug to those people who have donated three times since January 1, 1983. Even if you aren't eligible yet for the coffee mug, now's the time to start.

"Since the Blood Drive is the day after Valentine's Day, have a heart and share this special gift of blood with others," encouraged Dr. Savage.

Let's Get Together



CORPORATION

America's newest and fastest-growing nationwide corporation invites you to earn next year's tuition before June.

If you are energetic, outgoing, ambitious, and you enjoy meeting new people, we may just have the opportunity you've always wanted.

Work part-time or full-time.

Set your own hours.

We need Local Representatives and Area Coordinators.

For continuing students, this expands into a highly-lucrative summer position, which flexes back in the fall to fit your academic schedule.

Many permanent positions are available nationwide, as well.

This is a rare and unique ground-floor opportunity which probably will not repeat, once the necessary personnel have been acquired.

To apply, send a self-addressed, stamped, business-size envelope. Application form and information will reach you by return mail.

Questron Corporation  
Suite 204  
2012 Grove Avenue  
Richmond, VA 23220



# RECORD RACK: KANSAS

by Greg Timpany  
Album: *Drastic Measures*  
by Kansas

This album features a streamlined version of Kansas. Gone are vocalist/violinist Robbie Steinhard along with vocalist Steve Walsh. Despite the loss, Kansas has carried on like a wayward son.

John Elefante has taken over the vocal chores. At these tasks he has performed nothing less than excellently. Along with his brother Dino, they have also taken over a good portion of the writing responsibilities. These changes have worked well for the band, except they no longer have those distinctive vocal harmonies present on

songs like "Portrait, He Knew," and "Hold On."

Kerry Livgren, who has been with Kansas since its inception, provides the remainder of the new material. Livgren's writing style is very tense and direct. He has a great ability to translate his feelings into powerful music. Songs like "Mainstream," and "End of the Age" are finely crafted both lyrically and instrumentally.

The one thing I really appreciate about Kansas is their ability to mix spirited vocals with technically superior instrumentals. Neither aspect receives too much emphasis. Backing the instrumental mix is the

powerful duo of Phil Ehart on drums and percussion, and Dave Hope on bass guitar. On top of the rhythm tracks are the guitar lines of Rich Williams and Kerry Livgren. Neither guitarist owns the spotlight, and they have a habit of trading off guitar lines in a very efficient manner. Keyboard lines are provided by Elefante as well as by Livgren.

Side one explodes with "Fight Fire With Fire." This is a fast paced song dealing with a man who will just not give up and roll over. The video makes this point even clearer. "Everybody's My Friend" is Elefante's look at the astonishing lack of privacy that an entertainer

must deal with. "Mainstream" is an excellent look at the overly commercial tendencies of the Music Industry. The solo on this song is probably the best on the album. The side ends with an amusing number entitled "Andi."

Side two opens with the theme song of the apathetic members of society. "Going Through the Motions" points out just how routine and mundane daily life can be, and "Get Rich" is a perfect description of how the greed of those in power can be. "Don't Take Your Love Away" starts out slow and then picks up a fiery pace. This song is a case in point of how Kansas mixes superior vocals with burning instrumentals. "End of the Age" is one of Livgren's compositions. The song is religious in nature, but is

handled in very good taste. It is interesting to note that several members of Kansas are Born Again Christians. This disproves the fact that all rock musicians are atheistic and hedonistic in nature. The album ends with a moving keyboard number entitled "Incidence on a Bridge."

**"...Kansas mixes superior vocals with burning instrumentals."**

A great deal of today's music has very little to say, both musically and lyrically. Kansas music does not fall into this area. They have continually progressed and changed over the years, but they have not sacrificed their musical integrity for a commercial sake.

## Take Charge At 22.



In most jobs, at 22 you're near the bottom of the ladder.

In the Navy, at 22 you can be a leader. After just 16 weeks of leadership training, you're an officer. You'll have the kind of job

your education and training prepared you for, and the decision-making authority you need to make the most of it.

As a college graduate and officer candidate, your Navy training is geared to making you a leader. There is no boot camp. Instead, you receive professional training to help you build the technical and management skills you'll need as a Navy officer.

This training is designed to instill confidence by first-hand experience. You learn by doing. On your first sea tour, you're responsible for managing the work of up to 30 men and the

care of sophisticated equipment worth millions of dollars.

It's a bigger challenge and a lot more responsibility than most corporations give you at 22. The rewards are bigger, too. There's

a comprehensive package of benefits, including special duty pay. The starting salary is \$17,000—more than most companies would pay you right out of college. After four years, with regular promotions and pay increases, your salary will have increased to as much as \$31,000.

As a Navy officer, you grow, through new challenges, new tests of your skills,

and new opportunities to advance your education, including the possibility of attending graduate school while you're in the Navy.

Don't just take a job. Become a Navy officer, and take charge. Even at 22.

NAVY OPPORTUNITY INFORMATION CENTER T 437  
P.O. Box 5000, Clifton, NJ 07015

☐ I'm ready to take charge. Tell me more about the Navy's officer programs. (DG)

Name \_\_\_\_\_ (Please Print) \_\_\_\_\_  
Address \_\_\_\_\_ Apt. # \_\_\_\_\_  
City \_\_\_\_\_ State \_\_\_\_\_ Zip \_\_\_\_\_  
Age \_\_\_\_\_ College/University \_\_\_\_\_  
Year in College \_\_\_\_\_ GPA \_\_\_\_\_  
Major/Minor \_\_\_\_\_  
Phone Number \_\_\_\_\_ (Area Code) \_\_\_\_\_ Best Time to Call \_\_\_\_\_

This is for general recruitment information. You do not have to furnish any of the information requested. Of course, the more we know, the more we can help to determine the kinds of Navy positions for which you qualify.

MA 9/82

## Navy Officers Get Responsibility Fast.



### Record Trivia

1. Vocalist Jon Anderson worked in collaboration with Vangelis of "Chariots of Fire" fame.
2. Fifteen years ago the classic Led Zeppelin I was released. This was the start of one of the most prolific careers the music industry has ever seen.

### Last Week's Answers

#### This Week's Questions

1. What was the name of Kansas' live album?
2. Who was the Grateful Dead's original vocalist and keyboardist?

### NEED A NEW CAR?

College Grad?—Student?  
Little Or No Credit?  
Low Down?  
Call Me!

Jay Brand-Special College  
Program Manager-883-8833  
Dealer

Everybody Reads The Cal State  
Chronicle

Advertise

With Us







## "OZ"

A nine-year-old Vancouver schoolgirl has been chosen to play the pivotal role of Dorothy in Walt Disney Pictures' large scale fantasy/adventure "OZ," it is announced by Richard Berger, president of Walt Disney Pictures, and producers Gary Kurtz and Paul Maslansky.

Fairuza Balk, an American born Canadian immigrant, beat out hundreds of applicants for the starring role of Dorothy, the Kansas farm girl played by Judy Garland in the 1939 film classic, "The Wizard of Oz." "OZ," based on *Ozma of Oz* and *Land of Oz* by L. Frank Baum, introduces a new cast of imaginative characters as Dorothy returns to Oz for further adventures. The motion picture begins principal photography at Elstree Studios near London on February 20.

The search for Dorothy began last August with an open call for girls aged 9 to 12. Auditions were held in six American and two Canadian

*"The motion picture begins principal photography at Elstree Studios near London on Feb. 20."*

cities. In November twelve finalists were tested at the Disney Studios in California from which two were flown to London this month for complete studio tests.

Fairuza, born at Point Reyes, Ca., on May 21, 1974 attends the Lord Byng French Immersion School in Vancouver, British Columbia. She is 4'6" tall, weighs 60 lbs., has long, light brown hair and hazel eyes. She was the youngest of all applicants.

## "The Woolgatherer" To Be Presented

The story of a young, naive recluse and the impact of a fast-talking truck driver entering into her life will be presented Feb. 9 through 12 at Cal State, San Bernardino.

"The Woolgatherer" is the story of Rose, an innocent young woman whose life is centered around reveries and daydreams, and her relationship with the rough and witty truck driver, Cliff. The student-produced play opens at 8:15 p.m., Thursday, Feb. 9 in the Drama Lab.

Amber Talvi, a senior theatre arts major, will portray Rose. A Riverside Poly High School graduate, she was named best supporting actress in the 1983 Redlands Theatre Festival.

Clayton Martinez, a freshman theatre arts major, portrays Cliff. He is a Ramona High School graduate and has attended Riverside City College. Both are Riverside residents.

Senior theatre arts major Mary Manthis of Highland will direct the production with Mark Duncan, of San Bernardino, a freshman majoring in theatre arts, will be stage manager.

Mark Peters, a senior theatre arts major of Alta

Loma, is in charge of costumes and graphic design.

Set and lighting design is by Pat Hadock, of the theatre arts department staff.

Performances will continue Friday and Saturday, Feb. 10 and 11, at 8:15 p.m.

with a 2 p.m. matinee Sunday, Feb. 12. All performances are in the

Drama Lab.

Tickets, \$2 for all seats, all performances, will go on sale Feb. 3 in the theatre arts department office.

THE PLAYERS OF THE PEAR GARDEN PRESENT

William Mastro Simone's



Feb. 9, 10, 11, 1984 / 8:15 p.m.  
Matinee Feb. 12, 1984 / 2:00 p.m.  
C.S.C.S.B. Drama Lab  
Creative Arts Building  
Reservations and ☎  
Wheelchair Access: 887-7452

## Student Union--

### There's alot More Than You May Know

continued from page 1  
Student Union desk or show up Wednesday evening with your favorite instrument.

#### LIVING AND LEARNING SERIES

Faculty, staff and students and the community have been invited to facilitate the series. The series attempts to provide mini-seminars which address current needs and issues. The next seminar will be Wednesday, Feb. 8 at 6:30 in the SUMP, where Martha Kazlo, a counselor in the Student Counseling Center will facilitate the third living-learning series: "How compatible are you?" This program will be a fun evening to discover if you will get along together as a couple, as roommates, as friends.

#### DODGERS ESCAPE

Come join the fans and get a sneak preview of the L.A. Dodgers. The work out is free to the public. Watch a drill and batting practice along with a game. Gates open at 11:30. The game begins at 1 p.m.

#### SKI OLYMPICS

Friday, Feb. 17, experience the thrill of racing the slopes at Goldmine ski area in Big Bear. There will be a special starting area for beginners and great door prizes from Coors. This ESCAPE trip sponsored by Associated Students, physical education

Students, Physical Education and Activities, promises to be better than ever. Register at the Student Union desk by Wed., Feb. 15 or pay at the slopes before 10 a.m. The cost of this event is \$15 per person which includes lift ticket and two timed runs. Own transportation required.

#### MAJORS NIGHT

Winter quarter the Student Union began special Department/Major nights in the Pub at 8 p.m. These special major nights are nt to be an informal way to interact with others in your major as well as to inform new students of the opportunities and resources available to them. Faculty from the department will be there to answer questions

and mingle with the students. Munchies will be provided compliments of PFM. The following departments will participate in the program this quarter: Feb. 7 Acctg./Finance; Feb. 13 English; Feb. 28 Mgmt. and Marketing; Feb. 21 Economics; Feb. 29 Psychology/Counseling; March 6 Chemistry/Biology.

#### SPECIAL FILM "SAY AMEN SOMEBODY"

To celebrate Black History Week a special film "Say Amen Somebody" will be played in the Student Union Feb. 8, 9, 10. The video is a documentary jubilee of Black American Gospel.

#### CPR CLASS

The Student Union is sponsoring a CPR class as a part of its living-learning series. Greg Thompon, CSCSB Campus Police Officer, who will facilitate the class. Sign up at the Student Union desk by Feb. 16 or show up at the at 8 a.m. - 1 p.m. in the Student Union meeting rooms a & b. Come learn how to save a life...

# ATTENTION!

AVAILABLE NOW!

APPLICATIONS FOR

## FINANCIAL AID



CAL GRANT DEADLINE-

FEBRUARY 9, 1984

PRIORITY DEADLINE  
FOR FINANCIAL AID-

MARCH 1, 1984

APPLY

NOW!



# In Trouble? Counseling Center Ready To Help

by Emily Hanisko

"The students should make use of us. I don't think a lot of them even know we are here," commented Dr. Martha Kazlo on the Counseling Office in the Physical Science Building, Room 227. Dr. Kazlo is a full-time psychologist at the center. For nine years she's worked with the students on this campus in her office that, she commented, "is sometimes called the broom closet because there are no windows." I asked her about the rest of the counselors at the center. John Hattom is the full-time director and counselor while at the same time Associate Dean of Student Development. Ms. Jane Russell is a part-time marriage, family and child counselor who not only helps out on campus but has a private practice. Mr. Donald Woods is the International Student Advisor who is also in charge of administering tests like the California Basic Educational Skills Test

**"When do I know it's time to come get help?"**

(CBEST) and the Graduation Record Exam (GRE) among

others that the center offers. Steve Coffey, who has been a student here for four years, also works at the center. He has achieved his Bachelor's Degree in Psychology and is continuing to get his Master's Degree in Counseling Psychology. He and Ms. Veta Hunn are two graduate students interning in the school's counseling office. When asked what made him decide counseling was his field he replied that it is one of the many jobs one could do while sitting (years ago, an accident confined him to a wheelchair) and he enjoys working with people.

Steve also commented on the need for we students to understand that the service is available. There is no charge because the money was paid at registration when we dished out the cash for fees. I asked if there were any common problems that students had and Steve shook his head right away. "Each person has problems or situations that are as individual as they are. Some people come in quicker than others."

"When do I know it's time to come get help?" I asked. "When you realize you can't handle a certain situation by yourself anymore. Some problems are easy to solve such as midterm stress, overload or just being a new student on campus, being far from home. This isn't like a

garage where someone goes and says, 'Here, this is broken, please fix it.' Sometimes it takes more than one visit. It isn't necessary to push yourself to the limit (in marital, family, personal problems) especially when the help is close and free."

**"We're paid to help you get through school..."**

"We may not even be the ones to help solve your problem," Dr. Kazlo added, "but we can at least steer you in the right direction. We offer a one-to-one basis in problem solving. You might be having a hard time with time management or just low self-esteem; you know, like the mornings you don't feel like crawling out of bed even though you've just had a full twelve hours sleep (and you know it's not the flu.) We have groups in assertiveness training, stress reduction and management, job interview assertiveness, relaxation techniques and more."

The hours the office is open are as follows: Monday and Wednesday from 9-6:30 p.m. and Tuesday, Thursday and

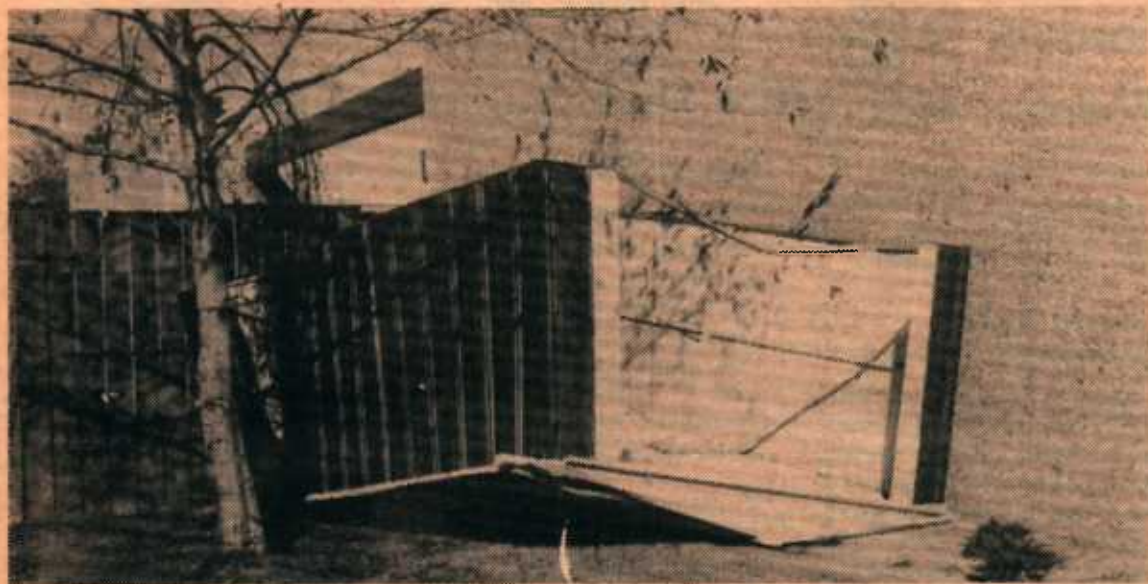


Counseling Center secretary Shirley Ealy schedules appointments for students with academic or personal questions.

Friday from 9-4:30 p.m. The office is usually not very busy but you may need to call or drop by and make an appointment.

Dr. Kazlo summed up the service in a few words, "We're paid to help you get through school and help you

let your mind concentrate on your subjects." Concentrate may sound easy but we all know sometimes it's not. "I've always thought," she continued, "that when a person gets through registration and the quarter they should get an 'A' for survival."



Last week's high Santa Ana winds caused damages on campus. See story on page one.

## Help Available for the Procrastinator

by Carol Leish

You realize that your twenty page term paper for English needs to be grammatically correct before you turn it in next week. You desperately need to find someone to help you before you panic.

Dr. Dianne Irwin, director, says "The Learning Center does offer assistance in most academic areas."

Tapes of lectures, for most large classes, are available. Jim Iwasa, an undeclared graduate student, said, "I appreciate being on my own schedule in my self-paced History of World Religions class. I am able to do things at my own leisure." For self-paced classes, the center provides video and audio cassettes and administers testing.

Nelda Smith, a graduate student in business, says she has found it helpful to work with an accounting tutor. She said, "I am really surprised more people do not use the Learning Center throughout the quarter. A lot of offered here."

Students can receive tutoring, at the present time, in English, biology, chemistry, physics, geometry,

trigonometry, algebra, and calculus.

Jim Gratz, a graduate student in computer science, comes to the center to study. He said, "If I have a problem, I can usually find a tutor to help me. I like the conducive study environment offered here."

Tutors, who are available according to a posted schedule, have a least a 3.0 overall GPA and at least a 3.0 GPA in the subject that they are tutoring. They also have received recommendations from faculty members.

Besides tutoring, seminars are offered through the Learning Center. Diane Paletir, advisor at the center, offers seminars in: writing research papers, writing awareness and improvement, and understanding and analyzing poetry.

The Learning Center is located in Pfau Library 37. It is open Monday through Thursday; 8:30 to 8:30; Friday, 8:30 to 4, and Saturday, 12 to 3. Students can call 887-7612 for more information.

Irwin said, "After visiting the Learning Center once, students usually come back."



## Winterfest

cont. from page 3

theme. "So think country and dress the part," says Clare Shcrefinski, "this is an excellent opportunity for clubs to recruit new members or otherwise promote your organization on campus."

The fun of winterfest will not end when the sun goes down. That night A.S. will sponsor a Sadie Hawkins dance. So girls grab them guys. The dance will cost 50¢ for CSCSB students, \$1 for non-CSCSB, and prizes will be given away.

**"this is an excellent opportunity for clubs to recruit new members or otherwise promote your organization"**

It's still not too late to participate. Any interested club can call Clare Sharefinski at 887-7407, and any interested individuals who would like to participate should call Dexter Wash at 887-7498. Let's all have fun now...ya' here?

## HOCKEY

### Gretzky's Puppies Prevail

by Al Katemopoulos

In a battle of unbeaten teams Saturday, Gretzky's Puppies prevailed over Holiday on Ice by a score of 3-2.

After a scoreless first period, Holiday's John Toscano took the puck and drove it past Gretzky's goalie Mike Haller to give Holiday a 1-0 lead. Seconds later, Gretzky's Jay Alverson tipped in a deflection to tie the score at 1-1. Alverson scored again just before the end of the second period to give Gretzky's a 2-1 lead.

In the third period, it was Alverson getting the hat trick giving Gretzky's a 3-1 lead. With less than 2 minutes left, Holiday pulled goalie Jim Smolich for an extra

attacker. Gretzky's defense remained tenacious and goalie Haller turned away shot after shot. With seconds remaining, Holiday's Bob Johnson scored to bring the final score to 3-2.

Gretzky's remains unbeaten at 3-0 while Holiday falls to 2-1.

In a game between the Charleston Chiefs and Manitoba Maulers, it was the Chiefs winning 8-2. Tom Ruvalo scored six times for the Chiefs as well as Paul Savage twice.

The Chiefs are now 2-1 while the Maulers fall to 1-2. The P.E.M.M. Slosers picked up to forfeit to improve their record to 1-2.

	W	L	PCT	GB
Gretzky's Puppies	3	0	1.000	—
Charleston Chiefs	2	1	.667	1
Holiday on Ice	2	1	.667	1
P.E.M.M. Slosers	1	2	.333	2
Manitoba Maulers	1	2	.333	2

## BASKETBALL



B League		A League	
Brown Skins	34 Bombers	26 Playboys	
Enforcers	47 Inever touched'em	41 Old Boys	
Mules	28 Knights	18 Roundball	

PALOMINO STATION  
PALOMINO STATION  
PALOMINO STATION  
PALOMINO STATION  
PROUDLY PRESENTS

BACK BY POPULAR DEMAND  
THE INCREDIBLE

ROB  
HANNA'S

Salute To

ROD  
STEWART



— PLUS —  
SPECIAL GUEST

DOORS OPEN  
AT 7 P.M.  
LIVE ROCK BEGINS  
AT 8 P.M.

\$5.00 COVER

(714) 881-2773  
5881 El Palomino Dr., Riverside



Wednesday  
Feb. 8, 1984  
7pm - 2 am

★ 25¢ BEER ★ till kegs run dry  
10 FT. P.S.T.V. VIDEO SCREEN  
★ 18 & OVER INVITED ★

## Advertise With Us

## CLASSIFIEDS

**Wanted:** Neat, dependable person to share large furnished mobil home. Owner home only on weekends. \$225.00 a month and share utilities. Call 886-0285 for information.

**For Sale:** Kenwood receiver, 200 watts per channel. Excellent condition. Originally \$850, sacrifice at \$350. Call 882-5579.

**Stereo Equipment:** Discount on over 50 brands of audio, video and car stereos. Full warranty; consultation and set up service. Call James at 882-5579 after 4 p.m. (If no answer, please leave message.)

**For Sale:** 76b Fiat Spider convertible, 92,000 mi, 5 speed, am/fm stereo, removable hardtop. \$1900 or best offer. 824-7755 after 6 p.m.

**Typing:** Professional Typist, reasonable rates. Term papers, theses, Carol 887-6198, Mon-Sat.

**Male Donors Needed** for artificial insemination program. Must be healthy. Reimbursement \$30. Contact Karen House 824-4404. 5/30

**Writing Tutor:** One-third to one-half of your grade is based on term papers. Do not flunk a subject you know well because of an inability to express yourself in writing. Call Len Ehret, Mon-Fri at 887-2922. 2/22

**Wanted:** Success-oriented, self-motivated individual to work 2-4 hours per week placing and filling posters on campus. Earn \$500-plus each school year. 1-800-243-6679. 2/29

**Professional Word Processing**  
Better quality and less expensive than regular typing services. Spelling, grammar, punctuation and sex-free writing checks available. Revisions at reduced prices. Len Ehret (English Major Graduate). 887-2922 Mon-Fri ONLY. 2/15

**EXPERIENCED TYPIST**  
886-2509 (10:00 to 2:00)  
886-6262 (other times)  
Mrs. Smith

**Professional Typist** available to do all your college papers. Reasonable rates. Call 882-6502. 3/7

**For Sale:** 1971 Mustang Runs good needs body work. \$600 Call Lisa 886-0285.

Hours 7:30 a.m.-8:00 p.m. **Now Open** Ph: 881-4006  
College Park Laundromat & Dry Cleaner

### Where

At the corner of Kendall and 3rd St.

### Now

(Get your jeans cleaned in our super machines)

### And

You'll get 25% off on your dry cleaning with this ad

2/28



# Editorials

## "Privilege" Being Lost to Off-Campus Visitors

With every quarter is necessary for Cal State students to shell out an additional \$15 for a parking permit. This sticker is supposed to guarantee adequate parking, and usually it does even if it means walking a long distance.

However, now and again, campus facilities are used by off-campus organizations. When this happens it is virtually impossible to find a parking space. The student finds himself tempted to park illegally rather than drive around looking for a single empty slot.

It seems unfair that after paying for the "privilege" to park, there are no available spaces due to non-paying visitors.

Although this is at present a temporary problem, how long will it be before this becomes a daily occurrence? Ever increasing enrollment, as well as Cal State being a community-involved campus, necessitates that some solutions to the problem be considered before it becomes an every day happening.

## The Right of Choice

January 21 marked the eleventh anniversary of the legalization of abortion by the supreme court.

In 1973 just over one million abortions were estimated to have occurred annually. That number has increased half again annually today. Abortions have been and always will be part of the human existence. The supreme court recognized this, as well as the inalienable right of choice for women.

Evidently after eleven years the so-called Right to Life groups and President Reagan have still not accepted this. They seemingly would rather see women who feel they have no other choice, turn to back alleys or self induce their abortions.

Abortion should be viewed as a last alternative, but women should always have the right to choose. The supreme court decision should be protected.

## Guest Analysis

### Andropov, Soviet Policy and the Succession Crisis: Staying the Course

by P.A. DeBiaso  
Pol. Sci. Instructor

*This is the second half of this series.*

The political and strategic gains yielded by the Soviet invasion of Afghanistan outweigh the risks and costs incurred so far. The 100,000 troops in Afghanistan represent less than 2% of Soviet Armed Forces strength. The cost of subjugating this territory is nominal when one considers the Russian geo-strategic interest in Afghanistan for over 150 years. With a fraction of their Armed Forces, the Soviets have acquired another satellite; expanded further in the direction of a long sought after warm water outlet to the Indian Ocean; advanced their capability to project military power closer to the critical Straits of Hormuz in the Persian Gulf; and deployed troops permanently along the border of America's staunchest ally in South Asia, Pakistan.

Again, Soviet policy toward Poland remains remarkably consistent under Andropov. This is so despite the impression conveyed that events in Poland have been a great embarrassment to the Soviet Union and a direct challenge to its authority in East Europe. What Poland illustrates is the increasing Soviet capacity to influence events in satellite regimes with a minimum of perceptible physical intervention. The strategy of indirect intervention in Poland, unlike the type of force employed in Hungary (1956) and Czechoslovakia (1968), demonstrates that the Kremlin is now more adept at controlling the internal affairs of these countries with a nominal expenditure of Soviet resources.

The leadership in Moscow is undoubtedly pleased with the dramatic extension of its influence in the Third World through force of arms. Under Brezhnev this engendered an increase in the number of Soviet sponsored communist regimes. Throughout the 1970's no less than 8 Marxist-Leninist parties seized government power with the aid of either Soviet arms, troops or proxy forces. The Soviet Union under Mr. Andropov, perceiving its past success in exporting anti-Western revolution as confirming the correctness of

its policy, is pursuing with particular facility the destabilization of non-communist regimes throughout Latin American and the Western Hemisphere.

During Andropov's tenure the Soviets have sought detente with the U.S. as assiduously as they have in the past. It is the U.S. that has become frustrated with an era of detente most notably characterized by a massive Soviet arms buildup, violation of arms control treaties and increasing exportation of anti-Western revolution. However, the U.S. deceived itself concerning the anticipated benefits of detente. The Soviet approach to detente was never at variance with its assessment of international relations as being characterized by competing and adversarial political-economic systems. Soviet objectives in detente were clearly defined in accordance with that view. Moscow sought a relaxation of tension in order to obtain needed Western credits, loans, high technology and the correct political climate necessary to permit a major rearmament program without provoking a negative response from the Western powers. It was during this time that the U.S. implemented unilateral nuclear force reductions and cutbacks in defense expenditures. Between 1969 and 1979, American defense spending declined in real terms each year but two. Soviet defense spending during this same period, however increased. It has grown every year since

detente was initiated, with annual expenditures at 12-14 percent of GNP—twice that the U.S. spends on defense. As a result, the USSR has cumulatively outspent the United States in defense by over 400 billion dollars in the last decade.

We are compelled to ask ourselves to what can this consistency in Soviet policy be attributed? In searching for the answer one must always bear in mind the Soviet leadership, whomever it may comprise, operates within a particular political, ideological, and military tradition. It is this tradition that informs and guides the broader parameters of Soviet national strategy and transcends changes in leadership. The objectives and goals of Soviet revolutionary policy are not subject to renegotiation. They reflect long term planning squarely based on an enduring politico-military consensus defined by the highest Communist Party organizations. It is this aspect upon which Western analysts and policymakers should focus their attention when examining possible changes in Soviet leadership. For the time being the West can expect the Soviet Union to "stay the course" irrespective of whether Yuri Andropov or a successor reigns over the USSR. Mr. Andropov's inheritance, in all likelihood, will become his legacy.

**The guest analysis column welcomes submissions from faculty and graduate students from all disciplines.**

Editorials that are unsigned represent the majority opinion of *The Cal State Chronicle's* Executive Board

<b>Editor</b>		
<b>Executive Editor</b>	Kathryn C. Yount	<b>Production Editor</b>
Lisa Beard	<b>Layout Artists:</b>	Brad Pivar
	Susan Altman	
	Jeri Reed	
<b>Typesetter</b>	Michelle Sylvia	<b>Photographer</b>
Kathleen M. Coles		Jan Bruggeman
<b>Office Manager</b>	<b>Business Manager</b>	
Lillian Enstrom	Position Available	

**The Cal State Chronicle Policies**

The *Cal State Chronicle* is published under the control of the CSCSB Publications Board. It is published on a weekly basis for a total of 28 issues less quarter breaks and final exam periods. Contact the office at 887-7497, 5500 State College Parkway, San Bernardino, CA., 92407, for further information.

**Letters to the Editor** should be kept to a maximum of one and one-half typed pages. Letters which attack any person may be held until that person has had time to respond in the same issue as the other letter. Letters must include name and address, a phone number, and must be signed, although names will be withheld upon request. All material becomes property of *The Cal State Chronicle*.

The *Cal State Chronicle* reserves the right to edit all copies submitted in order to comply with space requirements and libel laws.

**Advertising** requests should be addressed or directed to the Business Manager at the address and number above.

**Classified Ads** may be ordered similarly except that such ads for students, faculty, and staff of CSCSB of reasonable length are free.

**Ad and Copy Deadlines** are the Thursday preceding the date of publication. Copy received after that date appears in the paper on a space available basis. *The Cal State Chronicle* reserves the right to refuse to print ads and copy submitted after the deadline.

**Advertising Policy.** *The Cal State Chronicle* accepts advertising in good faith but makes no warranty, and does not check any goods or services advertised for validity.

The *Cal State Chronicle* is funded by an annual allocation from the Associated Students to cover the costs of printing and expenses. It is distributed free to students and the community. The remainder of the funding is generated by *The Cal State Chronicle* itself.





# "Break the mold and dare to get involved."

by Greg Timpany

This is dedicated to those people who have not taken the time to get involved. For some reason or reasons, I am sure there are several, people today just do not get involved. If it means making a small sacrifice in terms of time, money, or effort they tend to shy away. This is truly unfortunate because in many cases these people are missing out on a good thing.

Apathetic people are truly a strange bunch of creatures. They have a tendency of hiding behind plastic barriers

which allow them to screen out everything which is different from their narrow point of view. This causes them to live in a rut which deepens over time. Life in a rut is very convenient for the apathetic person for it gives them reason not to think. Everything they say and do is a mere reflex action which requires very little, if any, creative thinking. Apathetic people are very similar to pre-programmed robots, in that you can predict their actions well in advance.

Not getting involved also

makes the apathetic person's life much simpler. They do not have to face the extra challenges that getting involved in something can bring. To them school is nothing more than shuttling back and forth from home to class to home day in and day out. As they slither around they are shielded from new experiences by their plastic shields. By not accepting new challenges they are limiting their growth potential, and prolonging their repititious existence.

Getting involved and

trying different things can lead to personal satisfaction and growth. Two historic examples of this fact are Ghandi and Hitler. They both became involved and in turn increased their personal influence. Granted they worked toward completely opposite goals, but they both got involved and got farther ahead then they would have had they been apathetic. Had they remained apathetic they would have been swallowed by the ignorant masses instead of leading them.

I had no desire to become one of the masses so I cast off my shadow of apathy and got involved. I could have easily remained one of the ignorant masses, but I wanted to expand out and learn new things. Through working with student organizations I have had the opportunity to expand on what I have learned in the classroom. Unless you wish to remain one of the ignorant, slithering masses, break the mold and dare to get involved.

## LETTERS TO THE EDITOR

### Advertising Policy Is Questioned

Dear Ms. Yount:

On January 11, 1984 the Financial Aid Office submitted a request to the *Cal State Chronicle* to advertise financial aid deadlines for the 1984-85 academic year. We asked that this announcement continue to be run through the Cal Grant deadline (February 9) and until March 1, 1984, the priority date for other aid administered by our office.

We were told that our request was too late for the first issue of the Winter Quarter, but that the ad would appear in subsequent issues. The January 18 issue of the *Chronicle* had nothing regarding financial aid deadlines. Upon inquiry we were told that the announcement had been replaced by a paid advertisement. Quite

frankly, we were surprised and disappointed that financial aid information would not receive higher priority by the staff of the *Chronicle*.

Of further disappointment was the manner in which financial aid deadlines were announced in the January 25 issue of the *Chronicle*. Our concern is not that you did not use our exact advertisement, but that the announcement was tied to an advertisement for a computerized scholarship search program. The implication that one draws is that this scholarship search program is recommended by the Financial Aid Office. To the contrary, we would suggest that the student save his/her money. Better results can probably be obtained by

reading the CSCSB Financial Aid Brochure and spending an hour of research in the library browsing through books on scholarships, loans and work programs.

Too often we hear complaints by students indicating they knew nothing of financial aid. Besides radio announcements, posters, consumer brochures, and information tables displayed at registration, we have utilized the school newspaper to provide the necessary information on financial aid to our continuing and prospective students. The manner in which students have received information through the *Chronicle* regarding financial aid needs improvement and has been a disservice to CSCSB students. We are hopeful that

this situation will be rectified in the immediate future.

Sincerely,

Ted Krug

Director of Financial Aid

#### Editor's Response

Dear Mr. Krug,

Ordinarily the *Cal State Chronicle* asks campus offices to prepare news releases to disseminate information to students through our publication. Because financial aid deadlines are critical to many students, I felt an exception should be made for financial aid and a display ad, rather than a news release, would be more appropriate.

However, because the *Chronicle* requires the support of community advertisers in order to remain operating and enable us to pay our bills, paid ads

are understandably given priority.

The information concerning the computer financial aid service was included in the financial aid options article because it is one option; It may not be the best option, but it is, nonetheless, one avenue for students. Omitting options that the newspaper is familiar with would be a disservice to our readers.

The *Chronicle* will continue to inform students about financial aid deadlines providing that there is space available and the information is timely. The *Chronicle* will also continue giving priority to paid advertisements; if we did otherwise, we would not be able to continue publishing until the end of the year, and I would consider that to be a greater disservice to our readers.

### More Thoughts on the

Dear Editor,  
Greg Timpany and Marcina Correll have both completely missed the point of my letter to the editor. First of all, Mr. Timpany, nowhere did I state that "the students on campus do not listen to rock and roll music" as you stated. The point I was making was the fact that the majority of students here listen to New Wave and other forms of music as well as rock and roll—they do not listen only to the likes of Black Sabbath and John Cougar-Mellencamp. There are many people who are into the Progressive Rock of bands like Asia and Journey and the Rockabilly of the Stray Cats (forms of rock and roll which are also strangely missing from Record Rack reviews most of the time). Perhaps I should have included Progressive Rock and Rockabilly in my list, but I tried to include everything it would have become overly long and redundant. As for the "good ol' Midwestern Rock and Roll" phrase which

you claim reflected a narrow viewpoint on my part, may I remind you that I was merely quoting a phrase that you coined in reference to that line of music. If you read the letter, you should have noted the quotation mark around that phrase when it was used.

Finally, you claim your reviews are limited because you cannot afford to buy albums. Who said you had to buy albums in order to review them? Right across the hall from the *Cal State Chronicle* office is the AS Activities office which has a large collection of albums of many different forms of music for use at AS dances and other functions. They will be glad to let any registered student borrow them as long as they are notified two days in advance of when he/she wants to use them. There is also the Listening Center on the fourth floor of the Library with a magnificent collection of albums including some of the latest pop releases. All you have to do is check out a

room and as many different albums as you like and listen to them. You don't have to ask me or anyone else to buy them for you (but if you want to borrow albums from me for review, you are perfectly welcome to do so.) As far as what kinds of music you listen to; I could care less about your personal preferences. What concerns me is your responsibility as the sole music reviewer of the *Cal State Chronicle* to adequately represent the students of Cal State in your coverage of popular music. I have yet to see any reviews of Duran-Duran, Men Without Hats, The Pretenders, Prince, The Gap Band, The Stray Cats, Asia, or many others that I could list. When you do, then I can respect Greg Timpany as a seasoned music critic who represents a broad segment of the CSCSB student body.

To Marcina Correll go my thanks for her information concerning her home state of Indiana. But I am already aware of the fact that

### Record Rack Selections

Michael Jackson and Cole Porter hail from there, as well as the fact that many other artists are from the Midwest, including Prince who hails from Minnesota. But, like Greg Timpany, Ms. Correll, you have missed the point of my letter. In reference to the Midwest, I was speaking about "good ol' Midwestern rock and roll" a generalization coined by Greg Timpany, not me. More specifically, I was speaking about a prevalent attitude in the Midwest that is reflected in a statement in the Jan. 14 issue of *Billboard Magazine* in an article concerning Album Oriented Rock (AOR) radio that "Sentiment for heavy metal and against modern music (id New Wave, etc.) runs strongest in the Middle of the Country. This is exactly the attitude that also prevades Greg Timpany's Record Rack column when he consistently reviews only music from Heavy Metal or similiar bands and debunks New Wave as he has done.

If you want information on the origin, class, race and creed of rock and roll fans, or for fans of other kinds of music for that matter, read *Billboard Magazine*. It is the music industry's most widespread and respected publication. It contains information on every aspect of popular music including the best information on who listens to what the most. Check out the Arbitron radio surveys, which have consistently shown that overall, the largest percentage of the AOR radio format audience, which is the format that plays the most Heavy Metal, is the white Anglo male. Better yet, look at the popularity charts.

If you feel offended by my use of the W.A.S.P. label, I will gladly cease and disist with its use whenever Anglo America ceases in its labeling of other racial and ethnic groups. Maybe now you know how they feel.

Sincerely yours,  
Chris Ellis





# Canada's Bear of Beers is here!

Down from the North Woods of Canada comes Grizzly Beer. Not just another Canadian beer, but a rare breed of brew. An authentic Canadian lager—naturally aged, so it's remarkably smooth. With a flavor no other Canadian beer can stand up to. The bear of beers is here!



**CANADA'S BEAR OF BEERS**

Imported by Van Munching & Co., Inc., New York, N.Y.