

California State University, San Bernardino

**CSUSB ScholarWorks**

---

CSUSB Magazine

Arthur E. Nelson University Archives

---

1993

## Cal State San Bernardino Magazine (Fall 1993-1994)

CSUSB

Follow this and additional works at: <https://scholarworks.lib.csusb.edu/alumni-mag>

---

### Recommended Citation

CSUSB, "Cal State San Bernardino Magazine (Fall 1993-1994)" (1993). *CSUSB Magazine*. 9.  
<https://scholarworks.lib.csusb.edu/alumni-mag/9>

This Book is brought to you for free and open access by the Arthur E. Nelson University Archives at CSUSB ScholarWorks. It has been accepted for inclusion in CSUSB Magazine by an authorized administrator of CSUSB ScholarWorks. For more information, please contact [scholarworks@csusb.edu](mailto:scholarworks@csusb.edu).

Fall 1993-94

# Cal State

## SAN BERNARDINO

NEWS FOR ALUMNI AND FRIENDS OF THE UNIVERSITY



DISNEY  
CONSULTS  
CSUSB  
BIOLOGIST

PAGE 2

PARTNERSHIP  
2000 PROGRESS  
REPORT

PAGE 16



CALIFORNIA STATE UNIVERSITY  
SAN BERNARDINO



## Replenishing Inventory for Scholarship Shoppers



Juan Gonzalez

The good news is: More students than ever before may be eligible for financial aid this year because of changes in state and federal regulations qualifying them for assistance. The bad news is: There is less federal money available for grants and only a modest increase in state-funded assistance, so students may need to take out larger loans in order to complete their education.

For some students, these trends in college financial aid will translate into \$100 less in Pell Grants, which will be a maximum of \$2,300 this year. For others, state university grants could be slashed from \$1,440—what once was a "full

ride"—to \$100 or less. The reality is that many students will be bearing a bigger percentage of the cost of their education than ever before. This comes at a time when a 10 percent increase in California State University fees brings the surge in the cost of a CSU education to 80 percent over the past four years.

While still a bargain when compared with other states (California's state university fees are the 48th lowest in the nation), the cost of a CSU education could be reduced greatly by expanding privately endowed student scholarships available through CSUSB. Currently, only \$100,000 of the nearly \$15 million in assistance awarded through our Financial Aid Office is in the form of academic scholarships.

Meanwhile, the percentage of students who are applying for financial assistance has doubled within the past two years. Now nearly 68 percent of our 12,500 students have an application pending in the office. Each of them rightfully claims significant need, but only about half of their requests will be met.

Fortunately, a few more students will be assisted this year through recent private contributions made to the university. Three students will benefit from the newly established Jack H. Brown Scholarship for the School of Business and Public Administration, which has been created by the Food Industries Sales Club of Riverside and San Bernardino Counties. An accounting scholarship honoring the first dean of the business school, Dr. Hal Hoverland, will support students majoring in that field, while another privately endowed scholarship, established through the estate of Julie and Ann Ronning, will offer advantages for students studying the real estate industry. A fund established in honor of retired Barstow teacher, Clara McKinney, will assist future educators. And a scholarship started by former Cal State Professor Arlo Harris will benefit future chemists.

Each of these funds created within the past academic year will make a significant difference in the pursuits of students for years to come, and is turning the bad news into good tidings for some deserving students.

*Juan C. Gonzalez*

Juan Gonzalez

Vice President for Student Services

# Cal State

## SAN BERNARDINO

**CAL STATE SAN BERNARDINO**  
MAGAZINE IS PUBLISHED BY THE  
OFFICE OF **UNIVERSITY RELATIONS**  
AT **CALIFORNIA STATE UNIVERSITY,**  
**SAN BERNARDINO** FOR ALUMNI,  
FRIENDS, PARENTS AND COLLEAGUES.  
IT IS PRODUCED TRIANNUALLY AT THE  
BEGINNING OF EACH ACADEMIC  
QUARTER IN **SEPTEMBER, JANUARY**  
AND **APRIL**. THIS PUBLICATION IS  
PARTIALLY FUNDED WITH NON-STATE  
RESOURCES, INCLUDING A GRANT  
FROM THE **CAL STATE ALUMNI**  
**ASSOCIATION**. OPINIONS EXPRESSED  
IN **CAL STATE** MAGAZINE DO NOT  
NECESSARILY REFLECT THE OPINION  
OF THE EDITORS NOR REPRESENT THE  
OFFICIAL POLICY OF **CALIFORNIA**  
**STATE UNIVERSITY, SAN BERNAR-**  
**DINO**. EDITORIAL AND ALUMNI  
INFORMATION AND PHOTOGRAPHS  
SHOULD BE SENT TO THE

**CAL STATE SAN BERNARDINO**  
EDITOR,  
**CSUSB PUBLIC AFFAIRS,**  
**5500 UNIVERSITY PARKWAY,**  
**SAN BERNARDINO, CA**  
**92407-2397**

**GOOD QUALITY B&W PHOTOGRAPHS**  
**ARE WELCOME. POLAROID OR**  
**PHOTOGRAPHS PRINTED ON TEXTURED**  
**PAPER ARE NOT ACCEPTED.**

### EDITOR

Cynthia Pringle

### ART DIRECTOR / DESIGNER

Jay Wampler

### PRODUCTION ASSISTANTS

Chad Timmreck

### EDITORIAL ASSISTANTS

Mary Colacurcio  
Sam Romero

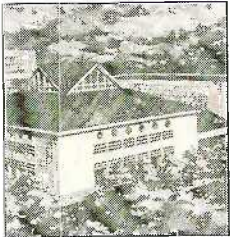
### PHOTOGRAPHERS

Dan Moseley  
Larry Rose

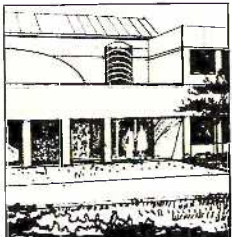
# Cal State

## SAN BERNARDINO

### C O N T E N T S



**Page 5**  
Japanese Gift Launches Building



**Page 14**  
Art Museum Half Funded



**Back Cover**  
Catch Coyote Contests This Fall



**SPECIAL**



**SPECIAL**



**COVER :**  
Biologist Stuart Sumida, the Bone Man to Disney artists, applies his expertise in comparative animal anatomy as a consultant on major motion pictures.

**OBSERVATIONS . . . . . INSIDE FRONT COVER**  
Less Than 1% of \$15 Million in Financial Aid Awarded is in Scholarships

*Beauty, Beasts and the Biologist . . . . . 2*  
Anatomically Correct Disney Animals Result from CSUSB Biologist's Advice

**CAL STATE UPDATE . . . . . 5**  
Air Force ROTC Launches Unit Here

**SCHOOL NEWS . . . . . 6**  
Blackstone Magic Team Donates Theatrical Scripts . . . 8

**COYOTE SPORTS . . . . . 12**  
Scholarship Golf Tournament Tees Off Oct. 22

**ALUMNI PERISCOPE . . . . . 13**  
Victorville Probation Officer Captures Alumnus Distinction

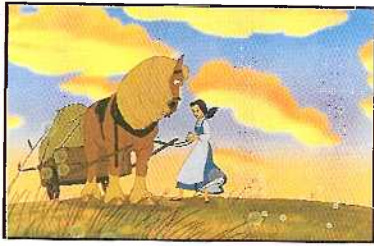
**GIFT RAP . . . . . 14**  
Retired Executives Needed as Volunteers . . . . . 15

*Partnership 2000 Campaign Update . . 16*  
Recognizing Campaign Leaders, Friends in Inaugural Year

*Honor Roll of Donors . . . . . 19*  
Our Annual Tribute to Thousands of Generous Supporters

**ALUMNI NOTES . . . . . 33**  
Author Joanne Fluke Publishes Two Novels

**CALENDAR . . . . . 37**  
Jazz Ensemble Holds Pre-Holiday Concert



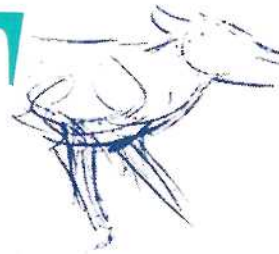
*Beauty,*

BEAST'S



*the*

BIOLOGIST



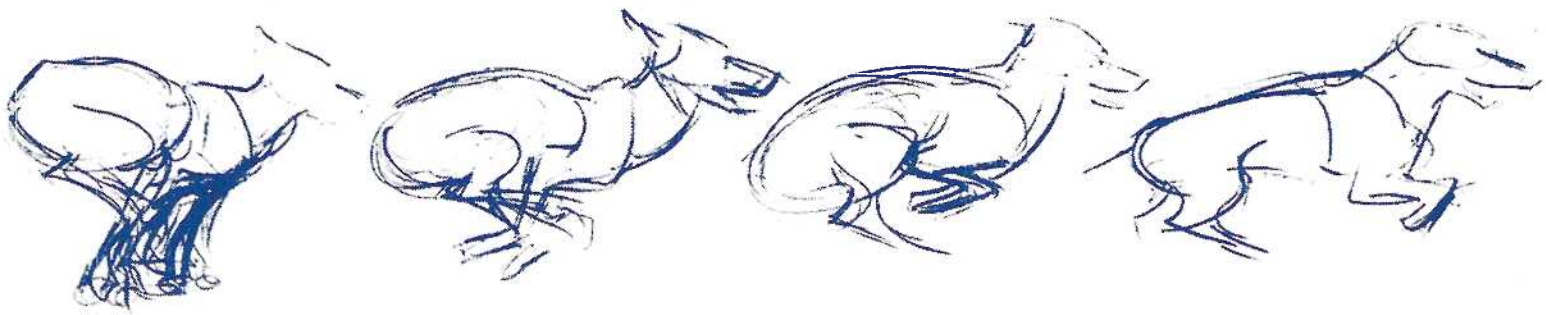
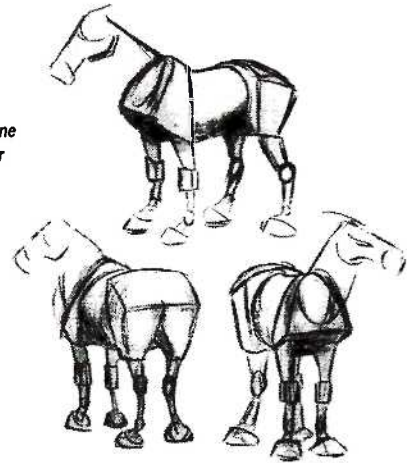
**THE MAN WHO SEES  
BEAUTY  
IN ANIMAL  
LOCOMOTION**



Not very long ago, in a land not too far away, professional animators began to envy Cal State biology professor Stuart Sumida, whose job, they said, was very wonderful. Stuart admired the animators and their jobs, too. For they worked in the pleasant and prestigious Walt Disney studios sketching out pictures that always became famous. But no, no, no, thought the animators. It was Stuart who had the fun of hunting hidden treasures in places like the four corner states of Colorado, New Mexico, Utah and Arizona, or in Germany, where Stuart spent six weeks this

## HOW TO BUILD A HORSE

Horse sketches done by Disney animator Russ Edmunds.

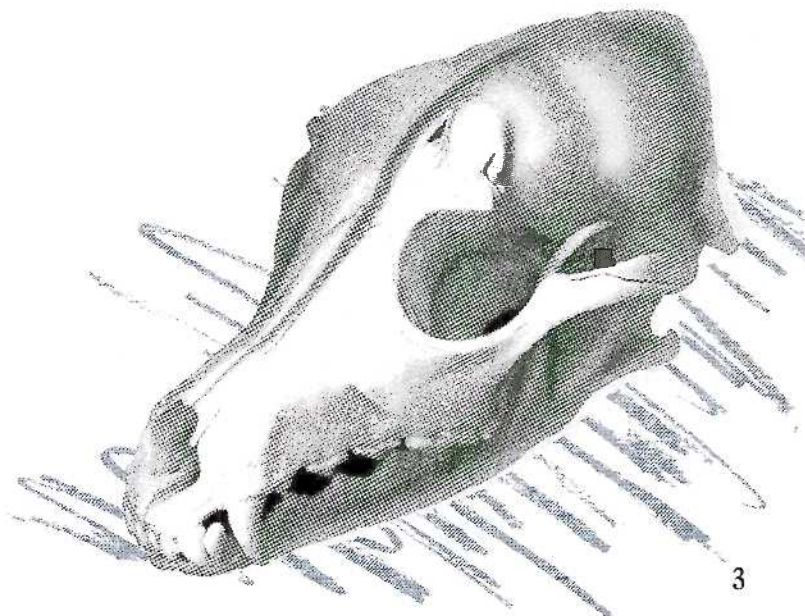


past summer. Treasure hunting like this impressed the animators. Because once upon a paleontological period ancient animals left for Stuart and those with his brand of curiosity a very special gift, the most special gift beasts could ever leave: Bones.

"There are a lot of paleontologists who use the fossils they find to figure out the rocks," says Stuart. "Well, I use the fossils I find to figure out the animals."

Stuart is the Bone Man to Disney artists, their "teacher," the specialist in comparative anatomy who stepped into Animation Land on the reference of a friend and an invitation by Disney and had world-class animators draw, ahem, anatomy! He is the man who sees beauty in animal locomotion, who illustrates his research with his own (improving, even if they are diagrammatical) drawings of animals, who has liked and watched good cartoons ever since he was a boy, who tells animators how a bird folds its wings, and maybe how they, the animators, err in thinking that digging up the

**THE MOST SPECIAL GIFT  
BEASTS COULD  
EVER  
LEAVE  
ARE  
BONES**




**STUART BEGAN SHOWING THEM HOW  
SIZE, WEIGHT,  
GRAVITY AND  
BONE  
STRUCTURE  
SHAPE AN  
ANIMAL'S  
MOVEMENTS**

past is glamorous work; fascinating, yes. But picking your way through dirt around a valued fossil can be as tedious as drawing a thousand pictures to animate a descending leaf.

Disney animators, says Stuart, are "meticulous." Experts have come to lecture them before. But under a formal program set up in the late '80s Disney wanted to train new as well as experienced animators, and that's when Stuart began showing them how size, weight, gravity and bone structure shape an animal's movements. For one week during the production of "Beauty and the Beast," he lectured on

*Pencil sketches by Disney animator Larry White are his first pass at an analysis of a wolf run used to animate the wolves in "Beauty and the Beast."*

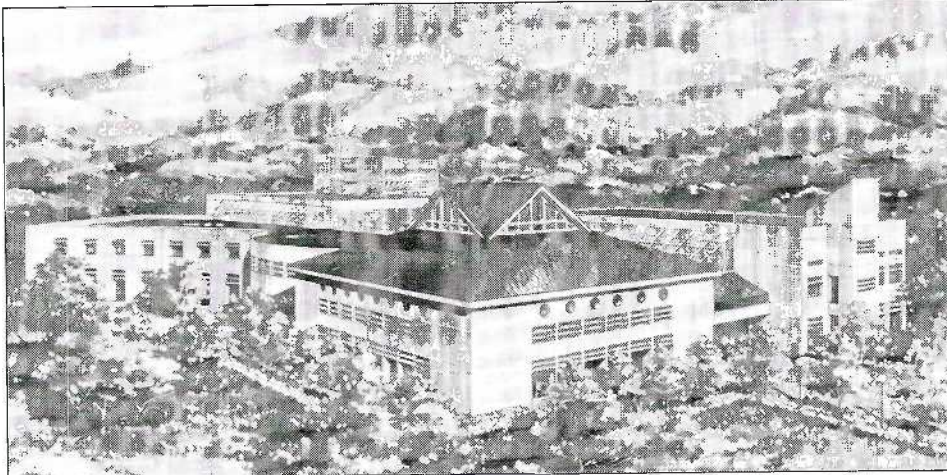
wolves and horses, and worked closely with Russ Edmunds, the lead animator for Belle's horse, Philippe—Disney animation that amazes Stuart, as does the detail of Bambi, the dinosaurs of "Fantasia," and, above all, the flight of the golden eagle in "Rescuers Down Under," because its "movement is true to the form of the animal, yet communicates personality and feeling without turning into a human being." Stuart now is advising Disney animators on a film to be released next year, "Lion King." And next year he will address the 50th anniversary convention of the National Science Teachers Association in Anaheim about his work at Disney, and about this fairytale marriage of biology and fine art.

"You need to understand some of the biological sciences to do certain kinds of art. That's something most biologists wouldn't think about, or they've been trained not to think about." 

*Story by Sam Romero, editorial assistant, Public Affairs. Photos of Stuart Sumida were taken by Larry Rose. Photos from "Beauty and the Beast" motion picture are printed by permission of Disney, and are copyrighted by The Walt Disney Company. All rights reserved.*



## LARGEST CASH DONATION LAUNCHES BUILDING



The first portion of the three-phase building for Extended Education will be built next year with a gift from Yasuda Women's University in Japan.

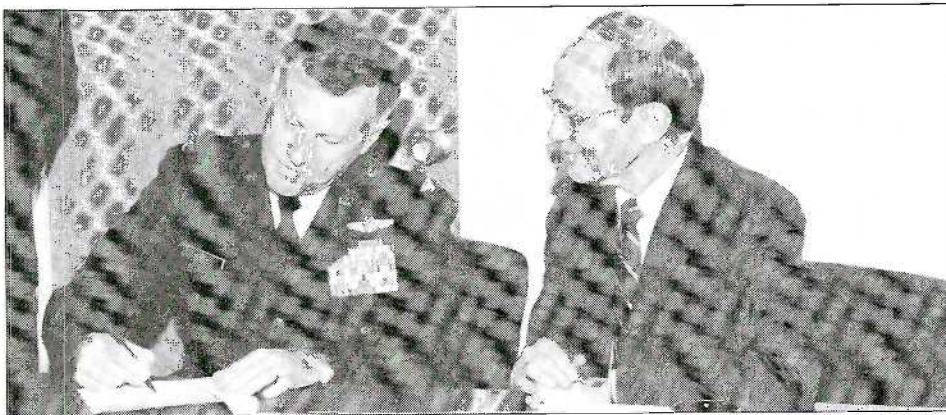
A donation of 100 million yen, which is approximately \$925,000, will "seed" the construction of a new Extended Education building at Cal State, thanks to the Yasuda Institute of Education in Hiroshima, Japan.

The largest single, private cash contribution received to date by the university underscores the partnership between the two educational institutions that have been working together for seven years through the Office of Extended Education's American Culture and Lan-

guage Program (ACLP) at Cal State.

Work on the 15,600-square-foot edifice, that will be located north of the campus's Foundation Building, is expected to break ground in January and take about one year to complete. The remainder of the funding for the \$2.2 million project will be obtained through a privately financed loan secured by the university's Foundation. The new building will house five classrooms, language and computer laboratories, and a student lounge and patio.

## AFROTC ESTABLISHES REGIONAL PROFILE WITH NEW CSUSB UNIT



President Evans (right) joins alumnus Col. Ed Sheeran in welcoming the Air Force ROTC to campus.

The first Air Force Officers' Training Corps program in inland Southern California is being established this fall at Cal State, creating a nearby opportunity for military training that previously was available only in Los Angeles and San Diego.

With a military identity already established in the Inland Empire, the Air Force ROTC program will draw its en-

rollment from the eastern valley, says Col. Ed Sheeran, commander of the southwest region of Air Force ROTC and a CSUSB alumnus, class of '67.

Students in virtually every field of study are eligible for the program that offers two- and four-year processes leading to a bachelor's degree. A class of about 30 students has been recruited for the initial year of the program.

## CAMPUS PLANT EXPANDS TO MEET 21ST CENTURY NEEDS

An ambitious plan for \$172 million in capital construction projects at CSUSB in the next five years will more than double the amount of physical space currently housing classes and community gatherings at the university.

Two of the major expansion projects were completed this summer and overall about half of the budgeted construction work is underway.

Students, alumni and community guests will notice the advantages of the \$5 million Student Union addition that opens this fall. The facility features a new multi-purpose room that accommodates 1,000 guests for special events.


Jack H. Brown Hall also will open this fall as the new home of the School of Business and Public Administration plus the departments of mathematics and computer science.

Also making its debut this fall will be an expansion of the university Bookstore, creating a split-level merchandising area and reorganized textbook sales area.

At the midway point in construction this fall will be the health and physical education complex, destined to become the largest building on campus. Featuring the 5,000-seat James and Arianthi Coussoulis Arena, the building will offer a multitude of recreational and entertainment opportunities for the Inland Empire once the facility is completed in 1994.

Passed the half-way mark is the Pfau Library addition, which extends an expansive wing to the left of the existing structure. The five-story addition is expected to reach completion this December.

Among the projects awaiting construction is a new Visual Arts Complex that proposes to include a 4,000-square-foot museum, if private funding is secured for the project by early 1994.

Expansion of the university's physical plant is helping to ease overcrowded conditions for the university's 12,500 students and nearly 1,000 employees and preparing Cal State to meet the needs of more than 20,000 students and 4 million citizens in the 21st century. 



## SCHOOL OF BUSINESS AND PUBLIC ADMINISTRATION



Sue Greenfeld teaching in Taiwan

**Russell Beirich** (Accounting and Finance) has been named the 1993 Accountant Advocate of the Year by the U.S. Small Business Administration. A part-time instructor here, he is a partner in the accounting firm of Lund and Guttry in Palm Springs.

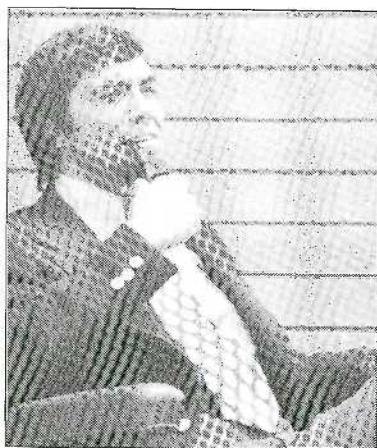
**Sue Greenfeld** (Management) is teaching at one of the top two business schools in Taiwan, the National Chengchi University in Taipei. While there on her Fulbright Fellowship, she hopes to conduct in-depth critiques of companies in that country, much like those she has performed with colleague **Harold Dyck** (Information and Decision Sciences) here. Most recently they evaluated Mobil Chemical. The two business professors also are in the midst of collaborating on research of the attitudes toward and socioeconomic effects of the free trade arrangements proposed between the U.S. and Mexico.

**Hal Hoverland** (Accounting and Finance), the founding dean of the School of Business and Public Administration, retired from CSUSB after 20 years of service. In honor of his 12 years of leadership as dean, the Hal Hoverland Scholarship Endowment Fund has been established to benefit junior and senior accounting students. Those wishing to contribute to the scholarship may send their gift in care of the CSUSB Foundation, 5500 University Parkway, San Bernardino, CA 92407.

**Nabil Razzouk** (Marketing) reports that seven CSUSB graduates majoring in business have taken management training jobs with WalMart corporation in recent months. He adds that it probably doesn't hurt that the company's regional employment recruiter **Michelle Harbauer** (B.S. administration '91) has the same alma mater.

**Mary Smith** (Marketing) collaborated with three authors on a study of "Mail Survey Response Rates Using a Lottery Prize Giveaway Incentive," which was published in the *Journal of Direct Marketing*.

Five CSUSB students swept a summer Inland Empire research paper competition and went on to compete with entrants from 12 universities in a regional contest of the American Production and Inventory Control Society (APICS), reports **Javad Varzandeh** (Information and Decision Sciences). Earning first-place awards were graduate student **Carolyn Bartowski-Arabatzus** of Redlands and undergraduate student **Patti Stephens** of Victorville. Second-place honors were awarded to graduate student **Sharon Dragan** of Upland, and undergraduate **Kai-Ing Hwang** of Colton. A third-place was bestowed upon **John Cuevas** of Riverside. CSUSB associate professors **Kamvar Farahbod** and **Harold Dyck** (Information and Decision Sciences) are local chapter advisors.



Hal Hoverland in his early years as dean

LEWIS  
ASSUMES  
DEANSHIP

Professor and chair for the Accounting and Finance Department, **Eldon Lewis** is the interim dean for the School of Business and Public Administration for the next two years. Succeeding **David Porter**, who accepted a position at the University of Fairbanks, Alaska, Lewis will oversee the school's move into Jack Brown Hall and the completion of the American Assembly of Collegiate Schools of Business (AACSB) accreditation process. When he was a dean at Wichita State University, he was involved in a similar process, which, coincidentally, also preceded moving into a new building.

Stepping into the position of acting chair of the Accounting and Finance Department will be **Linvol Henry**, an associate professor who's been with the university for eight years. He will serve for one year while a search for a permanent appointee is conducted, Lewis says.



## SCHOOL OF EDUCATION

**Margaret Atwell** (Advanced Studies) is leaving CSUSB after 12 years of service to accept the position of associate vice president for academic affairs at Cal State, Fullerton. She was CSUSB's Outstanding Professor in 1987.

As chair of the Council of Scientific Society Presidents, **Bonnie Brunkhorst** (Secondary/Vocational Education, Geological Sciences) testified before a subcommittee of the U.S. House of Representatives' Appropriations Committee urging support for President Clinton's \$3.18 billion budget for the National Science Foundation.

While the teaching-reform book, *Making Connections: Teaching and the Human Brain*, co-authored by **Renate Caine** (Secondary/Vocational Education) and Geoffrey Caine is setting precedent with a circulation of 136,000 for its first printing, Renate's work at the Cal State Center for Research and Integrative Learning and Teaching has attracted several installments of a grant from the Yucaipa-Calimesa Joint Unified School District to provide for her to be an ongoing coach at Park View Middle School in Yucaipa.

**Sherrie Howie** (Secondary/Vocational Education) is teaching under a Fulbright Fellowship at National Kaohsiung Normal University in southern Taiwan this year. She plans to research cooperative learning techniques in classes designed to help prospective teachers use computers in their lessons.

**Adria Klein** (Advanced Studies) is the newly elected vice president for the 17,000-member California Reading Association (CRA) and will serve as its president in 1995-96.

**Ken Lane** (Advanced Studies) was awarded the Outstanding Alumnus honor by his doctoral alma mater, East Texas State University. He also was honored in April by Technomics Publishing for his work as an associate editor for the *Journal of School Leadership*.

**Darleen Stoner** (Environmental Education) is the 1993 Distinguished Alumnus from the College of Science at Cal Poly, Pomona.



Margaret Atwell heads for CSU Fullerton



Sherrie Howie on a fellowship in Taiwan

## STUDENTS NAB STATE HONORS

Three CSUSB students walked away with second-place honors in the CSU's annual research competition held this year on the Fullerton campus in early May. Competing with 130 entrants in 10 categories, the CSUSB winners were graduate students **Eileene Payne** and **William Thomas**, while **Shannon Lynne Shannon** captured the honor at the undergraduate level. Payne looked at head-banging behavior in her report, "Analysis and Intervention Issues Related to the Self-Injurious Behavior in a Blind, Multiply Impaired Child." Her work was supervised by **Joanne Eichinger** (Advanced Studies). Thomas worked with **Jeffrey Thompson** (Biology) on the "Effect of 60HZ, 1 Gauss Magnetic Field on Neuropeptide Y Gene Expression." Shannon's research focused on a specific statement of financial accounting standards and the implications for employers as well as employees. She was guided by **Christine Shalow** (Accounting and Finance).



Pictured left to right, Eileene Payne, William Thomas, and Shannon Lynne Shannon



## SCHOOL OF HUMANITIES



Art Moorefield continues 16th century research

A collection of plays and working scripts has been donated by the world-class magic team of Gay and Harry Blackstone, Jr., establishing a library of reference materials for the university's Theatre Arts Department. Dedicated in the name and memory of their son, the Harry B. Blackstone III Collection eventually will include scripts from film, theatre and television. The accessibility of materials will be a boon to students, faculty and those in the general public who are interested in writing, acting and directing, says **Ron Barnes** (Theatre Arts). Gay once was a student of Barnes. The Blackstones, who are inviting the support of friends and business associates, recently received a \$1,000 donation for the collection.

**Jim Brown** (English) published an essay on autobiography and fiction, entitled, "My Papa's Waltz," in *The Cream City Review*, the literary magazine of the University of Wisconsin-Milwaukee.

A 10-foot tall bronze sculpture, interpreting a heron taking flight, was commissioned by Yasuda Women's University in Hiroshima, Japan and rendered by **Richard Johnston** (Art) for the Sept. 3 dedication of a new classroom building at the Japanese institute.

"Dancing to the Chorales: The 1550 Geistliche Ringeltentze of Valten Vogt" is the subject of a paper presented by **Art Moorefield** (Music) at a joint chapter meeting of the American Musicological Society.

**Rodney Simard** and **Julie Abner** (English) co-wrote the paper, "Hollywood Paradigm and Cultural Stereotype: 'Captain Jack,' the Modoc 'Wars,' 'Drum Beat, and Indians in Mid-Century Film," which was presented at the California Indians Conference.

**Ed White** (English) was recognized by the San Bernardino Area Chamber of Commerce as one of two outstanding professors at Cal State in the annual College Professors' Honors Breakfast this past spring. He also has been elected to a three-year term on the executive committee of the Conference on College Composition and Communication.



Ed White honored by Chamber of Commerce



A \$560,000 University Art Museum could be built in 1994 if the remaining half of the necessary private financing is secured.

## MUSEUM HINGES ON PRIVATE FUNDING

A 4,000-square-foot University Art Museum, designed to house permanent collections as well as new and changing exhibitions, could be built concurrently with a visual arts classroom complex, if sufficient private funding is found by early 1994. More information is found in Gift Rap on page 14.



## SCHOOL OF NATURAL SCIENCES

**Kimberley Cousins** (Chemistry) has received a \$32,200 award from the Research Corporation to assist her in the development of polymer-bond organoaluminum reagents for organic synthesis.

**George Georgiou** (Computer Science) collaborated on the article, "Complex Domain Backpropagation," for the *IEEE Transactions on Circuits and Systems II: Analog and Digital Signal Processing*.

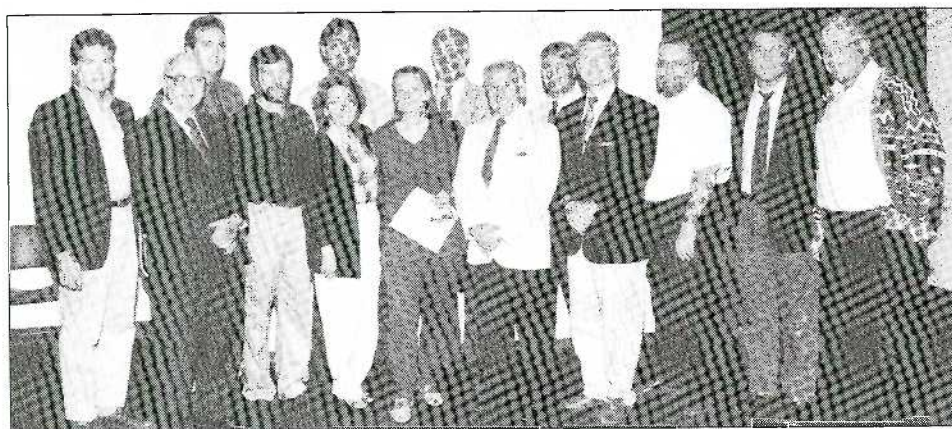
**John Sarli** (Mathematics) is collaborating with **Javier Torner** (Physics) on research that describes an algebraic construction they have discovered for elastic displacement fields, which is analogous to the complex analytic function representation for harmonic vector fields.

**Jeffrey Thompson** (Biology) collaborated with a professor from the University of Illinois-Urbana on the article, "Morphological Comparison by Scanning Electron Microscopy of Transient Retina-Muscle Synapses and Long-Lived Spinal Cord-Muscle Synapses," for *Cellular and Molecular Biology*.

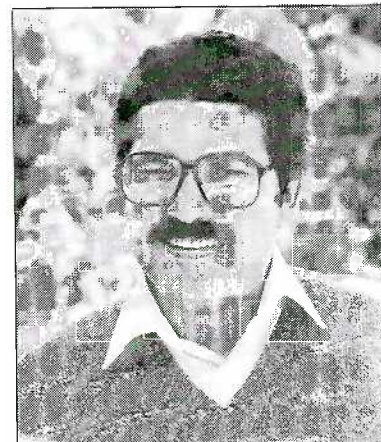
"Smoking Cessation: Clinical Steps to Improve Compliance" is an article that **Thomas Timmreck** (Health Science and Human Ecology) co-authored for the journal *Geriatrics*.

**Ching-Hua Wang** (Biology) co-authored the "Characterization of Cellular and Molecular Immune Effectors Against *Trichinella spiralis* Newborn Larvae in Vivo" for the journal of Cellular and Molecular Biology.

"Hybrid Dynamic Markov Modeling" was the subject of a paper presented by **Tong Lai Yu** (Computer Science) at the IEEE Data Compression Conference.



Sixteen faculty and staff authors were honored in the spring by their colleagues and administrators for their published books. Pictured here are (front row, left to right): Art Moorefield (Music), Frank Williams and Marilyn McShane (Criminal Justice), Linda Stockham (Anthropology), Norton Marks (Marketing) and Robert Yowell (Theatre Arts). In the back are Larry McFatter (Music), Ken Lane (Education), Robert Blackey (History), Leo Connolly (Physics), Bill Camp (Education), Michael Burgess (Library), Stanley Schwartz (Education) and Ed White (English). Not pictured is faculty emeritus Bill Slout (Theatre Arts).



Javier Torner collaborates on complex research

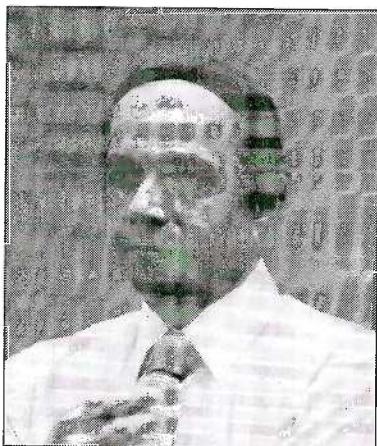
ALUMNA SPOTLIGHTED  
IN TEXTBOOK

**Patricia Lough**, (B.S. '78, M.S. biology '90) who holds two degrees from CSUSB, was highlighted in a new edition of the textbook, *Biology*, for her work as a forensic scientist—also known as a criminalist—for the San Bernardino County Sheriff's Department. Applying her knowledge in biology, **Lough** first trained in the alcohol and narcotics section and has gone on to investigate major crimes that involve sexual assault. She contributes special expertise in bloodstain pattern interpretation.

Profiled in the "Career Visions" section of the book, Lough says that "helping people is a very real part of my job. I feel that I provide a benefit to my community, and a real service to that victim sitting at home waiting for tests to be run. I can't think of any occupation in the sciences that deals so directly with human life."



# SCHOOL OF SOCIAL AND BEHAVIORAL SCIENCES



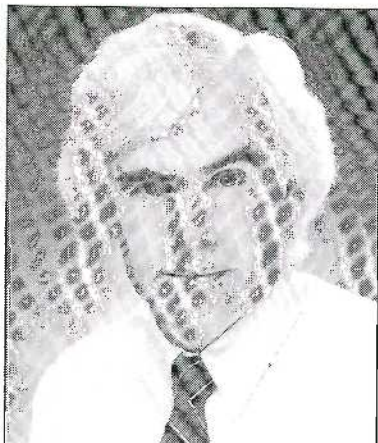
Brij Khare is chief mentor of winning U.N. team

**Elliott Barkan** (History) spoke on "Defining American Ethnicity: E Pluribus Unum et Plures" at the meeting of the Norwegian Historical Association.

**Wally Cleaves** (Psychology) is on a one-year sabbatical, teaching at UCLA and continuing his research on issues affecting Native American citizens.

**Brij Khare** and **Ralph Salmi** (Political Science) are glowing over Cal State's winning Model United Nations team, which topped universities from around the world in this spring's competition. Representing the Islamic Republic of Iran during the contest, CSUSB's team of 16 students earned the Outstanding Delegation award.

**Thomas Lyons** (Geography/Urban Planning) is in the process of reporting the results of his national study of the economic development effects of rural business incubators.



Tom Pierce presents findings to association

All four prestigious campus awards (Outstanding Professor, Outstanding Graduate and Undergraduate Students and the Distinguished Alumnus) were captured by the School of Social and Behavioral Sciences this year. Joining the outstanding professor, **Dr. Ward McAfee** (History), on the Commencement platform were two psychology majors who earned the outstanding students distinction. They were **Jill Kuhn**, a graduate student from Redlands, who is on her way to Colorado State University to begin work on a doctorate. The outstanding undergraduate was **Suzanne Reid** of Apple Valley who also is the reigning Miss Victorville Ambassador. Alumnus **Wesley Krause** (M.A. criminal justice '90) is a probation officer in the High Desert, where he has distinguished himself with innovative case management techniques. He continues to work closely with **Marilyn McShane** (Criminal Justice), co-authoring books and articles on new developments in his field.

**Teresa Morris** (Social Work) published "Teaching Social Workers Research Methods: Orthodox Doctrine, Heresy or an Atheistic Compromise" in the *Journal of Teaching in Social Work*.

**Tom Pierce** (Economics) presented "Determinants of Individual FOMC Members' Voting Behavior," an article that he co-authored, at the annual meeting of the Western Economic Association.

**Peter Robertshaw** (Anthropology) published the article, "Gogo Falls: Excavations at a Complex Archaeological Site East of Lake Victoria," in the journal *Azania*.

## DOCTORS IN THE MAKING

Pictured from left to right, Virginia Moran of Hesperia, Winifred Scott of San Bernardino and Sandy Magana of Victorville are working on Ph.D.s this fall following graduation from Cal State. Moran has received a sizable scholarship to attend the Claremont Graduate Schools for a doctorate in psychology, while the latter two are among 128 students in the California State University system selected to receive awards from the CSU's Forgivable Loan/Doctoral Incentive Program. Scott is attending Florida State studying business management and accounting, while Magana is working on a doctorate in social work at USC. Under the CSU program, they are expected to return to the Cal State system to teach once they complete their terminal degree.





## COACHELLA VALLEY CAMPUS

## MORE THAN ONE HUNDRED GRADUATE

About 88 of the 125 students eligible to "turn their tassels" at Commencement did so at the Coachella Valley Campus's ceremony at the McCallum Theater in Palm Desert. The 1,000-seat theater nearly was filled with families and friends of graduates, reports Dean Peter Wilson. This was the third year that the campus held a ceremony separate from the San Bernardino campus's tradition.

## DEGREE OPTIONS EXPAND

The accounting concentration in the business administration bachelor's degree program plus two new options for graduate-level degrees in education are being offered this fall at the Coachella Valley Campus.

The introductory accounting course will be taught on the San Bernardino main campus and broadcast at the Coachella Valley Campus over the university's two-way instructional television system, says Peter Wilson, dean.

Reading and special education will be the emphases offered in the master's degree programs, he adds, noting that reading classes offered last spring were over-enrolled due to high interest in the program.


## REFINING DISTANCE LEARNING

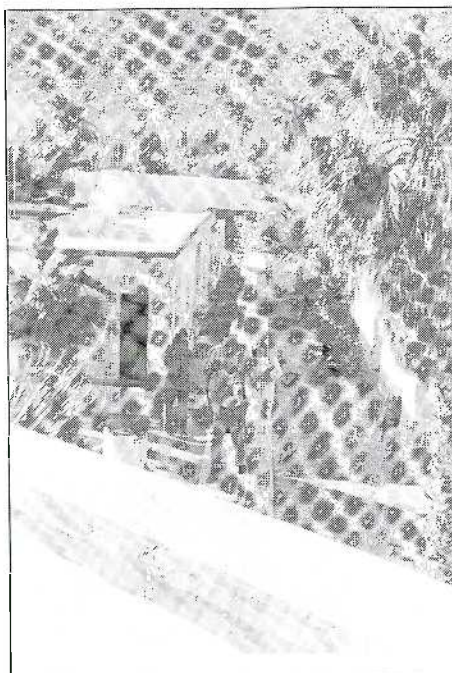
Work is underway to establish video-conferencing capabilities between the San Bernardino and Coachella Valley campuses in order to refine the delivery of distance learning services to low desert students, reports Peter Wilson, dean of the CVC. Currently some classes are carried over an instructional television system that sends a one-way video signal to the Coachella campus's classrooms and permits a two-way audio interaction between the professor at the San Bernardino campus and students at the low desert site.

With the more sophisticated video-conferencing technology, "the professor will be able to see as well as hear the students here," Wilson says. University officials are looking for funds to assist in installing a teleconferencing studio at both campuses within the next year.

## NEW LOOK, NEW SPACE

Housed in modular buildings on the College of the Desert campus, the Cal State Coachella Valley Campus is getting new "digs." The original buildings, which had been leased by the university, are being replaced through a lease-purchase agreement that will mature in five years, says David DeMauro, vice president for administration and finance. The buildings then will become the property of Cal State, he adds.

The switch in facilities allows the university to design the space to better suit the needs of the students, faculty and staff at the Coachella Valley Campus, notes Peter Wilson, dean. "Originally when the campus was established it was hard to tell what space we would need for labs and classes, so this redesigned space will be much more effective," Wilson remarks. 



## COMMUNITY ADVISORY BOARD EXPANDS

Dr. Dolores Ballesteros, superintendent for the Desert Sands Unified School District, Chuck Cervello of GTE in Indio and Richard Daniels, president and chief executive officer for Mine Reclamation Corp. in Palm Springs, are the newest appointees to the advisory board for the Cal State campus in Palm Desert.

*Dr. Dolores Ballesteros**Chuck Cervello**Richard Daniels*



## Center Chevrolet & Geo Joins Corporate Sponsors

Center Chevrolet & Geo recently joined the growing list of corporate sponsors of the Cal State, San Bernardino Intercollegiate Athletics Department. Other Coyote corporate sponsors include restaurants, hotels and apartment complexes.

Located on South "E" Street in San Bernardino, Center Chevrolet & Geo will be involved with many promotions throughout the upcoming athletic season, including half-time promotions during men's basketball games.

"We welcome the addition of Center Chevrolet & Geo to our corporate family," states David Suenram, Cal State athletics director. "We look forward to Center's involvement and to working with Center on a long-term, mutually rewarding relationship."

As a corporate Gold Sponsor, Center Chevrolet & Geo will receive recognition as an "Official Auto Dealership of the Coyotes."

## Basketball's Fast Break Club Off to Quick Start

The men's basketball booster club, better known as the Fast Break Club, is quickly building momentum toward the start of the 1993-94 basketball season.

President Gerald Brown, an international businessman, and the members of the Fast Break Club have been meeting on a regular basis to discuss and develop support programs that will help Coach Reggie Morris and the members of the Coyotes' basketball team as they prepare to take on the CCAA Conference.

Anyone interested in joining the Fast Break Club is encouraged to contact the Cal State Athletics Department at (909) 880-5011.

## Scholarship Golf Tourney Oct. 22 in Rialto

The annual Coyote Golf Classic, benefiting athletic scholarships, is set for Oct. 22 at El Rancho Verde Country Club in Rialto.

Last year's tournament netted more than \$10,000 for scholarships. This year's event is expected to double that amount and add breadth to the athletics scholarship fund at CSUSB.

"We are building on the success of last year's tournament," comments Max Alonzo, tournament chair. "We're hopeful that this year's event will be the biggest and best in the tournament's history."

The Two-Man Best Ball tournament will tee off at 8:30 a.m. using a shotgun format. The tournament will be followed by an award luncheon in the clubhouse.

The cost for participating in the tournament is \$125 per person and includes a continental breakfast, greens fee and cart, and the awards luncheon.

Interested persons should contact the Athletics Department (909) 880-5011.

## 1992-93 Coyote Sports in Review

### MEN'S SOCCER

Frank Felix, Rolando Uribe and Robert Pedace were named to the NCAA Far-West Regional Team.

Robert Pedace was named to the CCAA All-Conference First Team and Scholastic All-Conference.

Rolando Uribe and Tony Rossi were named to the CCAA All-Conference Second Team.

### WOMEN'S SOCCER

Jackie Powers earned NCAA All-American distinction and was named to the CCAA All-Conference First Team and the NCAA Western Regional Team.

Kelli Brew was named to the CCAA All-Conference First Team.

Brandi Singleton, Alicia Scott, Pam Davenport and Merinda Tenace were named to the CCAA All-Conference Second Team.

### WOMEN'S VOLLEYBALL

Cindy Bench was named to the CCAA All-Conference Team.

### MEN'S BASKETBALL

The Coyotes led the CCAA in scoring (Develle Walker), rebounds (Orlando Robinson) and three-point shots (Anthony Thomas).

Develle Walker was named to the All-West Regional Team.

Orlando Robinson and Develle Walker were named to the CCAA All-Conference First Team.

### WOMEN'S BASKETBALL

The team went up against conference power Cal Poly, Pomona for the CCAA title.

Luvina Beckley was named CCAA Women's Basketball Coach of the Year.

Kelly O'Brien was named to the CCAA All-Conference First Team.

Kim Young was named to the CCAA All-Conference Second Team.

### BASEBALL

Robert Smith and John Smith were named to the CCAA All-Conference First Team.

Jason Lyman was selected in the amateur draft by the Cleveland Indians.

Robert Smith was named to the NCAA Western Regional First Team.

Nationally, the Coyotes placed 4th in doubles, 12th in slugging percentage, 18th in home runs and 23rd in overall batting average, and they broke school records in doubles, triples and home runs.

### SOFTBALL

Felicia Harral and Erica Kilgore were named to the CCAA All-Conference First Team.

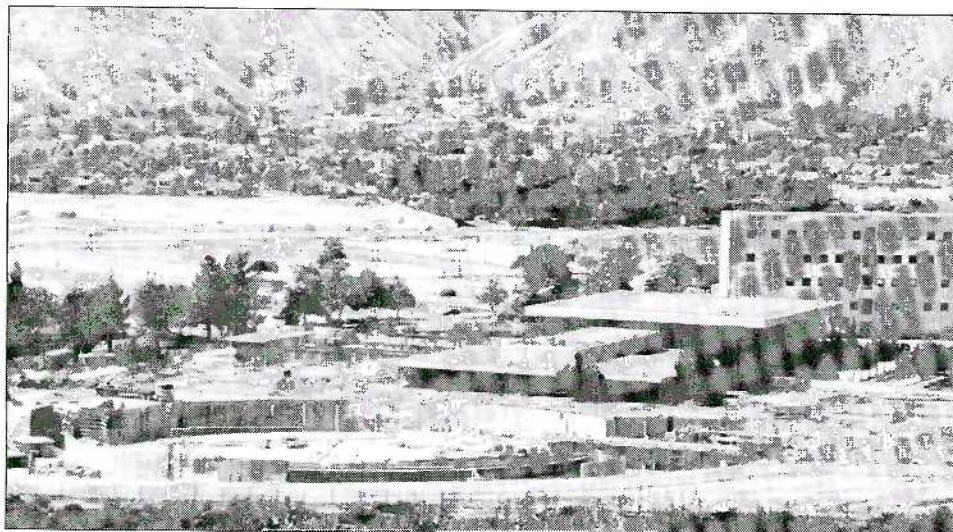
Erica Kilgore was named to the NCAA Western Regional Second Team.

### GOLF

The team ranked third in the Western Region.

Greg Wilson earned the distinction of Scholastic All-American by the Golf Coaches Association of America.

Greg Wilson competed in the NCAA Division II National Tournament and tied for 50th place.



Out of the earth—Arising north of the existing Cal State gymnasium and the new Jack H. Brown Hall, CSUSB's Health and Physical Education Complex (foreground) impresses even the most casual observer with the magnitude of its scope. Setting precedent as the largest sports arena in the Inland Empire, the complex—brandishing the 5,000-seat James and Arianthi Coussoulis Arena—also will become the largest building on the campus when it opens with the university's 10th sports season next fall.



## Pioneering Grad Makes History

The first woman president of City College of New York, Dr. Yolanda Moses (B.A. sociology '68), headed there in August, straight from her position as vice president for academic affairs at CSU Dominguez Hills. Prior to that position, she had been the dean of the School of Arts at Cal Poly Pomona for five years.

Moses is a Life Member of the Alumni Association here and the winner of the 1983 Distinguished Alumni Award given by the Association.

### New Identity for Alumni Association



Thanks to a talented graphic designer at Cal State, Jay Wampler, and the efforts of several members of your Board of Directors, a new logo has replaced the old. The desire to modernize our "look" and clearly associate it with an identifying factor of the university moved the committee to choose the stylized rendering of the mountains.

## Probation Officer Honored As Distinguished Alumnus

San Bernardino County Probation Officer Wesley Krause is the 1993 Distinguished Alumni Award winner chosen by a panel of alumni, faculty, and administrators on behalf of the Alumni Association.

Practicing in the field of probation for more than 20 years, Krause currently serves as the supervising probation officer responsible for all juvenile operations in the Victor Valley. He has come up through the ranks working first as a field officer investigating juvenile and adult cases and then later supervising them.

A Wrightwood resident, Krause is a 1990 graduate of CSUSB with a master's degree in criminal justice. He earned his undergraduate degree from UC Riverside in 1970. His work as a graduate student at Cal State and his scholarship pursuits since then prompted Dr. Marilyn McShane to nominate him for the award, which recognizes service to the community and university as well as career distinction.

## Alumni Encouraged to Make Use of Career Center

Alumni are welcome to take advantage of the range of services offered through the university's Career Development Center. If you have graduated within the past 90 days, you may use the center's resources free of charge; all other alumni must register with the center and pay a \$25 annual fee.

The Career Center's resources include job listings, career directories, an automated skills and values assessment system, career-related workshops and fairs that include recruitment opportunities, a quarterly newsletter and a placement file service. More information is available at (909) 880-5250.

### ALUMNI LEADERS RECOGNIZED

The Board of Directors is pleased to welcome two new members to the Board: Mavernie Mitchell '91 and Joyce Payne '67. Officers for the 1993-95 period are:

President: Jim Kennedy  
Vice President: Terry May  
Treasurer: Ken Miller  
Directors: Christopher Ahearn  
David Amori  
Bill Christelman  
Mavernie Mitchell  
Hank Ortiz

#### Serving as liaison for the chapters are:

Joyce Payne, African-American  
Donald Beard, Education  
Larry Buck, Business & Public Administration  
Marcia Lentz, Nursing  
Paul Mata, Hispanic  
Faculty Representative:  
Dr. Mary Andis  
School of Education

### Alumni Association Offers Benefits

In July, Alumni Association forms were sent out to over 16,000 alumni inviting you to take advantage of the benefits that derive from membership, including use of the Cal State Library and many of the other CSU libraries, insurance programs (vision, dental, and health), assistance from the Career Center, membership in both FEDCO and the San Bernardino County Central Credit Union, discount coupons for California attractions, as well as discounted tickets for theatrical and musical events at Cal State, plus much more.

Your membership in the Alumni Association not only benefits you but gives current students the assistance they need in the form of scholarships and student emergency loan funds because the association contributes to both of those causes. If you did not receive that membership brochure, or tossed it away and then changed your mind, you may use the coupon below to join.

### CSUSB ALUMNI ASSOCIATION MEMBERSHIP FORM

Name \_\_\_\_\_  
Former Name (if applicable) \_\_\_\_\_  
Address \_\_\_\_\_  
City, State, Zip \_\_\_\_\_  
Home Phone \_\_\_\_\_ Business Phone \_\_\_\_\_  
Social Security # \_\_\_\_\_  
Year of degree and major \_\_\_\_\_

- |  |                    |
|--|--------------------|
| <input type="checkbox"/> Payment Enclosed  | Charge my:         |
| <input type="checkbox"/> \$14 New Graduates (1992-93)  | Visa # _____       |
| <input type="checkbox"/> \$20 Annual Single  | Mastercard # _____ |
| <input type="checkbox"/> \$30 Annual Joint   | Exp. Date _____    |
| (both are alumni)  | Signature _____    |
| <input type="checkbox"/> \$500 Lifetime Single   |                    |
| <input type="checkbox"/> \$750 Lifetime Joint  |                    |
| <input type="checkbox"/> Please let me know how I can help at Commencement on June 18, 1994. |                    |

Make your check payable to the CSUSB Alumni Association, California State University, San Bernardino, 5500 University Parkway, San Bernardino, CA 92407-2397. Your membership helps provide student scholarships.

9/93



HALF OF THE PRIVATE FUNDS NEEDED HAS BEEN RAISED

# FOUR MONTHS REMAIN TO FUND UNIVERSITY ART MUSEUM

A privately financed University Art Museum, that could be built concurrently with a state-funded visual arts classroom complex in early 1994, is attracting noteworthy support from alumni, including community and business leaders and arts patrons, with approximately half of the funding donated toward the project as of early August.

The entire funding for the 4,000-square-foot museum project must be secured by early 1994. The \$560,000 museum will save \$1 million if built in conjunction with the classroom complex, says Howard Grossman, chair of the University Art Museum campaign.

With the estimated cost reduced by two-thirds, "Clearly this is a savings worth achieving," remarks Grossman, who along with campaign vice chair, Dr. Don Iman, has made a generous contribution toward the museum. The initial campaign committee of 14 civic leaders and arts patrons had raised approximately \$200,000 for the project by mid-summer.

Because state funding rules do not allow the university to include the museum in the construction plans for the classroom complex, the university is engaging in this public-private partnership to establish a regional repository for local, regional & world-wide art.

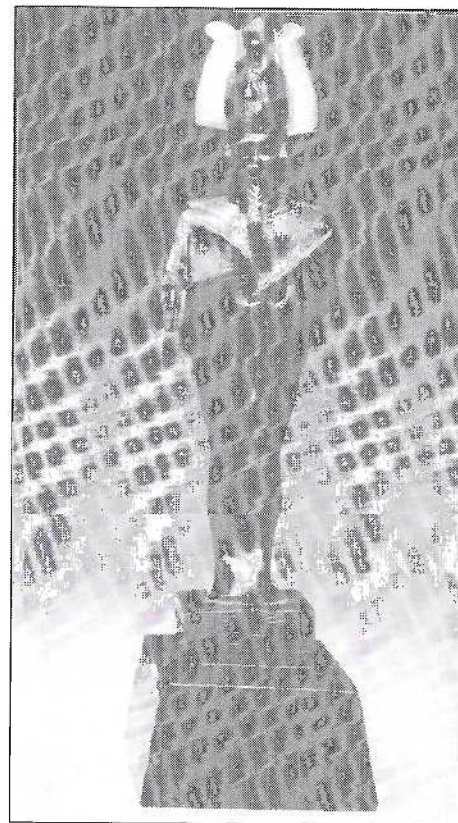
"I would like to have a local museum for Inland Empire school children, families and arts patrons as well as Cal State

students, faculty and staff to visit and be able to study and learn in their own backyard," Grossman says, explaining his enthusiasm for the campaign.

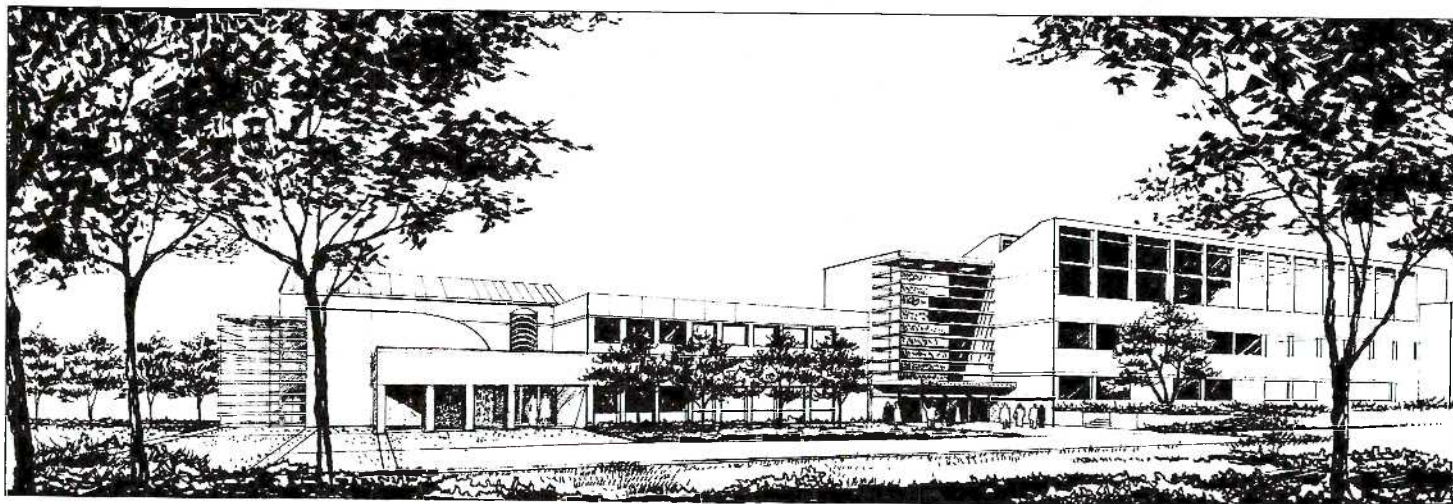
Recognition will be given to all gifts of \$2,000 or more with inscriptions on the major donor wall in the museum lobby. The "Founders" category will acknowledge contributions of \$15,000 or more. Other opportunities exist for donor recognition in the University Art Museum and the classroom complex, including the naming of facilities.

In addition to the campaign chairs, community members of the University Art Museum campaign committee are: Kat Grossman '83; Pamela Harer; W. Benson Harer, Jr., M.D.; Penny Hirschman; Mike Hough; Soonja Kim; Taewoong Kim, M.D.; Samuel Kushner; Jane Matthews; Pattie Pate '87; Cindy Rinne; Mignon Schweitzer; Nancy Sedlak and Ron Skipper. Also involved are Richard Johnston, Art Department chair and professor, and Stephen Christensen, director of major gifts and campaign director.

Volunteers are welcome to join the committee or participate in the campaign at any level, from the donation of art and fiscal resources, to the lending of time and assistance to support the University Art Museum project. Contact Richard Johnston at (909) 880-5823.



*Egyptian art from the Harer Family Trust collection as well as permanent holdings of the university would be showcased in the University Art Museum designed to be built with a visual arts classroom complex in 1994.*





## BUSINESS EXECUTIVES CHAIR FIVE CAMPAIGNS IN PARTNERSHIP 2000 EFFORT

## INFLUENTIAL CITIZENS ALIGN WITH UNIVERSITY

**PARTNERSHIP  
2000**

From a senior corporate vice president and a retired businessman to a real estate developer, a lawyer and a business owner, the professional credentials

of the campaign chairmen working under the university's Partnership 2000 fund-raising effort are illustrious.

Don Baker, group senior vice president for Stater Bros. Markets, was the earliest volunteer among the campaign chairs, joining the university's effort to engender public-private partnerships for the School of Business and Public Administration more than one year ago.

Howard Grossman, retired executive of TRW Corporation, is heading up the community fund-raising effort to build a University Art Museum at the same time that construction begins on a state-funded visual arts classroom complex. Don Iman, D.D.S., is serving as vice chair for this effort, which needs to secure the bulk of its donations by January 1994.

Coachella Valley developer, Richard Oliphant, who is the former mayor of Indian Wells, is leading the university's interest in securing land and funding for a permanent Cal State campus in the low desert. Currently, Cal State's Coachella Valley Campus is situated on the College of the Desert's grounds in Palm Desert. Cal State is embracing the interests of low desert citizens in establishing a more per-

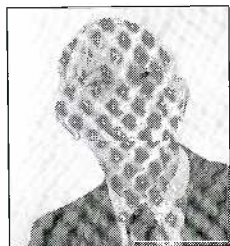
manent presence in the Coachella Valley.

San Bernardino attorney Wilfrid "Bill" Lemann is overseeing the fund drive for the Pfau Library, that is expanding with an additional wing and ultimate renovation. A native of San Bernardino, Lemann believes the university library is a "natural" information and technological resource for the region.

Spearheading the athletics fund-raising effort is Redlands businessman, Jeff Sykes, who is the president of Uniglobe Crown Travel. Sykes committed to the campaign as the university broke ground for its expansive health and physical education complex, which will feature a 5,000-seat arena that is the largest of its kind in the Inland Empire.



Don Baker



Howard Grossman



Richard Oliphant



Wilfrid "Bill" Lemann



Jeff Sykes

## FATE FOCUSES TEACHER'S INTERESTS ON CSUSB

## A SCHOLARSHIP FINDS A HOME

Clara McKinney's 60 years of devotion to teaching so inspired a cadre of admirers in her hometown of Barstow when she retired two years ago that they decided to mount a scholarship drive in her honor. Knowing her desire to help persons pursuing careers in early childhood education, they worked intensely for five months in order to present her with \$10,000 on her 88th birthday.

Since then McKinney has overseen the committee of volunteers who have been managing the fund and searching for an educational institution to administer it. Fate intervened this past spring when a student, Christina Tobiason, telephoned a friend of McKinney's during the university's Alumni Annual Fund Drive. Alumna Marilyn Van Norman (B.A. social sciences '72) encouraged

university officials to meet with McKinney regarding the Cal State education program.

Dean Jean Ramage and Pamela Langford, director of development, made a presentation to the Barstow committee, which was impressed with the depth of the education program and the university's plans to expand. McKinney, who is a graduate of the University of Redlands, subsequently chose Cal State as the home for her scholarship.

McKinney and the committee were pleased to "partner" with an institution that would value the contribution, notes Langford. "This is reflective of the collaborative effort of a current student, an alumna and the citizens served by Cal State," she remarks. "That's what the university's Partnership 2000 effort is all about."

VOLUNTEER RETIRED  
EXECUTIVES NEEDED

Share your expertise and time with Cal State, San Bernardino. Help ensure the finest academic experience for students by pairing your interests with specific academic units on the campus. Volunteer opportunities range from five to 20 hours per week. Activities include coordinating campus visits by local businesses, identifying and researching possible corporate partnerships or facilitating the introduction of faculty to key executives. Submit your letter of interest to: Stephen Christensen, director of major gifts, Cal State, San Bernardino, 5500 University Parkway, San Bernardino, CA 92407. Telephone for more information (909) 880-5006.



# C A M P A I G N

Launched in the Spring of 1992 and concluding in the year 2000, the Partnership 2000 campaign for Cal State, San Bernardino was established to ensure educational quality and opportunity, to broaden the university's areas of academic distinction, and to expand further its services to the region. Partnership 2000 embraces a public-private partnership between the university and the community. The first major multi-million dollar fund-raising effort on behalf of Cal State, San Bernardino, Partnership 2000 is focused on generating gifts and pledges required to allow the university to meet the immediate and growing demands of its students, faculty, alumni and the community. Designed to meet current and ongoing needs for scholarships, facilities enhancements and instructional equipment, for example, Partnership 2000 also provides a structure to secure support for future programmatic expansion.

## PARTNERSHIP 2000 CAMPAIGN CHAIRS

**THESE KEY LEADERS  
WILL BE JOINED BY OTHERS IN  
THE ENSUING YEARS AS THE  
UNIVERSITY EXPANDS ITS  
TARGETED CAMPAIGNS WITHIN  
PARTNERSHIP 2000**



**Richard Oliphant**  
*Chair of the campaign for the  
Coachella Valley Campus*



**Don Baker**  
*Chair of Business and  
Public Administration campaign*

## CAMPAIGN DONORS

The following generous donors have given to the Partnership 2000 campaigns and projects that include:

- School of Business and
- Public Administration
- University Art Museum
- Pfau Addition Library
- Supporters (PALS)
- Intercollegiate Athletics
- School of Natural Sciences
- School of Education
- School of Humanities
- Extended Education
- Financial Aid

### PRINCIPAL BENEFACTORS (\$500,000 AND ABOVE)

- Jack H. Brown \*
- Yasuda Institute of  
Education \*
- Nicholas J. Coussoulis '75 \*

### BENEFACTORS (\$100,000-\$499,999)

- Anonymous \*
- Herbert and Anna Jane  
Andrews \*

### PATRONS (\$50,000-\$99,999)

- Jane Matthews \*
- Food Industries Sales Club  
of Riverside and San  
Bernardino Counties \*

### LEADERSHIP GIFTS (\$25,000-\$49,999)

- Howard and Kat  
Grossman '83 \*
- James N. Kennedy '72, '77 \*
- Specialty Minerals Inc. \*
- Anthony H. and Lois Evans \*
- Donald and Pamella Iman \*

### MAJOR GIFTS (\$10,000-\$24,999)

- McGladrey & Pullen \*
- Dr. Irving Root \*
- Anne M. Ronning \*
- Dr. and Mrs. Taewoong  
Kim \*
- Judith and Glenn Rymer '70
- Wilfrid Cunningham Lemann

## PARTNERSHIP 2000 CAMPAIGN EXECUTIVE COMMITTEE MEMBERS

Don Baker  
Nicholas Coussoulis  
Bob Fullerton  
Howard Grossman  
Don Iman, D.D.S.

James Kennedy  
Wilfrid Lemann  
Linda Norman  
Richard Oliphant

Bob Percy  
Jeff Sykes  
Elise Traynum  
Bruce Varner



**Wilfrid "Bill" Lemann**  
Chair of the Pfau Library  
campaign



**Howard Grossman**  
Chair of the University Art Museum  
campaign



**Jeffrey Sykes**  
Chair of the Athletics  
campaign

Laura and Lawrence J.  
Winking '71  
Clara B. McKinney and  
Friends  
Union Bank

### **PACESETTERS** **(\$5,000-\$9,999)**

Joseph A. Bailey †  
Lockheed Commercial  
Aircraft Center, Inc.

### **SPECIAL GIFTS** **(\$2,000-\$4,999)**

Johnnie Ann Ralph  
Jennifer McMullen  
Hal and Margo  
Hoverland '73

### **GENERAL GIFTS** **(\$500-\$1,999)**

Gerald Newcombe '76, '82  
Dr. and Mrs. Eldon C. Lewis  
Otto Chang  
Joan H. Kritzberg

\* "Founders" are those who made  
gifts of \$15,000 and above  
(Donors are listed according to  
the total pledge amount and the  
date of their gift.)

† = deceased

Restricted and unrestricted gifts and pledges of \$500 and above for the period 1/1/92 through 6/30/93 are being recognized because this is the first published list of Partnership 2000 Campaign donors. Cal State is in the early phase of its campaign. These donors collectively have contributed \$3,039,000 toward the \$8 million Campaign goal. Over the next four years, the university looks forward to adding hundreds of additional alumni and friends to this Partnership 2000 Campaign donor listing.



# Legacy Society

*Created to recognize individuals who have made special deferred gift commitments in support of the university, the Legacy Society honors our alumni, employees and friends who, by naming the CSUSB Foundation in a will, trust or insurance arrangement, will provide future enrichment for Cal State's students and programs.*

*We express our heartfelt thanks to the friends who have supported Cal State in this way.*

**Herbert & Anna Jane Andrews \***

*Charitable Remainder Unitrust to benefit programs of the John M. Pfau Library*

**Joseph A. Bailey \* †**

*Bequest to establish the Joseph A. Bailey Student Emergency Loan Fund*

**Lynn W. Coatney \* †**

*Lynn W. Coatney Testamentary Trust to further the educational process for students and faculty in the culinary and nutritional fields.*

**Lawrence Daniels '76, '80**

**Dr. Anthony & Mrs. Lois Evans**

**Darlene L. Johnson '81**

**James N. Kennedy '72, '77**

**Dr. Adria Klein**

**P.A. "Debby" Polen**

**H. Stephen Prouty**

**Floyd Rasmussen '73**

**Anne M. Ronning \***

*Bequest to establish "The Julie D. and Anne M. Ronning Scholarship Fund" for the benefit of students enrolled in the School of Business and Public Administration*

**Dr. Judith & Mr. Glenn Rymer '70**

\* Denotes new members for the 1992-93 fiscal year.

† = deceased



By choosing to name the university as the beneficiary, Legacy Society members ensure that their annual support and legacy will continue in perpetuity. Bequests can be unrestricted as to their use, or restricted for a specific capital or equipment purpose, for an endowment or for program or scholarship support. To learn how you can become a member of the Legacy Society at Cal State, San Bernardino, or for information regarding deferred gift opportunities, please call Stephen Christensen (909) 880-5006. If you have provided for Cal State, San Bernardino in your will or through any other deferred gift vehicle, please let Stephen Christensen know. We would be honored to recognize you for your generosity by including you in our annual listing of Legacy Society members. The CSUSB Foundation was established as the nonprofit 501 (C) (3) tax-exempt organization that receives gifts to benefit California State University, San Bernardino. The Foundation receives outright and deferred gifts.



**1992-93**

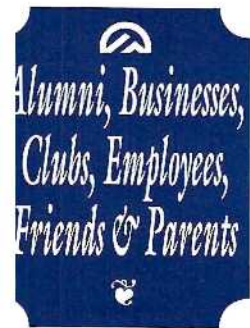
# HONOR ROLL OF DONORS

OUR TRIBUTE TO  
THE MANY  
FRIENDS WHOSE  
GIFTS AND  
VOLUNTEERISM  
SUSTAIN AND  
ENRICH THE  
UNIVERSITY'S  
ACADEMIC,  
CULTURAL AND  
RECREATIONAL  
PROGRAMS.



# 1992-93

## HONOR ROLL OF DONORS



### PRESIDENT'S CIRCLE

**ALUMNI**  
Nicholas J. Coussoulis '75  
Marlene Johnson '81  
John W. Kennedy, Sr. '79  
Glenn Rymer '70  
Lawrence A. Winking '71

**BUSINESSES & ORGANIZATIONS**  
Pheuser Busch Inc.  
Atlantic Richfield Co.  
California Association of Black Correctional Workers  
Grosser Mall Merchants Association  
Orinthians F.C.  
Grown Printers  
Gordon Electric Institute  
Ernest F. Bailey, Inc.  
Good Industries Sales Club of Riverside & San Bernardino Counties  
Ford Motor Credit Corp.  
Friends of Golf, Inc.  
The Gas Company  
TE Telephone Operations West Area  
The Jordan Company  
Lockheed Commercial Aircraft Center

Neal T. Baker Enterprises, Inc.  
NEC Business Communication Systems, Inc.  
Richard Garza Memorial Foundation  
San Bernardino County Central Credit Union  
San Bernardino Valley Municipal Water District  
Southern California Edison Company  
Specialty Minerals, Inc.  
Sumitoma Realty & Development Co.  
University Book Exchange  
Western Association of Food Chains  
Yasuda Institute of Education

### CSUSB CLUBS, DEPARTMENTS & ORGANIZATIONS

Alumni Association of CSUSB

**EMPLOYEES**  
Dr. Billie G. Blair  
Dr. Anthony H. Evans  
Dr. Lee Porter  
Dr. Judith M. Rymer  
David L. Suenram

### FORMER EMPLOYEES

**FRIENDS**  
Joseph A. Bailey †  
Jack H. Brown  
Albert J. Crosson  
Mr. & Mrs. Donald N. Ecker  
Robert S. Frost  
Dr. & Mrs. Taewoong Kim  
Wilfrid Lemann  
Clara B. McKinney & friends

B. Gregory McPhate  
Mrs. Bennet A. Meyers  
Mr. & Mrs. Charles D. Obershaw  
Mr. & Mrs. Bruce D. Varner

### CUM LAUDE SOCIETY

**ALUMNI**  
Danny Bilson '78  
Grant S. Bradshaw '75  
Anne Crum '76  
David DeMauro '87  
Paul J. DeMeo '78  
Cheryl A. Dunagan '85  
Pamela D. Langford '85  
Arlene Leonard '75  
Linda J. Lingo '82  
Gina M. Sand '94  
Beverly Smith '86  
Frank X. Woolard '71

**BUSINESSES AND ORGANIZATIONS**  
American Association of University Women, San Geronio Branch  
Ascom Communications, Inc.  
AYSO Cultural Exchange  
CCE-West  
Deloitte & Touche  
GTE, San Bernardino  
GTE, Riverside  
Grand Terrace Soccer Club  
Hanover & Schnitzer  
Kiwanis Club of San Bernardino  
Los Angeles Cellular Telephone Co.  
Lund & Guttery, C.P.A.'s  
Match Corporation  
Orange Empire Dog Club, Inc.

Rail-Cycle L.P.  
Rotary Club of Palm Desert  
Science Resources  
South Coast Air Quality Management Dist.  
TRW Inc.  
West San Bernardino County Water District

**CSUSB CLUBS, DEPARTMENTS & ORGANIZATIONS**  
California Faculty Association, San Bernardino Chapter  
CSUSB Extended Education  
Hispanic Faculty & Staff Association

**EMPLOYEES**  
David DeMauro '87  
Dr. Juan C. Gonzalez  
James R. Gooch  
Dr. Dennis L. & Mrs. Jan Hefner  
Dr. Julius D. Kaplan  
Dr. Joan H. Kritzberg  
Pamela D. Langford '85  
Pola Patterson  
Dr. Jerrold E. Pritchard  
Beverly Smith '86  
Kenneth J. Thygeson

**FORMER EMPLOYEES**  
Dr. James D. & Anne Crum '76

**FRIENDS**  
Sarah J. Anderson  
Mr. & Mrs. Thomas L. Armstrong  
Mr. & Mrs. Edward Dunagan

**PARENTS**  
Mr. & Mrs. Charles F. Lytle  
Mr. & Mrs. Lyle G. Spalding

### UNIVERSITY ASSOCIATES

**ALUMNI**  
Donald B. Blish '72  
Stewart E. Boden '77  
Syd A. Breckley '87  
Lawrence L. Daniels '76  
John J. Dudding '70  
Kat E. Grossman '83  
Harriet P. Gibson '87  
Dianne L. Huppmann '84  
Theodore Krug '68  
Janice L. Lemmond '78  
Rudolph Liggins '76  
Paul R. Mata '87  
Patricia McKinster '85  
Frieda S. Milowsky '84  
Linda F. Morrisette '91  
M. Carol Parente '85  
Gerald A. Peterson '88  
Floyd Rasmussen '73  
Elizabeth A. Scholz '87  
Cheryl Smith '75  
Harriet J. Spitz '87  
George A. Steidle '85  
Chin Y. Wang '87  
Rebecca Warren-Marlatt '91

### SUPPORT GROUP MEMBERSHIP IS DETERMINED AS FOLLOWS:

**PRESIDENT'S CIRCLE**  
Gifts of \$1,000 or greater

**CUM LAUDE SOCIETY**  
Gifts of \$500 to \$999

**UNIVERSITY ASSOCIATES**  
Gifts of \$250 to \$499

**CENTURY CLUB**  
Gifts of \$100 to \$249

**FRIENDS OF CAL STATE**  
Gifts of \$25 to \$99

† = deceased

Mr. & Mrs. William S. Hellyer  
Dr. & Mrs. Owen O'Connor  
Mr. & Mrs. Charles Strain  
C. L. Trine  
Mrs. Forrest L. West

**BUSINESSES & ORGANIZATIONS**  
Ayres Ezer Lau, Inc.  
Best, Best & Krieger  
Brinker Restaurant Corporation

Cajon High School  
Associated Students  
Body  
CAL PAC Construction,  
Inc.  
Chuck Obershaw Toyota  
City of San Bernardino  
Contel of California  
Eadie and Payne, C.P.A.'s  
Ernst & Young  
F. T. Andrews, Inc.  
Foothill Independent Bank  
Fredericks Benefits  
Gate City Beverage Co.  
Greenwood Bail Bonds  
Hayden, Inc.  
Holiday Oldsmobile-Mazda  
Hospitality Dental Group  
Inland Group, Inc.  
Johnson & Higgins of  
California  
Kiwanis Club of Greater  
San Bernardino  
KPMG Peat Marwick  
McGladrey & Pullen,  
C.P.A.'s  
Pacific First Bank  
Paine Webber  
Reid & Hellyer  
Rick Rogers Drywall, Inc.  
San Bernardino Associated  
Governments  
San Bernardino County  
Administration  
Soren, McAdam, Bartells  
C.P.A. Inc.  
Stater Bros. Markets  
SUNAIR Aluminum  
Corporation  
Swenson Accountancy  
Corporation  
Union Bank  
Vavrinek, Trine, Day and  
Co., C.P.A.'s  
Viking Auto Center, Inc.

#### EMPLOYEES

Joyce Alta  
Dr. Aubrey Bonnett  
Dr. Louis A. & Elsa  
Fernandez  
Dr. Joan E. Fryxell  
Dr. Catherine Gannon  
Harriet Gibson '87  
James L. Hansen  
Randy Harrell  
Dr. Adria Klein  
Theodore Krug '68  
Janice L. Lemmond '78  
Dr. Eldon C. Lewis  
Dr. Fook F. Liu  
Dr. Janice Loutzenhiser  
Dr. Sarojam Mankau  
Dr. Clark P. Molstad  
Dr. Gary A. Negin  
Dr. James C. Pierson  
Cheryl Smith '75  
Dr. Stanley L. Swartz  
William Warehall  
Rebeccah Warren-Marlatt '82  
Dr. Peter A. Wilson

#### FORMER EMPLOYEES

Dr. Arlo D. Harris  
Dr. Alexander Sokoloff

#### FRIENDS

Fern F. Ashworth  
Mr. & Mrs. Florentino  
Garza  
Mr. & Mrs. Allen B.  
Gresham  
Mr. & Mrs. Neal Hanzlik  
Dr. George J. Kallins  
Mr. & Mrs. Jian-Chun Lian  
Mr. & Mrs. James R.  
Mulkey  
Mrs. Ben E. Nordman  
Mr. & Mrs. James V.  
Williams

#### PARENTS

Gary Cichella  
Mr. & Mrs. Henry Z.  
Figueroa  
Mr. & Mrs. Franklin G.  
Maberry  
Mr. & Mrs. Fernando  
Magana  
Mr. & Mrs. Lloyd T.  
Rochford  
Al Taroli  
Mr. & Mrs. Dec E. White

#### CENTURY CLUB

The Founders Club, the university's \$100-\$249 gift club, is known now as the Century Club in order to avoid confusion with the \$15,000 Founders gift level introduced with the Partnership 2000 campaign.

#### ALUMNI

Joy A. Albin '81  
Debra S. Allen '81  
Steve R. Andersen '82  
Maryhelen E. Anderson '85  
Carol L. Anselmi '87  
Virginia T. Arciniega '76  
Thomas A. Atkinson '87  
Manuel J. Barba '91  
Judy A. Barbo-Partain '78  
Virginia L. Berry '72  
Marna V. Boch '87  
Miles L. Bogh '78  
Yvonne C. Branchflower '88  
Mary L. Brown '69  
Carol A. Brunet  
Cid Cardenas '75  
T. Lamar Carithers '78  
Patricia J. Carthen '75  
Lisa R. Cassinelli '91  
Ming-Ching Chen '94  
I-Rong Chern '94  
David L. Chesebro '82  
Shauna Clark '80  
Claudia C. Crandall '74  
Kris Crudup '76  
Ann D. Curtis '86

Ray Dacolas '87  
Mary E. DeMarco '83  
Howard Dexter '81  
Mary A. Dittor '69  
Mary D. Donovan '71  
Lawrence S. Eisenhart '77  
George B. Epps '76  
Dianne J. Ergish '77  
Donna L. Filadelfia '89  
Cheryl A. Flowers '77  
Dianne J. Goddard '87  
Laura A. Gonzales '79  
Gale M. Gosney '82  
Margaret H. Griffith '81  
Patricia L. Grimes '84  
James D. Hamilton '77  
John E. Harder '67  
Anita Harp '76  
Wayne M. Harp '72  
Barbara S. Herrin '90  
Stephen M. Hesse '71  
Charles S. Horinouchi '81  
Shu-an Hsieh '94  
Louise Hulbrock '70  
Emmanuel L. Humphries '80  
Chung-Yen Hung '94  
Jody L. Isenberg '74  
Larry E. Johnson '84  
Patricia M. Kaegi '91  
Dan Keller '79  
Joan S. Keller '86  
James N. Kennedy '77  
Deborah E. Kinder '82  
Joanna E. Koon '87  
Daniel Kopulsky '80  
Margaret A. Koster '84  
Carla H. Krause '75  
Allyn H. Kruse  
Kathy Kushner '93  
Richard A. LaCues '71  
Sushma K. Lal '90  
Angelos A. Lambis '88  
Floyd C. Leach, Jr. '78  
Gloria P. Lendo '84  
Tzu C. Lin '94  
Helga E. Lingren '79  
Harold J. Lyons '79  
Norma Lyons '80  
Anita I. Martinez '90  
Gilbert Martinez '70  
Julie A. Masek '91  
Tanya J. Mauldin '86  
Patrick A. McCombs '71  
Charles McCray, Jr. '84  
Rachel B. McKinney '71  
M. Susan Miller '69  
Ross Miyashiro '84  
Olga Morales '90  
Vicki Morris '83  
Jeanne M. Neil '92  
John Neiuber '77  
Karen G. Nelson '74  
Judith L. Nowlin '89  
John K. Orr '86  
Henry M. Ortiz '84  
Christine J. Richards '90  
Diana Z. Rodriguez '90  
Cleate E. Rose '84  
Michael Rosenfeld '77  
Charlotte E. Searcy '82

Munir A. Sewani '78  
Clare E. Sharafinski '88  
James Sharer '91  
Scott D. Sheldon '81  
Joan Shirley-Fuerte '89  
Frank Slaton '82  
Verla Thomas '81  
Linda S. Todd '86  
Robert E. Tremont '78  
Virginia A. Wagner '69  
Alexander Waldman Jr. '82  
Wen-Hui Wang '94  
Yun Ju Wang '91  
James Warman '82  
Mendy L. Warman '84  
Mitzi W. Wells '71  
Robert D. Wilson '90  
Chung-Huan Wu '94  
Yuli Wu '92  
Shih-Kuang Yen '91  
Victor Zupancich '85

#### BUSINESSES & ORGANIZATIONS

Apple Valley Surgery  
Center  
Arrowhead Ranch  
Bank of America  
Bench's Custom Painting  
Cal Baptist  
Calnev Pipe Line Company  
Fontana Mummies  
Inland Empire West  
Resource Conservation  
District  
Jerseys Pizza  
Kassel & Kassel Law Corp.  
Mr. Hill's Catering  
Company  
National Society for the  
Preservation of Folk,  
Tent & Repertoire  
Orange Grove Trust  
Project Eco-School  
Redlands Federal Bank,  
Loma Linda  
Redlands Festival Ballet Co.  
Renaissance Insurance  
Agency  
RIMS California Arts  
Project  
Sanitation Districts of L.A.  
County  
Seven W. Enterprises Inc.  
Soils Southwest Inc.  
United Outdoor  
Advertising Co.  
Value Custom Homes  
Wells Fargo Bank,  
Highland Branch  
West End Water  
Awareness Committee  
Wolff/Lang/Christopher  
Architects, Inc.  
Woman to Woman OB/  
GYN Medical Group.  
Inc.  
World Firefighters Games,  
Inc.

#### CSUSB CLUBS, DEPARTMENTS & ORGANIZATIONS

California Black Faculty &  
Staff Association  
Pi Lambda Theta, Gamma  
Sigma Chapter

#### EMPLOYEES

Dr. William Aguilar  
Debra S. Allen '81  
Michael C. Arredondo  
Dr. Margaret Atwell  
Dr. Russell Barber  
Dr. Cynthia E. Bird  
Dr. Sheldon E. Bockman  
Dr. Edward J. Bostley  
Margaret Chavez  
Stephen Christensen  
Mary Colacurcio  
Terry Constant  
Dr. Margaret H. Cooney  
Dr. David L. Decker  
Dr. Esteban R. Diaz  
Carol Dunlap  
Judy Dymond  
Dr. Loren Filbeck  
Paul Frazier  
Susan N. Garcia  
Dr. Joseph W. Gray  
Dr. Sue Greenfield  
Edward Harrison  
Dr. Linvol G. Henry  
Dr. Sung-Kyoo Huh  
Dr. Dennis L. Ikenberry  
Dr. Janice K. Jackson  
Dr. Jotindar S. Johar  
Dr. Kenneth Johns  
Dr. Keith Johnson  
Eileen Kachevas  
Dr. N. Laura Kamptner  
Dr. Rauf A. Khan  
Dr. Mary Kornguth  
Samuel S. Kushner  
Dr. Kenneth E. Lane  
Dr. Janice M. Layton  
Helga Lingren '79  
Joseph Liscano  
Karen Logue  
Dr. Ward McAfee  
Cecilia McCarron  
Jack F. McDonnell  
Don McKenzie  
Ross Miyashiro '84  
Olga Morales '90  
Mary Moya  
Dr. T. Patrick Mullen  
Tena Nelson  
Dr. L. Theron Pace  
Dr. Ronald K. Pendleton  
Dr. Thomas J. Pierce  
Cynthia Pringle  
Johnnie Ralph  
Dr. Jean C. Ramage  
Reyes Rios  
Dr. J. C. Robinson  
Diana Z. Rodriguez '90  
Dr. C. E. Tapie Rohm, Jr.  
Olivia Rosas  
Don Saprionetti

Mary R. Schmidt  
James Sharer '91  
Nancy P. Simpson  
Frank Slaton '82  
Carolyn R. Smits  
Dr. David O. Stine  
Dr. Darleen Stoner  
Dr. J. Paul Vicknair  
Antonio Vilches  
Mendy Warman '84  
Dale West  
Dr. L. Curtis Westbrook, Jr.  
Mary Williams

#### FORMER EMPLOYEES

Dr. A. Vivien Bull  
Dr. Amer M. El-Ahraf  
Al Saavedra  
Roma Sill  
Dr. Joseph K. Thomas  
James H. Urata  
Dr. Donald Woods

#### FRIENDS

Mr. & Mrs. Allen H. Andrews  
Mr. & Mrs. J. E. Badgley  
Mr. & Mrs. John Beckley  
Carde Bellamy  
Dr. Earle B. Blakeslee  
Mr. & Mrs. Henry Coates  
Nicole C. Crimmins  
Jim DiCamilli  
Mr. & Mrs. Larry Egan  
Mr. & Mrs. Ronald E. Evans  
Dennis M. Finn  
Mary Francis  
Annette F. Franjie  
Mr. & Mrs. Ron S. Galvan, Sr.  
Mr. & Mrs. Albert T. Gazzar  
Mr. & Mrs. William L. Grube  
Nick Guadagnoli, Sr.  
Dr. W. Benson & Mrs. Pamela Harer, Jr.  
Mark L. Hoy  
Patricia M. Hughes  
J. B. Keith Humphreys  
Mr. & Mrs. David C. Kennedy  
Hon. & Mrs. John W. Kennedy, Jr.  
Harry R. Lambert  
Evelyn P. Magnuson  
Mr. & Mrs. Edward F. Meier  
Mr. & Mrs. Patrick J. Morris  
Mr. & Mrs. Leslie D. Murray  
Deborah A. Olson  
Mr. & Mrs. Kenneth A. Painter  
Mr. & Mrs. Robert L. Peas  
Mr. & Mrs. T. Michael Purcell  
Mr. & Mrs. Ronald B. Rayner

Mr. & Mrs. Philip M. Savage III  
Mr. & Mrs. Robert Sedlak  
Douglas R. Shaw  
Penny J. Shubnell  
Rudolph J. Shubic  
Mr. & Mrs. Mark R. Still  
Dr. Lawrence R. Walker  
Mr. & Mrs. Paul E. Wilson  
Mr. & Mrs. Bob Wing

#### PARENTS

Mr. & Mrs. Fred Anderson  
Dr. & Mrs. David K. Andes  
Mr. & Mrs. Albert M. Andon  
Mr. & Mrs. Ted P. Baca  
Mr. & Mrs. James W. Baker  
Brenda L. Baumgartner  
Mr. & Mrs. Leonard B. Bayaca  
Mr. & Mrs. Dennis L. Bishop  
Petrona Bowman  
Mr. & Mrs. Allen Bogh  
Dr. & Mrs. Benjamin Campomanes  
Mr. & Mrs. Bradley Carson  
Mr. & Mrs. Alex Chronopoulos  
Mr. & Mrs. Dennis Clement  
Mr. & Mrs. Colin R. Cooper  
Mr. & Mrs. Donald L. Day, Jr.  
Mr. & Mrs. Arthur Doktorczyk  
Mr. & Mrs. Thomas J. Dumont, Jr.  
Eleanor Evangelista  
Mr. & Mrs. Robert J. Foley  
Mr. & Mrs. David W. Fosgett  
Mr. & Mrs. Clyde B. Foytik  
Arllys Franklin  
Mr. & Mrs. Londell Graves  
Mr. & Mrs. Anthony W. Hammack  
Mr. & Mrs. Donald R. Hellon  
Dr. Linvol G. Henry  
Esperanza S. Hernandez  
Joanne M. Hitt  
Mr. & Mrs. Frank Holguin  
Mr. & Mrs. Sisto J. Holguin  
Mr. & Mrs. Emmanuel Humphries  
Mr. & Mrs. Kemal A. Hussein  
Mary B. Jimenez Gonzalez  
Mr. & Mrs. Harold E. Johnson  
Mr. & Mrs. Melvin D. Jones  
Mr. & Mrs. Jerry Kendall  
Mr. & Mrs. Ralph Kermoian  
Mr. & Mrs. Michael T. Kettle

Mr. & Mrs. Kenneth J. Kozlowski  
Mr. & Mrs. Jim Langlois  
Mr. & Mrs. Steve LeMere  
Mr. & Mrs. Theodore Linton  
Mr. & Mrs. Cheng-Yi Lo  
Mr. & Mrs. Joseph R. Lopez  
Nancy P. Lopez  
Mr. & Mrs. David A. Lowry  
Charles M. Maneri  
Mr. & Mrs. Jose R. Martin  
Mr. & Mrs. Donald Mladenoff  
Mr. & Mrs. Garry L. Muehlich  
Mary Newman  
Dr. & Mrs. Angelo Ong-Veloso  
Charles T. Orr, Jr.  
Mr. & Mrs. Alfred Ortiz  
Mr. & Mrs. Leo A. Paige  
Mr. & Mrs. Kenneth H. Parker  
Mr. & Mrs. Edward Pradd, Sr.  
Mr. & Mrs. Santoso Pukarta  
Mr. & Mrs. Edwin E. Raffel  
Mr. & Mrs. John C. Reisinger  
Denise Risdon  
Dr. & Mrs. Conrad Salinas  
Mr. & Mrs. Frederick J. Sanborn, Jr.  
Mr. & Mrs. William E. Savage  
David Shaposhnick  
Mr. & Mrs. Louis H. Shaup  
Mr. & Mrs. Sam C. Sill  
Mr. & Mrs. Lewis Slater  
Mr. & Mrs. John Sogi  
Mr. & Mrs. Gabriel G. Solorio  
Mr. & Mrs. Jet Somsuvanskul  
Mr. & Mrs. Charles R. Sparks, Jr.  
Mr. & Mrs. Michael Stanbrough  
Mr. & Mrs. Peter Stein  
Mr. & Mrs. Roy T. Teramoto  
Mr. & Mrs. Alan R. Tibbetts  
John Tobin  
Mr. & Mrs. Richard G. Tvedt  
Mr. & Mrs. Robert A. Tvrdovich  
Ruth Van Luven  
Mr. & Mrs. Winston D. Villocino  
Dr. Mary Ann Wagner  
Mr. & Mrs. Don Walke  
Mr. & Mrs. Robert E. Watkins  
Mr. & Mrs. Larry J. Wise  
Mr. & Mrs. Chester Wray, Jr.

#### FRIENDS OF CAL STATE

##### ALUMNI

Shelley Abrams '88  
Steven C. Abrams '83  
Mark G. Adelson '79  
Rhapsody L. Agamao '91  
Teresa E. Aguilera '87  
Jennifer Aguirre '90  
Gary R. Akard '72  
Harvey C. Albert '91  
Mary L. Alexander '75  
David A. Alvarez '83  
Doris L. Alvarez '82  
Scott R. Anderson '88  
William C. Anderson '91  
Ann E. Andrews '92  
Stephen M. Anker '89  
Joseph T. Artino '72  
Rosario Atayde '82  
Roberta L. Babbage '86  
Sherri L. Bacon '83  
Mario E. Baeza '88  
Donna L. Baker '91  
Carla G. Bal '70  
Wendy L. Ball '86  
Donald S. Bandy '77  
Judith A. Barkman '91  
Dorothy Barnell '71  
Lynne H. Barnett '86  
Nancy A. Barnicoat '91  
Stacie S. Bates '92  
Marjorie M. Bauer '88  
Myung Hee Bauer '83  
Steven M. Bauer '71  
Donna R. Baylor '90  
Roy E. Bean, Jr. '81  
Diana F. Becerra '82  
Salvatore J. Bellia '75  
Linda Bennecke '69  
Richard J. Bennecke '67  
Edward Bennett '88  
Mary A. Bennett '90  
Charles J. Berck '90  
Gail E. Berg '76  
Judith M. Berlin '88  
Rodney A. Bernat '79  
Tamara L. Bert '90  
Joann L. Bevan '84  
Richard Bevan '78  
Rosemary T. Binney '69  
Cynthia M. Biskner '90  
Charlotte Black '82  
Paul B. Blackwelder '79  
Rosemary C. Blank '76  
Michael A. Blind '74  
John W. Bobo '75  
Barbara J. Bonadiman '87  
Kathleen A. Bonine '90  
Cheryl A. Bordelon '82  
Rothvin W. Bosley '77  
Robert L. Bottoms '90  
Michael J. Boyd '76  
Gary E. Boyles '91  
Hubert W. Bradshaw '94  
Denise Brakora '85  
Patricia A. Braymer '88  
Polly Breitkreuz '90  
Thomas F. Breitkreuz '86

Anne M. Brickert '83  
James S. Brigham '75  
David L. Bristow '82  
James E. Brown '89  
Mitzie A. Brown '91  
David G. Buchanan '78  
Larry Buck '83  
Vicki A. Buckley '89  
Judith A. Bullard '83  
Debra L. Burr '82  
Darren D. Bush '91  
Mary A. Bush '88  
Joanne R. Butki '81  
James F. Canter '81  
Debra S. Carlisle '87  
Robert Carlisle '87  
Rick E. Carner '90  
Cecilia Carrasco '79  
Daniel Carrasco '68  
Wilmer D. Carter '72  
Norma T. Castillo '85  
Roberto Castillo '84  
Bernard G. Castro '88  
Vitus A. Cataldo '79  
Tina M. Catalfamo '90  
Renato Cervantes '78  
Eloy G. Chairez '88  
Yvonne A. Chamois '90  
Margaret A. Chase '85  
Ryan M. Cherland '87  
Mary L. Christelman '69  
William Christelman '69  
Evan Christopherson '74  
A. Ann Clandening '90  
Mary E. Clanin '89  
Jeanette C. Clark '90  
Marsha H. Claybrook '77  
James B. Cloud '90  
Irene S. Cochran '92  
Scott W. Cochran '92  
Benjamin L. Cochrane '74  
Wilma L. Cochrane '74  
Rita L. Cohn '81  
Carol L. Cole '73  
De'Neen M. Coleman '90  
Brenda E. Collins '79  
John A. Comet '90  
Robert F. Condon, Jr. '76  
Jacques R. Cooper '82  
Ronald J. Cooper '84  
Gerald A. Corsi '87  
Gary Cosand '70  
Marco Cota '79  
Olivia Cota '83  
Armando Covarrubiaz '92  
Kathlyn S. Cox '85  
Kevin A. Crain '92  
Morris V. Crosby '77  
Connie Crouch '84  
Louise Crowley-Sullivan '90  
Joe M. Cruz '83  
Donna G. Danielson '79  
Elizabeth M. Dansie '90  
Westley Dansie '89  
Judith A. Davis '82  
Chice A. Davison '79  
Terry L. Day '87  
AnnMarie Deasy '94  
Gary P. Dehrer '76  
Carol L. De Lapp '75

Ronald F. Demarkles '88  
Gloria G. De Ment '67  
Betty P. Dennison '83  
Kathleen J. Devine '82  
Celeste De Zan, Jr. '79  
Sandra L. Diaz '82  
Laura J. Dierking '89  
Sibyl J. Disch '80  
Melvin M. Dittmore '84  
Margaret P. Donahue '85  
Robert L. Donnell '78  
Wilma L. Dougharty '75  
Dennis L. Draeger '74  
Denver C. Drieberg '82  
Louis Dudash IV '89  
Bonita A. Dutchover '82  
Kyle R. Eaton '87  
May M. Economy '79  
James P. Edgmon '86  
Eileen T. Egland '87  
Harriet P. Engelbrecht '86  
Marilyn O. Erickson '84  
Henry Espinoza '77  
Lorena M. Evans '78  
Nancy L. Evans '83  
Bill Every '77  
Kathryn L. Evinger '89  
Russ Eyre '86  
Barbara J. Fanning '90  
Alan L. Farias '88  
David L. Feinberg '68  
Sclena V. Fenison '83  
William G. Ferguson '83  
Robert Ferrone '82  
Mark Fife '80  
Maureen S. Fife '78  
Mark J. Fitzgerald '73  
Sharon Flores '78  
Kathleen Flynn '82  
Alva L. Franklin '87  
David A. Furst '82  
Philip C. Galvez '77  
John A. Garcia '92  
Linda H. Gassett '80  
Deborah Gelsomino '79  
Gabriel Gil '83  
Phyllis M. Gilmore '84  
John H. Gilner '90  
Bob E. Glasser '89  
Alice J. Glazier '80  
Edwina N. Golightly '88  
Joseph Gonzalez '79  
Michael Gordon '87  
Richard E. Graeber '91  
Robert L. Graham '91  
Karin A. Grance '85  
Kenneth C. Gregory '91  
Nancy S. Grimme '86  
Lyn L. Gruber '92  
David B. Gue '90  
Harold H. Gue '89  
Kathryn R. Guerin '78  
Thomas J. Gueston, Jr. '88  
Kenneth P. Guillaume '78  
Lynda L. Hadley '85  
Evelyn J. Haggard '84  
Craig M. Halder '90  
Julie A. Hall '88  
Martha L. Hall '76  
Gerald S. Hamilton '91

Kenneth C. Hancock '77  
Joene A. Handen '74  
Farolyn W. Hanscom '81  
Drew F. Harding '86  
Barbara E. Hardy '77  
Elinor M. Harmer '67  
Michael E. Harney '92  
Deborah L. Harris '91  
Elizabeth M. Hass '90  
Valeria E. Hatch '88  
Susan S. Haugh '78  
Audrey A. Hayes '90  
Jane K. Haynes '72  
Steve K. Hazeyama '90  
Gregory Hazzard, Sr. '91  
Elizabeth M. Heaston '92  
Glen Heavilin '84  
Marilyn Heavilin '80  
Enez Heidenreich '74  
Richard E. Heitman '79  
Wendy A. Helberg '92  
David J. Hellman '86  
Howard H. Hendricks '77  
Darrell L. Hensel '89  
Carmen Hernandez '76  
Judith A. Hernandez '89  
Linda J. Hernandez '91  
Linda M. Hernandez '85  
Manuel H. Hernandez '81  
Nora C. Hernandez '87  
Rebecca Hernandez-Powell '89  
Barbara C. Herzberg '85  
Linda Heyes '83  
Dorothy M. Hibbard '80  
Karen Higgins-Wakamiya '80  
Rebecca Hiroto '81  
Debra L. Hitter '90  
Robert E. Hockman '86  
Virginia L. Hodgson '90  
Tom Hollihan '88  
Deborah K. Holling '86  
Mark R. Holmes '78  
Davis H. Hopper '80  
Debra Hopper '80  
Marlene H. House '75  
Marjorie A. Hoverland '73  
James Howell '74  
Nancy J. Hrachiar '81  
Janet H. Hubbard '88  
Bonita D. Hubers '79  
Aurora J. Huesca '85  
Harold K. Hunt '83  
Nancy S. Hunt '87  
Mark D. Hutchason '87  
Robert D. Hyde '69  
Cathy A. Ibbs '90  
Janice L. Irvin '81  
Marianne M. Jagers '92  
Elizabeth M. Jenks '88  
Andrew J. Jensen '84  
Gilbert L. Jimenez '82  
Cleveland Johnson, Jr. '83  
Donna J. Johnson '87  
Elizabeth Johnson '85  
Elois P. Johnson '87  
Frieda N. Johnson '88  
Marguerite H. Johnson '70  
Pamela L. Johnson '91  
Paul H. Johnson '71

Brian L. Jonasse '74  
Donna M. Jones '90  
Suzanne E. Jones '91  
Thomas W. Judge '76  
Gary D. Kabot '81  
Leila A. Kachevas '83  
Steve Kanouse '87  
Richard E. Kaplan '92  
John P. Kaptain, Jr. '80  
David M. Kason, Sr. '79  
Sharon L. Kaste '86  
Charles L. Kasten '83  
Debbie L. Kaufman '91  
Susan C. Kaufman '90  
John R. Kazalunas '84  
Yvonna M. Kean '90  
Wesley L. Keat, Jr. '91  
Victor P. Keaton '77  
Mildred C. Kelley '73  
Gary H. Kelly '87  
Kathleen J. Kent '82  
Carole Keough '87  
Pamela S. Kettering '90  
Carlyn Kidwell Voyles '76  
James D. Kieffer '75  
Jon W. Kindschy '77  
Peggy Kindschy '80  
Philip King '82  
Phyllis M. King '68  
Lee G. Kinney '85  
Julie Acton Kirsch '85  
James R. Kissinger '76  
Jacqueline M. Klot '91  
Renee T. Knarreborg '80  
Marylin J. Knuckey '87  
Susan E. Knuth '92  
Jonna H. Kollar '73  
Janice A. Kollitz '87  
Debra J. Krogman '88  
Andrew P. Kruk '88  
Sari F. Kustner '81  
Georgina Kwong '94  
Michael D. Lackie '89  
Wendell E. Lake '88  
Darlyne Lamb-Chaplin '89  
Kathryn K. Lancaster '72  
Raymond F. Lancy '82  
Jean M. Landry '88  
Todd Landry '88  
Delmus J. Larkin '90  
Harry H. Larsen '84  
Susan H. Larson '86  
Phillip J. Laure '78  
Julie A. Leak '89  
Jane K. Lebarge '92  
L. Harlan Lee '85  
Sandra E. Leenerts '92  
Richard M. Leeson '71  
Kenneth D. Lemmon '74  
Larry R. Lenkeit '87  
Marcia L. Lentz '80  
Richard A. Leon '91  
Julie D. Lewis '88  
Mary L. Lindgren '85  
Wing Cheung Liu '89  
Yvonne R. Lockwood '90  
Marcia L. Logiudice '85  
Remedios A. Lontok '92  
Beth E. Lopez '88  
Hector R. Lopez '77

Raphel Lopez '72  
Teashia M. Lopez '85  
Joseph A. Losi '86  
Lynn L. Lowe '91  
Clarice H. Lubel '84  
Manuel Lucero '87  
Anthony A. Luck '87  
Betty J. Ludwick '83  
Mary H. Lukkarila '90  
Gilbert Lukkonen, Jr. '78  
Jacquelyn A. Lura '77  
Judith E. Lux '83  
Nhu T. Ly '91  
Carolyn A. Mabey '92  
Sharon L. MacGillivray '82  
Marilyn C. MacKendrick '87  
Geraldine F. Madden '77  
Brenda J. Maddox-Dolan '82  
Gloria T. Makhholm '90  
Helen E. Mansfield '87  
Edith E. Marciel '83  
Nathaniel Marciel '79  
Raymond Marisnick, Jr. '91  
Philomena M. Mark '80  
Gerald A. Marlatt '80  
Laurie K. Marscher '88  
Heloise Marsh '75  
Shirley S. Marshall '68  
Paul G. Martinez, Sr. '79  
Amelia J. Mathews '87  
Judy K. Matthews '79  
G. Alan McAllister '81  
Joann S. McAnlis '90  
Kathleen S. McBride '90  
Sandra C. McCarthy '85  
Douglas J. McElhanev '77  
Lori B. McFaddin '80  
Rosa E. McGrath '77  
Mildred L. McKim '79  
Michael E. Meehl '74  
Sheryl J. Mentz '89  
Helen C. Mercier '84  
Lynn K. Merkwon '87  
Marjorie L. Merritt '69  
Stephen E. Miller '78  
Wayne I. Miller '92  
Charlotte R. Mitchell '75  
Kelly E. Moedl '90  
Lorraine T. Moore '85  
Sharon R. Moore '89  
Larry J. Moreau '74  
Patricia A. Moreno '86  
Donna J. Morin '84  
Janet R. Morrissey '83  
Cecile A. Mosbarger '87  
Paula D. Moscrop '86  
Elizabeth Mounsey '89  
Daniel C. Moye '75  
Gerald K. Muehlbacher '88  
Alan Mueller '85  
Kristi J. Mueller '85  
Helen M. Mues '68  
Barbara J. Muir '87  
Albert J. Munoz '90  
Vivian C. Murphy '88  
Laura M. Nelson '90  
Nancie A. Nelson '77  
Stanley J. Neves '80  
Keith A. Newlin '84  
Maureen Newlin '75

Cheryl A. Nichols '83  
Cecilia Niemantsverdriet '87  
Eileen M. O'Brien '91  
Pamela K. Ogonowski '88  
Julie M. Olsen '92  
David A. Ornelas '81  
Masahiro Otani '88  
Catherine Weiden Otto '82  
Cecilia Palomino-Lopez '80  
Ismael S. Paredes '70  
Brian A. Park '85  
Nancy M. Paschal '82  
Martin Pastucha '90  
David A. Pavao '88  
Russell D. Paxton '69  
Lura Paxton '73  
Douglas M. Payne '72  
Maurice M. Payne '78  
Joseph A. Peccorallo, Jr. '83  
Cheryl L. Peil '85  
Patti S. Penski '69  
Charles A. Perez '84  
Omar J. Pertel '77  
Linda D. Peters '91  
Nancy R. Pettus '77  
Jill M. Phillips '91  
Sufian Phoa '90  
Marcia A. Pifer '85  
Russell T. Pilkington '82  
Lupita R. Pisalyaput '84  
Diane D. Pleasant '76  
Ruth W. Plotkin '86  
Diane Poarch '80  
Connie M. Polino '83  
Mattie S. Popineau '87  
Jill F. Posadas '86  
Vicki G. Powell '78  
Natalie Powell-King '86  
Judith Powers '82  
Joan M. Prehoda '86  
James A. Prendergast '71  
Carolyn L. Preston '79  
Asia C. Price '85  
Linda J. Price '71  
Robert D. Price '80  
Janet A. Profit '92  
Lloyd Pruitt, Jr. '85  
Gail J. Puckett '77  
Stella M. Quinbar '84  
Beverly J. Quinn '89  
Elizabeth M. Quinn '89  
Socorro G. Quintero '73  
Diane B. Raley '89  
Samuel R. Rangel '88  
Susan M. Reed '88  
Adrienne M. Reeves '78  
Ronald J. Rego '81  
Thomas J. Reid '84  
Patricia A. Revelles '87  
Diana Reyes '73  
Elsa J. Rice '84  
Sally Richter '80  
Rachel E. Riddle '78  
Sally Rivera '73  
Sandra K. Robbins '77  
James H. Robertson '71  
Letia Robertson '91  
Lynn A. Robinson '84  
Eliseo Rodriguez '81  
Anita L. Rodriguez '78

Edward E. Rose, Jr. '88  
Margaret K. Rose '89  
Myra P. Rosenzweig-Ttee '88  
Robert P. Rowan '87  
Jerry G. Rucker '75  
Mary L. Ruxlow '86  
Linda A. Sage '79  
George B. Salazar '77  
Mohammed Salch '80  
Frances A. Samples '86  
Carlos R. Scalisi '90  
Teruko Schakel '82  
Kathleen P. Schiller '88  
Kimberly A. Schlotzhauer '92  
Richard M. Schmidt '81  
Corinne A. Schnur '80  
Sandra K. Schouten '90  
Andrew R. Schupp '86  
Karen J. Scott '90  
Samuel C. Scott '77  
Mary C. Seager '90  
Ann Sena '86  
John M. Serio '91  
Pierrette M. Serna '86  
Donna L. Sertic '84  
Charles Shane '72  
James W. Sharer '91  
Thomas Sherrier, Sr. '78  
Helen I. Shippee '87  
Robert M. Showalter '76  
Terry A. Sigdested '79  
Ronald Silva '89  
Manuela S. Silvestre '90  
Dorothy K. Simcoe '88  
Barbara J. Simmons '82  
Mitchell K. Slagerman '84  
Mary K. Slamer '90  
Dona M. Sleeper '71  
Brian D. Slotta '86  
Cheryl K. Smiley '73  
Barbara A. Smith '87  
Jennifer A. Smith '87  
Jerilynn Smith '80  
Karen L. Smith '85  
Katherine L. Smith '86  
Mary L. Smith '77  
Nelda M. Smith '85  
Margaret Soffa '68  
Diane M. Solorzano '89  
Athene G. Sparks '84  
Meredith F. Sparks '91  
Sammy L. Spears '76  
John E. Stark '89  
Brian Starkey '87  
Marie L. Starkey '88  
Anne E. Starkweather '89  
Kathleen J. Stasell '77  
Danny L. Steele '71  
Priscilla Steelman '74  
Esther L. Steers '89  
Ernest C. Stephens '82  
Scott D. Stephens '90  
Mary J. Sterba '89  
Joanne Stevens-Hanson '92  
Pamela J. Stewart '90  
Ellise M. Stiggers '79  
George L. Stimson, Jr. '88  
Deborah R. Stoffel '77

James J. Stoffel '75  
Deborah Stratton '91  
Denise Stringham '83  
Patricia B. Strohecker '74  
Carol L. Sturm '90  
Gary Sullivan '88  
Karen B. Sullivan '77  
Leslie L. Summers '78  
Robert D. Summers '89  
Mao Jen Sun '92  
Carl R. Sundin '67  
Cathy Sutfin '90  
Albert E. Swank III '77  
Louis M. Syllain '89  
Miryana Szabo '94  
Nancy E. Tank '90  
William Tank '90  
Janice A. Taylor '91  
Janis G. Taylor '92  
Richard A. Teaman '83  
JoAnn Tetlock '89  
Michael J. Thomas '82  
Stephen R. Thomas '76  
Danny W. Thomazin '76  
Pamela C. Thompson '74  
Susan A. Thompson '90  
Jeraleen Thornton-Peterson '90  
Max E. Tidler '77  
Greg A. Timpany '85  
Joan F. Tingle '78  
Kimberly J. Tingle '86  
Melinda J. Toler '78  
James A. Traill '91  
Tieng M. Tran '88  
Susan Trexler-Kiskis '91  
Alice J. Tryon '84  
Norman B. Tucker '74  
Kennadine M. Turner '84  
Irene G. Tuttle '74  
Timothy G. Tyler '88  
Carol S. Uffer '87  
Karen K. Underhill '92  
Florence Valencia '81  
Claudia J. Vallentine '85  
Joseph Van Driesen, Jr. '89  
Marilyn Van Norman '72  
Victoria R. Vaughan '89  
Sheila R. Velez '71  
Bette M. Vest '91  
Kevin J. Vidal '80  
Katie R. Viehmann '90  
Rosa C. Villagomez '83  
Mary Violasse-Hastings '76  
Daryl E. Vorce '85  
Heidi J. Waechter '86  
Ann J. Wages '88  
Donna J. Walker '92  
James B. Watson '82  
Richard S. Watts '81  
Susan M. Weber '79  
Judith Weeks '79  
Lisa S. Weidenkopf '91  
Betty J. Weischadle '79  
Peter T. Welby '90  
Robert A. Wengen '90  
Karen J. Weylandt '84  
Norma N. Whitbread '84  
Jerry C. White '90  
June M. White '82

Bobby C. Whiteley '77  
Ronald G. Whyte '83  
Juanita Wielenga '91  
Toni L. Wild '81  
Joan M. Wiley '75  
Jean S. Williams '90  
Kerwin A. Williams '87  
Ryan R. Williams '91  
Nina M. Williamson '78  
Susan B. Willis '85  
Michele R. Wills '91  
Karen C. Wilmot '84  
Elizabeth A. Wingett '88  
Sharon W. Wolff '78  
John P. Wood '83  
Zita M. Worley '79  
Markne R. Wright '88  
Robert A. Wright '86  
Joanne M. Wyman '83  
Chris Wyrick '85  
Lynne Youngstrom '84  
Haur-Fu Yu '90  
Abraham S. Zakar '81  
Marilyn J. Zappala '90  
Kenneth W. Zink '74

#### **BUSINESSES & ORGANIZATIONS**

Alvord Unified School District  
American Anthropological Association  
Assistance League  
Associated Students of Barstow College  
Blackwells Always Nature  
Chapel Christian School  
Citizens for Tree Care  
City of San Bernardino Water District  
Crafton Hills Open Space Conservancy  
Environmental Specialty Products Inc.  
Fullerton, Lemann, Schaefer & Dominick  
Golden Valley Medical & Oxygen Service  
Head Quarters Hair Design  
Inland Masonry  
Institute for Research & Technical Assistance  
Joshua Tree National Monument  
Lighting Technology Services Inc.  
Lucy's Mexican Restaurant  
City of Riverside Public Utilities Dept.  
S. Roy Kato Associates  
San Bernardino County Museum  
San Bernardino County Solid Waste Management  
Selmate U.S.A. Company LTD.  
Silverwood Lake State Recreation Area  
Southern Air

Spiritual Unity Movement Church  
Taco Joe's Restaurant No. 2  
University of Redlands  
USDA Forest Service  
Vegetarian Society, Inc.  
Wednesday Evening Bridge Club  
Western Bright Appliances

**CSUSB CLUBS, DEPARTMENTS & ORGANIZATIONS**  
Sigma Chi Fraternity  
Student Union of CSUSB

**EMPLOYEES**  
Mario E. Baeza '88  
Buckley B. Barrett  
Luvina Beckley  
Dr. Michael L. Boorum  
Marjorie Callaghan  
Dr. John S. Chaney  
Dr. David V. Chavez  
Rita L. Cohn '81  
Maise T. Conceicao  
Dr. John Craig  
AnnMarie Deasy '94  
R. S. Delgado  
Suzanne Espinoza  
George Gibbs  
Patricia Rodgers Gordon  
Irene C. Guillen  
Dr. Diane F. Halpern  
Dr. Craig E. Henderson  
Dr. Jose S. Hernandez  
Dr. Sherry M. Howie  
Beverly S. Johnston  
Dr. L. Lynn Judd  
Dr. Martha P. Kazlo  
Dr. Brij B. Khare  
Peggy Kindschy '80  
Dr. Kazim Konyar  
Dr. Ellen Kronowitz  
Lesley & Harry Larsen '84  
Roger & Katherine P. Lintault  
Cynthia A. Linton  
Dr. Larry E. McFatter  
Dr. James M. Mehegan  
Dr. Randi L. Miller  
Dr. Arthur A. & Mrs. Jan Moorefield  
Raymond A. Navarro, Jr.  
Maureen Newlin '75  
Dr. Ernesto M. Reza  
Dr. James G. Rogers  
Dr. Robert A. Senour  
Pierrette Serna '86  
Marsha Shanteler  
Dr. David Shichor  
Dr. Mary F. Smith  
Sue Strain  
Dr. P. Richard Switzer  
Dr. Dolores W. Tanno  
Dr. Lynda W. Warren  
Dr. Daniel S. Whitaker  
Dr. Jenny Zorn

**FORMER EMPLOYEES**  
Marco A. Cota '79  
Karla Hallum  
Dr. Ernest F. Garcia  
Dr. John M. Pfau  
Dr. James R. Savage  
Dr. Richard Saylor  
James J. Scanlon '89  
Doyle J. Stansel  
Dr. Gordon E. Stanton  
Dr. Helena Stanton

**FRIENDS**  
Mr. & Mrs. Nick D. Abang  
Mr. & Mrs. Joseph Ainsworth  
Mr. & Mrs. Stephen O. Allen  
Mr. & Mrs. Shane Allor  
Dr. Walter Anderson  
Mr. & Mrs. Stephen P. Batcha  
Lois B. Battersby  
Lynda C. Beckley  
Don E. Bellairs  
Mr. & Mrs. Ezekial H. Berlin  
Rosalie Besses  
Mr. & Mrs. Art Bias  
Mr. & Mrs. Marion Black, Jr.  
Dr. James E. Blanchette  
Suzanne Blee  
Mr. & Mrs. Caywood Borror  
Mr. & Mrs. William J. Brunick  
Mr. & Mrs. Robert D. Cahow  
Mr. & Mrs. Anthony F. Calma  
Marlou D. Casebier  
Meridee Casey  
Dr. Nathan Coffin  
Samuel W. Cox  
Mr. & Mrs. William E. Cozzo  
Mr. & Mrs. Alan H. Dale  
Maj. & Mrs. Douglas J. Davis  
Mr. & Mrs. Richard Delmonico  
Diane Dickinson  
Farriel Dobard  
Michael J. Dudek  
David S. Espinosa  
Mary L. Faust  
Dr. & Mrs. Luis L. Francisco  
Mr. Glenn & Mrs. Diane Shaw Franklin  
Mr. & Mrs. Larry Franklin  
Mr. & Mrs. Warren Fuller  
Dr. Patrick D. Garcia  
Mr. & Mrs. Rudy Garcia  
Mr. & Mrs. Rolf Garthoffner  
Mr. & Mrs. Raymond Georgevits

Brian Gillespie  
Mr. & Mrs. Perry Glover  
Dr. & Mrs. Paul G. Godfrey  
Mr. & Mrs. Graciano Gomez  
Frank L. Gray  
Bart Groninger  
Kenneth R. Grote  
Mr. & Mrs. Frank R. Haggard, Jr.  
Mr. & Mrs. Hollis G. Hartley  
Mr. & Mrs. Charles M. Healy  
Mr. & Mrs. Joseph Hichman  
Mr. & Mrs. Charles Hickey, Sr.  
Alan Hodes  
Mr. & Mrs. Chris J. Hoekstra  
Marian W. Horine  
Mr. & Mrs. Donald T. Irving  
Mr. & Mrs. Ed Jacobsen  
Mr. & Mrs. Stanley L. Jandt  
Harold Jasmon  
Harriet I. Jason  
Mr. & Mrs. Mark A. Keehn  
Mr. & Mrs. Charles F. Kellers  
Mr. & Mrs. Paul A. Koch  
Mr. & Mrs. Louis Lash  
Mr. & Mrs. William E. Leonard  
Dr. & Mrs. Franklin S. Lewis  
Ms. Cynthia Ludvigsen & Mr. Gary Silvius  
Mr. & Mrs. Mike Main  
Mr. & Mrs. Frederick Mandabach  
Mr. & Mrs. Michael Mapstead  
Mary McCombs  
Mr. & Mrs. Joseph E. McCoy  
Mary C. McCully  
Hon. James C. McGuire  
Mary V. McKenzie  
Mr. & Mrs. Bill Montello  
Jim Morris  
Mr. & Mrs. William Morris, Jr.  
Mr. & Mrs. Forrest Ockels  
Nancy O'Connor  
Mr. & Mrs. Jerry Olsen  
Dr. Gary W. Osborne & Sheila Cox  
Donna R. Patterson  
Mr. & Mrs. David A. Peterson  
Lillian Reagan  
Dr. & Mrs. Dan Rinne  
Mr. & Mrs. Ralph A. Rivers, Sr.  
Mr. & Mrs. Andrew G. Robertson

Ted Robertson  
Mr. & Mrs. W. B. Robinson  
Frances A. Ruark  
Robert H. Sand  
Mr. & Mrs. Danny Sandoval  
Douglas R. Shaw  
Bob Smith  
Mr. & Mrs. Ronald G. Starkman  
Trudi Sturgeon  
Helen S. Swim  
Shiao-Wen Tai  
Mr. & Mrs. Clarence Taylor  
Sharon Tirabasso  
Mr. & Mrs. Arnold O. Vignoni  
Mr. & Mrs. Mark K. Vincent  
Mr. & Mrs. Loyal A. Weiler  
Christopher Weleff  
Mr. & Mrs. Larry J. Williams  
Mr. & Mrs. Alan Young

#### PARENTS

Mr. & Mrs. Alfred Acosta  
Ramon H. Acosta  
Mr. & Mrs. Roderick P. Adams  
Mr. & Mrs. William Addington  
Mr. & Mrs. Jeff Adkins  
Ernest S. Aguilera  
Mr. & Mrs. Robert Ahrendt  
Mary J. Albertson  
Maria C. Alvarez  
Mr. & Mrs. Eladio Amores  
Mr. & Mrs. Bernardino Arreola  
Mr. & Mrs. Jose A. Avalos  
Mr. & Mrs. Joseph Balakoski  
Mr. & Mrs. Luis Barba  
Elinora Baxter  
Ruth N. Beloz  
Mr. & Mrs. Eric V. Berger  
Mr. & Mrs. M.G. Biggers  
Mr. & Mrs. John Billings  
Mr. & Mrs. Barry Booth  
Mr. & Mrs. Thurman Boyd  
Mr. & Mrs. Danny Brisco  
Charlene Brown  
Donna R. Brown  
Mr. & Mrs. Clark Bruce  
Mr. & Mrs. Robert E. Bryant  
Mr. & Mrs. Raymond Bucklew  
Mr. & Mrs. Tawan Bunlong  
Mr. & Mrs. John T. Burrows  
Mr. & Mrs. Don R. Burt  
Karen A. Cain  
Josefina Cancino

Emilio S. Caraveo  
Mr. & Mrs. Juan M. Cardenas  
Mr. & Mrs. Robert M. Carrillo  
Lorraine M. Casey  
Esperanza Castro  
Josephine Ceja  
Mr. & Mrs. Robert J. Chaparro  
Mr. & Mrs. Ernest A. Christian  
Mr. & Mrs. Ken Clark  
Darlene Claypoole  
Mr. & Mrs. Larry Coffin  
Mr. & Mrs. Dennis G. Cole  
Bridget Colern  
Mr. & Mrs. Roland P. Collins  
Mary Contreras  
Mr. & Mrs. Ledford M. Cooke  
Mr. & Mrs. Patrick B. Cooney  
Mr. & Mrs. Charles E. Cox  
Dr. & Mrs. Donald L. Cram  
Mr. & Mrs. Gerald Steven Cumins  
Mr. & Mrs. Joe Cummins  
Dr. & Mrs. Romulo De Leon  
Mr. & Mrs. Ishwar Desai  
Noel A. De Trinidad  
Mr. & Mrs. Pritpal K. Dhaliwal  
Mr. & Mrs. Kenneth C. Dodd  
Dr. William K. Dorrance  
Mr. & Mrs. James M. Dorsey  
Mr. & Mrs. Harold Durian  
Mr. & Mrs. Wilfredo L. Duyongco  
Mr. & Mrs. Paul L. Edwards  
Mr. & Mrs. Earl Eide  
Penelope C. Ellien  
Mr. & Mrs. Alvin Emerson  
Vicky Espinosa  
Mr. & Mrs. Salvador Estanislao  
Mr. & Mrs. William L. Evans  
Mr. & Mrs. Dennis Fachler  
Mr. & Mrs. John Fenn  
Mr. & Mrs. Bob Ferrier  
Mr. & Mrs. Wayne H. Fink  
Linda L. Finkenbinder  
Mr. & Mrs. Jose N. Flores  
Mr. & Mrs. Reagan M. Foley  
Mr. & Mrs. Frank J. Franov  
Mr. & Mrs. Larry Fuller  
Mr. & Mrs. Phillip R. Fusco  
Mr. & Mrs. Carlos Garberoglio  
Mary Garcia  
Mr. & Mrs. Victor R. Garcia

Mr. & Mrs. Dennis J. Gartland  
Mr. & Mrs. Robert L. Geiger  
Mr. & Mrs. Jose Giggilberger  
Mr. & Mrs. E. J. Giliam  
Mr. & Mrs. Tony G. Gomez  
Mr. & Mrs. Xavier Gonzales  
Steven C. Good  
Renee Goodnow  
Mr. & Mrs. William A. Grammer  
Mr. & Mrs. Richard J. Granillo  
Mr. & Mrs. Francis L. Hagar  
Mr. & Mrs. Robert S. Hall  
Mr. & Mrs. Malcolm L. Harbauer, Sr.  
Mr. & Mrs. Vernon Hardin  
Anita Harrington  
Mr. & Mrs. Randy L. Harris  
Mr. & Mrs. Steven F. Hartman  
Mr. & Mrs. Rowland Haynes  
Mr. & Mrs. James G. Hedjazi  
Mr. & Mrs. David J. Henry  
Mr. & Mrs. Michael A. Hewitt  
Mr. & Mrs. Rex Hilbig  
Mr. & Mrs. Isaac Hill  
Catalina Hizon  
Mr. & Mrs. Kirk G. Howard  
Mr. & Mrs. C. A. Huereque  
Mr. & Mrs. Robert J. Huey  
Ms. Maria Y. Hutchison  
Ms. Donna J. Janewicz  
Ms. Linda Jennings  
Mr. & Mrs. Jeff Johnson  
Mr. & Mrs. Richard Johnson  
Mr. & Mrs. Robert Johnson  
Mr. & Mrs. Stephen M. Jokela  
Rachel Jones  
Dorothy Joseph  
Mr. & Mrs. Antony J. Kackery  
Diane M. Kalinisan  
Mr. & Mrs. Michael M. Karpman  
Cpt. & Mrs. Gary H. Kelly  
Mr. & Mrs. James Kettering  
Tac Kyu Kim  
Mr. & Mrs. Jerald D. King  
Mable Y. Knight  
Dr. & Mrs. Howard W. Knowlton  
Mr. Mrs. Fred Kramer  
Mr. & Mrs. Warren Kromer  
Mr. & Mrs. James A. Kulbacki

Mr. & Mrs. Mikhail Kutsy  
Linda Laduke  
Mr. & Mrs. John P. Lang  
Mr. & Mrs. Shan M. Vandiver  
Mr. & Mrs. Jack A. Lenertz  
Mr. & Mrs. Wally Little  
Mr. & Mrs. Richard Loken  
Kathleen O. Longino  
Mr. & Mrs. Jorge M. Lopez  
Mr. & Mrs. Jose L. Lopez  
Mr. & Mrs. Joseph G. Lopez  
Mr. & Mrs. Narvil Lowe, Jr.  
Mr. & Mrs. Ronald Lubey  
Mr. & Mrs. John W. Lyons  
Mr. & Mrs. Malcolm MacMillan  
Mr. Donald G. Magness  
Mr. & Mrs. Manuel Maldonado  
Mr. & Mrs. Joel H. Mallory  
Mr. & Mrs. Richard Markley  
Mr. & Mrs. Floyd Martinez  
Mr. & Mrs. Francis R. Mathe  
Maria Matos  
Mr. & Mrs. Robert L. McAdams  
John N. McCabe  
Mr. & Mrs. Joseph L. McNeil  
Mr. & Mrs. Michael L. McVicar  
Mr. & Mrs. Robert H. Meinking  
Olga Middaugh  
Mr. & Mrs. Thomas C. Mohan  
Mrs. Jessie J. Monfleury  
Dr. & Mrs. Louis G. Monville, Jr.  
Mr. & Mrs. Thomas W. Moore  
Mr. & Mrs. Charles Moree  
Cheryl J. Moser  
Mr. & Mrs. Richard A. Mosher  
Mr. & Mrs. Leon Munn  
Mr. & Mrs. Frank Nudge  
Mr. & Mrs. Fernando D. Nuesca  
Mr. & Mrs. Stanford Olin  
Mr. & Mrs. Lawrence W. O'Nan  
Mr. & Mrs. Jose Orsua, Jr.  
Mr. & Mrs. Karl Osborn  
Mr. & Mrs. Roy T. Oshiro  
William Palmer  
Mr. & Mrs. John Papavero  
Mr. & Mrs. Anthony E. Pasco, Jr.  
Jagdish Patel  
Mr. & Mrs. David Patterson  
Ltl. & Mrs. Joseph T. Patterson  
Patricia D. Paxton  
Mr. & Mrs. Gill Peaslee  
Mr. & Mrs. Luis A. Pedace

James H. Pester  
 Kathy Peter  
 Mr. & Mrs. Maurice C. Pivonka  
 Mr. & Mrs. Jason Plowry  
 Mr. & Mrs. Michael D. Poland  
 Mr. & Mrs. Guenter S. Posjena  
 Mr. & Mrs. Lance O. Presnall  
 Mr. & Mrs. Richard Preston  
 Mr. & Mrs. Jerome J. Prideaux  
 Suzana Prieto  
 Mr. & Mrs. Melvin C. Qualls  
 Mr. & Mrs. Ben Ramirez  
 Agripina M. Razo  
 Mr. & Mrs. Gregory S. Reed  
 Mr. & Mrs. H.C. Reed, Jr.  
 Leon Reed  
 Mary Reed  
 Mr. & Mrs. Donald Regis  
 Robert J. Keller  
 Janice Lynn Retherford  
 Alma Reyes  
 Dorothy K. Rhone  
 Mr. & Mrs. Timothy S. Ricker  
 Mr. & Mrs. Robert Rickli  
 Mr. & Mrs. William F. Rock  
 Mr. & Mrs. Kerry Rogers  
 Lucy Roque  
 Sharon C. Ross  
 Katherine Rossler  
 Col. & Mrs. Benjamin S. Roth  
 Ray E. Royster, Sr.  
 Pat Saenz  
 Mr. & Mrs. Samuel Salas  
 Mr. & Mrs. Tomas Salbino  
 Mrs. Martha G. Sanchez  
 Mr. & Mrs. Mel A. Santiago  
 Antoinette M. Santrock  
 Mr. & Mrs. Branko Sarh  
 Mr. & Mrs. Lyle Schnelle  
 Mr. & Mrs. Norbert L. Schwecke  
 Mr. & Mrs. Louis Serrano, Sr.  
 Mr. & Mrs. Harvey C. Shaw  
 Mr. & Mrs. Lee Shealy  
 Margaret A. Shearer  
 Mr. & Mrs. Frank L. Sherman  
 Mr. & Mrs. Greg S. Shier  
 Elizabeth Sisson  
 Robert A. Slaman  
 Mr. & Mrs. Salvador Soriano  
 Mr. & Mrs. Cecil E. Stewart  
 Darcia Stewart  
 Mary Betty Stockham

Judith M. Strack  
 Mr. & Mrs. Michael Sullivan  
 Mr. & Mrs. Marvin Swetkovich  
 Zubair Syed  
 Mr. & Mrs. Ronald E. Talbot  
 Stacy Tenace Stinnett  
 Susan K. Thornburg  
 Mr. & Mrs. Mark C. Timbang  
 Mr. & Mrs. Keith C. Tompkins  
 Susanne C. Totzke  
 Mr. & Mrs. Roy S. Tripi  
 Mr. & Mrs. Dennis Troesh  
 Mr. & Mrs. Camilo N. Troncoso  
 Nelicia D. Tuazon  
 Marguerite Ullrich  
 Mr. & Mrs. Jesus Uribe  
 Mr. & Mrs. Vincent Vanni  
 Mr. & Mrs. Adelaido R. Vasquez  
 Mr. & Mrs. Steven Vasquez  
 Gloria J. Viscomi  
 Mr. & Mrs. Gary E. Walcher  
 Elizabeth R. Walker  
 Mei Chung Fan Wang  
 Micki Warm  
 Mr. & Mrs. James Welker  
 Mr. & Mrs. Robert K. Wessman  
 Dr. & Mrs. Kenneth E. Wical  
 Mr. & Mrs. James E. Williams, Jr.  
 Syble Williams  
 Mr. & Mrs. Melvin Wilson  
 Mr. & Mrs. Larry Wineinger  
 Mr. & Mrs. James Woodson  
 Mr. & Mrs. Alfred A. Wright  
 Mr. & Mrs. Nobuo Yamanaka  
 Mr. & Mrs. Jerry L. Young  
 Mr. & Mrs. Vincent Zamora  
 Mr. & Mrs. Guadalupe S. Zaragoza

## OTHER FRIENDS

### ALUMNI

Julie L. Abner '90  
 Kevin D. Aguilar '78  
 Michael G. Ainsworth '75  
 Brian Alvarez '94  
 Kathleen L. Appfel '90  
 Ken Baker '94  
 Constance A. Barhyte '90  
 Edna W. Bartholomew '94  
 Carol L. Beck '87  
 Phyllis P. Bee '81

Jack A. Bowles '72  
 Stacy M. Bowles '90  
 Kimberly Brewer '91  
 Nancy A. Brown '87  
 Marina M. Burke '79  
 Bruce H. Burton '80  
 James L. Campanelli '89  
 Kathleen M. Carbaugh '91  
 Leland F. Carmean '79  
 Sharon O. Carson '91  
 Gloria D. Carter '78  
 John A. Carville '91  
 Shannon J. Casey '92  
 Robert J. Casillas '90  
 Beth C. Caslav '92  
 Marsha K. Churchman '79  
 Donald E. Colletti '73  
 Richard M. Collins '82  
 Mary J. Comadena '86  
 Bonnie Congdon '89  
 Louise R. Connal '83  
 Rita C. Coronado '91  
 Henry R. Curwen '85  
 Fancy Davis '79  
 Vicki De Biase '94  
 Grace Dempsey '91  
 Carmela M. DePrisco '90  
 Rick Diaz '89  
 John E. Diebold, Jr. '86  
 John W. Dodson '71  
 Ann Marie Donoghue '94  
 Toni K. Dodson '71  
 Dennis L. Dowdy '79  
 V. Kay Downer '91  
 Margie L. Drumm '83  
 Pamela A. Edmondson '84  
 Sharon M. Egan '77  
 Caroline C. Epperson '90  
 Jim Ferranti '85  
 Lisa A. Fitch '92  
 Charles W. Flack '90  
 Gail Flathers '91  
 James P. Flood '94  
 Vickie Flores '81  
 Shirlee J. Flowers '69  
 Gena F. Foisy '92  
 Monica A. Ford '87  
 Gregory A. Franklin '89  
 Linda J. Garfield '78  
 Maureen A. Garrity '80  
 Bruno Gavrilova '75  
 Stephen M. Gianni '75  
 Cheryl A. Gilbert '84  
 Marilyn F. Glick '81  
 Mark A. Gordon '92  
 Vincent T. Grosso '74  
 Maureen T. Gummow '85  
 Laurel E. Gunderson '89  
 Earl C. Hackett '90  
 Christopher R. Hale '91  
 Helena Halmari '90  
 Michael C. Hanisee '74  
 Richard A. Hawthorne '90  
 Eric W. Hayden '72  
 Hugh W. Heney '78  
 Barbara A. Henley '86  
 Kathy J. Hennessey '92  
 Julie F. Hoffman '90  
 Miriam Holdaway '81  
 Phillip W. Holdaway '81

April L. Holmes '89  
 Geraldine C. Iacobelli '85  
 Ann Imlay-Spangler '91  
 Darcel M. Jamerson '89  
 Phillip A. Jamison '90  
 Marion Jensen '72  
 Mark Johnson '94  
 Florence M. Johnston '87  
 Kenneth E. Jolly '73  
 Jeanie A. Kearney '90  
 Susan M. Kenaga '81  
 Steve Kenyon '94  
 Margaret F. Kugler '86  
 Stephen W. Langjahr '70  
 Teresa A. Lawton '91  
 Curtis B. Lewis '90  
 Patrick J. Lewis '88  
 Margaret Livingston '77  
 George C. Lonberger '74  
 Christine M. Lowe '88  
 Robert T. Mapp, Jr. '94  
 Wayne K. Marcum '91  
 David H. Martin '94  
 Roy W. Martin '79  
 Iris Q. Mayers '83  
 John McDonald, Jr. '77  
 Randall W. Meadows '91  
 Lisa D. Meyering '92  
 Gloria S. Molino '86  
 Kim A. Mollenkamp '91  
 Martha P. Mondello '91  
 Regginald G. Moore '94  
 Frank Morales '94  
 Robert Morales '68  
 Mary J. Mosby '92  
 Junius Murray '94  
 Sue E. Nagel '69  
 Beth M. Negrey '90  
 Scott H. Nelson '91  
 Ann B. Nobile '79  
 Margaret J. Olinger '72  
 Taryn W. Ontiveros '90  
 James E. Owens '83  
 Porfirio G. Pacheco '92  
 Carol L. Palko '91  
 Ann P. Palmieri '90  
 Charles Palmieri '77  
 Kathy Peach '85  
 Shelley L. Pope '81  
 Richard A. Porter '78  
 Cynthia R. Preston '91  
 Janelle L. Radovich '92  
 Corine J. Ramey '90  
 David M. Reynolds '81  
 Katherine M. Richter '88  
 Elaine J. Ringoot '71  
 Jodine M. Runberg '94  
 John L. Safford '80  
 Virginia Safford '77  
 Delores L. Salomon '85  
 Geraldine M. Scanlon '73  
 Audelia Simpson '91  
 Fred W. Simpson '94  
 Janet A. Simpson '85  
 Duane A. Slaman '90  
 William J. Smith '83  
 Lisa A. Snell '90  
 David F. Spinka '89  
 Constance L. St. John '73  
 Angela K. Sundquist '91

Gary D. Sveum '72  
 Dennis N. Taylor '88  
 Jeannine L. Thompson '91  
 Jeanne S. Thornton '72  
 Susan A. Trost '84  
 Robert L. Underwood '88  
 Emleen S. Uy Godinez '89  
 Edward F. Vickers '85  
 Lupe Viramontez '83  
 Alan Wade '94  
 Anita L. Wasinger '81  
 Marcia C. Weaver '74  
 Kelly L. Wheeler '88  
 Marjorie L. White '91  
 Diane S. Whitehead '81  
 Catherine E. Whitmore '82  
 Diana Whitney '92  
 Dolores Wilcoxon '70  
 Frank R. Wild '91  
 Sharon Wild '91  
 Carol A. Wiley '77  
 Vita M. Willett '91  
 Patricia A. Wilson '84  
 William D. Wilson '94  
 Yi-Chuan Wu '91  
 Kelly J. Yearwood '94  
 Paveena Zibell '87

## BUSINESSES & ORGANIZATIONS

CA Inland Empire Council  
 Boy Scouts  
 California Women for Agriculture  
 Department of Water Resources  
 Earthwatch  
 East Valley Resource Conservation District  
 Friends of the Foothills  
 Guided Discoveries  
 Metropolitan Water District of Southern California  
 Rialto Community Players  
 Sierra Club, San Geronio Chapter  
 Trees Are For People

## EMPLOYEES

Carlos Juarez

## FORMER EMPLOYEES

Dr. Joe Bas  
 Dr. Melvin Hawkins  
 Dr. Clifford T. Paynton

## FRIENDS

Mr. & Mrs. Robert M. Aldama  
 Mr. & Mrs. Charles L. Bahner  
 Mr. & Mrs. Steven C. Bailey  
 Mr. & Mrs. George Battey  
 Henry Beserra  
 Marla Bissell  
 Mr. & Walter Bludworth

Terry L. Boatright  
 Rosaline J. Bonilla  
 Mr. & Mrs. Scott Bradford  
 Shirley Brinegar  
 Robert J. Brooks  
 Gratice E. Brown  
 Mr. & Mrs. Roy L. Brownie  
 Ruby Cabral  
 Dr. James A. Collier  
 Mr. & Mrs. Dale Cooley  
 Mr. & Mrs. James G. Cregg  
 Barbara J. Dickens  
 Dr. & Mrs. Eugene L. Dybowski  
 Donna M. Espinoza  
 Mr. & Mrs. Saleem Fatani  
 Mr. & Mrs. Efrain Figueroa  
 Patricia S. Griffin  
 Mrs. Reynolds C. Gross  
 Rebecca S. Hart  
 Mr. & Mrs. Anton W. Heil  
 Mr. & Mrs. Steve Henthorn  
 Kristin Herchenroeder  
 Mr. & Mrs. Steven Herzog  
 Odelia M. Holmon  
 Kay K. Horine  
 Lori Hupp  
 Hon. & Mrs. William H. Hyer  
 Mr. & Mrs. Karl M. Joehneck  
 Joy D. Kelley  
 Mr. & Mrs. Walter Kennedy  
 Nancy Knezetic  
 Jennifer Kulbacki  
 Jay A. Lariviere  
 Mr. & Mrs. Glenn A. Lincoln  
 Mr. & Mrs. Steven M. Lipan  
 Margaret Lopez  
 Mr. & Mrs. Dwayne A. MacDonald  
 Mr. Michael-Jerome Manley  
 Mr. & Mrs. Rafael Martinez  
 Arthur E. Mays  
 Gene L. Mazzei  
 Mambwe L. Mbewe  
 Dorcas C. McAllister  
 Mr. & Mrs. Dennis McFadden  
 Mr. & Mrs. David J. McLendon  
 R. Craig Meireis  
 Philip M. Merghart, Jr.  
 Mr. & Mrs. Joseph Molamphy  
 Danny Moncayo  
 Mr. & Mrs. David T. Munoz, Jr.  
 Martin W. Nakunz

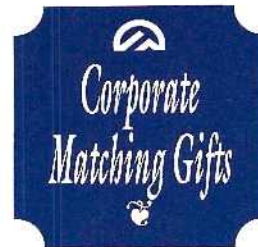
Mr. & Mrs. John W. O'Brien  
 Joseph A. O'Brien  
 Mr. & Mrs. Woodrow O'Dell  
 Mr. & Mrs. Gary S. Olin  
 Ava M. Patterson  
 Donna A. Pitell  
 Mr. & Mrs. Jeff Poindexter  
 Steve Powell  
 Gerard A. Quatrochi  
 Mary J. Reasby  
 Doloralee Reichard  
 Mr. & Mrs. Wilfredo Rentas  
 Mr. & Mrs. Peter R. Rosati  
 Mr. & Mrs. Paul D. Rose  
 Paul H. Rosenberg  
 Mr. & Mrs. Douglas Rowand  
 Michael T. Salgado  
 Cheryl L. Saltzman  
 Mr. & Mrs. Todd Schon  
 Mignon M. Schweitzer  
 Veda D. Seaton  
 Mr. & Mrs. Alan G. Simons  
 Dottie L. Sims  
 Dr. David L. Slough  
 Cynthia L. Spencer  
 Helene Streck  
 Mr. & Mrs. George R. Sutton  
 Mr. & Mrs. Andrew B. Taylor  
 Mr. & Mrs. Robert A. Thompson  
 Mr. & Mrs. James Tossetti  
 Michael G. Trumbull  
 Mr. & Mrs. Lawrence C. Truscott  
 Mr. & Mrs. Alberto Uribe  
 Otilia Vargas-Corona  
 Mr. & Mrs. Gerald C. Walsh  
 R. Norton Walther  
 Kerri J. Warner  
 Mr. & Mrs. W. C. Wellman  
 Michael K. Wheeler  
 Mr. & Mrs. Leonard C. Williams  
 Mr. & Mrs. Rowland Williams

#### PARENTS

Mr. & Mrs. Carlos H. Alfaro  
 Tracy G. Amador  
 Mr. & Mrs. John V. Armstrong, Jr.  
 Anthony J. Bellanca, Jr.  
 Yvonna E. Betten  
 Mr. & Mrs. Hector Cachu  
 Mr. & Mrs. Antonio Cardenas  
 Mr. & Mrs. Arturo Concepcion

Mr. & Mrs. Leonard Contreras  
 Mr. & Mrs. Jerold R. Copeland  
 Mr. & Mrs. Ronald D. Davies  
 Mr. & Mrs. R. C. Davis  
 Mr. & Mrs. Alfredo Del Rosario  
 Mr. & Mrs. Perry Erickson  
 Mr. & Mrs. Antonio A. Figueroa  
 Mr. & Mrs. Larry S. Funk  
 Mr. & Mrs. Fernando Gaytan  
 Mr. & Mrs. James M. Geiser  
 Mr. & Mrs. Donald Gilbertson  
 Mr. & Mrs. Edwin B. Gritters  
 Linda J. Heald  
 Mr. & Mrs. Denis W. Heimerman  
 Mr. & Mrs. Mario V. Heredia  
 Mr. & Mrs. Heliodoro R. Hernandez  
 Valerie K. Honeyfield  
 Mr. & Mrs. John L. Ibbetson  
 Mr. & Mrs. William F. Kallweit  
 Barbara Kent-Malbrough  
 Debbie Lyles  
 Mr. & Mrs. Daniel R. Mares  
 Mr. & Mrs. Charles D. Noble  
 Mr. & Mrs. James E. Nonemacher  
 Mr. & Mrs. William Nord  
 Belen Olario  
 Mr. & Mrs. Walter E. Parker, Jr.  
 Mr. & Mrs. Carlos Perez  
 Mr. & Mrs. Bruce T. Petersen  
 Phouphit Phayrin  
 Gloria Pitchford  
 Katherine A. Reagan  
 Mr. & Mrs. Manuel Reyes  
 Mr. & Mrs. Brett A. Roberts, Sr.  
 Fonda Salonder  
 Lucille M. Sanchez  
 Mr. & Mrs. Joel Schechter  
 Mr. & Mrs. Robert J. Schoeffler  
 Larry Sieks  
 Mr. & Mrs. James W. Snow  
 Mr. & Mrs. Howard Stempson  
 Sharon Thompson  
 Mr. & Ms. James D. Vandraiss  
 Mr. & Mrs. Laszlo Vass  
 Mr. & Mrs. Bernard A. Verwiel

Gail B. Webb  
 Mr. & Mrs. Donald R. Weimer  
 Mr. & Mrs. Pete Weststeyn  
 Mr. & Mrs. Randall L. Wright



The university thanks the individual donors who took the time to initiate a matching gift, and we salute the following companies whose generous matching contributions encourage their employees to support high-quality education at Cal State. (Matching gifts initiated in 1992-93 but not yet received will appear in next year's Honor Roll.)

American Telephone & Telegraph  
 for Danny W. Thomazin '76

Best Products Company, Inc.  
 for T. Lamar Carithers '78

Ernst & Young  
 for Sarah J. Anderson  
 Donald N. Ecker

Fannie Mac  
 for Elizabeth Ann Scholz '87

Fluor Corporation  
 for Colin R. Cooper

General Dynamics, Valley Systems  
 for Sue E. Kendall

General Electric Co.  
 for Lyle G. Spalding

General Telephone Co., San Bernardino  
 for Clyde Bruce Foytik

Hughes Aircraft Co.  
 for Sue E. Kendall

ICI Americas, Inc.  
 for Dr. Frank X. Woolard '71

IDS Financial Services, Inc.  
 for Paul R. Mata '87

IBM  
 for Al Taroli  
 Trudy Ann White

Nalco Chemical Company  
 for Michael Stanbrough

National Medical Enterprises, Inc.  
 for Mary K. Hammack

North American Philips Corporation  
 for Arthur Doktorczyk

Occidental Oil & Gas Corporation  
 for Michael Meehl '74

RJR Nabisco  
 for Rudolph Liggins '76

Rockwell International Corp.  
 for Charles F. Lytle

SmithKline Beecham  
 for Edwin E. Raffel

Southern California Edison Co.  
 for Charles Sparks, Jr.

Specialty Minerals, Inc.  
 for Linda J. Lingo '82  
 James R. Mulkey

Transamerican Insurance Group  
 for Kenneth P. Guillaume '78

TRW, Inc.  
 for Edward Bennett '88  
 Dr. Shirlee Joe Flowers '69

Kat Grossman '83  
 Deborah Harris '91  
 Richard Johnson  
 Phylis Jones  
 Thomas C. Mohan  
 Ismael Paredes '70

Wells Fargo Bank  
 for Mitzi Walker Wells '71

Witco Corporation  
 for Roy T. Teramoto

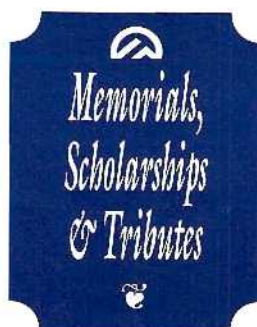
Zurich-American Foundation  
 for Marna V. Boch '87



Each year Cal State receives gifts of equipment, books, furniture and other physical property. These special items enrich our art collections, our library, and our computer laboratories, enhance faculty research and instruction, and support cultural and recreational activities. We are pleased to recognize these donors of gifts-in-kind during the 1992-93 fiscal year.

A Armand's Tri-City Signs  
Adidas  
Aldila, courtesy of  
Gary Oechsle  
Max & Diane Alonso  
America West Airlines  
Anheuser-Busch, Inc.  
Apple Computer Inc.  
Arrowhead Country Club  
Ascom Communications, Inc.  
Bank of America  
Black Angus Restaurants  
Thomas Butler  
Chevron U.S.A., Inc.  
Chili's Grill & Bar  
Continental Airlines  
Corona Clay  
Melba Deidrick  
Delmy's Subway  
Disneyland  
Darryl Drage  
Dennis Duarte  
El Rancho Verde Country Club  
Exxon Research  
First American Title Co.  
Louis Fox  
GTE California  
Garments To Go  
Dr. Bruce Golden  
Vince Graves  
William E. Gray  
Joe Greensleeves Restaurant  
Kat Grossman '83  
Wolfgang J. Haack  
Kenneth & Rita Haerr  
James Hansen  
The Hilton of San Bernardino  
Robert & Cory Holder  
IBM  
Jerseys Pizza  
Knotts Berry Farm

Drs. Benjamin & Miriam Kovitz  
L. A. Cellular Telephone Co.  
Las Vegas Visitors & Convention Bureau  
Dr. Robert A. Lee  
Martin Marietta  
Astronautics Group  
Jane Matthews  
Polly Mazziotta  
McCallum Theatre for the Performing Arts  
Ruth O. Mercer  
National Orange Show  
Newport/Klinger Corporation  
NIKE Inc.  
Oak Valley Golf Club  
Richard Oliphant  
Oscar's Mexican Restaurant  
Pleasant Hawaiian Holidays  
Presley Institute  
Dr. Greg Price  
Dr. Jerrold Pritchard  
Ramada Inn, San Bernardino  
Joe Rixman  
Diana Z. Rodriguez '90  
Dr. & Mrs. Irving Root  
Sam's Custom Golf  
San Bernardino County Central Credit Union  
San Bernardino County Dept. of Public Social Services  
Sav-On Drug Stores  
See's Candies  
Shandin Hills Golf Club  
Mike Shannon  
Sloan to Sloan Printing  
Southwest Airlines  
Spirit Baseball Club  
Sprint  
Sue Strain  
Su Casa  
Subway Sandwiches & Salads  
David L. Suenram  
Sun Lakes Country Club  
David J. Tseklenis  
Uniglobe Crown Travel  
UPS  
Victorville Golf Course  
Viking Tires  
Williams Development Corp.  
Fred X



The university gratefully acknowledges the generosity and thoughtfulness of these individuals, groups, and organizations who made special gifts in 1992-93 in honor of or in memory of a friend, colleague or family member.

#### JOSEPH A. BAILEY EMERGENCY LOAN FUND

Joseph A. Bailey †  
Rudolph J. Skubic  
Spiritual Unity  
Movement Church

#### THE MICHAEL KHOKLOV SCHOLARSHIP FUND

Rebecca  
Warren-Marlatt '82  
Mr. & Mrs. Jason D.  
Plowry

#### THE LAWRENCE L. DANIELS SCHOLARSHIP

Lawrence L. Daniels '76

#### THE BRANTLEY, CARRAWAY & FUTCH SCHOLARSHIP

California Association  
of Black Correctional  
Workers

#### THE MOHAMED & SENEA EL-MAHDY EL-AHRAF FUND

Dr. & Mrs. Amer M.  
El-Ahraf

#### THE FAROUK EL-MAHDY EL-AHRAF MEMORIAL SCHOLARSHIP

Dr. & Mrs. Amer M.  
El-Ahraf

#### THE LESLIE HARRIS & BENNET MEYERS MEMORIAL SCHOLARSHIP FUND

Mrs. Marian W.  
Horine  
Mrs. Bennet A. Meyers  
Mrs. Ben E. Nordman  
Dr. & Mrs. John M.  
Pfauf

#### THE KIM HUGHES MEMORIAL SCHOLARSHIP

Patricia M. Hughes  
J. B. Keith Humphreys  
Harold Jasmon  
Mr. & Mrs. Stephen D.  
Preston '91

#### THE JOHN WINN KENNEDY, SR. ECONOMICS SCHOLARSHIP

Hon. & Mrs. John W.  
Kennedy, Jr.  
Mr. & Mrs. John W.  
Kennedy, Sr. '79

#### THE ROGER BROADFOOT MEMORIAL SCHOLARSHIP

Dr. Mary Ann Wagner

#### THE ARLENE ROBERTS MEMORIAL SCHOLARSHIP

Dr. James D. Thomas

#### THE DONALD W. JORDAN MEMORIAL SCHOLARSHIP

Mr. & Mrs. Allen B.  
Gresham

#### THE FRANCES LOUISE DAVIDSON CRUM SCHOLARSHIP

Dr. A. Vivien & Mr.  
Tony Bull  
Dr. James D. & Mrs.  
Anne Crum '76

#### THE THOMAS ZEUGNER MEMORIAL SCHOLARSHIP FUND

Cpt. & Mrs. Larry R.  
Lenkeit '87

#### THE SHELBY OBERSHAW TEACHER EDUCATION FUND

Mr. & Mrs. Charles D.  
Obershaw

#### THE DR. A. VIVIEN BULL SCHOLARSHIP

Dr. & Mrs. Edward J.  
Bostley  
Elois P. Johnson '87  
Scott H. Nelson '91  
Audelia Simpson '91  
Dr. J. Paul Vicknair  
Mr. & Mrs. Ryan R.  
Williams '91

#### THE CLARA B. MCKINNEY ENDOWED SCHOLARSHIP

Clara B. McKinney &  
Friends

#### THE JACK H. BROWN SCHOLARSHIP IN BUSINESS AND PUBLIC ADMINISTRATION

Food Industries Sales\*  
Club

\*More than 800 individuals  
and corporations contributed to  
the Jack H. Brown Scholarship  
through the Food Industries  
Sales Club of Riverside and San  
Bernardino Counties.

#### THE STANFORD C. SHAW MEMORIAL SCHOLARSHIP

Dr. Earle B. Blakeslee  
Walter Bludworth  
Mr. & Mrs. William J.  
Brunick  
Marlou D. Casebier  
Etiwanda Community  
Church  
Glenn & Diane Shaw  
Franklin  
Robert S. Frost  
Mr. & Mrs. Warren  
Fuller  
Mr. & Mrs. Chris J.  
Hoekstra  
Mr. & Mrs. Stanley L.  
Jandt  
Mr. & Mrs. Karl M.  
Jochnck  
Dr. & Mrs. Franklin S.  
Lewis  
Mr. & Mrs. Dennis  
McFadden  
Mr. & Mrs. Woodrow  
O'Dell  
Ava M. Patterson  
Mr. & Mrs. Ronald B.  
Rayner  
Ted Robertson  
Mr. & Mrs. W.B.  
Robinson  
Frances A. Ruark  
Douglas R. Shaw  
Mrs. Stanford C. Shaw  
Helen S. Swim  
Mr. & Mrs. Robert A.  
Thompson

C. L. Trine  
United Outdoor  
Advertising Co.  
Kerri J. Warner  
Wednesday Evening  
Bridge Club  
Mr. & Mrs. Larry J.  
Williams

#### THE HAL HOVERLAND SCHOLARSHIP ENDOWMENT FUND

Dr. Otto Chang  
Dr. Linvol G. Henry  
Dr. Hal & Mrs.  
Marjorie Hoverland  
'73  
Dr. & Mrs. Sung-Kyoo  
Huh  
Laura Jean Kreissl '90  
Dr. Joan H. Kritzbeg  
Dr. & Mrs. Eldon C.  
Lewis  
Lynda J. O'Brien  
Drs. L. Curtis  
Westbrook, Jr. &  
Cynthia E. Bird

#### THE ARLO D. HARRIS SCHOLARSHIP FUND

Dr. Arlo D. Harris

#### THE RASMUSSEN ENDOWMENT FOR ANTHROPOLOGY

Floyd Rasmussen '73

#### OTHER GIFTS IN MEMORIAM

In Memory of Steve  
Coffey '82, '84  
Rebecca  
Warren-Marlatt  
'82

In Memory of Eunice  
"Maggie" Dierich  
Mary C. Colacurcio



#### CSUSB AFFIRM

We extend a sincere thanks to the following music lovers who are the current members of AFFIRM.

(Alumni, Faculty &  
Friends for the Illumina-  
tion & Recognition of  
Music)

Bonnie Ainsworth  
Mr. & Mrs. Albert Andon  
Anonymous  
Mr. & Mrs. J. E. Badgley  
Lois Battersby  
Rosemary Binney '69  
Dr. James Blanchette  
Dr. & Mrs. Edward  
Bostley  
Mr. & Mrs. Stuart  
Campbell  
Mr. & Mrs. Donald L. Day  
Mr. & Mrs. Charles  
Donovan  
Dr. & Mrs. Eugene  
Dybowski  
Mr. & Mrs. Mike Dymond  
Dr. & Mrs. Anthony H.  
Evans  
Mr. & Mrs. R. E. Evans  
Mr. & Mrs. Mark L. Fife  
Dr. & Mrs. Loren Filbeck  
Annette Franjie  
Dr. Catherine Gannon  
Harriet Gibson '87  
Dr. & Mrs. Dennis Hefner  
Mr. & Mrs. Robert D.  
Koon  
Dr. & Mrs. Benjamin  
Kovitz  
Harry R. Lambert  
Roger & Kathy Lintault  
Evelyn Magnuson  
Mr. & Mrs. Danny  
Manolis  
Dr. & Mrs. Larry E.  
McFatter  
Mary McKenzie  
Patricia McKinster '85  
Mr. & Mrs. William A.  
Newman  
Jerry & Diane Olsen  
Jana C. Ondrechen-Wible  
'80  
Mrs. Andrew G. Robertson  
Dr. & Mrs. Irving Root  
Mr. & Mrs. Mark Seifert  
Dr. Mary F. Smith  
Dr. & Mrs. David Stine

#### CSUSB ATHLETICS ASSOCIATION

The contributions of the following friends make it possible for the university to compete at the NCAA Division II level. For their generous and enthusiastic support of the Cal State Coyotes, we extend a very special thanks to our CSUSB Athletics Association members.

Mr. & Mrs. Robert M.  
Aldama  
Max Alonso  
Dr. Walter Anderson  
Mr. & Mrs. Allen H.  
Andrews  
Anheuser Busch Inc.  
Apple Valley Surgery  
Center  
Ayres Ezer Lau, Inc.  
AYSO Cultural Exchange  
Mr. & Mrs. Buckley B.  
Barrett  
Dr. & Mrs. Joe Bas  
Mr. & Mrs. Stephen P.  
Batcha  
Mr. & Mrs. George Battey  
Mr. & Mrs. John Beckley  
Luvina Beckley  
Lynda C. Beckley  
Carde Bellamy  
Bench's Custom Painting  
Virginia L. Berry '72  
Rosalie Besses  
Best, Best & Krieger  
Mr. & Mrs. Art Bias  
Mr. & Mrs. Allen Bogh  
Mr. & Mrs. Miles Bogh '78  
Brinker Restaurant Corp.  
Robert J. Brooks  
Ruby Cabral  
CAL PAC Construction,  
Inc.  
Mr. & Mrs. Anthony F.  
Calma  
Carousel Mall Merchants  
Association  
Meridee Casey  
Mr. & Mrs. Stephen D.  
Christensen  
Mr. & Mrs. Alex  
Chronopoulos  
Mr. & Mrs. Henry Coates  
Dr. Nathan Coffin  
Mary C. Colacurcio  
Dr. James A. Collier  
Corinthians F.C.  
Mr. & Mrs. Nicholas J.  
Coussoulis '75  
Nicole C. Crimmins  
Crown Printers  
CSUSB Extended  
Education  
Mr. & Mrs. Alan H. Dale  
Lawrence L. Daniels '76  
Mr. & Mrs. Richard  
Delmonico  
Mr. & Mrs. David P.  
DeMauro '87  
Jim DiCamilli  
Farriel Dobard  
Michael S. Duncan  
Mr. & Mrs. Larry Egan  
David S. Espinosa  
Dr. & Mrs. Anthony H.  
Evans  
F. T. Andrews, Inc.  
Mr. & Mrs. Efrain  
Figueroa  
Dennis M. Finn

Dr. & Mrs. Luis L.  
Francisco  
Mr. & Mrs. Larry Franklin  
Friends of Golf, Inc.  
Mr. & Mrs. Ron S.  
Galvan, Sr.  
Mr. & Mrs. Rudy Garcia  
Mr. & Mrs. Robert Garcia  
Mr. & Mrs. Florentino  
Garza  
GTE, San Bernardino  
GTE, Riverside  
Mr. & Mrs. Raymond  
Georgevits  
Brian Gillespie  
Bob E Glasser '89  
Mr. & Mrs. Perry Glover  
Golden Valley Medical &  
Oxygen Service  
Dr. Juan C. Gonzalez &  
Ms. Irene Hoffman  
Patricia Rodgers Gordon  
& Michael Gordon '87  
Grand Terrace Soccer  
Club  
Mr. & Mrs. Londell  
Graves  
Frank L. Gray  
Greenwood Bail Bonds  
Bart Groninger  
Nick Guadagnoli, Sr.  
Hanover & Schnitzer  
James L. Hansen  
Anita Harrington  
Head Quarters Hair  
Design  
Mr. & Mrs. Charles M.  
Healy  
Mr. & Mrs. Donald R.  
Hellon  
Mr. & Mrs. Steve  
Henthorn  
Kristin Herchenroeder  
Mr. & Mrs. Joseph  
Hichman  
Mr. & Mrs. Charles  
Hickey, Sr.  
Holiday Oldsmobile-  
Mazda  
Kay K. Horine  
Hospitality Dental Group  
Mark L. Hoy  
Lori Hupp  
Hon. & Mrs. William H.  
Hyer  
Inland Group Inc.  
Mr. & Mrs. Donald T.  
Irving  
Harriet I. Jason  
Jerseys Pizza  
Rachel Jones  
Carlos Juarez  
Dr. & Mrs. L. Lynn Judd  
Kassel & Kassel Law Corp  
Mr. & Mrs. Victor P.  
Keaton '77  
Mr. & Mrs. Walter  
Kennedy  
Mr. & Mrs. Jerald D. King

Kiwanis Club of San  
Bernardino  
Kiwanis Club of Greater  
San Bernardino  
Mr. & Mrs. Allyn H.  
Kruse '83  
Mr. & Mrs. James A.  
Kulbacki  
Jennifer Kulbacki  
Dr. Kenneth E. Lane  
Pamela D. Langford '85  
Mr. & Mrs. Jian-Chun  
Lian  
Mr. & Mrs. Steven M.  
Lipan  
Margaret Lopez  
L. A. Cellular Telephone  
Co.  
Dr. Janice Loutzenhiser  
Mr. & Mrs. Franklin G.  
Maberry  
Mr. & Mrs. Mike Main  
Mr. & Mrs. Michael  
Mapstead  
Mr. & Mrs. Rafael  
Martinez  
Matich Corporation  
Gene L. Mazzei  
Mary C. McCully  
Hon. James C. McGuire  
Mr. & Mrs. David J.  
McLendon  
B. Gregory McPhate  
R. Craig Meireis  
Mr. & Mrs. Joseph  
Molamphy  
Danny Moncayo  
Mr. & Mrs. Bill Montello  
Mr. & Mrs. William  
Morris, Jr.  
Cheryl Mosher  
Mr. & Mrs. Richard A.  
Mosher  
Mr. Hill's Catering  
Company  
Mr. & Mrs. David T.  
Munoz, Jr.  
Martin W. Nakunz  
Neal T. Baker Enterprises,  
Inc.  
NEC Business  
Communication  
Systems, Inc.  
Mr. & Mrs. John W.  
O'Brien  
Mr. & Mrs. Gary S. Olin  
Dr. Gary W. Osborne &  
Ms. Sheila Cox  
Paine Webber  
Mr. & Mrs. W. D. Parente  
'85  
Mr. & Mrs. Walter E.  
Parker, Jr.  
Mr. & Mrs. David  
Patterson  
Donna R. Patterson  
Mr. & Mrs. Robert L. Peas  
Mr. & Mrs. Luis A. Pedace  
Mr. & Mrs. David A.  
Peterson

Dr. Thomas J. Pierce  
 Donna A. Pitell  
 Cynthia Pringle  
 Mr. & Mrs. T. Michael Purcell  
 Doloralee Reichard  
 Rick Rogers Drywall, Inc.  
 Mr. & Mrs. Robert Rickli  
 Diana Z. Rodriguez '90  
 Mr. & Mrs. Peter R. Rosati  
 Mr. & Mrs. Douglas Rowand  
 Dr. Judith M. & Mr. Glenn Rymer '70  
 S. Roy Kato Associates  
 Al Saavedra  
 Mr. & Mrs. Danny Sandoval  
 Mr. & Mrs. Mel A. Santiago  
 Mr. & Mrs. Don Saponetti  
 Mr. & Mrs. William E. Savage  
 Mr. & Mrs. Todd Schon  
 Mignon M. Schweitzer  
 Wayne & Nancy P. Simpson  
 Dr. David L. Slough  
 Bob Smith  
 Dirk & Carolyn Smits  
 Mr. & Mrs. James W. Snow  
 Soils Southwest Inc.  
 Athene G. Sparks '84  
 Cynthia L. Spencer  
 George A. Steidle '85  
 Mr. & Mrs. Charles Strain  
 Helene Streck  
 Trudi Sturgeon  
 Mr. & Mrs. David L. Suenram  
 Mr. & Mrs. George R. Sutton  
 Jeffrey L. Sykes  
 Mr. & Mrs. Clarence Taylor  
 Stacy Tenace Stinnett  
 Sharon Tirabasso  
 Mr. & Mrs. James Tossetti  
 Mr. & Mrs. Lawrence C. Truscott  
 Mr. & Mrs. Alberto Uribe  
 Mr. & Mrs. Jesus Uribe  
 Value Custom Homes  
 Mr. & Mrs. Bruce D. Varner  
 Mr. & Mrs. Arnold O. Vignoni  
 Viking Auto Center Inc.  
 Dr. Lawrence R. Walker  
 Mr. & Mrs. Gerald C. Walsh  
 Mr. & Mrs. Robert E. Watkins  
 Mr. & Mrs. W. C. Wellman  
 Mr. & Mrs. Dale West  
 Drs. C. Lester Westbrook, Jr. & Cynthia E. Bird

Michael K. Wheeler  
 Mr. & Mrs. Dennis R. Wilson '84  
 Dr. Peter A. Wilson & Ms. Linda Rodgers  
 Wolff/Lang/Christopher Architects, Inc.  
 Mr. & Mrs. John P. Wood '83  
 Mr. & Mrs. Chester Wray, Jr.  
 Mr. & Mrs. Alan Young  
 Dr. Jenny Zorn & Mr. Andrew Copeland  
 Mr. & Mrs. Victor Zupancich '85

### **FRIENDS OF THE GALLERY**

For their generous support in promoting the visual arts at Cal State and in our neighboring communities, we extend a very sincere thanks to our Friends of the Gallery.

Rosemary T. Binney '69  
 Mr. & Mrs. Scott Bradford  
 Lawrence L. Daniels '76  
 Vicki De Biase  
 Ann Marie Donoghue  
 Dr. & Mrs. Anthony H. Evans  
 Dr. Catherine Gannon & Mr. George K. Iron  
 Dr. & Mrs. Paul G. Godfrey  
 Mr. Howard & Mrs. Kat Grossman '83  
 Dr. Thomas M. Hellwig  
 Phyllis Hellwig  
 Dr. Janice K. Jackson  
 Arlene Leonard '75  
 Roger & Katherine Lintault  
 Mrs. Forrest Ockels  
 Cindy Rinne  
 Dr. Richard Saylor  
 Mr. & Mrs. Robert Sedlak  
 Miryana Szabo  
 Dr. James D. Thomas  
 Dr. J. Paul Vicknair  
 Mrs. Forrest L. West

### **LIBRARY ASSOCIATES**

We are most grateful to the university's friends whose gifts to the Pfau Library help enhance learning opportunities for our students and faculty by strengthening our collections and sponsoring distinguished guest speakers.

### **LIFE MEMBERS**

Dr. & Mrs. William Aguilar  
 Mr. & Mrs. James Alexander

Janet Allen  
 Mr. & Mrs. Marty Bloomberg  
 Frederick Blum  
 Mr. & Mrs. George Bohn  
 Beatriz Busselle  
 Bennett Enterprises  
 Mr. & Mrs. Michael Burgess  
 Dr. Theodore Cohen  
 Dr. & Mrs. William Coleman  
 Gary Cosand  
 Terri De Ment  
 Dr. & Mrs. Anthony H. Evans  
 Samuel Gabriel  
 Dr. Catherine Gannon  
 Dr. & Mrs. Bruce Golden  
 Dr. & Mrs. Bernie Goler  
 Dr. Carol Goss  
 Pamela K. Harer  
 Mr. & Mrs. Larry Harvey  
 Raymond Hedstrom  
 Dr. & Mrs. Abram Hodes  
 Beryl Holcomb  
 Vernon Jacobson  
 Dr. & Mrs. Julius Kaplan  
 Mary Lewis  
 Mr. & Mrs. Arthur Nelson  
 Michael Nelson  
 Walter Nunes  
 Mr. & Mrs. Charles Obershaw  
 James R. Peters  
 Dr. & Mrs. John Pfau  
 Mr. & Mrs. Louis Press  
 James Ragan  
 Johnnie Ralph  
 Joy Risser  
 Dr. & Mrs. Donald Rose  
 Dr. & Mrs. Stanley Samuels  
 Mark Seifert  
 Muriel Smith  
 Dr. & Mrs. William Soltz  
 Nancy Stratton  
 Dr. James Thomas  
 Mr. & Mrs. Michael Thompson  
 Barbara Tudor  
 Mr. & Mrs. Dominic Tudor  
 Mr. & Mrs. Arthur Varden  
 Mrs. George Webster  
 Mr. & Mrs. Harold Young, Jr.

### **PLAYERS OF THE PEAR GARDEN**

Members of Players of the Pear Garden Friends Group merit special recognition for their support through season subscription scholarship donations that enrich the university's theatre arts programs.

### **BENEFACTORS**

Danny Bilson '78  
 Harry B. Blackstone, Jr.  
 Paul DeMeo '78  
 Neal, Helen & Carol Hanzlik  
 Dr. W. Benson & Mrs. Pamela Harer  
 Linda Stockham '75  
 Mr. & Mrs. James Williams

### **SPONSORS**

Mr. & Mrs. Caywood J. Borror  
 Dr. James D. & Mrs. Anne Crum '76  
 Mr. & Mrs. Charles Donovan  
 Dr. & Mrs. Anthony H. Evans  
 Dr. & Mrs. Louis Fernandez  
 Dr. Catherine Gannon  
 Drs. Ernest & Dorothy Garcia  
 Dr. & Mrs. Patrick Garcia  
 Dr. & Mrs. Hollis Hartley  
 Dr. & Mrs. Dennis Hefner  
 Mr. & Mrs. David Kennedy  
 Harry R. Lambert  
 Mr. & Mrs. William E. Leonard  
 Dr. & Mrs. Fook F. Liu  
 Mr. & Mrs. Art McKinster  
 Dr. & Mrs. Art Moorefield  
 Mitchell K. Slagerman '84  
 Mr. & Mrs. G. Slater  
 Mr. Bobby & Mrs. Mary Kay Vincent '80  
 Mr. & Mrs. Paul Anderson Wilson  
 Dr. & Mrs. Donald C. Woods

### **PATRONS**

Alan's Travel Service  
 Brills Shoes  
 Marjorie Callaghan  
 Dr. Juan C. Gonzalez & Ms. Irene Hoffman  
 Mr. & Mrs. Randy Harrell  
 Mr. William & Dr. Sherry Howie  
 Dr. C. Frederick Kellers  
 Dr. & Mrs. Brij B. Khare  
 Dr. Ellen Kronowitz  
 G. Alan McAllister '81  
 Dr. Craig Henderson & Barry Morgan  
 Mr. & Mrs. William A. Newman  
 Dr. & Mrs. James R. Savage  
 Mr. & Mrs. Sam Sill  
 Dr. Richard Switzer  
 Dr. Daniel S. Whitaker



Our sincere thanks and deepest gratitude go to the following friends, alumni, parents, faculty, staff, students, and business and community leaders who shared their time, talents and ideas so freely throughout the past year. Their exemplary commitment and active participation in the life of the university continue to make profound differences within our campus community.

### **ALUMNI ASSOCIATION BOARD OF DIRECTORS**

Christopher Ahearn '90  
 David Amori '76  
 Dr. Mary Andis  
 Donald Beard '67  
 Lawrence Buck '83  
 William Christelman '69  
 Mary Colacurcio  
 Frank Colby '72  
 James Kennedy '77  
 Marcia Lentz '80  
 Paul Mata '87  
 Terry May '86  
 Ken Miller '86  
 Henry Ortiz '84  
 Cheryl Marie Osborne '93  
 James Penman '69  
 Dr. Judith Rymer

### **COACHELLA VALLEY CENTER ADVISORY BOARD**

Paul Ames  
 The Ames Group  
 Rolfe G. Arnhyrn  
 Palm Springs Chamber of Commerce  
 Dr. Dolores A. Ballesteros  
 Desert Sands Unified School District  
 Steve Brummel  
 Verde-Mar Limited  
 Chuck Cervello  
 GTE  
 Richard A. Daniels  
 Mine Reclamation Corp.  
 Ralph Hitchcock  
 Southern California Edison Co.  
 Mark Homme  
 Attorney-at-Law

Sabby Jonathon  
Jonathon & Associates,  
Inc.  
F. T. Kieley III  
Curtis-Kieley General  
Insurance  
Manuel Sanchez  
JMS Engineering  
Dave Tschopp  
First Bank of Palm  
Desert  
Betty Williams  
Williams Development  
Corp.

**CSUSB ATHLETIC  
ASSOCIATION  
EXECUTIVE  
COMMITTEE**

Max Alonso  
Los Padrinos  
Fermin Arteche  
Gerald Brown  
Lawrence L. Daniels '76  
Daniels Resource  
Group  
David DeMauro '87  
CSUSB  
David Faust  
Pacific Rim Assurance  
Co.  
Karen Gilyard  
Atkinson, Andelson,  
Loya, Rudd &  
Romo  
Jim Green  
California Institute for  
Men  
Steve Henthorn  
San Bernardino Hilton  
Gill and Jane Snyder  
Dr. David Stine  
CSUSB  
Jeffrey J. Sykes  
Uniglobe Crown  
Travel  
John Wood '83  
Beaumont Unified  
School District

**LIBRARY  
ASSOCIATES  
EXECUTIVE  
COMMITTEE**

Betty Anderson  
Dr. Frances Coles  
Dr. Susan Cooper  
Penny Holcomb  
Thelma Press  
Harry Rheubottom  
Walter Schuiling  
James Urata  
Ralph Velasquez  
Dave Wood

**PFAU LIBRARY  
ADDITION  
SUPPORTERS (PALS)**  
Dr. William Aguilar  
Dr. Annette Annechild '90

Dr. Ernest Garcia  
Penny Holcomb  
Dr. Julius Kaplan  
Wilfrid Lemann, Chair  
Marta Macias-Brown '70  
Thelma Press

**SCHOOL OF  
BUSINESS & PUBLIC  
ADMINISTRATION  
BOARD OF  
COUNCILLORS**

Stephen D. Albright  
Inland Empire  
Economic  
Partnership  
Sally Anderson  
Ernst & Young  
William J. Anthony  
Inland Empire Business  
Journal  
Leona Aronoff  
Gate City Beverage  
Distributors  
Don Baker  
Stater Bros. Markets  
Pam Ball  
Digital Equipment  
Corporation  
Judith Battey  
The Gas Company  
Glenda Bayless  
Bayless Accountancy  
Corp.  
Howard Bland  
KPMG Peat Marwick  
Jack Brown  
Stater Bros. Markets  
Joanna R. Bruno  
Foothill Independent  
Bank  
Larry Buck '83  
CSUSB Alumni  
Association  
Sam Catalano  
Central City Company  
Gary L. Christenson  
Soren McAdam Bartells  
Bill Courtney  
Inland Business  
Magazine

Nicholas J. Coussoulis '75  
Coussoulis Develop-  
ment Company  
Clifford Cummings  
Chuck Obershaw  
Toyota  
Roberta A. Davis  
Johnson & Higgins of  
California  
Don Driftmier  
Vavrinek Trine Day &  
Co.  
Mark C. Edwards  
Reid & Hellyer  
Kenneth M. Foshee  
GTE California  
Robert A. Fredericks  
Fredericks Benefits

C. Charlie Gardner  
C & R Computer  
Software Associates,  
Inc.  
Michael Gardner  
Southern California  
Edison  
David Garthwaite, Jr.  
SUNAIR Aluminum  
Corporation  
Terry Gray  
Union Bank  
Diana Harris  
Riverside Community  
College  
Sam Henley  
San Bernardino Valley  
Association of  
Realtors  
Jim Hlawek  
County of San  
Bernardino  
Charles J. Inacker  
Riverside Community  
College  
Ed Jacobsen  
Ed Jacobsen Realtor  
Doris Jaynes  
Life Savings Bank  
Rod LeMond  
McGladrey & Pullen  
Linda Lingo '82  
Specialty Minerals, Inc.  
Jeremiah Lloyd  
Bank of America  
Wes McDaniel  
San Bernardino  
Associated  
Governments  
James Miles  
Contel of California  
Gerald M. Newcombe '76,  
'82  
Dean Norling  
Swenson Accountancy  
Corp.  
Chuck Obershaw  
Chuck Obershaw's  
Toyota of San  
Bernardino  
Tom Pilkington  
Entre Computer  
Center  
Steve PonTell  
Inland Empire  
Economic Council  
John F. Prentice  
Eadie and Payne  
Edward Ridder  
TRW Ballistic Missiles  
Division  
Al Schwartz  
Chicago Title  
Charles Seward  
Inland Business Media  
Group, Inc.  
Barbara H. Sheldon  
City of Riverside  
Cynthia Siddons  
First Interstate Bank of  
California

Ed Slaughter  
Southern Cal Capital  
Clark N. Snyder  
Nordskog Industries,  
Inc.  
John Steinbeck  
Allen Haight &  
Schurawel  
Timothy Steinhaus '75  
City of San Bernardino  
Economic Develop-  
ment Agency  
Robert Temple  
San Bernardino  
Community  
College  
Sid Ward  
Computer  
Communications  
International  
Eugene Wood  
E. H. Wood &  
Associates  
Jim Wright  
Hayden, Inc.

**SCHOOL OF  
NATURAL SCIENCES  
BOARD OF  
COUNCILLORS**

Dr. Boyd Bauer  
Hospital Council of  
Southern California  
Richard Best  
Lockheed Aircraft  
Service Company  
Dr. Louis Fernandez  
CSUSB  
Dr. Patrick Garcia  
Howard Grossman  
Lawrence Hinkle  
TRW Ballistic Missiles  
Linda Marquez '70  
Ameron  
Shirley O'Connor '74  
Annie Ramos  
San Bernardino Parks  
& Recreation  
Gary Rasmussen  
Rasmussen and  
Associates  
Dr. James Savage  
Dr. Paul Whiteside '76  
Beaver Medical Clinic

**SCHOOL OF SOCIAL &  
BEHAVIORAL SCIENCES  
ALUMNI ADVISORY  
BOARD**

Ruth Bandzak '84  
University of Redlands  
Jon Boeche '87  
Dairy Queen  
Robert Cupp '86  
University of  
California,  
Riverside  
Robert Davis '89  
Thomas, Luebs &  
Mort

Robin Ellins '81  
Riverside County  
Lou Fazzi '74  
Cheryl Flowers '77  
San Bernardino  
Municipal Water  
Dept.  
Lynn Hirtz '70  
Dan's Lawnmower  
Center  
Freda Kelly '91  
Antelope Valley  
College  
Lee Kinney '85  
Wesley Krause '90  
San Bernardino County  
Probation Dept.  
Robin Laska '90  
Thomas Laurin '75  
San Bernardino County  
Maverick Mitchell '91  
Riverside County  
Dept. of Public  
Assistance  
Leah Rentz-Hemphill '82  
Riverside County  
Dept. of Mental  
Health  
Marvin T. Sawyer  
Attorney-at-Law  
Nancy Whitney

**TRUSTEES FOR THE  
FOUNDATION FOR  
CALIFORNIA STATE  
UNIVERSITY, SAN  
BERNARDINO**

Glenda Bayless  
Bayless Accountancy  
Corp.  
Lawrence Daniels '76  
Daniels Resource  
Group  
Ken Foshee  
GTE California  
Robert V. Fullerton  
Fullerton, Lemann,  
Schaefer &  
Dominick  
Wilfred Heitritter  
McGladrey & Pullen  
Sheri Major '93  
CSUSB Associated  
Students  
Denny Shorett  
Crown Printers  
Ronald G. Skipper  
Attorney-at-Law  
William Tiger  
Robinson & Cooper  
Insurance

**UNIVERSITY  
ADVISORY BOARD**  
Marion Black, Jr.  
The Vernon Company  
Nicholas Coussoulis '75  
Coussoulis Develop-  
ment Company

Karen Craig '70  
San Bernardino High  
School  
Richard F. Crail  
Lockheed Commercial  
Aircraft Center  
Mary Drury  
Sunrise Company  
Edward Dunagan  
Dunagan Construction  
Don Ecker  
Ernst & Young  
Dr. Luis S. Gomez '71  
Crafton Hills College

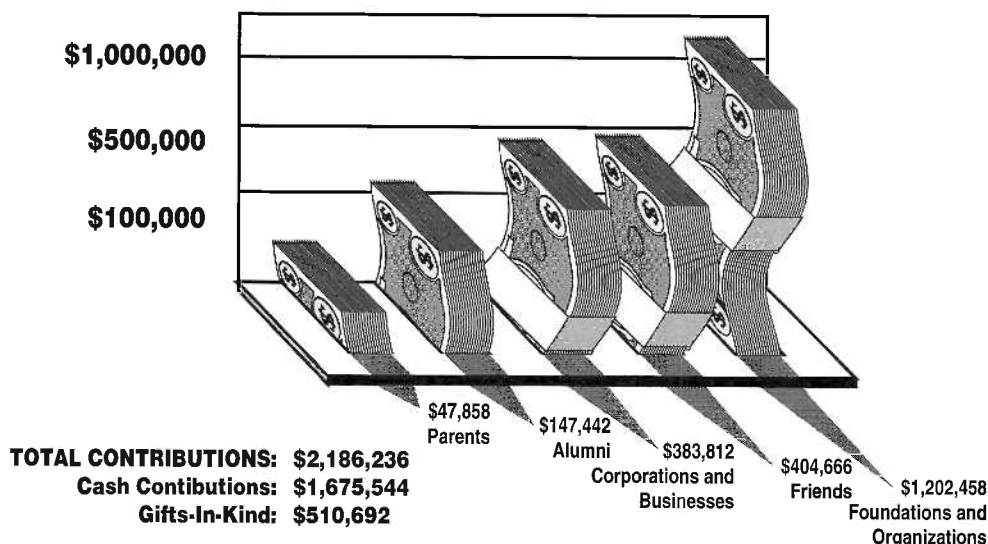
Edward G. Hill, Jr.  
Hill and Associates  
Don Iman, D.D.S.  
Darlene Johnson '81  
The Jordan Company  
Milton Johnson  
Home Lumber  
Company  
Dr. Taewoong Kim  
St. Mary of the Desert  
Hospital  
James Mulkey  
Specialty Minerals Inc.  
Gerald Newcombe '76

Richard Oliphant  
Richard R. Oliphant &  
Associates  
Kenneth N. Patterson  
Eadie & Payne  
Robert W. Percy, D.D.S.  
James Robinson  
Riverside National  
Bank  
Valerie Romero  
Elise Traynum '83  
Best, Best and Krieger  
Bruce Varner  
Gresham, Varner, Savage,  
Nolan & Tilden

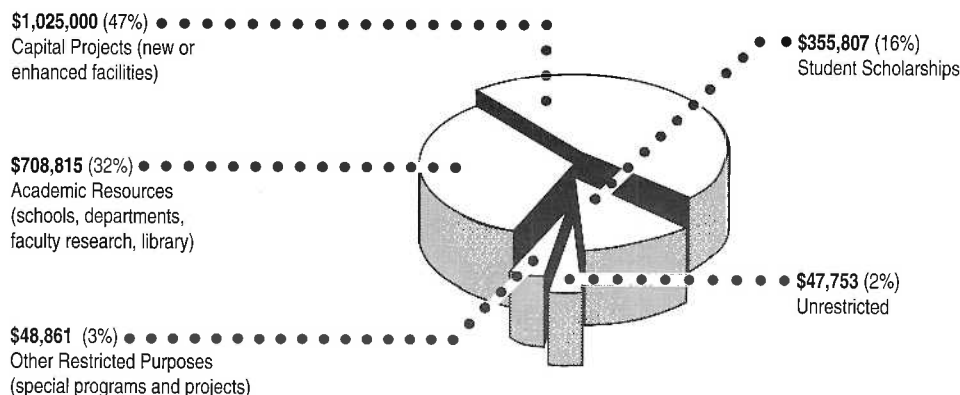
Lawrence J. Winking '71  
Attorney-at-Law  
**VOLUNTEERS FOR  
SPECIAL PROGRAMS**  
Christopher Ahearn '90  
David Amori '76  
Dr. Mary Andis  
Don Beard '67  
Mary Frances  
Breitenstein '84  
Larry Buck '83  
Bill Christelman '69  
Carol R. Dey '83

Cheryl Flowers '77  
Charles Horinouchi '81  
John Jamerson '87  
Kenny Jernigan  
Jamie Jorgenson '91  
Jim Kennedy '77  
Maria Lentz '80  
Paul Mata '87  
Terry May '86  
Leda Medearis '91  
Susan & Ken Miller '86  
Joyce Payne '67

## WHO GAVE HOW MUCH, 1992-93



## HOW 1992-93 GIFT DOLLARS WERE DESIGNATED



California State University, San Bernardino is proud of the interest and support of each individual and organization whose name appears in this Honor Roll of Donors. Every effort has been made to properly acknowledge all gifts made to the university in 1992-93, but in a listing of this size inadvertent oversights may have occurred. If we have failed to recognize anyone, we apologize and ask you to please notify the office of development so that we may correct our records. Any corrections to the Honor Roll will appear in the winter issue of Cal State, San Bernardino.

**Office of Development**  
**California State University, San Bernardino**  
**5500 University Parkway**  
**San Bernardino, CA 92407-2397**  
**(909) 880-5006**  
**Fax (909) 880-5903**

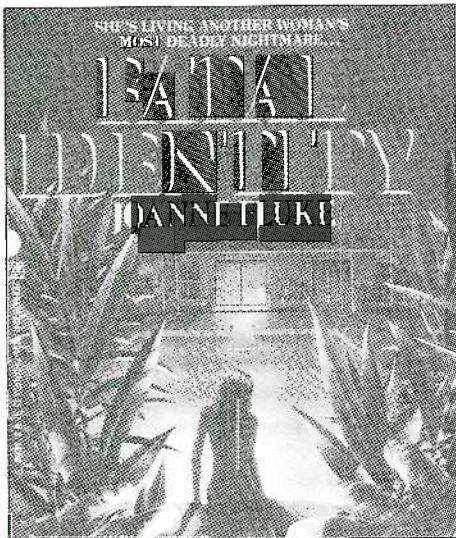


## 1969

▲ **Barbara A. Bolanos**, B.A. sociology, is the division chair of social sciences and human services at College of the Desert, Palm Desert, CA. She also serves as the president of the Academic Senate, and was appointed by the Governor to the Challenge 21 Taskforce on Management. She is also the president of the Desert Council of World Affairs.

## 1973

▲ She's done it again! Alumna author, **Joanne Fluke**, B.A. psychology, will see the publication of her 11th mystery novel, *Fatal Identity*, to be published by Zebra Books in Sept., 1993.



"Two different women—one fatally beautiful face. They were two halves of the same whole, sisters who were different in every way but one; they shared the same flawlessly exquisite features. But now gorgeous movie star Mercedes Calder is dead . . . and her identical twin is about to embark on a cunning deception that will put her desperately at risk." Fluke, using the pseudonym Jo Gibson, also is entering into the "teenage horror genre"—her first novel is entitled, *The Dead Girl*, published in paperback by Zebra Books and expected in the bookstores on November 1.

The Honorable **Jean Pfeiffer Leonard**, B.A. history, was appointed in December 1992 by Governor Wilson as a Municipal Court Judge in Riverside. She is the second female in county



Jean Pfeiffer Leonard

history to hold such a position. Leonard practiced family and juvenile law from 1977 to 1992; her law degree is from LaVerne College of Law.

**Debbie (Virochpoka) Toomey**, B.A. sociology, is working in the Purchasing Dept. for the city of San Bernardino.

## 1974

**Benita Roberts**, M.A. education, the new superintendent of the Jurupa Unified School District, is the second African-American to be appointed a school district superintendent in Riverside County. Prior to this appointment Roberts had been the assistant superintendent for educational services and has been in the teaching profession for 25 years.

**Dr. Robert Rose**, M.A. education, middle school teacher at Del Vallejo in San Bernardino, was featured in an article in the San Bernardino Sun entitled, "Class Projects, A Fresh Look at Learning." Rose "takes the students most likely to drop out and makes them the most likely to enjoy learning." He is the author of a book, *Creating Your Giant Self*, that he uses in his discussions and assignments.

## 1975

**Herbert E. Miller**, B.A. administration, M.B.A. '77, retired from Morton International in Colton, CA, to accept the position of general manager of a joint-venture paint manufacturing company in Jinan, the People's Republic of China. He writes, "I would be delighted to introduce any CSUSB alumni or friends to opportunities in this area. Even if no

such interest exists, I would enjoy hearing from (or receiving visits from) alumni, faculty, or students in business administration." Call the Alumni Office, (909) 880-5008, for information.

## 1976

**Frank Basirico**, B.A. administration, is the vice president of the credit management division for the Chino Valley Bank in Chino, CA.

## 1977

**Connie Lightbody**, M.A. education, is the principal of Coronita Elementary School in Corona, CA. She is also the president of the Corona-Norco branch of the American Association of University Women.

**Gladys Walker**, M.A. counselor education, is the new principal at Ramona High School, a predominately White campus in the heart of suburban Riverside, making her the first Black female to hold such a post in the Riverside Unified School District's 100-plus-year history.

## 1979

Missing person alert: Anyone giving us accurate address or phone information on **Alan Breslow**, M.B.A., will receive a reward from the Alumni Association. He won the Distinguished Alumni Award in 1981 and we need to contact him because a plaque will be placed on campus listing all recipients. Call (909) 880-5008 if you know of his whereabouts.

▲ **Gwendolyn Potter**, B.S. nursing, is the administrator and owner of Careline Health Services Corp. in Riverside. Careline has three offices (Riverside, Victorville, and Hemet) and 85 employees who made approximately 45,000 home visits in 1992.

**Bernice Stansbury**, B.A. social science, was honored by the San Bernardino Unified School District Board of Education as one of the winners of the Exemplary Employee Award for 1992-93. Stansbury teaches social studies at Serrano Middle School.

## 1980

**Joe Desist**, B.A. political science, M.A. education '83, an elementary school teacher in Fontana, is president of the California Advocacy League, a nonprofit league that advocates "buy California." The league states that "if Inland Empire



consumers spent just five percent more of their expendable income (about \$20 billion) on California goods, the state could turn the corner on recession."

**Marilyn Willett Heavilin**, B.A. liberal studies, is the author of four books: *Becoming A Woman of Honor*, *When Your Dreams Die*, *December's Song*, and *Roses in December*. All four books can be found in the Alumni Authors collection in Cal State's Pfau Library. She is married to **Glen Heavilin** (M.S. administration '84).

▲ **Dr. Joe Muga**, B.A. psychology, is a licensed clinical psychologist at the Palo Alto Veterans Affairs Medical Center. He is also a member of the Panel of Psychologists and Psychiatrists for the Superior Courts of San Mateo and Alameda counties.

## 1981

**Carol Jones Wright**, B.A. liberal studies, is an English tutor at San Bernardino Valley College, and has been a visiting teacher for the county. For 15 years she worked as a psychiatric technician with the developmentally disabled. She writes, "after returning from a 1991 visit to Australia, I found some of my students reminded me of Tasmanian Devils!"

## 1982

**Gary P. DuBois**, B.A. administration, is studying environmental law at Washington University School of Law in St. Louis, MO. He is a minority recruiter for American Indians who wish to attend Washington University's George Warren Brown School of Social Work. They offer four scholarships (full tuition, book allowance and a living stipend) for American Indians. Contact the Alumni Affairs Office, (909) 880-5008, for DuBois' address.

**Roberto Suarez**, B.A. social science, M.S. counselor education '83, MFCC, is the outpatient services clinical supervisor for San Ysidro Mental Health Center. He specializes in working with adolescents and their families.

## 1985

**Ann Pultz Kramer**, B.S., M.S. psychology '87, is a licensed MFCC in full-time practice in Moreno Valley. Her husband, **Larry Kramer**, is the former chapter advisor of the CSUSB chapter of Sigma Chi.

## 1986



Theresa L. George

▲ **Theresa L. George**, B.A. criminal justice, was chosen Radio Dispatcher/Communications Technician of the Year by the Eaton, OH, post of the Highway Patrol where she has been employed since 1989.

▲ **Janey Olvera**, B.S. psychology, is the co-owner and Chief Executive Officer of INTRAC Track Inspection & Consultation in Redlands, and co-owner and vice president of JL & Associates International Marketing. She was featured in the 1991-92 publication of 2000 Notable American Women.

## 1987

**Tanya Young-Womack**, multiple subject credential, education, writes that she "is currently completing her master's thesis in Latin American and Iberian Studies at UC Santa Barbara and has begun coursework toward her doctorate in history. My husband, **Bruce** (M.S. biology '91) teaches high school science at A.B. Miller High School in Fontana, as well as teaching biology at Palomar Community College in Escondido. He spends his weekends with us (Tanya, T.J., and Jessica) here in Santa Barbara."

## 1988

▲ **Victoria Bustamante**, B.A. criminal justice, has been employed by the San Bernardino Police Dept. for four years and has received an intermediate certificate from the state of California.

**Tullus E. Miller**, B.A. administration, is now a manager in Grant Thornton Accountants and Management Consultants on Wilshire Blvd. in Los Angeles.

**Timothy Tyler**, B.A. administration, received his doctor of pharmacy from USC in May. He was the recipient of the prestigious American Society of Hospital Pharmacists Student Leadership Award. A founding member of CSUSB's Sigma Chi fraternity, Tyler has remained active with the organization and its area alumni chapter. He will continue his clinical pharmacy residency at Desert Hospital in Palm Springs.

## 1989

**Jane Cole**, B.A. communication, is now working for CNN International in Atlanta, GA.

**Brenda McCahan**, B.S. administration, received her license as a CPA and is the tax department supervisor at Vavrinek, Trine, Day & Co. She lives in Ontario.

**Kerry (Cooke) Paperman**, B.A. administration, works at Latham G.M. Center in Barstow.

**Jennifer Westendorf Powell**, B.S. physical education, is working on a special education endorsement and teaches elementary life skills children. She and her husband, **Jeff**, live in Tacoma, WA.

▲ **Kelli (Powell) Smith**, B.S. administration, is a C.P.A. for Price Waterhouse in Riverside, while her husband, **Randy** (B.A. administration), is a senior financial analyst for Provident Savings Bank there.

## 1990

**Gene F. Chaney**, B.A. administration, was "last seen surfing the waves of Newport Beach." His wife, **Robin** (M.A. education '88), was "rumored to be sitting on Gene's shoulders as he surfed." It is also rumored that they live in Chino Hills and would like to see more humor in these "somber" Alumni Notes.

**Carla DePrisco**, B.A. liberal studies, has been elected president of the Victor Valley Business and Professional Women's Club. She is an assistant manager at the Lahontan Water Quality Board and is also an award-winning photographer and the owner of Cheesecake Photos.

The Making of Jurassic Park is now in bookstores. Written by **Jody Duncan** (B.A. theatre arts) and **Don Shay**, who are *Cinefex* special effects magazine editors, the book chronicles the film's unprecedented techniques.

Coast Guard Ensign **Champ V. Hartwell**, B.A. administration, recently was awarded the Coast Guard Human-



tarian Service Medal while serving aboard the U.S. Coast Guard Cutter Jarvis. She received the award for extraordinary service for "selfless acts of humanitarian assistance far beyond the call of duty."

**Maureen Gallois-Mills**, B.A. liberal studies, is an elementary teacher at Green Tree East School in Victorville.

**Ken Akira Payne**, B.S. computer science, is a computer specialist for Mitsubishi FabMet in Garden Grove.

**Barbara O. Young**, B.S. administration, is now a C.P.A. practicing in Albuquerque, NM.

## 1991

A social science teacher at Valley View High School in Moreno Valley, **Manuel J. Barba**, B.A. social science, credential '92, focuses on teaching critical thinking skills using social science content as the vehicle.

▲ **Nancy Barnicoat**, B.A. administration, has joined the office properties division of Grubb & Ellis Commercial Real Estate Services in Riverside.

**Bruce M. Cooley, Jr.**, B.A. history, is a stockbroker/investment banker at Dickinson & Co. in LaJolla, CA.

**Margaret Easley**, B.S. nursing, has gone back to school. She's at USC working for her master's degree in nursing, with emphasis on family nurse practitioner (FNP) work, and still works at St. Bernardine Medical Center in nursing administration.

▲ **Gail Anne Flathers**, B.A. psychology/liberal studies, a 4th/5th grade bilingual/transitional teacher at Lankershim Elementary School, Highland, writes "Thank you, Cal State, for providing me with a strong educational background and for preparing me for my profession."

**Jon Glasscock**, B.A. administration, is a substitute teacher for San Bernardino City schools.

**Diane Hartman**, B.A. psychology/human development, is an educational coordinator with the East Valley CHARLEE (Children Have All Rights: Legal, Educational, Emotional), a member of the Menninger Foundation. She counsels children and adolescents in the Yucaipa School District.

**Debra Nelson-Adair**, B.S. nursing, has accepted a position as a public health nurse with the Riverside County Health Services Agency. She will be working as a field nurse out of the Indio Health Center.

**Troy Tanner**, B.S. physics, was awarded a graduate research scholar assistantship in aeronautics at George Washington University/NASA Langley Research Center.

## 1992

**Craig J. Burdette**, B.A. administration, is a financial analyst for the First Trust Bank in Rancho Cucamonga.

"When I am responsible, I will have a good day. When I am irresponsible, I will pay the consequences." That is the sign the sixth grade students of Hillside Elementary School see each day when they enter the classroom of **Art Gallardo**, M.A. education. Gallardo was described as a "super teacher" in a recent publication of the San Bernardino City Unified School District.

**Brenda (Lehman) Glasscock**, B.A. sociology, is a sales representative for Canon-Astro Office Products in San Bernardino.

**Renee Marie Groese**, B.A. communication, is working at the Redlands Daily Facts newspaper as a news clerk and writer.

▲ **Karen Ledestich**, B.A. math, is the single mom of three children and is finishing her secondary teaching credential.

▲ **Michelle Lindholm**, B.A. psychology, is planning to continue her education in a Michigan Ph.D. program in clinical psychology. She enjoys volunteer work in her community.

▲ **Falk Mueller-Veerse**, M.B.A., writes, "Thanks to my M.B.A. from CSUSB, I could get a very good job in international marketing and sales. I have sales responsibility for wastewater pumps to Germany and worldwide marketing responsibility for a revolutionary remote control system for improved environmental protection." He is the project manager for Sarlin Pumps in Helsinki, Finland.

▲ **Maria Santos**, B.A. paralegal studies, case manager for Desert AIDS project in Palm Springs, works primarily with Hispanic clients in providing services that include Durable Powers of Attorney and simple wills.

**Michael Steinman**, B.A. administration, is the district sales manager for Republic Builders Products in McKenzie, TN. His territory covers California, Colorado, and Hawaii.

## 1993

▲ **Levent Arabaci**, M.B.A., writes, "I have a bachelor's degree in finance and an M.B.A. in general management from Turkey. But none of these degrees helped me to improve my presentation skills and knowledge as much as CSUSB did. Therefore, I would like to thank all of my instructors at Cal State for providing me a high-quality education."

## BIRTHS

**Ivan Glasco**, B.A. theatre arts '81, and **Donna Rice Glasco**, B.A. sociology '79, became the parents of **Bryana Noelle** on October 19, 1992.

**Morgan Christopher Heaslet** was born on New Year's Eve, 1992, to **Deanna Cordell Heaslet**, B.A. sociology '90, and **Timothy J. Heaslet II**.

Congratulations also go to **Ted Scott Miller**, M.B.A. '87, and **Kathryn Miller**, formerly employed in Admissions and Records at CSUSB, on the birth of their daughter, **Patricia Marjorie**, born March 11, 1993.

▲ **Felicia Stocks**, B.A. English '89, and her husband, **Michael Heck**, are the proud parents of **Sean Thomas Heck**, born Nov. 29, 1992.

## MARRIAGES

**Craig J. Burdette**, B.A. administration '92, married **Marci R. Smith**, CSUSB student, on March 27, 1993 in Highland.

**Kerry Patricia Cooke**, B.A. administration '89, married **Andres E. Paperman** on June 5, 1993 in Victorville.

**Amy Fonken**, B.A. communication '92, married **Thomas Hallback** on May 15, 1993 in Upland.

**Kimberly L. Hooper**, B.A. liberal studies '91, and **Bruce Koyle**, a CSUSB student, were married in Los Angeles on Feb. 27, 1993.

**Brenda Joyce Lehman**, B.A. sociology '92, and **Jon Bradley Glasscock**, B.A. administration '91, were married on April 24, 1993 in San Bernardino.

**Ken Akira Payne**, B.S. computer science '90, married **Geneanne Marie Hendry** on Feb. 13, 1993 in Las Vegas.

▲ **Kelli Lynn Powell**, B.S. administration '89, and **Randy Curtis Smith**, B.S. administration '89, were married in Redlands on Feb. 13, 1993.


**LaVerne Ann Pultz**, B.S. '85, M.S. psychology '87, married **Larry Kramer** on July 12, 1992.



Debbie Virochpoka, B.A. sociology '73, wed John Toomey in Calimesa on May 1, 1993.

#### IN MEMORIAM

Herbert Barsch, B.A. liberal studies '86, M.A. education '90, died Oct. 17, 1991. Arline Barsch, in notifying the university of his death, wrote the following: "He was extremely proud of his degree and I was, too."

*Gifts "In Memory of" deceased alumni or faculty, or "In Honor of" living alumni or faculty, may be made to the CSUSB Foundation, 5500 University Pkwy., San Bernardino, CA 92407-2397.* 

### TELL-US

MORE ABOUT YOURSELF

Name \_\_\_\_\_

Address \_\_\_\_\_

City \_\_\_\_\_

State \_\_\_\_\_ Zip \_\_\_\_\_

Home Phone (\_\_\_\_\_) \_\_\_\_\_

Bus. Phone (\_\_\_\_\_) \_\_\_\_\_

Soc. Sec. No. \_\_\_\_\_

Year of Graduation \_\_\_\_\_ Degree \_\_\_\_\_

Fraternity/Sorority \_\_\_\_\_

Major \_\_\_\_\_

Spouse \_\_\_\_\_

Is Spouse a CSUSB Grad? ☐ Yes ☐ No

If yes: Year of Graduation \_\_\_\_\_

Degree \_\_\_\_\_ Major \_\_\_\_\_

Information that you would like to share in *Cal State* magazine. (Write here or attach additional page.)

(Note: Birth and wedding announcements require dates and names of all concerned for a separate listing.)

\_\_\_\_\_  
\_\_\_\_\_  
\_\_\_\_\_  
\_\_\_\_\_  
\_\_\_\_\_  
\_\_\_\_\_

Mail to: Cal State Magazine Editor,  
CSUSB, 5500 University Parkway  
San Bernardino, CA 92407-2397

FINANCIAL OPPORTUNITIES...

# JOIN

SAN BERNARDINO COUNTY  
CENTRAL CREDIT UNION

It's not often a new financial opportunity comes your way.

For CSUSB Alumni, it's here.

You can join the San Bernardino County Central Credit Union and take advantage of a safe, secure financial institution.

As a financial cooperative, owned and operated by its members, we are unique in the financial world. So take advantage of a full range of products and services available for members only.

The choice is yours, join today.



(909) 881-3355  
(800) 743-7228





*From art to lectures to outdoor fun, Cal State, San Bernardino offers a variety of activities for the entire family. Keep this quarterly calendar handy. Share and enjoy. You are encouraged to call ahead and confirm an event using the phone number listed after each description. All numbers are in the 909 area code.*

## SEPTEMBER 26

**Campus Picnic.** An afternoon for community and campus to enjoy music by the Latin Society, volleyball and softball; for children to enjoy face painting, balloon sculptures and pinatas; and for all to enjoy good food. 2-6 p.m., athletic fields. 880-5234.

## OCTOBER 7-

## NOVEMBER 19

### Art Exhibit.

"Sisters: Two Point Perspective." Diana Garf Gardiner and Lafarne GarfHungerford display colorful, large-scale assemblage and 3-D installation work. Opening reception Oct. 7, 5-7 p.m., University Art Gallery. Gallery hours: 9 a.m.-4 p.m., Mon.-Fri. Wheelchair accessible. Free. 880-5802.

## OCTOBER 27

### Music.

CSUSB Symphonic Band and Riverside Community College Concert Band with Luis S. Gonzalez (CSUSB) and Roger Rickson (RCC), directors. 8:15 p.m., Creative Arts Building Recital Hall. General admission, \$5; students and senior citizens, \$3. 880-5859.

## OCTOBER 30

### Conference.

CSU Women's Council will hear speech from Paula Kamen, research associate at Northwestern University, regarding young women's attitudes on feminism and sexuality. She is the author of *Feminist Fatale*. 9 a.m. to 6:30 p.m., Lower Commons. Free. 880-5839.

## NOVEMBER 2

### Talk.

"Under Stone Age Skies," by Dr. Ed Krupp, director of the Los Angeles Griffith Observatory. Illustrated by slides, Krupp's talk will focus on ancient society's knowledge of astronomy. 7 p.m., Creative Arts Building Recital Hall. Free. 880-5502.

## NOVEMBER 6

### Music.

University of California at Santa Barbara Middle East Ensemble. 8:15 p.m., Creative Arts Building Recital Hall. General admission, \$6; students and senior citizens, \$4. 880-5859.

## NOVEMBER 10

### Music.

Faculty artist recital featuring Loren Filbeck, baritone, and Larry McFatter, pianist. 8:15 p.m., Creative Arts Building Recital Hall. General admission, \$6; students and senior citizens, \$4. 880-5859.

## NOVEMBER 12

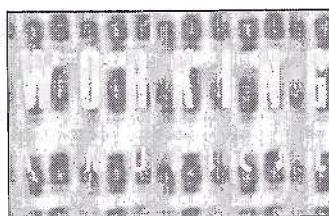
### Music.

CSUSB Wind Ensemble with Luis S. Gonzalez, director. 8:15 p.m., Creative Arts Building Recital Hall. General admission, \$5; students and senior citizens, \$3. 880-5859.

## NOVEMBER 12-14, 17-21

### Theatre.

"Working." A musical adaptation from the book by author Studs



Terkle. Curtain time for all evening shows is 8:15 p.m. Nov. 14 and 21 shows are 2 p.m., Sunday matinees. University Theatre in Creative Arts Building. General admission, \$8; senior citizens and CSUSB alumni with an Alumni Association membership card, \$5; students, \$3. 880-5876.

## NOVEMBER 19

### Music.

Faculty artist recital featuring Arthur Moorefield, clarinet; Edward Bostley, horn; and Larry McFatter, piano. 8:15 p.m., Creative Arts Building Recital Hall. General admission, \$6; students and senior citizens, \$4. 880-5859.

## NOVEMBER 23

### Music.



CSUSB Jazz Ensemble's Andy Cleaves

CSUSB Jazz Ensemble with Andy Cleaves, director. 8:15 p.m., Creative Arts Building Recital Hall. General admission, \$5; students and senior citizens, \$3. 880-5859.

## DECEMBER 1

### Music.

CSUSB Symphonic Band with Luis S. Gonzalez, director. 8:15 p.m., Creative Arts Building Recital Hall. General admission, \$5; students and senior citizens, \$3. 880-5859.

## DECEMBER 5

### Music.

CSUSB Concert Choir with Loren Filbeck, director. 8:15 p.m., Creative Arts Building Recital Hall. General admission, \$5; students and senior citizens, \$3. 880-5859.

## DECEMBER 12

### Music.

CSUSB Chamber Singers Holiday Concert. 8:15 p.m., Creative Arts Building Recital Hall. General admission, \$5; students and senior citizens, \$3. 880-5859.

# COYOTE FALL SPORTS CALENDAR

## SEPTEMBER

29

**Volleyball**  
Cal State, Bakersfield  
7:30 p.m.

## OCTOBER

2

**Men's Soccer**  
Cal State, Dominguez Hills  
1:00 p.m.  
**Women's Soccer**  
Cal State, Dominguez Hills  
3:00 p.m.  
**Volleyball**  
Azusa Pacific University  
7:30 p.m.

4

**Women's Soccer**  
Cal Baptist  
3:00 p.m.

9

**Women's Soccer**  
Azusa Pacific  
noon  
**Men's Soccer**  
Cal State, Los Angeles  
1:00 p.m.

12

**Volleyball**  
Cal State, Dominguez Hills  
7:30 p.m.

13

**Women's Soccer**  
Cal Poly, San Luis Obispo  
1:00 p.m.  
**Men's Soccer**  
Cal Poly, San Luis Obispo  
4:00 p.m.

15

**Volleyball**  
Cal State, Los Angeles  
7:30 p.m.

16

**Men's Soccer**  
Cal Poly, Pomona  
1:00 p.m.

**Women's Soccer**  
Cal Poly, Pomona  
3:30 p.m.

18

**Men's Soccer**  
Pomona Pitzer  
3:30 p.m.

19

**Volleyball**  
Chapman University  
7:30 p.m.

21

**Volleyball**  
Biola University  
7:30 p.m.

23

**Men's Soccer**  
Cal State, Bakersfield  
1:00 p.m.  
**Women's Soccer**  
Westmont College  
3:00 p.m.

26

**Volleyball**  
Cal Poly, Pomona  
7:30 p.m.

## NOVEMBER

3

**Volleyball**  
U.C. Riverside  
7:30 p.m.

6

**Volleyball**  
Grand Canyon University  
7:30 p.m.

22

**Women's Basketball**  
San Francisco State  
3:30 P.M.

23

**Men's Basketball**  
U.S. International Stars (exhibition)  
7:30 P.M.

30

**Women's Basketball**  
Point Loma  
7:30 P.M.

## DECEMBER

1

**Men's Basketball**  
Occidental College  
7:30 P.M.

3

**Men's Basketball**  
BYU, Hawaii  
7:30 P.M.

4

**Women's Basketball**  
Pomona-Pitzer  
7:30 P.M.

17

**Men's Basketball**  
San Francisco State  
7:30 P.M.

20

**Women's Basketball**  
Chapman University  
7:30 p.m.

22

**Men's Basketball**  
Grand Canyon  
7:30 P.M.

30

**Men's Basketball**  
College of Notre Dame  
7:30 P.M.

## JANUARY

2-3

**Men's Basketball**  
CSUSB "Coyote Cage Classic"  
(Western NM Univ-Metro St,  
Cohilo, Hi) 7:30 P.M.

3

**Women's Basketball**  
Wayne State College (Neb.)  
7:30 p.m.

6

**Women's Basketball**  
Harding University (ARK.)  
7:30 P.M.

*All listings are home games (unless noted otherwise). For more information, call the CSUSB Athletics Dept. at (909) 880-5011.*

You save the university 35 cents every time you tell us of your new address. Thank you!

California State University,  
San Bernardino  
5500 University Parkway  
San Bernardino, CA 92407-2397

Address correction requested

Non-Profit  
Organization  
U.S. Postage

**PAID**

San Bernardino, CA  
Permit No. 1649