

California State University, San Bernardino

**CSUSB ScholarWorks**

---

CSUSB Magazine

Arthur E. Nelson University Archives

---

1992

## Cal State San Bernardino Magazine (Fall 1992-1993)

CSUSB

Follow this and additional works at: <https://scholarworks.lib.csusb.edu/alumni-mag>

---

### Recommended Citation

CSUSB, "Cal State San Bernardino Magazine (Fall 1992-1993)" (1992). *CSUSB Magazine*. 10.  
<https://scholarworks.lib.csusb.edu/alumni-mag/10>

This Book is brought to you for free and open access by the Arthur E. Nelson University Archives at CSUSB ScholarWorks. It has been accepted for inclusion in CSUSB Magazine by an authorized administrator of CSUSB ScholarWorks. For more information, please contact [scholarworks@csusb.edu](mailto:scholarworks@csusb.edu).

Fall 1992-93

# Cal State

**SAN BERNARDINO**

NEWS FOR ALUMNI AND FRIENDS OF THE UNIVERSITY



**PARTNERSHIP  
2000**

INAUGURAL  
PARTNERSHIP 2000  
PROGRESS REPORT  
EDITION



CALIFORNIA STATE UNIVERSITY  
SAN BERNARDINO



**You may be wondering about this "NEW" magazine you're receiving. Actually it's not new, but it is improved, we think. We hope you'll think so, too, once you've had some time to spend with the publication.**

**Cal State magazine replaces the Panorama, the tri-annual publication that has brought you news and features about alumni and faculty.**

# PANORAMA



Some research we conducted last spring with members of our magazine audience (alumni, donors, faculty and parents) helped us see how we could do a better job of informing you of the dynamic developments happening at this booming campus.

Among the changes you'll find inside are focuses on the news of the individual academic schools. Our graduates feel the most connected to their fields of interest and want to know how Cal State's schools are contributing to new knowledge through faculty research and professional activities.

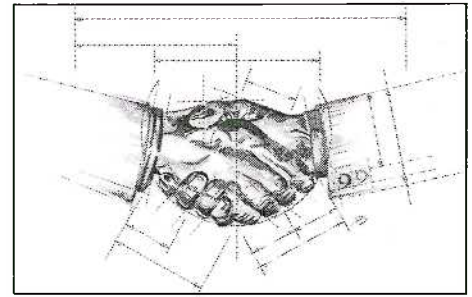
Your colleagues who took part in our research told us, too, that the magazine could do a better job of publicizing the growth and development on campus, with all the new construction that is underway. You should be able to catch up on these latest developments through the Cal State Update pages. Learn also about how individuals and corporations are helping to make this university the best it can be through financial contributions publicized in the Gift Rap department.

Some of our readers' favorite sections in the Panorama, such as the Alumni Notes and Coyote Sports pages, remain in Cal State magazine. Our endeavor is to bring you the news you want to know and make it easy to find. That's also the philosophy behind the change in the name of the magazine . . . there should no longer be any doubt about what this publication is about, who it's for and why you're receiving it.

But we don't break with tradition without a lot of thought and consultation. If you have a strong reaction to this new magazine, the editorial staff would like to hear from you. We invite you to send your comments to my attention.

**Cal State**  
SAN BERNARDINO

**Cynthia Pringle**  
Editor

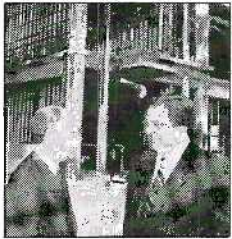


### Cover:

The character and quality of Cal State, San Bernardino in the 21st century are being shaped now by the Partnership 2000 fund raising effort.

Illustration by Jay Wampler.

# Contents



### Page 3

Jack H. Brown Hall Named for Stater Bros. CEO



### OBSERVATIONS . . . . . 2

Cal State No Longer Counts on Tax Dollars to Fully Fund Programs and Services



### CAL STATE UPDATE . . . . . 3

University Wins National Award for Partnership



### SCHOOL NEWS . . . . . 4

British Documentary Captures Cal State, Hillside Partnership (page 5)



### CALENDAR . . . . . 9

African Art Exhibit Heralds University's Expanding Cultural Collections



### COYOTE SPORTS . . . . . 10

Women's Basketball Forward Receives Spellacy Scholarship

### *Honor Roll of Donors . . . . . 11*

Our Annual Tribute to Thousands of Generous Supporters



### GIFT RAP . . . . . 24

James and Arianthi Coussoulis Arena Named for Parents of Alumnus



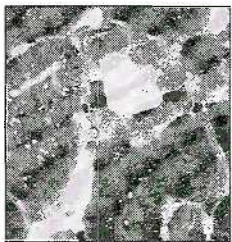
### ALUMNI PERISCOPE . . . . . 25

State Assemblyman Paul Woodruff Honored as Distinguished Alumnus



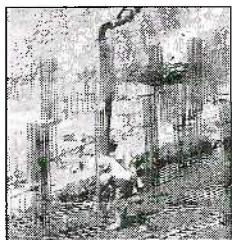
### ALUMNI NOTES . . . . . 27

'90 Grad Annette Annechild Appears on National Talk Shows



### Page 7

Electron Microscope Acquisition Advances Scientific Study



### Back Cover

Expansion of the Pfau Library Progresses



**PARTNERSHIP 2000: BUILDING ON THE CORNERSTONE OF KNOWLEDGE**

*"We make a living by what we get,  
we make a life by what we give."*

- WINSTON CHURCHILL

As I reflect on the past year and review the nearly 3500 names listed in this progress report, I am deeply gratified by the strong support provided to Cal State, San Bernardino by alumni, parents, faculty and staff, special friends and businesses throughout the region. With our annual Honor Roll of Donors, we are able to say thank you and to acknowledge your generous contributions publicly.

Encouraged by the growing support and mindful of the opportunities available for university-community partnerships, we have chosen this year to launch our first major fund raising campaign, Partnership.2000: Building on the Cornerstone of Knowledge.

In this era of constrained revenues and over-committed state budgets, Cal State, San Bernardino can no longer count on tax dollars to fund adequately its many necessary programs and services. Donated assistance from local business and industry, as well as individuals, is necessary to ensure continued quality instruction, meaningful student development and adequate facilities at the campus. Citizens of the region are counting on the university to play a leadership role in meeting the needs of a growing and increasingly diverse population. The university, in turn, is counting on partnerships with businesses and individuals to respond to those needs.

The university's most formative years are at hand: By the end of this decade, the campus's physical space for classes and community programs will almost double. The university's academic programs will heighten in sophistication with the addition of 16 degree programs, two-thirds of which will be at the graduate level. Nearly 20,000 students will be enrolled in the university at the dawn of the new century.

Your involvement now in the life of the university will make a noticeable difference in the character and quality of Cal State, San Bernardino in the 21st century. Opportunities abound, as never before, for you to influence the development of the university and its areas of distinction. The effectiveness of Cal State's ability to contribute toward the quality of life in the Inland Valley depends upon your investment and commitment today.

Whether your devotion is to the arts or sciences, the education of future leaders, business people or teachers, or to the development of research that builds upon the cornerstone of knowledge, your charitable desires may find a home here at the university.

In remarks to the volunteer leaders gathered for the Partnership 2000 kick-off in May, Jim Kennedy, president of the Cal State, San Bernardino Alumni Association, called on all of us to work together to make Cal State an even better university than it is today. He expressed his conviction that, "Cal State can upgrade and uplift this region like no other institution can." I share Jim's belief in what Cal State can do, especially in partnership with all of you.

These are exciting times, indeed. I invite you to help us dream the dreams of the 21st century and continue your support for Cal State, San Bernardino as we move forward with Partnership 2000: Building on the Cornerstone of Knowledge.

Anthony H. Evans  
President



**CAL STATE SAN BERNARDINO**  
MAGAZINE IS PUBLISHED BY THE  
OFFICE OF UNIVERSITY RELATIONS AT  
**CALIFORNIA STATE UNIVERSITY, SAN**  
**BERNARDINO FOR ALUMNI, FRIENDS,**  
**PARENTS AND COLLEAGUES. IT IS**  
**PRODUCED TRIANNUALLY AT THE**  
**BEGINNING OF EACH ACADEMIC**  
**QUARTER IN SEPTEMBER, JANUARY**  
**AND APRIL. THIS PUBLICATION IS**  
**PARTIALLY FUNDED WITH NON-STATE**  
**RESOURCES, INCLUDING A GRANT**  
**FROM THE CAL STATE ALUMNI**  
**ASSOCIATION. OPINIONS EXPRESSED**  
**IN CAL STATE MAGAZINE DO NOT**  
**NECESSARILY REFLECT THE OPINION OF**  
**THE EDITORS NOR REPRESENT THE**  
**OFFICIAL POLICY OF CALIFORNIA**  
**STATE UNIVERSITY, SAN BERNAR-**  
**DINO. EDITORIAL AND ALUMNI**  
**INFORMATION AND PHOTOGRAPHS**  
**SHOULD BE SENT TO THE CAL STATE**  
**SAN BERNARDINO EDITOR,**  
**CSUSB PUBLIC AFFAIRS,**  
**5500 UNIVERSITY PARKWAY,**  
**SAN BERNARDINO, CA**  
**92407-2397**

**GOOD QUALITY B&W PHOTOGRAPHS**  
**ARE WELCOME. POLAROIDS OR**  
**PHOTOGRAPHS PRINTED ON TEXTURED**  
**PAPER ARE NOT ACCEPTED.**

**EDITOR**

Cynthia Pringle

**ART DIRECTOR / DESIGNER**

Jay Wampler

**PRODUCTION ASSISTANTS**

Jason Groom  
Gary Jackson

**EDITORIAL ASSISTANTS**

Sam Romero  
Mary Colacurcio

**PHOTOGRAPHERS**

Dan Moseley  
Larry Rose

**CONTRIBUTING WRITERS**

Jeanne Denise Haley  
Laurie Sinclair  
Terrie Jo Snyder

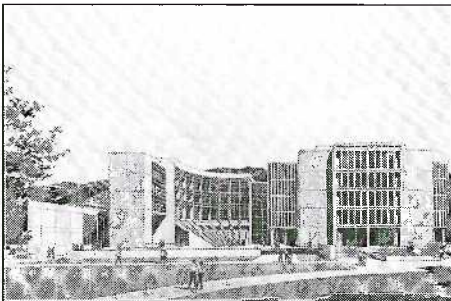


## BUSINESS, INFORMATION SCIENCES BUILDING NAMED JACK H. BROWN HALL



A \$1 million gift to the university made personally by Jack H. Brown (left), president and chief executive officer of Stater Bros. Markets, will be applied toward the enhancement of the business and information sciences building currently under construction on campus. Targeted for completion a year from this November, the 80,000-square-foot edifice will be dubbed Jack H. Brown Hall in honor of Brown's generosity, the largest gift to date that the university has received. President Anthony Evans (right) commented on the momentous occasion in July.

### LIBRARY, STUDENT UNION EXPANSIONS ADD TO CONSTRUCTION ACTIVITY



If you haven't been on campus for more than a year and you plan on coming back soon, bring your hard hat. The long-awaited expansion of the Student Union (top) broke ground in February and the Pfau Library addition (bottom) got underway in April. The Union is expected to be completed by May of next year while the library construction will finish in the spring of 1994.

### PROGRAMS, ENROLLMENT CONTINUE TO INCREASE AT COACHELLA VALLEY CENTER

A new emphasis in small business management within the existing business administration degree program is being added to the nearly 60 classes available through the university's satellite campus in Palm Desert this fall. Having just marked its fifth anniversary serving students in the Coachella Valley, the Cal State center's roster has swelled from an initial 80 students in the fall of 1986 to more than 700 during the past year.

### BAJA UNIVERSITY PARTNERSHIP PROMISES ENRICHING EXPERIENCES

San Bernardino's sister city relationship with Mexicali was strengthened in April when Cal State signed an agreement with the University of Baja California to facilitate educational and cultural exchanges between the two institutions. The universities share interests in education, business, economics, urban planning and geothermal energy.

### GRADUATE TRAINING AVAILABLE FOR URBAN PLANNERS

Mid-level planners seeking to advance their professional skills will benefit from a master's degree in urban planning being added to the curriculum this fall. The new interdisciplinary program is the only one of its kind offered in the Inland Empire, explains Dr. James Mulvihill (Geography). The degree's offerings, including development finance and land management, are "hands-on courses that have direct application to the day-to-day work of urban planners," he remarks.

"Given the great amount of undeveloped mountain and desert areas within the Inland Empire, this program seeks to provide students with a solid understanding and appreciation of the impact of urban activities on these fragile environments," Mulvihill adds.

### UNIVERSITY BECOMES NATIONAL EXAMPLE OF PARTNERSHIP



Lauded as the national example of "Creating Professional Development School Partnerships between Universities and Public Schools," Cal State's alliance with the Hillside-University Demonstration School in San Bernardino earned CSUSB a Christa McAuliffe Showcase for Excellence award June 15. At a Washington, D.C. ceremony, President Anthony Evans accepted the honor, which was named after the teacher who perished in the Challenger space shuttle disaster.



# SCHOOL OF BUSINESS AND PUBLIC ADMINISTRATION

**Shel Bockman** (Management) and **Barbara Sirotnik** (Information and Decision Sciences) conducted several studies this year, including a needs and satisfaction survey of brokers reacting to services provided by Century 21, and a study of the shopping habits of Twentynine Palms residents. Another project of theirs is a state-of-the-art data repository for the Coachella Valley that compiled a labor force and demographic profile of the region.



*Martin Matich, a Colton developer, was honored as the business school's Arrowhead Distinguished Chief Executive in May.*

How is growth management in California affected by state and regional policymakers? **Guenther Kress** (Public Administration) collaborated with **Randi Miller** (Sociology) on such an evaluation, which resulted in some specific recommendations for Inland Empire civic agencies.

School Dean **David Porter** received the only honorable mention awarded by the James C. Webb Award competition as part of the American Society for Public Administration conference.

*Your Executive Image*, written by **Victoria Seitz** (Marketing), hit the bookstores last spring, giving



*The business and information sciences building, now known as Jack H. Brown Hall, has been running six months ahead of the schedule almost since the project began last fall. School of Business and Public Administration Dean David Porter gave Stater Bros. CEO, Jack Brown (right), a tour in July.*

jobhunters tips on self-marketing, body language, etiquette and dress. Seitz also was awarded a research grant for her study of the *Direct Response Advertising of Fashion Products in the U.S. and Foreign Markets*.

The nation's largest juvenile-adult correctional facility, the Herman G. Stark Youth Training School in Chino, has benefitted from the work of **Clifford Young** (Public Administration). He set up an automated management information system that may serve as a model for other similar computer-

ization needs throughout the country. Currently, New Jersey is the only state, other than California, to attempt automation of correctional facilities. Young's work has earned him nearly \$160,000 in grant monies from the California Youth Authority in the past year.

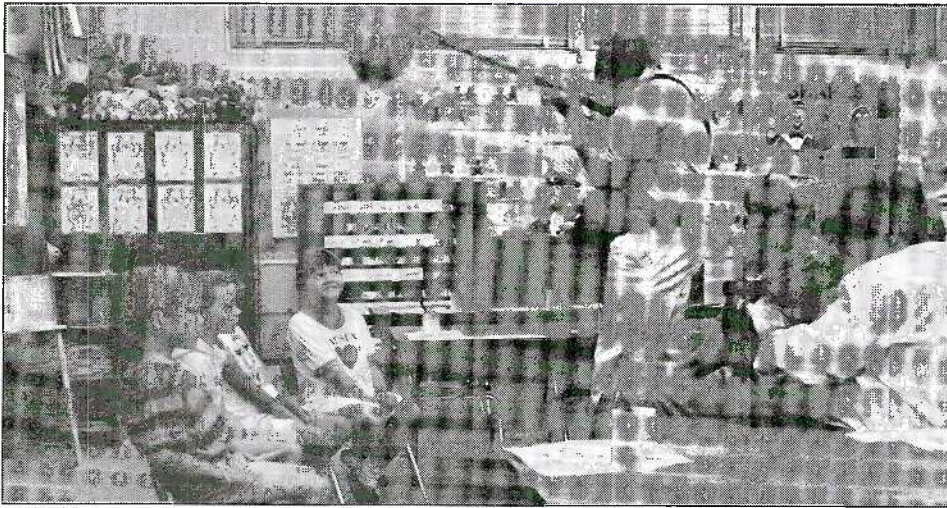
**Ken Thygerson** (Accounting and Finance) devised *A Model for Measuring Retail Depository Branch Profitability* in an article for the fall 1991 issue of the *Journal of Retail Banking*.

## STUDENT PROFILE



### Friendly Campus Key for Kimiko

"The growth occurring here is bound to bring more opportunities to the students," believes sophomore **Kimiko Glenn**. Despite all the new developments on campus, Kimiko, a marketing major, says the campus is still small enough to provide students with individual attention. "The professors here are very supportive and they care about and establish friendships with the students." Kimiko also was attracted to the campus's "relaxed atmosphere and friendly people" as well as the excellent reputation of the Marketing Dept.



Cal State and the Hillside-University Demonstration School are the only American sites featured in a one-hour special television documentary on Reading Recovery filmed by the British Broadcasting Corp. and broadcast in England on Sept. 15.

The training of school board candidates is the aim of **Billie Goode Blair** (Advanced Studies), who was awarded a Danforth Foundation Grant of approximately \$26,000 to begin such a program.

A \$205,000 grant from the federal government was the largest amount awarded this year under the Educational Personnel Training Program of the Office of Bilingual Education and Minority Language Affairs. **Lynne Diaz-Rico** (Elementary and Bilingual Education) will use the funds to continue her Bilingual Educators' Career Advancement Program, which boasts the largest number of graduate students in the CSU system.

*Changing Attitudes Toward People with Disabilities* was the focus of the collaborative efforts of **Joanne Eichinger** (Advanced Studies), **Terry Rizzo** (Physical Education) and **Barbara Sirotnik** (Information and Decision Sciences), who published the article in *Teacher Education and Special Education*.

An attempt to set national teaching standards and develop a universal assessment tool for teacher certification is being undertaken by **Barbara Flores** (Advanced Studies), who has been appointed to a nationwide team of educators working on these influential issues.

The critical need to train special education intern teachers over the next several years received a \$406,000 boost from the federal government with a grant to **Marjorie McCabe** (Advanced Studies). McCabe and colleague **Dwight Sweeney** (Advanced Studies) also were busy looking at stress factors affecting teachers of behavior-disordered pupils this year, presenting the results at the annual convention for the Council for Exceptional Children.

*Teaching Thinking and Literacy*, **Gary Negin's** (Elementary and Bilingual Education) new book, breaks new ground in

STUDENT PROFILE



Support Helps Student Flourish

When deciding which university would best prepare her to become a teacher of English literature, **Yvonne Atkinson** faced many choices. "I have a learning disability that could present some difficulties if the school I chose were not devoted to providing a great education for everyone. Cal State has great support groups and programs—a lot of people." She finds the professors approachable and challenging. "They make you think for yourself because most of the classes aren't lecture based." A professional storyteller, Yvonne won an award for a story she wrote for the *Pacific Review*, the university's literary journal published annually, and she's been on the Dean's List and captured a pre-doctorate scholar award.

the field of literacy due to its philosophical approach and its interesting descriptions of reading, writing, study strategies and teaching.

Strategies for involving students in the evaluation of their reading and writing difficulties were developed by **Patricia Tefft-Cousin** (Advanced Studies) and presented to the National Council of Teachers of English Conference.

In Memoriam



Kathy O'Brien

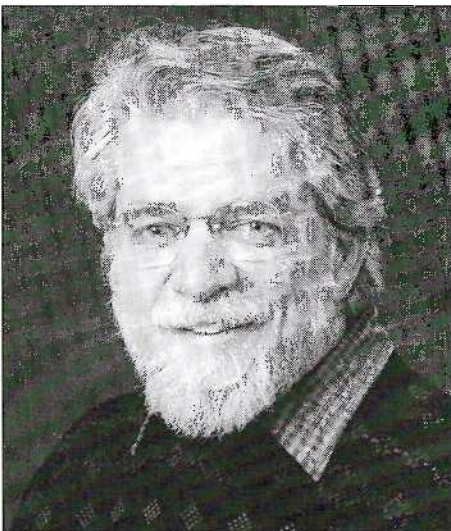
Shortly before her death in August, **Kathy O'Brien** (Advanced Studies) was honored with a Teacher Leader Award for her work in promoting the internationally acclaimed Reading Recovery program that will be headquartered at Cal State this upcoming year. Her leadership was key to bringing the first-grade reading intervention program to California and she will be missed greatly.





One of the top five plays in the nation, Cal State's original theatrical work "A Warring Absence" was selected from more than 800 college productions in the country for performance at the Kennedy Center in Washington, D.C. last spring. Playwright Jody Duncan (left) costarred with fellow alumnus Doug Buckhout.

Foreign Languages Professor **Ruth Burke** was among a select group of 20 chosen to take part in a summer institute to develop prototypes for multimedia that can be used in language acquisition projects.



Pete Fairchild

**Pete Fairchild** (English) was honored with the Edward Stanley Award for poems published in the 1991 *Prairie Schooner*. In addition, he received a fellowship to attend the Sewanee Writers' Conference and he shared with **Gloria**

**Cowan** (Psychology) the Outstanding Professor Award bestowed by the San Bernardino Area Chamber of Commerce.

**Cheryl Harris** (Communication Studies) served as a judge for two film and video festivals in Washington, D.C. and San Diego. She was honored with the top paper award at the Broadcast Education Association Conference for

her work on *The Raters Berated: A History of the Congressional Investigation of Audience Measurement Techniques in Television Broadcasting*. Currently, Harris is in the midst of researching the debate on fetal rights issues in the public media.

**Richard Johnston** (Art) has been selected to design a sculpture landscape for the library at Dixie College and two sculptural gardens for the State Hospital in Utah.

Having completed the fourth and final volume of his ongoing research on the work of 14th century composer Johannes Galliculus, **Art Moorefield** (Music) also has published a three-volume *Study Guide for Music History*. Moorefield and Music Dept. colleagues Ed Bostley and Larry McFatter also formed a Faculty Music Trio this year, offering concert performances throughout the Inland Empire.

One of 15 scholars invited to give perspectives on assessment for a U.S. Department of Education conference on National Goals for Education, **Ed White** (English) also completed a new book, *Assigning, Responding, Evaluating: A Writing Teacher's Guide*.

STUDENT PROFILE



**Native Heritage Defines Grad's Interest**

Named the university's outstanding graduate student in June, **Julie LaMay Abner** begins work on a Ph.D. in literature at the University of California, Riverside, this fall. Already teaching at Cal State and Riverside Community College, Julie credits Cal State English Professor Rodney Simard for helping her realize her goals of becoming an English instructor: "He taught me how to be a professor and a professional....My experience here at CSUSB has gone way beyond what I've learned in the classroom." Currently in the process of compiling an anthology of traditional and contemporary American Indian literature, Julie says her Native American "heritage is a sacred part of my life. I try to promote inner peace and hand down Native American traditions to my students and my family; I try to encourage the belief that everyone is important and has a special contribution to bring to society."



These kidney cells magnified 1500 times by an electron microscope at CSUSB are an example of the capabilities afforded by the university's development of a comprehensive Electron Microscope and Image Analysis Center.

the highly concentrated program integrates math, physics, astronomy and computer science. Although there are no grades or college credits for the students to gain, "these students are changed at the very end of the program," Connolly submits, and "they end up at some of the best colleges in the nation."

Women's perceptions of the menopausal experience have been under the scrutiny of **Sandra Cross** and **Joseph Lovett** (Health Science and Human Ecology), who have presented their findings to the National Council on Aging and the Association for Women in Psychology.

Discovering unknown "uniqueness results" in trigonometric series, **Chris Freiling** and **Dan Rinne** (Mathematics) have "proved uniqueness for rectangular convergence for any number of dimensions," Freiling explains. The question, "Can a function have more than one trigonometric series that converges to it?" was solved for one dimension in 1870, and in two dimensions (circular and rectangular convergence) in the 1950s and '70s. Now, with the help of a \$50,000 grant from the National Science Foundation, the Cal State math colleagues will continue to pursue the question of uniqueness for the still unknown square convergence in two dimensions and for circular in three dimensions.

STUDENT PROFILE

Outstanding Undergrad Pursues AIDS Research

**Tae-Wook Chun**, honored as Cal State's outstanding undergraduate student in June, begins doctoral work in immunology and virology at Johns Hopkins University School of Medicine this fall on a full scholarship. He wants to join the army of researchers searching for a cure for AIDS. The 24-year-old Korean native became a member of the Phi Kappa Phi National Honor Society in his junior year at Cal State, where he says his experience as a research/laboratory assistant has been invaluable. "For students seeking more in-depth studies beyond the normal course requirements, the faculty are willing to encourage students and to support them. I think we have excellent faculty members here."

Tracing human birth defects back to a molecular level by analyzing proteins in amniotic fluid, **Nicole Bournias-Vardiabasis** (Biology) continues to build upon her research that has been lauded for being an alternative to animal testing. Previously, she was using fruit fly cells in her work. This past year she received a \$16,000 renewal grant from the Johns Hopkins Center for Alternatives to Animal Testing and she also received \$23,000 from the Demeter Fund.

A \$100,000 matching grant from IBM enabled **Arturo Concepcion**, **Kay Zemoudeh** and **Owen Murphy** (Computer Science) to establish a laboratory for courses in computer architecture. With the lab, students can design computer hardware systems and test them with the aid of software simulation, which is a more cost-effective teaching method compared to purchasing the necessary hardware.

"Learning for the sake of learning," is how **Leo Connolly** (Physics) describes the motivation of 38 high school students who collaborated on research during the Summer Science Program in Ojai. Connolly has directed the part-time academic program for the past eight years. Supported by funds from the National Science Foundation,

The summertime earthquakes in San Bernardino County gave **Sally McGill** (Geological Sciences) untold opportunities to examine earth displacement. She was among "an army" of researchers who set about mapping the 70 kilometer rupture caused by the Landers earthquake on June 28. Earlier this year, she received a \$5,000 grant to study a San Bernardino segment of the San Andreas fault and she continued her research on the Garlock Fault, which stretches 150 miles from the Tejon Pass of Interstate 5 east to Death Valley.

A look at the *Kurdish Refugee Resettlement: An Environmental Health Perspective* was the focus of a paper that **Gary Shook** (Health Science) presented to the California Environmental Health Association Update Conference. His work on this topic was commended by the International Rescue Committee, which provided medical services to the Kurds.

The ongoing research into the basic properties of ferroelectrics by **Tim Usher** (Physics) received a \$13,000 boost from the Research Corp. this year. Usher has been able to collaborate with several students and at least one high school teacher in his research, which has the potential to expand the memory capabilities of computer technology, among other applications.



# SCHOOL OF SOCIAL AND BEHAVIORAL SCIENCES



Elliott Barkan

Receiving his third Fulbright scholarship in less than a decade, **Elliott Barkan** (History) will be teaching immigration and American ethnic history at the University of Trondheim in Norway this year. His previous fellowships have taken him to India and England.

Helping public school students better understand economic concepts and issues has been the aim of **Jim Charkins** (Economics) for several years. In addition to heading up the university's Center for Economics Education, Charkins has been selected as the editor of the classroom edition of *The Wall Street Journal*.

Cultural practices affecting women's work and health in Sudan will be studied in greater depth by **Ellen Gruenbaum** (Anthropology) with a \$3,000 grant that will help her to return to that country on sabbatical leave.

A \$150,000 grant from the state Department of Health Services for Action to Control Tobacco was awarded to **Elizabeth Klonoff** and **Jan Fritz** of the university's Behavioral Health Institute.

The redirection of military personnel to "socially useful" economic endeavors is being studied by **Nancy Mary**



Ellen Gruenbaum

(Social Work), who is interested in the extent to which social workers are involved in economic conversion projects throughout the U.S.

Earthquake preparedness in San Bernardino and nearby Southern California communities has been studied over a five-year period by **Ted McDowell** (Geography) and his students. Results show that public knowledge of seismic hazards has improved over the past decade and that most of those surveyed recognize that they will be responsible for their own survival during and immediately following a catastrophic quake.

## STUDENT PROFILE



### Economics Major Appreciates Diversity

One of the most attractive aspects of Cal State, San Bernardino, according to **Brian Lees**, is "the wide variety of interesting courses offered not only in the 'core' classes, but also in the general education requirements." Brian, a sophomore majoring in economics, says CSUSB is a "fantastic campus with a lot to offer. Cal State draws from such a diverse, large area. I've met lots of interesting people from all over Southern California who are usually cheerful and have a positive outlook." Brian would like to become an economics analyst with a major financial firm and he feels confident that with his education at Cal State, he'll "enter the business world fully prepared."

Prison disciplinary processes as they relate to prison overcrowding is just one topic that husband-and-wife team **Marilyn McShane** and **Frank Williams** (Criminal Justice) took a look at this year. They examined (along with colleague **David Shichor**) employee turnover in corrections, and published an article on *Making the Police Proactive: An Impossible Task for Improbable Reasons* in *Police Forum*.

What influences slow growth initiatives? Is it population density, the housing market, race or politics? **Jerrell Richer** (Economics) is doing a comparative analysis with data from urbanized cities to propose explanations for growth control measures in California.

**Nancy Rose** (Economics) received the Frank R. Breul Memorial Prize in social welfare history for her article, *Work Relief in the 1930s and the Origins of the Social Security Act*.

Shedding light on the dynamics of domestic violence was the goal of a training session that **Geraldine Stahly** (Psychology) provided for the California District Attorneys Association last spring.

The status of California's women in the paid labor force was the subject of research conducted by **Jenny Zorn** (Geography), who also focused on gender wage gaps in metropolitan areas this year.



From art to lectures to outdoor fun, Cal State, San Bernardino offers a variety of activities for the entire family. Keep this quarterly calendar handy. Share and enjoy.

Due to occasional changes that are beyond our control, participants are encouraged to call ahead to confirm an event. For more details on events found in the magazine, call the phone number listed after each description. All numbers are in the 714/909 area code.



Claude Akins

**Oct. 8**

**Celebrity Dinner Show.**

On the eve of a scholarship benefit golf tournament for university athletics, the banquet will feature celebrity host Claude Akins, motion picture and television star. Dinner will be followed by a show and dance. 6 p.m., Cal State Commons. \$30 per person. Reservations required. 880-5011.

**Oct. 9**

**Celebrity Golf Tournament.**

Featuring motion picture and television star Claude Akins, the 1992 Coyote Golf Classic will benefit the athletic scholarship fund at Cal State. 8 a.m., Shandin Hills Golf Club. Breakfast and buffet luncheon included. \$100 per registrant. Advance registrations required. 880-5011.

**Oct. 14**

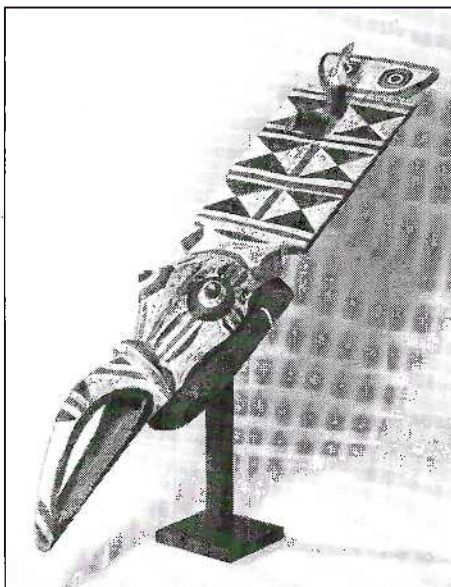
**Music.**

Duo pianists. Gustavo and Maria Tolosa. 8:15 p.m., Recital Hall. General admission \$6, students and senior citizens \$4. 880-5859.

**Oct. 17-Dec. 17**

**Art Show.**

"The Matthews Collection. African Art: Old and New." Exhibit of authentic African tribal artifacts intermixed with traditional prints and paintings representative of West and Central Africa. Collected over a nine-year period by Jane Matthews, who has donated the 77-piece array to the permanent collection of the university. Opening reception, Oct. 18. TBA. University Art Gallery in the Visual Arts Building. Free. Wheelchair accessible. Gallery Hours: Mon.-Fri., 9 a.m. - 4 p.m. 880-5810.



**Oct. 29**

**Comedy Night.**

"Hot Sexy and Safer Sex." Comedian Suzi Landolphi gives a comical review about sex in the '90s. 8 p.m., Lower Commons plaza. Free. 880-5234.

**Nov 6-8 & 11-15**

**Theatre.**

"Our Town" by Thornton Wilder. A play about the extraordinary impor-

tance of life's ordinary, daily events. Curtain time 8:15 p.m., with exception of Nov. 8 and 15 shows, which are 2 p.m., Sunday matinees. Creative Arts Building. General admission \$8, senior citizens and CSUSB alumni (with Alumni Association membership card) \$5, students \$3. 880-5876.

**Nov. 7**

**Music.**

J.S. Bach's Coffee Cantata. Jean Saladino, soprano; Loren Filbeck, baritone; Jerrold Pritchard, flute. 8:15 p.m., Recital Hall. General admission \$6, students and senior citizens \$4. 880-5859.

**Nov. 19**

**Billiards Demonstration.**

Trick shot artist, Jack White, shows off his amazing and bizarre skills on the pool table. 11 a.m. - 1 p.m., Wylie's Pub, Student Union. Free. 880-5234.

**Dec. 2**

**Music.**

CSUSB Symphonic Band. Luis Gonzalez, director. 8:15 p.m., Recital Hall. General admission \$5, students and senior citizens \$3. 880-5859.

**Dec. 2 & 3**

**Arts & Crafts Faire.**

On- and off-campus groups offer a variety of arts and crafts for display and sale. 8 a.m. - 4:30 p.m., quad area. 880-5234.

**Dec. 4**

**Music.**

Alumni Artist Recital. William Adams, baritone. 8:15 p.m., Recital Hall. General admission \$6, students and senior citizens \$4. 880-5859.

**Dec. 6**

**Music.**

CSUSB Concerto Choir. Loren Filbeck, director. 8:15 p.m., Recital Hall. General admission \$6, students and senior citizens \$4. 880-5859.





## Swimming Shelved in Budgetary Cutback

Men's and women's swimming have been suspended from the Cal State athletics program as a budget reduction measure for 1992-93, reports David Suenram, athletic director. The cut will have little impact on returning students, because only one or two swim team members were scheduled to return this year.

By dropping the swimming programs, the athletic department will save about \$15,000 of state money, and \$4,000 in scholarship money will become available for other sports.

With the discontinuation, Cal State will field eight sports, four for men and four for women, which is the minimum number required for membership in the NCAA at the Division II level.

## Spellacy Establishes Athletic Scholarship

Kim Hansen, returning women's basketball forward, is the first student-athlete to benefit from a new scholarship established by Freddie Spellacy, owner of San Bernardino-based real estate franchise, Spellacy and Associates. The \$1500 annual athletic scholarship will benefit women's basketball for each of the next five years, notes David Suenram, athletic director.

Although she did not designate her gift for a particular sport, Spellacy believes she's made a good investment. "I've always been excited about the fact that we have the university and its influence here in the community," she says. "I felt compelled to give something back."



Kim Hansen is the first recipient of an athletic scholarship established by Freddie Spellacy.

### Sports Calendar

#### OCTOBER

- 3**  
**Men's Soccer**  
Cal State, Bakersfield 1 p.m.  
**Women's Soccer**  
Metro State College 3 p.m.
- 6**  
**Women's Volleyball**  
Cal State, Los Angeles 7:30 p.m.
- 7**  
**Women's Soccer**  
U.C. San Diego 3 p.m.
- 12**  
**Men's Soccer**  
U.C. San Diego 3 p.m.
- 13**  
**Women's Volleyball**  
Chapman University 7:30 p.m.
- 14**  
**Women's Soccer**  
Chapman University 1 p.m.  
**Men's Soccer**  
Chapman University 4 p.m.
- 23**  
**Women's Volleyball**  
U.C. Riverside 7:30 p.m.
- 24**  
**Women's Soccer**  
U.C. Irvine 2 p.m.  
**Women's Volleyball**  
San Francisco State Univ. 7:30 p.m.
- 31**  
**Women's Soccer**  
Univ. of Northern Colorado 11 a.m.  
**Men's Soccer**  
Cal State, Los Angeles 1 p.m.

#### NOVEMBER

- 3**  
**Women's Volleyball**  
Southern California College 7:30 p.m.
- 10**  
**Women's Volleyball**  
Cal State, Bakersfield 7:30 p.m.
- 13**  
**Women's Volleyball**  
Cal Poly Pomona 7:30 p.m.
- 19**  
**Women's Volleyball**  
Cal State, Dominguez Hills 7:30 p.m.
- 20**  
**Men's Basketball**  
High Five America (Exhibition at Victor Valley High School) 7:30 p.m.
- 20 - 21**  
**Women's Basketball**  
Cal State, San Bernardino "Tipoff Tournament" - CSUSB, U.C. Santa Cruz, Cal State Stanislaus & Pembroke State. TBA
- 24**  
**Men's Basketball**  
L.I.F.E. Bible College 7:30 p.m.
- 27**  
**Women's Basketball**  
East Texas State 7:30 p.m.
- 28**  
**Men's Basketball**  
East Texas State 7:30 p.m.
- 30**  
**Men's Basketball**  
Humboldt State 7:30 p.m.

#### DECEMBER

- 1**  
**Women's Basketball**  
California Baptist 7:30 p.m.

- 2**  
**Men's Basketball**  
The Master's College 7:30 p.m.
- 11**  
**Men's Basketball**  
Pacific Christian College 7:30 p.m.
- 18**  
**Women's Basketball**  
U.C. Davis 7:30 p.m.
- 21**  
**Women's Basketball**  
Augustana (SD) College 7:30 p.m.
- 22**  
**Women's Basketball**  
Cal State Hayward 7:30 p.m.
- 29 - 30**  
**Men's Basketball**  
CSUSB "Coyote Cage Classic" Christian Heritage, Azusa Pacific, St. Martins (WA) TBA

#### JANUARY

- 2**  
**Men's Basketball**  
Sonoma State 7:30 p.m.
- 8**  
**Women's Basketball**  
Occidental College 5:45 p.m.  
**Men's Basketball**  
Cal State Bakersfield 8:05 p.m.
- 9**  
**Men's Basketball**  
Cal Poly San Luis Obispo 7:30 p.m.

All listings are home games (unless noted otherwise). For more information call the CSUSB Athletics Dept. at (714) 880-5011.

1991-92

# HONOR ROLL OF DONORS



**PARTNERSHIP  
2000**

*B u i l d i n g   o n   t h e   C o r n e r s t o n e   o f   K n o w l e d g e*

OUR TRIBUTE TO  
THE MANY  
FRIENDS WHOSE  
GIFTS AND  
VOLUNTEERISM  
SUSTAIN AND  
ENRICH THE  
UNIVERSITY'S  
ACADEMIC,  
CULTURAL AND  
RECREATIONAL  
PROGRAMS.

## ALUMNI

### CLASS OF 1967

#### FOUNDERS CLUB

Lois Carson

#### FRIENDS OF CAL STATE

Donald E. Beard  
Elinor M. Harmer  
Carl R. Sundin

### CLASS OF 1968

#### UNIVERSITY ASSOCIATES

Ted Krug

#### FOUNDERS CLUB

Dr. Yolanda T. Moses  
Helen M. Mues  
Carol E. Ott

#### FRIENDS OF CAL STATE

Daniel Carrasco  
Phyllis M. King  
Shirley S. Marshall  
Scott D. Showler  
Margaret E. Slider

#### OTHER FRIENDS

Maria E. Ill

### CLASS OF 1969

#### FOUNDERS CLUB

Rosemary T. Binney  
M. Susan Miller  
Patti Penski

#### FRIENDS OF CAL STATE

Barbara A. Bolanos  
William Christelman  
George A. Kulak  
Judith A. Remele

#### OTHER FRIENDS

Jean Bourbeau  
Shirlee J. Flowers  
Robert D. Hyde  
Sue E. Nagel

### CLASS OF 1970

#### FOUNDERS CLUB

Louise Hulbrock  
Marie C. McCafferty  
Mary H. Rowe

#### FRIENDS OF CAL STATE

Jonny L. Bollinger  
Gary Cosand  
Judy A. Monroe  
Ismael S. Paredes  
Russel Varano

#### OTHER FRIENDS

Stephen W. Langjahr  
Juanita M. Whitacre

### CLASS OF 1971

#### CUM LAUDE SOCIETY

Dr. Frank X. Woolard

#### FOUNDERS CLUB

Lawrence Adams  
John W. Dodson  
Mary D. Donovan  
Robert E. Hodge, Jr.  
Richard A. LaCues  
Rachel B. McKinney  
Mitzi W. Wells

#### FRIENDS OF CAL STATE

Dorothy Barnell  
Steven M. Bauer  
Kay DiAntonio  
Richard M. Leeson  
James A. Prendergast  
Linda J. Price  
James Robertson  
Frederick C. Sayle  
Danny L. Steele  
Robert A. Strech

#### OTHER FRIENDS

Kenneth L. Becknell  
Betty M. Dale  
Stephen Imialek

### CLASS OF 1972

#### FOUNDERS CLUB

Virginia L. Berry  
Donald B. Blish  
Harry Christian  
Cheryll A. Koleszar  
Marshall G. Rich  
Lawrence P. Sousa  
Marjorie Widmeyer

#### FRIENDS OF CAL STATE

Joseph T. Artino  
Richard A. Bagwell  
Dr. J. Milton Clark  
Ronald G. Gasparini  
Wayne M. Harp  
Charles Neumann  
Margaret J. Olinger  
Charles Shane  
George N. Suel  
Marilyn Van Norman

#### OTHER FRIENDS

Edward A. Carloni  
Gary D. Sveum  
Jeanne S. Thornton

### CLASS OF 1973

#### FOUNDERS CLUB

Daryl L. Kraige

#### FRIENDS OF CAL STATE

William Biretta  
Michael M. Chauvet  
Carol L. Cole  
Arvita G. Crabtree  
Linda C. Felgar  
Lynne M. Finley  
Joanne Fluke  
Richard L. Knudsen

John S. McHenry  
Rhonda C. Philson  
Diana Reyes  
Marjorie A. Scott  
Cheryl K. Smiley  
Patsy A. Snyder

#### OTHER FRIENDS

Phyllis A. Finkelstein  
Rebecca J. Halliburton

### CLASS OF 1974

#### FOUNDERS CLUB

Claudia C. Crandall  
Eileen Kaufman  
Michael E. Meehl  
Richard P. Morrall  
Keith Saar  
Patricia Whitacre

#### FRIENDS OF CAL STATE

Guadalupe Andrade  
John R. Cheetham  
Dennis L. Draeger  
Enez Heidenreich  
Jody L. Isenberg  
Christopher J. Jimenez  
Maria C. Leon  
Maria Lootens  
Cheri L. Marks  
Benita L. Roberts  
Veronika Stein  
Patricia B. Strohecker  
Irene G. Tuttle  
Maria A. Villarreal  
Joel D. Wecksler  
Kenneth W. Zink

#### OTHER FRIENDS

Vincent T. Grosso  
Michael C. Hanisee  
Kenneth D. Lemmon  
Danny M. Redfern  
Marcia C. Weaver

### CLASS OF 1975

#### PRESIDENT'S CIRCLE

Nicholas J. Coussoulis  
Linda J. Stockham

#### FOUNDERS CLUB

Edward A. Bruce  
Patricia J. Carthen  
Carla H. Krause  
Rita M. Wheat

#### FRIENDS OF CAL STATE

Juan Almanza  
Salvatore J. Bellia  
Steven G. Boostrom  
Carol L. De Lapp  
Arnold R. Franz  
Dr. Stephen N. Hordynski  
Kurt L. Kalbus  
Thomas R. Laurin  
Daniel C. Moyer  
David F. Munter  
Errol N. Strecker  
Michael R. Teeter  
Robert Vedo  
Ronald E. Veelik

#### OTHER FRIENDS

James S. Brigham  
Wilma L. Dougharty  
Bruno Gavrioloia  
Florence E. Mullendore  
Doris J. Williams

### CLASS OF 1976

#### FOUNDERS CLUB

Sharon E. Britt  
Kris Crudup  
Anne K. Crum  
George B. Epps  
James R. Kissinger

#### FRIENDS OF CAL STATE

Khalid Ahmad  
David E. Amori  
Virginia T. Arciniega  
Gail E. Berg  
Angela L. Carman  
Robert F. Condon, Jr.  
Deborah Dauphine  
Vera L. Durrant  
Juan M. Esqueda  
Enrique Garcia  
Anthony J. Krupinski  
Francis L. Lootens  
Harold O. Moberg  
William J. Romatko  
Nellie Sehestedt  
Evelyn L. Solomon  
Danny W. Thomazin  
Cora L. Tomiska  
Connie Zacarias

#### OTHER FRIENDS

William P. Brian  
Richard A. Castellano  
Robert C. Gayl  
Beverly L. Perdue  
Brooks B. Roll  
Gretchen Stangl-Charlton

### CLASS OF 1977

#### CUM LAUDE SOCIETY

Joan M. Blackman  
Roland W. St. Louis

#### UNIVERSITY ASSOCIATES

Lawrence S. Eisenhart  
James N. Kennedy  
Cheryl E. Smith

#### FOUNDERS CLUB

Katherine E. Downie  
Dianne J. Ergish  
Cheryl A. Flowers  
James D. Hamilton  
Dale A. Le Neve  
Nancy R. Pettus  
Kenneth D. Rolf, Jr.  
Michael Rosenfeld

#### FRIENDS OF CAL STATE

Cynthia J. Balteria  
Donald S. Bandy  
Martha A. Berkompas  
Edward C. Bolin  
Donald C. Bradley II  
Jo A. Cox

Shelley E. Cunningham  
James E. Eggert  
Kenneth C. Hancock  
Barbara E. Hardy  
Victor P. Keaton  
Orville F. Lint  
Margaret F. Livingston  
Yvonne F. Lowrance  
Jacquelyn A. Lura  
Geraldine F. Madden  
Douglas J. McElhane  
Omar J. Pertel  
Gail J. Puckett  
Leslie K. Rotstein  
Samuel C. Scott  
Betty I. Stanfield  
Max E. Tidler  
L. Joy Viselli  
Bobby C. Whiteley

#### OTHER FRIENDS

Steven W. Burt  
Betty B. Kingry  
Joann Nichol  
Mary H. Spurlock  
Jan Vondra  
Carol A. Wiley

### CLASS OF 1978

#### UNIVERSITY ASSOCIATES

Floyd C. Leach, Jr.  
Janice L. Lemmond

#### FOUNDERS CLUB

Ruth M. Colarossi

#### FRIENDS OF CAL STATE

Sondra Anderson-Heimark  
Connie C. Arnone  
Judy A. Barbo-Partain  
David T. Boggs  
Jeannette L. Brainard  
David G. Buchanan  
Renato Cervantes  
Cathy Claborn  
Nellie Cortez  
Robert L. Donnell  
Patrick T. Flaherty  
Timothy C. Green  
Kathryn R. Guerin  
Kenneth P. Guillaume  
Susan S. Haugh  
Emily G. Hobdy  
Mark R. Holmes  
Ted F. Hopkins II  
William Kuhlman  
Phillip J. Laure  
Lorena M. Loper-Evans  
Gilbert W. Lukkonen  
Opal S. McNeal  
Monica T. Melton  
Taft T. Newman  
Shannon H. Ng  
Joanne M. Paulson  
Maurice M. Payne  
Charles A. Pobjoy  
Vicki G. Powell  
Adrienne M. Reeves  
Anna Maria Rodriguez  
Susan E. Strickland  
Peggy Sue Tilden  
Melinda J. Toler

Robert E. Tracy  
Robert E. Tremont  
Sharon W. Wolff

#### **OTHER FRIENDS**

Linda J. Garfield  
Larry E. Patterson  
Colleen L. Pope  
Thomas E. Sherrier, Sr.

#### **CLASS OF 1979**

##### ***PRESIDENT'S CIRCLE***

John W. Kennedy, Sr.  
John Raymond, Jr.

#### **UNIVERSITY ASSOCIATES**

Calvin M. White

#### **FOUNDERS CLUB**

Marco A. Cota  
Terry L. Hill  
Allen R. Hoglund  
Helga E. Lingren  
Rolla S. Parks  
Mark K. Ulmer  
Lorraine S. Yannone

#### **FRIENDS OF CAL STATE**

Mark G. Adelson  
Mark A. Altenstadter  
Pamela J. Beekman  
Rodney A. Bernat  
William D. Brakemeyer  
Cecilia Carrasco  
Chice A. Davison  
Celeste De Zan, Jr.  
Ruth A. Drago  
Jan E. Ebej  
Catherine S. Fehrenbach  
Gayle Fichtner  
Barbara S. Gambill  
Deborah Gelsomino  
Joseph Gonzalez  
Richard E. Heitman  
Zita M. Hillinger  
David M. Kason, Sr.  
Elka K. Kelly  
Mary H. Lopez  
Victoria Magathan  
Joan L. Mathews-Wilcox  
Judy K. Matthews  
Donaldean S. Meares  
Armand D. Messer  
Hilda R. Milkovich  
Quentin J. Moses  
Carolyn L. Preston  
Linda A. Sage  
Shirley A. Snofsky  
Daryl E. Thorpe  
Betty J. Weischadle  
Angelia G. Wyles  
Gary R. Zitzner

#### **OTHER FRIENDS**

Doris Billings  
Leland F. Carmean  
Jeanine A. Derby  
Patricia A. Estrada  
Mildred L. McKim  
Peter J. Petsas  
Daniel E. Scuiry  
Geraldine A. Yearwood

#### **CLASS OF 1980**

##### **FOUNDERS CLUB**

Daniel R. Coates, Jr.  
Daniel Kopulsky

##### **FRIENDS OF CAL STATE**

Joan Bacon  
Trudy Baylis  
John H. Bulmer  
Sibyl J. Disch  
Aldrich C. Famisaran  
Mark L. Fife  
John R. Gilbreath  
Alice J. Glazier  
Gary L. Green  
Marilyn Heavilin  
Dorothy M. Hibbard  
Davis H. Hopper  
Debra K. Hopper  
Emmanuel L. Humphries  
John P. Kaptain, Jr.  
Dennis W. Kraus  
R. G. Kunde  
Gerald A. Marlatt  
Linda A. Meyer  
Eugene E. Mitchell  
Stanley J. Neves  
Jana C. Ondrechen-Wible  
Estella V. Palacio  
Cecilia A. Palomino-Lopez  
Alyce R. Papin  
Timothy J. Pavlian  
Diane Poarch  
Robert D. Price  
Michael N. Radsick  
Renee Randleas  
Lawrence A. Salazar  
Elizabeth L. Walck  
David L. Wilder

##### **OTHER FRIENDS**

Deborah Dybowski  
Melba F. Haag  
Corinne A. Schnur  
Marlene D. Theiss-Harris  
James E. Wells

#### **CLASS OF 1981**

##### ***PRESIDENT'S CIRCLE***

Darlene Johnson

##### **FOUNDERS CLUB**

Debra S. Allen  
Margaret R. Foss  
Norma L. Lyons  
Brooke McKnight

##### **FRIENDS OF CAL STATE**

Joy A. Albin  
Joyce G. Baral  
Roy E. Bean, Jr.  
Patricia A. Bowman  
Patricia Bruner  
James F. Canter  
Karen A. Dutcher  
John R. Engelman  
Terry Ferrone  
Farolyn Hanscom  
Rebecca Hiroto  
Nancy J. Hrachiar  
Janice L. Irvin

Louise E. Kinslow  
Alan London  
Ronald G. Martin  
Frank R. Medina  
Anna M. Meredith  
Joan E. Neumann  
David A. Ornelas  
Eliseo Rodriguez  
Thomas J. Ruvalo  
Catherine B. Shehan  
Scott D. Sheldon  
Debra M. Simpson  
Betty Snow  
Mark J. Stinson  
Walter R. Ware  
Richard S. Watts  
Abraham S. Zakar

##### **OTHER FRIENDS**

Timothy D. Arner  
Lori Glick  
Timothy A. Murdoch  
Diane S. Whitehead  
Lynn S. Winner

#### **CLASS OF 1982**

##### **FOUNDERS CLUB**

David L. Chesebro  
Gale M. Gosney  
Antoinette Holmeyer  
C. A. Ritchie  
Charlotte E. Searcy  
Alexander Waldman, Jr.  
Rebecca Warren-Marlatt

##### **FRIENDS OF CAL STATE**

Lawrence J. Asmus  
Rosario Atayde  
John C. Backer II  
Charlotte C. Black  
William B. Brigman  
David L. Bristow  
Patricia M. Chubbuck  
Jacques R. Cooper  
Judy D. Coulton  
Jolinda K. Curtin  
Bonita A. Dutchover  
Wendy Ellingsen  
David A. Furst  
James E. Hinkle  
Jay F. Hosfield  
Julie G. Kratz  
Sharon L. MacGillivray  
Kathleen M. Mitchum  
Dr. Ruth W. Morpeth  
Judy Nelson  
Carolyn Oskam  
Nancy M. Paschal  
Peter R. Petrucci  
Russell T. Pilkington  
Judith Powers  
Richard L. Reifer  
Eileen C. Rutmayer  
Eddie W. Ryan  
Kenneth A. Schmidt  
Frank T. Slaton  
Timothy P. Squires  
James B. Watson  
Catherine E. Whitmore  
Pat J. Wolff

##### **OTHER FRIENDS**

Margaret L. Boyd

Sandra K. Carter  
Viki Chavez-Regeski  
Gary Cominotto  
Sharon R. Cranford  
James T. Delperdang  
Sandra L. Diaz  
Denver Drieberg  
Margaret V. Foot  
Eva M. Hargreaves  
Gilbert L. Jimenez  
Leah G. Rentz  
Ernest C. Stephens

#### **CLASS OF 1983**

##### **UNIVERSITY ASSOCIATES**

Kathleen A. Grossman

##### **FOUNDERS CLUB**

Mary S. Almgren  
Mary E. Demarco  
Rhett A. Fry  
Allyn H. Kruse  
Teresa J. Larimore  
Vicki Morris  
John P. Wood

##### **FRIENDS OF CAL STATE**

Susan F. Achuff  
Larry Buck  
Judith A. Bullard  
Nancy L. Evans  
Helen F. Farnam  
Joan M. Hayes  
Richard J. Hickey  
Leila A. Kachevas  
Charles L. Kasten  
Betty J. Ludwick  
Robert E. McLaughlin  
Janet R. Morrissey  
Connie M. Polino  
Eric J. Schessler  
David C. Stevenson  
Shari L. Stockwell  
Caroline S. Weeks  
Lorrie L. Wilson  
Irma A. Wozniak  
Thomas S. Wulbrecht  
Joanne M. Wyman  
Delores A. Wynn

##### **OTHER FRIENDS**

Sherri L. Bacon  
Valerie J. Beveridge  
Michele J. Butler  
Cynthia A. Cotter  
Margie L. Drumm  
Stephanie A. Hom  
Iris Q. Mayers  
Thomas H. Reghi

#### **CLASS OF 1984**

##### **CUM LAUDE SOCIETY**

Athene G. Sparks

##### **UNIVERSITY ASSOCIATES**

Sharon Fiekowsky  
Dianne L. Huppman

##### **FOUNDERS CLUB**

James M. Jernigan  
Margaret A. Koster

Charles McCray, Jr.  
Frieda S. Milowsky  
Ross G. Miyashiro  
Cleate E. Rose  
William C. Stevenson  
Mendy L. Warman

##### **FRIENDS OF CAL STATE**

Darcy J. Beck  
Mary-Frances Broitenstein  
Sharon L. Carrow  
Robert J. Cassinelli  
Michael J. Castrovinci  
Linda J. Charkins  
Wilma Christensen  
Connie Crouch  
Carl S. Elser  
Graciela Fermier  
Marian V. Gerardo  
Cheryl A. Gilbert  
Evelyn J. Haggard  
Eric C. Jacobson  
Nancy Jude  
John R. Kazalunas  
Vicki K. Lamborn  
Harry H. Larsen  
Gloria P. Lendo  
Beverly K. Lively  
Lisa L. Long  
Clarice H. Lubel  
Lupita R. Pisalyaput  
Thomas J. Reid  
Donna L. Sertic  
Richard Spangler  
Patricia L. Studdard  
Diane R. Titsworth  
Kennadine M. Turner  
Kim E. Weggeland  
Karen J. Weylandt  
Norma N. Whitbread  
Kellie L. Whittaker  
Karen C. Wilmot  
Vicki L. Wyant  
Lynne Youngstrom

##### **OTHER FRIENDS**

Nannette Denney  
Jacklyn M. Hester  
Thais E. Kanold  
Debra J. Loukatos  
Shari L. Mills  
Robert G. Reynolds  
Eleonora M. Sztaray  
Susan A. Trost

#### **CLASS OF 1985**

##### **CUM LAUDE SOCIETY**

Pamela D. Langford  
M. Carol Parente

##### **UNIVERSITY ASSOCIATES**

Jervis D. Gooden

##### **FOUNDERS CLUB**

Maryhelen E. Anderson  
Cheryl Dunagan  
Stephen C. Dunn  
Paul E. Jamerson  
Maureen E. Latham  
Patricia McKinster  
George A. Steidle  
Laura D. Stevenson  
Victor Zupancich



**FRIENDS OF CAL STATE**

Julie A. Acton  
 Robert H. Becerra  
 James E. Berger  
 Barbara Brandt  
 Barbara J. Burrell  
 Norma T. Castillo  
 Margie Chase  
 Cheryl L. Clark  
 Edwin A. Creasman  
 Susan Critchfield  
 Bruce W. Doucett  
 Margret E. Finnell  
 Lucille C. Gomez  
 Karin A. Grance  
 Alice B. Granewich  
 Lynda L. Hadley  
 Dane Hammerstein  
 M. Derice Hogle  
 Susan V. Honadle  
 Aurora J. Huesca  
 Anne O. Lessard  
 Mary L. Lindgren  
 Gregory D. Lovingood  
 Mary A. McGaughey  
 Catherine I. McNairn  
 Lorraine T. Moore  
 Esequiel J. Mora  
 Lucille H. Olvera  
 Cheryl L. Peil  
 Oscar Pender, Jr.  
 Roy A. Perry  
 Marcia A. Pifer  
 Lloyd Pruitt, Jr.  
 Lucy F. Sandy  
 Cheryl L. Sautter  
 Karen L. Smith  
 Adela Spangler  
 Geraldine A. Unmack  
 Claudia J. Vallentine  
 Florian W. Zielinski

**OTHER FRIENDS**

Patricia Cheeseman  
 Henry Curwen  
 Steven R. Farrant  
 Mary S. Fitzwilliam  
 Christina R. Gonzales  
 Maureen T. Gummow  
 Kathy Peach  
 Nanette Pearson  
 Kay M. Todd-Davis

**CLASS OF 1986****UNIVERSITY ASSOCIATES**

Kristin L. Saukel  
 Beverly A. Smith

**FOUNDERS CLUB**

Clifford W. Byerly  
 Jesse R. Robles

**FRIENDS OF CAL STATE**

Sara E. Andon  
 Constance A. Arellano  
 Roberta L. Babbage  
 Wendy L. Ball  
 Brett M. Bayless  
 Thomas F. Breikreuz  
 Steven L. Byerly  
 Sheila D. Coble

Ann D. Curtis  
 Shirley A. Dawson  
 John E. Diebold, Jr.  
 John D. Donovan  
 Laura J. Dreier  
 Marisa L. Dubas  
 James P. Edgmon  
 Drew F. Harding  
 Remus A. Haste  
 Lan N. Hoang  
 Olufunmilayo O. Idowu  
 Enas S. Joseph  
 Ralm Jung  
 Sharon L. Kaste  
 Terry L. Keiser  
 Linda L. Kent  
 David Lelli  
 Joseph A. Losi  
 Tanya J. Mauldin  
 Shama Menon  
 Paula D. Moscrop  
 Bette J. Nichka  
 John K. Orr  
 Viola C. Perez  
 Ruth W. Plotkin  
 Jill F. Posadas  
 Joan M. Prehoda  
 Marilee J. Rendulich  
 Mary L. Ruxlow  
 Frances A. Samples  
 Pierrette M. Serna  
 Gordon L. Shulda  
 Thomas E. Singer  
 Nancy F. Stevens  
 Kimberly J. Tingle  
 Linda S. Todd  
 Heidi J. Waechtler  
 Jean Weinfurter

**OTHER FRIENDS**

Mary E. Burchett  
 Barbara A. Henny  
 Gloria S. Molino  
 Irene T. Ogata  
 Steven J. Ramsey  
 Ana M. Spitzmesser  
 Lucia Valencia  
 Odette Winn

**CLASS OF 1987****UNIVERSITY ASSOCIATES**

David P. DeMauro  
 Harriet P. Gibson  
 Paul R. Mata

**FOUNDERS CLUB**

Carol L. Anselmi  
 Thomas A. Atkinson  
 Cherrlyn Eller  
 Kathleen E. Kinley  
 Kevin D. Morningstar  
 Cheryl A. Mosher  
 Harriet J. Spitz

**FRIENDS OF CAL STATE**

Teresa E. Aguilera  
 Linda Welker Arneson  
 Charles J. Barkley  
 Steven A. Barkley  
 Marna V. Boch  
 Janis Brams  
 Roseanna S. Brinker

Debra S. Carlisle  
 Robert I. Clarke  
 Gerald A. Corsi  
 La Veda G. Drvol  
 R. E. Dustman  
 Eileen T. Eglund  
 Katherine J. Falkner  
 Michael J. Gordon  
 Joseph E. Gott  
 Laren R. Hirst  
 Nancy S. Hunt  
 Tina M. Ibbs  
 Donna J. Johnson  
 Elois P. Johnson  
 Lester M. Kushner  
 Jeffrey W. Lafrenz  
 Sandra Lourenco  
 Manuel Lucero  
 Anthony A. Luck  
 Marilyn C. MacKendrick  
 Alain B. Mathey  
 Sondra K. Morison  
 Robin J. Narvarte  
 Thanh Nguyen  
 Tersila N. Partin  
 Patricia A. Revelles  
 Robert P. Rowan  
 Paul P. Sanchez  
 Jill P. Satoski  
 Elizabeth A. Scholz  
 Carol A. Scott-Uffer  
 Julia L. Seeman  
 M. L. Straube  
 Donna S. Vanderwall  
 Kevin B. Varner  
 Theresa C. Vietty  
 Catherine L. Wedel  
 James F. Wheelock  
 Victoria A. Wical

**OTHER FRIENDS**

Carol L. Beck  
 Barbara M. Bell  
 La Mont A. Carroll  
 Ryan M. Cherland  
 Monica A. Ford  
 Maria C. Gamboa  
 Rhonda P. Granillo  
 Florence M. Johnston  
 Judith A. Jones  
 Steve Kanouse  
 Susan E. Larcabal  
 Carla R. Legerton  
 Dorothy M. Michener  
 Marcia M. Mulvaney  
 Jeannette M. Philippi  
 Mattie S. Popineau  
 Tami S. Silver  
 Dwight D. Wash  
 Kraig A. Williams  
 Paveena Zibell

**CLASS OF 1988****UNIVERSITY ASSOCIATES**

Gerald A. Peterson

**FOUNDERS CLUB**

Shelley R. Abrams  
 Patricia A. Braymer  
 Jeffrey L. Francisco  
 Michael K. Ireland  
 Joan T. Little  
 Pamela K. Ogonowski

**FRIENDS OF CAL STATE**

A. Ron Achtziger  
 Donna M. Anzai  
 Arlene Asuelime  
 Mario E. Baeza  
 Edward Bennett  
 Gwendolyn W. Bunnell  
 Mary A. Bush  
 Bernard G. Castro  
 Chris R. Coplen  
 Karen S. Deal  
 Maria E. Deanda  
 Ronald F. Demarkles  
 Lisa G. Draper  
 Judy Filsinger  
 David A. Gabonay  
 Jane C. Gearhart  
 Edwina N. Golightly  
 Tracy H. Gravlin  
 Thomas J. Gueston  
 Valeria E. Hatch  
 Yoko O. Hayashi  
 Daniel C. Healy  
 Wende M. Hester  
 Gary C. Hinckley  
 Tom Hollihan  
 Charlene A. Hollis  
 Rozanne Hug  
 Elizabeth M. Jenks  
 Peggy J. Kehr  
 Angelos A. Lambis  
 Kathleen C. Landkammer  
 Jean M. Landry  
 Julie D. Lewis  
 Mary M. Marino  
 Robert B. McBay  
 Paula A. McGrew  
 Randy J. Moothart  
 Kieu M. Ngo  
 Bill W. Nottingham  
 Debora M. Pap  
 David A. Pavao  
 Joseph F. Pennachi  
 Samuel R. Rangel  
 Sharon E. Raymond  
 Frank R. Robson  
 Edward E. Rose, Jr.  
 Myra P. Rosenzweig-Ttee  
 Candice Salsler  
 Kuldeep K. Sartor  
 Kathleen P. Schiller  
 Dorothy K. Simcoe  
 Marie L. Starkey  
 George L. Stimson Jr.  
 Mary Sullivan  
 Edward J. Szumski  
 Andrew P. Telford  
 Mark D. Texter  
 Yoon Hee Yeh

**OTHER FRIENDS**

Constance L. Colgan  
 Thomas J. French  
 Kristina L. Froelich  
 Marie A. Griffiths  
 Debra A. Hinshaw  
 Marty Horton  
 Gladys J. Housley  
 Patricia A. Maxheimer  
 Linda T. Mead  
 Mary T. Orcasitas  
 Katherine M. Richter  
 Trisha C. Russell  
 Rebecca L. Towner

Robert L. Underwood  
 Ann J. Wages  
 John G. Weber

**CLASS OF 1989****FOUNDERS CLUB**

Donna L. Filadelfia  
 Yogeeta P. Kulkarni  
 James J. Scanlon

**FRIENDS OF CAL STATE**

Steven A. Abeln  
 Jo M. Barbo  
 Jerrilee Bergom  
 Tammy L. Beverage  
 Jacquelyn J. Billaud  
 Ann P. Biro  
 Lisa K. Bostrand  
 Charlotte A. Boytor  
 Lloyd M. Bradshaw  
 Vicki A. Buckley  
 Cathleen C. Campbell  
 Susan A. Cooley  
 Leslie J. Copelin  
 Dennis Coulter  
 Toni J. Curbow  
 Angie L. Duran  
 Delia P. Fant  
 Deborah L. Felkel  
 Gregory A. Franklin  
 Lisa M. Gierloff  
 Harold H. Gue  
 Bruce F. Hanke  
 Michael J. Hans  
 Catherine M. Haywood  
 James K. Hedrick  
 Judith A. Hernandez  
 Janet A. Houshmandzadeh  
 Yingliang G. Hsu  
 E. Mary Ketza  
 Barbara J. Killingbeck  
 Edward A. Knutson  
 Michael D. Lackie  
 Darlyne Lamb-Chaplin  
 Bruce A. Lipe  
 Wing C. Liu  
 John A. MacLeod  
 Anuj Malik  
 Tania N. Marien  
 Cathryn L. McGill  
 Johanna E. Melcher  
 Gloria R. Meltzer  
 Monica D. Meng  
 Sheryl J. Mentz  
 Deborah A. Meredith  
 Carol A. Miter  
 Joseph F. Pautz  
 Claudia G. Pohl  
 Elizabeth M. Quinn  
 Diane B. Raley  
 Richard W. Rawnsley  
 George W. Schnarre  
 Diane E. Sill  
 Kermit L. Simms  
 Esther L. Steers  
 Judy L. Stovner  
 Robert D. Summers  
 Louis M. Syllain  
 Joseph R. Van Driesen  
 Victoria R. Vaughan  
 Yvonne L. Waworuntu  
 Suzanne D. Weckerly  
 Brenda S. Weddington

Jana L. Wiggle  
Gloria Woo

#### OTHER FRIENDS

Vickie Campbell-Hawkins  
Danielle R. Chesbrough  
Bonnie Congdon  
Rick Diaz  
Laura J. Dierking  
Kathryn L. Evinger  
Elvin W. Fugate  
Laurel E. Gunderson  
Carolyn C. Kelley  
Lynnette M. McDermott  
Sandra L. Mortensen  
Brent L. Redfield  
Mario J. Ruiz  
Edye L. Sizelove  
John E. Stark  
Mary J. Sterba  
Emleen S. Uy Godinez  
Sharna R. Wilson

#### CLASS OF 1990

##### FOUNDERS CLUB

Kathleen L. Devalk  
Jodyne D. Duncan  
Barbara S. Herrin  
Olga J. Morales  
Diana Z. Rodriguez  
Nancy E. Tank  
Mark B. Taylor

##### FRIENDS OF CAL STATE

Jennifer Aguirre  
Christopher B. Ahearn  
Cynthia M. Biskner  
Marcie L. Bonato  
Victoria J. Bosinski  
Debra S. Brigle  
Wanda Broaden  
A. Ann Clandening  
Karlene Deranian  
Keith W. Fosgett  
Lynne M. Frattini  
John H. Gilner  
Craig M. Halder  
Frank Hambalek, Jr.  
Sean P. Hannan  
Carole A. Harmon  
Kathleen M. Heath  
Susan L. Hilliard  
Debra L. Hitter  
Judith R. Horwath  
Cathy A. Ibbs  
Duane D. Jacobsen  
Gerald G. Kasinski  
Daniel A. Kasperick  
Susan C. Kaufman  
Yvonna M. Kean  
Sushma Lal  
Kevin S. Lamb  
Arthur J. Lattany  
Rodger R. Lehl  
Mary H. Lukkarila  
Ruth G. Lyons  
Gloria T. Makholm  
Anita I. Martinez  
Sally M. Merritt  
Amy E. Molla  
Norma A. Noriega  
Terri J. Ottosen  
Paige M. Peyton

Susan M. Philo  
Satomi Purefoy  
Barbara K. Redding  
Robert P. Roark  
Tammy R. Ross  
Steven A. Rutz  
Sandra K. Schouten  
Mary C. Seager  
Johnson Selvadurai  
Manuela S. Silvestre  
Yvonne R. Sisk  
Mary K. Slamer  
Martine R. Slater  
Sarah A. Thomson  
Rita A. Vasquez  
Katie R. Viehmann  
Bruce G. Weeks  
Sharon Wild  
Linda J. Wilson-Smith  
Virginia M. Zientara

#### OTHER FRIENDS

Constance A. Barhyte  
Mary A. Bennett  
Kathleen A. Bonine  
Robert L. Bottoms  
Stacy M. Bowles  
Janet K. Burton  
Jennifer E. Carder  
David A. Cards  
Sharol A. Crosby  
Carmela M. DePrisco  
Nancy R. Geib  
Dian A. Hare  
Ida J. Haughn  
Julie F. Hoffman  
Donna M. Jones  
Jeanie A. Kearney  
Joanne V. Lavender  
Morgan J. McColum  
Laura M. Nelson  
Ann P. Palmieri  
Mary E. Sampson  
Ricky L. Scoggins  
Dean R. Stanphill  
Cathy Sutfin  
Cynthia L. Tudehope

#### CLASS OF 1991

##### FOUNDERS CLUB

Linda F. Morrisette

##### FRIENDS OF CAL STATE

William G. Adamaitis  
Ruth S. Aldrich  
Karen L. Anderson  
Margaret J. Ashworth  
Barbara M. Bales  
Nancy Barnicoat  
Maxine Basabe  
Linda A. Bidaki  
Rosemary Black  
Graciela Bobadilla  
Bret S. Boettcher  
Jon F. Bonvillain  
Margaret A. Boydell  
Darren D. Bush  
Olga Chavira  
Stephen J. Cramer, Sr.  
Christy R. Crespin  
James J. Curtis  
Carol Doucette  
Audrey A. Dryden

Elizabeth A. Foley  
Holly K. Haggerty  
Christopher R. Hale  
Gerald S. Hamilton  
Craig J. Harris  
Deborah L. Harris  
Lynne A. Harris  
Jeanne M. Hawthorne  
Gregory A. Hazzard  
Sandra J. Henley  
Linda J. Hernandez  
Diane G. Johnson  
Pamela L. Johnson  
Connie C. Jones  
Cynthia B. Libby  
Anthony Longhetti  
Tamara J. Lundy  
Joyce M. Marshall  
Julie A. Masek  
Rebecca McCaughey  
Darlene A. McGillick  
Jimmy R. Melton  
Patricia J. Merriam  
Susan R. Moore  
Eileen M. O'Brien  
Evelyn A. O'Prey  
Val M. Potter  
Ron G. Rapp  
Richard D. Sanchez  
Deborah J. Tesch  
Susan Trexler-Kiskis  
Daniel K. Whornham

#### OTHER FRIENDS

James R. Astle  
Judith A. Barkman  
Pete Batchkoff  
Jared E. Bell  
Janet R. Beloz-Perez  
Cindi Blair  
Charlotte K. Brannigan  
Kathleen M. Carbaugh  
Christopher D. Carosella  
Sharon O. Carson  
George B. Casey  
Tena L. Cessna  
Janet M. Crowley  
Darlene De Woody  
Carole O. Dockstader  
Julie S. Eastman  
Lawrence E. Ellis  
Velda M. Friedman  
Ann Imlay-Spangler  
Suzanne E. Jones  
Ivy L. Kaufhold  
Joyce Knox  
Gina C. Lacey  
Lynn L. Lowe  
Linda J. Martin  
Loel M. Meredyth  
Nancy L. Richardson  
William H. Robinson  
Cathy J. Saunders  
Marjorie L. White  
Sophia Wong

#### CLASS OF 1992

##### FOUNDERS CLUB

James W. Sharer

##### FRIENDS OF CAL STATE

Cynthia R. Preston

#### OTHER FRIENDS

Julie L. Abner  
Bridgette Barnett

#### PARENTS

##### CUM LAUDE SOCIETY

Mr. & Mrs. Lyle G.  
Spalding  
Mr. & Mrs. Daniel R.  
Tregarthen

##### UNIVERSITY ASSOCIATES

Mr. & Mrs. Louis M. Avalos  
Ernest Bell  
Linda Bradley  
Mr. & Mrs. Richard A.  
Clark, Sr.  
Mr. & Mrs. Dennis L.  
Downey  
Mr. & Mrs. Sam V. Gallo  
Mr. & Mrs. Robert S.  
Johnston  
Mr. & Mrs. Charles Lytle  
Mr. & Mrs. John W. O'Brien  
Mr. & Mrs. Leo A. Paige  
Mr. & Mrs. Lawrence R.  
Rice  
Mr. & Mrs. Tim Rochford  
John Tobin  
Mr. & Mrs. Robert A.  
Tvrdevich  
Mr. & Mrs. Melvin Wilson

##### FOUNDERS CLUB

David Almquist  
Mr. & Mrs. Albert M.  
Andon  
Mr. & Mrs. J. W. Baldwin  
Duane Banner  
Mr. & Mrs. Leonard B.  
Bayaca  
Paul Bradley  
Mr. & Mrs. Gene Bridges  
Mr. & Mrs. Edward  
Byrne, Jr.  
Dr. & Mrs. Benjamin A.  
Campomanes  
Dr. & Mrs. Mark J.  
Carpenter  
Mr. & Mrs. Bradley Carson  
Mr. & Mrs. Bob Castillo  
Mr. & Mrs. Roger E.  
Cejalvo  
W. Don Conley  
Sharron J. Cordaro  
Mr. & Mrs. Danny W. Cross  
Hoa Dang  
Mr. & Mrs. Don Day  
Mr. & Mrs. Jason Decker  
Dr. & Mrs. James R. Dunn  
Mr. & Mrs. Henry Z.  
Figueroa  
Mr. & Mrs. Robert J. Foley  
Mr. & Mrs. David W.  
Fosgett  
Arlys Franklin  
Daryl Frazier  
Mr. & Mrs. Larry Fuller  
Mr. & Mrs. Micheal C. Gage  
Mr. & Mrs. David V. Garcia  
Mr. & Mrs. William Garcia  
Somthorn Goh

Mary B. Gonzalez  
Mr. & Mrs. Londell Graves  
Bruce Haselman  
Mr. & Mrs. Donald R.  
Hellon  
Mr. & Mrs. Linvol G. Henry  
Robert Herness  
Mr. & Mrs. Sisto J. Holguin  
Mr. & Mrs. Robert J. Huey  
Mr. & Mrs. Burl Hunt  
Russ L. Huston  
Mr. & Mrs. John L. Ibbetson  
Virginia Janis  
Mr. & Mrs. Harold E.  
Johnson  
Mr. & Mrs. Richard V. Kahn  
Mr. & Mrs. Ralph Kermonian  
Mr. & Mrs. Michael F.  
Kettle  
Ken Kozlowski  
Bernard Lim  
Mr. & Mrs. Jeff P. Lin  
Mr. & Mrs. Theodore Linton  
Mr. & Mrs. Michael  
Londelius  
Mr. & Mrs. Joseph R. Lopez  
Nancy Lopez  
Clara Lozano  
Phyllis A. Lucas  
Mr. & Mrs. Al Luna, Jr.  
Mr. & Mrs. Franklin G.  
Maberry  
Hortensia Magana  
Mr. & Mrs. Robert L.  
McAdams  
Mr. & Mrs. Mike  
McCouston  
Robert McCune  
Mr. & Mrs. Fausto V.  
Mendoza  
Mr. & Mrs. Garry L.  
Muehlich  
Mr. & Mrs. Fernando  
Nuesca  
Mr. & Mrs. Porter D. Olive  
Mr. & Mrs. Alfred Ortiz  
Karl Osborn  
Mr. & Mrs. Roger W.  
Paradis  
Mr. & Mrs. Kenneth H.  
Parker  
George Pastrama  
Hugh Petersen  
Mr. & Mrs. Gerald M.  
Plummer  
Mr. & Mrs. Edwin E. Raffel  
Mr. & Mrs. John C.  
Reisinger  
Mr. & Mrs. W. P. Reynolds  
Mr. & Mrs. Robert Rickli  
Mr. & Mrs. Timothy Risdon  
Mr. & Mrs. Carlos D. Rivera  
Susan W. Roy  
Manuel Sanchez  
La Vonne A. Scott  
David Shaposhnick  
Mr. & Mrs. Louis H. Shaup  
Mr. & Mrs. Abe Simon  
Frances Smith  
Mr. & Mrs. Gabriel G.  
Solorio  
Mr. & Mrs. Robert R.  
Soukup  
Mr. & Mrs. Peter Stein

Mr. & Mrs. Kenneth L. Stone  
 Mr. & Mrs. Roy T. Teramoto  
 Mr. & Mrs. Keith Thornberry  
 Lan Q. Tien  
 Diane Toffle  
 Mr. & Mrs. Thomas G. Troyer  
 Mr. & Mrs. Richard G. Tvedt  
 Mr. & Mrs. Terrence C. Van Buskirk  
 Eugene L. Van Dran  
 Mr. & Mrs. Winston D. Villocino  
 Dr. & Mrs. John P. Washington  
 Mr. & Mrs. John W. Wec  
 Mr. & Mrs. James Welker  
 Mr. & Mrs. Robert K. Wessman  
 Mr. & Mrs. Dee E. White  
 Mr. & Mrs. Alfred A. Wright  
 Facheng Yang

**FRIENDS OF  
 CAL STATE**

Kristin Abrahamson  
 Mr. & Mrs. Alfred Acosta  
 Ramon H. Acosta  
 Mr. & Mrs. Roderick P. Adams  
 Mr. & Mrs. Jeff Adkins  
 Jerry H. Aiken  
 Mary J. Albertson  
 Mr. & Mrs. Gustavo Alvarez  
 Dr. & Mrs. David K. Andes  
 Mr. & Mrs. Carl E. Arnold  
 Constance L. Arokiasamy  
 Mr. & Mrs. Bernardino Arreola  
 Mr. & Mrs. Jose A. Avalos  
 Mr. & Mrs. James Baker  
 Mary N. Balian  
 Jennifer J. Barb  
 Mr. & Mrs. Luis Barba  
 Mr. & Mrs. Jim Barlau  
 Carolyn Bartleman  
 Elinora Baxter  
 Mr. & Mrs. Dennis L. Beene  
 Avelia B. Bell  
 Isabel A. Bellino  
 Mr. & Mrs. George Beloz  
 Mr. & Mrs. John Benson  
 Etifanio Betancourt  
 Mr. & Mrs. Jerry D. Bigbie  
 Mr. & Mrs. Barry Booth  
 Mr. & Mrs. Robert J. Bracken  
 Mr. & Mrs. Gerald A. Braun  
 Anne Briggs  
 Donna R. Brown  
 Mr. & Mrs. Mark H. Brown  
 Mr. & Mrs. Raymond Bucklew  
 Mr. & Mrs. Tawan Bunlong  
 Mr. & Mrs. John T. Bunnell  
 Floyd Burns  
 Mr. & Mrs. Richard Burns  
 Mr. & Mrs. Don R. Burt  
 Mr. & Mrs. Herbert R. Buyak, Sr.

Karen A. Cain  
 Josefina Cancino  
 Emilió S. Caraveo  
 Mr. & Mrs. Juan M. Cardenas  
 Mr. & Mrs. Gerald T. Carlon  
 Mr. & Mrs. Jerry M. Casey  
 Mr. & Mrs. Raymond R. Castro  
 Mr. & Mrs. Jose N. Ceja  
 Issa Chammas  
 Mr. & Mrs. Robert J. Chaparro  
 Mr. & Mrs. Gil J. Chavarria  
 Mr. & Mrs. Hayes Cherry  
 Mr. & Mrs. Ernest Christian  
 Joe Clapsaddle  
 Darlene Claypoole  
 Mr. & Mrs. Larry Coffin  
 Mr. & Mrs. Dennis G. Cole  
 Mr. & Mrs. Charles Coleman  
 Janet Connell  
 Mary Contreras  
 Mr. & Mrs. Ledford M. Cooke  
 Mr. & Mrs. C. R. Cooper  
 Patricia D. Cooper  
 Mr. & Mrs. Robert Coppola  
 Mr. & Mrs. Raul Cornejo  
 Dr. & Mrs. Donald L. Cram  
 Dimas Cuevas  
 Mr. & Mrs. Gerald Steven Cumins  
 Mr. & Mrs. Joe Cummins  
 Mr. & Mrs. Vasco M. da Gama  
 Mr. & Mrs. Robert J. De Jong  
 Mr. & Mrs. Ishwar Desai  
 Noel A. De Trinidad  
 Mr. & Mrs. Richard De Witt  
 Mr. & Mrs. Bill Divine  
 Mr. & Mrs. Gilbert L. Divine  
 Christian Dix  
 Helen Dodson  
 Carol Dominguez  
 Lydia Dorothy  
 Ann Dunbar  
 Mr. & Mrs. Eugene S. Dunlea  
 Mr. & Mrs. Harold L. Durian  
 Mr. & Mrs. Martin C. Du Sold  
 Mr. & Mrs. Wilfredo L. Duyongco  
 Mr. & Mrs. Paul L. Edwards  
 Mr. & Mrs. Alvin Emerson  
 Eleanor Evangelista  
 Mr. & Mrs. Jerry Evans  
 Mr. & Mrs. Dennis Fachler  
 Marie A. Ferguson  
 Raul Fernandez  
 Don E. Finch  
 Mr. & Mrs. John W. Finkenbiner  
 Lt. & Mrs. John Fischer  
 Mr. & Mrs. Melvin Flannum  
 Mr. & Mrs. Seu C. Fong  
 Mr. & Mrs. Frank J. Franov  
 Mr. & Mrs. Benito M. Fuentes

Mr. & Mrs. Judd Gann  
 Sue Gardiner  
 Mr. & Mrs. Robert Gavaldon  
 Mr. & Mrs. Robert L. Geiger  
 Helen Ghiringhelli  
 Mr. & Mrs. Frank Giambalvo  
 Mr. & Mrs. E. John Giliam  
 Mr. & Mrs. F. J. Girard  
 Victor D. Goochey  
 Bob Goodman  
 Mr. & Mrs. William A. Grammer  
 Mr. & Mrs. Kevin R. Griffin  
 Chris Gross  
 Mr. & Mrs. William Gruehl  
 Mr. & Mrs. Jesus Guerrero  
 Mr. & Mrs. Francis Hagar  
 Mr. & Mrs. Bradley C. Hall  
 Watson Hammond, Jr.  
 Mr. & Mrs. Russell Hampton  
 Mr. & Mrs. William C. Hannemann  
 Mark Hanson  
 Mr. & Mrs. Malcolm L. Harbauer, Sr.  
 Mr. & Mrs. Vernon Hardin  
 Mr. & Mrs. Walter R. Harris  
 Mr. & Mrs. George H. Hart  
 Susan L. Hartford  
 Steven F. Hartman  
 Betty L. Heaton  
 Mr. & Mrs. James G. Hedjazi  
 Mr. & Mrs. Dennis E. Hendricks  
 Mr. & Mrs. Carl D. Herbert  
 Mr. & Mrs. Alfonso Hernandez  
 Mr. & Mrs. Tom Hess  
 Mr. & Mrs. Michael A. Hewitt  
 Faye S. Higginbotham  
 Mr. & Mrs. Rex Hilbig  
 Ismael Holguin  
 Valerie K. Honeyfield  
 Mr. & Mrs. Kirk G. Howard  
 Carole J. Hudson  
 Linda R. Huereque  
 Mr. & Mrs. Emmanuel L. Humphries  
 Mr. & Mrs. Kemal A. Hussein  
 Maria Y. Hutchison  
 Mr. & Mrs. Juan G. Ibarra  
 Tom Irwin  
 Mr. & Mrs. Johnny E. James  
 Donna Johnson  
 Mr. & Mrs. Jerome F. Johnson  
 Mr. & Mrs. Ken Kahyai  
 Diane M. Kalinisan  
 Mr. & Mrs. Louis G. Kelly  
 Mr. & Mrs. Richard J. Kelly  
 Mr. & Mrs. Claude J. Kelsey  
 Sue E. Kendall  
 Susie Kenefick  
 Mr. & Mrs. James Kettering  
 Johnny Kidd  
 William King  
 Dr. & Mrs. Howard W. Knowlton  
 James Kulbacki

Chinghui & Ying Lai  
 Doris V. Lasby  
 Mr. & Mrs. Jack A. Lenertz  
 Mr. & Mrs. Wally M. Little  
 Mr. & Mrs. Daniel L. Lloyd  
 Juan Lomeli  
 Richard D. Long  
 Mr. & Mrs. Jose L. Lopez  
 Leticia Lopez  
 Mr. & Mrs. Narvil J. Lowe, Jr.  
 Mr. & Mrs. Ronald P. Lubey  
 Fabian Lucich  
 Mr. & Mrs. Malcolm MacMillan  
 Mr. & Mrs. Joel H. Mallory  
 Norma Manning  
 Mr. & Mrs. Louis J. Manquen  
 Mr. & Mrs. Richard Markley  
 Mr. & Mrs. Jose R. Martin  
 Mr. & Mrs. Floyd A. Martinez  
 Gulzar Masih  
 Maria Matos  
 Joan McBride  
 John N. McCabe  
 Ronald McCaskill  
 Mr. & Mrs. William McCluskey  
 Willie R. McDonald  
 Mr. & Mrs. Walter McNulty  
 Mr. & Mrs. Richard Medina  
 Mr. & Mrs. Daniel G. Mesa  
 Rick L. Miner  
 Mr. & Mrs. Thomas C. Mohan  
 Maria Mojica  
 Dr. & Mrs. Louis G. Monville, Jr.  
 Mr. & Mrs. Thomas W. Moore  
 Kimiko Mortan  
 Mr. & Mrs. Richard A. Mosher  
 Susan E. Nagel  
 Mr. & Mrs. Matthew A. Nardella  
 Mr. & Mrs. Tony Nazarian  
 Mr. & Mrs. Ray E. Neal  
 Mr. & Mrs. Giay Nguyen  
 Tom Nicholson  
 Mr. & Mrs. Frank Nudge  
 Mr. & Mrs. George Nunez  
 Mr. & Mrs. Ronald Nunnally  
 Mr. & Mrs. Lawrence W. O'Nan  
 Rochelle Oquendo  
 Mr. & Mrs. Roy T. Oshiro  
 Paulette R. Pahnke  
 Mr. & Mrs. Benton W. Paine  
 Mr. & Mrs. Robert Paquet  
 Mr. & Mrs. Joseph T. Patterson  
 Mr. & Mrs. Luis A. Pedace  
 Carol A. Peek  
 Mr. & Mrs. Carlos Perez  
 Mr. & Mrs. Aladdin N. Perkins  
 Mr. & Mrs. Gordon C. Perry  
 Kathy Peter  
 Mr. & Mrs. David C. Peters  
 Joyce A. Pillow

Mr. & Mrs. Maurice C. Pivonka  
 Jean Plinski  
 Mr. & Mrs. Jay Plowry  
 Mr. & Mrs. Bob Poland  
 Irvin Pope  
 Mr. & Mrs. Guenter S. Posjena  
 Beth H. Powers  
 Mr. & Mrs. Richard L. Powers  
 Mr. & Mrs. Richard Preston  
 Mr. & Mrs. Jerome J. Prideaux  
 Mr. & Mrs. Robert E. Prieto  
 Mr. & Mrs. Raymond Pryor  
 Mr. & Mrs. Melvin C. Qualls  
 Rose M. Ramirez  
 Agripina M. Razo  
 Col. & Mrs. Gill Read  
 Mr. & Mrs. Gregory S. Reed  
 Mr. & Mrs. H.C. Reed, Jr.  
 Leon Reed  
 Janice L. Retherford  
 Alma Reyes  
 Dorothy K. Rhone  
 Mario Riguis  
 Rev. & Mrs. J. L. Riley  
 Mr. & Mrs. William F. Rock  
 Mr. & Mrs. Bart S. Rodriguez  
 Bob Rogers  
 Mr. & Mrs. Kerry Rogers  
 Tony Romo  
 Mr. & Mrs. Tomas T. Saavedra  
 Pat Saenz  
 Mr. & Mrs. Samuel P. Salas  
 Adrian Sanchez  
 Mr. & Mrs. Jorge Sandoval  
 Mr. & Mrs. Harry M. Saunders  
 Mr. & Mrs. Bill Sauriol  
 Mr. & Mrs. Lyle Schnelle  
 Mr. & Mrs. Robert J. Schoeffler  
 Mr. & Mrs. Norbert L. Schwecke  
 Cpt. & Mrs. Gary Seipel  
 Mr. & Mrs. Louis Serrano, Sr.  
 Mr. & Mrs. Guadalupe R. Serrato  
 Emma Sharpnack  
 Mr. & Mrs. Harvey C. Shaw  
 Mr. & Mrs. Lee Shealy  
 Margaret A. Shearer  
 Robert Silva  
 Elizabeth Sisson  
 Mr. & Mrs. Lewis Slater  
 Mr. & Mrs. Jerry Snead  
 Mr. & Mrs. John Sogi  
 Mr. & Mrs. Salvador M. Soriano  
 Mr. & Mrs. Sam Spaccarotelli  
 Mr. & Mrs. Michael J. Stanbrough  
 Mr. & Mrs. L. T. Stark  
 Mr. & Mrs. Roy Stehle  
 Mr. & Mrs. Daniel Stein  
 Mr. & Mrs. Cecil E. Stewart  
 Mr. & Mrs. James Su  
 Guy Surber

Zubair Syed  
Mr. & Mrs. Norman  
Tacklind  
Mr. & Mrs. Ronald E.  
Talbot  
Janus Tedja  
Ronald Tenoglio  
Mr. & Mrs. David L. Terrell  
Margaret E. Thompson  
Susan Thornburg  
Mr. & Mrs. William J.  
Tiedje  
Mr. & Mrs. James M.  
Tillman  
Mr. & Mrs. Frank W. Timan  
Mr. & Mrs. Henry Tinoco  
Chantal Toliver  
Hope Tompkins  
Susanne C. Totzke  
Mr. & Mrs. Kinh Tran  
Mr. & Mrs. Roy S. Tripi  
Mr. & Mrs. Dennis Troesh  
Mr. & Mrs. Ray Turner  
Marguerite Ullrich  
Mr. & Mrs. Ted L. Vanzant  
Gloria J. Viscomi  
Penny Watson  
Gail B. Webb  
Kenneth E. Wical  
Susie Willhide  
Lenard Williams  
Patricia R. Williams  
Patricia Williams  
Syble Williams  
Mr. & Mrs. Larry J. Wise  
Rosemary Wise  
Mr. & Mrs. Bruce Wood  
Mr. & Mrs. Jim Wulff  
Mr. & Mrs. Nobuo  
Yamanaka  
Mr. & Mrs. Vincent Zamora

#### OTHER FRIENDS

Mr. & Mrs. C. K. Abraham  
Maria Alvarez  
Tracy G. Amador  
Mr. & Mrs. John V.  
Armstrong, Jr.  
Mr. & Mrs. Henry H. Barker  
Ligia Barnaby  
Anthony Bellanca  
Yvonna Betten  
Mr. & Mrs. Jose L.  
Castaneda  
Esperanza Castro  
Mr. & Mrs. Ronald Clark  
Mr. & Mrs. John Constante  
Mr. & Mrs. Richard Daley  
Joan Daniel  
Mr. & Mrs. Ronald D.  
Davies  
Patricia Deehring  
Marlene Derdowski  
Kevin T. Do  
Mr. & Mrs. Perry Erickson  
Vicky Espinosa  
Mr. & Mrs. Ned Feaster  
Mr. & Mrs. Wayne Fink  
Sharon Fong  
Mr. & Mrs. Richard Frank  
Severino Gonzales  
Jane Grijalva  
Mr. & Mrs. William M.  
Grimm

Mr. & Mrs. Edwin B.  
Gritters  
Pamela B. Hallam  
Mr. & Mrs. Charles E. Heald  
Mr. & Mrs. Denis W.  
Heimerman  
Mr. & Mrs. Heliodoro R.  
Hernandez  
Mr. & Mrs. C. T. Holen  
Mary Hunt  
Mr. & Mrs. Dallas W.  
Huntsman  
Mr. & Mrs. Philip L. Irving  
Nova Jamer  
Linda Jennings  
Mr. & Mrs. Donald P.  
Johanneck  
Hazel Jordan  
Mr. & Mrs. Larry J. Jourdan  
William F. Kallweit  
Mr. & Mrs. Michael H.  
Kennedy  
Mr. & Mrs. Raymond  
Koeller  
Mr. & Mrs. Robert  
Kruizenga  
Mr. & Mrs. Mikhail Kutsy  
Mr. & Mrs. John P. Lang  
Debbie Lyles  
Barbara MacMillen  
Mr. & Mrs. Roger A. Nelson  
Charles D. Noble  
Mr. & Mrs. Nemiah Odain  
Mr. & Mrs. Ralph Ojeda  
Rosemarie Palacios  
Ruth Perchez  
Mr. & Mrs. Arturo Q. Perez  
Mr. & Mrs. Emilio G. Perez  
Mr. & Mrs. Albert Pizano  
Evelyn R. Ponder  
Mr. & Mrs. Nicolae Puraci  
Mr. & Mrs. Frank A. Quintal  
Mr. & Mrs. Jose S. Ramos  
Robert Read  
Myong C. Savino  
Mr. & Mrs. David L. Scott  
Karen L. Smith  
Mr. & Mrs. Jet  
Somsuvanskul  
Simon Spencer  
Sally Steckstor  
Mr. & Mrs. William E.  
Stephens  
Judith M. Strack  
Joan Van Ommen  
Mr. & Mrs. Steve Vasquez  
Mr. & Mrs. Laszlo Vass  
Mr. & Mrs. Bernard A.  
Verwiel  
James Vincent  
Christine Webber  
Deborah West  
Edith Wong

#### FACULTY AND STAFF

#### PRESIDENT'S CIRCLE

Anne Crum  
Dr. James D. Crum  
Dr. Anthony H. Evans

Dr. Lee Porter  
Dr. David O. Porter  
Dr. Judith M. Rymer  
Linda J. Stockham  
David L. Suenram

#### CUM LAUDE SOCIETY

Dr. Juan Gonzalez  
James Gooch  
Dr. Dennis L. Hefner  
Jan Hefner  
Dr. Julius D. Kaplan  
Pamela Langford  
Pola Patterson  
Dr. Jerrold E. Pritchard  
Beverly A. Smith  
Dr. Charles S. Stanton  
Dr. David O. Stine  
Kenneth J. Thygeron  
Dr. Joseph Turpin

#### UNIVERSITY ASSOCIATES

Joyce Alta  
Dr. Cynthia E. Bird  
Dr. Aubrey Bonnett  
David D. DeMauro  
Harriet Gibson  
Karla J. Hallum  
James L. Hansen  
Edward W. Harrison  
Dr. Beverly L. Hendricks  
Dr. Hal Hoverland  
Dr. Adria F. Klein  
Dr. Joan H. Kritzberg  
Ted Krug  
Janice L. Lemmond  
Dr. Eldon C. Lewis  
Dr. Fook Liu  
Dr. Janice Loutzenhiser  
Dr. Sarojam K. Mankau  
Dr. Ward McAfee  
C. Don McKenzie  
Dr. Clark P. Molstad  
Dr. James C. Pierson  
Reyes Rios  
Cheryl Smith  
William D. Warehall  
Dale T. West  
Dr. Peter A. Wilson

#### FOUNDERS CLUB

Dr. William Aguilar  
Debra S. Allen  
Michael C. Arredondo  
Dr. Margaret A. Atwell  
Dr. Sheldon E. Bockman  
Dr. Edward J. Bostley  
Dr. Richard Botting  
Dr. A. Vivien Bull  
Dr. B. Jill Buroker  
Dr. John S. Chaney  
Margaret Chavez  
Mary C. Colacurcio  
Teresa Constant  
Dr. Margaret H. Cooney  
Marco Cota  
Dr. David L. Decker  
Dr. Estaban R. Diaz  
Dr. Loren Filbeck  
Paul E. Frazier  
Dr. Catherine Gannon  
Susan N. Garcia  
Dr. Juan C. Gonzalez

Joseph Gray  
Dr. Sue Greenfeld  
Randy Harrell  
Linvol G. Henry  
Dr. Kimball N. Hughes +  
Dr. Sung-Kyoo Huh  
Dr. Dennis L. Ikenberry  
Dr. Janice K. Jackson  
Dr. Jotindar Johar  
Dr. Kenneth Johns  
Keith R. Johnson  
Dr. L. Lynn Judd  
Eileen Kachevas  
Dr. N. Laura Kamptner  
Dr. Mary L. Kornguth  
Sid Kushner  
Dr. Kenneth E. Lane  
Dr. Janice M. Layton  
Helga E. Lingren  
Joseph Liscano  
Dr. Marsha B. Liss  
Dr. Sarojam K. Mankau  
Dr. Ward M. McAfee  
Cecilia McCarron  
Dr. Jack F. McDonnell  
Ross G. Miyashiro  
Olga Morales  
Mary G. Moya  
Dr. T. Patrick Mullen  
Dr. L. Theron Pace  
Dr. Clifford T. Paynton  
Dr. Thomas J. Pierce  
Cynthia Pringle  
Johnnie A. Ralph  
Dr. J. C. Robinson  
Diana Z. Rodriguez  
Dr. C. E. Tapie Rohm, Jr.  
Alfred Saavedra  
Don Saprionetti  
James J. Scanlon  
Mary R. Schmidt  
Mary Anne Schultz  
James W. Sharer  
Nancy P. Simpson  
Frank Slaton  
Dr. William L. Slout  
Dr. Mary F. Smith  
Carolyn R. Smits  
Dr. Darleen Stoner  
Sue Strain  
Dr. Mo Vaziri  
Dr. J. Paul Vicknair  
Antonio D. Vilches  
Mendy Warman  
Rebecca Warren-Marlatt  
Dr. L. Curtis Westbrook, Jr.  
Mary A. Williams

#### OTHER FRIENDS

Dr. Kevin G. Burne  
Dr. Frances S. Coles  
Colleen Corbin  
Dr. Morley Glickin  
Richard M. Johnston  
Dr. John A. Kaufman  
Sant Subagh K. Khalsa  
Dr. Sally Kovach  
Shwu-Ting Lee  
Melody N. Neill  
Danny Redfern  
Gertrude S. Storm  
Kraig A. Williams

#### FRIENDS OF CAL STATE

Mario E. Baeza  
Dr. Joe Bas  
Denise K. Benton  
Dr. Frances F. Berdan  
Dr. David V. Chavez  
Dr. J. Milton Clark  
Peg Clark  
Maisie T. Conceicao  
Robert S. Delgado  
Carol Dunlap  
Karen L. Eastman  
Dr. B. H. Fairchild  
Elsa Fernandez  
Dr. Louis A. Fernandez  
Dr. Susan Finsen

#### FORMER FACULTY AND STAFF

#### UNIVERSITY ASSOCIATES

Dr. James D. Thomas

#### FOUNDERS CLUB

Dr. Richard Ackley  
Dr. Amer M. El-Ahraf  
Dr. John P. Miller  
Cora Lee Moffett  
Roma J. Sill

Dr. Joseph K. Thomas  
James H. Urata

### **FRIENDS OF CAL STATE**

Mary A. Dye  
Dr. Harold A. Jambor  
Mary Newman  
Dr. John M. Pfau  
Stephen Prouty  
Dr. Gordon E. Stanton  
Jo Ann Von Wald

### **FRIENDS**

#### **PRESIDENT'S CIRCLE**

Joseph A. Bailey  
Karen Gilyard  
Dr. W. Benson & Mrs.  
Pamela Harer  
B. Gregory McPhate  
Mrs. Bennet H. Meyers  
Shelby J. Obershaw  
Mr. & Mrs. Mark Siefert

#### **CUM LAUDE SOCIETY**

Mr. & Mrs. Orval Badger  
Mr. & Mrs. William E.  
Leonard  
Mr. & Mrs. Ronald G.  
Skipper  
Mr. & Mrs. Charles Strain

#### **UNIVERSITY ASSOCIATES**

Mr. & Mrs. Leo Cutler  
Elvera A. Erickson  
Dr. & Mrs. Donald J.  
Feldman  
Florentino Garza  
Mr. & Mrs. Allen B.  
Gresham  
Mrs. Ben E. Nordman  
Dr. & Mrs. Irving Root  
Mr. & Mrs. James H. Stark  
Mr. & Mrs. Bruce D. Varner

#### **FOUNDERS CLUB**

Mr. & Mrs. Allen Andrews  
Mr. & Mrs. Harry E.  
Baumann  
Janette Bidart  
Mr. & Mrs. Stuart D.  
Caldwell  
Mr. & Mrs. Roy E.  
Chapman  
Dr. William R. Coleman  
John E. Cote  
Sharon A. Ferguson  
Mr. & Mrs. I. J. Gabriel  
Ron S. Galvan, Sr.  
Dr. & Mrs. Paul G. Godfrey  
Su Hansberger  
Peggy Heeb-Woodhouse  
L. R. Hughes  
Lucretia Hughes  
Constance R. Jury  
Hon. & Mrs. John W.  
Kennedy, Jr.  
Lois Lauer Kennedy  
Harry R. Lambert

Mr. & Mrs. Patrick J.  
Morris  
Mr. & Mrs. Leslie D.  
Murray  
Stanley Pryga  
Nancy C. Rangel  
Mr. & Mrs. Philip M.  
Savage III  
Mignon M. Schweitzer  
Mr. & Mrs. Robert Sedlak  
Mr. & Mrs. Paul Shimoff  
Mr. & Mrs. Fury G. Tenace  
Mr. & Mrs. Barry Wallace  
Ione M. West  
Mr. & Mrs. Max R.  
Wozencraft

#### **FRIENDS OF CAL STATE**

Mr. & Mrs. Joseph  
Ainsworth  
Pamela B. Allen  
Mr. & Mrs. Joshua Beckley  
Mr. & Mrs. Ronald E. Beers  
Mr. & Mrs. Charles J. Berck  
Mr. & Mrs. J. H. Blakeley  
Kaye L. Boesel  
Jimmy L. Braddock  
Marvin R. Brown  
Ruth E. Burke  
Mr. & Mrs. Charles D.  
Carkhuff  
Darlyne L. Chaplin  
Pete Cherniss  
Mr. & Mrs. Bruce  
Clatworthy  
Grant Clatworthy  
Wayne Clatworthy  
Andrew Copeland  
Alan H. Dale  
Linda De Baun  
Mr. & Mrs. Jorge  
De La Torre  
Mr. & Mrs. Richard  
Delmonico  
Michael J. Dudek  
Mr. & Mrs. Pero Dzekov  
Carolyn W. Engel  
Frances L. Feldman  
Mr. & Mrs. Richard M.  
Finkbeiner

Nicola J. Fitz  
Victoria H. Flint  
Mr. & Mrs. Larry Franklin  
Bonnie Friedman  
Mr. & Mrs. Frank Frisch  
Ruth Gardner  
Mr. & Mrs. Perry Glover  
Mr. & Mrs. David Goldware  
Frank L. Gray  
Norman L. Hanover  
Mr. & Mrs. Rick Hansen  
Hazel N. Harden  
Mr. & Mrs. Charles M.  
Healy  
Robb D. Hendrix  
Mr. & Mrs. Fred L. Hinton  
Mr. & Mrs. Patrick D.  
Hipskind  
Marian W. Horine  
Dorothy F. Huff  
Mr. & Mrs. Roy L. Hughes  
Mr. & Mrs. Donald T. Irving  
Mr. & Mrs. Nathan Jackson  
Mr. & Mrs. Jesse J. James

Harriet I. Jason  
Mr. & Mrs. Donald C. Johns  
Mr. & Mrs. Roger Kathman  
Dr. & Mrs. Daniel E. Kirk  
Caroline M. Koch  
Kirk Kushin  
Mr. & Mrs. Larry Lacey  
Damiano P. Manolis  
Peggy McGee  
Mr. & Mrs. Chris  
McNamara  
Christenne M. Moon  
Ann Moore  
Mr. & Mrs. William  
Morris, Jr.  
Anne E. Muscatelli  
John M. Naughton  
Ian Ocasio  
H. L. Oerter  
Gary W. Osborne  
Dian J. Pizurie  
Phila A. Plummer  
Mr. & Mrs. Robert S.  
Putnam  
Mr. & Mrs. Roger Redel  
Harry Rheubottom, Sr.  
Helen L. Robertson  
Mr. & Mrs. Larry Rudder  
Mr. & Mrs. William N.  
Samuel, Jr.  
Danny Sandoval  
Craig Schwartz  
Mr. & Mrs. James F.  
Schwartz  
M. M. Seaton  
J. C. Smith  
Mr. & Mrs. J. Gill Snyder  
Michael D. Steadman  
Ralph Strakal  
Dr. & Mrs. William R.  
Sturlaugson  
Miryana Szabo  
Patricia Terry  
Mr. & Mrs. Michael Tinker  
Mr. & Mrs. Bill Tobia  
Mr. & Mrs. Somphon  
Watanathai  
Stephen C. Watt  
Abby E. Zurier

#### **OTHER FRIENDS**

Charlotte C. Anthony  
Mr. & Mrs. Ivan Arostegui  
Mr. & Mrs. Joseph Beck  
Sandie Butler  
Nancy D. Dollard  
Dr. Eugene L. Dybowski  
Thelma Farr  
Angelina Figueroa  
Mary L. Foye  
Richard M. Friedman  
Mary E. Haynes  
Mr. & Mrs. Paul J. Knuth  
Caroline C. Kolbert  
Mr. & Mrs. Neal S. Larson  
Winton Larson  
Mr. & Mrs. Steven M. Lipan  
Marianne Maiocco  
Ruth Montgomery  
Mr. & Mrs. Donald Olson  
Bill Orr  
Mr. & Mrs. Henry W. Price  
Mr. & Mrs. Mario  
Rodriguez  
Mr. & Mrs. Peter R. Rosati

Nicole E. Russell  
K. J. Sandoval  
Yang Thao  
Mr. & Mrs. R. M. Van  
Orden  
E. George Webster  
Mr. & Mrs. L. A. White

### **BUSINESSES AND ORGANIZATIONS**

#### **PRESIDENT'S CIRCLE**

Anheuser-Busch  
Apple Computer, Inc.  
Atlantic Richfield Co.  
California Department of  
Fish and Game  
Carousel Mall Merchants  
Association  
City of Fontana  
Coachella Valley  
Mexican-American  
Chamber of  
Commerce  
Converse Professional  
Services Inc.  
Corinthians F.C.  
Crown Printers  
Dean Witter Reynolds,  
Inc.  
Dekker Ltd.  
Durham Transportation,  
Inc.  
Friends of Golf, Inc.  
The Jordan Company  
Kiwanis Club of San  
Bernardino  
KPMG Peat Marwick  
Pfizer, Inc.  
Rail-Cycle L.P.  
Riverside Community  
College Associated  
Students  
San Bernardino Valley  
Businessmen  
for Athletics  
San Bernardino Valley  
Municipal  
Water District  
Southern California Gas  
Company  
Sparvan Engineers  
The Steele Foundation  
Union Bank  
Watson Medical  
Laboratories  
Western Association of  
Food Chains  
Lenore H. Whiteside

#### **CUM LAUDE SOCIETY**

Century Homes  
Communities  
East Valley Water District  
Harbor Day School  
Holiday Oldsmobile-Mazda

Lund & Guttery, C.P.A.'s  
McGladrey & Pullen,  
C.P.A.'s  
Orange Empire Dog  
Club, Inc.  
Rotary Club of Moreno  
Valley  
Rotary Club of Palm Desert  
Stater Bros. Markets  
Vavrinek, Trine, Day and  
Co., C.P.A.'s  
West San Bernardino  
County Water District

#### **UNIVERSITY ASSOCIATES**

American Association of  
University Women, San  
Gorgonio Branch  
Atkinson, Andelson, Loya,  
Ruud & Romo  
Best, Best & Krieger  
City of Loma Linda  
City of San Bernardino  
Contel of California  
Eadie and Payne, C.P.A.'s  
Ernst & Young  
First Interstate Bank of  
California  
Fredericks Benefits  
Fullerton, Lemann &  
Schaefer  
General Dynamics, Valley  
Systems Division  
General Telephone  
Company  
Greenwood Bail Bonds  
Hayden, Inc.  
Hospitality Dental Group  
Inland Empire Economic  
Council  
Inland Group, Inc.  
ITT Small Business Finance  
Jerseys Pizza  
Johnson & Higgins of  
California  
Ontario Kiwanis Foundation  
Pacfic First Bank  
Paine Webber  
PJHM Architects  
Reid & Hellyer  
Robinson & Cooper  
Insurance Agency  
San Bernardino County  
Administration  
San Bernardino County  
Central  
Credit Union  
San Bernardino Rotary  
Breakfast Club  
San Bernardino Valley  
Association  
of Realtors  
Security Pacific National  
Bank  
Soren, McAdam, Bartells  
C.P.A. Inc.  
Southern California Edison  
Company  
SUNAIR Aluminum  
Corporation  
Swenson Accountancy  
Corporation  
Treadway Enterprises, Inc.

## FOUNDERS CLUB

Arrowhead Home  
Atlantic City Games  
Bench's Custom Painting  
Cooley Ranch Kiwanis Club  
Crest Chevrolet  
Delta Sigma Phi  
Exchange Club of Fontana  
The Hair Forum  
Harich Construction  
Company, Inc.  
Raymond P. Horspool, Jr.,  
C.P.A.  
Inland Theatre League  
Kassel & Kassel Law Corp.  
Ramada Inn  
Redlands Festival Ballet  
Company  
Schweitzer Appraisal  
Southern California  
Silkscreen  
Spellacy & Associates  
Realtors, Inc.  
Subway Sandwiches &  
Salads  
Value Custom Homes  
West End Water Awareness  
Committee  
Wilson Baugh Enterprises

## FRIENDS OF CAL STATE

Alcott Elementary School  
Employees  
Archaeological Survey  
Association  
of Southern California  
Aztec Uniform & Towel  
Rental  
California Baptist  
California Renewable Fuels  
Council  
California Women for  
Agriculture  
City Cleaners  
City of Riverside Public  
Utilities Department  
County of Riverside-Dept.  
of Health  
Deck The Walls  
Department of Water  
Resources  
East Valley Resource  
Conservation District  
Energy Controls & Concepts  
Fiesta Village  
Garments to Go  
Guided Discoveries  
Inland Empire West  
Resource  
Conservation District  
Island Breeze Styling Salon  
It Looks Runs Well  
Knotts Berry Farm  
Metropolitan Water District  
of Southern California  
Mt. San Jacinto Natural  
History Association  
NBS Lowry  
City of Ontario  
Pizza Hut  
Precinct Reporter  
Rim of The World High  
School, Associated  
Student Body

Riverside Museum  
Associates  
S. E. Rykoff & Co.  
San Bernardino County  
Museum  
San Bernardino County  
Regional Parks  
San Bernardino County  
Solid Waste  
Management  
San Bernardino School  
Employees Federal  
Credit Union  
San Bernardino Valley  
Audubon Society  
Scholastic, Inc.  
Sea World of California/  
Busch Enterprises  
Selnate U.S.A. Company  
Sierra Club, San Gorgonio  
Chapter  
Southwest Airlines  
Trees Are For People  
Tribolium Information  
Bulletin  
The Verity Group, Inc.  
Vistanomics, Inc.  
Yucaipa High School  
Student Body

## OTHER FRIENDS

A & D Tailoring &  
Uniforms  
American Anthropological  
Association  
Delmy's Subway  
Radio Shack  
Roy's Donuts  
See's Candies  
Spencer Gifts

## CSUSB CLUBS, DEPARTMENTS AND ORGANIZATIONS

### PRESIDENT'S CIRCLE

Alumni Association  
Associated Students, Inc.

### CUM LAUDE SOCIETY

Hispanic Faculty and Staff  
Association

### UNIVERSITY ASSOCIATES

Housing Office

### FOUNDERS CLUB

Delta Sigma Phi  
Mathematics Dept.  
Players of the Pear Garden  
Sigma Chi  
Tau Kappa Epsilon

### FRIENDS OF CAL STATE

Coyote Bookstore  
Criminal Justice Dept.  
Economics Dept.  
Faculty Senate  
Pi Lambda Theta, Gamma  
Signam Chapter  
Recreational Sports

## CONTRIBUTORS TO THE ENVIRONMENTAL EXPO

Archaeological Survey  
Association of Southern  
California  
Associated Students Inc. of  
CSUSB  
Atlantic Richfield Co.  
California Department of  
Fish and Game  
California Renewable Fuels  
Council  
California Women for  
Agriculture  
City of Loma Linda  
City of Ontario  
City of Riverside Public  
Utilities Dept.  
County of Riverside-Dept.  
of Health  
Department of Water  
Resources  
East Valley Resource  
Conservation District  
East Valley Water District  
Energy Controls & Concepts  
Mary L. Foye  
Guided Discoveries  
Harich Construction  
Company, Inc.  
Inland Empire West  
Resource Conservation  
District  
Caroline C. Kolbert  
Angelos A. Lambis  
Metropolitan Water District  
of Southern California  
Mt. San Jacinto Natural  
History Association  
Dr. Gary A. Negin  
Rail-Cycle  
Riverside Museum  
Associates  
San Bernardino County  
Museum  
San Bernardino County  
Regional Parks  
San Bernardino County  
Solid Waste  
Management  
The San Bernardino County  
Sun  
San Bernardino Valley  
Audubon Society  
San Bernardino Valley  
Municipal Water  
District  
Scholastic, Inc.  
Sea World of California/  
Busch Enterprises  
Sierra Club, San Gorgonio  
Chapter  
Southern California Edison  
Co.  
Southern California Gas Co.  
Dr. Darleen Stoner  
Trees Are For People  
Vistanomics, Inc.  
West San Bernardino  
County Water District  
West End Water Awareness  
Committee

## CORPORATE MATCHING GIFTS

The university thanks  
the individual donors  
who took the time to  
initiate a matching gift,  
and we salute the  
following companies  
whose generous  
matching contributions  
encourage their  
employees to support  
high-quality education  
at Cal State. (Match-  
ing gifts initiated in  
1991-92 but not yet  
received will appear in  
next year's Honor  
Roll.)

Allied Signal for  
James Schutte  
Bechtel for  
William C. Stevenson  
Digital Equipment  
Corporation for  
John Maginnis  
First Interstate Bank of  
California for  
Laura D. Stevenson  
Fluor Corporation for  
C. R. Cooper  
General Dynamics for  
for Elladine M. Foley  
Hughes Aircraft for  
John W. O'Brien  
IBM for  
Trudy A. White  
ICI Americas Inc. for  
Dr. Frank X. Woolard  
IDS Financial Services for  
Paul R. Mata  
McDonnell Douglas for  
Robert G. Kennedy III  
Karl D. Osborn, Sr.  
Occidental Oil & Gas  
Corporation for  
Michael E. Meehl  
Rockwell International for  
Ann Dunbar  
Security Pacific National  
Bank for  
Joan M. Blackman  
J. Willard Monninger  
David C. Stevenson  
Shearson Lehman Hutton for  
John Raymond, Jr.  
SmithKline Beecham for  
Edwin Raffel  
State Farm Companies  
Foundation for  
Robert S. Johnston  
TRW Inc. for  
Edward Bennett  
Ruth M. Colarossi  
Howard B. Grossman  
Bruce Haselman  
Ismael S. Paredes  
Cpt. Gary Seipel  
John M. Thole

John W. Wee  
United Parcel Service for  
Richard A. Clark, Sr.  
Wells Fargo Bank for  
Mitzi W. Wells  
Witco Corp. for  
Roy T. Teramoto

## GIFTS-IN-KIND

Each year Cal State  
receives gifts of  
equipment, books,  
furniture and other  
physical property.  
These special items  
enrich our library and  
art collections,  
enhance faculty  
research and instruc-  
tion, and support  
cultural and recre-  
ational activities. We  
are pleased to recog-  
nize these donors of  
gifts-in-kind during the  
1991-92 fiscal year.

Alfredo's  
Apple Computer, Inc.  
Atlantic City Games  
Baker's Burgers  
Denise Benton  
Dr. Frances F. Berdan  
Dr. Aubrey Bonnett  
Canada's Yogurt  
Coyote Bookstore  
CSUSB Food Services  
CSUSB Housing  
CSUSB Recreational Sports  
Deck the Walls  
Delmy's Subway  
Disneyland  
Dr. Keith S. Dolan  
Doubletree Yogurt  
Dukes-Dukes & Associates,  
Inc.  
Kathryn Ervin  
Fiesta Village  
First American Title  
Insurance Co.  
Louis Fox  
Harriet Gibson  
Dr. Juan Gonzalez  
Dr. Peter Graves  
Kat Grossman  
Pamela Harer  
Edward Harrison  
IBM  
Inland Beverage  
Island Breeze Styling Salon  
Jerseys Pizza  
Dr. Lewis Jones  
Robin Kaplan  
Kendall Copyland  
Dr. Dong Man Kim  
Knott's Berry Farm  
Dr. Robert A. Lee  
Lucy's  
Dr. Norton Marks  
Martin-Marietta Aerospace

McCallum Theatre for the  
Performing Arts  
Jane Matthews  
Taft T. Newman  
Olive Garden  
Dr. Theron Pace  
Paco's Tacos  
Fernando Periera  
Pizza Hut  
Radio Shack  
Redlands Federal Bank  
Dr. Tom M. Rivera  
Rosa Maria's  
The San Bernardino County  
Sun  
Sarah J. Schuster  
See's Candies  
Service America  
Shandin Hills Golf Club  
Dr. Gerald H. Shepard  
Mark Siefert  
Sizzler  
Southwest Airlines  
Spencer Gifts  
Stater Bros. Markets  
Tom Bell Chevrolet  
TRW, Inc.  
Twin Panda  
Viking Tires  
Vision Copy and Gifts

### **MEMORIALS, TRIBUTE AND SPECIAL SCHOLARSHIP GIFTS**

The university gratefully  
acknowledges the  
generosity and thought-  
fulness of these individu-  
als and organizations  
who made special gifts  
in honor of or in memory  
of a friend, colleague or  
family member.

FRANCES LOUISE  
CRUM DAVIDSON  
SCHOLARSHIP  
Dr. & Mrs. James D. Crum

THE FAROUK  
EL-MAHDY  
EL-AHRAF MEMORIAL  
SCHOLARSHIP  
Dr. & Mrs. Amer El-Ahraf

THE MOHAMED AND  
SENEA EL-MAHDY  
EL-AHRAF MEMORIAL  
SCHOLARSHIP  
Dr. & Mrs. Amer El-Ahraf

THE SANDRA  
FREDRIKSEN  
MEMORIAL  
SCHOLARSHIP  
Cynthia R. Preston

THE MICHAEL  
KHOKLOV MEMORIAL  
SCHOLARSHIP  
Rebecca Warren-Marlatt

THE LESLIE HARRIS  
AND BENNET MEYERS  
MEMORIAL  
SCHOLARSHIP  
Marian W. Horine  
Mrs. Bennet H. Meyers  
Mrs. Ben E. Nordman  
Dr. & Mrs. John M. Pfau

THE KIM HUGHES  
MEMORIAL  
SCHOLARSHIP  
Charlotte C. Anthony  
Mr. & Mrs. Joseph Beck  
Kaye L. Boesel  
Dr. & Mrs. Richard  
Botting  
CSUSB Faculty Senate  
CSUSB Mathematics  
Department  
Mr. & Mrs. Richard M.  
Finkbeiner  
Victoria H. Flint  
Richard M. Friedman  
Dr. Joan T. Hallett  
L. R. Hughes  
Lucretia Hughes  
Mr. & Mrs. Roy L.  
Hughes  
Dr. & Mrs. Daniel E.  
Kirk  
Winton Larson  
Dr. H. L. Oerter  
Mr. & Mrs. Donald  
Olson  
Dr. Bill Orr  
Dr. Charles S. Stanton  
Dr. J. Paul Vicknair  
Mr. & Mrs. L. A. White

THE DONALD W.  
JORDAN MEMORIAL  
SCHOLARSHIP  
Mr. & Mrs. Allen B.  
Gresham

THE ARLENE ROBERTS  
MEMORIAL  
SCHOLARSHIP  
Dr. James D. Thomas

THE MAJOR THOMAS  
ZEUGNER MEMORIAL  
SCHOLARSHIP  
Cheryl L. Clark  
Stanley Pryga

THE DR. A. VIVIEN BULL  
SCHOLARSHIP  
Pamela B. Allen  
Thomas A. Atkinson  
Bridgette Barnett  
Carol L. Beck  
Dr. & Mrs. Edward J.  
Bostley  
Vicki A. Buckley  
Dr. A. Vivien Bull  
Ruth E. Burke  
Dr. B. Jill Buroker  
Michele J. Butler  
Robert J. Cassinelli  
A. Ann Clandening  
Sharon R. Cranford  
Dr. & Mrs. James D.  
Crum

Karlene Deranian  
Wilma L. Dougharty  
Angie L. Duran  
Mr. & Mrs. Pero Dzekov  
Karen L. Eastman  
Dr. & Mrs. B. H. Fairchild  
Dr. Susan Finsen  
Lucille C. Gomez  
Mr. Donald C. & Dr.  
Jorun Johns  
Elois P. Johnson  
Mr. & Mrs. Keith R.  
Johnson  
Dr. N. Laura Kamptner  
Dr. & Mrs. Julius D.  
Kaplan  
Dr. Adria F. Klein  
Mr. & Mrs. Paul J. Knuth  
Joanne V. Lavender  
Dr. Marsha B. Liss  
Dr. Lorelee MacPike  
Dr. & Mrs. James M.  
Mehegan  
Elinore H. Partridge  
Dr. Thomas J. Pierce  
Lupita R. Pisalyaput  
Dian J. Pizurie  
Mattie S. Popineau  
Dr. Amanda Sue Rudisill  
Dr. Treadwell Ruml II  
Mr. & Mrs. William N.  
Samuel, Jr.  
M. M. Seaton  
Dorothy K. Simcoe  
Victor Zupancich

THE JOHN WINN  
KENNEDY, SR.  
SCHOLARSHIP  
Hon. & Mrs. John W.  
Kennedy, Jr.  
Mr. & Mrs. John W.  
Kennedy, Sr.

THE SHELBY  
OBERSHAW TEACHER  
EDUCATION  
SCHOLARSHIP  
Gayle Fichtner  
Ida J. Haughn  
Shelby J. Obershaw  
Cheryl L. Peil

THE JOHN RAYMOND  
FAMILY ECONOMICS  
SCHOLARSHIP  
Mr. & Mrs. John  
Raymond, Jr.  
Shearson Lehman  
Hutton

OTHER GIFTS IN  
MEMORIAM

In Memory of Mary Doyle  
and Helen Warehall  
Colleen Corbin  
Dr. Peter J. Holliday  
Richard Johnston  
Dr. Julius Kaplan  
Sant Subagh K. Khalsa  
Dr. Sally Kovach  
Shwu-Ting Lee  
Roger and Kathy Lintault  
Don Woodford

In Memory of Timothy  
Gourley  
Mr. & Mrs. Malcolm  
Harbauer

### **THE LEGACY SOCIETY**

Created to recognize  
individuals who have  
made special commit-  
ments of support to the  
university, the Legacy  
Society honors our  
friends who, by  
naming the CSUSB  
Foundation in a will,  
trust or insurance  
arrangement, will  
provide future enrich-  
ment for Cal State's  
programs. We express  
our heartfelt thanks to  
the following friends  
for their support of Cal  
State in this way.

Lawrence Daniels  
Dr. & Mrs. Anthony H.  
Evans  
Darlene Johnson  
James N. Kennedy  
Dr. Adria Klein  
Debby Polen  
Stephen Prouty  
Floyd Rasmussen  
Dr. Judith & Mr. Glenn  
Rymer

### **FRIENDS OF THE GALLERY**

For their generous  
support in promoting  
the visual arts at Cal  
State and in our  
neighboring communi-  
ties, we extend a very  
sincere thanks to our  
Friends of the Gallery.

Mr. & Mrs. Michael Benton  
Sandie Butler  
Dr. & Mrs. J. Milton Clark  
Karen Eastman  
Carolyn W. Engel  
Dr. & Mrs. Donald J.  
Feldman  
Dr. Catherine Gannon  
Dr. & Mrs. Paul G. Godfrey  
Mr. & Mrs. Howard  
Grossman  
Mr. & Mrs. Neal S. Larson  
Roger & Katherine Lintault  
Christenne M. Moon  
Anne E. Muscatelli  
Dr. Edward A. Nelson  
Glenn Rymer  
Candice K. Salser

Mignon M. Schweitzer  
Mr. & Mrs. J. Gill Snyder  
Michael D. Steadman  
Miryana Szabo  
Patricia Terry  
Ione M. West

### **LIBRARY ASSOCIATES**

We are most grateful to  
the university's friends  
whose gifts to the Pfau  
Library help enhance  
learning opportunities  
for our students and  
faculty by strengthen-  
ing our collections and  
sponsoring distin-  
guished guest speakers.

#### **LIFE MEMBERS**

Dr. & Mrs. William Aguilar  
Mr. & Mrs. James  
Alexander  
Janet Allen  
Bennett Enterprises  
Mr. & Mrs. Marty  
Bloomberg  
Frederick Blum  
Mr. & Mrs. George Bohn  
Mr. & Mrs. Michael Burgess  
Beatriz Brusselle  
Dr. Theodore Cohen  
Dr. & Mrs. William  
Coleman  
Gary Cosand  
Terri De Ment  
Dr. & Mrs. Anthony H.  
Evans  
Samuel Gabriel  
Dr. Catherine Gannon  
Dr. & Mrs. Bruce Golden  
Dr. & Mrs. Bernie Goler  
Dr. Carol Goss  
Mr. & Mrs. Larry Harvey  
Raymond Hedstrom  
Dr. & Mrs. Abram Hodes  
Beryl Holcomb  
Dr. & Mrs. Julius Kaplan  
Mary Lewis  
Mr. & Mrs. Arthur Nelson  
Michael Nelson  
Walter Nunes  
Mr. & Mrs. Charles  
Obershaw  
Dr. & Mrs. John Pfau  
Mr. & Mrs. Louis Press  
James Ragan  
Johnnie Ralph  
Joy Risser  
Dr. & Mrs. Donald Rose  
Dr. & Mrs. Stanley Samuels  
Mark Seifert  
Mrs. Robert Smith  
Dr. & Mrs. William Soltz  
Nancy Stratton  
Dr. James Thomas  
Mr. & Mrs. Michael  
Thompson  
Barbara Tudor  
Dominic Tudor  
Mr. & Mrs. Arthur Varden

Mr. & Mrs. E. George Webster  
Mr. & Mrs. Harold Young

## **CSUSB ATHLETIC ASSOCIATION**

The contributions of the following friends make it possible for the university to compete at the NCAA Division II level. For their generous and enthusiastic support of the Cal State Coyotes, we extend a very special thanks to our CSUSB Athletic Association members.

A & D Tailoring & Uniforms  
Mr. & David Almquist  
Mr. & Mrs. Allen Andrews  
Arrowhead Home  
Atkinson, Andelson, Loya, Ruud & Romo  
Aztec Uniform & Towel Rental  
Mr. & Mrs. Orval Badger  
Jo M. Barbo  
Mr. & Mrs. Jim Barlau  
Dr. & Mrs. Joe Bas  
Mr. & Mrs. Harry E. Baumann  
Mr. & Mrs. Joshua Beckley  
Mr. & Mrs. Ronald E. Beers  
Bench's Custom Painting  
Janette Bidart  
Jacquelyn J. Billaud  
Jimmy L. Braddock  
Sharon E. Britt  
Mr. & Mrs. David G. Buchanan  
Carousel Mall Merchants Association  
Dr. & Mrs. Mark J. Carpenter  
George B. Casey  
Pete Cherniss  
City Cleaners  
Mr. & Mrs. Bruce Clatworthy  
Grant Clatworthy  
Wayne Clatworthy  
Mary C. Colacurcio  
Andrew Copeland  
Sharron J. Cordaro  
Crest Chevrolet  
Colleen Cross  
Crown Printers  
Alan H. Dale  
Dean Witter Reynolds Inc.  
Mr. & Mrs. Richard Delmonico  
Delta Sigma Phi  
Mr. & Mrs. David P. DeMauro  
Dr. & Mrs. Anthony H. Evans  
Exchange Club of Fontana

Sharon A. Ferguson  
Angelina Figueroa  
Joanne Fluke  
Mr. & Mrs. Larry Franklin  
Friends of Golf Inc.  
Mr. & Mrs. Frank Frisch  
Fullerton, Lemann & Schaefer  
Susan N. Garcia  
Ruth Gardner  
Garments to Go  
General Telephone Co.  
Karen Gilyard  
Dr. Morley Glickin  
Joseph Gonzalez  
Dr. Juan C. Gonzalez and Irene Hoffmann  
Mr. & Mrs. Michael Gordon  
Mr. & Ms. Londell Graves  
Frank L. Gray  
The Hair Forum  
Mr. & Mrs. Bradley C. Hall  
Norman L. Hanover  
Su Hansberger  
James L. Hansen  
Mr. & Mrs. Rick Hansen  
Hazel N. Harden  
Edward W. Harrison  
Mr. & Mrs. Charles M. Healy  
Peggy Heeb-Woodhouse  
Mr. & Mrs. Donald R. Hellon  
Robb D. Hendrix  
Mr. & Mrs. Fred L. Hinton  
Mr. & Mrs. Patrick D. Hipskind  
Holiday Oldsmobile - Mazda  
Raymond P. Horspool, Jr., C.P.A.  
Mr. & Mrs. Burl Hunt  
Mr. & Mrs. John L. Ibbetson  
Mr. & Mrs. Donald T. Irving  
Tom Irwin  
It Looks Runs Well  
Mr. & Mrs. Nathan Jackson  
Nova Jamer  
Mr. & Mrs. Jesse J. James  
Harriet I. Jason  
Jerseys Pizza  
Dr. & Mrs. L. Lynn Judd  
Constance R. Jury  
Mr. & Mrs. Victor P. Keaton  
Kiwanis Club of San Bernardino  
Allyn H. Kruse  
Mr. & Mrs. Larry Lacey  
Dr. Kenneth E. Lane  
Pamela D. Langford  
Mr. & Mrs. Steven M. Lipan  
Mr. & Mrs. Daniel L. Lloyd  
Peggy McGee  
Mr. & Mrs. Don McKenzie  
Mr. & Mrs. Chris McNamara  
B. Gregory McPhate  
Ruth Montgomery  
Mr. & Mrs. William Morris, Jr.  
Cheryl A. Mosher  
Mr. & Mrs. Richard A. Mosher  
John M. Naughton  
Mr. & Mrs. John W. O'Brien  
Ontario Kiwanis Foundation

Gary W. Osborne  
Dr. Thomas J. Pierce  
PJHM Architects  
Mr. & Mrs. Gerald M. Plummer  
Phila A. Plummer  
Precinct Reporter  
Cynthia Pringle  
Mr. & Mrs. Robert S. Putnam  
Nancy C. Rangel  
Mr. & Mrs. Roger Redel  
Harry Rheubottom, Sr.  
Mr. & Mrs. Robert Rickli  
Robert P. Roark  
Robinson & Cooper Insurance Agency  
Diana Z. Rodriguez  
Mr. & Mrs. Mario Rodriguez  
Mr. & Mrs. Peter R. Rosati  
Roy's Donuts  
Mr. & Mrs. Thomas J. Ruvolo  
Dr. Judith & Mr. Glenn Rymer  
S. E. Rykoff & Co.  
Alfred Saavedra  
San Bernardino Valley Businessmen for Athletics  
Mr. & Mrs. Don Saponetti  
Craig Schwartz  
Mr. & Mrs. James F. Schwartz  
Schweitzer Appraisal  
Margaret A. Shearer  
Abe Simon  
Nancy P. Simpson  
Mr. & Mrs. Ronald G. Skipper  
Beverly A. Smith  
J. C. Smith  
Carolyn R. Smits  
Southern California Silkscreen  
Sparvan Engineers  
Spellacy & Associates Realtors, Inc.  
Kathy Stein  
Dr. & Mrs. David O. Stine  
Mr. & Mrs. Charles Strain  
Sue Strain  
Mr. & Mrs. Ralph Strakal  
Dr. & Mrs. William R. Sturlaugson  
Subway Sandwiches & Salads  
Mr. & Mrs. David L. Suenram  
Gary D. Sveum  
Tau Kappa Epsilon  
Mr. & Mrs. Fury G. Tenace  
Mr. & Mrs. Michael Tinker  
Mr. & Mrs. Bill Tobia  
Mr. & Mrs. Daniel R. Tregarthen  
TRW, Inc.  
Value Custom Homes  
Mr. & Mrs. Bruce D. Varner  
Mr. & Mrs. Somphon Watanathai  
Stephen C. Watt  
Mr. & Mrs. John W. Wee  
Mr. & Mrs. Dale West

Dr. Peter A. Wilson & Linda Rogers  
Mr. & Mrs. John P. Wood  
Mr. & Mrs. Max R. Wozencraft  
Dr. Jenny Zorn

## **PLAYERS OF THE PEAR GARDEN**

Members of the Players of the Pear Garden merit special recognition for their support in enriching the university's performing arts programs.

### **BENEFACTORS**

Danny Bilson  
Neal, Helen & Carol Hanzlik  
Dr. W. Benson and Mrs. Pamela Harer  
Paul DeMeo

### **SPONSORS**

Sarah M. Balmer  
Mr. & Mrs. Caywood V. Borrer  
Dr. & Mrs. Anthony H. Evans  
Dr. & Mrs. Luis Francisco  
Mrs. Ernest & Dorothy Garcia  
Dr. & Mrs. Dennis Hefner  
Mr. & Mrs. David Kennedy  
Mr. & Mrs. William E. Leonard  
Dr. & Mrs. Fook F. Liu  
Mr. & Mrs. Art McKinster  
Dr. & Mrs. Art Moorefield  
Mr. & Mrs. W. A. Newman  
Dr. & Mrs. Gerald H. Shepard  
Mr. & Mrs. G. Slater  
Mr. & Mrs. Bobby Vincent  
Mr. & Mrs. Paul Anderson Wilson  
Dr. & Mrs. Donald C. Woods

### **PATRONS**

Alcott Elementary School Employees  
Louise Marie Connal  
Dr. & Mrs. James D. Crum  
Mr. & Mrs. Charles Donovan  
Dr. & Mrs. Patrick Garcia  
Dr. Craig Henderson & Barry Morgan  
Dr. & Mrs. Brij B. Khare  
Ian Ocasio  
Mr. & Mrs. Charles Richards  
Dr. & Mrs. James R. Savage  
Mr. & Mrs. Sam Sill  
Brills Shoes  
Mitchell K. Slagerman  
Dr. Rita Sturgeon  
Dr. Richard Switzer  
Dr. Daniel S. Whitaker

## **CSUSB AFFIRM**

(Alumni, Faculty & Friends for the Illumination & Recognition of Music)

We extend a sincere thanks to the following music lovers who are the first members of AFFIRM.

Mr. & Mrs. Albert Andon  
Dr. & Mrs. Edward Bostley  
Dr. & Mrs. James Crum  
Mr. & Mrs. Donald Day  
Mr. & Mrs. Charles P. Donovan  
Dr. Eugene Dybowski  
Elvera Erickson  
President & Mrs. Anthony H. Evans  
Frances L. Feldman  
Mr. & Mrs. Mark L. Fife  
Dr. & Mrs. Loren Filbeck  
C. R. Freidel  
Dr. Catherine Gannon  
Harriet P. Gibson  
Dr. & Mrs. Dennis Hefner  
Dr. William & Dean Beverly Hendricks  
Lt. Col. & Mrs. Walter Huff  
Dr. & Mrs. Julius Kaplan  
Harry R. Lambert  
Katherine & Roger Lintault  
Mr. & Mrs. Danny Manolis  
Dr. & Mrs. Larry McFatter  
Ann Moore  
Mr. & Mrs. William A. Newman  
Ian Ocasio  
Jana C. Ondrechen-Wible  
Mrs. Andrew G. Robertson  
Mignon M. Schweitzer  
Gertrude Storm  
Dr. & Mrs. Joseph Thomas

## **VOLUNTEERS**

Our warm and abundant thanks to our many friends who shared their time, talents and ideas so freely and generously throughout the past year. Their exemplary commitment and active participation in the life of the university make a profound difference on our campus.

### **UNIVERSITY ADVISORY BOARD**

Nicholas Coussoulis  
Coussoulis Development Company  
Karen Craig  
San Bernardino High School



Richard F. Crail  
Lockheed Commercial  
Aircraft Center  
Mary Drury  
Sunrise Company  
Vivian Nash Dukes  
Dukes-Dukes &  
Associates  
Don Ecker, Ernst & Young  
Dr. Luis S. Gomez  
Crafton Hills College  
Don Iman, DDS  
Darlene Johnson  
The Jordan Company  
Milton Johnson  
Home Lumber Company  
Dr. Taewoong Kim  
James Mulkey  
Pfizer, Inc.  
Gerald Newcombe  
Richard Oliphant  
Richard R. Oliphant  
& Associates  
Kenneth N. Patterson  
Eadie & Payne  
Robert W. Percy, DDS  
James Robinson  
Riverside National Bank  
Valerie Romero  
Elise Traynum  
Best, Best and Krieger  
Bruce Varner  
Gresham, Varner,  
Savage, Nolan and  
Tilden  
Lawrence J. Winking  
Attorney at Law

**BOARD OF DIRECTORS  
OF THE FOUNDATION  
FOR CALIFORNIA  
STATE UNIVERSITY,  
SAN BERNARDINO**

Glenda Bayless  
Bayless Accounting  
Agency  
Lawrence L. Daniels  
Ken Foshee  
GTE California  
Robert V. Fullerton  
Fullerton, Lemann &  
Schaefer  
Wilfred Heitritter  
McGladrey and Pullen  
Sheri Major  
CSUSB Associated  
Students  
Denny Shorett  
Crown Printers  
William Tiger  
Robinson & Cooper  
Insurance Agency

**ALUMNI ASSOCIATION  
BOARD OF DIRECTORS**

Terry Adame  
David Amori  
Donald Beard  
Lawrence Buck  
William Christelman  
Frank Colby  
Dianne Huppman  
James Kennedy  
Marcia Lentz

Paul Mata  
Terry May  
Dr. Linda Norman  
Lee Ann Overstreet  
James Penman

**BOARD OF  
COUNCILLORS**

Sally Anderson  
Ernst & Young  
William J. Anthony  
Inland Empire Business  
Journal  
Leona Aronoff  
Gate City Beverage  
Distributors  
Don Baker  
Stater Bros. Markets  
Pam Ball  
Digital Equipment  
Corporation  
Judi Battey  
Southern California  
Gas Co.  
Glenda Bayless  
Bayless Accounting  
Agency  
Howard Bland  
KPMG Peat Marwick  
Bill Blatnick  
Jack Brown  
Stater Bros. Markets  
Joanna R. Bruno  
ITT Small Business  
Finance  
Larry Buck  
CSUSB Alumni  
Association  
Sam Catalano  
Central City Company  
Gary L. Christenson  
Soren McAdam Bartells  
Nicholas J. Coussoulis  
Coussoulis Development  
Cliff Cummings  
Chuck Obershaw Toyota  
Roberta A. Davis  
Johnson & Higgins of  
California  
Don Driftmier  
Vavrinek Trine  
Day & Co.  
Mark C. Edwards  
Reid & Hellyer  
Ken Foshee  
GTE California  
Robert A. Fredericks  
Fredericks Benefits  
C. Charlie Gardner  
C&R Computer  
Softward Associates,  
Inc.  
Michael Gardner  
Southern California  
Edison  
David Garthwaite  
Sunair Aluminum  
Corporation  
Terry Gray  
Union Bank  
Diana Harris  
Riverside Community  
College

Sam Henley  
San Bernardino Valley  
Association of Realtors  
John Hernandez  
Wells Fargo Bank  
Jim Hlawek  
San Bernardino County  
Personnel  
Charles J. Inacker  
Riverside Community  
College  
Ed Jacobsen  
Doris Jaynes  
Pacific First Bank  
Ray Lancy,  
Price Waterhouse  
Rod LeMond  
McGladrey & Pullen,  
C.P.A.s  
Linda Lingo  
Pfizer, Inc.  
Jeremiah Lloyd  
Security Pacific Bank  
Mike Lucero  
General Dynamics  
Dennis Mansfield  
Hydrogro  
Wes McDaniel  
San Bernardino  
Associated Governments  
James Miles  
Continental Telephone  
of California  
Gerald M. Newcombe  
Dean Norling  
Swenson Corp, C.P.A.s  
Chuck Obershaw  
Chuck Obershaw Toyota  
Tom Pilkington  
Entre Computer Center  
Steve PonTell  
Inland Empire Economic  
Council  
John F. Prentice  
Eadie & Payne, C.P.A.s  
Ed Ridder  
TRW Ballistic Missiles  
Div.  
Al Schwartz  
Chicago Title  
Charles Seward  
Inland Business Media  
Group, Inc.  
Barbara H. Sheldon  
Riverside Development  
Agency  
Ed Slaughter  
Southern Cal Capital,  
Inc.  
Clark N. Snyder  
Nordskog Industries, Inc.  
John Steinbeck  
Allen, Haight &  
Schurawel  
Timothy Steinhaus  
San Bernardino City  
Economic Development  
Agency  
Karen Taylor  
First Interstate Bank  
Robert Temple  
San Bernardino  
Community College

John L. Treadway  
Treadway Enterprises,  
Inc.  
Sid Ward  
Computer  
Communications  
International  
E. George Webster  
Eugene Wood  
E. H. Wood &  
Associates  
Jim Wright  
Hayden Inc.

**CSUSB ATHLETIC  
ASSOCIATION  
EXECUTIVE  
COMMITTEE**

Max Alonso  
First American Title  
Insurance Co.  
Carl Dameron  
Dukes-Dukes &  
Associates  
David Faust  
Massachusetts Mutual  
Insurance  
Karen Gilyard  
Atkinson, Andelson,  
Loya, Rudd & Romo  
Glenn Rymer  
First Presbyterian  
Church  
Jon Schultz  
Holiday  
Oldsmobile-Mazda  
J. Gill Snyder  
First Federal Savings  
& Loan  
Frances Webb  
George H. Schnarre, Inc.  
Greg Webb  
George H. Schnarre, Inc.  
David Widor  
Jerseys Pizza  
John Wood  
Beaumont Unified  
School District  
Mike Zingelmann  
Paine Webber

**LIBRARY ASSOCIATES  
EXECUTIVE  
COMMITTEE**

Betty Anderson  
Dr. William Coleman  
Frances Coles  
Larry Harvey  
Penny Holcomb  
Tony Longhetti  
Chuck Palmer  
Thelma Press  
Harry Rheubottom  
Elisabeth Ryland  
Walter Schuiling  
Ralph Velasquez  
E. George Webster  
Dave Wood

**PFAU LIBRARY  
ADDITION  
SUPPORTERS (PALS)**

Dr. Ernest Garcia  
Penny Holcomb

Dr. Julius Kaplan  
Bill Lemann  
Thelma Press

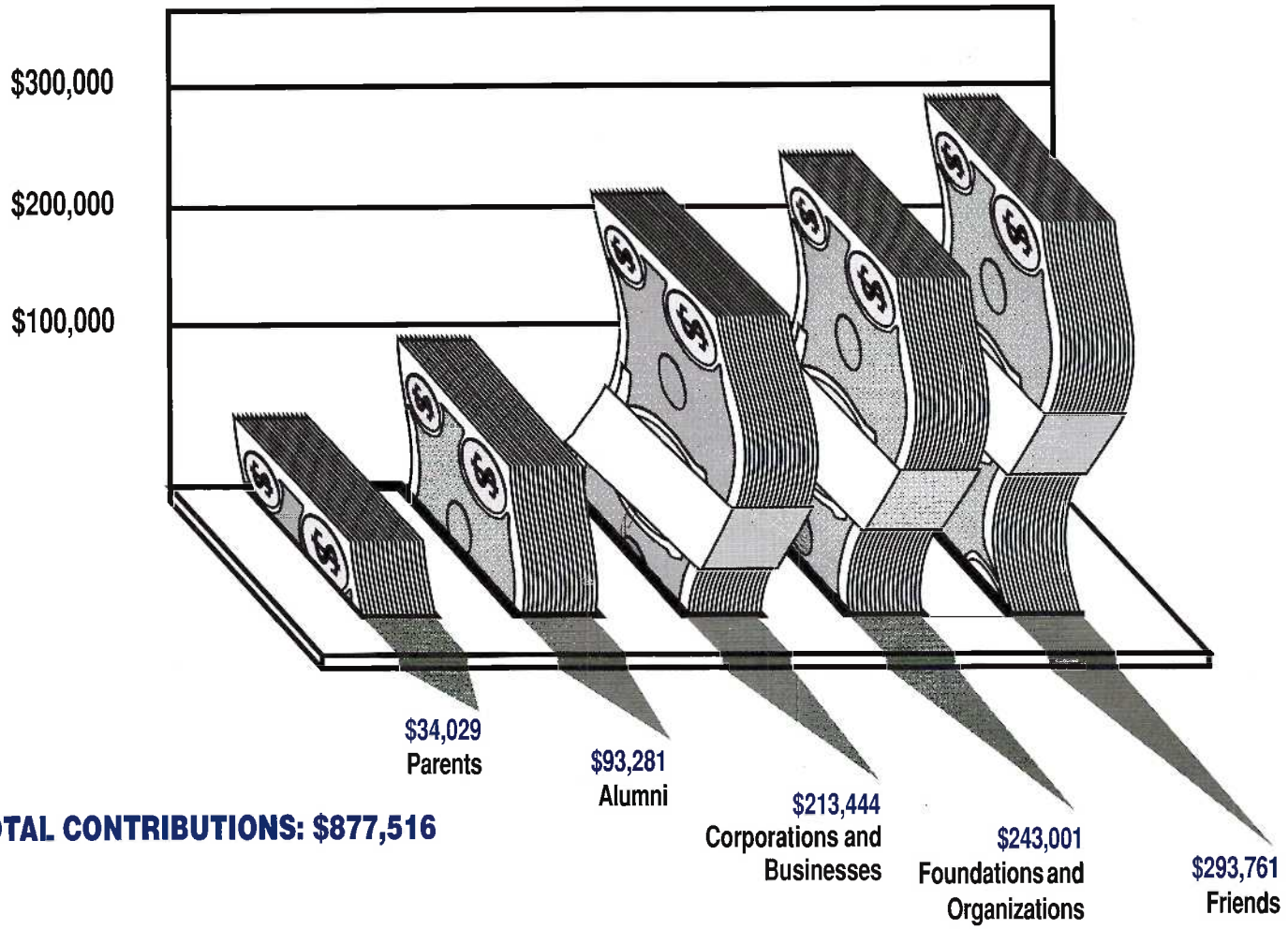
**COACHELLA VALLEY  
CENTER ADVISORY  
BOARD**

Paul Ames  
The Ames Group  
Rolf G. Arnhyrn  
The Honorable Sonny Bono,  
Mayor  
City of Palm Springs  
Steve Brummel  
Verde-Mar Limited  
Ralph Hitchcock  
Southern California  
Edison Co.  
Mark Homme  
Attorney at Law  
Sabby Jonathon  
Jonathon & Associates,  
Inc.  
F. T. Kieley III  
Curtis-Kieley General  
Insurance  
Ernie Moreno  
General Telephone  
Company  
Manuel Sanchez  
JMS Engineering  
Dave Tschopp  
First Bank of Palm  
Desert  
Betty Williams  
Williams Development  
Corp.

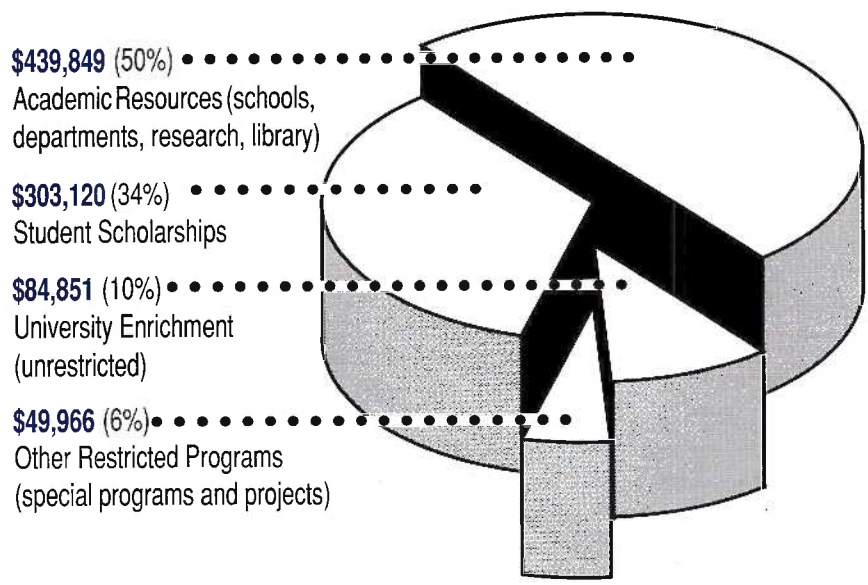
**VOLUNTEERS FOR  
SPECIAL PROGRAMS**

David Amori  
Linda Amori  
Don Beard  
Mary Frances Breitenstein  
Larry Buck  
Bill Christelman  
Frank Colby  
Carol Dey  
Cheryl Flowers  
Bill Frazier  
Karin Grance  
Charlie Horinouchi  
Jamie Jorgenson  
Kenny Jorgenson  
Jim Kennedy  
Cheryl Koleszar  
Marcia Lentz  
Karen Lincoln  
Paul Mata  
Terry May  
Ken Miller

# WHO GAVE HOW MUCH, 1991-92



# HOW 1991-92 GIFT DOLLARS WERE DESIGNATED



### SUPPORT GROUP MEMBERSHIP IS DETERMINED AS FOLLOWS:

- |                                                          |                                                      |
|----------------------------------------------------------|------------------------------------------------------|
| <b>PRESIDENT'S CIRCLE</b><br>Gifts of \$1,000 or greater | <b>FOUNDER'S CLUB</b><br>Gifts of \$100 to \$249     |
| <b>CUM LAUDE SOCIETY</b><br>Gifts of \$500 to \$999      | <b>FRIENDS OF CAL STATE</b><br>Gifts of \$25 to \$99 |
| <b>UNIVERSITY ASSOCIATES</b><br>Gifts of \$250 to \$499  |                                                      |

California State University, San Bernardino is proud of the interest and support of each individual and organization whose name appears in this Honor Roll of Donors. Every effort has been made to properly acknowledge all gifts made to the university in 1991-92, but in a listing of this size inadvertent oversights may have occurred. If we have failed to recognize anyone, we apologize and ask you to please notify the office of development so that we may correct our records. Any corrections to the Honor Roll will appear in the winter issue of *Cal State, San Bernardino*.

**Office of Development**  
**California State University,**  
**San Bernardino**  
**5500 University Parkway**  
**San Bernardino, CA 92407-2397**  
**(714) 880-5006**



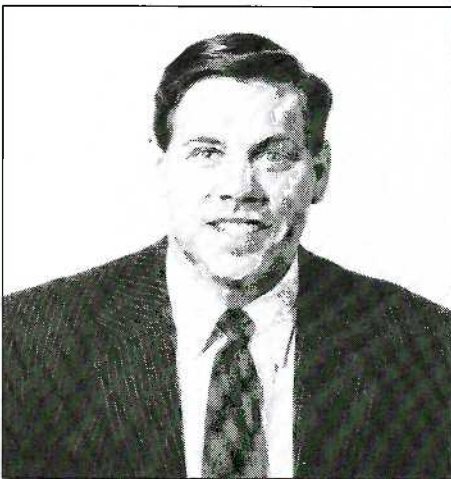
# ATHLETICS ARENA NAMED IN HONOR OF PARENTS OF NICHOLAS COUSSOULIS

A 5,000-seat indoor facility for the future Health and Physical Education Complex at Cal State will be named in honor of the parents of a long-time university supporter, Nicholas Coussoulis. The James and Arianthi Coussoulis Arena is made possible by a \$500,000 contribution from their son, who is a 1975 graduate of Cal State. Founder and president of the Coussoulis Development Co. in San Bernardino, "Nick has earned a place as one of the leading business people and philanthropists of our region," says Vice President Judith Rymer (University Relations). A long-time friend of higher education, Coussoulis has served on the Board of Councillors for Cal State's School of Business and Public Administration since 1983, and in 1991 he was appointed to a second four-year term on the University Advisory Board. For years he has provided scholarships for underrepresented minority students at Cal State.



The namesakes of Arianthi and James Coussoulis (couple at right) will be borne on the university's athletic arena that will break ground this fall. The naming is made possible by alumnus Nicholas and his wife, Tina (at left).

## UNIVERSITY FUND RAISING ACCELERATES WITH NEW DIRECTOR OF MAJOR GIFTS



Stephen D. Christensen

Stephen D. Christensen, former vice president and senior fund raising consultant for the Robert B. Sharp Co., Inc., joined Cal State July 13 as the director of major gifts. This new post was created to build upon the university's Partnership

2000 effort (see accompanying story). Christensen says his initial efforts will focus on developing a number of capital campaigns for the academic schools centering on the solicitation of major contributions and multi-year pledges, endowments and estate planning gifts.

A seasoned fund raising executive, Christensen brings extensive professional experience to his new position. He is the former campaign director for Cal State, Fullerton, and also served as the director of major gifts at the University of California, Irvine.

## PRECEDENT-SETTING PARTNERSHIP 2000 CAMPAIGN BUILDS CAL STATE PROGRAMS, FACILITIES FOR THE 21ST CENTURY

Initiated in the spring of 1992, Partnership 2000 is an unprecedented public-private partnership between Cal State, San Bernardino and the community. It is a decade-long, major multi-million dollar fund raising campaign for the university, focusing on generating gifts and pledges necessary to allow the campus to meet the immediate and growing needs of our students, faculty, alumni and the community-at-large. As the campus's first major capital campaign, Partnership 2000 initially is focused on six priority areas: The Pfau Library addition and renovation, the School of Business and Information Science, the

Health and Physical Education Complex, and new buildings for visual arts and the schools of education and social and behavioral sciences.

With shrinking state funding, the university is seeking partnerships and significant financial support from individuals, corporations, foundations, and organizations whose memberships consist of alumni, business and community leaders. Guided by the unprecedented expansion of facilities on campus, Partnership 2000 will influence the growth and development of virtually every facet of the university's intellectual life and student nurturance over the next several years.





# STATE ASSEMBLYMAN PAUL WOODRUFF DISTINGUISHED ALUMNUS THIS YEAR

State Assemblyman Paul Woodruff, B.A. 1983 political science, was given the Distinguished Alumni Award by the Alumni Association before 17,000 guests and graduates at the Commencement ceremony on June 13.

After attending local primary and secondary schools, Woodruff was active in student affairs at Cal State. In his freshman year here, he organized a women's conference that featured such notables as Gloria Allred. He also helped run the student Model Congress, organized the Political Science Council and interned for former State Assemblyman Bill Leonard.

As a legislator, Woodruff is the chairman of the Republican Assembly Caucus, serves on the Higher Education Committee, the Assembly Ways and Means Committee and the Committee on Televising the Legislature.

A member of the Alumni Association, Woodruff returns to campus frequently to speak to political science classes. Two of his former professors offered his name in nomination: Dr. Carol Goss and Dr. Jim Thomas.

## JOIN THE ALUMNI ASSOCIATION AND HELP OUR CURRENT STUDENTS!

The CSUSB Alumni Association needs you. In return you can obtain health, dental, and vision insurance, travel program discounts, as well as many other discounts on California attractions, an MBNA credit card that helps Cal State every time you use it, free use of most of the CSU libraries, and discounts at performing arts productions. Your membership will support many programs such as scholarships, the Emergency Student Loan fund, partial funding of the campus magazine, Homecoming activities, and the Distinguished Alumni Award.

# '92 GRADUATES SALUTED, REMEMBERED

The Alumni Affairs Office is pleased to welcome more than 3100 new alumni to our family of degree holders. That's how many students received degrees within the past year. Of those eligible to attend graduation ceremonies (2554 receiving bachelor's degrees and 622 master's degrees) approximately 1700 participated in the June ceremony.

Every effort is made to produce a Commencement program that lists correctly the names and honors accorded to every graduate, but despite the care taken a few students were left out of the program entirely or were not listed properly.

To the following we extend our apologies and our sincere congratulations on their accomplishment:

- Heather Gill,**  
Physical Education,  
Department Honors
- Anna Guthrie,**  
Liberal Studies,  
Highest Honors
- Carol Halliman,**  
Social Science,  
Honors, Phi Kappa Phi

## TELL-US MORE ABOUT YOURSELF

Name \_\_\_\_\_

Address \_\_\_\_\_

City \_\_\_\_\_

State \_\_\_\_\_ Zip \_\_\_\_\_

Home Phone (\_\_\_\_\_) \_\_\_\_\_

Bus. Phone (\_\_\_\_\_) \_\_\_\_\_

Soc. Sec. No. \_\_\_\_\_

Year of Graduation \_\_\_\_\_ Degree \_\_\_\_\_

Major \_\_\_\_\_

Spouse \_\_\_\_\_

Is Spouse a CSUSB Grad?  Yes  No

If yes: Year of Graduation \_\_\_\_\_

Degree \_\_\_\_\_ Major \_\_\_\_\_

Information that you would like to share in Cal State magazine. (Write here or attach additional page.)

(Note: Birth and wedding announcements require dates and names of all concerned for a separate listing.)

\_\_\_\_\_  
\_\_\_\_\_  
\_\_\_\_\_  
\_\_\_\_\_

9/92

## CSUSB ALUMNI ASSOCIATION MEMBERSHIP FORM

Name \_\_\_\_\_

Former Name (if applicable) \_\_\_\_\_

City, State, Zip \_\_\_\_\_

Home Phone: \_\_\_\_\_ Business Phone: \_\_\_\_\_

Social Security # \_\_\_\_\_

Year of degree and major: \_\_\_\_\_

- Payment Enclosed
  - \$14. New Graduates (1992)
  - \$20 Single Annual
  - \$30 Double Annual (both are alumni)
  - \$500 Single Lifetime
  - \$750 Double Lifetime
  - Please let me know how I can help at Commencement on June 12, 1993.
- Charge my: \_\_\_\_\_  
 Visa # \_\_\_\_\_  
 Mastercard # \_\_\_\_\_  
 Exp. Date: \_\_\_\_\_  
 Signature \_\_\_\_\_

Make your check payable to the CSUSB Alumni Association, California State University, San Bernardino, 5500 University Parkway, San Bernardino, CA 92407-2397. Thank you for helping our students.



# ALUMNI LEADERS RECOGNIZED

The Board of Directors is happy to welcome Hank Ortiz (B.A. chemistry, '84), a new member to the Board. Hank was elected to a two-year term and will serve as a director. Officers for the 1992-94 period are:

- President:** Jim Kennedy
- Vice President:** Terry May
- Treasurer:** Ken Miller
- Directors:** Terry Adame  
David Amori  
Bill Christelman  
Frank Colby  
Dianne Huppman  
Hank Ortiz


**Serving as liaison for the chapters are:**

- Donald Beard,  
Education
- Larry Buck,  
Business & Public  
Administration
- Marcia Lentz,  
Nursing
- Paul Mata,  
Hispanic

**Faculty Representative:**

- Dr. Mary Andes,  
School of Education.

# D.C. ALUMNI SHARE PRIDE IN PLAY AWARD

All alumni in the Washington, D.C.. area were invited to accept complimentary tickets for the April 27, 1992, performance of "A Warring Absence" at the Kennedy Center. This prize-winning play, written and co-starred in by alumna Jody Duncan, was selected from more than 800 entries in the American College Theatre Festival competition. Doug Buckhout (B.A. theatre arts, 1979) co-starred as poet Dylan Thomas. Cal State's president, Dr. Anthony H. Evans, and other members of the Cal State community were happy to welcome alumni Gayle Rogers, Howard Sulkin, Shannon Goetsch, Jim Dempsey, Kathy Kannenberg, Thomas Martinez, Susan Till and Lisa Knight. 

FINANCIAL OPPORTUNITIES...

# JOIN

SAN BERNARDINO COUNTY  
CENTRAL CREDIT UNION

It's not often a new financial opportunity comes your way.

For CSUSB Alumni, it's here.

You can join the San Bernardino County Central Credit Union and take advantage of a safe, secure financial institution.

As a financial cooperative, owned and operated by its members, we are unique in the financial world. So take advantage of a full range of products and services available for members only.

The choice is yours, join today.





1974

**Eileen Kaufman**, B.A. sociology, credential '79, and her husband, the Honorable Marcus M. Kaufman, have given a one-third interest in real estate in Corona del Mar valued at more than \$600,000 to the USC Law Center, augmenting the Kaufman Scholarship Fund.

1975

**Ramona H. (Pitkin) Thomas**, B.A. administration, is the chief financial officer for California Medical Review, Inc., in San Francisco and has over 20 years experience in all areas of government contracting and finance.

1978

**Alexander H. "Mac" McHardy**, B.A. administration, and his wife Susan, are both real estate brokers at Spencer Real Estate in Big Bear.



Kathleen Millholland

**Kathleen Millholland**, M.A. education, a counselor at Perris High School, was elected president of the California School Counselors Association.

1980

**Joe Desist**, B.A. political science, M.A. education '83, is running for the 63rd Assembly District as the first Green Party candidate in San Bernardino. Joe is challenging Assemblyman Jim Brulte (Rancho Cucamonga). A resource specialist for the Fontana Unified School District, Joe is also a part-time teacher at San Bernardino Valley Community College.

**Dr. D. Steven Meyering**, B.A. chemistry, has been named chief of

Medicine at Parkview Community Hospital in Riverside where he has been in private practice of internal medicine since 1987.



James Carter

1981

"Education is the keyword for success in the James Carter family"—so begins the May 7 *San Bernardino County Sun* Family Page article that features the Carter family: **James Carter**, B.A. administration, and his wife, Joan, and son, James Carter III. James is administrative division chief at the Ballistic Missile Office at Norton Air Force Base in San Bernardino. He credits his education, both at San Bernardino Valley College and CSUSB, for enabling him to raise himself from a technical to a professional job at Norton.

**Ana Lopez-Rosende**, B.A. Spanish, B.A. liberal studies, French '83, teaches first grade in the Hesperia Unified School District. Last year she was chosen Teacher of the Year for Hollyvale Elementary. She will serve as a mentor teacher for the next two years.

**Kent E. Moore**, B.A., liberal studies, M.A. education '91, is now a counselor at Alder Junior High in Fontana, after teaching for nine years in the Fontana Unified School District.

**Cristi Quiros**, B.A. psychology, M.S. '86, a marriage, family and child counselor, was named Psychotherapist of the Year by the Inland Southern California Psychotherapy Association.

**Chris N. Woodin**, B.A. criminal justice, M.P.A. '92, is a police lieutenant for the Redlands Police Department. He graduated from the F.B.I. National Academy in Quantico, VA, in 1992.

1982

**Antoinette Holmeyer**, B.A. liberal studies, credential '83, is currently teaching at the Havasupai Elementary School on the Havasupai Indian Reservation in Northern Arizona. She has eight grandchildren.

1983

**Larry Buck**, M.B.A., was recently appointed to the Board of Directors of the Genesis Counseling Service, a non-profit, community-based organization. He was included in the 23rd edition of *Who's Who in the West*.



Carol R. Dey

**Carol R. Dey**, M.B.A., can be found in *Who's Who of American Women* (17th edition), *Who's Who in the West* (23rd edition), and *Who's Who in Finance and Industry* (27th edition).

**Elise Traynum**, B.A. political science, has been instrumental in forming the African-American Attorneys Association of the Inland Empire. The group began meeting late in 1991 after the Board of Supervisors discussed reapportioning their districts. Those proposed boundaries grouped together large Hispanic voting blocks but split black communities, denying African-Americans their rights against discriminatory redistricting practices.

1984

*The San Bernardino Sun* had a feature article about the Credit Counseling Service of the Inland Empire. **Dianne Huppman**, M.B.A., president and chief executive officer of the



non-profit organization says that "a growing demand by debt-laden Southland residents has spurred (the company) to open an office in San Bernardino, with plans for two more in the county." The CCS, as it's known, offers assistance to clients needing to get their credit problems under control and shows them how to live within their means.



Donna Morin

**Donna Morin**, B.A. art, was recently part of a three-person show at the International House Gallery in New York. In the spring of '92 she was one of three featured artists in the "Studio Tour Cooperative Exhibit" at the Museum of History and Art in Ontario. Later this year her work will be included in "New American Talent," an exhibit in Austin, TX. Morin has an M.F.A. from Claremont Graduate School.

**Athene G. Sparks**, B.A. administration, M.B.A. '86, is a certified management accountant and an associate controller for Fleetwood Enterprises, Inc., in Riverside.

**1985**

**Clay Spence**, B.A. administration, is the municipal product manager for Ketema, Inc., McCrometer Division, located in Hemet, CA. In addition to being an active member of the American Water Works Association, Spence belongs to the Water Environment Federation, the Southern California Water Meter Association, and the Instrumentation Society of America.

**Casey Chandler Wilkerson**, B.A. child development, is a substitute teacher for the Redback Unified School District, and lives in Perris, CA, with her husband **Paul** (B.A. theatre arts '83) and two children.

**1986**

**Ana M. Spitzmesser**, M.A. Spanish, received a Ph.D. in Spanish from U.C., Riverside, and has been appointed assistant professor of Spanish at Niagara University in New York state.



Rebecca Mares Durney

**1987**

**Rebecca Mares Durney**, B.A. sociology and criminal justice, received her J.D. degree in 1991 from USC. After passing the California Bar Exam on her first try, she celebrated by spending a month in Europe and visiting 11 countries. She is currently employed as an attorney with the law firm of Best, Best & Krieger in Riverside. She and her husband, John, a San Bernardino dentist, live in Blue Jay. She writes, "I owe a lot of thanks to Professors Wagoner and Erler for their support and confidence. Without them, I would not have gone to law school, and I wouldn't be where I am today. Please give them my special thanks."

**Paul Mata**, B.S. administration, is currently obtaining his Certified Financial Planner professional designation and is being groomed for a district management position. Paul is a personal financial planner for IDS American Express in Moreno Valley.

**Sondra K. Morison**, B.A. geography, M.P.A. '91, works for the city of Chino as a senior management analyst in the Public Works Dept. and lives in Redlands.



Peggy J. Pendleton

**Peggy J. Pendleton**, B.V.E., M.A. education '88, is the dean of career education and economic development at Mt. San Jacinto College.

**1988**

**Miguel Alaniz**, M.P.A., is the recently appointed library director in Inglewood. In March he was featured in an article in the *Central News Wave* that outlined his rise from being the son of Mexican-American farm laborers to being a trumpet player in the Army, earning a bachelor's degree at CSU Hayward, a library science degree in '75 and finally his M.P.A. from CSUSB in '88. Miguel lives in Inglewood with his wife, Mercedes.

**Deborah Ann (Almer) Montana Seiberling**, M.S. psychology, is a marriage, family and child therapist in private practice in Moreno Valley, CA. She also works with adolescent patients and their families at March AFB Hospital.

**1989**

**James "Jeb" Brown**, B.A. political science, graduated from McGeorge School of Law in May and will be working for Nielsen and Glover in Hemet after taking the bar exam.

**Lucille J. Connor**, B.A. sociology, is teaching at the Community College of Vermont in Bennington. Also, she is



playing second violin with the Sage City Symphony and is involved with the American Association of University Women.

**Beverly Quinn**, B.A. theatre arts, is teaching drama and English at Kahuku High and Intermediate School in Kahuku, Hawaii.

**Elizabeth M. (Lisa) Quinn**, B.A. administration, and her husband own an automotive repair shop. She writes, "I never would have been able to run our business so successfully if it hadn't been for CSUSB." The Quinns live in Hemet.



Annette Annechild

## 1990

**Annette Annechild**, M.S. psychology, recently featured in the CSUSB Alumni Authors display in the Pfau Library with a collection of her books on food and fitness, announced the publication of her most recent book, *Your Man and His Mother*, published by the Longmeadow Press of Stamford, CT. This self-help psychology book explores a man's first relationship with his mother and the subsequent effect that relationship has upon his future. Annette appeared on both the Oprah Winfrey Show and the Joan Rivers Show to promote this latest publication.

**Jim Cloud**, B.A. administration, is the vice president of Systems Research and Development for TelComm Associates, Inc., a Grand Rapids, MI based firm that specializes in computer-based records and engineering systems for the telecommunications industry.

**Todd Frantz**, B.S. health science, is an environmental health consultant for Western Exterminators.

## 1991

**Second Lieutenant I. Glenn Axelrod**, B.A. criminal justice, received his commission through the Army ROTC program at Cal State. During his senior year, he received awards for outstanding leadership and recruiting through the Military Science Department. Currently assigned to the 139th Ordnance Battalion, Irvine, CA, he is the officer in charge of communication and electronic operations that provides information systems for the command and control of combat and non-combat operations.

**Carol Doucette**, B.A. English, is currently teaching sixth grade in the Rialto Unified School District.

**Kevin R. Horney**, B.A. sociology, left for training at the International Teams' Missionary Training School to get his Certificate of Teaching English as a Foreign Language (TEFL). He will then move on to Moscow, Russia, for two years as an English teacher and missionary.

**Margaret L. Lorkowski**, B.A. liberal studies, has been married for over 34 years, and has three children and two grandsons. She "returned to school for fun and turned it toward a goal." She is now working on an elementary school teaching credential.

**Danny Manthis**, B.S. industrial technology, is the product and manufacturing engineer for Teledyne Battery Products in Redlands.

"Thank you to Drs. Mulvihill, Rowland, McDowell, Meek, and Hackel for making this possible," writes **John M. Serio**, B.A. geography, announcing his appointment as an assistant planner for the city of Victorville.

**Linda A. Watland**, B.A. special major in paralegal studies, has been employed as a litigation paralegal at the law firm of Fidler & Bell in Riverside.

**Susan Wycoff**, B.S. administration, is an assistant to the President of CBS Entertainment in Hollywood. She works on developing scripts for television and game show ideas in her spare time.

## MARRIAGES

**Carolyn Mae Cofrancesco**, B.A. history '88, married Richard G. Bryan, Jr., May 23, 1992, in Redlands.

**Sharon L. Coppins**, B.A. public administration '91, married **Frank R. Wild**, B.A. political science '91, on Oct. 12, 1991, in Victorville.

**Julie Hubanks**, B.A. liberal studies '90, married Doug Hoffman at Alta Loma Brethren in Christ Church on April 11, 1992.

**Josephine Juran**, M.A. special major '82, married Harold R. Leiby in Redlands on March 7, 1992.

On May 9, in Milwaukee, WI, **Marina Kyritsis**, B.A. liberal studies '80, M.A. education '84, married Nick Athens.

**Laurie Lauetta**, B.A. communication '89, certificate in marketing, married Carrick Reed Boshart on Nov. 9, 1991, in Riverside.

**Karen Maple**, B.A. communication '89, married Dian Humphrey on Oct. 16, 1991, in Ontario, CA.

**Rebecca Patricia Mares**, B.A. sociology/criminal justice '87, and John D. Durney were married on Jan. 5, 1991, at the First Congregational Church in Riverside, CA.

**Deborah Ann Montana**, M.S. psychology '88, married Mark Seiberling on April 18, 1992.

**Nancy Mullins**, B.A. administration '91, and Kenny L. Dennis were married on July 6, 1991, in Las Vegas.

**Shari Lynne Tatman**, B.A. English '91, and Scott Alan Megna, were married on March 21, 1992, at St. Luke Lutheran Church, Claremont.

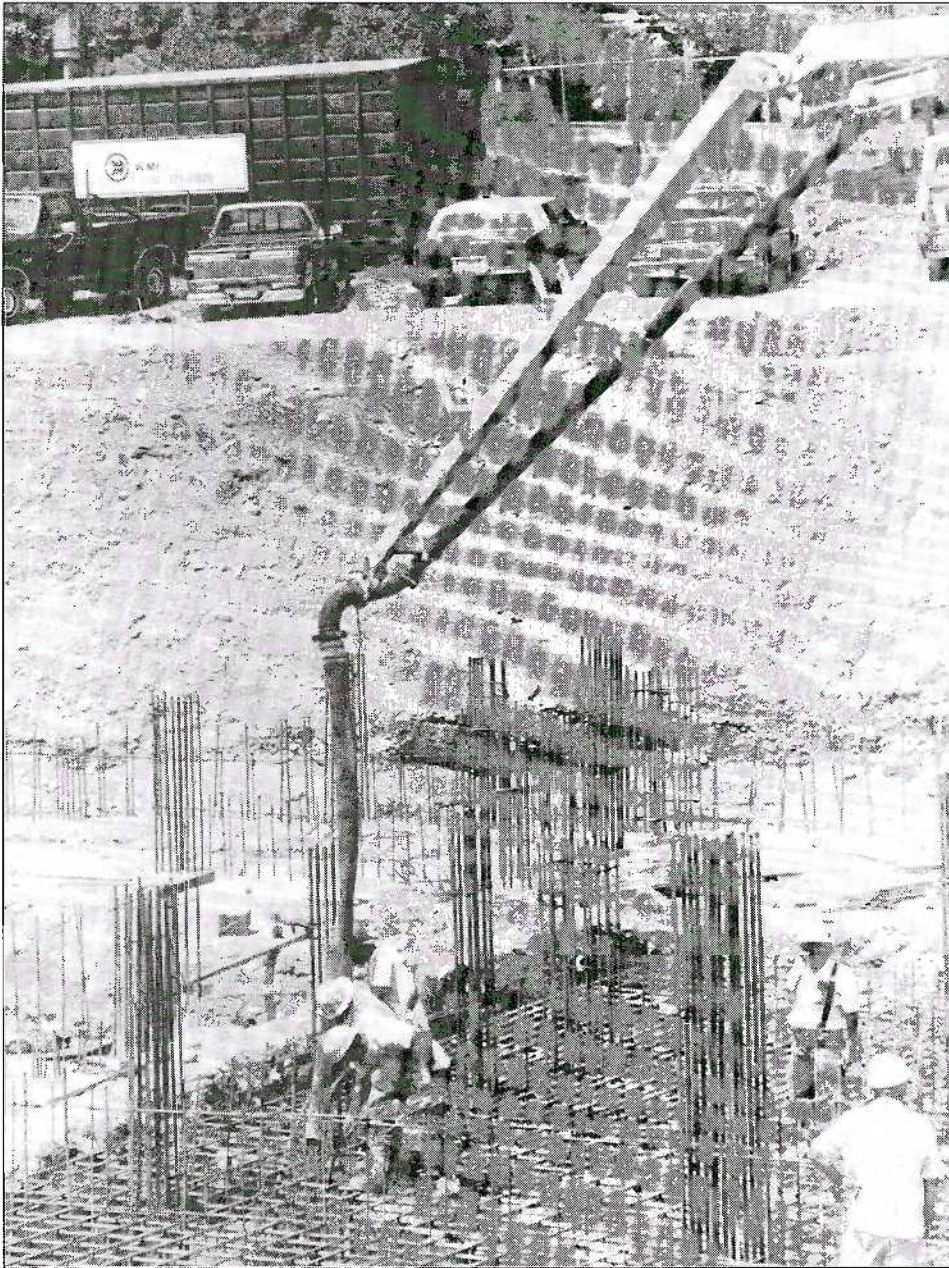
## BIRTHS

**Patricia A. Bartell**, B.A. psychology '84, M.A. '86, and her husband, **Ryan M. Cherland**, M.A. psychology '87, became the parents of their first child, Kelsey Kathryn, on Feb. 29, 1992.

**Todd Frantz**, B.S. health science '90, and his wife, **Nicole**, B.A. liberal studies '90, are the proud parents of Elliott Josiah Frantz, who was born on June 3, 1991.

Hayley Noelle, was born on Nov. 28, 1991, to **Silvana M. LaMay**, B.A. psychology '91, and her husband, Chuck.





Expansion of the university library progresses. The addition will be completed by May 1994 and followed by renovation of the existing building.

PHOTO BY SAM ROMERO

**You save the university 35 cents every time you tell us of your new address. Thank you!**

**California State University,  
San Bernardino  
5500 University Parkway  
San Bernardino, CA 92407-2397**

*Address correction requested*

**Cal State**  
**SAN BERNARDINO**

## INSIDE THIS ISSUE:

### **Page 3**

STATER BROS. CEO  
JACK BROWN DONATES  
\$1 MILLION TO  
UNIVERSITY

### **Page 5**

CAL STATE AND HILLSIDE  
SCHOOL ONLY AMERICAN  
SITES IN BRITISH  
DOCUMENTARY

### **Page 24**

ATHLETIC ARENA TO  
BEAR NAME OF ALUMNUS  
NICHOLAS COUSSOULIS'  
PARENTS

Non-Profit  
Organization  
U.S. Postage  
**PAID**  
San Bernardino, CA  
Permit No. 1649